

InTCHSolutions

Information & Technology Engineering

**TEACH Public Schools
Category Two**

BEN: 17022941

2026-2027 Funding Year (FY26)

Form 470#260007104

DUE DATE: January 12, 2026

Prepared by:

Brandon Nguyen

Project Manager

P: 562.607.8829

bnguyen@intchsolutions.com

InTCHSolutions Corp.

19200 Von Karman Ave,

Suite 400

Irvine, CA 92612



COVER LETTER/LETTER OF INTEREST

Date: January 5, 2026

<p>From: Brandon Nguyen InTCHSolutions (InTeCHSolution) P: 949.841.6414 C: 562.607.8829 BNguyen@InTCHSolutions.com</p>	<p>To: Attn: Enrique Robles TEACH Public Schools 1846 W. Imperial Hwy Los Angeles, CA 90047 Los Angeles 323-872-0808 erate-tpes@teachps.org</p>
--	---

Hi Enrique,

Thank you for giving InTCHSolutions (InTeCHSolutions) the opportunity to submit a proposal for RFP Category Two - 2026-2027 Funding Year (FY26).

InTCHSolutions has a rich history of delivering exceptional results in the field of information technology. One of the key strengths of our firm lies in our personnel. Our team comprises a staff with diverse backgrounds and expertise, having over 30 years of industry experience in the field of I.T. network design, architecture, implementation, and C-7/C-10 cable/fiber ranging from small to large scale projects from education to commercial industry following enterprise standards.

The proposed team has years of experience with a variety of enterprise level network infrastructure working with systems such as but not limited to CISCO, JUNIPER NETWORKS and HPE Aruba.

For this project, our firm is partnering with Cisco Meraki to provide a turnkey solution for the installation and configuration of network switches, access points with verification, validation and all proper documentation requested. In addition, providing cost for basic maintenance for all the devices.

Thank you again for your time and reviewing this proposal. Please feel free to reach out for any further questions or concerns.

Sincerely,

Brandon Nguyen
Project Manager

TABLE OF CONTENTS

1 – INTCHSOLUTIONS (InTeCHSolutions) CORPORATION	5
1A – WHO WE ARE	6
2 – E-RATE AND RFP COMPLIANCE	8
3– OVERVIEW	12
4 – THE PROPOSAL	13
5 – FIRM QUALIFICATIONS	15
5A – PROJECT TEAM	16
6 – QUOTE – PRICING SHEET	20
7 – REFERENCES	30
8 – CONCLUSION	36
TERMS AND AGREEMENT	37
LIST OF FIGURES	
Figure 1: FCC Green Light Status.....	8
Figure 2: USAC SPIN NUMBER.....	8
Figure 3: C-7 & C-10 License – 1101216.....	9
Figure 4: DIR Compliant Certificate.....	10
Figure 5: Certificate of Liability Insurance.....	11
LIST OF TABLES	
TABLE I: Price Proposal – C9300 Switches with 1 Year License.....	21
TABLE II: Price Proposal – C9300 Switches with 3 Year License.....	22
TABLE III: Price Proposal – C9300 Switches with 5 Year License.....	23
TABLE IV: Price Proposal – C9350 Switches with 3 Year License.....	24
TABLE V: Price Proposal – C9350 Switches with 5 Year License.....	25
TABLE VI: Price Proposal – WAP with 1 Year License.....	26
TABLE VII: Price Proposal – WAP with 3 Year License.....	27
TABLE VIII: Price Proposal – WAP with 5 Year License.....	28
TABLE IX: Price Proposal – 360 Hours of Maintenance.....	29
TABLE VI: List of References.....	30

19200 Von Karman Ave, Suite 400
Irvine, CA 92612
P: 949.841.6414

InTCHSolutions
Information & Technology Engineering

Page | 4

INTCHSOLUTIONS CORPORATION

CATEGORY TWO

BEN:17022941

RFP: 2026-2027 FUNDING YEAR (FY26)

FORM 470#260007104

1 - INTCHSOLUTIONS (InTeCHSolutions) CORPORATION

is an employee-owned business, founded in 2016 with the belief of providing high quality consulting I.T and engineering services to clients ranging from corporate enterprises, education, and government entities.

We are a bonded CA state licensed C-7/C-10 contractor (License CA 1101216) and a certified USAC service provider (SPIN Number: 143053966). Our staff have over 30 years of experience and provide expertise services ranging from I.T. Network Infrastructure and Architecture design to implementation, Firewall and Security, Data Center, Cloud migration/management/integration and C-7/C-10 Cabling/Fiber Installations. We provide turnkey A-Z white glove services following industry standards.

Our specialization is architecting solutions to any technical related problem, fast agile deployment and installation, and engineering grade documentation for our service deliverables. We utilize engineering, artificial intelligence (A.I.) tools, and systematic sigma six and agile processes to complete our end goals and projects.

Our staff and company belief, in addition, to top tier customer service is to give back to the community and support out-reach programs, non-profit organizations, and educational organizations.

Please see following pages for an overview of the company and services we offer.

InTCHSolutions

Information & Technology Engineering

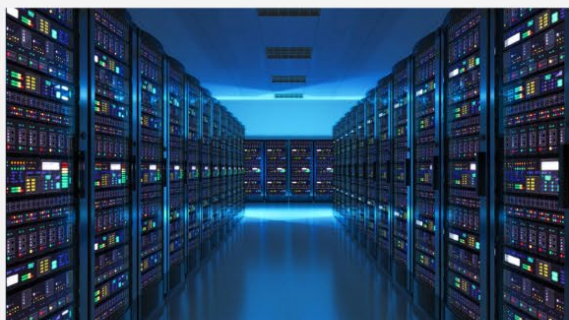
www.InTCHSolutions.com



ABOUT US

Formed in 2022, InTCHSolutions emerged as a pioneering employee-owned enterprise in network engineering. Our founding members come from esteemed backgrounds, with prior experience in prominent positions at companies such as F5 Network Inc, Tesla, Amazon, UPS, Northrop Grumman, and others within the S&P 500 cohort. Together, our team boasts over 30 years of collective experience, covering a wide range of domains such as network engineering design, architecture, and implementation. We take pride in our repertoire of published and approved technology patents, coupled with our expertise in C-7 and C-10 cabling/fiber deployment across projects of varying scales, ranging from educational institutions to commercial enterprises.

At InTCHSolutions, we specialize in a variety of services including Network Infrastructure Design, Security Solutions, and much more. Our commitment to excellence, coupled with our dynamic team, enables us to deliver unparalleled solutions tailored to meet the unique needs of our clients across industries.

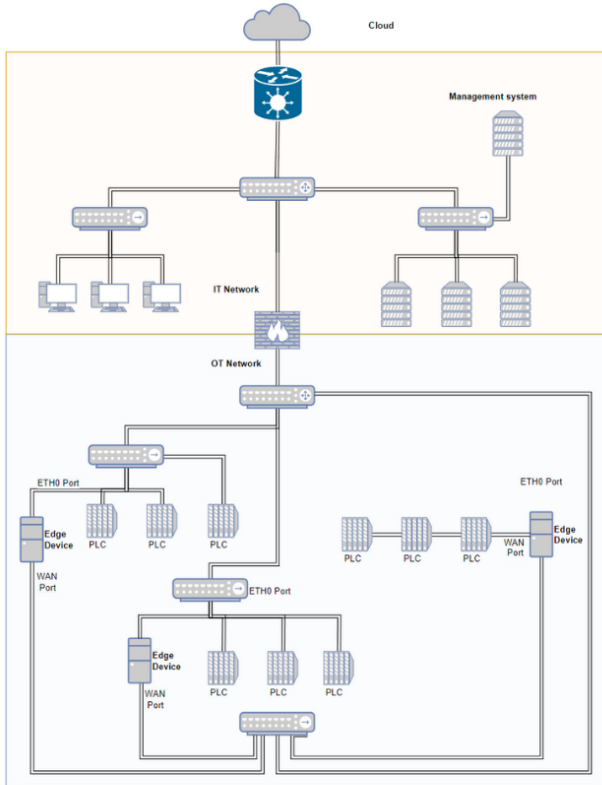


THE TEAM

Our team comprises dedicated electrical and network engineers committed to delivering innovative solutions to our clients. With a deep understanding of cutting-edge technologies and a passion for problem-solving, we collaborate closely to design and implement systems that meet our clients' specific needs. From designing efficient electrical systems to optimizing network infrastructure, we leverage our expertise and experience to ensure seamless integration and reliable performance. Our goal is to exceed expectations and provide tailored solutions that empower our clients to succeed in their endeavors.

CONTACT US - 949.998.4143

Engineering@InTCHSolutions.com



BUILDING YOUR NETWORK WITH US

Starting with careful planning specific to your company's requirements, we develop methods that maximize efficiency and expandability. Further, our knowledgeable staff develops creative solutions ranging from Network Configuration to Cabling Methodology, making sure the solution are always compatible and dependable with new or existing network infrastructure.

We prioritize smooth interoperability with your current infrastructure to ensure minimal disturbance during the deployment of these solutions through precise integration. Ultimately, thorough validation guarantees that your network satisfies the highest requirements for dependability and quality in every way. With the help of this tried-and-true process, your company can confidently handle the challenges of network development, propelling your enterprise forward with speed and efficiency.

SERVICES WE PROVIDE

NETWORK INFRASTRUCTURE DESIGN

- Complimentary Network Consultation and Tailored Design Services
- Access Control
- Network Auditing
- Routing and Switching Architecting
- Cutting-edge Network Security Solutions
- Voice IP/Call Manager
- Firewall
- WLAN Design

NETWORK IMPLEMENTATION AND INTEGRATION

- Project Management
- Turnkey - Network Switch and Access Point Installation
- Network Verification and Testing
- Network Management
- Configuration Services
- Full System Testing, Verification, and Documentation Generation

FIBER | CAT6A CABLING

- C7/C10 Fiber SM/MM and CAT6/6A Cabling
- Connectivity speed testing
- Cable Certification Reporting
- Network Cabinet, Patch panel, Keystone, labeling, mapping Installation
- Documentation - Map, Speed, Distance

CONTACT US - 949.998.4143
Engineering@InTCHSolutions.com

2 - E-RATE AND RFP COMPLIANCE

The screenshot shows the FCC Registration System (CORES) interface. At the top, it says "Commission Registration System (CORES)" and "FCC Registration". The user is logged in as "bnuyen@intchsolutions.com". The main content area is titled "FRN Financial" and displays a table with one entry:

FRN	FRN Name	Red Light Status	Action
0033335126	InTCHSolutions Corporation	Green Light	View/Make Payments

Below the table, it says "Showing 1 to 1 of 1 entries" and "Go Back". At the bottom, there is a "Customer Service" section with links for Help, Frequently Asked Questions, FCC Privacy Policy, Privacy Act Statement, and FCC Home Page. A note says: "For assistance, please submit a help request at <https://www.fcc.gov/wireless/available-support-services> or call 877-480-3201 (Mon.-Fri. 8 a.m.-6 p.m. ET)." The current version is 3.1.0.

Figure 1: FCC Green Light Status

The screenshot shows the USAC SPIN NUMBER page for InTCHSolutions. The page title is "#143053966 - InTCHSolutions". There are buttons for "CREATE A NEW USER", "ADD OR REMOVE EXISTING USERS", and "MANAGE SERVICE PROVIDER USE...". Below the title, there are tabs for "Summary", "Customer Service Cases", "Consulting Firms", "FCC Forms", "FRN Appeals", "News", and "Related Actions". The "Organization Details" section shows the following information:

Name	InTCHSolutions	Organization Type	Service Provider Organization
Doing Business As	InTCHSolutions	DUNS Number	094268496
SPIN	143053966	Status	Active
		FCC Form 473/SPAC Filed	N/A

Figure 2: USAC SPIN NUMBER

Contractor's License Detail for License # 1101216

DISCLAIMER: A license status check provides information taken from the CSLB license database. Before relying on this information, you should be aware of the following limitations.

- ▶ CSLB complaint disclosure is restricted by law ([B&P 7124.6](#)) If this entity is subject to public complaint disclosure click on link that will appear below for more information. Click [here](#) for a definition of disclosable actions.
- ▶ Only construction related civil judgments reported to CSLB are disclosed ([B&P 7071.17](#)).
- ▶ Arbitrations are not listed unless the contractor fails to comply with the terms.
- ▶ Due to workload, there may be relevant information that has not yet been entered into the board's license database.

Business Information

INTCHSOLUTIONS CORPORATION
dba INTCHSOLUTIONS VOLTAGE SYSTEMS

4199 CAMPUS DRIVE SUITE 550
IRVINE, CA 92612
Business Phone Number:(562) 607-8829

Entity Corporation
Issue Date 02/07/2023
Expire Date **02/28/2027**

License Status

This license is current and active.

All information below should be reviewed.

Classifications

- ▶ [C-7 - LOW VOLTAGE SYSTEMS](#)
- ▶ [C10 - ELECTRICAL](#)

Figure 3: C-7 & C-10 License – 1101216

DIR State of California
EST. 1927 Department of Industrial Relations

Knowledge Public Works Services My Cases Your information

Associated Accounts

Account	Status	
InTCHSolutions	DIR Approved	Registration valid from 2025-08-01 to 2027-06-30
InTCHSolutions		
1101216		

Welcome, Brandon Nguyen

InTCHSolutions 1001010949 [Unlink From Business](#)

DIR Approved [Manage Contractor Employees](#) [Manage Contractor Users](#) [Manage Contractor Information](#)

Current registration valid from August 1, 2025 to June 30, 2027

Figure 4: DIR Compliant Certificate

		CERTIFICATE OF LIABILITY INSURANCE		DATE (MM/DD/YYYY) 10/13/2025			
THIS CERTIFICATE IS ISSUED AS A MATTER OF INFORMATION ONLY AND CONFERS NO RIGHTS UPON THE CERTIFICATE HOLDER. THIS CERTIFICATE DOES NOT AFFIRMATIVELY OR NEGATIVELY AMEND, EXTEND OR ALTER THE COVERAGE AFFORDED BY THE POLICIES BELOW. THIS CERTIFICATE OF INSURANCE DOES NOT CONSTITUTE A CONTRACT BETWEEN THE ISSUING INSURER(S), AUTHORIZED REPRESENTATIVE OR PRODUCER, AND THE CERTIFICATE HOLDER.							
IMPORTANT: If the certificate holder is an ADDITIONAL INSURED, the policy(ies) must have ADDITIONAL INSURED provisions or be endorsed. If SUBROGATION IS WAIVED, subject to the terms and conditions of the policy, certain policies may require an endorsement. A statement on this certificate does not confer rights to the certificate holder in lieu of such endorsement(s).							
PRODUCER TWFG GENERAL AGENCY, LLC SUNGOLD INSURANCE SERVICES 1201 LAKE WOODLANDS DR, STE 4020 WOODLANDS, TX 77380			CONTACT NAME: PHONE (A/C, No, Ext): (619) 576-6900 FAX (A/C, No): E-MAIL: certs@sungoldca.com ADDRESS:				
INSURED INTCHSOLUTIONS CORPORATION 4199 CAMPUS DR, STE 550 IRVINE, CA 92612			INSURER(S) AFFORDING COVERAGE		NAIC #		
			INSURER A : TRAVELERS COMMERCIAL CASUALTY COMPANY		40282		
			INSURER B : SECURITY NATIONAL INSURANCE COMPANY		40533		
			INSURER C : HARTFORD CASUALTY INS CO		29434		
			INSURER D :				
			INSURER E :				
			INSURER F :				
COVERAGES		CERTIFICATE NUMBER:		REVISION NUMBER:			
THIS IS TO CERTIFY THAT THE POLICIES OF INSURANCE LISTED BELOW HAVE BEEN ISSUED TO THE INSURED NAMED ABOVE FOR THE POLICY PERIOD INDICATED. NOTWITHSTANDING ANY REQUIREMENT, TERM OR CONDITION OF ANY CONTRACT OR OTHER DOCUMENT WITH RESPECT TO WHICH THIS CERTIFICATE MAY BE ISSUED OR MAY PERTAIN, THE INSURANCE AFFORDED BY THE POLICIES DESCRIBED HEREIN IS SUBJECT TO ALL THE TERMS, EXCLUSIONS AND CONDITIONS OF SUCH POLICIES. LIMITS SHOWN MAY HAVE BEEN REDUCED BY PAID CLAIMS.							
INSUR LTR	TYPE OF INSURANCE	ADDL INSD	WVD	POLICY NUMBER	POLICY EFF (MM/DD/YYYY)	POLICY EXP (MM/DD/YYYY)	LIMITS
A	<input checked="" type="checkbox"/> COMMERCIAL GENERAL LIABILITY <input type="checkbox"/> CLAIMS-MADE <input checked="" type="checkbox"/> OCCUR	<input checked="" type="checkbox"/>	<input checked="" type="checkbox"/>	680-3T710317	03/29/2025	03/29/2026	EACH OCCURRENCE \$ 1,000,000 DAMAGE TO RENTED PREMISES (Ea occurrence) \$ 500,000 MED EXP (Any one person) \$ 5,000 PERSONAL & ADV INJURY \$ 1,000,000 GENERAL AGGREGATE \$ 2,000,000 PRODUCTS - COM/OP AGG \$ 2,000,000
GENL AGGREGATE LIMIT APPLIES PER: <input checked="" type="checkbox"/> POLICY <input type="checkbox"/> PROJECT <input type="checkbox"/> LOC OTHER:							
A	AUTOMOBILE LIABILITY <input type="checkbox"/> ANY AUTO OWNED AUTOS ONLY <input checked="" type="checkbox"/> HIRED AUTOS ONLY <input type="checkbox"/> SCHEDULED AUTOS <input checked="" type="checkbox"/> NON-OWNED AUTOS ONLY	<input checked="" type="checkbox"/>	<input checked="" type="checkbox"/>	680-3T710317	03/29/2025	03/29/2026	COMBINED SINGLE LIMIT (Ea accident) \$ 1,000,000 BODILY INJURY (Per person) \$ BODILY INJURY (Per accident) \$ PROPERTY DAMAGE (Per accident) \$
	UMBRELLA LIAB EXCESS LIAB DED RETENTION \$						EACH OCCURRENCE \$ AGGREGATE \$
B	WORKERS COMPENSATION AND EMPLOYERS' LIABILITY ANY PROPRIETOR/PARTNER/EXECUTIVE OFFICER/MEMBER EXCLUDED? (Mandatory in NH) If yes, describe under DESCRIPTION OF OPERATIONS below		N/A	SWC1535188	02/16/2025	02/16/2026	<input checked="" type="checkbox"/> PER STATUTE <input type="checkbox"/> OTHER E.L. EACH ACCIDENT \$ 1,000,000 E.L. DISEASE - EA EMPLOYEE \$ 1,000,000 E.L. DISEASE - POLICY LIMIT \$ 1,000,000
C	ERROR & OMISSIONS			TE 06523912401	05/20/2025	05/20/2026	EACH OCCURRENCE \$ 1,000,000 GENERAL AGGREGATE \$ 2,000,000
DESCRIPTION OF OPERATIONS / LOCATIONS / VEHICLES (ACORD 101, Additional Remarks Schedule, may be attached if more space is required) LOCATION: 4199 CAMPUS DR, STE 550, IRVINE, CA 92612							
CE REFERENCE				CANCELLATION SHOULD ANY OF THE ABOVE DESCRIBED POLICIES BE CANCELLED BEFORE THE EXPIRATION DATE THEREOF, NOTICE WILL BE DELIVERED IN ACCORDANCE WITH THE POLICY PROVISIONS. AUTHORIZED REPRESENTATIVE <i>Dominick Quash</i>			

ACORD 25 (2016/03)

The ACORD name and logo are registered marks of ACORD

© 1988-2015 ACORD CORPORATION. All rights reserved.

Figure 5: Certificate of Liability Insurance

3- OVERVIEW

TEACH Public Schools are seeking a turnkey installation service for network switches and access points. The proposal shall comply with the stated requirements as identified in the RFP. InTCHSolutions understand these requirements and shall work with the district to comply with the requirements. The following locations will serve as the place of work denoted in the RFP:

Entity #	School Name	School Address
16071381	TEACH Academy of Technologies	10045 S. Western Ave, Los Angeles, CA 90047 Annex 10000 S. Western Ave, Los Angeles, CA 90047
17023162	TEACH Public Schools Central Office	10600 S. Western Ave. Los Angeles, CA 90047
16082080	TEACH Tech Charter High School	10616 S. Western Ave, Los Angeles, CA 90047
17019804	TEACH Preparatory Mildred S. Cunningham & Edith H. Morris Elementary	8505 S. Western Ave, Los Angeles, CA 90047

4 – THE PROPOSAL

This section shall cover the scope of work and design approach of this project.

The following services will be provided:

Network Switches

InTCHSolutions will provide the following:

1. All labor, materials, tools, equipment, transportation, documentation, and incidentals required to complete the following:
 - a. Supply, configure and install (replace) approximately 7 network switches into existing network racks/cabinets utilizing configuration parameters given by IT staff.
 - b. Provide complete system documentation, including configuration files, location maps, and maintenance manuals.
 - c. Conduct acceptance testing, validation, and optimization of coverage across all sites.
2. All proposed equipment will be new and factory sealed.
3. E-Rate documentation will be submitted after the end of every E-Rate Year to the designated representative.
 - a. "E-Rate Documentation" Report and "installed equipment and cabling" will be formatted using the RFP's requirements.

Access Points

InTCHSolutions will provide the following:

1. All labor, materials, tools, equipment, transportation, documentation, and incidentals required to complete the following:
 - a. Supply, configure and install (replace) approximately 20 wireless access points utilizing existing Cat 6A cabling and the configuration parameters given by IT staff.
 - b. Configure all wireless units under a centrally managed cloud platform providing a "singlepane-of-glass" operational view, including redundancy and failover capabilities.
 - c. Provide complete system documentation, including configuration files, location maps, and maintenance manuals.
 - d. Conduct acceptance testing, validation, and optimization of coverage across all sites.
2. All proposed equipment will be new and factory sealed.
3. E-Rate documentation will be submitted after the end of every E-Rate Year to the designated representative.
 - a. "E-Rate Documentation" Report and "installed equipment and cabling" will be formatted using the RFP's requirements.

Basic Maintenance

InTCHSolutions will provide the following deliverables as stated in the RFP:

1. Basic Maintenance
 - a. The applicant seeks 360 Hours of basic maintenance services eligible under this Request for Proposal include the repair and upkeep of eligible hardware to ensure continued functionality, along with the maintenance of internal wiring and cabling necessary for reliable network performance. The scope of services also encompasses configuration changes required to sustain optimal system operations, as well as the provision of basic technical support.
2. Managed Internal Broadband service (MIBS)
 - a. This will follow E-Rate standard practice and the criteria mentioned in the RFP.

3. The following are the proposed devices that require Basic Maintenance as stated in the RFP:

Router						
Make	Model	Internal Connection	Quantity	Configuration & Installation (Y/N)	Basic Maintenance (Y/N)	Managed Internal Broadband Service (Y/N)
Meraki	MX105	Security Appliance	4	N	Y	Y
WAP						
Make	Model	Internal Connection	Quantity	Configuration & Installation (Y/N)	Basic Maintenance (Y/N)	Managed Internal Broadband Service (Y/N)
Meraki	MR57	WAP	96	N	Y	Y
Meraki	MR86	WAP	4	N	Y	Y
Switch						
Make	Model	Internal Connection	Quantity	Configuration & Installation (Y/N)	Basic Maintenance (Y/N)	Managed Internal Broadband Service (Y/N)
Meraki	MS350-48	48 Port Switch Poe	4	N	Y	Y

5 – FIRM QUALIFICATIONS

InTCHSolutions was founded to provide corporate and educational clients with information technology and engineering consulting services. Our services and capabilities range from and not limited to:

- Network Infrastructure Architecting and Management
 - Firewall
 - Access Points
 - Switches
 - Data Centers
- C-7 Low Volage Cabling and Fiber – C-10 High Voltage
- A.I. and Cloud Solutions and Services
- Engineering and Technology Auditing and Assessments
- Software product development
- Database security, management, and migration
- USAC E-RATE Service Provider

all while providing high standard white glove services. Our specialization is finding a solution to any technical related problem and utilizing an engineering and systematic sigma six and agile process to complete our end goals and projects.

Our staff are certified and have a combined total of more than 50 years of industry experience in I.T and Engineering. We are a certified C-7/C-10 Low Voltage Construction Contractor and have the capabilities to install ethernet, fiber optics, security cameras, low voltage wiring, access control.

5A – PROJECT TEAM

OUR KEY STAFF:

RESUMES – CAN BE PROVIDED UPON REQUEST.

Brandon Nguyen – CEO/Lead Consultant – 562.607.8829 – Bnguyen@intchsolutions.com

- Accomplished professional with extensive experience in network and wireless design and project management, currently serving as the CEO and Lead Consultant of InTCHSolutions Corporation.
- B.S. in Electrical Engineering from the University of California, Irvine, and a Master's in Electrical Engineering from Cal State University of Long Beach.
- Technical expertise spans across VHDL, C, C++, Python, Matlab, and CISCO technologies.
- Architected network infrastructures and access points for school districts and commercial entities, developed logistic tracking software, and automated Chromebook enrollment processes to optimize time and costs.
- Leadership and project management skills are evidenced by his successful guidance of a 12-member team in executing multiple network infrastructure projects, including MDF/IDF installations and upgrades.
- Prior role as a Communication Network Systems Engineer III at Northrop Grumman further solidified his analytical and programming prowess, where he performed wideband downlink simulation analysis, chipset programming, and satellite communication link research.
- Comprehensive skill set and leadership in IT network design and project management make him a pivotal asset in delivering innovative and efficient network solutions.

Mark E. Quevedo – Network Architect – Mark@intchsolutions.com

- Highly experienced network architect and security consultant with a distinguished career spanning over three decades.
- Currently serving as a Consulting Network/Security Architect at InTCHSolutions, renowned for his expertise in designing, configuring, and optimizing complex network infrastructures, as well as his proficiency in information security and governance.
- His technical acumen is evidenced by multiple patents issued and pending, including innovations in multi-device authentication and managing network traffic with sensitive data.
- Mark's extensive professional experience includes tenure as a Network Architect at InTCHSolutions in Irvine, CA, where he significantly enhanced network performance and uptime using advanced Cisco solutions and cloud-managed networking.
- Previously at F5 Networks Inc. spearheading the development of F5 Cloud Services and creating innovative products such as the SSL Orchestrator. His contributions in security and cryptographic features for various products have been pivotal, earning him the prestigious F5 Five-Star employee award.
- Prior to his time at F5, Mark was the Identity & Access Management Architect at Costco Wholesale Corp., where he led the architecture and engineering of Costco's IAM infrastructure, supporting a vast network of employees and members. His career also includes significant roles at the City of Hope Medical Center, The Seattle Times, and IT Network Infrastructure and Architecture | Firewall Security | Cloud Solutions | C7/C10 Cabling and Fiber

as an independent consultant, where he designed and built LAN/WAN network systems and managed high-performance network projects.

- Mark holds a GIAC Security Leadership Certification (GSLC), is DoDD 8570 IAM-III qualified, and a Cisco CCNA.
- Education in Computer Science from the University of California, San Diego, combined with extensive professional training in Agile methodologies, SANS MGT-512, CoBIT, ITIL, Cisco routing, and more, underscores his comprehensive skill set.
- Innovative contributions to the field of network and security architecture, along with his leadership in mentoring and training teams, make him an invaluable asset in delivering cutting-edge, secure, and efficient network solutions.

Kenny Du – Network Engineer – Kenny.Du@intchsolutions.com

- Network Operations Engineer with experience in troubleshooting, configuring, and deploying network infrastructure.
- Supported 5,300+ firewalls, performed mass deployments, and improved network infrastructure.
- Skilled in firewalls, VoIP systems, and server provisioning.
- Hands-on experience with Avaya VoIP deployments, network equipment installation, and project management across multiple facilities.
- Holds CompTIA A+, Network+, Security+, and Cloud+ certifications.
- Proficient in Fortinet Firewalls, Linux/Windows OS, and remote troubleshooting.
- Currently pursuing a degree in Network Engineering and Security at Western Governors University.
- Recognized for analytical thinking, attention to detail, and the ability to work independently or in a team.

Viet Bui – Network Engineer – Engineering@intchsolutions.com

- A+ Certified IT Administrator with proven expertise in IT infrastructure deployment and PC support across multiple platforms.
- CompTIA-certified professional with critical supervisory and management experience in IT and logistics industries.
- Skilled in creating Scopes of Work for low-voltage and electrical contract projects, with in-depth knowledge of hazardous material regulations and logistics.
- Deployed and configured PCs, network equipment (routers, switches, access points), and IT systems for enterprise facilities.
- Managed servers, including file and print, SQL, and network shares, across Windows, Linux, iOS, and Android platforms.
- Installed and maintained IP cameras, VOIP systems, and Operational Technology infrastructure.
- Previous worked as an IT operation shift supervisor at UPS.

Christian Lam – Project Manager – 562.338.6190 – christian@intchsolutions.com

- Project Manager at InTCHSolutions Corp.
- Strong foundation in business management and information systems from his education at the University of California, Santa Cruz.
- Comprehensive skill set that includes expertise in Java, Python, MS Excel VBA, SAP, MES (Solumina), IBM Maximo, and standard supply chain processes.
- Excels in designing and implementing scalable and secure network architectures.
- Hands-on experience with network devices, ensuring optimal performance and reliability.
- Trained in Agile (Scrum) methodologies and uses tools like Jira for project management.
- Collaborates with senior engineers to deepen his knowledge of Juniper Network solutions, and actively involved in deploying and managing network infrastructures.
- Monitoring network traffic, analyzing logs for security threats, providing technical support, and maintaining detailed network documentation.

Phil Pham – Network Technician – philpham@intchsolutions.com

- Phil has been instrumental in managing cloud databases, training employees on industry- standard configuration management
- Supports Network engineers daily, currently pursuing a degree in information technology at Cal State University, Fullerton
- Performing document reviews, creating change requests, and preparing RFP/RFI packages.
- Prior technical skills at Amazon/JLL Reliability & Maintenance Engineering, where he performed preventative maintenance and troubleshooting on complex robotics and mechanical systems, ensuring operational efficiency and safety.
- Proficient in Microsoft Office, critical problem-solving abilities, and experience leading large group meetings, Brian is adept at diagnosing and resolving technical issues.

Jose Urzua – Network Technician – jose@intchsolutions.com

- Network Technician responsible for verification and validation through FLUKE/Netally Tools
- Proficient in troubleshooting network issues and network management dashboards (MIST, MERAKI, DNAC, ARUBA CENTRAL)
- Current student at Cal State University, Long Beach studying mechanical engineering.
- Trained to install network equipment and basic troubleshooting, cable of installing network switches and access points

Additional Supporting Staff

IT Network Infrastructure and Architecture | Firewall Security | Cloud Solutions | C7/C10 Cabling and Fiber

19200 Von Karman Ave, Suite 400
Irvine, CA 92612
P: 949.841.6414

InTCHSolutions
Information & Technology Engineering

Page | 19

Rafael Tejada - C7/C10 Construction Supervisor - 909.204.0657 - rafa@intchsolutions.com

Justin Nguyen - Technician - justin@intchsolutions.com

6 - QUOTE - PRICING SHEET

Pricing sheet shown below.

Please note the MS-350 is at end of life sale and has a few years left in support. We are proposing two CISCO MERAKI switch models that can be chosen. The models are C9300 and C9350. The C9350 is the newest model and the C9300 is fairly new as well. The C9350 only has license for 3 and 5 year. The C9300 has options for 1/3/5 year.

APs are quotes for 1/3/5 year and maintenance is set to an hourly rate of 50 dollars an hour.

TABLE I: Price Proposal – C9300 Switches with 1 Year License

	InTCHSolutions Corporation							
Responder Name:	Brandon Nguyen							
Responder Title:	Project Manager							
Responder SPIN:	143053966							
Responder Phone:	562.607.8829							
GROUP	TEACH Public Schools - C9300 Switches (1-Year License)							
	Model Number	Manufacturer	Description	Unit Cost	Quantity	Extended Cost	E-Rate Eligible %	
Switches	C9300-48P-M	CISCO SYSTEMS	C9300 48-port PoE+, 715wac PS, w/MERAKI	\$ 4,228.40	7	\$ 29,598.80	100%	
Switches	C9300X-NM-8Y-M	CISCO SYSTEMS	C9300X 8-port 1/10/25G SFP+ Network Module, w/MERAKI	\$ 1,157.40	7	\$ 8,101.80	100%	
Switches	LIC-C9300-48E-1Y	CISCO SYSTEMS	Meraki Enterprise License for C9300-M 48-port, 1 year	\$ 510.25	7	\$ 3,571.75	100%	
GROUP	Installation/Labor Price List							
	Eligible Components	Installer	Description	Cost Per Device	Quantity	Extended Cost	E-Rate Eligible %	
Switches	Switch Installation	InTCHSolutions	Network Switch Installation and Configuration	\$ 300.00	7	\$ 2,100.00	100%	
Total Cost of Equipment						\$ 37,700.60		
Total Cost of License						\$ 3,571.75		
Sales Tax For Equipment@ (9.75%)						\$ 3,675.81		
Total Cost of Installation/Labor						\$ 2,100.00		
Shipping and Handling						\$ 100.00		
GRAND TOTAL						\$ 47,148.16		

TABLE II: Price Proposal – C9300 Switches with 3 Year License

	InTCHSolutions Corporation							
Responder Name:	Brandon Nguyen							
Responder Title:	Project Manager							
Responder SPIN:	143053966							
Responder Phone:	562.607.8829							
GROUP	TEACH Public Schools - C9300 Switches (3-Year License)							
	Model Number	Manufacturer	Description	Unit Cost	Quantity	Extended Cost	E-Rate Eligible %	
Switches	C9300-48P-M	CISCO SYSTEMS	C9300 48-port PoE+, 715wac PS, w/MERAKI	\$ 4,228.40	7	\$ 29,598.80	100%	
Switches	C9300X-NM-8Y-M	CISCO SYSTEMS	C9300X 8-port 1/10/25G SFP+ Network Module, w/MERAKI	\$ 1,157.40	7	\$ 8,101.80	100%	
Switches	LIC-C9300-48E-3Y	CISCO SYSTEMS	Meraki Enterprise License for C9300-M 48-port, 3 year	\$ 962.69	7	\$ 6,738.83	100%	
GROUP	Installation/Labor Price List							
	Eligible Components	Installer	Description	Cost Per Device	Quantity	Extended Cost	E-Rate Eligible %	
Switches	Switch Installation	InTCHSolutions	Network Switch Installation and Configuration	\$ 300.00	7	\$ 2,100.00	100%	
Total Cost of Equipment						\$	37,700.60	
Total Cost of License						\$	6,738.83	
Sales Tax For Equipment@ (9.75%)						\$	3,675.81	
Total Cost of Installation/Labor						\$	2,100.00	
Shipping and Handling						\$	100.00	
GRAND TOTAL						\$	50,315.24	

TABLE III: Price Proposal – C9300 Switches with 5 Year License

	InTCHSolutions Corporation							
Responder Name:	Brandon Nguyen							
Responder Title:	Project Manager							
Responder SPIN:	143053966							
Responder Phone:	562.607.8829							
GROUP	TEACH Public Schools - C9300 Switches (5-Year License)							
	Model Number	Manufacturer	Description	Unit Cost	Quantity	Extended Cost	E-Rate Eligible %	
Switches	C9300-48P-M	CISCO SYSTEMS	C9300 48-port PoE+, 715wac PS, w/MERAKI	\$ 4,228.40	7	\$ 29,598.80	100%	
Switches	C9300X-NM-8Y-M	CISCO SYSTEMS	C9300X 8-port 1/10/25G SFP+ Network Module, w/MERAKI	\$ 1,157.40	7	\$ 8,101.80	100%	
Switches	LIC-C9300-48E-5Y	CISCO SYSTEMS	Meraki Enterprise License for C9300-M 48-port, 5 year	\$ 1,607.22	7	\$ 11,250.54	100%	
GROUP	Installation/Labor Price List							
	Eligible Components	Installer	Description	Cost Per Device	Quantity	Extended Cost	E-Rate Eligible %	
Switches	Switch Installation	InTCHSolutions	Network Switch Installation and Configuration	\$ 300.00	7	\$ 2,100.00	100%	
						Total Cost of Equipment	\$ 37,700.60	
						Total Cost of License	\$ 11,250.54	
						Sales Tax For Equipment@ (9.75%)	\$ 3,675.81	
						Total Cost of Installation/Labor	\$ 2,100.00	
						Shipping and Handling	\$ 100.00	
						GRAND TOTAL	\$ 54,826.95	

TABLE IV: Price Proposal – C9350 Switches with 3 Year License

	InTCHSolutions Corporation							
Responder Name:	Brandon Nguyen							
Responder Title:	Project Manager							
Responder SPIN:	143053966							
Responder Phone:	562.607.8829							
GROUP	TEACH Public Schools - C9350 Switches (3-Year License)							
	Model Number	Manufacturer	Description	Unit Cost	Quantity	Extended Cost	E-Rate Eligible %	
Switches	C9350-48P	CISCO SYSTEMS	Cisco 9350 48-port 30W PoE+	\$ 4,525.74	7	\$ 31,680.18	100%	
Switches	C9350-NM-8Y	CISCO SYSTEMS	Cisco C9350 8 x 25G/10G/1G or 4x 50G SFP56 network module	\$ 1,272.71	7	\$ 8,908.97	100%	
Switches	LIC-C9350-48E-3Y	CISCO SYSTEMS	Cloud Essential License for C9350 48 ports, 3-year	\$ 939.94	7	\$ 6,579.58	100%	
GROUP	Installation/Labor Price List							
	Eligible Components	Installer	Description	Cost Per Device	Quantity	Extended Cost	E-Rate Eligible %	
Switches	Switch Installation	InTCHSolutions	Network Switch Installation and Configuration	\$ 300.00	7	\$ 2,100.00	100%	
						Total Cost of Equipment	\$ 40,589.15	
						Total Cost of License	\$ 6,579.58	
						Sales Tax For Equipment@ (9.75%)	\$ 3,957.44	
						Total Cost of Installation/Labor	\$ 2,100.00	
						Shipping and Handling	\$ 100.00	
						GRAND TOTAL	\$ 53,326.17	

TABLE V: Price Proposal – C9350 Switches with 5 Year License

	InTCHSolutions Corporation						
Responder Name:	Brandon Nguyen						
Responder Title:	Project Manager						
Responder SPIN:	143053966						
Responder Phone:	562.607.8829						
GROUP	TEACH Public Schools - C9350 Switches (5-Year License)						
	Model Number	Manufacturer	Description	Unit Cost	Quantity	Extended Cost	E-Rate Eligible %
Switches	C9350-48P	CISCO SYSTEMS	Cisco 9350 48-port 30W PoE+	\$ 4,525.74	7	\$ 31,680.18	100%
Switches	C9350-NM-8Y	CISCO SYSTEMS	Cisco C9350 8 x 25G/10G/1G or 4x 50G SFP56 network module	\$ 1,272.71	7	\$ 8,908.97	100%
Switches	LIC-C9350-48E-5Y	CISCO SYSTEMS	Cloud Essential License for C9350 48 ports, 5-year	\$ 1,566.56	7	\$ 10,965.92	100%
GROUP	Installation/Labor Price List						
	Eligible Components	Installer	Description	Cost Per Device	Quantity	Extended Cost	E-Rate Eligible %
Switches	Switch Installation	InTCHSolutions	Network Switch Installation and Configuration	\$ 300.00	7	\$ 2,100.00	100%
						Total Cost of Equipment	\$ 40,589.15
						Total Cost of License	\$ 10,965.92
						Sales Tax For Equipment@ (9.75%)	\$ 3,957.44
						Total Cost of Installation/Labor	\$ 2,100.00
						Shipping and Handling	\$ 100.00
						GRAND TOTAL	\$ 57,712.51

TABLE VI: Price Proposal – WAP with 1 Year License

	InTCHSolutions Corporation						
Responder Name:	Brandon Nguyen						
Responder Title:	Project Manager						
Responder SPIN:	143053966						
Responder Phone:	562.607.8829						
GROUP	TEACH Public Schools - WAP (1-Year License)						
	Model Number	Manufacturer	Description	Unit Cost	Quantity	Extended Cost	E-Rate Eligible %
WAP	MR57-HW	CISCO SYSTEMS	Meraki MR57 Wi-Fi 6E Indoor AP	\$ 1,050.00	20	\$ 21,000.00	100%
License	LIC-ENT-1YR	CISCO SYSTEMS	Meraki MR Enterprise License, 1YR	\$ 201.00	20	\$ 4,020.00	100%
GROUP	Installation/Labor Price List						
	Eligible Components	Installer	Description	Cost Per Device	Quantity	Extended Cost	E-Rate Eligible %
WAP	WAP Installation	InTCHSolutions	Wireless Access Point Installation	\$ 75.00	20	\$ 1,500.00	100%
Total Cost of Equipment						\$	21,000.00
Total Cost of License						\$	4,020.00
Sales Tax For Equipment@ (9.75%)						\$	2,047.50
Total Cost of Installation/Labor						\$	1,500.00
Shipping and Handling						\$	100.00
GRAND TOTAL						\$	28,667.50

TABLE VII: Price Proposal – WAP with 3 Year License

	InTCHSolutions Corporation						
Responder Name:	Brandon Nguyen						
Responder Title:	Project Manager						
Responder SPIN:	143053966						
Responder Phone:	562.607.8829						
GROUP	TEACH Public Schools - WAP (3-Year License)						
	Model Number	Manufacturer	Description	Unit Cost	Quantity	Extended Cost	E-Rate Eligible %
WAP	MR57-HW	CISCO SYSTEMS	Meraki MR57 Wi-Fi 6E Indoor AP	\$ 1,050.00	20	\$ 21,000.00	100%
License	LIC-ENT-3YR	CISCO SYSTEMS	Meraki MR Enterprise License, 3YR	\$ 455.00	20	\$ 9,100.00	100%
GROUP	Installation/Labor Price List						
	Eligible Components	Installer	Description	Cost Per Device	Quantity	Extended Cost	E-Rate Eligible %
WAP	WAP Installation	InTCHSolutions	Wireless Access Point Installation	\$ 75.00	20	\$ 1,500.00	100%
Total Cost of Equipment						\$ 21,000.00	
Total Cost of License						\$ 9,100.00	
Sales Tax For Equipment@ (9.75%)						\$ 2,047.50	
Total Cost of Installation/Labor						\$ 1,500.00	
Shipping and Handling						\$ 100.00	
GRAND TOTAL						\$ 33,747.50	

TABLE VIII: Price Proposal – WAP with 5 Year License

	InTCHSolutions Corporation						
Responder Name:	Brandon Nguyen						
Responder Title:	Project Manager						
Responder SPIN:	143053966						
Responder Phone:	562.607.8829						
GROUP	TEACH Public Schools - WAP (5-Year License)						
	Model Number	Manufacturer	Description	Unit Cost	Quantity	Extended Cost	E-Rate Eligible %
WAP	MR57-HW	CISCO SYSTEMS	Meraki MR57 Wi-Fi 6E Indoor AP	\$ 1,050.00	20	\$ 21,000.00	100%
License	LIC-ENT-5YR	CISCO SYSTEMS	Meraki MR Enterprise License, 5YR	\$ 755.00	20	\$ 15,100.00	100%
GROUP	Installation/Labor Price List						
	Eligible Components	Installer	Description	Cost Per Device	Quantity	Extended Cost	E-Rate Eligible %
WAP	WAP Installation	InTCHSolutions	Wireless Access Point Installation	\$ 75.00	20	\$ 1,500.00	100%
Total Cost of Equipment						\$	21,000.00
Total Cost of License						\$	15,100.00
Sales Tax For Equipment@ (9.75%)						\$	2,047.50
Total Cost of Installation/Labor						\$	1,500.00
Shipping and Handling						\$	100.00
GRAND TOTAL						\$	39,747.50

TABLE IX: Price Proposal – 360 Hours of Maintenance

	InTCHSolutions Corporation						
Responder Name:	Brandon Nguyen						
Responder Title:	Project Manager						
Responder SPIN:	143053966						
Responder Phone:	562.607.8829						
GROUP	TEACH Public Schools - Basic Maintenance						
	Model Number	Manufacturer	Services Needed	Unit Cost	Quantity	Extended Cost	E-Rate Eligible %
GROUP	Installation/Labor Price List						
	Eligible Components	Installer	Description	Cost Per Hour	Quantity	Extended Cost	E-Rate Eligible %
Basic Maintenance	E-Rate Eligible Devices	InTCHSolutions	360 Hours of basic maintenance services eligible under this Request for Proposal include the repair and upkeep of eligible hardware to ensure continued functionality, along with the maintenance of internal wiring and cabling necessary for reliable network performance. The scope of services also encompasses configuration changes required to sustain optimal system operations, as well as the provision of basic technical support.	\$ 50.00	360	\$ 18,000.00	100%
Total Cost of Equipment						\$	-
Total Cost of License						\$	-
Sales Tax For Equipment@ (9.75%)						\$	-
Total Cost of Installation/Labor						\$	18,000.00
Shipping and Handling							
GRAND TOTAL						\$	18,000.00

7 - REFERENCES

TABLE X: List of References

Project	Customer	Description	Contact
Snowline Unified School District - Surveillance Camera Project	Snowline Unified School District	Security Camera installation 500 plus cameras using A.I. analytics and analysis.	Rick Hernandez Rick_Hernandez@snowlineschools.com
Alliance College-Ready Charter School - Erate 2025	ALLIANCE College-Ready Charter School	District wide cabling project converted old infrastructure from CAT5 to CAT6	Manny Shah Director of Networking Mshah@laalliance.org Maynor Garcia Director of I.T. Magarcia@laalliance.org
El- Tejon Unified School District - Network Refresh (Switch & WiFi) - ERATE 2024	El-Tejon Unified School District	Complete full network refresh of the entire school district. Installed Ruckus Core and Edge switches and Access Points. Migrated the one-premise network to Ruckus One Cloud Management	Director of Technology El Tejon Unified School District MGonzales@el-tejon.k12.ca.us 661-484-3387
TEACH PUBLIC SCHOOL CHARTER ACCESS POINT REFRESH - ERATE 2025	TEACH PUBLIC SCHOOLS CHARTER	Refresh all four locations access points - install CISCO MERAKI ACCESS POINTs for all school sites - configured and tested	Enrique Robles Director of Operations, Data & Technology C: (323) 500-3536 E: erobles@teachps.org

Project	Customer	Description	Contact
TEACH PUBLIC CHARTER Cabling - ERATE 2024	TEACH PUBLIC CHARTER	Cabling Project for the entire TEACH PUBLIC CHARTER school district, adding new CAT6 and maintaining existing network infrastructure	Enrique Robles Director of Operations, Data & Technology C: (323) 500-3536 E: erobles@teachps.org
MDF/IDF E-Rate Refresh Project Design Consulting - ERATE 2024 - 2026	Long Beach Unified School District	Provide design consulting services to LBUSD in preparation for implementation phase of MDF/IDF E-Rate project. Performed design services, auditing, and bill of materials for implementation phase Designed LBUSD Core and Edge switching network	Robert Megowan - Project Manager RMegowan@lbschools.net 562-997-8000 x1320 Shawn Organ - Network Supervisor Sorgan@lbschools.net 949.633.4507

I am writing to provide a letter of reference for Brandon and the team at InTCHSolutions. They have been engaged in delivering design consulting services for the Long Beach Unified School District's (LBUSD) network infrastructure. InTCHSolutions has been a key partner in the ongoing efforts to enhance and optimize the network infrastructure across multiple schools within the district for the upcoming E-Rate switch refreshment project.

Brandon and the team have demonstrated a high level of professionalism, technical expertise, and dedication throughout the entire process. Their work involves serving in an architect's role to design the details of the next implementation phase. Their scope includes surveying over fifty schools to assess the Main Distribution Frame (MDF) and Intermediate Distribution Frame (IDF), writing a scope of work document for bid, developing comprehensive design checklists, updating site maps, and creating detailed Layer 3 and Layer 2 network topology maps and device counts.

One of the notable strengths of InTCHSolutions is their meticulous approach to every aspect of the project. The design checklists they have developed are thorough and tailored to the specific needs of LBUSD, ensuring that all critical elements are taken into consideration. The updated site maps and network topology maps provide a clear and detailed overview of the existing infrastructure, facilitating effective decision-making and future planning.

In addition to their technical proficiency, Brandon and the team have been proactive in collaborating with our staff, ensuring that the design solutions align seamlessly with the unique requirements of LBUSD. Their commitment to communication and responsiveness has been commendable, fostering a collaborative and productive working relationship.

Should you have any further questions or require additional information, please feel free to contact me.



Robert Megowan
Technology Project Manager
Long Beach USD – Facilities Development & Planning
Email: RMegowan@lbschools.net
Phone: 562-997-8000 x1320

Digitally signed by
Robert Megowan
Date: 2024.01.17
09:14:54 -08'00'

To whom it may concern,

I am writing to provide a letter of reference for InTCHSolutions, a company that has consistently demonstrated a high level of expertise in C-7 Cabling, Network Switch, Access Point, and Network Design Infrastructure.

InTCHSolutions has been a valued E-Rate service provider. Their proficiency in C-7 Cabling is commendable, and they have successfully executed projects that required intricate cabling solutions. Their attention to detail and commitment to quality have resulted in robust and reliable cabling systems meeting industry standards.

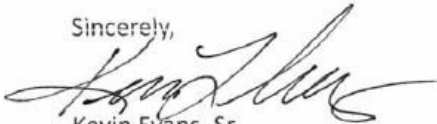
Furthermore, InTCHSolutions' expertise extends to Network Switch and Access Point configurations. They have demonstrated a deep understanding of the latest technologies and industry best practices in setting up and optimizing network switches and access points. Their ability to design and implement scalable and efficient solutions has significantly contributed to the seamless functioning of the network.

In the realm of Network Design infrastructure, InTCHSolutions has showcased exceptional skills. Their team possesses a thorough understanding of network architecture, security considerations, and the integration of various components to create a comprehensive and resilient network design. Their innovative approach to problem-solving and their ability to tailor solutions to our specific needs have been key factors in network projects.

I have consistently found InTCHSolutions to be reliable, professional, and dedicated to delivering high-quality results. Their team is responsive to challenges, proactive in communication, and adept at collaborating with other stakeholders to ensure project success. I confidently recommend InTCHSolutions for any information technology related projects.


If you have any further questions or require additional information, please do not hesitate to contact me at 310 537 1000 / Kevin@convenientcomputing.com. This letter is provided without hesitation or reservation. Thank you for considering InTCHSolutions for your network infrastructure needs.

Sincerely,



Kevin Evans, Sr
Information Technology Director
(Retired, Compton Unified School District)

CTO, Convenient Computing, Inc



Compton Unified School District
Early Childhood Education
411 N. Tajauta Avenue, Compton, CA 90221
Phone: (310) 639-4321, Ext. 46796

January 18, 2024

Denzell Perry
President

Ajanna E. Davis, Ed.D.
Vice President

Micah Ali
Clerk

Alma Taylor Pleasant
Legislative Representative

Satra Zurita
Member

Sandra Moss
Member

Charles Davis
Member

Darin Brawley, Ed.D.
Superintendent

To Whom It May Concern:

I am writing to highlight the exceptional contributions of InTCHSolutions to the Early Childhood Education Department at Compton Unified School District. InTCHSolutions has played a pivotal role in successfully upgrading our computer systems, providing invaluable external information technology consulting, and delivering solutions that have significantly enhanced our technological infrastructure.

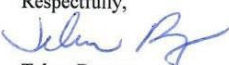
One of the standout qualities of InTCHSolutions is their commitment to ensuring timely and effective solutions. They have consistently demonstrated a proactive approach to identifying and addressing the specific needs of our Early Childhood Education department. Their ability to deliver results within established timelines has been crucial in smoothly executing the computer system upgrade.

In addressing technical issues, InTCHSolutions has proven to be a reliable partner. Their team's expertise has been instrumental in troubleshooting and resolving various technical challenges, contributing to our computer systems' overall stability and functionality. Their prompt response to technical issues has minimized downtime, allowing our staff to focus on providing quality education and support to our students.

In recent efforts, InTCHSolutions is in the process of developing customized inventory and assets management software. This software will be key in efficiently tracking government-funded assets, ensuring accurate record-keeping and compliance with regulatory requirements. The software's user-friendly interface and robust features will streamline our asset management processes, improving efficiency and accountability.

In conclusion, I highly recommend InTCHSolutions for their outstanding contributions to enhancing our computer systems and technology infrastructure. Their commitment to delivering timely solutions, addressing technical issues, and providing innovative software solutions has significantly benefited the Early Childhood Education department at Compton Unified School District.

Please feel free to contact me if you have any further questions or require additional information.

Respectfully,

Telma Bayona,
Director, Early Childhood Education



Compton Unified School District
Roosevelt Elementary School
700 North Bradfield Avenue, Compton, CA 90221
Phone (310) 898-6350 Fax (310) 632-0338



Rayjanette Condley, Principal

Sherry Osborne-Scott, Assistant Principal

January 18, 2024

To Whom It May Concern

I am writing this letter of reference to highly recommend Brandon Nguyen, a dedicated tech representative, for Intech Solutions who has played a crucial role in enhancing the technological infrastructure at Roosevelt Elementary School. Brandon has been instrumental in providing essential electronic equipment, including monitors, lockdown systems, iPad covers, and Chromebook chargers, thereby significantly contributing to the school's educational environment.

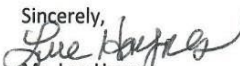
Since Brandon began collaborating with Roosevelt Elementary School, the impact has been palpable. Their commitment to understanding the unique needs of our educational institution and their expertise in sourcing and delivering high-quality electronic devices have greatly benefited both teachers and students.

Among the notable contributions are the provision of state-of-the-art monitors that have improved the visual experience in our front office. The implementation of lockdown systems has added an extra layer of security, ensuring a safe and secure environment for all. Additionally, the durable iPad covers and reliable Chromebook chargers have proven essential in facilitating remote learning initiatives and enhancing the overall accessibility of technology for students.

What sets Brandon apart is not only their proficiency in technology but also their exceptional customer service. He has consistently demonstrated a willingness to go above and beyond to meet our specific requirements, providing timely and tailored solutions to any challenges that arose.

I have received positive feedback from both staff and students regarding the quality of the electronic equipment supplied by Brandon. Their contributions have significantly improved the educational experience at Roosevelt Elementary School, and I have no hesitation in recommending Brandon for any future endeavors.

If you require any further information or details regarding Brandon Nguyen contributions, please feel free to contact me at (310-898-6350).

Sincerely,

Ms. Lue Haynes
School Secretary

8 – CONCLUSION

Thank You for reading InTCHSolutions Corporation proposal for this e-rate project. At InTCHSolutions, we take pride in providing the utmost high quality customer service to the District if given the opportunity. Again, Thank You for your time and consideration.

For additional information, please contact Brandon Nguyen | 562.607.8829 | bnguyen@InTCHSolutions.com or visit www.InTCHSolutions.com

TERMS AND AGREEMENT

Standard Terms and Conditions of Services

PAYMENT TERMS: Invoices shall be submitted twice a month, normally on the first and fifteenth. Bills are due and payable when submitted. A late payment charge of 1-1/2% per month (18% annually) may be applied to amounts outstanding ten days (10) days after the date of the statement.

EQUIPMENT PAYMENT TERMS: Established accounts, Educational Institutions and Government Agencies are net 30 days. All others are payment in full prior to shipping. Customers agree to pay finance charge on all overdue balances.

INTEREST: If payment is not received by INTCHSOLUTIONS within 30 calendar days of the invoice date, the Customer shall pay as interest an additional charge of one- and-one-half (1.5) percent (or the maximum allowable by law, whichever is lower) of the PAST DUE amount per month. Payment thereafter shall first be applied to accrued interest and then to the unpaid principal.

TAXES: Prices shown may not include all sales or other taxes imposed on the sale of goods and services. Taxes now or hereafter imposed upon sales or shipments shall be added to the purchase price. Buyer agrees to reimburse Seller for any such tax or provide Seller with acceptable tax exemption.

COLLECTION COSTS: In the event legal action is necessary to enforce the payment provisions of this Agreement, INTCHSOLUTIONS shall be entitled to collect from the Customer any judgment or settlement sums due, reasonable attorneys' fees, court costs and expenses incurred by INTCHSOLUTIONS in connection therewith and, in addition, the reasonable value of INTCHSOLUTIONS time and expenses spent in connection with such collection action, computed at INTCHSOLUTIONS prevailing fee schedule and expense policies.

SUSPENSION OF SERVICES: If the Customer fails to make payments when due or otherwise is in breach of this Agreement, INTCHSOLUTIONS may suspend performance of services upon five (5) calendar days' notice to the Customer. INTCHSOLUTIONS shall have no liability whatsoever to the Customer for any costs or damages because of such suspension caused by any breach of this Agreement by the Customer.

TERMINATION OF SERVICES: If the Customer fails to make payment to INTCHSOLUTIONS in accordance with the payment terms herein, this shall constitute a material breach of this Agreement and shall be cause for termination by INTCHSOLUTIONS.

SET-OFFS, BACKCHARGES, DISCOUNTS: Payment of invoices is in no case subject to unilateral discounting or set-offs by the Customer, and payment is due regardless of suspension or termination of this Agreement by either party.

RISK OF LOSS OR DAMAGE: INTCHSOLUTIONS shall assume the risk of loss of, or damage to equipment and materials purchased hereunder until they are delivered to the customer's site, at which time the customer assumes such risk. Risk of loss/damage to the customer provided equipment shall remain with the customer.

INDEMNITY AND INSURANCE: Each party shall be responsible for and hold the other party harmless from any loss sustained by such party relating to death, bodily injury, or damage to tangible physical property which is caused by the negligent acts or omissions of the party's agents or employees. INTCHSOLUTIONS shall always obtain and keep in force liability insurance coverage for bodily injury, death, and property damage in an amount not less than One Million Dollars (\$1,000,000.00)

BOND: Costs of Performance and Payment bond is not included. If required, INTCHSOLUTIONS shall furnish Customer, in a form satisfactory to Customer, full and duly executed Performance and Payment Bonds, underwritten by a surety or sureties satisfactory to the Customer, in the full amount of this Agreement. Cost of such bonds to be paid directly by Customer.

ARBITRATION: All claims, disputes, and other matters in question arising out of, or relating to, this Contract or the breach thereof, shall be decided by arbitration in accordance with the Construction Industry Arbitration Rules of the American Arbitration Association then obtaining unless the parties mutually agree otherwise. This agreement to arbitrate shall be specifically enforceable under the prevailing arbitration law. The award rendered by the arbitrators shall be final, and judgment may be entered upon it in accordance with applicable law in any court having jurisdiction thereof. Notice of the demand for arbitration shall be filed in writing with the other party and with the American Arbitration Association. The demand for arbitration shall be made within a reasonable time after the claim, dispute, or other matter in question has arisen, but in no event shall it be made after substantial completion of the project for which this Contract is awarded.

LIABILITY: INTCHSOLUTIONS shall not, in any event, be liable to the customer for incidental or consequential damages, including without limitation, lost business, profit or unavailability of all or part of the system. The pricing granted elsewhere in this agreement is based upon and is in partial consideration for this limitation on remedies.

WARRANTY (Limited): INTCHSOLUTIONS warrants the products installed under this agreement against defects in material and workmanship from a period of one year from project completion. INTCHSOLUTIONS shall repair or replace defective product during the warranty period with new or like new parts. Returned product becomes the property of INTCHSOLUTIONS when replaced. This warranty is void if installed product is abused, misused, or altered. This warranty is exclusive and is Customer's only remedy. Without limiting the generality of the foregoing limitations and disclaimers, while the system is not designed, sold, or intended to be used to detect, intercept, transmit or record oral or other communications of any kind, INTCHSOLUTIONS cannot control how the system and its components are used and, accordingly, INTCHSOLUTIONS does not warrant or represent, expressly or implicitly, that use of the software, licensed materials derived there from will comply and conform to the requirements of Federal, State and or Local statutes, ordinances and laws, or that the use of the system will not violate the privacy rights of the third parties. You shall be solely responsible for using the system you the system in full compliance with applicable law and the rights of third persons. Further, regardless of any prior statements, representations, or course of dealings by any INTCHSOLUTIONS representatives, INTCHSOLUTIONS does not warrant or represent, expressly or implicitly, that the software, licensed materials, or use of any of the same will: result in the prevention of crime or hostile enemy action, apprehension or conviction of any perpetrator of any crime, military prosecution of any enemy force, or detection or neutralization of any criminal, combatant or threat; prevent any loss, death, injury, or damage to property due to the discharge of a firearm or other weapon; in all cases detect and plot the location of all firearm discharges within the designated coverage area; the supplied network will remain in operation at all times or under all conditions. all warranties, express or implied, of fitness for high-risk purposes requiring fail-safe performance are hereby expressly disclaimed. You and INTCHSOLUTIONS each acknowledge and agree that the software, license materials, and the system are not consumer goods, and are not intended for sale to or use by or for personal, family or household use.

OWNERSHIP: INTCHSOLUTIONS shall retain ownership of all materials supplied until final payment for same is received. INTCHSOLUTIONS may retrieve from the Customer's premises any material supplied where payment has not been

IT Network Infrastructure and Architecture | Firewall Security | Cloud Solutions | C7/C10 Cabling and Fiber

tendered. The Uniform Commercial Code of California shall govern this sale and this order shall not be assignable, but shall bind the representative and successors of the parties and their benefits

LIENS: Seller may file a lien within 90 days after furnishing labor, materials, or services to a project as long as preliminary lien notice is sent to Buyer under the provisions of the Construction Lien Law of the state where services are rendered. The lien notice is no way intended to reflect the financial stability of the Buyer, but simply advises the Buyer of Seller's rights to file the lien if required.

RETURNS: Credit may be allowed for goods returned with prior approval. A deduction may be made from credits issued to cover the cost of handling and restocking charges.

DELAYS: Seller is not responsible for delays in delivery or installation occasioned by acts of God or other circumstances over which the Seller has no control.

MISCELLANEOUS: This Agreement constitutes the entire understanding of the parties with respect to the subject matter of this Agreement and merges all prior communications, representations, and agreements.

This Agreement may be modified only by a written agreement signed by the parties. If any provision of this Agreement is held to be unenforceable for any reason, such provision shall be reformed only to the extent necessary to make it enforceable. This Agreement shall be construed under the laws of the state where services are rendered, excluding rules regarding conflicts of law.

IN WITNESS WHEREOF, the Parties have caused this Agreement to be executed and do each hereby warrant and represent that their respective signatory whose signature appears below has been and is on the date of this Agreement duly authorized by all necessary and appropriate corporate action to execute this Agreement.

SELLER: _____ CUSTOMER: _____

Signature: _____ Signature: _____

Printed Name: _____ Printed Name: _____

Title: _____ Title: _____

Date: _____ Date: _____