

Spectrum Enterprise

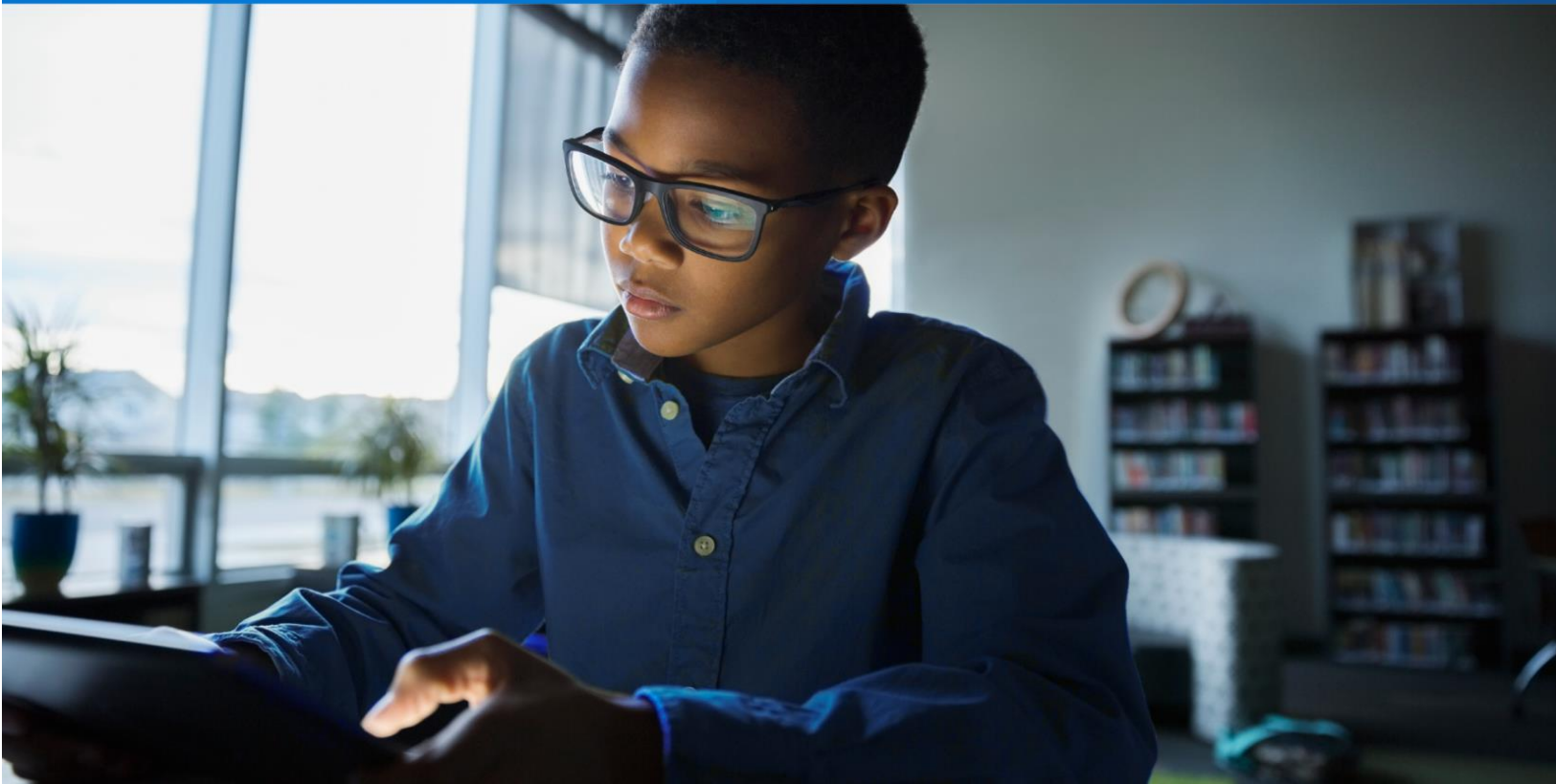
Proposal for TEACH Public Schools

Form 470 Number: 210026087

Submission Date: 3/24/2021

Presented To:
Enrique Robles
Director of Operations, Data & Technology
10000 S. Western Ave
Los Angeles, CA 90047
erate@teachps.org

Presented By:
Ms. Bonny Thompson
Strategic Account Manager - Gov't/Ed
17777 Center Court Dr.
Cerritos, CA 90703
(562) 677-0472
bonny.thompson@charter.com



Charter Communications Operating, LLC SPIN: 143050436

Spectrum
ENTERPRISE

Wednesday, March 24, 2021

Enrique Robles
Director of Operations, Data & Technology
TEACH Public Schools
10000 S. Western Ave
Los Angeles, CA 90047
erate@teachps.org

Dear Mr. Robles:

Spectrum Enterprise¹ is pleased to submit the enclosed proposal in response to your Request for Proposal (RFP). Our response demonstrates Spectrum's ability to provide Ethernet that will enable TEACH Public Schools to meet its technology needs.

Continuing our partnership ensures TEACH Public Schools will continue to benefit from a strong telecommunications foundation, and maximizes TEACH Public Schools ability to create new opportunities and drive innovation without incurring the extra costs associated with service transitions and unknown fees. As you are aware, Spectrum provides advanced broadband services to more than 16,000 schools and libraries representing over 2,500 school districts across the country making us one of the top service providers within the E-rate program.

Thank you for the opportunity to submit this response to your RFP. We are available to discuss our submission in further detail at your convenience.

Sincerely,

A handwritten signature in black ink that reads "Irwin Whistler".

[Irwin Whistler \(Mar 22, 2021 09:32 PDT\)](#)

¹ Spectrum Enterprise is a commercial brand of Charter Communications, Inc. The legal entity proposing hereunder is Charter Communications Operating, LLC a subsidiary of Charter Communications, Inc.

TERMS OF OFFER

This proposal alone shall not be considered an acceptance of an offer by TEACH Public Schools or otherwise be sufficient to create a binding contract between TEACH Public Schools and Spectrum.

Spectrum's bid is based upon services being delivered under the terms of the Spectrum Enterprise Service Agreement which incorporates the Spectrum Enterprise Commercial Terms of Service (available at <https://enterprise.spectrum.com/legal/se-terms-and-conditions.html> or any successor URL), plus any related attachments, Service Level Agreements and applicable Service Order(s) (collectively, the "Agreement").

Spectrum remains open to negotiating the Agreement, and once a mutually negotiated contract is entered into by the parties, it shall supersede and replace any terms and conditions of the RFP.

In the event only a portion of Spectrum's proposal is accepted, Spectrum reserves the right to further negotiate the terms of such partial acceptance prior to final bid award acceptance by Spectrum.

In the event of a bid award to Spectrum by TEACH Public Schools based on this proposal, if the full Agreement is not executed by the applicable FCC submission deadline due to delays in negotiation, and the parties have not terminated such negotiations, then for purposes of FCC rules and related USAC requirements, an agreement incorporating the terms of the Spectrum Enterprise Service Agreement and the bid locations, services, bandwidth capacities, and pricing contained in this proposal will be deemed to exist.

The terms of this proposal are confidential and should not be disclosed directly or indirectly to any third party, except as may be required by law.

The qualifications stated herein apply to all parts, provisions, and documents of the RFP and Spectrum's response, regardless of whether an explicit exception or qualification is taken thereto by Spectrum.

TABLE OF CONTENTS

Terms Of Offer	3
Terms and Abbreviations	5
Executive Summary	6
Spectrum Service Proposal	8
Fiber Internet Access (FIA).....	13
Ethernet Services	15
Ethernet Private Local Area Network overview	17

TERMS AND ABBREVIATIONS

Technology evolves at a rapid pace and Spectrum stays on the cutting edge of that evolution. The names of specific technologies or services are sometimes cumbersome and become abbreviated for colloquial use. We have provided a list of the terms used throughout this proposal and have defined them for your convenience.

SINGLE LOCATION TERMS	ABBREVIATION
INFORMATION TECHNOLOGY	IT

SERVICE PROPOSAL TERMS	ABBREVIATION
PRIVATE BRANCH EXCHANGE	PBX
MONTHLY RECURRING CHARGE	MRC
ONE-TIME CHARGE	OTC
QUANTITY	QTY
SERVICE CAPACITY	SVC. CAP.
INTERNET PROTOCOL	IP
DIRECT INWARD DIAL	DID
MINUTES OF USE	MOU

ETHERNET SERVICES TERMS	ABBREVIATION
CARRIER ETHERNET	CE
CUSTOMER PREMISE EQUIPMENT	CPE
ETHERNET PRIVATE LINE	EPL
ETHERNET PRIVATE LOCAL AREA NETWORK	EP-LAN
ETHERNET VIRTUAL CONNECTION	EVC
ETHERNET VIRTUAL PRIVATE LINE	EVPL
METRO ETHERNET FORUM	MEF
TIME-DIVISION MULTIPLEXING	TDM
USER-TO-NETWORK INTERFACE	UNI
WIDE AREA NETWORK	WAN

FIA TERMS	ABBREVIATION
FIBER INTERNET ACCESS	FIA
LOCAL AREA NETWORK	LAN
NETWORK OPERATIONS CENTER	NOC
SERVICE LEVEL AGREEMENT	SLA

MANAGED NETWORKS SERVICES TERMS	ABBREVIATION
UNIFIED THREAT MANAGEMENT	UTM

EXECUTIVE SUMMARY

Spectrum Enterprise (“Spectrum”), a commercial brand of Charter Communications, is pleased to provide this response illustrating our ability to provide TEACH Public Schools with broadband services. We take pride in being an innovative resource for businesses, schools and communities. Our reliable and economical service is a natural fit with your mission.

Bring Advanced and Affordable Technology to Your Schools and Libraries

Advanced communications services and computing technologies in the classroom have become vital to education. Unfortunately, today’s challenging economic environment has put education and technology budgets under tremendous pressure. It is a challenge for schools to get access to technologies that help drive greater student achievements.

The Federal Government created the E-rate Program to help with the need for communications services and budgeting problems. Funded by the Universal Service Administrative Company (USAC), this program offers 20-90 percent off standard retail rates on eligible communications services to eligible schools, libraries, and their districts. Federally funded E-rate discounts have made today’s technology more affordable.

Spectrum’s Solution

Since 1998, Spectrum has worked with thousands of E-rate accounts. We understand the E-rate program and how best to benefit from it. Our experience in this area will provide E-rate specialists who understand:

- ▶ rules and regulations to participate in the program
- ▶ billing and standard discounts

Technology and education have converged, and your communications needs are growing rapidly.

Get Powerful Services with the Financial Benefits of E-rate

Research shows that technology use is a top-five indicator of better discipline, better attendance, and increases in college enrollment. Educational organizations are leveraging E-rate by partnering with Spectrum to reduce cost and implement technology for greater student achievement. We have invested the time and effort to ensure our sales and support teams have the expertise to help you get the best services through the E-rate program.

Unsurpassed Expertise and Customer Support

A network of specially trained, industry experts supports Spectrum. We have around-the-clock, U.S.-based business support centers and knowledgeable, locally based technicians who are specifically trained to help with your unique needs. Our dedicated work ethic, shared knowledge, and proprietary systems allow us to ensure that the

solutions we are quoting TEACH Public Schools will match your specific and discrete needs.

When you collaborate with Spectrum for communications services, we assign a dedicated account team who will support your services:

- ▶ **Account Executive:** a dedicated, local market expert who is available for your consultation needs
- ▶ **Sales Engineering:** trained technical experts who customize designs based on your needs.
- ▶ **E-rate Specialists:** experienced with E-rate rules and regulations and are billing and standard discounts experts
- ▶ **Project Management:** customer focused experts who manage your build and communicate with you every step of the way
- ▶ **Account Manager:** your point of contact; responsible for providing you with accurate billing and consultation on future growth needs
- ▶ **Network Operations Center:** Spectrum staff that continuously monitors the network

E-rate clients have direct access to our Government Subsidized Programs (GSP) department who specialize in E-rate, RHC, and CTF programs. To support E-rate program participation, Spectrum Enterprise:

- ▶ Provides to client an FCC Form 471 Funding Recommendation Letter after the FCC Form 470 and awarded Service Agreement review.
- ▶ Reviews FCC Form 471 for possible errors and omissions and distributes to the client accompanying RAL Modification recommendation necessary to maximize eligible funding.
- ▶ Monitors SPI invoice submissions and SPI discount application (FCC Form 474).
- ▶ Will be available to address program questions, or concerns via email.

Renewal Plan

As your incumbent provider, we have developed this proposal with the benefit of our experience, and have based it on our knowledgeable understanding of your requirements. Our combination of technology services and proposed cost, based on actual experience with TEACH Public Schools, provides an incredible value. By choosing once again to collaborate with Spectrum, you will be choosing a vendor with the proven infrastructure and experienced team currently in place to support the program. It is Spectrum's objective to continue our partnership with you while continuing to focus on responsiveness, transparency, and continuity of services. It is with that focus we have developed our proposal response to the RFP.

SPECTRUM SERVICE PROPOSAL

These prices will remain in effect throughout the Initial Order Term, subject to the following contingencies:

- ▶ final engineering, design and site visits; and
- ▶ acceptance of and entering into the Spectrum Enterprise Service Agreement (as may be negotiated by the parties as stated in the Terms of Offer section above), which shall govern the contractual relationship between the parties and the provision of the services under such contract.

Investment for Spectrum Services Based on a 12, 36, or 60 Month Initial Order Term

A: LOCATION ADDRESS	Product	Speed	Term	QTY	MRC Each	OTC Each
10616 S Western Ave, Los Angeles CA	FIA	1G	12	1	\$850.00	\$0.00
	FIA	2G	12	1	\$2,800.00	\$0.00
	FIA	5G	12	1	\$4,800.00	\$0.00
	FIA	10G	12	1	\$5,300.00	\$0.00
	Static IP	5	12	1	\$0.00	\$0.00
10616 S Western Ave, Los Angeles CA	FIA	1G	36	1	\$800.00	\$0.00
	FIA	2G	36	1	\$2,080.00	\$0.00
	FIA	5G	36	1	\$2,300.00	\$0.00
	FIA	10G	36	1	\$4,800.00	\$0.00
	Static IP	5	36	1	\$0.00	\$0.00
10616 S Western Ave, Los Angeles CA	FIA	1G	60	1	\$750.00	\$750.00
	FIA	2G	60	1	\$1,820.00	\$0.00
	FIA	5G	60	1	\$3,050.00	\$0.00
	FIA	10G	60	1	\$4,100.00	\$0.00
	Static IP	5	60	1	\$0.00	\$0.00
10616 S Western Ave, Los Angeles CA	ELAN	1G	12	1	\$900.00	\$0.00
	ELAN	2G	12	1	\$900.00	\$0.00
	ELAN	5G	12	1	\$1,055.00	\$0.00
	ELAN	10G	12	1	\$1,055.00	\$0.00
10616 S Western Ave, Los Angeles CA	ELAN	1G	36	1	\$347.50	\$0.00
	ELAN	2G	36	1	\$536.50	\$0.00
	ELAN	5G	36	1	\$536.50	\$0.00
	ELAN	10G	36	1	\$536.50	\$0.00
10616 S Western Ave, Los Angeles CA	ELAN	1G	60	1	\$387.50	\$0.00
	ELAN	2G	60	1	\$530.00	\$0.00

	ELAN	5G	60	1	\$530.00	\$0.00
	ELAN	10G	60	1	\$530.00	\$0.00
10600 S Western Ave, Los Angeles CA	FIA	1G	12	1	\$850.00	\$0.00
	FIA	2G	12	1	\$2,800.00	\$0.00
	FIA	5G	12	1	\$4,800.00	\$0.00
	FIA	10G	12	1	\$5,300.00	\$0.00
	Static IP	5	12	1	\$0.00	\$0.00
10600 S Western Ave, Los Angeles CA	FIA	1G	36	1	\$800.00	\$0.00
	FIA	2G	36	1	\$2,080.00	\$0.00
	FIA	5G	36	1	\$2,300.00	\$0.00
	FIA	10G	36	1	\$4,800.00	\$0.00
	Static IP	5	36	1	\$0.00	\$0.00
10600 S Western Ave, Los Angeles CA	FIA	1G	60	1	\$750.00	\$750.00
	FIA	2G	60	1	\$1,820.00	\$0.00
	FIA	5G	60	1	\$3,050.00	\$0.00
	FIA	10G	60	1	\$4,100.00	\$0.00
	Static IP	5	60	1	\$0.00	\$0.00
10600 S Western Ave, Los Angeles CA	ELAN	1G	12	1	\$900.00	\$0.00
	ELAN	2G	12	1	\$900.00	\$0.00
	ELAN	5G	12	1	\$1,055.00	\$0.00
	ELAN	10G	12	1	\$1,055.00	\$0.00
10600 S Western Ave, Los Angeles CA	ELAN	1G	36	1	\$347.50	\$0.00
	ELAN	2G	36	1	\$536.50	\$0.00
	ELAN	5G	36	1	\$536.50	\$0.00
	ELAN	10G	36	1	\$536.50	\$0.00
10600 S Western Ave, Los Angeles CA	ELAN	1G	60	1	\$387.50	\$0.00
	ELAN	2G	60	1	\$530.00	\$0.00
	ELAN	5G	60	1	\$530.00	\$0.00
	ELAN	10G	60	1	\$530.00	\$0.00
8505 S Western Ave, Los Angeles CA	FIA	1G	12	1	\$850.00	\$0.00
	FIA	2G	12	1	\$2,800.00	\$0.00
	FIA	5G	12	1	\$4,800.00	\$0.00
	FIA	10G	12	1	\$5,300.00	\$0.00
	Static IP	5	12	1	\$0.00	\$0.00
8505 S Western Ave, Los Angeles CA	FIA	1G	36	1	\$800.00	\$0.00
	FIA	2G	36	1	\$2,080.00	\$0.00
	FIA	5G	36	1	\$2,300.00	\$0.00

	FIA	10G	36	1	\$4,800.00	\$0.00
	Static IP	5	36	1	\$0.00	\$0.00
8505 S Western Ave, Los Angeles CA	FIA	1G	60	1	\$750.00	\$750.00
	FIA	2G	60	1	\$1,820.00	\$0.00
	FIA	5G	60	1	\$3,050.00	\$0.00
	FIA	10G	60	1	\$4,100.00	\$0.00
	Static IP	5	60	1	\$0.00	\$0.00
8505 S Western Ave, Los Angeles CA	ELAN	1G	12	1	\$900.00	\$0.00
	ELAN	2G	12	1	\$900.00	\$0.00
	ELAN	5G	12	1	\$1,055.00	\$0.00
	ELAN	10G	12	1	\$1,055.00	\$0.00
8505 S Western Ave, Los Angeles CA	ELAN	1G	36	1	\$347.50	\$0.00
	ELAN	2G	36	1	\$536.50	\$0.00
	ELAN	5G	36	1	\$536.50	\$0.00
	ELAN	10G	36	1	\$536.50	\$0.00
8505 S Western Ave, Los Angeles CA	ELAN	1G	60	1	\$387.50	\$0.00
	ELAN	2G	60	1	\$530.00	\$0.00
	ELAN	5G	60	1	\$530.00	\$0.00
	ELAN	10G	60	1	\$530.00	\$0.00
10000 S Western Ave, Los Angeles CA	FIA	1G	12	1	\$850.00	\$0.00
	FIA	2G	12	1	\$2,800.00	\$0.00
	FIA	5G	12	1	\$4,800.00	\$0.00
	FIA	10G	12	1	\$5,300.00	\$0.00
	Static IP	5	12	1	\$0.00	\$0.00
10000 S Western Ave, Los Angeles CA	FIA	1G	36	1	\$800.00	\$0.00
	FIA	2G	36	1	\$2,080.00	\$0.00
	FIA	5G	36	1	\$2,300.00	\$0.00
	FIA	10G	36	1	\$4,800.00	\$0.00
	Static IP	5	36	1	\$0.00	\$0.00
10000 S Western Ave, Los Angeles CA	FIA	1G	60	1	\$750.00	\$750.00
	FIA	2G	60	1	\$1,820.00	\$0.00
	FIA	5G	60	1	\$3,050.00	\$0.00
	FIA	10G	60	1	\$4,100.00	\$0.00
	Static IP	5	60	1	\$0.00	\$0.00
10000 S Western Ave, Los Angeles CA	ELAN	1G	12	1	\$900.00	\$0.00
	ELAN	2G	12	1	\$900.00	\$0.00
	ELAN	5G	12	1	\$1,055.00	\$0.00

	ELAN	10G	12	1	\$1,055.00	\$0.00
10000 S Western Ave, Los Angeles CA	ELAN	1G	36	1	\$347.50	\$0.00
	ELAN	2G	36	1	\$536.50	\$0.00
	ELAN	5G	36	1	\$536.50	\$0.00
	ELAN	10G	36	1	\$536.50	\$0.00
10000 S Western Ave, Los Angeles CA	ELAN	1G	60	1	\$387.50	\$0.00
	ELAN	2G	60	1	\$530.00	\$0.00
	ELAN	5G	60	1	\$530.00	\$0.00
	ELAN	10G	60	1	\$530.00	\$0.00
10045 S Western Ave, Los Angeles CA	FIA	1G	12	1	\$850.00	\$0.00
	FIA	2G	12	1	\$2,800.00	\$0.00
	FIA	5G	12	1	\$4,800.00	\$0.00
	FIA	10G	12	1	\$5,300.00	\$0.00
	Static IP	5	12	1	\$0.00	\$0.00
10045 S Western Ave, Los Angeles CA	FIA	1G	36	1	\$800.00	\$0.00
	FIA	2G	36	1	\$2,080.00	\$0.00
	FIA	5G	36	1	\$2,300.00	\$0.00
	FIA	10G	36	1	\$4,800.00	\$0.00
	Static IP	5	36	1	\$0.00	\$0.00
10045 S Western Ave, Los Angeles CA	FIA	1G	60	1	\$750.00	\$750.00
	FIA	2G	60	1	\$1,820.00	\$0.00
	FIA	5G	60	1	\$3,050.00	\$0.00
	FIA	10G	60	1	\$4,100.00	\$0.00
	Static IP	5	60	1	\$0.00	\$0.00
10045 S Western Ave, Los Angeles CA	ELAN	1G	12	1	\$900.00	\$0.00
	ELAN	2G	12	1	\$900.00	\$0.00
	ELAN	5G	12	1	\$1,055.00	\$0.00
	ELAN	10G	12	1	\$1,055.00	\$0.00
10045 S Western Ave, Los Angeles CA	ELAN	1G	36	1	\$347.50	\$0.00
	ELAN	2G	36	1	\$536.50	\$0.00
	ELAN	5G	36	1	\$536.50	\$0.00
	ELAN	10G	36	1	\$536.50	\$0.00
10045 S Western Ave, Los Angeles CA	ELAN	1G	60	1	\$387.50	\$0.00
	ELAN	2G	60	1	\$530.00	\$0.00
	ELAN	5G	60	1	\$530.00	\$0.00
	ELAN	10G	60	1	\$530.00	\$0.00

Pricing is provided only for the sites shown in the Service Proposal. Pricing for additional sites shall be determined upon Spectrum's receipt of site information for the new service location, evaluation of the requested services, performance of surveys, and other information that may be required.

Pricing shown above is exclusive of taxes, fees and surcharges. MRCs and OTCs are subject to taxes, fees and surcharges as described in Section 7(b) (Taxes, Surcharges and Fees) of the Spectrum Enterprise Service Agreement.

FIBER INTERNET ACCESS (FIA)

Accelerate your organization with a reliable, powerful and dedicated Internet access service

Today's organizations depend on high-performing Internet solutions to keep critical applications up and running and business operating. Without a dependable Internet connection, network resources are constrained, impacting both employees and customers.

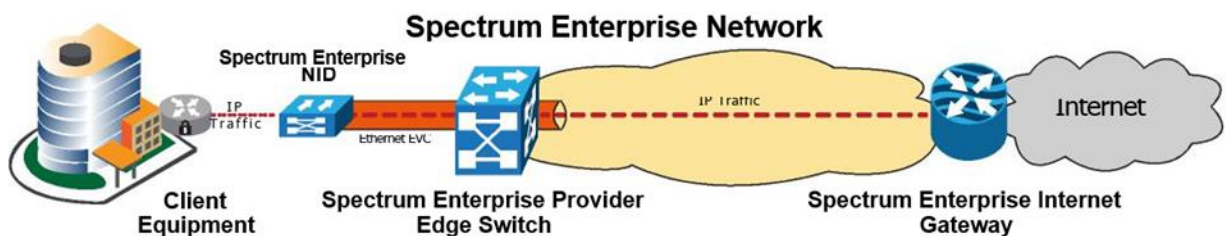
Spectrum Enterprise Fiber Internet Access (FIA) is a dedicated service that offers reliable nationwide connectivity with performance and support you can always count on. Delivering scalable Internet access, we provide 99.99% service availability all the way to the equipment at your location. Connect wherever you are with a service available nationwide that accelerates the pace of your organization.

Product Highlights

- Superior performance – Improves business productivity through a high-performing Internet service ensuring reliable connectivity
- Scalability and reach – Provides an easily scalable platform with national reach and dense metro coverage to support current and future bandwidth needs
- Business continuity – Optional diversity solutions to support Internet uptime in the event of a wireline disruption
- End-to-end support – Reduces complexity via a single, nationwide partner providing one resource team, one contact point for services and support including the in-building connection
- Cost effective – FIA delivers value with competitive, straightforward pricing

Key Features

- Dedicated connection that is not shared with others, delivered over a reliable advanced fiber network
- Industry-leading service-level agreement (SLA) metrics offer availability, low latency, jitter and packet loss all the way into the client suite
- Symmetrical access that scales from 25 Mbps to 10 Gbps from a single provider
- 24/7/365 US-based support and local technicians
- Multiple physical diversity and redundancy options to help protect your network



PRODUCT BRIEF FIBER INTERNET ACCESS

Optional managed network services

- Enhance FIA with a suite of complementary managed services products designed to protect, simplify and improve the performance of your network.
- Managed Security Service – Reduce the risk of external Internet threats with a comprehensive security service
- DDoS Protection – Protect your network from malicious volumetric attacks with world-class threat identification and mitigation
- Managed WiFi – Connect to the Internet seamlessly, anywhere with consistent and easily accessible WiFi
- Managed Router Service – Optimize your network routing with an all-inclusive expertly managed service

FIA technical specifications

Network

- IP over IEEE 802.3-based, full-duplex, noncircuit switched services
- Provisioned via our advanced fiber-rich network from the client premises to one of many hub locations throughout the Spectrum Enterprise network footprint
- Multiple levels of network fault tolerance provide a highly reliable and secure Internet access service
- Fiber access circuit is unaffected by electromagnetic interference

Routing

- Static or border gateway protocol (BGP) traffic routing options

Internet Access Demarcation

- Fiber connections to the Spectrum Enterprise network are monitored 24/7/365 via a dedicated network interface device (NID)
- Traffic is routed over the Spectrum Enterprise IP network until it is required to travel to the public network in order to reach its destination
- Demarc extension included for most buildings in footprint

Static IP addresses

- Initial IP block is included
- Additional IP address space available upon request
- Support for dual stacking of IPv4 and IPv6

ETHERNET SERVICES

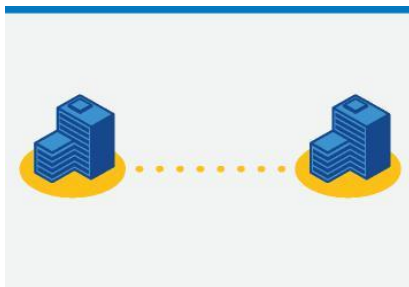
Link your locations with nationwide reach, leverage bandwidth-intensive applications, connect to leading cloud service providers and fortify your business continuity plans. Do it all with customized Ethernet Services from Spectrum Enterprise.

Ethernet Services Overview

Simplify your wide-area network (WAN) infrastructure for secure, seamless collaboration. Cost-effectively connect your locations with simple, flat-rate pricing. Empower your IT staff with network visibility via a secure Ethernet services portal providing real-time status updates and reporting capabilities.

Ensure network reliability by partnering with one of the largest Ethernet providers in the U.S. with more MEF CECP 2.0-certified professionals than any other provider. This means your evolving business can depend on Ethernet services from an industry leader with a robust, fiber-rich network and highly competitive service-level agreements.

MEF CE 2.0-certified topologies for any business



Point-to-point

Ethernet Private Line (EPL)

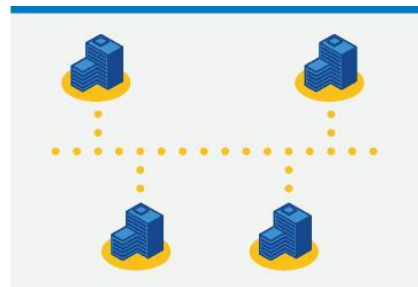
For businesses with two locations, EPL is a cost-effective, reliable, high-capacity business Ethernet solution. EPL connects client premises equipment (CPE) with a lower-cost User Network Interface (UNI), making it a smart alternative to traditional TDM private-line service.



Point-to-multipoint

Ethernet Virtual Private Line (EVPL)

EVPL offers a reliable, high-bandwidth and cost-effective alternative to legacy TDM private-line, frame-relay or ATM service. It enables companies with a central office and satellite locations to communicate and collaborate seamlessly on one robust, secure network.



Multipoint-to-multipoint Ethernet Private LAN (EP-LAN)

Combining the privacy of traditional ATM/frame-relay or private-line service with the performance and resiliency of IP VPN, EP-LAN is ideal for connecting multiple campuses. Now, widespread locations can share one seamless, secure network with the bandwidth to elevate productivity and efficiency to new levels.



PRODUCT BRIEF
Ethernet Services

SpectrumEnterprise.net

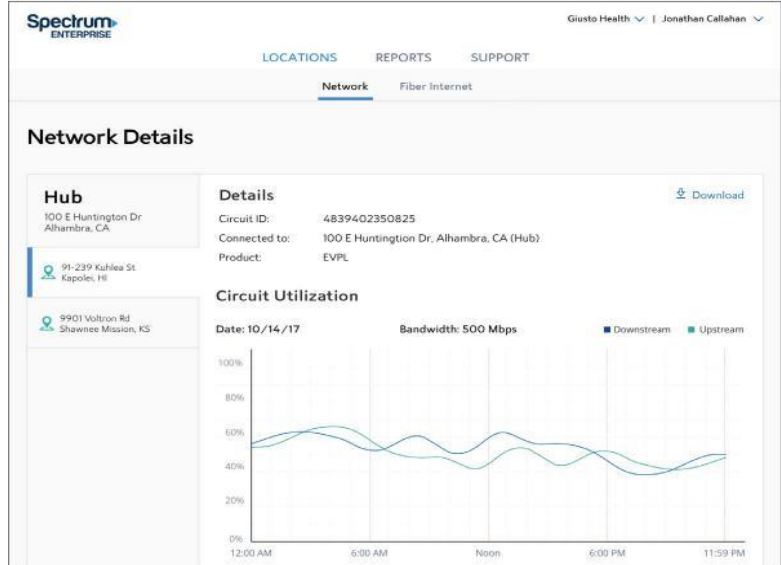
The Spectrum Enterprise client portal provides visibility to your Ethernet services anytime, anywhere and on any device. See your network inventory and circuit performance through interactive graphs and downloadable reports.

Available reporting:

- ▶ Utilization
- ▶ Availability
- ▶ Frame delay
- ▶ Frame delay variation
- ▶ Frame loss ratio

The screenshot shows the 'Network Locations' page in the Spectrum Enterprise portal. It features a table with columns for Location, City, State, Product, Circuit ID, and Bandwidth (Mbps). A 'Download CSV' link is visible in the top right corner.

Location	City	State	Product	Circuit ID	Bandwidth (Mbps)
1343 Hueytown Rd	Bessemer	AL	EPL	Hub	2,000
1 Independent Plz	Birmingham	AL	EPL	33.L2XX.009979..TWCC-5445	2,000
3950 Atlanta Hwy	Montgomery	AL	EPL	Hub	100
1761 E Main St	Partville	AL	EPL	75.L9XX.D04326..TWCC-4632	100
1533 Sierra Hwy	Acton	CA	EVPL	Hub	4,000
100 E Huntington Dr	Alhambra	CA	EVPL	12.L1XX.229382..TWCC-9325	1,000
91-239 Kuhela St	Kapolei	HI	EVPL	52.L2XX.229382..TWCC-6122	200
9901 Widmer Rd	Shawnee Mission	KS	EVPL	87.L3XX.223343..TWCC-5234	500
6501 Mission Bay Dr	San Diego	CA	EPL	Hub	1,000
7263 Engineer Rd	San Diego	CA	EPL	21.L1XX.D08824..TWCC-6203	50



Learn more

enterprise.spectrum.com/ethernet

ETHERNET PRIVATE LOCAL AREA NETWORK OVERVIEW

Ethernet Private LAN (EP-LAN) enables any-to-any connectivity for businesses that need to connect all their locations on a single network. EP-LAN brings together cost-effectiveness, speed, simplicity and flexibility in a broadly customizable [Ethernet](#) solution.

EP-LAN provides a multipoint-to-multipoint Ethernet Wide Area Network (WAN) that extends your Local Area Network (LAN) to a Metro or Wide Area Network that allows your company's business-critical applications and data to travel seamlessly across the entire network. EP-LAN can move large amounts of information between sites, quickly and securely.

EP-LAN benefits

- ▶ **Privacy:** All data travels within the secure domain of a Layer 2, dedicated, high capacity, point-to-point connection at native Ethernet speeds.
- ▶ **Standards-Based:** Depend on Ethernet Private LAN (EP-LAN) MEF 2.0 certifications.
- ▶ **Single Interconnection:** A hub aggregates all data traffic on a single network linking all your business locations.
- ▶ **Traffic Separation:** Maintain discrete pathways when you consolidate previously separate domains for specific applications or departments onto a single network.
- ▶ **Cost Savings:** A single handoff reduces network equipment and management costs.

TEACH Public Schools | BEN: 17022941 2021-2022 Funding Year: E-RATE Bid Information Form 470 Category 1

TEACH Public Schools District operates 4 Schools that provide individualized education to our students.

OUR MISSION

The mission of TEACH Public Schools is to create a high quality, innovative teaching, and learning environment that focuses on literacy, integrating state-of-the-art technologies across the core curriculum to achieve academic proficiency for all students.

OUR LOCATIONS

BEN	SCHOOL NAME	SCHOOL ADDRESS
17019804	TEACH Preparatory Elementary	8505 S. Western Ave. Los Angeles, CA
17022929	TEACH Academy of Technologies (Purple)	10000 S. Western Ave. Los Angeles, CA
16071381	TEACH Academy of Technologies (Gold)	10045 S. Western Ave. Los Angeles, CA
16082080	TEACH Tech Charter High School	10616 S. Western Ave. Los Angeles, CA
17023162	TEACH Public Schools Central Office / TTCHS	10600 S. Western Ave. Los Angeles, CA

E-RATE CONTACT INFORMATION

Mr. Enrique Robles
 Director of Operations, Data and Technology
erate@teachps.org | 323-872-0808 ext. 7624

**CATEGORY 1: TELECOMMUNICATIONS AND WIDE AREA NETWORK (WAN)
CONNECTIVITY**

Internet Access Request

Lit Fiber

TEACH Public Schools, hereafter referred to as Applicant, is requesting proposals for Leased Lit Fiber Service. Pricing should include dedicated, consistent symmetrical bandwidth. The new service is expected to begin on July 1, 2021, which represents the expiration of the current service. In addition, TEACH would like to have the option of having an ELAN allowing for a Fiber connection between all 5 locations.

Please review Spectrum's Service Proposal for pricing, Initial Order Term, Service Location(s), bandwidth information and service offering.

The Monthly Recurring Charge will remain firm throughout the Initial Order Term of the Service Order. Non-Recurring Charges (NRCs) and Monthly Recurring Charges (MRCs) are exclusive of taxes, fees and surcharges. Spectrum shall have the right to increase MRCs for each Service after the Initial Order Term for such Service upon thirty (30) days' notice to Customer. Customer shall be invoiced Service Charges in accordance with Spectrum's Service Agreement.

Spectrum's proposal is based on the information provided in this RFP and is accurate to the best of its knowledge. If during the course of installation Spectrum determines additional work is necessary to enable Spectrum to deliver the Services to the Service Location, Spectrum will notify Customer of any additional Service Charges in excess of the amounts previously specified in a quote or Service Order. If Customer does not agree to pay such Service Charges by executing a revised Service Order within five (5) business days of receiving the same, Customer and Spectrum shall each have the right to terminate the applicable Service Order. Spectrum may act as Customer's agent for ordering access connection facilities provided by other providers or entitles when authorized by Customer to allow connection of a Service Location to the Network.

So long as Customer properly performs all necessary site preparation and provides Spectrum with all required consents, Spectrum shall endeavor to meet the July 1, turn-up date for Universal Service Administrative Company (USAC) funding. However, due to time constraints which are required for construction, designs, permits, and various other factors, Spectrum may not be able to meet the USAC funding date. Therefore, Spectrum encourages new customers to file for funding at the earliest availability within USAC's guidelines and obtain a Funding Commitment Decision Letter, to allow Spectrum as much time as possible to meet the July 1, turn-up date. Additionally, it may be in the best interest of Spectrum's new customers to file through USAC for temporary funding for their current provider for a period sufficient to cover Spectrum's implementation timeline. Spectrum's implementation goal is 90 to 120 days, however, upon award, a more accurate estimate will be provided once a project team has been assigned.

Information Requested

- Bid Format: Two copies of the bid in hard copy plus one copy available electronically or via Google Drive or Dropbox with all the files of the bid electronically.

Spectrum understands and has complied.

- Contract term: TEACH is seeking to receive multi-year [1,3,5] contract options. [3 or 5 years] contracts should allow for upgrades to quoted

bandwidth throughout the terms of the contract.

Please review Spectrum's Service Proposal herein for pricing, Initial Order Term, Service Location(s), bandwidth information and service offering.

Customer shall have the option to add Services and increase speed and bandwidth during the Order Term of the Service Order. Customer will notify Spectrum of its desired additional Services or increased speed and bandwidth and, provided that Spectrum is able and willing to provide the requested change in Services, Customer shall be responsible for the corresponding increase in Monthly Recurring Charges for such additional Services or increased speed and bandwidth, as well as construction and installation costs (if applicable). Added services may be coterminous if the parties agree upon appropriate Monthly Recurring Charges and any non-recurring charges to correspond with the decreased initial term for such additional Services. Spectrum agrees to include terms within individual Service Orders that set forth the specific upgrade options available to the Customer during the Order Term.

- The cost to provide Internet Access (Bandwidth). Bidder's price shall include the following:
 - The available bandwidth should be a minimum of 500 Mbps and up to 10 Gbps
 - The service hand-off shall be direct to the Owner's supplied Local Area Network.
 - Internet access availability of 24 hours, 7 days a week, 365 days a year.

Please review Spectrum's Service Proposal herein for pricing, Initial Order Term, Service Location(s), bandwidth information and service offering.

The Monthly Recurring Charge will remain firm throughout the Initial Order Term of the Service Order. Non-Recurring Charges (NRCs) and Monthly Recurring Charges (MRCs) are exclusive of taxes, fees and surcharges. Spectrum shall have the right to increase MRCs for each Service after the Initial Order Term for such Service upon thirty (30) days' notice to Customer. Customer shall be invoiced Service Charges in accordance with Spectrum's Service Agreement.

Spectrum's obligation is to provide Communications Services to the customer-accessible interface device or equipment installed by Spectrum at the Spectrum Network Demarcation Point at the Service Location. The "Demarcation Point" is the point of interconnection between the Spectrum Equipment or other facilities and the wiring at

the Service Location. Additional charges may be applicable to extend the demarc for any sites identified as a Type II Service Location.

Unless otherwise set forth in an Attachment or service level agreement, Spectrum will use commercially reasonable efforts to provide the Services to Customer twenty-four (24) hours per day, seven (7) days per week. It is possible, however, that there will be interruptions of Service. The Service may be unavailable from time-to-time either for scheduled or unscheduled maintenance, technical difficulties, or for other reasons beyond Spectrum's reasonable control. Temporary service interruptions or outages for such reasons, as well as service interruptions or outages caused by Customer, its agents and employees, or by a Force Majeure Event, shall not constitute a failure by Spectrum to perform its obligations under this Service Agreement.

- Include any one-time and recurring costs.

Please review Spectrum's Service Proposal herein for pricing, Initial Order Term, Service Location(s), bandwidth information and service offering.

The Monthly Recurring Charge will remain firm throughout the Initial Order Term of the Service Order. Non-Recurring Charges (NRCs) and Monthly Recurring Charges (MRCs) are exclusive of taxes, fees and surcharges. Spectrum shall have the right to increase MRCs for each Service after the Initial Order Term for such Service upon thirty (30) days' notice to Customer. Customer shall be invoiced Service Charges in accordance with Spectrum's Service Agreement.

Spectrum's proposal is based on the information provided in this RFP and is accurate to the best of its knowledge. If during the course of installation Spectrum determines additional work is necessary to enable Spectrum to deliver the Services to the Service Location, Spectrum will notify Customer of any additional Service Charges in excess of the amounts previously specified in a quote or Service Order. If Customer does not agree to pay such Service Charges by executing a revised Service Order within five (5) business days of receiving the same, Customer and Spectrum shall each have the right to terminate the applicable Service Order. Spectrum may act as Customer's agent for ordering access connection facilities provided by other providers or entitles when authorized by Customer to allow connection of a Service Location to the Network.

- Support agreements, including response times.

Spectrum has included its SLA(s) as part of its response. Please review for specific information related to Spectrum's service metrics, outages, maintenance and applicable remedies.

- Timeline stating the number of days that services will be operational from the date of order.

So long as Customer properly performs all necessary site preparation and provides Spectrum with all required consents, Spectrum shall endeavor to meet the Customer's desired installation date. However, due to time constraints which are required for construction, designs, permits and various other factors, Spectrum will only commit to an estimated timeframe for delivery of Service. Spectrum's implementation goal is typically 90-120 days after full execution of a resulting contract and applicable service order by the parties, however, upon award, a more accurate estimation will be provided once a project team has been assigned.

The "Initial Order Term" is the time period starting on the date the Services are functional in all material respects and available for use (the "Billing Start Date"), and continuing for the period of time specified in the Service Order(s).

Upon award of the project, Spectrum will meet with your technical staff to create the project work plan. The work plan will include an assessment of site readiness with specific recommendations based upon site visits. Spectrum will jointly prepare a project work schedule with Teach Public Schools, identifying key project milestones.

We will assign a team experienced in designing, implementing, and maintain large-scale networks to this project. We dedicate in-house project managers who will be the point of contact for the project life cycle. Our project managers understand the importance of meeting deadlines and satisfying customer expectations.

Spectrum operates with a team concept. We ensure work is crosschecked and resources are available to provide backup support, as needed, and that are knowledgeable in the processes and procedures used in this project.

Upon completion of the construction, the project will be handed off to a local Network Technician who will install the Spectrum equipment, as applicable, at each respective Teach Public Schools' site. The Network Technician will work with the Network Operations Center to verify connectivity and to provision the correct bandwidth. We will notify you once installation and testing are complete, and service is available for use.

Spectrum's implementation plan is an estimate only. Actual dates and periods may vary due to, but not limited to, inclement weather. The estimate for your service delivery is expected to be 90 days.

- Provide a minimum of three (3) K-12 public school district and/or charter school organizations references within California.

Spectrum reference(s) may be provided upon bid award or thereafter, subject to obtaining the applicable consents from any such reference(s).

Instructions to Vendors General Information

All responses shall conform to instructions provided in this Request for Proposal (RFP) document.

Spectrum understands.

Deadline for RFP Submittal

Vendors must submit all required documents before the deadline (see the timeline for exact dates). All proposals shall be complete and final with no additional information required after the close of the submittal date unless specifically requested by TEACH. Responses received after the deadline will be returned unopened as not meeting the RFP requirements.

All proposals shall be firm offers subject to acceptance by TEACH and may not be withdrawn for a period of 90 calendar days following the last day to submit bids. Proposals may not be amended once submitted to TEACH, except as permitted by TEACH.

It is the sole responsibility of the person submitting the proposal to ensure that it is delivered on time.

Two (2) hard copies of the proposal and 1 electronic copy must be received by 3/24/2021 12:00 PM local time (PST) at the following address:

TEACH Public Schools
Attn: Enrique Robles, Director of Operations, Data & Technology
10000 S. Western Ave. Los Angeles, CA 90047
erate@teachps.org

Proposals received after the exact time and date noted will NOT be considered for the bid process.

Please refer to the Terms of Offer section of Spectrum's proposal. Spectrum's proposal, including pricing, shall be valid for 180 days from the date of Spectrum's submittal of the proposal. In the event an order is not placed within 180 days, Spectrum reserves the right to update pricing based on , but not limited to, current installation costs, construction and equipment costs, remaining term and engineering and design specifications.

TEACH shall not be responsible for, nor accept as a valid excuse for a late proposal delivery, any delay in mail service, or other methods of delivery used by the proposer.

Spectrum understands.

Request for Proposal Preparation Cost

Costs for preparing responses and any other related material are the responsibility of the vendor and shall not be chargeable in any manner to TEACH. TEACH will not be held liable for any cost incurred by vendors in responding to the RFP.

Spectrum understands.

Vendor Qualifications

The vendor must be in business, providing the services requested for a minimum of three (3) years and have an office within 50 miles of Los Angeles.

Spectrum understands and complies and has an office in Cerritos California.

Right to Reject Any and All Quotes

TEACH reserves the right to reject any or all quotation submissions and to waive any informalities or regularities. The Service Provider's quotation submission is recognition of this right.

In addition, TEACH reserves the right to fund, (proceed with project or purchase) or not to fund, regardless of E-Rate approval.

In the event only a portion of Spectrum's proposal is accepted, Spectrum reserves the right to further negotiate the terms of such partial acceptance prior to final bid award acceptance by Spectrum.

Customer's Service Order will include the following E-rate Contingency Language:

E-RATE FUNDING CONTINGENCY

Customer may submit this Service Order and the Services Agreement to the Schools and Libraries Division of the Universal Service Administrative Company, (i.e., the entity appointed by the Federal Communications Commission to administer the Universal Service Program with respect to Schools and Libraries ("E-Rate") funding) as part of any application seeking a federal subsidy or funding.

Customer is responsible for notifying Spectrum of its election of either the Service Provider Invoice ("SPI") or Billed Entity Applicant Reimbursement ("BEAR") discount method by May 15th prior to the applicable funding year. Customer must complete and return an "E-Rate Discount Election Form" to Spectrum prior to such date, or Customer will be deemed to have chosen the BEAR discount method for the funding year.

Upon Spectrum's receipt of appropriate notice that Customer is an approved E-Rate program participant for a Service, Spectrum will invoice Customer for the Service in accordance with E-Rate guidelines and/or rules. If Spectrum invoices Customer for a Service pursuant to any E-Rate program rates, discounts or credits in advance of receiving such notice and Customer's request for E-Rate program funding is denied, limited or reduced, Spectrum will invoice Customer and Customer will pay the difference between such invoiced amount(s) and the actual amount of the Service Charges, as described in this Service Order. Notwithstanding anything herein to the contrary, Customer's obligations under this Service Order shall remain in full force and effect in the event Customer withdraws or is removed from the E-Rate program, receives E-Rate program funding that is less than Customer's requested funding amount, or is denied E-Rate program funding for any Service described in this Service Order. For the avoidance of doubt, Customer is solely responsible for all Service Charges, as described in this Service Order, that were installed prior to the E-Rate program funding year start date.

Bid Protests

Any bidder who submitted a proposal to TEACH may file a protest if each and all of the following are complied with:

- The protest is in writing;
- The protest is filed and received by the Chief Operating Officer not more than three (3) calendar days following the date of the District's selection of the apparent lowest responsible bidder;
- The written protest sets forth, in detail, all grounds for the protest, including without limitation all facts, supporting documentation, legal authorities, and arguments in support of the grounds for the protest; any matters not outlined in the written protest shall be deemed waived. All factual contentions must be supported by competent, admissible and credible evidence.

Any protest not conforming to the foregoing shall be rejected by the District as invalid. Provided that a protest is filed in strict conformity with the foregoing, the Chief Operating Officer or such individual(s) as may be designated in his/her discretion, shall review and evaluate the basis of the protest, and shall provide a written decision to the bidder submitting the protest concurring with or denying the protest. The District's written decision shall be final and not subject to reconsideration or appeal. No bidder shall seek judicial relief, in any form, relative to TEACH's intent to award the Contract, or the protest thereof, unless the foregoing protest procedure has been strictly and timely complied with by the bidder. The issuance of a written decision by TEACH shall be an express condition precedent to the institution of any legal proceeding relative to the

proposal process, TEACH's intent to award the Contract, or TEACH's determination to reject all proposals.

Spectrum reserves the right to any remedy that it may have available in law or equity with regards to the RFP response.

OUR TIMELINE (SUBJECT TO CHANGE)

- March 2021 – Bidder Questions due to erate@teachps.org by 4:00 PM PST
- March 2021 – Applicant Answers by 4:00 PM PST
- March 2021- Bid Submittal due (physical copies and electronic copy to erate@teachps.org) by 12:00 PM PST
- March 25, 2021 _ Intent to Award Announced by 12pm

EVALUATION CRITERIA	
Price of the Eligible Services	40 points
Implementation Timeline/Transition Plan	25 points
Experience with E-rate	15 points
The ability of the Vendor to Deliver to all sites	10 points
Experience with TEACH	10 points
Total	100 points

TEACH PUBLIC SCHOOLS E-RATE SUPPLEMENTAL TERMS AND CONDITIONS

Signed copy to be returned with bid response.

The Telecommunications Act of 1996 established a fund by which Schools and Libraries across the Country could access discounts on eligible telecommunications products and services. The program is commonly known as the E-rate Program. The eligibility for discounts on internet access, telecommunications products and services, internal connection products, services and maintenance is determined by the Federal Communications Commission (FCC). Funding is made available upon application approval by the Schools and Libraries Division (SLD) of the Universal Service Administrative Company (USAC), which was established by the Act. The amount of discount is based on the numbers of students receiving free and reduced-price meals.

1) E-RATE CONTINGENCY

The project herein is contingent upon the approval of funding from the Universal Service Fund's Schools and Libraries Program, otherwise known as E-rate. Even after award of contract(s) and/or E-rate funding approval is obtained, the District (or "Applicant") may or may not proceed with the project, in whole or in part.

Execution of the project, in whole or in part, is solely at the discretion of the District (or "Applicant").

In the event only a portion of Spectrum's proposal is accepted, Spectrum reserves the right to further negotiate the terms of such partial acceptance prior to final bid award acceptance by Spectrum.

Please refer to the E-rate Contingency above for details related to funding.

2) SERVICE PROVIDER REQUIREMENTS

The District (or "Applicant") expects Service Providers to make themselves thoroughly familiar with any rules or regulations regarding the E-rate program. District (or "Applicant") is required to post both this RFP and Form 470 on the USAC EPC Portal site <http://www.usac.org/sl/tools/e-rate-productivity-center/default.aspx>. Questions and responses will be posted in all locations. If there is a discrepancy between in documentation posted in multiple locations, the controlling (master) document will always be located on the District (or "Applicant") website.

- a. Service Providers are required to be in full compliance with all current

requirements and future requirements issued by the SLD throughout the contractual period of any contract entered as a result of this RFP.

Spectrum complies with all applicable USAC rules and regulations, and will invoice the District for the Services in accordance with E-rate guidelines. Spectrum complies with all LCP rules and applicable laws, ordinances, rules and regulations relating to its performance obligations specified in the Service Agreement.

- b. Service Providers are responsible for providing a valid SPIN (Service Provider Identification Number). More information about obtaining a SPIN may be found at this website: <http://www.usac.org/sl/service-providers/step01/default.aspx>

Charter Communications Operating, LLC SPIN is 143050436.

- c. Service Providers are responsible for providing a valid Federal Communications Commission (FCC) Registration Number (FRN) at the time the bid is submitted.

More information about obtaining an FRN may be found at this website: <https://fjallfoss.fcc.gov/coresWeb/publicHome.do>

Charter Communications Operating, LLC FRN is 0002526580.

- d. Products and services must be delivered before billing can commence. At no time may the Service Provider invoice before July 1, 2021.

So long as Customer properly performs all necessary site preparation and provides Spectrum with all required consents, Spectrum shall endeavor to meet the July 1, turn-up date for Universal Service Administrative Company (USAC) funding. However, due to time constraints which are required for construction, designs, permits, and various other factors, Spectrum may not be able to meet the USAC funding date. Therefore, Spectrum encourages new customers to file for funding at the earliest availability within USAC's guidelines and obtain a Funding Commitment Decision Letter, to allow Spectrum as much time as possible to meet the July 1, turn-up date. Additionally, it may be in the best interest of Spectrum's new customers to file through USAC for temporary funding for their current provider for a period sufficient to cover Spectrum's implementation timeline. Spectrum's implementation goal is 90 to 120 days, however, upon award, a more accurate estimate will be provided once a project team has been assigned.

ORDER TERM. The "Initial Order Term" is the time period starting on the date the Services are functional in all material respects and available for use (the "Billing Start Date"), and continuing for the period of time specified in

the Service Order(s). If no Initial Order Term is specified in a Service Order, the Initial Order Term is twelve (12) months from the Billing Start Date.

- e. Prices must be held firm for the duration of the associated E-rate Funding Year(s) or until all work associated with the project is complete (including any contract and USAC approved extensions).

The MRC shall remain firm throughout the Initial Order Term of the Service Order. MRCs and NRCs are exclusive of applicable taxes, surcharges and fees. Customer will be invoiced Service Charges in accordance with Spectrum's Service Agreement. Spectrum will have the right to increase MRCs for each Service after the Initial Order Term for such Service upon thirty (30) days' notice to Customer.

After the Initial Order Term of the Service Order for Services reflected in Spectrum's proposal, and upon written request from Customer, Spectrum agrees to extend such Service Order for up to two (2) consecutive twelve (12) month renewal periods at the same monthly recurring charge applicable during the Initial Order Term. If Customer does not exercise such renewal options, and neither party has terminated the Service Order in accordance with the terms of the Service Agreement between the Parties, then at the end of the then current Order Term, the Service Order shall automatically renew on a month-to-month basis. The foregoing Service Order extension option is subject to more specific terms to be reflected in the applicable Service Order.

- f. Goods and services provided shall be clearly designated as "E-rate Eligible". Non-eligible goods and services shall be clearly called out as 100% non-eligible or shall be "cost allocated" to show the percentage of eligible costs per SLD guidelines.

Spectrum understands. Please review Spectrum's Service Proposal herein for pricing, Initial Order Term, Service Location(s), bandwidth information and service offering.

- g. In the event of questions during an E-rate pre-commitment review, post-commitment review and/or audit inquiry, the awarded Service Provider is expected to reply within 3 days to questions associated with its proposal.

Spectrum understands and will comply.

- h. The awarded Service Provider is required to send copies of all forms and invoices to the District (or "Applicant") prior to invoicing USAC for pre-

approval. Failure to comply with this requirement may result in the District (or "Applicant") placing the vendor on an "Invoice Check" with the USAC (<http://www.usac.org/sl/applicants/step07/invoice-check.aspx>)

Spectrum understands and will comply.

- i. Services providers must comply with the FCC rules for Lowest Corresponding Price ("LCP"). Further details on LCP may be obtained at USAC's website: <http://www.usac.org/sl/service-providers/step02/lowest-corresponding-price.asp>

Spectrum complies with all applicable USAC rules and regulations, and will invoice the District for the Services in accordance with E-rate guidelines. Spectrum complies with all LCP rules and applicable laws, ordinances, rules and regulations relating to its performance obligations specified in the Service Agreement.

3) SERVICE PROVIDER ACKNOWLEDGEMENTS

- a. The Service Provider acknowledges that no change in the products and/or services specified in this document will be allowed without prior written approval from the District (or "Applicant") and a USAC service substitution approval with the exception of a Global Service Substitutions.

Spectrum has the right, but not the obligation, to upgrade, modify, and enhance the Spectrum Network and the Service and take any action that Spectrum deems appropriate to protect or improve the Service and its facilities.

Change Requests. Any charges associated with Service and Spectrum Equipment or Customer Equipment installations, changes, or additions requested by Customer subsequent to executing a Service Order for the applicable Service Location are the sole financial responsibility of Customer. Spectrum shall notify Customer of any additional OTCs and/or adjustments to MRCs associated with or applicable to such Customer change requests prior to making any such change. Customer's failure to accept such additional charges within five (5) business days of receiving such notice shall be deemed a rejection by Customer, and Spectrum shall not be liable to perform any work giving rise to such charges. For accepted charges, Customer shall be assessed such additional OTCs and/or adjustments of the MRCs either (i) in advance of implementation of the change request or (ii) beginning on Customer's next and/or subsequent invoice(s).

- b. The Service Provider acknowledges that all pricing and technology infrastructure information in its bid shall be considered as public and non-confidential pursuant to §54.504 (2)(i)(ii).

Spectrum agrees that its bid is not confidential, except to the extent any portion of the bid or response documents are marked as confidential and/or proprietary.

- c. The Service Provider acknowledges that its offer is considered to be the lowest corresponding price pursuant to § 54.511 (b). Should it not be the lowest corresponding price, the service provider must disclose the conditions leading to the applicant being charged in excess of lowest corresponding price.

Spectrum understands.

- d. This offer is in full compliance with USAC's Free Services Advisory <http://www.usac.org/sl/applicants/step02/free-services-advisory.aspx>. There are no free services offered that would predicate an artificial discount and preclude the applicant from paying its proportionate non-discounted share of costs. The service provider agrees to provide substantiating documentation to support this assertion should the applicant, USAC, or the FCC request it.

Spectrum understands.

4) STARTING SERVICES/ADVANCE INSTALLATION – Category 1 Services

The annual E-rate Funding Year begins on July 1 and expires on June 30 of each calendar year. Regardless of the contract “effective date”, E-rate eligible goods and/or services requested in this RFP shall be delivered no earlier than the start of the 2021 funding year (July 1, 2021). If Category 1 services (Telecommunication Services and Internet access) will begin on or shortly after July 1 of a funding year, the service provider, in some cases, may need to undertake some construction and installation work prior to the beginning of that funding year. Within the limitations indicated below, the infrastructure costs of a service provider can be deemed to be delivered at the same time that the associated Category 1 services begin. That is, if services begin on July 1, then the delivery of service provider infrastructure necessary for those services can be considered as also delivered on July 1. However, NO INVOICING can take place prior to July 1 of the associated Funding Year.

So long as Customer properly performs all necessary site preparation and provides Spectrum with all required consents, Spectrum shall endeavor to meet the Customer’s desired installation date. However, due to time constraints which are required for construction, designs, permits and various other factors, Spectrum will

only commit to an estimated timeframe for delivery of Service. Spectrum's implementation goal is typically 90-120 days **after full execution of a resulting contract and applicable service order by the parties**, however, upon award, a more accurate estimation will be provided once a project team has been assigned.

ORDER TERM. The "Initial Order Term" is the time period starting on the date the Services are functional in all material respects and available for use (the "Billing Start Date"), and continuing for the period of time specified in the Service Order(s). If no Initial Order Term is specified in a Service Order, the Initial Order Term is twelve (12) months from the Billing Start Date.

5) **INVOICING**

- a. The Service Provider agrees to bill and receive a portion of the payment for the provisions of goods and services described herein directly from USAC via the Form 474 Service Provider Invoice (SPI). The District (or "Applicant") will only be responsible for paying its non-discounted share of costs and does not intend to use the BEAR process (Form 472). The maximum percentage the District (or "Applicant") will be liable for is the pre- discount amount minus the funded amount as shown on the FCC Form 471 Block 5 and any identified ineligible costs. Upon the successful receipt or posting of a Funding Commitment Decision Letter from the SLD and submission, certification and USAC approval of Form 486, the District (or "Applicant") shall pay only the discounted amount beginning with the billing cycle immediately following said approval. Alternatively, should the District (or "Applicant") decide that it is in the best interest of the District (or "Applicant") to file a Form 472, the District (or "Applicant") will inform the Service Provider of its intent.

Spectrum will provide discounts via the Service Provider Invoice (SPI) Form 474 as long as the customer has been funded through the E-rate program, in which case discounts will be applied to the billing account via credit adjustments. The District may also choose to file a form 472, the Billed Entity Applicant Reimbursement (BEAR) Form. Spectrum will only invoice Universal Service Administration Company (USAC) via SPI Form 474 once funding has been committed and the applicant has filed the form 486 and Receipt of Service Confirmation Form with USAC.

Upon award, Spectrum will make recommendations to the District to assist with the applicable paperwork.

- b. All Service Provider invoicing to USAC must be completed within 120 days from the last day of service. Should the Service Provider fail to invoice USAC in a timely manner, the District (or "Applicant") will only

be responsible for paying its non-discounted share.

Charges. Spectrum invoices for monthly recurring charges specific to the Service(s) (“MRCs”), plus applicable taxes, fees, and surcharges, in advance on a monthly basis. Spectrum invoices for non-recurring, one-time charges (“OTCs”) for construction or installation charges after the Billing Start Date or as specified in the Service Order. All other charges, including usage-based charges (e.g., phone usage, pay-per view charges), will be invoiced monthly in arrears. Service Charges are payable within thirty (30) days after the date appearing on the invoice. If Spectrum fails to present a Service Charge in a timely manner, such failure shall not constitute a waiver of the charges for the Services to which it relates, and Customer shall be responsible for and pay such Service Charges when invoiced in accordance with these payment terms. Spectrum shall have the right to increase MRCs for each Service after the Initial Order Term for such Service upon thirty (30) days’ notice to Customer.

6) FCC/SLD AUDITABILITY

The E-rate program requires that all records be retained for at least ten (10) years from the last date of service provided on a particular funding request. Respondent hereby agrees to retain all books, records, and other documents relative to any Agreement resulting from this RFP for ten (10) years after final payment. The District (or “Applicant”), its authorized agents, and/or auditors reserves the right to perform or have performed an audit of the records of the Respondent and therefore shall have full access to and the right to examine any of said materials within a reasonable period of time during said period.

To the extent required by applicable law, Spectrum shall keep complete and accurate documents, information, and records concerning the Services provided to Customer in accordance with Spectrum’s policy. As allowed by applicable law, Customer may audit such documents, information and records for the previous 12-month period not more than one time per year and Customer’s audit rights shall be limited to documents, information and records pertaining to Services provided to Customer and not with respect to other customers. Audits undertaken by Customer shall be limited to Spectrum’s operations only, and Spectrums confidential financial information, network systems, books, records, and accounts shall not be made available for audit. Spectrum may require Customer’s auditors to sign a reasonable non-disclosure agreement. All audits shall be at Customer’s expense.

7) PROCUREMENT OF ADDITIONAL GOODS AND/OR SERVICES/COTERMINOUS EXPIRATION

During the term of any Agreement resulting from this RFP, the District (or “Applicant”) may elect to procure additional or like goods and/or services

offered by the Respondent. Such services shall be negotiated and obtained via an official amendment to this Agreement and approval by the District (or "Applicant")'s Governing Board. All terms, conditions, warranties, obligations, maintenance and support of said goods or services shall have a coterminous expiration date with the original date of this Agreement. The District (or "Applicant") shall not enter into a separate Agreement for said goods or services. Respondents must state in their proposal that they acknowledge, accept and agree with coterminous expiration conditions.

Please review Spectrum's Service Proposal herein for pricing, Initial Order Term, Service Location(s), bandwidth information and service offering.

Customer shall have the option to add Services and increase speed and bandwidth during the Order Term of the Service Order. Customer will notify Spectrum of its desired additional Services or increased speed and bandwidth and, provided that Spectrum is able and willing to provide the requested change in Services, Customer shall be responsible for the corresponding increase in Monthly Recurring Charges for such additional Services or increased speed and bandwidth, as well as construction and installation costs (if applicable). Added services may be coterminous if the parties agree upon appropriate Monthly Recurring Charges and any non-recurring charges to correspond with the decreased initial term for such additional Services. Spectrum agrees to include terms within individual Service Orders that set forth the specific upgrade options available to the Customer during the Order Term.

Change Requests. Any charges associated with Service and Spectrum Equipment or Customer Equipment installations, changes, or additions requested by Customer subsequent to executing a Service Order for the applicable Service Location are the sole financial responsibility of Customer. Spectrum shall notify Customer of any additional OTCs and/or adjustments to MRCs associated with or applicable to such Customer change requests prior to making any such change. Customer's failure to accept such additional charges within five (5) business days of receiving such notice shall be deemed a rejection by Customer, and Spectrum shall not be liable to perform any work giving rise to such charges. For accepted charges, Customer shall be assessed such additional OTCs and/or adjustments of the MRCs either (i) in advance of implementation of the change request or (ii) beginning on Customer's next and/or subsequent invoice(s).

Pricing is provided only for the sites shown in the Service Proposal. Pricing for additional sites shall be determined upon Spectrum's receipt of site information for the new service location, evaluation of the requested services, performance of surveys, and other information that may be required.

The terms of this RFP are subject to the Terms of Offer section of Spectrum's proposal.

I, the undersigned, as an authorized agent of **Charter Communications Operating, LLC** (Service Provider Name), hereby certify that I have read the [-rate Supplemental Terms and Conditions, am fully compliant and intend to cooperate with the [-rate process as outlined above.

Signature: *Irwin Whistler* Irwin Whistler (Mar 22, 2021 09:32 PDT) **Title:** Director of Strategic Sales

Phone Number: 562-677-0472

Email: bonny.thompson@charter.com

Service Provider Name: Charter Communications Operating, LLC

Spectrum Enterprise Fiber Internet Access Service Level Agreement

This document outlines the Service Level Agreement (“SLA”) for Fiber Internet Access (“FIA”) fiber-based service (the “Service”).

This SLA is a part of, and hereby incorporated by reference into the Spectrum Enterprise Service Agreement (including the terms and conditions, attachments, and Service Orders described therein, the “Agreement”). To the extent any provision of this SLA conflicts with the Agreement, this SLA shall control. This SLA document applies only to services provided over Spectrum Enterprise’s own network (“On-Net”) and not any portion that is provided by a third party. All SLA Targets in the table below are measured at the individual circuit or service level, and any applicable credits are issued only for the affected On-Net circuit or service (the “Affected Service”). Capitalized words used, but not defined herein, shall have the meanings given to them in the Agreement.

I. SLA Targets for On-Net Services:

Service Availability	Mean Time To Restore (“MTTR”)	Latency / Frame Delay (Roundtrip)	Jitter / Frame Delay Variation	Packet Loss / Frame Loss
End to End: 99.99%	Priority 1 Outages within 4 hours	45ms	<2ms	<0.1%

II. Priority Classification:

A “Service Disruption” is defined as an outage, disruption, or severe degradation, other than an Excluded Disruption, that interferes with the ability of a Spectrum Enterprise network hub to: (i) transmit and receive network traffic on Customer’s dedicated access port at the Spectrum Enterprise network hub; and (ii) exchange network traffic with another Spectrum Enterprise network hub. The Service Disruption period begins when Customer reports a Service Disruption using Spectrum Enterprise’s trouble ticketing system by contacting Customer Care, Spectrum Enterprise acknowledges receipt of such trouble ticket, Spectrum Enterprise validates that the Service is affected, and Customer releases the Service for testing. The Service Disruption ends when the affected Service has been restored.

“Service Degradation” means a degradation of the Service that is not a Service Disruption or a result of an Excluded Disruption, such as failure of the Service to achieve the SLA Targets for Latency / Frame Delay, Jitter / Frame Delay Variation, or Packet / Frame Loss.

“Excluded Disruptions” means (i) planned outages, (ii) routine or urgent maintenance, (iii) time when Spectrum Enterprise is unable to gain access to Customer’s premises, if necessary, (iv) service issues arising from acts of omissions of Customer or Customer’s representatives or agents, (v) Customer equipment failures, (vi) Customer is not prepared to release the Service for testing, and (vii) Force Majeure Events.

Spectrum Enterprise will classify Service problems as follows:

Priority	Criteria
Priority 1	Each a “Priority 1 Outage”: <ul style="list-style-type: none"> • Service Disruption resulting in a total loss of Service; or • Service Degradation to the point where Customer is unable to use the Service and is
Priority 2	Service Degradation where Customer is able to use the Service and is not prepared to release it for immediate testing.
Priority 3	<ul style="list-style-type: none"> • A service problem that does not impact the Service; or • A single non-circuit specific quality of Service inquiry.

III. Service Availability

“Service Availability” is calculated as the total number of minutes in a calendar month less the number of minutes that the On-Net Service is unavailable due to a Priority 1 Outage (“Downtime”), divided by the total number of minutes in a calendar month.

The following table contains examples of the percentage of Service Availability translated into minutes of Downtime for the 99.99% Service Availability Target:

Percentage by Days Per	Total Minutes /	Downtime
99.99% for 31 Days	44,640	4.5
99.99% for 30 Days	43,200	4.3
99.99% for 29 Days	41,760	4.2
99.99% for 28 Days	40,320	4

IV. Mean Time to Restore (“MTTR”)

The MTTR measurement for Priority 1 Outages is the average time to restore Priority 1 Outages during a calendar month calculated as the cumulative length of time it takes Spectrum Enterprise to restore an On-Net Service following a Priority 1 Outage in a calendar month divided by the corresponding number of trouble tickets for Priority 1 Outages opened during the calendar month for the On-Net Service.

MTTR per calendar month is calculated as follows:

$$\frac{\text{Cumulative length of time to restore Priority 1 Outage(s) per On-Net Service}}{\text{Total number of Priority 1 Outage trouble tickets per On-Net Service}}$$

V. Latency / Frame Delay

Latency or Frame Delay is the average roundtrip network delay, measured every 5 minutes during a calendar month, unless measurement is not possible as a result of an Excluded Disruption, to adequately determine a consistent average monthly performance level for frame delay for each On-Net Service. The roundtrip delay is expressed in milliseconds (ms). Spectrum Enterprise measures frame delay on an end-to-end basis using a standard 64 byte ping from the Customer dedicated access port at the Customer premise to the Spectrum Enterprise Internet access router in a roundtrip fashion.

Latency is calculated as follows:

$$\text{Latency/Frame Delay} = \frac{\text{Sum of the roundtrip delay measurements for an On-Net Service}}{\text{Total \# of measurements for an On-Net Service}}$$

VI. Packet Loss / Frame Loss Ratio

Packet Loss or Frame Loss Ratio is defined as the percentage of frames that are not successfully received compared to the total frames that are sent in a calendar month, except where any packet or frame loss is the result of an Excluded Disruption. The percentage calculation is based on frames that are transmitted from a network origination point and received at a network destination point (Spectrum Enterprise network hub to Customer dedicated access port at the Customer premise).

Packet Loss / Frame Loss Ratio is calculated as follows:

$$\text{Packet Loss / Frame Loss (\%)} = 100 (\%) - \text{Frames Received (\%)}$$

VII. Jitter / Frame Delay Variation

Jitter or Frame Delay Variation is defined as the variation in delay for two consecutive frames that are transmitted (one-way) from a network origination point and received at a network destination point (Spectrum Enterprise network hub to Customer dedicated access port at the Customer premise). Spectrum Enterprise measures a sample set of frames every 5 minutes during a calendar month, unless measurement is not possible as a result of an Excluded Disruption, and determines the average delay between consecutive frames within each sample set. The monthly Jitter / Frame Delay Variation is calculated as the average of all of the frame delay variation measurements during such calendar month and is expressed in milliseconds (ms).

$$\text{Jitter/Frame Delay} = \frac{\text{Sum of the roundtrip delay measurements for an On-Net Service}}{\text{Total \# of measurements for an On-Net Service}}$$

VIII. Network Maintenance

Maintenance Notice:

Customer understands that from time to time, Spectrum Enterprise will perform network maintenance for network improvements and preventive maintenance. In some cases, Spectrum Enterprise will need to perform urgent network maintenance, which will usually be conducted within the routine maintenance windows. Spectrum Enterprise will use reasonable efforts to provide advance notice of the approximate time, duration, and reason for any urgent maintenance outside of the routine maintenance windows.

Maintenance Windows:

Routine maintenance may be performed Monday – Friday 12 a.m. – 6 a.m. Local Time.

IX. Remedies

Service Credits:

If the actual performance of an On-Net Service during any calendar month is less than the SLA Targets and Customer is in compliance with the terms of the Agreement and this SLA, then Customer may request credit equal to the corresponding percentage of monthly Service Charges for the Affected Service as set forth in the table below. Any credit to be applied will be off-set against amounts due from Customer to Spectrum Enterprise in the billing cycle following the date Spectrum Enterprise makes its credit determination. Credit requests must be submitted to Spectrum Enterprise within 30 days of the calendar month in which the SLA Target was missed. Spectrum Enterprise will exercise commercially reasonable efforts to respond to such Service Credit requests within thirty (30) days of receipt thereof.

Service Availability	Mean Time to Repair (MTTR)	Latency/Frame Delay (Roundtrip)	Jitter/Frame Delay Variation	Packet Loss/Frame Loss
30%	>4 hours ≤ 7:59:59 Hours	4%	5%	5%
	> 8 hours	10%		

All SLA Targets are monthly measurements, and Customer may request only one credit per SLA Target per month for the Affected Service. Should one event impact more than one SLA hereunder, Customer shall receive the single highest of the qualifying credits only. Except as set forth below, the credits described in this SLA shall constitute Customer's sole and exclusive remedy, and Spectrum Enterprise's sole and exclusive liability, with respect to any missed SLA Targets. Service Credits hereunder shall not be cumulative per Service.

Chronic Priority 1 Outages:

If Customer experiences and reports three (3) separate Priority 1 Outages where the Downtime exceeds four (4) hours during each Priority 1 Outage within three (3) consecutive calendar months, then Customer may terminate the Affected Service without charge or liability by providing at least thirty (30) days written notice to Spectrum Enterprise; provided, however, that (i) Customer may only terminate the Affected Service; (ii) Customer must exercise its right to terminate the Affected Service by providing written notice to Spectrum Enterprise within thirty (30) days after the event giving rise to Customer's termination right; (iii) Customer shall have paid Spectrum Enterprise all amounts due at the time of such termination for all Services provided by Spectrum Enterprise pursuant to the Agreement, and (iv) the foregoing termination right provides the sole and exclusive remedy of Customer and the sole and exclusive liability of Spectrum Enterprise for chronic Priority 1 Outages and Customer shall not be eligible for any additional

credits. Termination will be effective forty-five (45) days after Spectrum Enterprise's receipt of such written notice of termination.



SPECTRUM ENTERPRISE SERVICE AGREEMENT

The customer identified below (“Customer”) hereby acknowledges and agrees to the Commercial Terms of Service attached hereto (“Terms of Service”) with respect to any service order(s) placed by Customer and accepted by Spectrum hereafter (each, a “Service Order”), which together with this agreement constitute the “Service Agreement” by and between the Customer and Charter Communications Operating, LLC on behalf of those operating subsidiaries providing the services hereunder (“Spectrum”).

Spectrum Sales Support Contact Information	
Spectrum Account Executive:	
Office:	Mobile:
Email:	

Customer Information				
Customer Name (Exact Legal Name):				
Street Address:	Suite:	City:	State:	Zip:
Customer’s Main Tel. No.:		Fax. No.:		
Customer Contact Name:	E-mail:		Tel No:	
Billing Address:	Suite:	City:	State:	Zip:
Billing Contact Name:	E-mail:		Tel No:	

Agreement

BY EXECUTING THIS SERVICE AGREEMENT BELOW, CUSTOMER ACKNOWLEDGES THAT: (1) CUSTOMER ACCEPTS AND AGREES TO BE BOUND BY THE TERMS OF SERVICE, INCLUDING THE ARBITRATION SECTION THEREOF, WHICH PROVIDES THAT THE PARTIES DESIRE TO RESOLVE ANY CONTROVERSY OR CLAIM ARISING OUT OF OR RELATING TO THE SERVICE AGREEMENT THROUGH ARBITRATION; AND (2) BY AGREEING TO ARBITRATION, CUSTOMER IS GIVING UP VARIOUS RIGHTS, INCLUDING THE RIGHT TO TRIAL BY JURY AND TO BRING CLAIMS AS CLASS ACTIONS.

Authorized Signature for Customer	Charter Communications Operating, LLC By: Charter Communications, Inc., its Manager
By:	By:
Name:	Name:
Title:	Title:
Date:	Date:

COMMERCIAL TERMS OF SERVICE

These Terms of Service include all Attachments hereto ("Attachment(s)"), and all other documents identified hereunder, each of which are incorporated herein by reference. The Attachments further describe Spectrum's services (each a "Service" or collectively the "Services") and set forth additional terms and conditions for the applicable Service. Spectrum and Customer may each be referred to as a "Party" or collectively as the "Parties." Unless specifically set forth in any Attachment, capitalized terms shall have the meanings set forth in this Service Agreement.

GENERAL

1. SERVICE AGREEMENT TERM. The Service Agreement shall be effective upon the earlier to occur of (a) the latest date of the signatures of the Parties; or (b) Spectrum's commencement of performance (the "Effective Date"). The Service Agreement shall remain in effect until the expiration or proper termination of the final existing Service Order entered into under this Service Agreement (the "Term").

2. SERVICES. Customer shall request Services hereunder by submitting orders in a manner required by Spectrum. All submitted Service Orders are subject to approval and acceptance by Spectrum. Upon Spectrum's acceptance of a Service Order, as indicated either by: (a) Spectrum's written acceptance, (b) by Spectrum's delivery of the Services, or (c) commencement of installation, such Service Order shall be deemed incorporated into the Service Agreement. Spectrum shall provide the Services to Customer at the Service address(es) specified in the applicable Service Order ("Service Location(s)").

3. ORDER TERM. The "Initial Order Term" is the time period starting on the date the Services are functional in all material respects and available for use (the "Billing Start Date"), and continuing for the period of time specified in the Service Order(s). If no Initial Order Term is specified in a Service Order, the Initial Order Term is twelve (12) months from the Billing Start Date. Upon expiration of the Initial Order Term, the applicable Service Order shall automatically renew for successive one-month terms (each a "Renewal Order Term", collectively with the Initial Order Term, the "Order Term"), unless either Spectrum or Customer elects to not renew the Service Order by notice provided to the other at least thirty (30) days in advance of the expiration of the then-current Order Term.

4. AVAILABILITY OF FACILITIES. Customer understands that certain Services, or certain features, may not be available in all Spectrum service areas, may change from time to time and Spectrum may decline to provide any requested Services. Spectrum's ability to provide Services depends upon its ability to secure and retain, without unreasonable expense, suitable facilities, and rights to construct and maintain necessary facilities such as pole attachments and conduits to serve the Service Location. Spectrum may decline to accept or terminate a Service Order upon notice to Customer because of (a) the lack of transmission medium, transmission capacity or any other facilities or equipment, (b) the lack of available services from or interconnection with the services or facilities of other providers, or (c) any other cause beyond Spectrum's control.

5. SERVICE LOCATION ACCESS AND INSTALLATION.

(a) Access. Spectrum requires reasonable access to each Service Location at any time throughout the Term as necessary for Spectrum to provide the Services and to review, install, inspect, maintain, repair, or remove any Spectrum-provided cabling, modems, related splitters, routers or other equipment ("Spectrum Equipment") used to provide the Services. If Customer owns or controls the Service Location(s), Customer hereby grants Spectrum permission to enter the Service Location(s) in order for Spectrum to fulfill its obligations and exercise its rights under the Service Agreement. If a Service Location is not owned or controlled by Customer, Customer will obtain, with Spectrum's reasonable assistance, appropriate right of access. If such right of access for Spectrum is not obtained by either Party, then Spectrum may decline Customer's request for Services, or terminate or amend the affected Service Order with respect to the Service Location that Spectrum cannot access, without any liability to Customer.

(b) Installation Review. Spectrum may perform an installation review of each Service Location prior to installation of the Services to determine serviceability or the need to extend Spectrum's facilities, fiber optic cable, electronics, or other equipment (collectively, the "Network") to provide the Services at the Service Location. If during the installation review, Spectrum determines that additional work is required to enable Spectrum to deliver the Services to the Service Location, Spectrum will notify Customer of any additional Service Charges (as defined below) in excess of the amounts previously specified in a quote or Service Order. Upon request, Customer shall provide Spectrum with accurate site and/or physical network diagrams or maps of a Service Location, including electrical and other utility service maps, prior to the installation review.

(c) Site Preparation. Customer shall be responsible for necessary preparations at the Service Location(s) for delivery and installation of Spectrum Equipment and the installation and ongoing provision of Services, including the relocation of Customer's equipment, furniture, and furnishings as necessary to access the Spectrum Equipment or Services. In addition, Customer shall provide Spectrum with floor space, rack space, other space, and clean power as is reasonably necessary for the installation and operation of Spectrum Equipment at the Service Location(s). Customer shall not charge Spectrum, and shall ensure that Spectrum does not incur, any fees or expenses whatsoever in connection with Customer's provision of space, power, or access as described herein, or otherwise in connection with Customer's performance of its obligations pursuant to this section; and any such fees or expenses charged by any other end user accessing or using the Services ("End User") shall be borne solely by Customer. Any failure or refusal by Customer to be ready to receive Services does not release Customer from its obligation to pay Service Charges for any Service that is otherwise available for Customer's use.

(d) Installation. Spectrum will schedule one or more installation visits with Customer. At the Customer's request, Spectrum may perform installation or maintenance on weekends or times other than during normal business hours; provided, however, Customer may be assessed reasonable, additional Service Charges based on Spectrum's actual incurred labor, material or other costs for such non-routine installation or maintenance. Customer's authorized representative must be present during installation.

If Spectrum is unable to install the Service as a result of (i) Customer's (or any End User's) failure to deliver any required materials, support or information to Spectrum; (ii) Customer's (or any End User's) failure to provide access to a Service Location; or (iii) Spectrum not being able to obtain access to equipment at the Service Location as necessary for installation of the Service, then Customer shall pay Spectrum a Service Charge at Spectrum's then prevailing rates for any installation trip made by Spectrum and an additional Service Charge for each subsequent trip necessary to perform the Service installation. In addition, if Spectrum's installation of the Service is delayed as a result of Customer's actions or inactions as set forth above or if Customer is otherwise refusing or not ready to receive Services, then Spectrum will notify Customer that Spectrum is ready to finalize installation of the Services (the "Ready Notice") and may begin invoicing Service Charges as set forth in Section 7 upon the earlier of the Billing Start Date or sixty (60) days after the date of the Ready Notice.

If during the course of installation Spectrum determines additional work is necessary to enable Spectrum to deliver the Services to the Service Location, Spectrum will notify Customer of any additional Service Charges in excess of the amounts previously specified in a quote or Service Order. If Customer does not agree to pay such Service Charges by executing a revised Service Order within five (5) business days of receiving the same, Customer and Spectrum shall each have the right to terminate the applicable Service Order. Spectrum may act as Customer's agent for ordering access connection facilities provided by other providers or entitles when authorized by Customer to allow connection of a Service Location to the Network.

Customer shall perform interconnection of the Services and Spectrum Equipment with any Customer- provided or End User equipment (collectively, "Customer Equipment"), unless otherwise set forth in an Attachment or agreed in writing between the Parties, and shall conform its Customer Equipment and software, and ensure that each End User conforms its equipment and software, to the technical specifications for the Service provided by Spectrum.

Spectrum shall be responsible for reasonable restoration efforts necessary to address any displacement resulting from excavation and for those damages directly caused by Spectrum's faulty workmanship or installation of the Service, provided that the boring of holes or insertion of fasteners through the surface of walls for attachment of peripheral equipment will not be deemed damages but rather part of normal workmanship. If the installation and maintenance of Services at the Service Locations is or becomes, in Spectrum's sole opinion, hazardous or dangerous to Spectrum's employees or Network, the public, or property, including without limitation due to the presence of asbestos or other hazardous materials, Spectrum may refuse to install and maintain such Service or stop providing Services until such time as the condition is remedied or an alternative Service Location is designated that is not hazardous or dangerous. Customer shall bear any additional costs incurred by Spectrum arising from any such hazardous or dangerous conditions.

6. EQUIPMENT.

Equipment Responsibilities and Safeguards.

(a) Spectrum shall use commercially reasonable efforts to maintain and secure the Spectrum Equipment used by Spectrum to provide Services to Customer. Except as otherwise provided in this Service Agreement or any Service Order(s), Customer shall be responsible for the maintenance or repair of any cable, electronics, structures, equipment, or materials owned or provided by Customer. Customer shall not, and shall not cause any third party to, move, modify, disturb, alter, remove, relocate to another Service Location, install software not provided by Spectrum, or otherwise tamper with any portion of the Spectrum Equipment without the prior consent of Spectrum. Customer shall be responsible for loss or damage to the Spectrum Equipment while at Customer's or an End User's facilities. Customer shall also ensure that all Spectrum Equipment at Customer's and End Users' Service Location(s) remains free and clear of all liens and encumbrances.

(b) Customer Security Responsibilities. Customer shall be responsible for all access to and use of the Service, including whether or not Customer has knowledge of or authorizes such access or use. Customer shall be responsible for the implementation of reasonable security measures and procedures with respect to use of and access to the Service Location, Service, and Spectrum Equipment. Customer shall secure and maintain any and all Customer Equipment, including, but not limited to, Private Branch Exchanges (including other non-Spectrum switches, collectively, “PBXs”), where applicable, and any applications accessible through use of Customer Equipment, and shall be solely responsible for any conduct through and any charges incurred on Customer’s Service account, regardless of whether such activity or charges are authorized by Customer management or involve fraudulent activity until such time as Customer informs Spectrum of any fraudulent or unauthorized access. Without limiting Customer’s responsibilities, Spectrum has the right to implement reasonable measures to track, manage, and secure the connection between any Customer Equipment or applications used by Customer, End Users, or any third party who accesses the Customer Equipment and the Spectrum Network, including without limitation authentication or other security access procedures. Spectrum may suspend any affected Services if Spectrum discovers or becomes aware of any breach or compromise of the security of any Customer Equipment, Service, Service Location, Spectrum Equipment, or connection to the Spectrum Network.

(c) Equipment Return, Retrieval, Repair, and Replacement. Upon termination or expiration of this Service Agreement or Service Order(s) (“Termination”): Customer shall immediately cease all use of and promptly return, if applicable, to Spectrum any software or software services provided by Spectrum (“Software”). Additionally at the discretion and direction of Spectrum: (x) Customer shall return the Spectrum Equipment to Spectrum; (y) Customer shall allow Spectrum to retrieve the Spectrum Equipment, which Spectrum Equipment must be in the condition in which the Spectrum Equipment was originally received by Customer, subject to ordinary wear and tear; or (z) Spectrum may abandon in-place all or certain portions of the Spectrum Equipment at Customer’s location, in which event such Spectrum Equipment, or portions thereof, will be deemed to property of Customer, and lien free title to such Spectrum Equipment, or portions thereof, will immediately transfer to Customer.

Except with respect to any Spectrum Equipment, or portions thereof, abandoned in-place by Spectrum, the failure of Customer to return or allow Spectrum to retrieve the Spectrum Equipment within fifteen (15) days after Services are terminated may, at the discretion of Spectrum, result in a charge to Customer’s account equal to: (i) Spectrum’s then-applicable unreturned equipment charge, or the retail cost of replacement of the unreturned Spectrum Equipment; plus (ii) any and all costs and expenses associated with Spectrum’s unsuccessful attempts to retrieve the Spectrum Equipment. If any Spectrum Equipment that Spectrum has requested Customer return or allow Spectrum to retrieve is not returned or retrieved within fifteen (15) days after the Services are terminated, such Spectrum Equipment will thereafter be deemed the property of Customer, regardless of whether or not Spectrum elects to charge Customer’s account, with lien free title thereto passing immediately to Customer. If applicable, Customer shall pay for the repair or replacement of any damaged Spectrum Equipment, except such repairs or replacements as may be necessary due to normal and ordinary wear and tear or material or workmanship defects, together with any costs incurred by Spectrum in obtaining or attempting to regain possession of Spectrum Equipment. The foregoing Customer obligations will survive the termination of Service.

7. STANDARD PAYMENT TERMS. Customer shall pay recurring and non-recurring charges, taxes, and fees for the Services in the amount specified on the Service Order and other applicable charges as described in this Service Agreement (collectively, “Service Charges”).

(a) Charges. Spectrum invoices for monthly recurring charges specific to the Service(s) (“MRCs”), plus applicable taxes, fees, and surcharges, in advance on a monthly basis. Spectrum invoices for non-recurring, one-time charges (“OTCs”) for construction or installation charges after the Billing Start Date or as specified in the Service Order. All other charges, including usage-based charges (e.g., phone usage, pay-per view charges), will be invoiced monthly in arrears. Service Charges are payable within thirty (30) days after the date appearing on the invoice. If Spectrum fails to present a Service Charge in a timely manner, such failure shall not constitute a waiver of the charges for the Services to which it relates, and Customer shall be responsible for and pay such Service Charges when invoiced in accordance with these payment terms. Spectrum shall have the right to increase MRCs for each Service after the Initial Order Term for such Service upon thirty (30) days’ notice to Customer.

(b) Taxes, Surcharges, and Fees. Customer shall pay all applicable taxes, fees, or surcharges imposed on or in connection with the Services that are the subject of this Service Agreement, including but not limited to applicable federal, state, and local sales, use, excise, telecommunications, or other taxes, franchise fees, federal and state universal service fund fees, and other state or local governmental charges or regulatory fees, excluding income taxes measured on Spectrum’s net income. If a Customer wishes to claim tax-exempt status, then Customer must supply Spectrum with a copy of Customer’s tax exemption certificate or other documentation supporting Customer’s certification of its entitlement to such exempt status within fifteen (15) days of installation of applicable Services. If Customer supplies such documentation after that time, Spectrum will apply it to Customer’s account on a prospective basis, allowing Spectrum at least thirty (30) days for processing. To the extent such documentation is held invalid for any reason, Customer agrees to pay or reimburse Spectrum for any tax or fee not collected or liability incurred, including without limitation related interest and penalties arising from Spectrum’s reliance on such invalid certificate or documentation.

Customer hereby consents that Spectrum may disclose such written documentation, which may include a tax exemption form, to any governmental authority. Tax-exempt status shall not relieve Customer of its obligation to pay applicable franchise fees or other non-tax fees and surcharges since the application of such fees and surcharges may not be governed by the tax standing of Customer. Spectrum reserves the right, from time to time, to change the surcharges for Services under this Service Agreement to reflect incurred costs, charges, or obligations imposed on Spectrum to the extent permitted, required, or otherwise not prohibited under applicable law (e.g., universal service fund charges). Furthermore, Spectrum shall have the right to collect or recover from Customer the amount of any state or local fees or taxes arising as a result of this Service Agreement, which are imposed on Spectrum or its services, or otherwise assessed or calculated based on Spectrum's receipts from Customer that Spectrum is entitled under applicable law to pass through to or otherwise charge Customer for Customer's use or receipt of the Services. Such fees or taxes shall be invoiced to Customer in the form of a surcharge included on Customer's invoice.

To the extent that a dispute arises under this Service Agreement as to which Party is liable for fees or taxes, Customer shall bear the burden of proof in showing that the fee or tax is imposed upon Spectrum's net income. This burden may be satisfied by Customer producing written documentation from the jurisdiction imposing the fee or tax indicating that the fee or tax is based on Spectrum's net income. Customer acknowledges that currently, and from time to time, there is uncertainty about the taxability or regulatory classification of some of the Services Spectrum provides and, consequently, uncertainty about what fees, taxes and surcharges are due to or from Spectrum or from its customers. Customer agrees that Spectrum has the right to determine, in its sole discretion, what fees, taxes, and surcharges are due and to collect and remit them to the relevant governmental authorities, or to pay and pass them through to Customer. Customer hereby waives any claims it may have regarding Spectrum's collection or remittance of such fees, taxes, and surcharges.

(c) Change Requests. Any charges associated with Service and Spectrum Equipment or Customer Equipment installations, changes, or additions requested by Customer subsequent to executing a Service Order for the applicable Service Location are the sole financial responsibility of Customer. Spectrum shall notify Customer of any additional OTCs and/or adjustments to MRCs associated with or applicable to such Customer change requests prior to making any such change. Customer's failure to accept such additional charges within five (5) business days of receiving such notice shall be deemed a rejection by Customer, and Spectrum shall not be liable to perform any work giving rise to such charges. For accepted charges, Customer shall be assessed such additional OTCs and/or adjustments of the MRCs either (i) in advance of implementation of the change request or (ii) beginning on Customer's next and/or subsequent invoice(s).

(d) Site Visits and Repairs. If Spectrum visits a Service Location to either inspect the Services or respond to a service request, and Spectrum reasonably determines that the cause of the service issue is not due to a problem arising from Spectrum's Network or Spectrum Equipment, but rather is due to Customer misuse, abuse, or modification of the Services, Customer Equipment or facilities, or due to similar acts by a third party not under Spectrum's control or direction, then Spectrum may invoice Customer at Spectrum's then-prevailing commercial rates for an on-site visit, plus any charges for Spectrum Equipment repair or replacement as a result of Customer or third party damage that may be necessary.

(e) Invoicing Disputes; Late and Collection Fees. Customer must provide notice to Spectrum of any disputed charges within sixty (60) days of the invoice date on which the disputed charges appear for Customer to receive any credit that may be due. Customer must have and present a reasonable basis for disputing any amount charged. Undisputed amounts not paid within thirty (30) days of the invoice date shall be past due and subject to a late fee up to the lesser of 1.5% of the MRC per month or the maximum amount permitted by law. If Services are suspended due to late payment, Spectrum may require that Customer pay all past due charges, a reconnect fee, and one or more MRCs in advance before reconnecting Services. Spectrum may charge a reasonable service fee for all returned checks and bankcard, credit card or other charge card charge-backs. Customer shall be responsible for all expenses, including reasonable attorney fees and collection costs, incurred by Spectrum in collecting any unpaid amounts due under this Service Agreement.

(f) Credit Verification. Spectrum shall have the right to verify Customer's credit standing at any time.

(g) Bundled Pricing. If Customer has selected a bundled offer, meaning a discounted MRC for receiving more than one Spectrum Service ("Bundle"), then the following conditions shall apply:

- i. In consideration for Customer's purchase of all Services in the Bundle, and only with respect to that period of time during which Customer continues to purchase the specific Services in such Bundle and during which such Bundle is in effect, the correlating discount to the Services in such Bundle, ordered pursuant to the Spectrum program governing such Bundle, will be reflected in the MRC for the respective Services.
- ii. Upon Termination by Customer, for any reason other than a Spectrum Default, of any Service component of the applicable Bundle, the pricing for the remaining Service(s) shall revert to Spectrum's unbundled pricing for such Service(s) in effect at the time of Termination. Termination liability applicable to the Services under this Service Agreement shall otherwise remain unchanged.

8. ADMINISTRATIVE WEB SITE. Spectrum may, at its sole option, make one or more administrative web sites, including without limitation www.spectrum.net, available to Customer in connection with Customer's use of the Services (each an "Administrative Web Site"). Spectrum may furnish Customer with one or more user identifications and/or passwords for use on the Administrative Web Site and Customer must promptly change any Spectrum-provided user identifications and passwords to a secure, Customer-designated user identification and password. Customer shall be responsible for the confidentiality and use of such user identifications and passwords, whether provided by Spectrum or designated by Customer, and any equipment or devices used to access any Administrative Web Site, and shall immediately notify Spectrum if there has been an unauthorized release, use, or other compromise of any user identification or password. In addition, Customer agrees that its authorized users shall keep confidential and not distribute any information or other materials made available by the Administrative Web Site. Customer shall be solely responsible for all use of the Administrative Web Site. Spectrum shall not be liable for any loss, cost, expense, or other liability arising out of any Customer use of the Administrative Web Site.

Spectrum may change or discontinue the Administrative Web Site, or Customer's right to use the Administrative Web Site, at any time. Any additional terms and policies applicable to Customer's use of the Administrative Web Site will be posted on the site.

9. SUPPORT. Spectrum shall provide contact information for inquiries and remote problem support for the Services. All such Customer support shall be provided only to Customer's designated personnel or as mutually agreed upon by Spectrum and Customer. Customer is responsible for all communications and support for its End Users. Customer shall provide routine operational support for Spectrum Equipment located at a Service Location, including without limitation, by performing reboots as requested by Spectrum. Customer is responsible for the installation, repair, and use of Customer Equipment, including without limitation, Customer-supplied third-party hardware, or software for the use of Spectrum Service or third party services.

Spectrum does not support third-party hardware or software used in conjunction with third-party services or supplied by Customer. Any questions concerning third-party hardware or software should be directed to the provider of that product. Spectrum assumes no liability or responsibility for the installation, maintenance, compatibility or performance of third-party software, or any Customer Equipment or Customer-supplied software with the Services. If such third-party equipment or software impairs the Services, Customer shall continue to pay all applicable Service Charges. If, at Customer's request, Spectrum should attempt to resolve difficulties caused by such third-party equipment or software, such efforts shall be performed at Spectrum's discretion and subject to Service Charges as set forth in Section 7(d).

10. CUSTOMER REPRESENTATIONS AND OBLIGATIONS

(a) Representations. Customer represents and warrants to Spectrum that: (i) Customer has the authority to execute, deliver and carry out the terms of this Service Agreement, and (ii) its End Users and any person who accesses any Services at the Service Location, will use the Service and Network for Customer's internal business purposes and will comply with the terms of this Service Agreement.

(b) No Reselling. Customer shall not re-sell or re-distribute (whether for a fee or otherwise) access to the Service(s) or system capacity, or any part thereof, in any manner other than for Customer's internal business without the express prior consent of Spectrum, including without limitation, any use to provide services for the benefit of, or on behalf of, any third party other than Customer or its End Users.

(c) No Illegal Purpose or Unauthorized Access. Customer shall not use or permit End Users or third parties to use the Service(s), including the Spectrum Equipment and Software, for any illegal purpose, or to achieve unauthorized access to any computer systems, software, data, or other copyright or patent protected material.

(d) No Interference. Customer shall not interfere with or cause technical difficulties for other customers' use of equipment or Services or interfere with or disrupt the Spectrum Network, backbone, nodes or any other Services, facilities or third-party providers. Customer shall not install any equipment, including without limitation, any antenna or signal amplification system, at the Service Location that interferes with the Services.

(e) Applicable Laws. With respect to Customer's and End Users' use of the Service (including the transmission or use of any content via the Service), Customer shall comply, and shall ensure that its End Users comply, with all applicable laws and regulations in addition to the terms of this Service Agreement. Spectrum shall have the right to audit Customer's use of the Service remotely or otherwise, to ensure compliance with this Service Agreement.

(f) Acceptable Use. As between the Parties, Customer is solely responsible for (i) all use (whether or not authorized) of the Service by Customer, any End User or any unauthorized person or entity, which use shall be deemed Customer's use for purposes of this Service Agreement, (ii) all content that is viewed, stored or transmitted via the Service, as applicable, and (iii) all third-party charges incurred for merchandise and services accessed via the Service, if any. Customer shall not use, or allow the Services to be used, in any manner that would violate the applicable Spectrum Acceptable Use Policies or that would cause, or be likely to cause, Spectrum to qualify as a "Covered 911 Service Provider" as defined in 47 C.F.R. §9.19 or any successor provision of the rules of the Federal Communication Commission.

For avoidance of doubt, Customer and Spectrum agree that any failure to satisfy the covenants set forth in the preceding sentence shall constitute a material breach of the Service Agreement.

11. PERFORMANCE. Unless otherwise set forth in an Attachment or service level agreement, Spectrum will use commercially reasonable efforts to provide the Services to Customer twenty-four (24) hours per day, seven (7) days per week. It is possible, however, that there will be interruptions of Service. The Service may be unavailable from time-to-time either for scheduled or unscheduled maintenance, technical difficulties, or for other reasons beyond Spectrum's reasonable control. Temporary service interruptions or outages for such reasons, as well as service interruptions or outages caused by Customer, its agents and employees, or by a Force Majeure Event, shall not constitute a failure by Spectrum to perform its obligations under this Service Agreement.

12. MONITORING, EQUIPMENT UPGRADES AND NETWORK MODIFICATIONS. Spectrum has the right, but not the obligation, to upgrade, modify, and enhance the Spectrum Network and the Service and take any action that Spectrum deems appropriate to protect or improve the Service and its facilities. Spectrum shall have the right, but not the obligation, to monitor, record, and maintain oral communications with Customer regarding Customer's account or Services for the purpose of service quality assurance, or as permitted under applicable law.

13. DEFAULT, SUSPENSION OF SERVICE, AND TERMINATION.

(a) Default. A Party shall be in default under this Service Agreement if it has failed to comply with the terms of this Service Agreement or any of all of the applicable Service Orders, including without limitation the obligation to pay any amounts due, and such Party fails to correct each such noncompliance within thirty (30) days of receipt of notice from the non-defaulting Party describing in reasonable detail the default or noncompliance ("Default").

(b) Mutual Termination Rights. Either Party may terminate this Service Agreement or a Service Order if: (i) the other Party is in Default; or (ii) the other Party liquidates, is adjudicated as bankrupt, makes an assignment for the benefit of creditors, invokes any provision of law for general relief from its debts, initiates any proceeding seeking general protection from its creditors, or is removed or delisted from a trading exchange.

(c) Termination for Convenience by Customer. Notwithstanding any other term or provision in this Service Agreement, Customer may terminate a Service Order, or this Service Agreement, at any time upon thirty (30) days prior notice to Spectrum, subject to payment of all outstanding amounts due, payment of any applicable Termination Charges (as defined below), and the return of any Spectrum Equipment.

(d) Spectrum's Right to Suspend. Spectrum shall have the right, at its option, without prior notice, and in addition to any other rights of Spectrum expressly set forth in this Service Agreement and any other remedies it may have under applicable law to suspend Services if Customer fails to comply with any applicable laws or regulations or this Service Agreement, or if Customer or its End Users' use of the Service is determined by Spectrum, in its sole discretion, to result in a material degradation of the Spectrum Network until Customer remedies any such noncompliance or degradation. Any suspension shall not affect Customer's on-going obligation to pay Spectrum any amounts due under this Service Agreement. If Spectrum suspends any Service, Spectrum may require the payment of reconnect or other charges before restarting the suspended Service.

(e) Termination Charges. Upon Termination, Customer must pay all Services Charges then due for Services provided through the effective date of Termination. In addition, if Termination is due to Customer Default or for Customer's convenience, Customer must pay Spectrum a termination charge (a "Termination Charge"), which the Parties recognize as liquidated damages and not as a penalty. This Termination Charge shall be equal to 100% of the unpaid balance of all Service Charges that would have been due throughout the applicable Order Term, including, without limitation, the outstanding balance of any and all unpaid OTCs. The foregoing terms will also apply to any partial Termination impacting one or more Service Orders, but not the entire Service Agreement.

(f) Survival. The provisions of sections 6(c), 7(b), 7(e), 13(e), 13(f), 14, 15, 18-22 and the Attachments shall survive the termination or expiration of the Service Agreement.

14. DISCLAIMER OF WARRANTY; LIMITATION OF LIABILITY.

(a) **DISCLAIMER OF WARRANTY.** CUSTOMER ASSUMES TOTAL RESPONSIBILITY FOR USE OF THE SERVICE AND SPECTRUM EQUIPMENT, AND USES THE SAME AT ITS OWN RISK, AND FOR ACCESS TO AND SECURITY OF CUSTOMER'S EQUIPMENT AND CUSTOMER'S NETWORK. SPECTRUM EXERCISES NO CONTROL OVER AND HAS NO RESPONSIBILITY WHATSOEVER FOR THE APPLICATIONS OR CONTENT TRANSMITTED OR ACCESSIBLE THROUGH THE SERVICE AND SPECTRUM EXPRESSLY DISCLAIMS ANY RESPONSIBILITY FOR SUCH APPLICATIONS OR CONTENT.

EXCEPT AS SPECIFICALLY SET FORTH IN THIS SERVICE AGREEMENT, THE SERVICE, SPECTRUM EQUIPMENT, AND ANY SPECTRUM MATERIALS ARE PROVIDED "AS IS, WITH ALL FAULTS," WITHOUT WARRANTIES OF ANY KIND, EITHER EXPRESS OR IMPLIED, INCLUDING BUT NOT LIMITED TO WARRANTIES OF TITLE, NON-INFRINGEMENT, SYSTEM INTEGRATION, DATA ACCURACY, QUIET ENJOYMENT, MERCHANTABILITY, OR FITNESS FOR A PARTICULAR PURPOSE. NO ADVICE OR INFORMATION GIVEN BY SPECTRUM, ITS AFFILIATES OR ITS CONTRACTORS OR THEIR RESPECTIVE EMPLOYEES SHALL CREATE ANY WARRANTY. SPECTRUM DOES NOT REPRESENT OR WARRANT THAT THE SERVICE WILL MEET CUSTOMER'S REQUIREMENTS, PREVENT UNAUTHORIZED ACCESS BY THIRD PARTIES, WILL BE UNINTERRUPTED, SECURE, ERROR FREE, WITHOUT DEGRADATION OF VOICE QUALITY OR WITHOUT LOSS OF CONTENT, DATA OR INFORMATION, OR THAT ANY MINIMUM TRANSMISSION SPEED IS GUARANTEED AT ANY TIME. EXCEPT AS SET FORTH IN THE SERVICE AGREEMENT, SPECTRUM DOES NOT WARRANT THAT ANY SERVICE OR EQUIPMENT PROVIDED BY SPECTRUM WILL PERFORM AT A PARTICULAR SPEED, BANDWIDTH, OR THROUGHPUT RATE. IN ADDITION, CUSTOMER ACKNOWLEDGES AND AGREES THAT TRANSMISSIONS OVER THE SERVICE MAY NOT BE SECURE.

CUSTOMER FURTHER ACKNOWLEDGES AND AGREES THAT ANY DATA, MATERIAL OR TRAFFIC OF ANY KIND WHATSOEVER CARRIED, UPLOADED, DOWNLOADED OR OTHERWISE OBTAINED THROUGH THE USE OF THE SERVICE IS DONE AT CUSTOMER'S OWN DISCRETION AND RISK AND THAT CUSTOMER WILL BE SOLELY RESPONSIBLE FOR ANY DAMAGE TO CUSTOMER'S OR ANY END USER'S EQUIPMENT OR LOSS OF SUCH DATA, MATERIAL OR TRAFFIC DURING, OR RESULTING FROM, CUSTOMER'S OR ANY END USER'S USE OF THE SERVICE, INCLUDING, WITHOUT LIMITATION, VIA SENDING OR RECEIVING, UPLOADING OR DOWNLOADING, OR OTHER TRANSMISSION OF SUCH DATA, MATERIAL OR TRAFFIC. IN ADDITION, CUSTOMER ACKNOWLEDGES AND AGREES THAT SPECTRUM'S THIRD PARTY SERVICE PROVIDERS DO NOT MAKE ANY WARRANTIES TO CUSTOMER UNDER THIS SERVICE AGREEMENT, AND SPECTRUM DOES NOT MAKE ANY WARRANTIES ON BEHALF OF SUCH SERVICE PROVIDERS UNDER THIS SERVICE AGREEMENT, EXPRESS OR IMPLIED, INCLUDING, BUT NOT LIMITED TO THE IMPLIED WARRANTIES OF MERCHANTABILITY, NON-INFRINGEMENT, TITLE, FITNESS FOR A PARTICULAR PURPOSE, SYSTEM INTEGRATION, DATA ACCURACY OR QUIET ENJOYMENT.

(b) LIMITATION OF LIABILITY. WITHOUT LIMITING ANY EXPRESS PROVISIONS OF THIS SERVICE AGREEMENT, NEITHER PARTY SHALL BE LIABLE TO THE OTHER, ANY END USER, OR ANY THIRD PARTY FOR ANY INDIRECT, CONSEQUENTIAL, EXEMPLARY, SPECIAL, INCIDENTAL, RELIANCE, OR PUNITIVE DAMAGES (INCLUDING LOST BUSINESS, REVENUE, PROFITS, OR GOODWILL) ARISING IN CONNECTION WITH THIS SERVICE AGREEMENT OR THE PROVISION OF SERVICES, INCLUDING ANY SERVICE IMPLEMENTATION DELAYS OR FAILURES, UNDER ANY THEORY OF TORT, CONTRACT, WARRANTY, STRICT LIABILITY, MISREPRESENTATION, OR NEGLIGENCE, EVEN IF THE PARTY HAS BEEN ADVISED, KNEW OR SHOULD HAVE KNOWN OF THE POSSIBILITY OF SUCH DAMAGES. THE FOREGOING LIMITATION OF LIABILITY SHALL NOT APPLY TO ANY OF CUSTOMER'S PAYMENT OBLIGATIONS UNDER THIS SERVICE AGREEMENT. SPECTRUM'S MAXIMUM LIABILITY TO CUSTOMER WITH REGARD TO ANY SERVICE ORDER SHALL NOT EXCEED THE AMOUNT, EXCLUDING OTCS, PAID OR PAYABLE BY CUSTOMER TO SPECTRUM FOR THE APPLICABLE SERVICE ORDER IN THE THREE (3) MONTHS IMMEDIATELY PRECEDING THE EVENTS GIVING RISE TO THE CLAIM. SPECTRUM SHALL NOT BE RESPONSIBLE FOR ANY LOSSES OR DAMAGES ARISING AS A RESULT OF THE UNAVAILABILITY OF THE SERVICE, INCLUDING THE INABILITY TO REACH 911 OR ANY OTHER EMERGENCY SERVICES, THE INABILITY TO CONTACT A SECURITY SYSTEM OR REMOTE MEDICAL OR OTHER MONITORING SERVICE PROVIDER OR ANY FAILURE OR FAULT RELATING TO CUSTOMER-PROVIDED EQUIPMENT, FACILITIES, OR SERVICES.

15. INDEMNIFICATION. Unless prohibited under applicable law, Customer at its own expense, shall indemnify, defend, and hold harmless Spectrum, its affiliates, service providers, and suppliers, and their directors, employees, representatives, officers and agents (the "Indemnified Parties") against any and all third party claims, liabilities, lawsuits, damages, losses, judgments, costs, fees and expenses incurred by Indemnified Parties, including reasonable attorney and other professional fees and court costs incurred by Indemnified Parties, to the full extent that such arise from or relate to any one or more of the following:

- (a)** Customer's use or misuse of the Service,
- (b)** Customer's failure to comply with any applicable law, order, rule, regulation or ordinance or this Service Agreement,
- (c)** Personal injury or tangible property damage caused by Customer's or its employees' or agents' negligence or willful misconduct.

Indemnified Parties shall have the right but not the obligation to participate in the defense of the claim.

16. COMPLIANCE WITH LAWS. As between the Parties, Spectrum shall obtain and maintain at its own expense all licenses, approvals and regulatory authority required by law with respect to Spectrum's operation and provision of the Services as contemplated in the Service Agreement, and Customer shall obtain and maintain at its own expense all licenses, approvals and regulatory authority required by law with respect to Customer's use of the Services as contemplated in the Service Agreement.

Unless specified otherwise in the Service Agreement, each Party shall give all notices, pay all fees and comply with all applicable laws, ordinances, rules and regulations relating to its performance obligations specified in the Service Agreement. The Service Agreement is subject to all applicable federal, state, or local laws and regulations in effect in the relevant jurisdiction(s) in which Spectrum provides the Services. If any provision of the Service Agreement contravenes or is in conflict with any such law or regulation, then the terms of such law or regulation shall take priority over the relevant provision of the Service Agreement. If the relevant law or regulation applies to some but not all of the Services being provided under the Service Agreement, then such law or regulation shall take priority over the relevant provision of the Service Agreement only for purposes of those Services to which the law or regulation applies. Except as explicitly stated in the Service Agreement, nothing contained in the Service Agreement shall constitute a waiver by Spectrum of any rights under applicable laws or regulations pertaining to the installation, construction, operation, maintenance, or removal of the Services, facilities or equipment.

17. REGULATORY CHANGES. In the event of any change in applicable law, regulation, decision, rule or order, including without limitation any new application of or increase in any government- or quasi-government-imposed fees or charges that increases the costs or other terms of Spectrum's delivery of Service to Customer, or, in the event of any increase in pole attachment or conduit charges applicable to any facilities used by Spectrum in providing the Service, Customer acknowledges and agrees that Spectrum may pass through to Customer any such increased fees or costs, but only to the extent of the actual increase. Spectrum shall use commercially reasonable efforts to notify Customer at least thirty (30) days in advance of the increase. In such case, and if such increase materially increases the Service Charges payable by Customer under the Service Agreement for the applicable Service, Customer may, within thirty (30) days after notification of such increase, terminate the affected Service without an obligation to pay Termination Charges, provided Customer notifies Spectrum at least thirty (30) days in advance of Customer's requested termination date. Further, in the event that Spectrum is required to file tariffs, rate schedules, or price guides with a regulatory agency or otherwise publish or make generally available its rates in accordance with regulatory agency rules or policies respecting the delivery of the Service or any portion thereof, then the terms set forth in the applicable tariff, rate schedule, or price guide shall govern Spectrum's delivery of, and Customer's use or consumption of the Service. In addition, if Spectrum determines that offering or providing the Service, or any part thereof, has become impracticable for legal or regulatory reasons or circumstances, then Spectrum may terminate the Service Agreement and any affected Service Orders without liability, by giving Customer thirty (30) days prior notice or any such notice as is required by law or regulation applicable to such determination.

18. ARBITRATION. This Service Agreement requires the use of arbitration to resolve disputes and otherwise limits the remedies available to Customer in the event of a dispute. Subject to the "Exclusions" paragraph below, Spectrum and Customer agree to arbitrate disputes and claims arising out of or relating to this Service Agreement, the Services, the Spectrum Equipment, Network, or marketing of the Services. Notwithstanding the foregoing, either Party may bring an individual action on any matter or subject in small claims court. The arbitrator of any dispute or claim brought under or in connection with this Service Agreement shall not have the power to award injunctive relief, which may only be sought in an appropriate court of law. No claim subject to arbitration under this Service Agreement may be combined with a claim subject to resolution before a court of law. THIS SERVICE AGREEMENT MEMORIALIZES A TRANSACTION IN INTERSTATE COMMERCE. THE FEDERAL ARBITRATION ACT GOVERNS THE INTERPRETATION AND ENFORCEMENT OF THESE ARBITRATION PROVISIONS.

(a) A Party who intends to seek arbitration must first send to the other a written notice of intent to arbitrate, entitled "Notice of Intent to Arbitrate" ("**Notice**"). The Notice to Spectrum should be addressed to: VP and Associate General Counsel, Litigation, Charter Communications, 12405 Powerscourt Drive, St. Louis, MO 63131 ("**Arbitration Notice Address**"). The Notice must: (a) describe the nature and basis of the claim or dispute; and (b) set forth the specific relief sought. If the Parties do not reach an agreement to resolve the claim within thirty (30) days after the Notice is received, Customer or Spectrum may commence an arbitration proceeding, in which all issues are for the arbitrator to decide (including the scope of the arbitration clause), but the arbitrator shall be bound by the terms of this Service Agreement. The arbitration shall be governed by the Commercial Arbitration Rules and the Supplementary Procedures for Consumer Related Disputes (collectively, "**AAA Rules**") of the American Arbitration Association ("**AAA**"), as modified by this Service Agreement, and the arbitration shall be administered by the AAA. The AAA Rules and fee information are available at www.adr.org, by calling the AAA at 1-800-778-7879, or by writing to the Arbitration Notice Address.

(b) EACH PARTY SHALL BEAR THE COST OF ANY ARBITRATION FILING FEES AND ARBITRATOR'S FEES THAT SUCH PARTY INCURS INCLUDING, BUT NOT LIMITED TO, ATTORNEYS FEES OR EXPERT WITNESS COSTS UNLESS OTHERWISE REQUIRED UNDER APPLICABLE LAW. If the arbitrator's award exceeds \$75,000, either Party may appeal such award to a three-arbitrator panel administered by the AAA and selected according to the AAA Rules, by filing a written notice of appeal within thirty (30) days after the date of entry of the arbitration award. The appealing Party must provide the other Party with a copy of such appeal concurrently with its submission of the appeals notice to AAA. The three-arbitrator panel must issue its decision within one hundred twenty (120) days of the date of the appealing Party's notice of appeal.

The decision of the three-arbitrator panel shall be final and binding, except for any appellate right which may exist under the Federal Arbitration Act. The Parties may agree that arbitration will be conducted solely on the basis of the documents submitted to the arbitrator, via a telephonic hearing, or by an in-person hearing as established by AAA rules. Unless Spectrum and Customer agree otherwise in writing, all hearings conducted as part of the arbitration shall take place in the Borough of Manhattan, City of New York.

(c) CUSTOMER AGREES THAT, BY ENTERING INTO THIS SERVICE AGREEMENT, CUSTOMER AND SPECTRUM ARE WAIVING THE RIGHT TO A TRIAL BY JUDGE OR JURY. CUSTOMER AND SPECTRUM AGREE THAT CLAIMS MAY ONLY BE BROUGHT IN CUSTOMER'S INDIVIDUAL CAPACITY AND NOT ON BEHALF OF, OR AS PART OF, A CLASS ACTION OR REPRESENTATIVE PROCEEDING. Furthermore, unless both Customer and Spectrum agree otherwise in writing, the arbitrator may not consolidate proceedings or more than one person's claims and may not otherwise preside over any form of representative or class proceeding. If this specific paragraph is found to be unenforceable, then the entirety of these arbitration provisions shall be null and void and rendered of no further effect with respect to the specific claim at issue.

(d) Severability. If any clause within these arbitration provisions is found to be illegal or unenforceable, that specific clause will be severed from these arbitration provisions, and the remainder of the arbitration provisions will be given full force and effect. NOTWITHSTANDING ANYTHING TO THE CONTRARY, IN THE EVENT SOME OR ALL OF THESE ARBITRATION PROVISIONS IS DETERMINED TO BE UNENFORCEABLE FOR ANY REASON, OR IF A CLAIM IS BROUGHT THAT IS FOUND BY A COURT TO BE EXCLUDED FROM THE SCOPE OF THESE ARBITRATION PROVISIONS, BOTH PARTIES AGREE TO WAIVE, TO THE FULLEST EXTENT ALLOWED BY LAW, ANY TRIAL BY JURY. For purposes of the foregoing sentence only, in the event such waiver is found to be unenforceable, it shall be severed from this Service Agreement, rendered null and void and of no further effect without affecting the rest of the arbitration provisions set forth herein.

(e) EXCLUSIONS. CUSTOMER AND SPECTRUM AGREE THAT THE FOLLOWING CLAIMS OR DISPUTES SHALL NOT BE SUBJECT TO ARBITRATION:

- i. ANY INDIVIDUAL ACTION BROUGHT BY CUSTOMER OR BY SPECTRUM ON ANY MATTER OR SUBJECT THAT IS WITHIN THE JURISDICTION OF A COURT THAT IS LIMITED TO ADJUDICATING SMALL CLAIMS.
- ii. ANY DISPUTE OVER THE VALIDITY OF ANY PARTY'S INTELLECTUAL PROPERTY RIGHTS.
- iii. ANY DISPUTE RELATED TO OR ARISING FROM ALLEGATIONS ASSOCIATED WITH UNAUTHORIZED USE OR RECEIPT OF SERVICE.

19. PROPRIETARY RIGHTS AND CONFIDENTIALITY.

(a) Spectrum's Proprietary Rights. All materials including, but not limited to, any Spectrum Equipment (including related firmware), software, data and information provided by Spectrum, any identifiers or passwords used to access the Service or otherwise provided by Spectrum, and any know-how, methodologies or processes including, but not limited to, all copyrights, trademarks, patents, trade secrets, any other proprietary rights inherent therein and appurtenant thereto, used by Spectrum to provide the Service (collectively "Spectrum Materials") shall remain the sole and exclusive property of Spectrum or its suppliers and shall not become a fixture to the Service Location. Customer shall acquire no title to, interest or right (including intellectual property rights) in the Spectrum Materials by virtue of the payments provided for herein other than the limited, non-exclusive, and non-transferable license to use the Spectrum Materials solely for Customer's use of the Service. Customer may not disassemble, decompile, reverse engineer, reproduce, modify, or distribute the Spectrum Materials, in whole or in part, or use them for the benefit of any third party. Customer shall not cause or permit the disabling or circumvention of any security mechanism contained in or associated with the Services. All rights in the Spectrum Materials not expressly granted to Customer herein are reserved to Spectrum or its suppliers. Customer shall not open, alter, misuse, tamper with, or remove the Spectrum Equipment or Spectrum Materials as and where installed by Spectrum, and shall not remove any markings or labels from the Spectrum Equipment or Spectrum Materials indicating Spectrum (or its suppliers) ownership or serial numbers.

(b) Confidentiality. Customer agrees to maintain in confidence, and not to disclose to third parties or use, except for such use as is expressly permitted herein, the Spectrum Materials and any other information and materials provided by Spectrum in connection with this Service Agreement, including but not limited to the contents of this Service Agreement and any Service Orders. Customer may not issue a press release, public announcement or other public statements regarding the Service Agreement without Spectrum's prior consent.

(c) Software. If Software is provided to Customer hereunder, Spectrum grants Customer a limited, non-exclusive, and non-transferable license to use such Software, in object code form only, for the sole and limited purpose of using the Services for Customer's internal business purposes during the Term. Customer shall not copy, reverse engineer, decompile, disassemble, translate, or attempt to learn the source code of any Software. Upon termination of a Service Order, the license to use any Software provided by Spectrum to Customer in connection with the Services provided under the Service Order shall terminate and Customer shall destroy any copies of the Software provided to Customer.

20. PRIVACY. Spectrum also maintains a Privacy Policy with respect to the Services in order to protect the privacy of its customers. The Privacy Policy may be found on Spectrum's website at <https://enterprise.spectrum.com/>. The Privacy Policy may be updated or modified from time-to-time by Spectrum, with or without notice to Customer. Customer's privacy interests, including Customer's ability to limit disclosure of certain information to third parties, may be addressed by, among other laws, the Federal Telecommunications Act, the Federal Cable Communications Act, the Electronic Communications Privacy Act, and, to the extent applicable, state laws and regulations. Customer proprietary network information and personally identifiable information that may be collected, used or disclosed in accordance with applicable laws is described in an Attachment, the Privacy Policy, and, if applicable, in Spectrum's tariff, which are incorporated into, and made a part of, this Service Agreement by this reference. In addition to the foregoing, Customer hereby acknowledges and agrees that Spectrum may disclose Customer's and its employees' personally identifiable information as required by law or regulation, or the American Registry for Internet Numbers or any similar agency, or in accordance with the Privacy Policy or, if applicable, tariff(s). In addition, Spectrum shall have the right (except where prohibited by law), but not the obligation, to disclose any information to protect its rights, property or operations, or where circumstances suggest that individual or public safety is in peril.

21. NOTICES.

(a) Except for notice to terminate the Service Agreement or to disconnect any Services as set forth in Section 21(b) below, all other notices to be given under this Service Agreement shall be validly given or served only if in writing and sent by nationally recognized overnight delivery service or certified mail, return receipt requested, to the following addresses

If to Spectrum:

Charter Communications Operating, LLC
ATTN: Commercial Contracts Management
Corporate - Legal Operations
12405 Powerscourt Drive
St. Louis, MO 63131

Notices to Customer shall be sent to the Customer billing address or as set forth in the Service Agreement. Each Party may change its respective address(es) for legal notice by providing notice to the other Party. Upon Spectrum's request, Customer will also provide Spectrum with a current email address that Customer regularly checks so that Spectrum may provide copies of notices and other communications to Customer by email.

1. Disconnect Notice. Customer may disconnect a Service or all Services under the Services Agreement by following the instructions available at this link: <https://enterprise.spectrum.com/support/faq/account/how-to-cancel-service.html> (such instructions in the link may be updated from time to time).

22. MISCELLANEOUS.

(a) Entire Agreement. This Service Agreement, including without limitation all Attachments, incorporated documents and any executed Service Orders constitute the entire agreement and understanding between the Parties with respect to the subject matter hereof. This Service Agreement supersedes all prior understandings, promises, and undertakings, if any, made orally or in writing by or on behalf of the Parties with respect to the subject matter of this Service Agreement, including without limitation any prior confidentiality or non-disclosure agreement between the Parties regarding the purchase and sale of Spectrum Services. Customer should also consult Spectrum's website <https://enterprise.spectrum.com/> to be sure Customer is aware of Spectrum's Acceptable Use Policies, Network Management Practices, applicable tariffs and price guides, and other policies or practices that are applicable to Customer's use of the Services (collectively "Policies"). Customer's use of the Services shall be deemed acknowledgment that Customer has read and agreed to Spectrum's Policies as a part of this Service Agreement.

(b) Signatures; Electronic Transactions. This Service Agreement may be executed in one or more counterparts, each of which is an original, but together constituting one and the same instrument. Execution of a facsimile or other electronic copy will have the same force and effect as execution of an original, and a facsimile or electronic signature will be deemed an original and valid signature. The Parties agree to conduct business using electronic means including using electronic records and electronic signatures, except as provided with respect to notices in Section 21.

(c) Order of Precedence. Each Service shall be provisioned pursuant to the terms and conditions of this Service Agreement. In the event that Spectrum permits Customer to use its own standard purchase order form to order the Service, the Parties hereby acknowledge and agree that the terms and conditions hereof shall prevail notwithstanding any variance with the terms and conditions of any purchase order submitted by Customer, and any different or additional terms contained in such purchase order shall have no force or effect. To the extent that the terms of the Service Agreement or any Service Order are inconsistent with the terms of any applicable tariff, the tariff shall control.

To the extent that the terms of any Service Order are inconsistent with the terms of these Terms of Service, the Terms of Service shall control, excluding pricing discounts, nonrecurring fees, or order fulfillment timing terms to the extent permissible under applicable law set forth in the Service Order that shall control.

(d) No Assignment or Transfer. Customer may not assign or transfer (directly or indirectly by any means, including by operation of law or otherwise) this Service Agreement and the associated Service Order(s), or their rights or obligations hereunder to any other entity without first obtaining consent from Spectrum, and any assignment or transfer in violation of this Section shall be null and void. Spectrum may assign its rights and obligations under this Service Agreement, in whole or in part, and any Service Order(s) to affiliates controlling, controlled by or under common control with Spectrum, or to its successor-in-interest if Spectrum sells some or all of the underlying communications system(s) without the prior approval of or notice to Customer. Customer understands and agrees that, regardless of any such assignment, the rights and obligations of Spectrum in the Service Agreement may accrue to, or be fulfilled by, any affiliate, as well as by Spectrum or its subcontractors.

(e) Severability. To the extent any term, covenant, condition or portion of this Service Agreement is held to be invalid or unenforceable, the remainder of this Service Agreement shall not be affected and each remaining term, covenant or condition shall be valid and enforceable to the fullest extent permitted by law as nearly as possible to reflect the original intentions of the Parties.

(f) Force Majeure. Notwithstanding anything to the contrary in the Service Agreement, neither Party shall be liable to the other for any delay, inconvenience, loss, liability or damage resulting from any failure or interruption of Services, directly or indirectly caused by circumstances beyond such Party's control, including but not limited to denial of use of poles or other facilities of a utility company, labor disputes, acts of war or terrorism, criminal, illegal or unlawful acts, weather, fire, flood, natural causes, mechanical or power failures, fiber cuts, governmental acts or any order, law or ordinance in any way restricting the operation of the Services (each a "Force Majeure Event"). Changes in economic, business, or competitive conditions shall not be considered a Force Majeure Event.

(g) Governing Law; Claims Limitation; Waiver of Jury Trial. The law of the state of New York shall govern the construction, interpretation, and performance of this Service Agreement, except that any conflicts-of-law principles of such state that would result in the application of the law of another jurisdiction shall be disregarded. Any legal action brought under or in connection with the subject matter of the Service Agreement shall be brought only in the United States District Court for the Southern District of New York or, if such court would not have jurisdiction over the matter, then only in a New York State court sitting in the Borough of Manhattan, City of New York. Each party submits to the exclusive jurisdiction of these courts and agrees not to commence any legal action under or in connection with the subject matter of the Service Agreement in any other court or forum. Each Party waives any objection to the laying of the venue of any legal action brought under or in connection with the subject matter of the Service Agreement in the Federal or state courts sitting in the Borough of Manhattan, City of New York, and agrees not to plead or claim in such courts that any such action has been brought in an inconvenient forum. Any claim that Customer wishes to assert under the Service Agreement must be initiated not later than one (1) year after the claim arose. IN ANY AND ALL CONTROVERSIES OR CLAIMS ARISING OUT OF OR RELATING TO THIS SERVICE AGREEMENT, ITS NEGOTIATION, ENFORCEABILITY OR VALIDITY, OR THE PERFORMANCE OR BREACH THEREOF OR THE RELATIONSHIPS ESTABLISHED HEREUNDER, CUSTOMER AND SPECTRUM EACH HEREBY WAIVES ITS RIGHT, IF ANY, TO TRIAL BY JURY.

(h) No Third Party Beneficiaries. The terms of this Service Agreement and the Parties' respective performance of obligations as described are not intended to benefit any person or entity not a Party to this Service Agreement, and the consideration provided by each Party hereunder only runs to the respective Parties, and that no person or entity not a Party to this Service Agreement shall have any rights hereunder nor the right to require performance of obligations by either of the Parties.

(i) Waiver. Except as otherwise provided herein, the failure of Spectrum to enforce any provision of this Service Agreement shall not constitute or be construed as a waiver of such provision or of the right to enforce such provision. To be legally binding on Spectrum, any waiver must be in writing.

(j) Remedies Cumulative and Nonexclusive. Unless stated otherwise herein, all rights and remedies of the Parties under this Service Agreement shall be cumulative, nonexclusive and in addition to, but not in lieu of, any other rights or remedies available to the Parties whether provided by law, in equity, by statute or otherwise. The exercise of any right or remedy does not preclude the exercise of any other rights or remedies.

Attachment A Spectrum Business TV and Enterprise TV Service (collectively, “TV Service”)

Spectrum Business TV Service: Spectrum Business TV Service includes television programming services, including the package of channels and music programming as designated in a Service Order. Customer must notify Spectrum if Customer’s use of the Service will be for private or public viewing. If specified in the Service Order, Spectrum will provide to private-view Customers premium programming such as HBO, Showtime, TMC, Cinemax, STARZ, Encore, or Epix, or Customer premise equipment such as DVRs (collectively, “Premium Services”).

Spectrum Enterprise TV Service: Spectrum Enterprise shall provide the customized multi-channel video programming service (“Enterprise TV Service”) to Customer’s Service Location(s) identified in a Service Order. Enterprise TV Service includes Government TV, Healthcare TV, Hospitality TV, and Education/University TV. Enterprise TV Service includes the channel line-up and those premium and other pay-per-view, video-on-demand, or any visual content as mutually agreed upon in the Service Order. If specified in the Service Order, Spectrum will provide Premium Services to Customer.

1. **Music Programming.** Customer is responsible for and must secure any music rights and/or pay applicable fees required by the American Society of Composers, Authors & Publishers, Broadcast Music, Inc., and SESAC, Inc. or their respective successors, and any other entity, person or governmental authority from which a license is necessary or appropriate relating to Customer’s transmission, retransmission, communication, distribution, performance or other use of the Services. Customer shall not, and shall not authorize or permit any other person to, do any of the following unless Customer has obtained a then-current music license permitting such activity: (i) charge a cover charge or admission fee to any Service Location(s) at the time the TV Service is being displayed or are to be displayed; or (ii) permit dancing, skating or other similar forms of entertainment or physical activity in conjunction with the performance of the TV Service.

2. **Spectrum Equipment.** Spectrum owns and shall at all times have the exclusive right to access, control, maintain, upgrade, use and operate its TV Service, Network, and Spectrum Equipment, except for (i) any video display terminals (“Connections”) or inside wiring owned and maintained by Customer or a third party, and (ii) any conduit, risers, raceways or other spaces where the Network or Spectrum Equipment is located that are owned by Customer or a third party, in which case (as between Customer and Spectrum) Customer shall own such items and Customer hereby grants to Spectrum the non-exclusive right to access and use such space during the Order Term as provided in the Service Agreement. The inside wiring and Connections shall be provided and installed by Customer, at its sole expense, in consultation with Spectrum and any specifications provided by Spectrum to Customer in writing. Spectrum shall not be responsible for an outage that may be due to a fault or failure with respect to any inside wiring, Connections or any systems, equipment or facilities of Customer or any third party, including but not limited to, instances where such outage is due to the Customer’s failure to promptly provide Spectrum with access to the Service Location to inspect, monitor, repair, and/or replace the TV Service or Spectrum Equipment. If changes in technology require the use of specialized equipment to continue to receive Spectrum Business TV Service, Spectrum shall provide such Spectrum Equipment, and Customer shall pay for such Spectrum Equipment at the same rate charged by Spectrum to commercial customers in the same service area as the Service Location.

3. **Provision of Service.** Spectrum may, in its discretion, preempt, rearrange, delete, add, discontinue, modify or otherwise change any or all of the advertised programming comprising, packaging of, channel line-ups applicable to, and/or distribution of its TV Service. Spectrum may make certain TV Service available via mobile applications or third party hardware to Customer and its End Users, which may be subject to additional terms and conditions.

4. **Restrictions.** Customer shall take all necessary precautions to ensure that the TV Service is received only by authorized parties, and that no part of the TV Service is received at any other location, including but not limited to locations where an admission fee, cover charge, minimum or like sum is charged. Customer shall not and shall not authorize or permit any other person to (i) copy, record, dub, duplicate, alter, make or manufacture any recordings or other reproductions of the TV Service (or any part thereof); (ii) transmit the TV Service by any television or radio broadcast or by any other means or use the TV Service outside the Service Location; (iii) move the TV Service to another location after installation; or (iv) insert any commercial announcements into the TV Service or interrupt any performance of the TV Service for the making of any commercial announcements. Customer acknowledges that such duplication, reproduction or transmission may subject Customer to criminal penalties and/or civil liability and damages under applicable copyright and/or trademark laws. TV Service is available for use at commercial establishments and other non-residential buildings (such as a bar, restaurant, hospital, or commercial building). In commercial establishments with public viewing, only the TV Service lineup(s) that is approved for public viewing may be used. Customer may not order or request pay-per-view (PPV) programming for receipt, exhibition or taping in a commercial establishment; or exhibit nor assist in the exhibition of PPV programming in a commercial establishment unless explicitly authorized to do so by agreement with an authorized program provider and subject to Spectrum’s prior written consent.

- 5. Service Inspection.** Customer shall permit Spectrum reasonable access to the Service Locations to inspect the Service Location at periodic intervals as needed to ascertain, among other things, the number of television outlets receiving the TV Service, or verify the estimated viewing occupancy. If any Spectrum inspection reveals that Customer's usage of the TV Service exceeds Customer's rights under the Service Agreement or Service Order and without abrogating or otherwise affecting Spectrum's right to consider such activity a breach of the Service Agreement, Customer shall pay Spectrum an amount equal to one and a half times the MRCs that would have been due for such excessive usage as liquidated damages and not as a penalty. In addition, Customer shall either discontinue any excess usage or thereafter continue to pay the applicable MRCs for such additional usage or Spectrum may, in its discretion, suspend or disconnect a TV Service.
- 6. Noninterference.** Customer shall not interfere with, alter or substitute any of the programs, information or content offered as part of the TV Service, which are transmitted over any of the channels provided hereunder without the prior written consent of Spectrum. Under no circumstances shall Customer have any right to encode, alter, reformat, delete or otherwise modify the TV Service, including without limitation delivery method and any programming contained within the TV Service, without the express written consent of Spectrum. The limitations of this paragraph shall not apply to formatting of programming for Enterprise TV Service as agreed by Spectrum and Customer.
- 7. Charges.** Notwithstanding anything to the contrary in the Service Agreement, the MRCs set forth in a Service Order for TV Service: (i) do not include applicable taxes, regulatory fees, franchise fees or public access fees; and (ii) are subject to change in accordance with commercial rate increases applied to commercial customers.
- 8. End User Support.** Customer shall provide all first level contact and support to its authorized users relating to the Network, Spectrum Equipment, Connections, Customer-provided equipment, and Enterprise TV Service. In the event of any disruption, failure, or degradation of the Enterprise TV Service lasting for twenty-four (24) consecutive hours or more, Customer shall use all reasonable efforts to diagnose the cause of the Enterprise TV Service impacting event. If the Enterprise TV Service impacting event is reasonably determined to be caused by the signal delivered by Spectrum, Customer shall contact the designated Spectrum technical support contact for resolution.
- 9. Set Back Box.** Customer's use of the Set Back Box Product ("SBB") available as part of the Enterprise TV Service (the "SBB Offering") is subject to the following additional terms and conditions:
- (a)** Notwithstanding Section 2 above, Spectrum shall install and program all Connections for the SBB Offering. Customer shall ensure the availability of Connections that are compatible with the SBB Offering including, without limitation, the provision and use of appropriate tuners and Connections having HDTV compatibility.
- (b)** If Customer desires for the front desk portal and the TV user interface associated with the SBB Offering to be co-branded (with Spectrum's and Customer's brands), then Customer shall provide Spectrum Enterprise a copy of Customer's logo in accordance with Spectrum's technical specifications and hereby grants Spectrum a right and license to use such logo for purposes of such co-branding.
- 10. SpectrumU Service.** SpectrumU is an online video service accessible via an Internet browser or through a mobile device application (the "SpectrumU TV App") that permits authorized users to stream video content over-the-top while connected to Customer's Wi-Fi network (the "SpectrumU Service").
- a.** Customer is not required to purchase Internet or Wi-Fi service from Spectrum in order to purchase or use the SpectrumU Service. Many factors affect the quality of service experienced by Customer and its authorized users, including without limitation, the quality of the Internet and Wi-Fi service provided by Customer, events impacting the Customer's Wi-Fi network such as network service attacks, and the authorized user's device.
- b.** Customer acknowledges that Spectrum requires Customer's authorized users to accept separate end user license terms when downloading the SpectrumU TV App.
- c.** Spectrum may require that authorized users update the SpectrumU TV App from time-to-time in order to continue to use the SpectrumU Service via the SpectrumU TV App.

Attachment B
Spectrum Business Voice Service, PRI/SIP Trunking Service
(collectively “Voice Services”)

**Spectrum Hosted Voice, Hosted Voice for Hospitality, Hosted Call Center, and
Unified Communications (collectively, “Hosted Communications Services”)**

DESCRIPTION OF SERVICES:

Voice Services:

Spectrum Business Voice Service: If Customer selects to receive Spectrum Business Voice Service, Customer will receive voice service consisting of one or more lines or connections and a variety of features, as described more fully in the applicable Service Order and price guide.

SIP Trunking Service: If Customer selects to receive the SIP Trunking Service, Customer will receive voice and call processing services via eight or more concurrent call paths using a Session Initiation Protocol (“SIP”) connection to the Customer’s private branch exchange (including any non-Spectrum switch, collectively, “PBX”) or other Customer Equipment, and a variety of features, as described more fully in the applicable Service Order.

PRI Service: If Customer selects to receive PRI Service, Customer will receive voice and call processing services via a full (23B+1D channel) or fractional (12B+1D channel) Primary Rate Interface (“PRI”) connection to Customer’s PBX or other Customer Equipment, and a variety of features, as described more fully in the applicable Service Order.

Analog Lines Over Fiber Service: If Customer selects to receive Analog Lines over Fiber Service, Customer will receive voice and call processing services via an analog connection to the Customer’s PBX that is equipped with an analog line card interface or other analog line based Customer Equipment like a fax machine. A variety of features, including line hunting, are offered, as described more fully in the applicable Service Order.

Toll-Free Service for Spectrum Trunking: If Customer selects to receive Spectrum Toll-Free Service for use with trunking service, Customer will receive voice service consisting of one or more toll-free numbers and access to a variety of optional screening and routing features including:

- Origination Screening: Allows or disallows an originating call made to a single toll-free number based on the originating Number Plan Area (NPA) and/or prefix (NXX) of the caller.
- Origination Routing: Routes an originating call made to a single toll-free number to a pre-determined Direct Inward Dialing (DID) number location based on the originating NPA and/or NXX of the caller.
- Schedule-Based Routing: Routes an originating call made to a single toll-free number to a pre-determined DID number location based on the time of day, day of week or day of year.
- Percentage Call Allocation: Routes an originating call made to a single toll-free number to any of two or more pre-determined DID number locations based on the Customer’s allocated traffic percentage between the DID number locations.
- Toll-Free Dialed Number Identification Service (DNIS): Provides the original called toll-free number to the terminating location, if the toll-free number/call is terminated to the Spectrum trunking service.

Note: Spectrum Toll-Free Service must terminate to a Spectrum trunking service. Not all Toll-Free Service features may be available in all areas.

E911 Location Plus: If Customer selects to receive Spectrum E911 Location Plus for use with trunking service, Customer may add or manage station level address information (for example, floor, suite, or office number) for telephone numbers at a Service Location for Customer’s E911 address records through use of the E911 Location Plus self-service web portal. E911 Location Plus may be used by a Customer operating its own multi-line telephone system in an office or apartment building, or other similar building environment that wishes to provide location information for its station level telephone numbers.

Spectrum Hosted Communications Services:

Spectrum Hosted Voice Service: If Customer selects to receive Hosted Voice Service delivered over fiber or coax, Customer will receive a combination of (i) voice service consisting of one or more telephone lines, (ii) a variety of features, and (iii) voice service technical assistance.

Spectrum Hosted Voice for Hospitality Service: If Customer selects to receive Hosted Voice for Hospitality Service delivered over fiber or coax, Customer will receive a combination of (i) voice service consisting of one or more telephone lines, (ii) a variety of features, and (iii) voice service technical assistance. Customer may also receive Property Management System integration and other services, including a variety of features, as described more fully in the applicable Service Order.

Spectrum Hosted Call Center: If Customer selects to receive Spectrum Hosted Call Center Service; Customer will receive a combination of (i) voice service consisting of one or more telephone lines, (ii) a variety of features, and (iii) voice service technical assistance, as described more fully in the applicable Service Order.

Unified Communications Service: If Customer elects to receive Unified Communications Service features that are added onto a Spectrum Hosted Communications Service, Customer may receive a combination of (i) instant messaging and presence service, (ii) video calling service, (iii) desktop sharing service, and (iv) web collaboration service, as described more fully in the applicable Service Order. Unified Communications Services may also be available in personal computer, mobile phone, and tablet application formats where features, functionalities, and capabilities will differ based on the device used to access the Unified Communications Service (i.e., "soft phone service"). If Customer elects a soft phone service, it will be offered as a separate inbound and outbound service and Customer must choose one or both services prior to installation. Customer may later modify its selection in writing. If Customer or an End User accesses the Hosted Communications Services through use of an application, certain features, functionalities, or capabilities, such as two-way calling, may not be available. 911 CALLING WILL NOT BE AVAILABLE WITH SOFT PHONE SERVICE. When using such an application, Customer and End Users are subject to the terms of such application and the terms of this Service Agreement (including this Attachment). Changes made to the features, functionalities, capabilities of the Unified Communications Service, or to an application accessing Spectrum Hosted Communications Service, shall be in Spectrum's sole discretion.

COMMUNICATIONS SERVICES TERMS AND CONDITIONS:

Customer's use of the Voice Services and Hosted Communications Services (collectively, "Communications Service") is subject to the following additional terms and conditions:

1. Availability of Facilities and Service Modifications:

(a) Services and associated products, facilities, equipment, features and functions will be available in accordance with the terms of this Attachment, where technically and operationally feasible. The quantity of business lines for each Service Location is dependent on the technical feasibility at that specific location. Additional construction and facilities may be required to provide requested Communications Services at Customer's expense. Customer must pay for any special construction prior to the activation of service and/or cancellation of contract.

(b) Spectrum is not obligated to provide Communications Services if Customer intends to or uses the Communications Services (i) to interfere with or impair any service over any facilities and associated Spectrum Equipment or impair the privacy of any communications over such facilities and associated Spectrum Equipment; (ii) to sell, resell, sublease, assign, license, sublicense, share, provide, or otherwise utilize in conjunction with a third party (including, without limitation, in any joint venture or as part of any outsourcing activity) the Communications Services or any component or combination thereof; or (iii) in any manner that results in non-standard calling patterns or practices, including but not limited to, use of the Communications Service for high-volume auto-dialing, continuous or extensive call forwarding, high-volume telemarketing (including, without limitation, charitable or political solicitation or polling), fax or voicemail broadcasting for services with unlimited local and long distance calling plans, and PBX hacking or modem hijacking resulting in excessive usage of long distance service (collectively, "Prohibited Use"). In addition, Prohibited Use shall include augmentation of the Communications Service or Communications Service features, in any way as to change the functionality of the Communications Service or its component features in any manner that is inconsistent with standard commercial calling patterns and practices or the terms of this Service Agreement. Such non-standard calling patterns and practices include, but are not limited to, use of three-way calling, or call forwarding, that results in unusually high traffic volumes or excessive long distance usage. A non-standard calling pattern may also include, when Customer's long distance calling minutes from (i) calls terminating to Alaska, (ii) calls terminating to Guam, (iii) calls terminating to a conference calling service operating in areas with high carrier access rates (e.g., rates that carriers pay one another for network use), or (iv) calls terminating to a chat line service, in the aggregate exceed ten percent (10%) of Customer's total long distance minutes in any one-month billing cycle.

(c) Spectrum may, from time to time, offer additional Communications Service features or functionality, or discontinue certain Communications Service features or functionality. Information about these features or functions will be available at <https://enterprise.spectrum.com> or <https://business.spectrum.com> or in the applicable price guide at <https://spectrum.com>, under "Customer Disclosures." These additional Communications Services, features, or functions may be subject to additional specific terms and conditions, and may be subject to change at any time by Spectrum.

2. Customer-Premise Equipment: Communications Services may require Customer-premise equipment. If required, Spectrum will supply such equipment for so long as Customer remains a Communications Service Customer. Depending on the Communications Service plan, there may be a monthly charge for the equipment. Upon termination of Communications Service for any reason, Customer shall return the Spectrum-supplied equipment within thirty (30) days or Customer will be charged an equipment fee equal to the fee charged by Spectrum at the time the equipment was supplied by Spectrum. An exception to this return policy is when the equipment is also supporting Internet service, in which case Customer may continue to use the equipment until such time as Internet is no longer provided or Spectrum requests a substitution of the equipment.

3. Communications Service Limitations:

a. Unavailable Services: Call Blocking and Fraud. Spectrum does not offer or provide certain operator-assisted services such as dial around services (10-10-XXX), pay services, and third-party billing. Spectrum blocks access to calls with 900 and 976 area codes and to international chat lines. In addition, Spectrum will initiate toll blocking if Customer's excessive use of any toll has surpassed the threshold set by Spectrum and/or Customer's account is delinquent. Notwithstanding any other provision of the Service Agreement or this Attachment, Spectrum may block calls which (i) are made to certain countries, cities, or central office exchanges, or (ii) use certain authorization codes, as Spectrum, in its sole discretion, deems reasonably necessary to prevent unlawful or fraudulent use of Communications Services.

b. Service Outages. Communications Service modems are electrically powered and will not work in a power outage or if the required broadband connection is disrupted or not operating. In the event of power outages, the modem, including all phones and Services connected to or powered by it, will not work. Power outages will disrupt Enhanced 911 ("E911") service and the use of Communications Service as the connection between a security system and central monitoring services. COMMUNICATIONS SERVICE DOES NOT HAVE ITS OWN POWER SUPPLY. IF THERE IS A POWER OUTAGE, OR IF THERE IS A DISRUPTION TO THE SPECTRUM NETWORK OR FACILITIES, COMMUNICATIONS SERVICE WILL NOT WORK. CUSTOMER ACKNOWLEDGES THAT IN SUCH CASES IT WILL NOT BE POSSIBLE TO PLACE OR RECEIVE CALLS INCLUDING CALLS TO ACCESS EMERGENCY 911 SERVICES.

c. Security Systems and Alarm Systems. Although Spectrum will supply a connection (such as an analog line connection), that may allow the operation of Customer's existing security system, alarm system or other non-voice system (such as an elevator alarm line), Spectrum does not guarantee that any such system will be in complete operational order following the installation of Communications Service. As such, it is Customer's obligation to contact its security, alarm or other system provider to inform them of the Communications Services installation, and any change in phone number, and to request a complete operational test of their system immediately following installation of the Communications Services. Spectrum does not provide power back up and is not responsible for the operation of any Customer security, alarm, or any other system in connection with Customer Equipment and, specifically, where the Customer Equipment does not have power backup (e.g., battery backup). In addition, it is Customer's responsibility to test its system on a regular basis. Spectrum does not represent that the Service is fail-safe. Customer is solely responsible for obtaining such testing, ensuring that such testing is completed in a timely manner, and confirming that the security system and any related Customer Equipment at the Service Location connected to the Communications Service operate properly. Customer is solely responsible for any and all costs associated with this activity. In all cases, it is Customer's responsibility to ensure that use of the Communications Service meets all applicable regulations.

d. Prohibited Use: Spectrum prohibits the use of Communications Service as the connection between medical alert systems and a central monitoring station or a fire alarm, and Spectrum will neither connect to such services nor provide technical support for the connection.

4. Use of Services. Customer is solely responsible for: (i) prevention of Prohibited Use and unauthorized, unlawful, or fraudulent use of, or access to, Communications Services, which use or access is expressly prohibited; and (ii) administration and non-disclosure of any authorization codes provided by Spectrum to Customer. Spectrum may require Customer to immediately shut down its transmission of signals if Spectrum concludes, in its sole discretion, that such transmission is a Prohibited Use or causing interference to other customers or with other transmissions generally.

(a) Spectrum reserves the right (i) to refuse to provide, discontinue, or temporarily suspend Communications Services to or from a Service Location where the necessary facilities or equipment are not available under terms and conditions reasonably acceptable to Spectrum, or (ii) to limit or block Communications Services to and from any Service Location or the use of any authorization code, without any liability whatsoever, in the event that Spectrum detects or reasonably suspects either (a) Prohibited Use or fraudulent, or unlawful use of the Communications Services, or use of the Communications Service in violation of the Service Agreement or this Attachment, or (b) consumption of Communications Services in excess of the credit limit (if any).

(b) Customer is responsible for (i) securing its Customer Equipment against placement of fraudulent calls, and (ii) ensuring that Customer Equipment is not being used for any Prohibited Use or fraudulent use or access with Communications Services. Customer shall be responsible for payment of all applicable charges for Communications Services and charged to Customer's accounts, even where those calls are originated by fraudulent means either from Customer's Service Location or from remote locations. Spectrum is not liable for any damages, including toll usage charges, Customer may incur as a result of the unauthorized use of its telephone facilities. This unauthorized use of Customer's facilities includes, but is not limited to, the placement of calls from the Service Location, and the placement of calls through Customer Equipment that are transmitted or carried on Spectrum's Network. Customer shall ensure that all uses by Customer, whether authorized by Customer or not, of the Spectrum Equipment or the Communications Services installed at the Service Location comply with all applicable laws, rules, regulations, and the Service Agreement (including this Attachment).

(c) Spectrum has the right to limit the Communications Service to reasonable quantities of minutes and messages used or consumed by Customer to prevent Prohibited Use and to maintain a high level of service for other Spectrum customers.

5. Access to Telecommunications Relay Communications Service: Telecommunications Relay Service ("TRS") enables deaf, hard-of-hearing or speech-impaired persons who use a Text Telephone ("TT") or Caption Telephone (collectively, "TDD") or similar devices to communicate with the hearing population not using TDD. It also allows the hearing population not using a TT to communicate with deaf, hard-of-hearing, or speech-impaired persons who do use a TDD. Customer will be able to access the state provider to complete such calls by either dialing the applicable telephone number directly or by dialing the number 711, where available. Spectrum may bill Customer a monthly surcharge in order to fund the TRS system.

6. 911 Services:

(a) CUSTOMER ACKNOWLEDGES THAT THE VOICE-ENABLED FIBER CONNECTION, CABLE MODEM, INTEGRATED ACCESS DEVICE ("IAD") OR OTHER SPECTRUM EQUIPMENT USED TO PROVIDE COMMUNICATIONS SERVICE ARE ELECTRICALLY POWERED AND THAT COMMUNICATIONS SERVICE, INCLUDING THE ABILITY TO ACCESS 911 AND E911 SERVICES AND ALARM, SECURITY, AND OTHER MONITORING SERVICES, MAY NOT OPERATE IN THE EVENT OF AN ELECTRICAL POWER OUTAGE, A SPECTRUM NETWORK SERVICE INTERRUPTION, OR A THIRD-PARTY NETWORK SERVICE INTERRUPTION IF THE COMMUNICATIONS SERVICE IS PROVIDED AS AN OVER-THE-TOP OR OFF-NET (TYPE II) SERVICE USING A THIRD PARTY'S NETWORK. CUSTOMER ALSO ACKNOWLEDGES THAT, IN THE EVENT OF A POWER OUTAGE AT A SERVICE LOCATION, ANY BACK-UP POWER SUPPLY PROVIDED WITH A SPECTRUM-PROVIDED VOICE-ENABLED CABLE MODEM, IAD, OR OTHER SPECTRUM EQUIPMENT USED IN DELIVERING THE COMMUNICATIONS SERVICE MAY ENABLE SERVICE FOR A LIMITED PERIOD OF TIME OR NOT AT ALL, DEPENDING ON THE CIRCUMSTANCES, AND THAT THE USE OF A BACK-UP POWER SUPPLY DOES NOT ENSURE THAT COMMUNICATIONS SERVICE WILL BE AVAILABLE IN ALL CIRCUMSTANCES. CUSTOMER SHALL ADVISE EVERY END USER OF COMMUNICATIONS SERVICE THAT SPECTRUM VOICE-ENABLED CUSTOMER EQUIPMENT IS ELECTRICALLY POWERED AND, IN THE EVENT OF A POWER OUTAGE OR SPECTRUM NETWORK SERVICE INTERRUPTION, COMMUNICATIONS SERVICE AND 911 OR E911 MAY NOT BE AVAILABLE. CUSTOMER SHALL DISTRIBUTE TO ALL END USERS OF COMMUNICATIONS SERVICE LABELS/STICKERS (TO BE SUPPLIED BY SPECTRUM) AND INSTRUCT ALL END USERS OF COMMUNICATIONS SERVICE TO PLACE THEM ON OR NEAR THE EQUIPMENT USED IN CONJUNCTION WITH THE COMMUNICATIONS SERVICE.

(b) Customer is not permitted to move Spectrum Equipment from the Service Location in which it has been installed. If Customer moves any of the voice-enabled cable modem, IAD, or other Spectrum Equipment to an address other than the Service Location identified on the Service Order, calls from the modem, IAD, or other Spectrum Equipment to E911 will appear to E911 emergency service operators to be coming from the Service Location identified on the Service Order and not the new address. Customer shall be solely responsible for directing emergency personnel at the customer premises at each Service Location.

(c) Customer will be notified by Spectrum as to whether the Communications Service to which Customer subscribes includes the capability to support E911 service from multiple locations or from a location other than the Service Location. Customer agrees that Spectrum will not be responsible for any losses or damages arising as a result of the unavailability of Communications Service, including the inability to reach 911 or other emergency services, the inability to contact a security system or other monitoring service provider or any failure or fault relating to Customer Equipment, facilities or services, the use of third-party enterprise 911 solutions, or Customer's attempt to access Communications Service from a remote location.

(d) In some geographic areas, Communications Service does not provide the capability to support E911 service from any location other than the Service Location. In those areas, if Customer intends to assign telephone numbers to one or more locations other than the Service Location, Customer shall obtain from the incumbent LEC, a competitive LEC, or Spectrum a local telephone line or lines and ensure that (i) the address(es) associated with the additional location(s) are loaded into the 911 database by the provider of the local telephone line(s) such that 911 calls will deliver to the 911 answering point the actual location and address of the 911 caller and (ii) all 911 calls originated from the additional location(s) are transported and delivered over those local telephone lines. IN SUCH AREAS, CUSTOMER AGREES TO DEFEND, INDEMNIFY AND HOLD HARMLESS SPECTRUM, ITS AFFILIATES, ITS SERVICE PROVIDERS AND SUPPLIERS AND THEIR RESPECTIVE OFFICERS, DIRECTORS, EMPLOYEES AND AGENTS, FROM AND AGAINST THIRD PARTY CLAIMS, LIABILITIES, DAMAGES AND EXPENSES, INCLUDING REASONABLE ATTORNEYS' AND OTHER PROFESSIONALS' FEES, ARISING OUT OF OR RELATING TO 911 CALLS MADE BY END USERS OF THE COMMUNICATIONS SERVICE FROM LOCATIONS OTHER THAN THE SERVICE LOCATION.

(e) If Customer orders E911 Location Plus, (i) Customer may add and/or manage station level address information for telephone numbers at the Service Location through use of the E911 Location Plus self-service web portal; (ii) Customer shall be solely responsible for complying with all applicable local, state, and federal laws, rules, regulations and requirements for operation and use of a multi-line telephone system and for providing accurate station level address information (i.e., the applicable characters for display at a 911 operator) for Customer's telephone numbers; (iii) Customer will transmit the telephone number to Spectrum that is associated with the station that placed a 911 call; and (iv) Customer will ensure the initial and continuing accuracy of the station level address information for each Customer telephone number in the E911 Location Plus self-service web portal. Updates or modifications to station level address information in the E911 Location Plus self-service web portal may require up to 24 hours for implementation and/or updating. Non-Spectrum telephone numbers are not supported and may not be entered into the E911 Location Plus self-service web portal. Notwithstanding Customer's use of E911 Location Plus, Customer is solely responsible for directing emergency personnel at the Service Location.

(f) Customer shall not use the Communications Services, or allow the Communications Services to be used, (i) to provide 911 or E911 services; (ii) route 911 or E911 traffic to any public safety answering point, statewide default answering point, or appropriate local emergency authority or emergency responders; or (iii) for any automatic location information services related to E911 or in any other manner that would cause, or be likely to cause, Spectrum to qualify as a "Covered Service Provider" as defined in 47 C.F.R. §9.19 or any successor provision of the rules of the Federal Communication Commission. Any breach of this provision shall constitute a material breach of the Service Agreement.

(g) CUSTOMER ACKNOWLEDGES THAT SPECTRUM'S "ANYWHERE CONNECT" OR OTHER SOFTPHONE SOFTWARE OR APPLICATIONS (COLLECTIVELY "SOFTPHONE APPLICATIONS") ARE NOT A REPLACEMENT FOR MOBILE OR FIXED LINE VOICE SERVICES. SOFTPHONE APPLICATIONS DO NOT PERMIT END USERS TO MAKE 911 OR OTHER EMERGENCY CALLS. CUSTOMER SHALL PROVIDE ALTERNATIVE COMMUNICATION OPTIONS TO ENABLE END USERS TO MAKE 911 AND OTHER EMERGENCY CALLS WHEN USING SPECTRUM'S SOFTPHONE APPLICATIONS.

7. Custom Caller-ID (Voice Services only): If Customer activates Custom Caller ID for Trunks, which permits a customer to define the telephone number that Spectrum makes available to call recipients for Caller ID purposes, the telephone number chosen must be active and assigned to Customer. Custom Caller ID for Trunks may be used only where Customer employs a Customer Equipment solution that ensures that 911 and other emergency calls placed by an end user are routed to an appropriate public safety answering point or other responding agency based on the caller's location, in a manner consistent with applicable law. If Customer activates Custom Caller ID, they must configure their PBX to out-pulse a telephone number that is active in their Spectrum account and accurately identifies the Service Location for all outbound emergency 911 calls to be handled by that PBX. By activating Custom Caller ID for Trunks, Customer represents and warrants that it employs such a Customer Equipment solution and agrees to continue using such a solution until Customer discontinues its use of Custom Caller ID for Trunks.

Telemarketers or other entities using Custom Caller ID for Trunks must comply with applicable federal and state laws, including obligations requiring identification of: (i) the telemarketer or the party on whose behalf the telemarketing call is made and (ii) the calling party's number ("CPN"), automatic number identification ("ANI"), or customer service number of the party on whose behalf the telemarketing call is made.

The use of substitute or fictitious CPN, ANI, or other calling party information is prohibited. Custom Caller ID for Trunks may not be used by any person or entity in connection with any unlawful purpose.

8. Cross Rate Center Telephone Numbers: If Customer orders or utilizes telephone number(s) with Spectrum trunking service that are associated with a rate center that is different than the rate center where the Spectrum trunking service is located, (i) Customer's telephone number(s) will be provisioned as Direct Inward Dialing (DID) numbers on the Spectrum trunking service (referred to as "Cross Rate Center DIDs"); (ii) all calls originated from the Cross Rate Center DIDs will be rated based upon the rate center associated with the Spectrum trunking service location; and (iii) the address information for E911 calls from the Cross Rate Center DIDs shall be the address associated with the Spectrum trunking service location. Cross Rate Center DIDs may not be available in all Spectrum service areas, and Customer may purchase Remote Call Forwarding (RCF) or Remote Number Forwarding (RNF) in service areas where Cross Rate Center DIDs are not available.

9. Centralized PBX Support: If Customer orders Centralized PBX Support for a Customer PBX that serves multiple Customer locations (each, referred to as a "Remote Site"), Customer will connect each Remote Site to a single site on the Customer's network (referred to as a "Hub Site") and Spectrum trunking service will be installed at the Hub Site. The demarcation point for each Remote Site will be the Hub Site location where the Spectrum trunking service is installed. Customer is responsible for the quality of the network and connections, including the voice Quality of Service (QOS), on its side of the demarcation point, unless such network and connections are provided by Spectrum. Additionally, the following requirements are applicable to Centralized PBX Support:

1. Telephone numbers utilized at each Remote Site (i) must be associated with the rate center where the Remote Site is located, and (ii) must be in a Spectrum service area.
 2. Cross rate center telephone number assignment is not permitted with Centralized PBX Support. Customer may purchase Remote Call Forwarding (RCF) or Remote Number Forwarding (RNF) if a Remote Site requires telephone numbers that are associated with a rate center that is different than the rate center where the Remote Site is located.
 3. The address information for E911 calls from a Remote Site shall be the address associated with the Remote Site. Customer is solely responsible for providing Spectrum with accurate telephone number and service address information for each Remote Site. Customer must contact Spectrum before moving telephones or telephone numbers to any address other than the Remote Site, otherwise calls from the telephones or telephone numbers will appear to E911 emergency service operators to be coming from the Remote Site and not the new address.
 4. Spectrum will calculate and remit 911 fees for each Remote Site based on state and local regulations at the address where telephone(s) and telephone number(s) are located and emergency services are dispatched.
1. All calls from a Remote Site will be rated based upon the rate center associated with telephone number(s) at the Remote Site. Access: Customer agrees to provide Spectrum and its authorized agents with access to Customer's internal telephone or local area network wiring at the network interface device or at some other minimum point of entry in order to facilitate the installation and operation of Communications Service over existing wiring. Customer hereby authorizes Spectrum to make any requests to Customer's landlord, building owner and/or building manager, as appropriate, and to make any requests to other or prior communications service providers, as necessary and appropriate, to ensure that Spectrum has all access to inside wiring and cabling necessary and sufficient to efficiently and securely install Communications Service and all related Spectrum Equipment. The agents and employees of Spectrum shall have the right to enter the Service Location at any reasonable hour for the purpose of installing, inspecting, maintaining, or repairing Spectrum Equipment, instruments and/or lines, or upon termination of the Communications Service, for the purpose of removing such Spectrum Equipment, instruments, and/or lines. Exclusively for Businesses: Communications Services are offered to businesses only and are not available for residential use.
 2. Customer Equipment: Spectrum's obligation is to provide Communications Services to the customer-accessible interface device or equipment installed by Spectrum at the Spectrum Network Demarcation Point at the Service Location. The "Demarcation Point" is the point of interconnection between the Spectrum Equipment or other facilities and the wiring at the Service Location. Customer is responsible for ensuring that all such Customer Equipment conforms to the Federal Communications Commission's requirements set forth in Part 68 of the Code of Federal Regulations (as amended), and Spectrum may discontinue the provision of Communications Services to any location where Customer Equipment fails to conform to such regulations.

Customer shall be solely responsible for satisfying all legal requirements for interconnecting Customer-provided

terminal equipment or communications systems with other provider's facilities, including, without limitation, application for all licenses, permits, rights-of-way, and other arrangements necessary for such interconnection. Satisfaction of all legal requirements, any interface equipment or any other facilities necessary to interconnect the facilities of Spectrum and other providers must be provided at Customer's sole expense.

3. **CPNI:** As a provider of telecommunications and interconnected VoIP services, Spectrum takes seriously its responsibility to protect the confidentiality of its customers' proprietary network information ("CPNI"). Spectrum is committed to protecting its telecommunications and interconnected VoIP service customers' CPNI in accordance with applicable regulatory and statutory requirements. CPNI is customer-specific data that is collected by Spectrum in the course of providing telecommunications or interconnected VoIP services to its customers, and includes information relating to the quantity, technical configuration, type, destination, location, and amount of telecommunications and interconnected VoIP service usage by Customer, and information contained in Customer's bills that is obtained by Spectrum pursuant to its provision of telecommunications or interconnected VoIP service. Customer CPNI will be protected by Spectrum as described herein, in the Spectrum Privacy Policy and in accordance with applicable federal and state requirements. Notwithstanding anything else in this Agreement, the following shall not be CPNI: (i) Customer's directory listing information (*i.e.*, Customer's name, address, and telephone number), and (ii) aggregated, deidentified and/or compiled information that does not contain individual customer characteristics, even if CPNI was used as a basis for such information.

(a) Spectrum may use and disclose Calling Details and CPNI when required by applicable law.

(b) Spectrum may use Calling Details and CPNI and share (including via email) Calling Details and CPNI with its partners and contractors, as well as with Customer's employees and representatives, without Customer consent: (i) to provide services and bills to Customer; (ii) pursuant to applicable law; (iii) to protect the interests of Spectrum, Customer and related parties in preventing fraud, theft of services, abuse, harassment and misuse of telephone services; (iv) to protect the security and integrity of Spectrum Network systems; and (v) to market additional Spectrum services to Customer that are of the same category as the services that Customer purchases from Spectrum.

(c) Spectrum will obtain Customer's consent before using Calling Details or CPNI to market to Customer Spectrum services that are not within the categories of Services that Customer purchases from Spectrum. Customer agrees that Spectrum will not be liable for any losses or damages arising as a result of disclosure of Calling Details or CPNI in accordance with the terms of this Attachment.

(d) Spectrum will respond to Customer requests for Customer Calling Details only in compliance with Spectrum's then-current authentication requirements and applicable law. Such authentication requirements may require Customer to obtain a secure password, which may be required for both online and telephone requests for Calling Details. Spectrum will notify Customer of any requests to change account passwords, activate online account access, and change Customer's account address of record. Spectrum may provide such notice by voicemail, by email or by regular mail to Customer's prior account address of record.

(e) Customer may identify a person or persons who are authorized to request Calling Details by executing an Agency Letter provided by Spectrum upon request. Customer is responsible for: (i) ensuring that Spectrum receives timely notice of any changes to the list of authorized individuals identified in the Agency Letter. Spectrum will not be liable to Customer for any disclosure of Calling Details (including CPNI) that occurs if Spectrum has complied with the Agency Letter.

(f) Provided that Customer is served by at least one dedicated Spectrum representative under this Attachment B, Spectrum may use any one of the authentication methods specified below to confirm that a person seeking Customer CPNI (including, without restriction, call detail records) is authorized to receive it. Spectrum will not be liable to Customer for any disclosure of CPNI (including call detail records) that occurs if Spectrum has complied with one or more of these authentication methods.

1. **Agency Letter.** As provided in paragraph 12.e, Spectrum may provide CPNI to any individual pursuant to the terms of an Agency Letter.

2. **Circuit ID.** Spectrum may provide Customer CPNI to an individual that correctly identifies a Customer Circuit ID—*i.e.*, a Spectrum-specific identifier assigned to a data or voice network connection between two locations.

3. **Premier Code.** Spectrum may provide Customer CPNI to an individual that correctly identifies Customer's Premier Code—*i.e.*, a 4-digit code that Spectrum may provide to Customer.

4. Security Code (CPNI code) Spectrum may provide Customer CPNI to an individual that correctly identifies the account's security code – i.e., a 4-digit code that Spectrum may provide to Customer.
5. Last 4 digits of any MAC addresses listed on account. Spectrum may provide Customer CPNI to an individual that correctly identifies the last 4 digits of the MAC address of any Spectrum-issued device listed on the account – i.e., a cable modem, telephony equipment, set top boxes, etc.
6. Full serial number of any piece of Spectrum Equipment on Customer's account. Spectrum may provide Customer CPNI to an individual that correctly identifies the full serial number of any Spectrum-issued equipment listed on the account - i.e., a cable modem, telephony equipment, set top boxes, etc.

Spectrum reserves the right to add, remove, or alter these authentication methods in its sole discretion.

In the event of a conflict or inconsistency between the CPNI terms in this Attachment B and the remainder of the Service Agreement, the CPNI terms in Attachment B shall control.

7. Directory Listings: Spectrum will facilitate the inclusion of its business customers in alphabetical white and yellow pages directories and/or electronic compilations, as requested and available in Spectrum's service area. These listings are intended as a resource for interested parties who can use them to find the telephone numbers of Spectrum customers who subscribe to Communications Services. Spectrum, in its sole discretion, may limit the length of any listing in a directory or electronic compilation by abbreviating the listing. Listings may be subject to additional rules and restrictions. Toll free and private number service may be available to Customer for an additional charge. A listing may be omitted from a directory or electronic compilation upon Customer's request.

IN THE EVENT THAT A MATERIAL ERROR OR OMISSION IN CUSTOMER'S DIRECTORY LISTING INFORMATION, REGARDLESS OF FORM, IS CAUSED BY SPECTRUM, CUSTOMER'S SOLE AND EXCLUSIVE REMEDY SHALL BE A SERVICE CREDIT IN AN AMOUNT SET BY SPECTRUM'S THEN-CURRENT STANDARD POLICIES OR AS PRESCRIBED BY APPLICABLE REGULATORY REQUIREMENTS, IF ANY. SPECTRUM SHALL HAVE NO OTHER LIABILITY FOR ANY ERROR OR OMISSION IN ANY DIRECTORY LISTING INFORMATION.

8. Minute Packages: If a minutes of use ("MOU") package is exceeded, additional minutes will be charged at the standard toll rates listed at <https://enterprise.spectrum.com> (or successor URL), unless other rates have been provided in the Service Order.
9. Number Porting: Upon submission of a Service Order, Customer may port a telephone number within the rate center for its particular Service Location, or a toll-free number from an existing toll-free service provider, to Spectrum for use with Communications Services. Customer represents and warrants that it has all necessary rights and authority for any porting request, will provide copies of letters of authority authorizing the same upon request, AND SHALL INDEMNIFY, DEFEND AND HOLD HARMLESS SPECTRUM AND ITS AFFILIATES FROM ANY THIRD-PARTY CLAIM RELATED TO OR ARISING OUT OF ANY PORTING REQUEST. Spectrum shall coordinate telephone number porting with Customer's former local service provider ("FLSP") or former toll-free service provider, as appropriate, using the operational process for coordinating telephone number porting as prescribed by the appropriate regulatory authority.

Spectrum may receive requests to port a telephone number currently assigned to Customer to a third -party service provider. Customer agrees that until such time as the porting process has been completed and no further traffic for any ported telephone number traverses the Spectrum Network, Customer shall remain bound by the terms of the Service Agreement and this Attachment (including, without limitation, Customer's obligation to pay for any applicable Services) for any and all traffic which remains on any Customer telephone numbers. Notwithstanding the foregoing, Customer shall notify Spectrum at least five (5) business days in advance of Customer requesting more than twenty (20) telephone numbers to be ported from Spectrum to another service provider. Customer has no property right in telephone number(s) or any other call number designations associated with the Communication Services, and Spectrum may change such numbers as deemed necessary.

10. Call Redirect: If a PRI Service, SIP Trunking Service, Analog Lines over Fiber, or Hosted Communication Service Customer elects to redirect calls to an alternate number and if the receiving telephone number is charged as domestic long distance, charges will be applied against Customer's MOU package on the account or, if exceeded, at the applicable long distance rates.
11. Fiber Internet Access Bundles: If Customer purchases a discounted bundled offering from Spectrum including a SIP Trunking Service, PRI Service, or Hosted Communications Services combined with Spectrum Fiber Internet Access, Customer must have the SIP Trunking Service, PRI Service, or Hosted Communications

Service installed and billing within four months after the provisioning and turn-up of the bundled data circuit.

The monthly recurring charge will revert to the non-bundled rate for the installed service if Customer fails to accept both Services within this timeframe.

12. Unified Communications Service Data: Spectrum and any third-party service provider Spectrum uses to provide Unified Communications Services may use Customer data provided to such service provider in the course of the performance of the Unified Communications Services, including but not limited to any personal data of Customer's employees ("UCS Data"), other than content transmitted by the Unified Communications Services, to (a) communicate with Spectrum or Customer, and (b) administer and/or perform this Service Agreement, any Service Order, and/or any agreement between Spectrum and such third-party service provider. Spectrum and such service provider may access or disclose UCS Data and related information, to: (i) satisfy legal requirements, comply with the law or respond to subpoenas, warrants or court orders, or (ii) act on a good faith belief that such access or disclosure is necessary to protect the personal safety of Spectrum's or such service provider's employees, customers or the public.
13. Voicemail; Call Recording and HIPAA. This paragraph shall apply if Customer is a Covered Entity or Business Associate under HIPAA. If Customer is a Covered Entity or Business Associate, and intends to create, receive, maintain or transmit protected health information ("PHI") through the use of the Hosted Communications Services, Customer agrees that with regard to the Voice Services (i.e. telephone service alone), Spectrum is acting solely as a "conduit". Under HIPAA, a "conduit" is a party that transports information but does not access it other than on a random or infrequent basis necessary for the performance of the transportation service or as required by law. However, Customer agrees that it shall notify Spectrum, and the parties shall enter into Spectrum's Business Associate Agreement, if Customer is to receive or store any PHI on the voicemail or call recording features of the Hosted Communications Services, both of which must occur before such receipt or storage of PHI. In such event, Customer further agrees that it shall not enable or otherwise use any "voicemail to e-mail" feature in connection with the Hosted Communications Services. As used herein, "HIPAA" means the Health Insurance Portability and Accountability Act of 1996, as amended, and its implementing rules and regulations, and "Covered Entity," "Business Associate," and "protected health information" shall have their respective meanings as defined by HIPAA.

Attachment C

Spectrum Business High-Speed Internet Service (“Internet Service”)

Spectrum Business High-Speed Internet Service¹: Internet access service implemented using a hybrid fiber/coax (“HFC”) or a fiber access network. Customer interface to the data network is via Ethernet connection. Internet Service enables a variety of upstream and downstream rates. If Customer elects to receive Internet Service, Spectrum shall provide connectivity from Customer site(s) to Customer’s data network.

Certain Internet Services, or features of Internet Services, may not be available in all service areas and may change from time to time, in Spectrum’s sole discretion. In addition, certain non-facilities-based services provided by third parties may be offered to Customer by Spectrum (“Third-Party Services”). Third Party Services may be subject to additional terms and conditions. Except to the limited extent described in this Attachment, Spectrum makes no warranties of any kind (express or implied) regarding Third-Party Services and hereby disclaims any and all warranties pertaining thereto (including implied warranties of title, non-infringement, merchantability, and fitness for a particular purpose). Spectrum does not have title to and is not the manufacturer of any software or hardware components of any Third-Party Services nor is Spectrum the supplier of any components of such software or hardware. IN NO EVENT SHALL SPECTRUM BE LIABLE FOR ANY DAMAGES ARISING FROM THE PERFORMANCE OR NONPERFORMANCE OF ANY THIRD-PARTY SERVICES.

Customer’s use of the Internet Service is subject to the following additional terms and conditions:

1. **Minimum Equipment Requirements.** Customer shall maintain certain minimum equipment and software to receive the Internet Service (see www.business.spectrum.com for the current specifications). The minimum configuration standards may change, and Spectrum will make reasonable efforts to support previously acceptable configurations; however, Spectrum is not obligated to continue to provide such support. Spectrum may supply Spectrum Equipment such as modems, gateways, routers, or wireless cards, for a fee, to operate the Internet Service. Spectrum reserves the right to provide service only to users with Spectrum-approved equipment. Customer acknowledges that such Spectrum Equipment may require updates and/or changes to the software resident in the Spectrum Equipment and that Customer may be required to perform such updates and/or changes. Customer hereby authorizes Spectrum to perform updates or changes, on-site or remotely from time to time as Spectrum deems necessary, in Spectrum’s sole discretion. Customer will not connect any equipment, other than equipment authorized by Spectrum, to the Spectrum Network. When Spectrum installs the Internet Service, Customer will need a network interface card or adapter providing an Ethernet connection. Alternatively, Customer may connect to a networking device (commonly referred to as a router or gateway).
2. **Software.** At the time of installation of the Internet Service, Spectrum may provide Customer with common Spectrum or third-party software (e.g., a browser and plug-ins) to enable and enhance the Internet Service, subject to the license terms and restrictions in the Spectrum Service Agreement. Customer hereby represents and warrants to Spectrum that Customer owns the operating system software and associated use/license rights thereto for the computers that are connected to the Spectrum Network.
3. **Internet Service Speeds.** Spectrum shall use commercially reasonable efforts to achieve the Internet speed attributable to the bandwidth for the Internet Service selected by Customer, however, actual speed, also known as throughput rate, may vary. Many factors affect speed experienced by Customer as outlined in Spectrum’s Network Management Practices.
4. **Security.** Customer shall take commercially reasonable security measures when using the Internet Service and assumes sole responsibility for use of the Internet Service and for access to and use of Customer Equipment used in connection with the Internet Service and Spectrum Network.
5. **Electronic Addresses; Mailboxes.** All non-vanity email addresses, email account names, and IP addresses (“Electronic Addresses”) provided by Spectrum (and not through Customer’s domain) are the property of Spectrum. Customer may not alter, modify, sell, lease, assign, encumber or otherwise tamper with the Electronic Addresses.

¹ Customers that purchased Internet services from Time Warner Cable Business Class, Brighthouse Networks, or Charter before June 11, 2017 may continue to receive the same Internet service plan, features, and supplemental services at the same prices offered as of June 11, 2017 (“Legacy Services”) until such time as Spectrum discontinues the Legacy Services by written notice to such Customers. If Customer elects to receive Spectrum Business Internet Services available as of June 11, 2017, then Customer will no longer be eligible to receive any Legacy Services, including, without limitation, any supplemental services or features that may not be available as part of the Spectrum Business Internet Services. Please contact your Spectrum sales representative for further information.

(a) Mailboxes. Spectrum owns any and all mailboxes associated with the Internet Service and may reclaim such mailboxes at any time for any reason. Spectrum may also limit the number of new email addresses available per account and the number of email messages that may be sent within a 24-hour time period. Spectrum may lock inactive mailboxes and prohibit the mailbox from receiving new email messages. Customer acknowledges that upon termination of Internet Service, Spectrum will suspend all accounts associated with the Internet Service and delete the contents of all mailboxes, if any. Deleted content cannot be recovered. Email addresses are not permanently retired and become eligible to be reused at Spectrum's sole discretion.

(b) Mail Storage. In no event will Spectrum be responsible for maintaining, and Spectrum will not guarantee storage of, email for any period of time. Spectrum also reserves the right to enforce email storage limits.

(c) Cookies. Customer may access their Spectrum email account at <https://www.spectrumbusiness.net> or by using the Customer's software application (e.g., Outlook, Outlook Express, Apple Mail). When accessing email at <https://www.spectrumbusiness.net>, Customer must have its Internet browser configured to accept cookies. Spectrum will notify the End User if the browser is not configured to accept cookies.

6. Changes of Address. Spectrum may change addressing schemes, including email and IP addresses provided by Spectrum.

7. Acceptable Use Policy. Customer shall comply with the terms of Spectrum's Acceptable Use Policy ("AUP") found at www.business.spectrum.com and that policy is incorporated by reference into this Service Agreement. Customer represents and warrants that Customer has read the AUP and shall be bound by its terms as they may be amended, revised, replaced, supplemented or otherwise changed from time-to-time by Spectrum with or without notice to Customer. Spectrum may suspend Service immediately for any violation of the AUP.

8. Spectrum Business WiFi. Spectrum Business WiFi supported by a Spectrum-provided wireless router is a service available to certain Customers and provides wireless access to the Internet Service within the Service Location ("WiFi Network"), for which Customer may be charged a fee consistent with Spectrum's then-current practices. Customer must purchase Spectrum Internet Service in order to receive Spectrum Business WiFi. The Spectrum-provided WiFi router comes programmed with certain default settings and configurations for the WiFi Network. Customer may modify the default settings and configurations on the Spectrum-provided WiFi router although Spectrum recommends maintaining the default configuration and settings. Spectrum does not guarantee the security of the Spectrum-provided WiFi router and Customer's connection to the Internet Service via the WiFi Network. Customer understands and agrees that Customer is solely responsible for the security of its WiFi Network and must enable and use encryption in order to access Spectrum-provided applications. Customer understands that this service is intended to be used by the Customer and its End Users and that Spectrum accepts no liabilities for any third-party usage.

9. The Spectrum-provided WiFi router will collect and maintain certain information regarding access to and use of the WiFi Network, which information shall include but not be limited to device identifiers, device name, device type, applications and protocols, connections, and traffic flows. Such information will be used by Spectrum to provide the Internet Service and support, as well as for Spectrum's internal business analytics regarding the use of the Internet Service. Customer acknowledges and agrees that Spectrum shall have access to the network name and password associated with the Spectrum-provided WiFi router in order to provide support and diagnostic services. Spectrum reserves the right to modify the WiFi network name and password for the Spectrum-provided WiFi router in order to safeguard Internet security, the security and privacy of Customer's information, where required by law, or for other good cause to provide, upgrade, and maintain the Internet Service, and protect the network, other users of the Internet, or our customers and subscribers. Abusive, vulgar, offensive, inappropriate or profane WiFi Network names are prohibited and may be modified in Spectrum's sole discretion. Customer acknowledges that the Spectrum-provided WiFi router is Spectrum Equipment.

10. Spectrum Business WiFi Hotspot. Spectrum reserves the right to preconfigure the Spectrum-provided WiFi router to distribute a wireless Internet access point (i.e., a Spectrum Business WiFi Hotspot, a "WiFi Hotspot") separate from the WiFi Network. Any use of bandwidth from such wireless access point by third parties will not be considered to be use by the Customer for any purpose. Customer shall have the right to disable such WiFi Hotspot, and shall not be responsible for the security of the WiFi Hotspot.

1. To be eligible to receive the WiFi Hotspot, Customer must be receiving Spectrum Internet Service. Subject to the foregoing, Spectrum will, and Customer grants Spectrum permission to, attach, install, maintain, operate, and upgrade WiFi-related equipment, cables and devices ("WiFi Equipment") on and within the Service Location. The WiFi Equipment will be operated by Spectrum, at no cost to Customer, in order to provide the WiFi Hotspot at the Service Location(s). Customer agrees to provide a standard power source for operation of the WiFi Equipment.

14. Customer's use of the WiFi Hotspot is subject to the following additional terms and conditions:
 - i. The WiFi Hotspot made available at Service Location(s) may be accessed by Customer and its End Users through their Spectrum accounts for no additional charge.
 - ii. To access the WiFi Hotspot, Customer and its End Users and patrons must have a WiFi-enabled device that meets the technical specifications for the WiFi Hotspot.
 - iii. Customer grants Spectrum the right to advertise, market and otherwise promote Customer's location(s) as a WiFi Hotspot access point(s), in any and all forms of media now known or hereafter developed, in Spectrum's sole discretion, and Customer grants Spectrum a license to use Customer's names, trademarks and logos in connection with such advertising, marketing and promotion.
 - iv. Customer will not be entitled to receive any refunds or credits should the WiFi Hotspot be interrupted or fail, regardless of the length of time during which the WiFi Hotspot is unavailable.
 - v. All WiFi Equipment constitutes Spectrum Equipment. Customer may not relocate or disconnect the WiFi Equipment.

1. Desktop Security Service. Desktop Security Service is made up of software and hardware components. Spectrum is not the manufacturer or supplier of any software or hardware components of the Desktop Security Service. Spectrum shall update the Desktop Security Service from time-to-time based on manufacturer-provided updates.

Attachment D

Fiber Internet Access Service ("FIA Service")

Fiber Internet Access: If Customer elects to receive the FIA Service, Spectrum shall provide Customer with a dedicated, scalable connection over a packet-based infrastructure with Internet service provider ("ISP") peering between Customer's data network identified on a Service Order and Spectrum's facilities.

FIA Service, or features of FIA Service, may not be available in all service areas. Spectrum's FIA Service is "On-Net" if it is provided by Spectrum to Service Locations through the Spectrum Network. Spectrum may, in its discretion, provide Customer with "Off-Net" services to geographic locations that are outside of Spectrum's service area or are not currently connected to the Spectrum Network through third party service providers. In addition, certain non-facilities-based services provided by third parties may be offered to Customer by Spectrum ("Third Party Services"). Third Party Services and Off-Net Services may be subject to additional terms and conditions.

Customer's use of the FIA Service is subject to the following additional terms and conditions:

1. **FIA Service Speeds.** Spectrum shall use commercially reasonable efforts to achieve the Internet speed attributable to the bandwidth for the FIA Service selected by Customer on the Service Order, however, actual speed, also known as throughput rate, may vary. Many factors affect speed experienced by Customer as outlined in Spectrum's Network Management Practices.
2. **Bandwidth Management.** Spectrum shall have the right, but not the obligation, to (a) monitor traffic on its Network; and (b) monitor Customer's bandwidth utilization and to limit excessive use of bandwidth (as determined by Spectrum) as Spectrum deems appropriate to efficiently manage the Spectrum Network. If Customer purchases Multi-Path FIA Service, Customer must ensure that no individual Path or data flow of such Service exceeds 2 Gbps (i.e. the rate of data transmission between any two MAC addresses and IP addresses). If Customer's Multi-Path FIA Service includes a Path or data flow that exceeds 2 Gbps, Spectrum may limit such Path or data flow to 2 Gbps. For purposes of this Attachment, (i) "Path" shall mean a connection permitting data transmission between a MAC address and IP address and another MAC address and IP address, and (ii) "Multi-Path" shall mean FIA Services permitting data transmission between or among three (3) or more MAC addresses and IP addresses.
3. **Acceptable Use Policy.** Customer shall comply with the terms of Spectrum's Acceptable Use Policy ("AUP") found at <https://enterprise.spectrum.com> (or the applicable successor URL) and that policy is incorporated by reference into this Service Agreement. Customer represents and warrants that Customer has read the AUP and shall be bound by its terms as they may be amended, revised, replaced, supplemented or otherwise changed from time-to-time by Spectrum with or without notice to Customer. Spectrum may suspend Service immediately for any violation of the Spectrum AUP.
4. **DDoS Protection Services.**
 10. This Section only applies if Customer elects to purchase DDoS Protection Service (whether by monthly subscription or on a per incident basis) to enable detection of distributed denial of service ("DDoS") attacks, receive notifications of attacks, mitigation services, and post-event reporting of DDoS attack activity. Spectrum monitors Customer Internet traffic as it travels across Spectrum's Network to detect anomalies that are symptomatic of a volumetric DDoS attack, as reasonably determined by Spectrum (a "DDoS Attack"). Spectrum requires that Customer: (i) provide information regarding Customer's Internet traffic before Spectrum can provision the DDoS Protection Service and (ii) cooperate with Spectrum to conduct mitigation testing in order to activate the DDoS Protection Service. After DDoS Protection Service activation, Spectrum will monitor Customer's Fiber Internet Access (FIA) network traffic flow for variations to the baseline traffic patterns. When the DDoS Protection Service detects an anomaly that is symptomatic of a DDoS Attack, the DDoS Protection Service alerts Spectrum. The DDoS Protection Service and associated countermeasures are configured to reduce disruption of Customer's legitimate traffic, but Customer may experience slower Internet traffic speed during a DDoS Attack. Spectrum will remove the countermeasures and redirect Customer's inbound network traffic to its normal path if Spectrum determines that the DDoS Attack has ended and there is no activity symptomatic of a DDoS Attack for an additional 4 hours. Customer may obtain status updates and reporting from Spectrum through a customer portal, or other means as determined by Spectrum. During the provisioning process, Customer may designate whether Spectrum is to provide "Proactive" or "Reactive" mitigation services as further described below. If Customer has designated Proactive mitigation, Customer may switch to Reactive mitigation and if Customer designated Reactive mitigation, Customer may switch to Proactive mitigation, at any time during the Initial Order Term. Spectrum will use commercially reasonable efforts to implement Customer's change request within five (5) business days of receipt of Customer's request.
11. **DDoS Proactive Mitigation Services:** If Customer designates Proactive mitigation services, following service activation, Spectrum will automatically implement countermeasures upon Spectrum's detection of a DDoS attack.

12. DDoS Reactive Mitigation Services: If Customer designates Reactive mitigation services, Customer understands that Spectrum will not automatically initiate any DDoS countermeasures unless and until a Customer representative calls Spectrum to notify Spectrum that Customer may be experiencing a DDoS Attack. If Spectrum has an existing ticket indicating detection of a DDoS Attack, Spectrum will use commercially reasonable efforts to initiate countermeasures within 15 minutes.

13. Customer Requirements: Only Spectrum's On-Net FIA Service are eligible to for DDoS Protection Services. DDoS Protection Service is provided on a per circuit basis. Spectrum's ability to provide the DDoS Protection Services is contingent on (i) Customer providing accurate and timely information to Spectrum, including IP addresses and (ii) Customer-provided equipment and software being compatible with the DDoS Protection Service as determined by Spectrum in its sole discretion (e.g., Spectrum will not be able to provide a 3GB DDoS Protection Service if Customer has a 1GB Firewall).

14. Disclaimers: Customer acknowledges the following additional terms for the DDoS Protection Services:

- i. SPECTRUM DOES NOT SUPPORT, AND SHALL HAVE NO OBLIGATION TO PROVIDE, MITIGATION WITH RESPECT TO IPv6.
- ii. DDoS mitigation only mitigates the effects of certain types of DDoS attacks and is not designed as a comprehensive security solution. When Customer Internet traffic is traveling over the Spectrum Network, Spectrum makes no guarantees that only DDoS attack traffic will be prevented from reaching the destination or that only legitimate traffic will reach Customer.
- iii. Spectrum makes no warranty, express or implied, that: (1) with respect to DDoS Protection Service, all DDoS attacks will be detected; (2) DDoS Protection Service will successfully mitigate the incident, including without limitation if the DDoS attack generates a traffic volume that exceeds the amount of traffic that Spectrum can divert; or (3) the DDoS Protection Services will be uninterrupted or error-free.

15. Termination:

If Customer terminates any FIA Service for which Customer has also subscribed to DDoS Protection Service for any reason other than Spectrum's material, uncured breach, then Customer shall be deemed to have terminated the corresponding DDoS Protection Service and Customer shall pay any applicable Termination Charges in accordance with the Service Agreement.

5. DDoS Protection Incident Services. DDoS Protection Incident Services is available if Customer is not an active DDoS Protection subscriber and requests one-time DDoS attack mitigation.

1. **Email Order. DUE TO THE URGENT NATURE TO MITIGATE A DDOS ATTACK, CUSTOMER MAY ORDER DDOS PROTECTION INCIDENT SERVICE VIA EMAIL. TO INITIATE DDOS PROTECTION INCIDENT SERVICE, CUSTOMER MAY AUTHORIZE COMMENCEMENT OF SERVICES VIA SPECTRUM'S THEN- DESIGNATED EMAIL ACCEPTANCE PROCESS. CUSTOMER'S AFFIRMATIVE REPLY ACCEPTING DDOS PROTECTION INCIDENT SERVICE WILL CONSTITUTE A BINDING AGREEMENT BETWEEN CUSTOMER AND SPECTRUM AND CUSTOMER SHALL PAY AN INCIDENT CHARGE FOR EACH MITIGATION WINDOW (DEFINED BELOW) IN ACCORDANCE WITH THE TERMS OF THE AGREEMENT AND AS OUTLINED IN THE AGREED TO EMAIL ACCEPTANCE PROCESS. The per-Mitigation Window incident charge is based on the FIA circuit bandwidth and will be set forth in the email referenced herein.**

2. During the provision of DDoS Protection Incident Service, Customer may elect to covert to subscription-based DDoS Protection Service by contacting Customer's sales account representative.

3. Promptly after Spectrum's receipt of the email indicating acceptance, DDoS Protection countermeasures will start the Mitigation Window. The DDoS Protection Service and associated countermeasures are configured to reduce disruption of Customer's legitimate traffic, but Customer may experience slower Internet traffic speed during a DDoS Attack. Spectrum will continue countermeasures for the duration of each Mitigation Window. Once Spectrum determines that the DDoS Attack has ended and there is no activity symptomatic of a DDoS Attack then, at the conclusion of the Mitigation Window, DDoS Protection Incident Service will end and Spectrum will redirect Customer's inbound network traffic to its normal path.

4. Mitigation Window: A "Mitigation Window" means Spectrum's provision of DDoS Protection Incident Service for a consecutive 72 hour period that begins when Customer accepts the DDoS Protection Incident Service via email reply to Spectrum and Spectrum commences the DDoS Protection Incident Service. Unless Customer requests termination of DDoS Protection Incident Service, if an attack persists beyond a single 72- hour Mitigation Window, Spectrum will commence new subsequent 72-hour Mitigation Windows until the DDoS attack subsides or Customer requests termination of DDoS Protection Incident Service. Each subsequent Mitigation Window is subject to additional fees.

Attachment E

WIDE AREA NETWORK (“WAN”) SERVICES

Ethernet, Cloud Connect and Wavelengths

1. **Ethernet Service:** Spectrum will provide Ethernet Services for Customer locations connected over coaxial and/or fiber-optic cable. Connectivity is established between two or more Customer end-points under a unique customer topology. Spectrum will install the coaxial or fiber-optic cable into each Customer site as listed in the Service Order(s). Spectrum will also supply an edge or network interface device, which is Spectrum Equipment, at each site that will be capable of receiving the Service as specified in the Service Order(s).

Spectrum’s Ethernet Services are “On-Net” if they are provided by Spectrum to Service Locations through the Spectrum Network. Spectrum may, in its discretion, provide Customer with “Off-Net” services to geographic locations that are outside of Spectrum’s service area or are not currently connected to the Spectrum Network through third party service providers. Off-Net Services may be subject to additional terms and conditions.

2. **Cloud Connect Service:** Spectrum will provide a Cloud Connect Service allowing Customer a private, layer 2 connectivity to cloud service providers (CSPs). Therefore, all terms herein shall apply to the Cloud Connect Service in addition to the Ethernet Service.

3. **Wavelengths Service:** Spectrum will provide Wavelengths for Customer locations connected over fiber-optic cable. Wavelengths are a high speed (10Gbps and 100Gbps), optical data transport solution that uses dense wave division multiplexing (DWDM) technology, delivering low-latency bandwidth across Spectrum Enterprise’s dense fiber network. Connectivity is established between two Customer end-points in a point-to-point topology. Spectrum will install the fiber-optic cable into each Customer site as listed in the Service Order(s). Spectrum will also supply an edge device, which is Spectrum Equipment, at each site that will be capable of receiving the Service as specified in the Service Order(s).

Spectrum’s Wavelengths are “On-Net” if they are provided by Spectrum to Service Locations through the Spectrum Network. Spectrum may, in its discretion, provide Customer with “Off-Net” services to geographic locations that are outside of Spectrum’s service area or are not currently connected to the Spectrum Network through third party service providers. Off-Net Services may be subject to additional terms and conditions.

4. **Additional terms of use:** Customer’s use of Ethernet Service, Wavelength and, as applicable, Cloud Connect Service, are subject to the following additional terms and conditions:

1. If Customer purchases Multi-Path Ethernet Service, Customer must ensure that no individual Path or data flow of such Service exceeds 2 Gbps (i.e. the rate of data transmission between any two MAC addresses and IP addresses). If Customer’s Multi-Path Ethernet Service includes a Path or data flow that exceeds 2 Gbps, Spectrum may limit such Path or data flow to 2 Gbps. For purposes of this Attachment, (i) “Path” shall mean a connection permitting data transmission between a MAC address and IP address and another MAC address and IP address, and (ii) “Multi-Path” shall mean Ethernet Services permitting data transmission between or among three (3) or more MAC addresses and IP addresses.

2. Spectrum shall have the right, but not the obligation, to (a) monitor traffic on the Spectrum network, in its sole discretion; and (b) monitor Customer’s bandwidth utilization as Spectrum deems appropriate to efficiently manage its Network.

3. Customer’s use of Ethernet and/or Wavelengths Services is presumed by Spectrum to be jurisdictionally interstate, pursuant to the Federal Communications Commission’s mixed use “10% Rule” (47 C.F. R. 36.154, 4 FCC Rcd. 1352). It is Customer’s sole responsibility to notify Spectrum if Customer’s use of the Service is not jurisdictionally interstate pursuant to the 10% Rule and, so long as Customer’s use of the Service remains not jurisdictionally interstate, Customer must certify at least annually that this condition remains in effect, using the form and format available upon request from Spectrum. If Customer fails to provide such certification or if the Customer’s certification is inaccurate or invalid, Customer shall be liable for any resulting fees, fines, penalties and/or costs incurred by Spectrum.

In addition, if Spectrum determines that Customer's use of the Ethernet Services is likely to be deemed not to be jurisdictionally interstate, and therefore that Spectrum's provision of the Ethernet Services is likely to put Spectrum or its licenses, permits or business at risk, or otherwise cause financial, regulatory or operational problems for Spectrum, then Spectrum may immediately suspend the provision of any or all Ethernet Service under any or all affected Service Orders until such time as either (a) Customer provides Spectrum with satisfactory assurances that Customer's use of Ethernet Services shall be deemed to be jurisdictionally interstate or (b) Customer is otherwise brought into full compliance with any applicable laws and regulations. Unless prohibited under applicable law, Customer at its own expense, shall indemnify, defend, and hold harmless Indemnified Parties against any and all third party claims, liabilities, lawsuits, damages, losses, judgments, costs, fees and expenses incurred by any Indemnified Parties, including reasonable attorney and other professional fees and court costs incurred by Spectrum Indemnified Parties, to the full extent that such arise from or relate to any fees, fines or penalties incurred by Spectrum as a result of Customer's violation of the 10% Rule.

Attachment F

Managed Services

Software-Defined Wide Area Networking Service (“SD-WAN Service”), Managed WiFi Service, Managed Router Service (“MRS”), Managed Security Service (“MSS”) and Cloud Security (“vSecurity”)

If Customer elects to purchase a Managed Service, Spectrum shall provide Customer with any required customer premises equipment (“CPE”) through which Customer can receive the purchased service(s) at Customer’s Service Location(s) across Customer’s network, as may be more particularly described and set forth in the applicable Service Order.

Customer’s use of any of the Managed Services, as applicable, are subject to the following additional terms and conditions:

The Managed Services may include software, firmware, and hardware components supplied by Spectrum or third parties. Spectrum is not the manufacturer or supplier of any software or hardware components of the Managed Services. Spectrum will update the Managed Service from time to time based on manufacturer-provided updates.

Technical Configuration Questionnaire. Spectrum may request Customer complete a Technical Configuration Questionnaire. Customer agrees that Spectrum is relying on Customer’s configuration information in order to provide the Managed Service, and that Spectrum shall have no responsibility for any resulting loss or damage resulting from Spectrum’s reliance on and use of, Customer-provided configuration information. If Customer requests that Spectrum modify the configuration of the SD-WAN Service or Virtual Security Service in accordance with specifications provided by Customer that deviate from those specifications in the Technical Configuration Questionnaire, then Spectrum’s sole obligation will be to implement the configuration settings requested by Customer, and Spectrum shall have no responsibility or liability for any resulting loss or damage incurred by Customer or any third-parties arising directly or indirectly as a result of any such Customer-requested configuration modifications.

Security Limitations. SPECTRUM DOES NOT PROVIDE MONITORING OF SECURITY EVENTS, SECURITY EVENT MITIGATION OR ADVICE REGARDING SECURITY ISSUES OR THREATS IN CONNECTION WITH THE MANAGED SERVICES. SPECTRUM IS NOT RESPONSIBLE FOR SECURITY BREACHES THAT OCCUR DUE TO CUSTOMER’S USE OF ANY MANGED SERVICE CPE OR MANAGED SERVICE, OR FOR ANY MALICIOUS DATA THAT MAY BE TRANSMITTED OVER THE PROVIDED NETWORK.

SOFTWARE DEFINED WIDE AREA NETWORK (“SD-WAN”) SERVICE: This section applies only if the Customer purchases the SD-WAN Service:

1. Spectrum shall provide Customer with one or more SD-WAN customer premises equipment (“CPE”) through which Customer can deploy and use Virtual Private Network connectivity and associated virtualized network functions at Customer’s Service Location(s) across Customer’s network, as may be more particularly described and set forth in the applicable Service Order.
2. Customer is responsible for Internet connectivity at all Customer’s Service Location(s) in order for Customer to utilize the SD-WAN Service. If Internet connectivity at a Service Location for any reason at any time suffers from degradation or is unavailable, then the SD-WAN Service at such Service Location may be degraded or inoperable; and SPECTRUM SHALL HAVE NO LIABILITY FOR ANY RESULTING LOSS OR DAMAGE FROM SUCH DEGRADATION OR INOPERABILITY OF THE SD-WAN SERVICE.

MANAGED WIFI SERVICE: This section applies only if the customer purchases the Managed WiFi Service.

- a. Spectrum will provide a managed WiFi solution with wireless access points (“WAPs”) deployed at the designated Service Location to enable designated users of the Customer’s choice to wirelessly access the Internet as more specifically set forth in a Service Order. Managed WiFi Service or certain features, may not be available in all service areas and may change from time to time, in Spectrum’s sole discretion

b. Internet Access. Spectrum may provide Managed WiFi Service to locations that use a centralized Internet access configuration where Spectrum will not be the primary Internet access provider if Customer purchases an Internet access Service for the sole purpose of providing Spectrum Enterprise out of bandwidth management (“OOB”). This OOB service would only provide connectivity to the Managed WiFi Service equipment (switches and controllers).

c. Connectivity to Local Area Networks. Configuration of the Managed WiFi Service will be as agreed in the WiFi questionnaire completed by the Parties. Managed WiFi Service may provide a separate SSID for employee Internet access if specified on the WiFi questionnaire. A second WLAN will be created on the wireless network with its own VLAN assigned. The aggregation switch will be configured to hand off an Ethernet Service port to Customer. In this scenario, network functions (DHCP and NAT, for example) may be handled by Customer’s LAN. Customer will need to train and engage Customer’s staff for all ongoing support issues. The Managed WiFi Service does not include support for connectivity to any device (printers, laptops, computers, routers, etc.).

MANAGED ROUTER SERVICE (“MRS”): This section only applies if the customer purchases the Managed Router Service.

1. Spectrum will provide a managed router solution with a router deployed at the designated Service Location configured according to the Questionnaire. Managed Router Service or certain features, may not be available in all service areas and may change from time to time.

2. Connectivity. The Managed Router Service is only available when connected via Spectrum FIA or Spectrum Ethernet services including in-network and Type II connections. A 3rd party connection can be used as a secondary connection where Spectrum is providing the primary connection.

3. Termination. If Customer terminates any Spectrum connection service for which Customer has also attached the Managed Router Service, leaving the Manager Router only connected to non-Spectrum service for any reason other than Spectrum’s material, uncured breach, then Customer shall be deemed to have terminated the corresponding Managed Router Service and Customer shall pay any applicable Termination Charges in accordance with the Service Agreement. In all cases, the Managed Router Service cannot be delivered unless connected to a Spectrum service and shall be considered terminated if there is no Spectrum connection service.

MANAGED SECURITY SERVICE (“MSS”): This section only applies if the customer purchases the Managed Security Service.

1. Spectrum will provide a managed firewall solution with a firewall deployed at the designated Service Location configured according to the Questionnaire. Managed Security Service or certain features, may not be available in all service areas and may change from time to time.

2. Connectivity. The Managed Security Service is only available when connected via Spectrum FIA or Spectrum High Speed Internet services including in-network and Type II connections. A 3rd party connection can be used as a secondary connection where Spectrum is providing the primary connection.

3. Termination. If Customer terminates any Spectrum connection service for which Customer has also attached the Managed Security Service leaving the Managed Security Service only connected to a non-Spectrum service for any reason other than Spectrum’s material, uncured breach, then Customer shall be deemed to have terminated the corresponding Managed Security Service and Customer shall pay any applicable Termination Charges in accordance with the Service Agreement. In all cases, the Managed Security Service cannot be delivered unless connected to a Spectrum service and shall be considered terminated if there is no Spectrum connection service.

CLOUD SECURITY (“vSECURITY”) SERVICE: This section only applies if the customer purchases the vSecurity Service.

(c) The vSecurity Service delivers firewall capabilities through a virtual firewall hosted in a Spectrum Data Center. The Data Center location is based on the geographic location of the customer site(s) and other considerations made at Spectrum’s sole discretion.

(d) Connectivity. The vSecurity Service is only available when connected via Spectrum Ethernet, Spectrum FIA, and SD-WAN services including in-network and Type II connections.

(e) Termination. If Customer terminates any Spectrum connection service for which Customer has also attached the vSecurity Service then Customer shall be deemed to have terminated the corresponding vSecurity Service and Customer shall pay any applicable Termination Charges in accordance with the Service Agreement. In all cases, the vSecurity Service cannot be delivered unless connected to a Spectrum service and shall be considered terminated if there is no Spectrum connection service.

Attachment G

Wireless Internet Access Service

Spectrum Wireless Internet Access Service: Wireless Internet access service is a fixed-location data service, not a voice service that is implemented using 4G LTE Internet access technology ("WIA Service"). The network used to transmit the data services that support WIA Service is owned and operated by a licensed commercial mobile network operator(s) and not Spectrum (the "Third-Party Network"). WIA Service may not be available in all Spectrum service areas.

Spectrum offers two types of WIA Service: **Wireless Internet** and **Wireless Internet Backup**. Customer's use of Wireless Internet and/or Wireless Internet Backup Service is subject to the following additional terms and conditions:

(a) Wireless Internet:

1. **Plan Terms.** Wireless Internet is available in multiple service plans with either unlimited data usage per month or with a data allowance limit per month. For Wireless Internet ordered with unlimited data usage, Spectrum reserves the right to revise the wireless data rate of such service plan to 128Kbps when Customer has used 70GB of data within a single monthly billing cycle. At the start of the next billing cycle, the data usage and data speed will reset. For Wireless Internet ordered with a data allowance, once the data allowance is reached in a given monthly billing cycle, excess data charges may apply as outlined in Section 4 below.

2. **Data Sharing; Excess Data Charges.** If Customer purchases more than one of the same Wireless Internet service plans (excluding unlimited plans), all such same service plans will participate within the same data pool ("Data Pool"). For example, if Customer purchases 3-1GB Wireless Internet service plans and 2-5GB Wireless Internet service plans, then Customer will have two separate Data Pools, a 1GB service plan Data Pool and a 5GB service plan Data Pool. The maximum Data Allowance for a Data Pool is calculated as the Wireless Internet service plan data allowance multiplied by the number of service plans. Any unused data in the maximum Data Allowance for a single service plan within the Data Pool is first applied to the overages for the service plan with the lowest overage need and then to the next lowest overage service plan until the maximum Data Allowance has been applied. If the total data usage is less than the maximum Data Allowance for the Data Pool, there is no excess usage charge. If, however, all of the service plans within the Data Pool collectively exceed the maximum Data Allowance, then Customer shall be subject to additional Service Charges with respect to the excess usage as stated on the applicable Service Order. Unused Data Allowance in a given billing cycle does not "roll over" to future billing cycles. Wireless Internet service unlimited service plans and Wireless Internet Backup services are not eligible for participation within a Data Pool.

(b) Wireless Internet Backup:

Wireless Internet Backup is a secondary Internet service and may have limited functionality during failover of the primary Internet service. Customer may only order Wireless Internet Backup with and for the same Order Term as a new or existing FIA Service (up to a maximum of 200 Mbps) provided by Spectrum, and not a third party provider, for the same Service Location, which service shall be cancelled if the FIA Service is terminated for any reason. The wireless data rate will not exceed 10 Mbps. Spectrum may terminate the Wireless Internet Backup Service if Spectrum determines, in its sole discretion, that: (a) Spectrum is unable to provide the Wireless Internet Backup at the requested Service Location; or (b) Customer is using the Wireless Internet Backup as a primary Internet service. Spectrum's termination of the Wireless Internet Backup Service shall have no effect on the FIA Service, which Service Order will remain in effect.

1. **WIA Billing and Data Usage.** The Service Charges will be billed in the amounts stated on the applicable Service Order. Spectrum invoices for monthly recurring Service Charges, plus applicable taxes, fees, and surcharges, in advance on a monthly basis. All usage-based charges will be invoiced monthly in arrears. Except as set forth below with respect to data sharing, if a Service Order for Wireless Internet sets forth a maximum "Data Allowance" (defined below), then Customer shall be subject to the additional Service Charges with respect to such excess usage that is stated on the applicable Service Order. "Data Allowance" means the aggregate number of gigabytes of data that may be sent and received using the Wireless Internet services in a single monthly billing cycle under the applicable Wireless Internet service plan, rounded up to the nearest gigabyte.

2. **Service Quality.** Spectrum selects the Third-Party Network from multiple network operators for each Service Location. Customer acknowledges that (i) WIA Service may be unavailable if the wireless device used in providing WIA Service is not in range of a transmission site; and (ii) there are many factors that may impact availability and quality of WIA Service, including without limitation, network capacity, signal strength, terrain, trees, placement of buildings, environmental conditions, the characteristics of the physical wireless device and any device to which it is attached, government regulations, maintenance, or other activities affecting service operations; (iii) service interruptions may occur as a result of acts of third parties that damage or impair the Third-Party Network or in connection with modifications, upgrades, relocations, repairs or other similar activities conducted by the Third-Party Network operator; and (iv) data delays and omissions may occur. Spectrum does not guarantee any bandwidth specifications and actual Internet upload and download speed, also known as throughput rate, may vary. The Third-Party Network operators may also suspend services from time-to-time. Customer waives all rights and claims against Spectrum and the Third-Party Network operators related to, or the result of, the unavailability OR QUALITY of WIA SERVICE AND/OR the Third-Party Network.
3. **Power Disruptions.** The WIA Service equipment is electrically powered and will not work in a power outage. Spectrum may supply Customer with a battery backup for use in the event of a power outage in connection with the Wireless Internet Backup service. WIRELESS INTERNET ACCESS SERVICE DOES NOT HAVE ITS OWN POWER SUPPLY. IF THERE IS A POWER OUTAGE, WIRELESS INTERNET ACCESS SERVICES WILL NOT WORK.

1. Acceptable Use Policy; Third Party Network Terms.

1. Customer shall comply with the terms of Spectrum's Acceptable Use Policy ("AUP"), found at www.enterprise.spectrum.com (or the applicable successor URL) and that policy is incorporated by reference into this Service Agreement. Customer represents and warrants that Customer has read the AUP and shall be bound by its terms as they may be amended, revised, replaced, supplemented or otherwise changed from time-to-time by Spectrum with or without notice to Customer. Spectrum may suspend Service immediately for any violation of the AUP. The AUP shall apply even though the traffic is delivered over a Third-Party Network.
2. Customer shall not resell the WIA Service, either alone or as part of a solution, to end users. Customer must also comply with the applicable service terms and conditions and acceptable use and other policies of the Third-Party Network operators ("Third-Party Terms") found at:

AT&T Internet of Things Wireless Communications Service Guide
http://serviceguidenew.att.com/sq_flashPlayerPage/M2M

Verizon ThingSpace Terms and Conditions
<https://thingspace.verizon.com/legal/terms-and-conditions/>

The Third-Party Terms may be amended, revised, or supplemented from time to time in the Third-Party Network operator's sole discretion. Customer is solely responsible to verify the applicable Third-Party Terms, including any changes to such Third-Party Terms.

1. To the extent that the Third-Party Terms or any acceptable use policy are inconsistent with the Spectrum Terms of Service or AUP, the Spectrum Terms of Service and AUP shall control.
3. **Security; Use Restrictions.** Customer shall take commercially reasonable security measures when using the WIA Service, and Customer assumes sole responsibility for use of the WIA Service and for access to and use of Customer Equipment used in connection with the WIA Service. If Customer Equipment is lost or stolen, Customer shall immediately notify Spectrum in writing so that Spectrum can suspend the WIA Service with respect to such Customer Equipment in order to prevent unauthorized use of the WIA Service. Until Spectrum receives Customer's notification, in a manner directed by Spectrum, of lost or stolen Customer Equipment, Spectrum is entitled to assume that any use of the WIA Service in connection with such device is authorized by Customer and Customer shall be responsible for any such use and associated charges. Customer shall not use WIA Services for any remote medical monitoring or any other activity that is subject to the Health Insurance Portability and Accountability Act. Due to regulatory requirements, Customer must obtain Spectrum's approval before installing, deploying or using any regeneration equipment or similar mechanism (for example, a repeater) to originate, amplify, enhance, retransmit or regenerate WIA Services.
4. **Termination.**
 1. If Customer cancels a WIA Service, in addition to any applicable Termination Charges, Customer shall pay all Service Charges for the WIA Service through the end of the monthly billing period during which the WIA Service was cancelled, including charges for exceeding any data usage limitations that applied to a WIA Service plan, and applicable taxes and fees.

2. When a line of service is terminated, Customer shall ensure that the Equipment that was activated on that line ("Terminated Equipment") does not register or attempt to register after such termination on the Third-Party Network on which the WIA Service had been provided. Spectrum shall have the right to use over-the-air means to access Terminated Equipment for the purpose of downloading software or the Third-Party Network operator's then-current preferred roaming list designed to disable Terminated Equipment to prevent attempts to contact the Third-Party Network.
 3. Spectrum may terminate WIA Service immediately upon notice to Customer if Spectrum is no longer permitted by the Third-Party Network operator to provide WIA Service to its customers for any reason.
5. **NO THIRD-PARTY LIABILITY.** CUSTOMER EXPRESSLY UNDERSTANDS AND AGREES THAT IT HAS NO CONTRACTUAL RELATIONSHIP WHATSOEVER WITH THE THIRD-PARTY NETWORK OPERATORS OR THEIR AFFILIATES OR CONTRACTORS AND THAT CUSTOMER IS NOT A THIRD-PARTY BENEFICIARY OF ANY AGREEMENT BETWEEN SPECTRUM OR ITS LICENSORS AND THE THIRD-PARTY NETWORK OPERATORS. IN ADDITION, CUSTOMER ACKNOWLEDGES AND AGREES THAT : (A) THE THIRD-PARTY NETWORK OPERATORS AND THEIR AFFILIATES AND CONTRACTORS SHALL HAVE NO LEGAL, EQUITABLE, OR OTHER LIABILITY OF ANY KIND TO CUSTOMER AND CUSTOMER HEREBY WAIVES ANY AND ALL CLAIMS OR DEMANDS THEREFOR; (B) DATA TRANSMISSIONS AND MESSAGES MAY BE DELAYED, DELETED OR NOT DELIVERED, (C) THE SERVICE IS A FIXED-LOCATION DATA SERVICE, NOT A VOICE SERVICE, AND 911 OR SIMILAR EMERGENCY CALLS MAY NOT BE COMPLETED, AND (D) THE THIRD-PARTY NETWORK OPERATORS CANNOT GUARANTEE THE SECURITY OF WIRELESS TRANSMISSIONS AND WILL NOT BE LIABLE FOR ANY LACK OF SECURITY RELATING TO THE USE OF THE CONNECTIVITY SERVICES.