

## TEACH Public Schools Executive Salary Summary 2019 – 2020

Chief Executive Officer

\$43,755 Salary Per Year

10% Health, Dental, Vision & Life Insurance Benefits Cap

2.5% 403b Match

CALSTRS- \$7307

Superintendent

\$156,270 Salary Per Year

10% Health, Dental, Vision & Life Insurance Benefits Cap

2.5% 403b Match

CALSTRS – \$26,097

Chief Operating & Financial Officer

\$136,738 Salary Per Year

10% Health, Dental, Vision & Life Insurance Benefits Cap

2.5% 403b Match

CALSTRS - \$22,835

### Market Data

Los Angeles based Non Profit Charter School Management Organizations with three schools and between 800-1200 students. Data pulled from PayScale, 990Finder, and available board minutes.

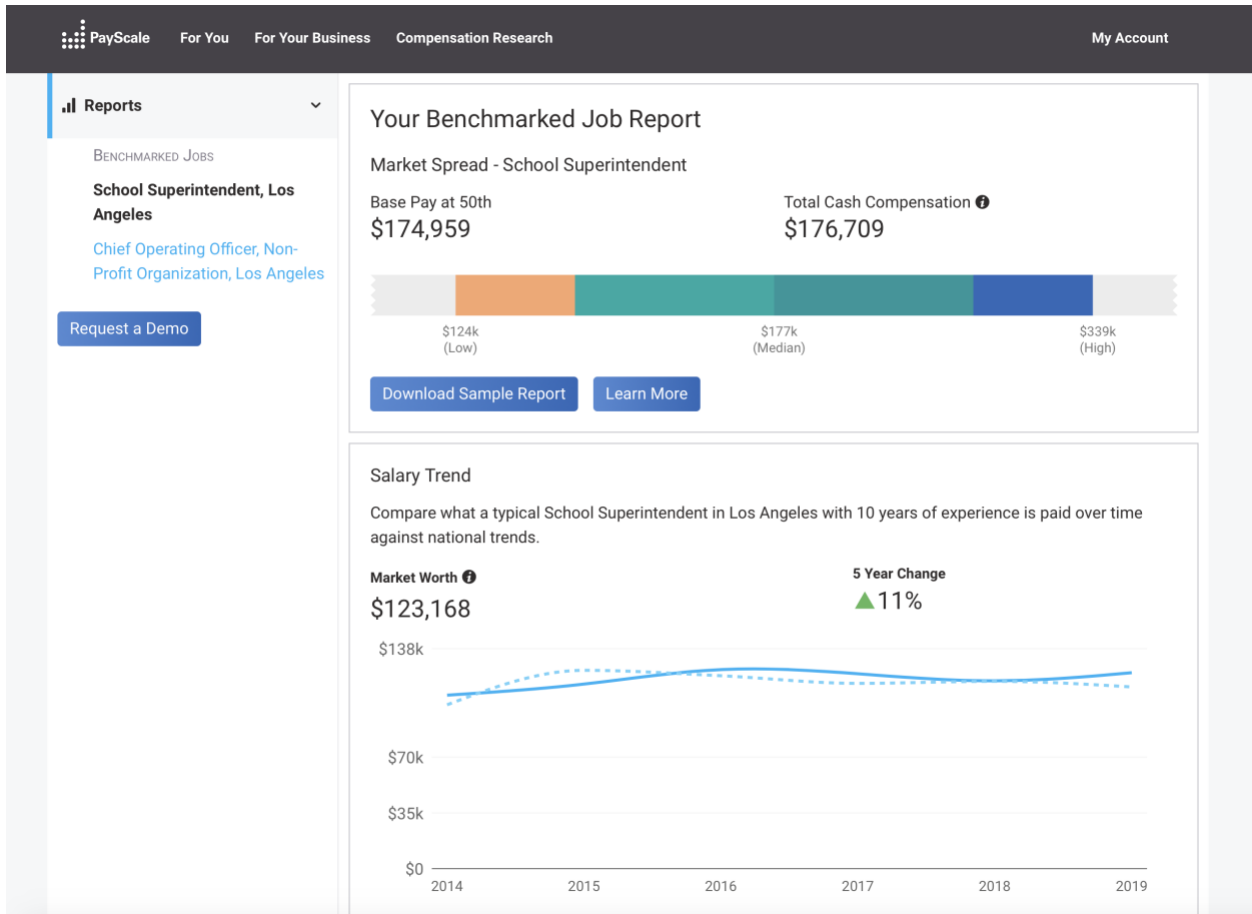
### **Superintendent/Executive Director**

PayScale Report – Median Salary \$174,959 / Market Worth \$123,168

Comp Org Data (Three School Los Angeles based CMO)

Bert Corona - Executive Director \$175,630.61 (2016)

STEM Prep – Executive Director \$200,000.00 (2018)



## Chief Operating & Financial Officer

PayScale Report – Median Salary \$152k / Market Worth \$154,907  
 Comp Org Data (Three School Los Angles based CMO)

- Bert-Corona – COO Salary Per Year \$139,111.32 (2016)
- Citizens of the World LA - COO/CFO - Salary Per Year \$170,000 (2019)
- STEM Preparatory- COO - \$118,450 (2018)

## Your Current Pay

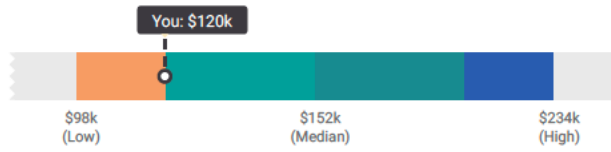
Range ●

\$98k - \$234k

Difference from Median

▼ \$32k

You're making less money than 75% of people like you



## Your Market Worth Over Time

Compare what a typical Chief Operating Officer (COO) in Los Angeles with 5 years of experience is paid over time against national trends.

Your Market Worth ●

\$154,907

5 Year Change

▲ 6%

