

***Superintendent's Report  
To the  
Board of Directors  
December 2, 2023***



# ***Wildly Important Goals- WIGs***

## ***WIG 1***

100% of staff will  
report improved school  
culture

## ***WIG 2***

100% of eligible  
scholars will  
graduate



## ***WIGs***

100% of staff will report improved school culture

100% of eligible scholars will graduate.

## ***LCAP***

Increase scholar academic achievement in core academic subjects.

Increase scholar and parent engagement and involvement.

Increase college and career readiness for scholars.

Ensure that at-promise scholars are making progress toward earning a high school diploma.



## ***WASC***

Improve the 4 year graduation cohort in each school to meet or exceed state averages.

Increase participation in state testing to 95% and maintain 95% participation rates in local measures.

Increase college and career readiness for scholars by expanding the AVID program

Create and implement a comprehensive data plan that is accessible by 100% of Compass staff and families.



# ***Graduation Rate***



# *HS Credit Status Tracker*



**GREEN**

I'm on track for graduation  
with the credits I've earned



**YELLOW**

I can graduate on time with  
credit recovery (ACOP)



**RED**

I can graduate in 5+ years  
with credit recovery

# ***Scholar Achievement Data***



# *Fall STAR Participation Rates*

	<b>Early Lit</b>	<b>Math</b>	<b>Reading</b>
<b>Los Angeles</b>	91.38%	94.01%	93.57%
<b>San Diego</b>	92.2%	95.15%	94.8%
<b>Yolo</b>	92.56%	92.75%	92.55%

# *Scholar Growth Percentile*

## SGP Explained

Student Growth Percentile (SGP) is determined by first calculating growth between current test scores and up to two previous scores, then comparing that calculation to the growth of academic peers.

At Compass, we compare Fall Beginning of Year (BOY) to Spring End of Year (EOY) scores to obtain an SGP.

This is a new metric for Compass and is a requirement for Verified Data for Charter Renewal.

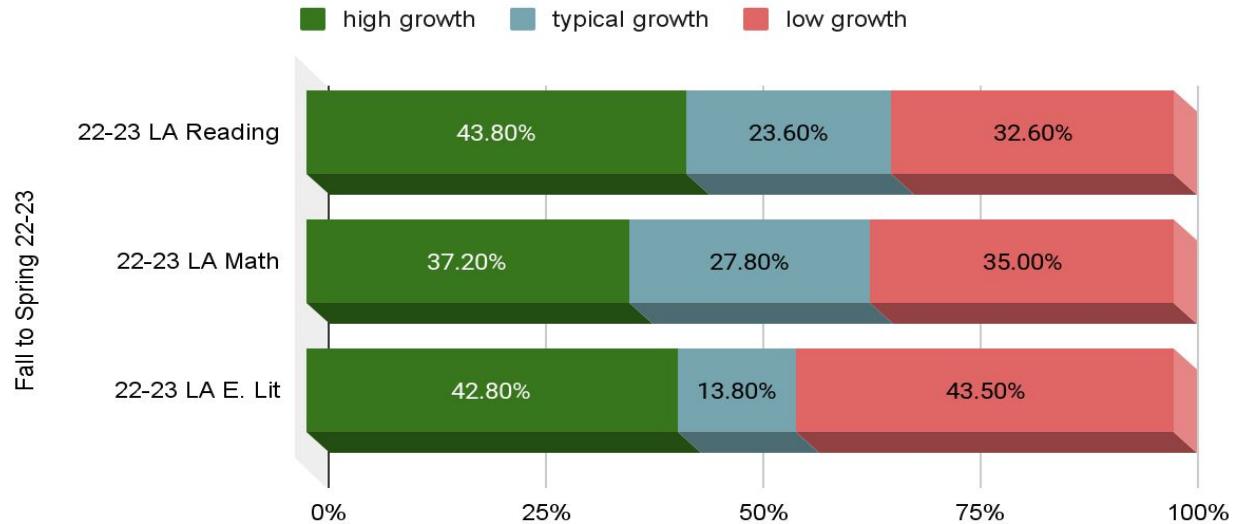


# Scholar Growth Percentile

Los Angeles

## Scholar Growth Percentile (SGP)

Compass Charter Schools of Los Angeles

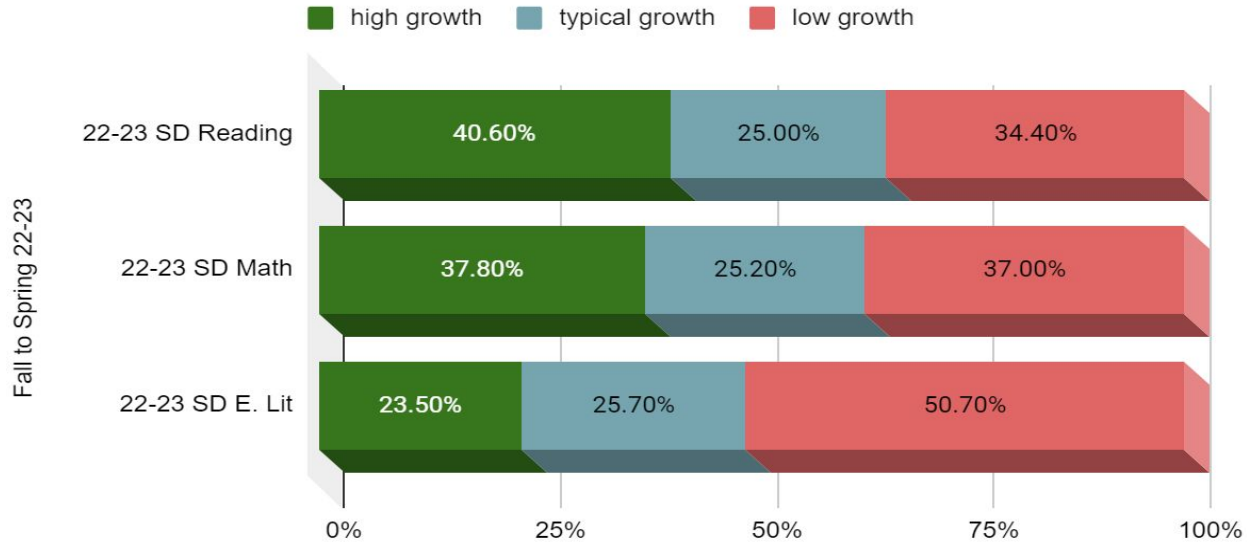


# Scholar Growth Percentile

San Diego

## Scholar Growth Percentile (SGP)

Compass Charter Schools of San Diego

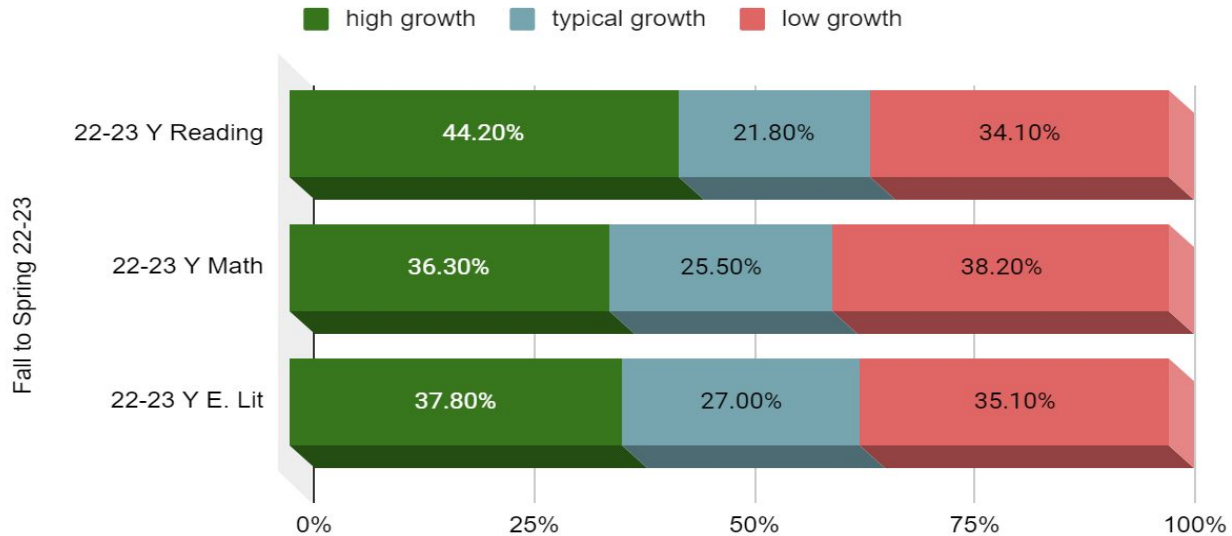


# Scholar Growth Percentile

Yolo



## Scholar Growth Percentile (SGP)

Compass Charter Schools of Yolo







# *Scholar Growth Percentile*



An SGP of 50 can be thought of as typical growth for a student, given his/her grade and prior score history; however, state and local policy makers may define typical growth as a less precise range, such as 35 to 65 or 40 to 60 SGP.



# *Proficiency by Grade Level*

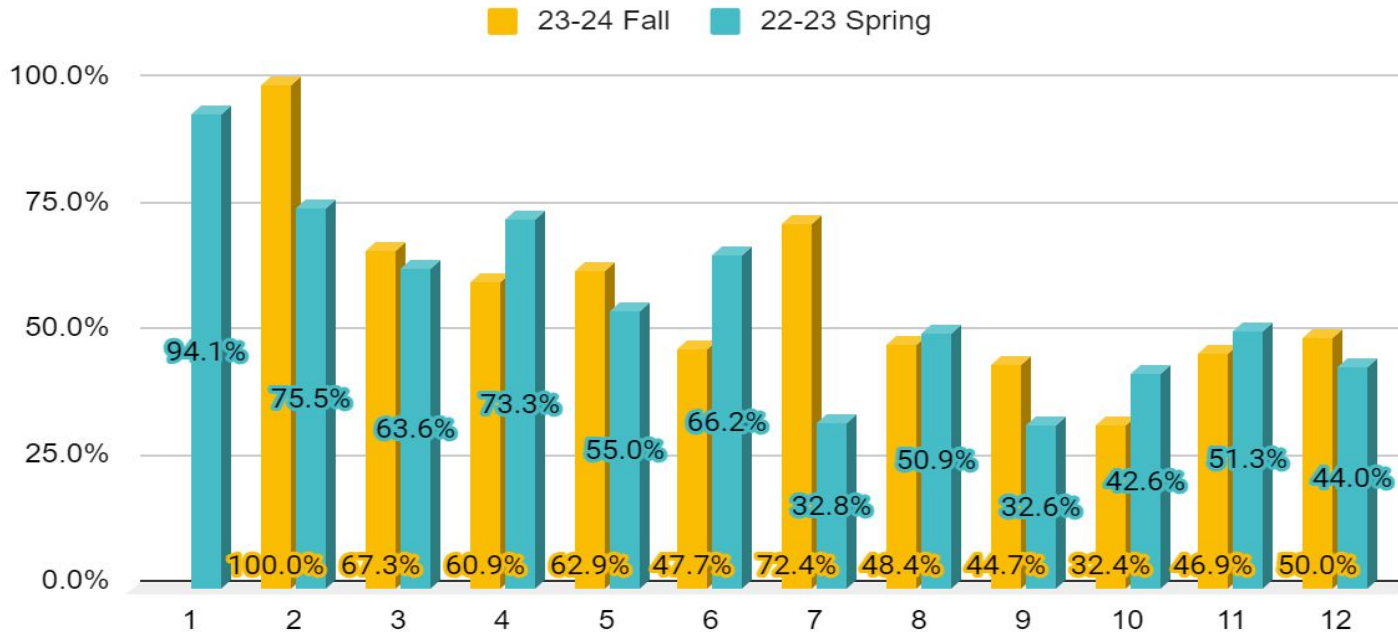


# Reading

San Diego

## Proficiency by Grade Level - Reading

Compass Charter Schools of San Diego

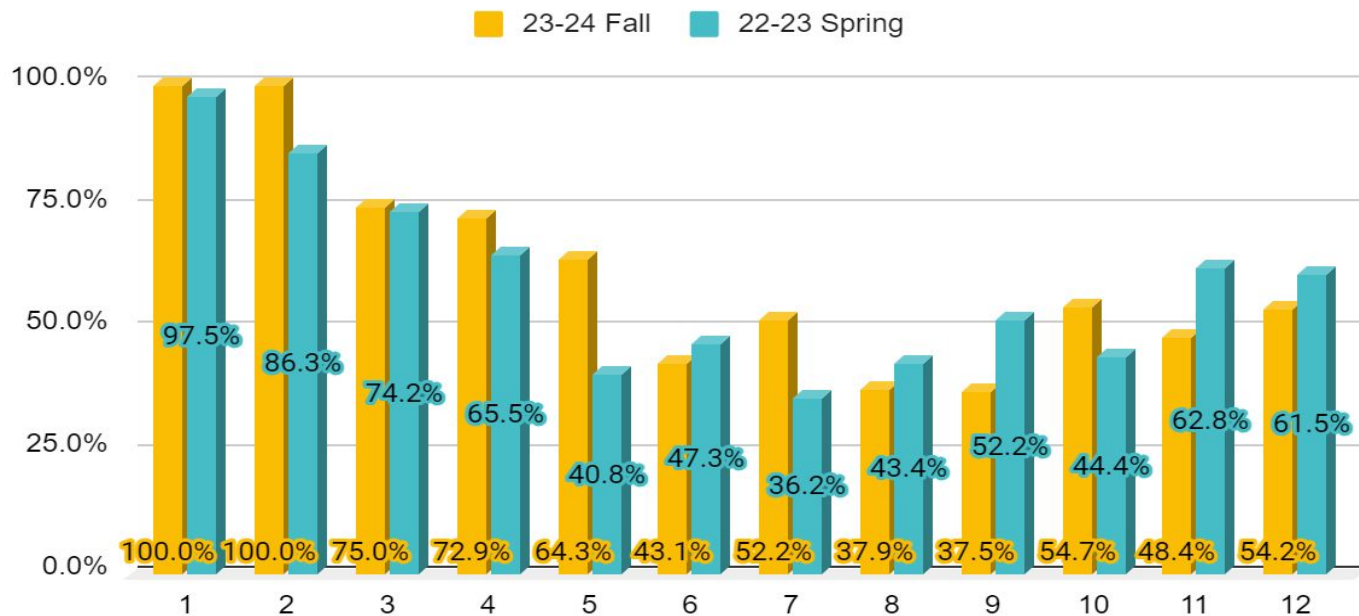


# Reading

Los Angeles

## Proficiency by Grade Level - Reading

Compass Charter Schools of Los Angeles

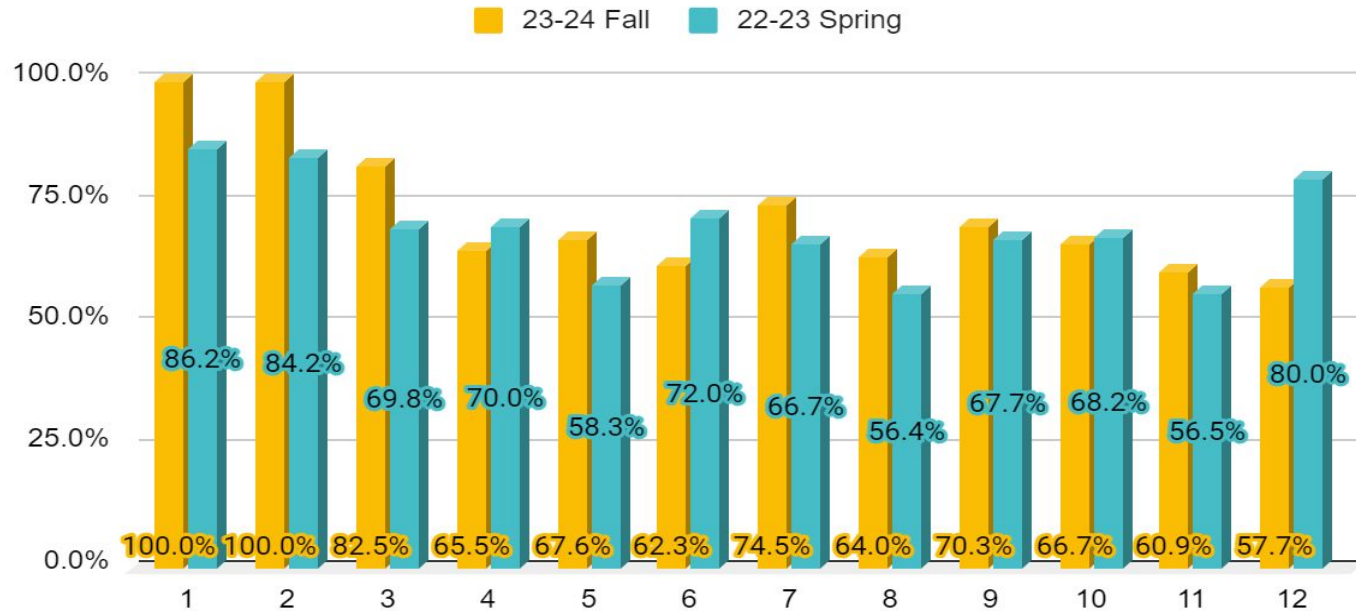


# Reading

Yolo

## Proficiency by Grade Level - Reading

Compass Charter Schools of Yolo



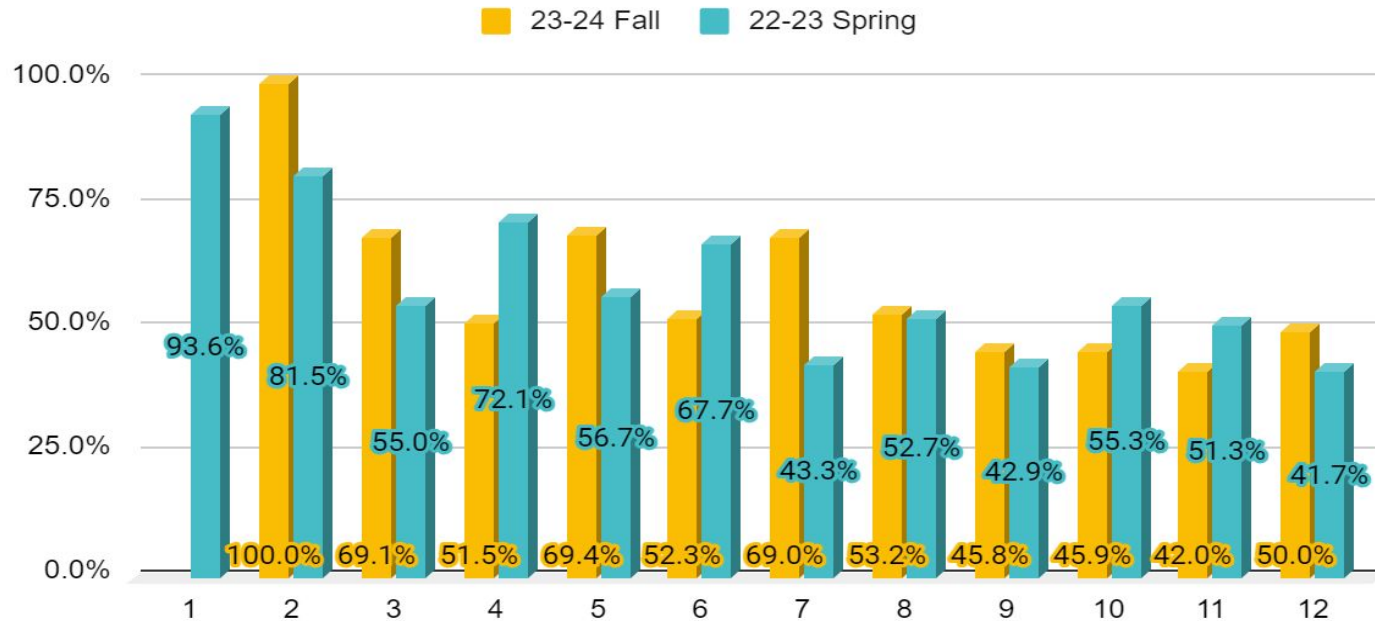


# Math

San Diego

## Proficiency by Grade Level - Math

Compass Charter Schools of San Diego

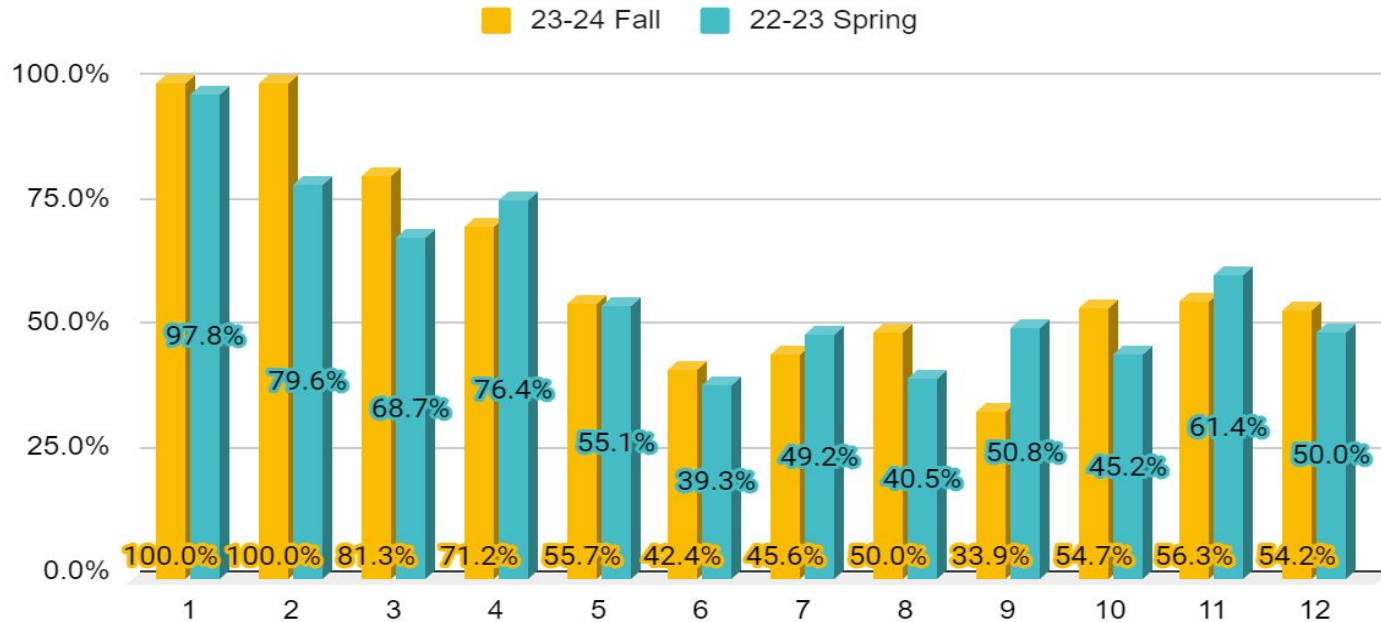


# Math

Los Angeles

## Proficiency by Grade Level - Math

Compass Charter Schools of Los Angeles

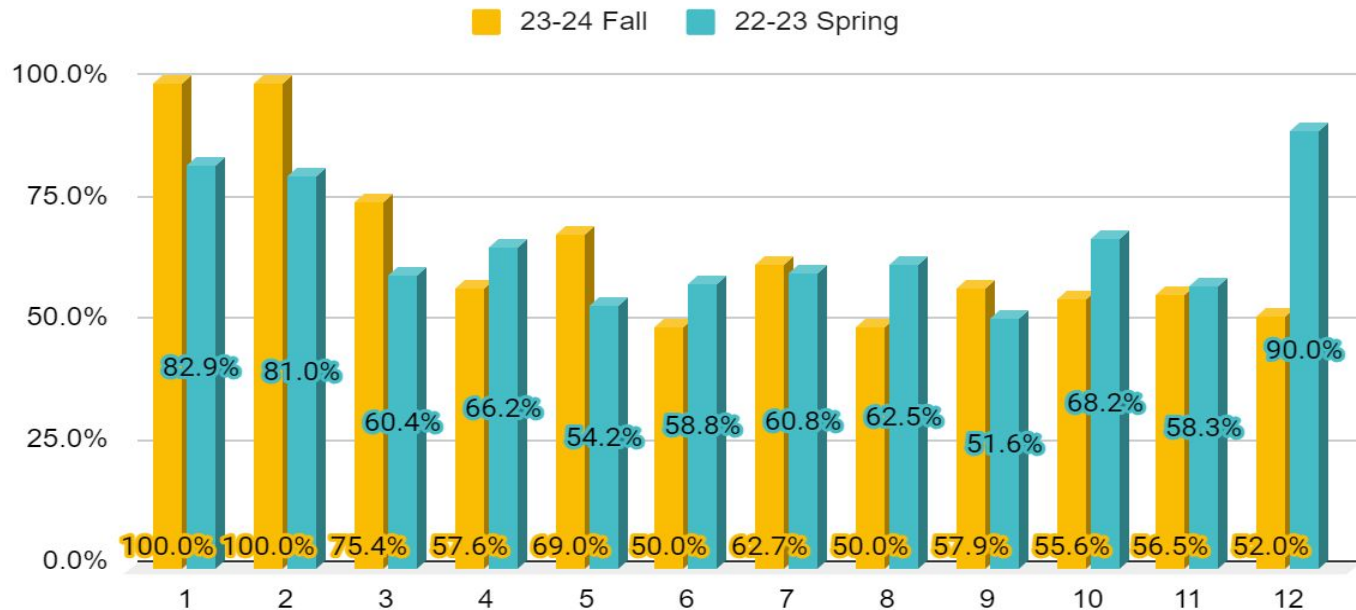


# Math

Yolo

## Proficiency by Grade Level - Math

Compass Charter Schools of Yolo



# ***Improved School Culture***



# *Progress of PL*

## ★ Trust and Inspire

- Leadership Academy- Meetings in September and October
- Trust and Inspire PL opportunities at in-service days- March
- Trust surveys quarterly- October 25, 2023

## ★ Restorative Justice

- Staff Trained as trainers- Cohort has started
- Goal to train all staff
- Implement Restorative Justice practices

## ★ SDI

- Continue learning in department groups- Debra has facilitated several sessions with departments, including Cabinet. She also facilitated the All Staff PL. 90% of staff have completed the SDI.

## ★ Quarterly Data Meetings- October 25, 2023

- Discuss scholar achievement data- November Leadership Meetings
- Measure the impact of interventions

# *Superintendent's Goal 1*



Overall, trust enhances employee satisfaction and engagement, and fosters a positive and supportive work environment at Compass.

## Poll Question

How true is this statement for you right now?

1-Not true at all

5-Somewhat True

10-Always True



# Superintendent's Goal 1

Goal: 100% of staff will select 7 or higher on a 10 point scale.

Percentage of staff who chose 7 or higher

8/01/2023	70%	144 responses
8/04/2023	82%	120 responses
10/25/2023	50%	122 responses
2/28/ 2023		
5/22/2023		

# *Next Steps*



LCAP mid-year report-January, 27, 2024