

COMPASS
CHARTER SCHOOLS

FRAMEWORK

FOR THE **FUTURE**





Table of Contents

- 3 Scholar Profile Graphic**
- 4 Mission, Vision, Values**
- 5 Scholar Profile**
 - 6** Community Leader
 - 7** Effective Collaborator
 - 8** Confident Learner
 - 9** Innovator
- 10 Learning Experiences**
- 11 Enabling Conditions**
- 12 Blueprint for Success**



Scholar Profile



Mission, Vision, Values

OUR MISSION:

Our mission is to inspire and develop innovative, creative, self-directed learners, one scholar at a time.

OUR VISION:

Is to create a collaborative virtual learning community, inspiring scholars to appreciate the ways in which arts and sciences nurture a curiosity for life-long learning, and prepare scholars to take responsibility for their future success.



CORE VALUES:

Achievement

Focus: We take our goals seriously and put in the work required.

Success: We strive for growth and mastery. We aren't satisfied with mediocre.

Ambition: We challenge ourselves to set rigorous, yet realistic goals and accomplish them.

Respect

Value: We recognize the strengths and contributions each individual brings to our work.

Grace: We assume the best and gather more information to better understand.

Autonomy: We give people space to be experts in their craft.

Teamwork

Support: We make time to help each other get things done and solve problems.

Collaboration: We pull one another in to innovate and develop effective tools.

Accountability: We do our part to move the team towards our collective goals.

Integrity

Reflection: We pause to consider how our actions and mindset impact the work.

Ownership: We take responsibility for harm done or issues that arise based on our actions.

Honesty: We care enough to communicate feedback to help each other grow.

Communication

Listening: We seek to understand one another and approach conflict with an open mind.

Self-Monitoring: We are thoughtful about the tone, delivery and content of our messages.

Responsiveness: We keep each other in the loop and give people what they need to get things done.





Scholar Profile

The Compass Profile defines the aspirational, whole-learner outcomes, centered on attending to the social, emotional, cognitive, and mental health needs of all Scholars.





Community Leader



**I understand that I am a member
of a global society and feel a sense
of responsibility to make a contribution
both at the local level and in the
wider world.**

- I describe my role and demonstrate respect.
- I participate in opportunities to impact the community.
- I evaluate decisions and actions.
- I demonstrate safe, legal, ethical behavior.





Effective Collaborator



I participate in collaborative forums, to build understanding of concepts and to complete authentic tasks; communicating effectively (using active listening, striving to understand others, and seeking to be understood), thereby creating a safe environment in which everyone feels valued and inspired to achieve a common goal.

- I contribute in such a way to support a common goal and hold myself and others accountable.
- I exchange ideas and generate questions and ideas to solve problems.
- I share responsibility.





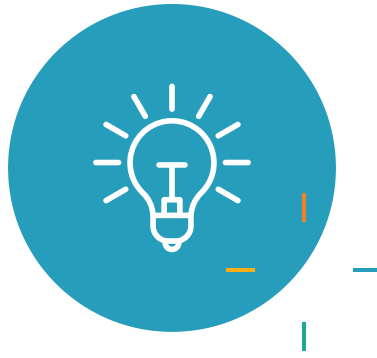
Confident Learner



**I strive to be my best self
and recognize my purpose and value
both in and outside of school;
thinking critically and skillfully to
evaluate data and information as a
guide to my beliefs and action.**

- I set personal learning goals.
- I am confident and independent enough to make my own choices based on sense of self and desired goals.
- I use a growth mindset to embrace new learning, take risks and leverage mistakes to grow.





Innovator



I seek to create something new and better in service of achieving my goals; synthesizing information and exploring multiple perspectives to find creative and realistic solutions.

- I think critically to solve problems.
- I responsibly take risks to move theory to action.
- I use creativity to create something new and better.





Learning Experiences

EDUCATOR COMPETENCIES

Personalized

Learning is tailored to each scholar's unique strengths, skills, interests and needs.

- Develop scholars' metacognition, self-regulation and perseverance.
- Amplify scholar voice.
- Customize the learning experience.

Competency-Based

Evidence-based instruction, assessment and feedback drive learning based on progress toward desired knowledge, skills and habits.

- Use assessment and data as tools for learning.
- Employ a mastery approach to learning.
- Leverage performance-based assessments.

Authentic

Learning is meaningful, relevant learning ground in real-world challenges and applications for authentic audiences.

- Design real-world learning experiences.
- Promote anytime/anywhere learning.
- Spark collaboration.

Inclusive & Equitable

Collaborative and culturally-relevant learning communities empower every scholar to tap into their full academic and social potential.

- Nurture a meaningful and engaging learning community.
- Cultivate a sense of belonging.
- Partner with scholars to reach their full potential.





Enabling Conditions

The conditions that are critical to support the learning experiences that lead to desired learner-centered outcomes.

Coherence

The quality of forming a unified whole:

- Framework for the Future
- Enabling Policies
- Holistic Scholar Outcomes
- Resource Allocation

Culture

The shared values, belief systems, attitudes and the set of assumptions that people in a workplace share:

- Collective Efficacy
- Relational Trust
- Capacity Building

Connectedness

A feeling of belonging to or having affinity with a particular person or group:

- Digital Ecosystem
- Use of Time and Space
- Family and Community Partnerships



Blueprint for Success

OUR VISION:

Is to create a collaborative virtual learning community, inspiring scholars to appreciate the ways in which arts and sciences nurture a curiosity for life-long learning, and prepare scholars to take responsibility for their future success.

SCHOLAR OUTCOMES:

Innovator, Effective Collaborator, Confident Learner, Community Leader

WIG #1:

100% of staff will report increased coherence, improved culture and greater connectedness by the end of the 2022-2023 school year.

Strategic Plan Goals

- Build trusting relationships and a culture of collaboration, innovation, and ongoing learning.
- Provide equitable support for all scholars by leveraging the full Compass community to advance each individual scholars' academic and social emotional progress.
- Position Compass to meet the growing demand for personalized virtual learning while proactively adapting to political changes.
- Become a recognized leader in personalized virtual learning within California and across the U.S.

WIG #2:

100% of eligible scholars will graduate by the end of the 2022-2023 school year.

Learning Experiences

- **Inclusive & Equitable**
Learning communities are collaborative and culturally relevant, where every scholar feels they belong and can tap into their full academic and social potential, contributing to the collective success of their community.
- **Authentic Learning**
Meaningful, relevant learning grounded in real-world challenges and applications for authentic audiences.
- **Competency-based**
Learning is driven by evidence-based instruction, assessment, and feedback cycle based on progress toward desired knowledge, skills and dispositions.
- **Personalized**
Learning is co-constructed based on each scholar's unique strengths, skills interests and needs.

Core Values: Achievement, Respect, Teamwork, Integrity, Communication

Enabling Conditions: Coherence, Culture, Connectedness

LCAP: (fiscal and physical measurement)

Our Mission:

Is to inspire and develop innovative, creative, self-directed learners, one scholar at a time





DESIGNED IN
COLLABORATION WITH:



MAY/2022

