



Counseling Services Annual Report 2021-2022

This report summarizes the comprehensive school counseling services that has been provided at Compass Charter Schools during the 2021-2022 school year. For scholars to achieve academic and social success it is imperative that they learn skills to enhance their problem solving, decision making, social interactions and find success with positive academic outcomes. Our role supports the Compass mission, vision, values and wildly important goals to meet the needs of our diverse population one scholar at a time.

Counseling Services at a Glance

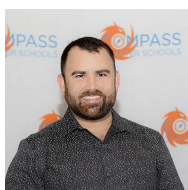
Grade Levels: 6-12
Scholars Directly Supported: 1741
Division: Academic Services
School Year: 2021-2022



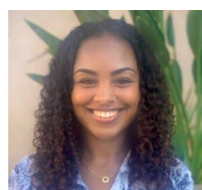
Mrs. Debra Stephan
Director of Counseling Services



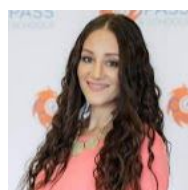
Mrs. Gabriela Ayala
School Counselor



Mr. Jacob Samples
School Counselor



Ms. Jarae Page
School Counselor



Mrs. Mandi Schwartzberg
School Counselor



Ms. Michelle Bateman
School Counselor



Ms. Mataya Olson
College Career Readiness Counselor

Counseling by the Numbers

3,982
Total Direct Scholar Sessions

2,062 (52%)
Total Direct Sessions with High School Scholars

312 (8%)
Direct Sessions with Elementary Scholar Population

1,608 (40%)
Total Direct Sessions with Middle School Scholars

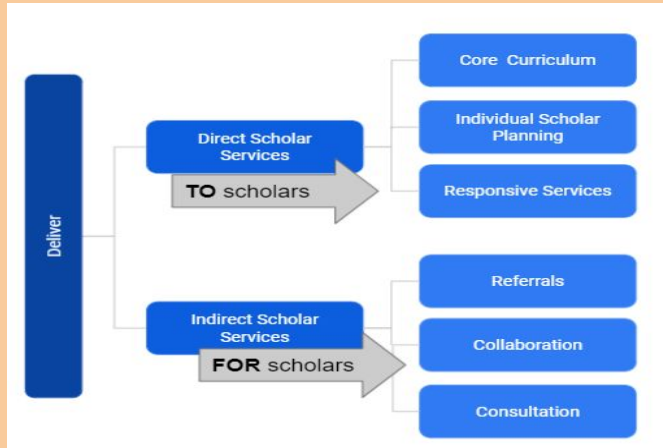
135
Scholars Served Directly with Short-term Individual Counseling Sessions

Scholar Participation (Attendance)
Weekly Small Groups (T-TH)
Firebird Fun
183 (4th/5th)
Morning Starter
793 (6th-8th)
Ready to Launch
632 (9th-12th)

49
Curriculum Lessons Delivered
Middle School: **29** Lessons
508 Participation Attendance High School: **20** Lessons
289 Scholar Participation (Attendance)



Time Task Analysis



School Counselor Use of Time Direct and Indirect Scholar Services

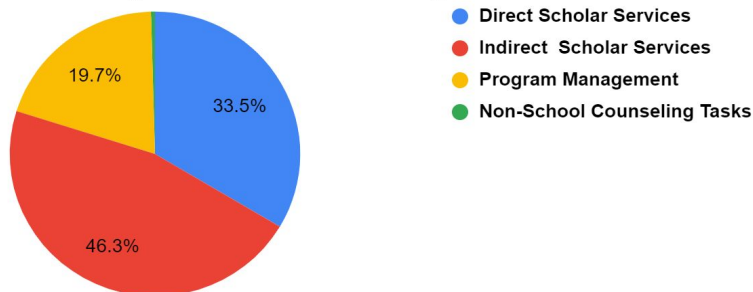
Target: 80%
Actual: 80%

Direct/Indirect Services

Breakdown of division of time during the 2021-2022 school year logged daily with counseling sessions logs



Counseling Services Time Task Analysis 2021/2022



Direct Services	Counseling Services
Instruction	49
Appraisal & Advisement (AA)	921
Counseling (C)	443
Indirect Services	Counseling Services
Referrals (Ref)	21
Consultation (Con)	295
Collaboration (Col)	262
Attempted Contact	769

Multi-Tiered, Multi-Domain System of Supports for School Counselors



2021/2022 Scholar Matrix Risk Level Assessments
Grades 6th-12th

Structured review for all scholars in caseload to determine risk level and identify academic, social emotional and college career readiness action plans

Risk Level 3

3%

Risk Level 2

8%

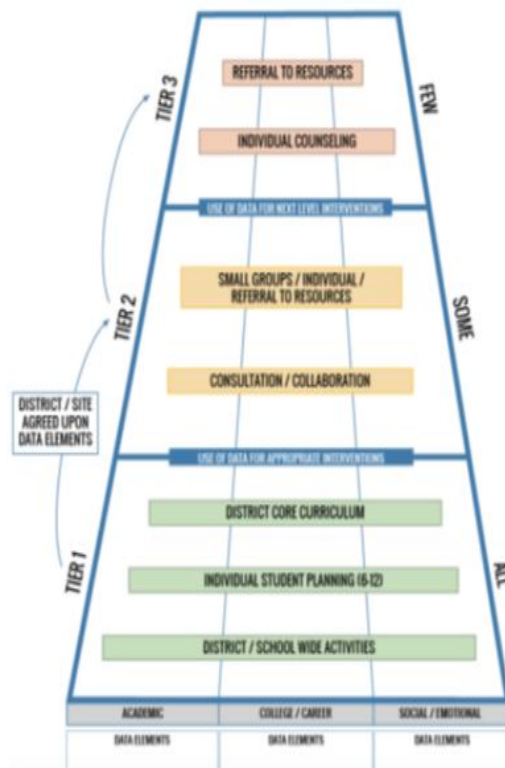
Risk Level 1

89%

COMPASS
CHARTER SCHOOLS

THE GOLD STANDARD
IN

Accelerated Course Options Program (ACOP)
135 Scholars
163 Courses
85% Pass Rate



1:1 Recurring
Weekly/Bi-weekly/Monthly
Counselor to Scholar
575 Sessions
61 Scholars

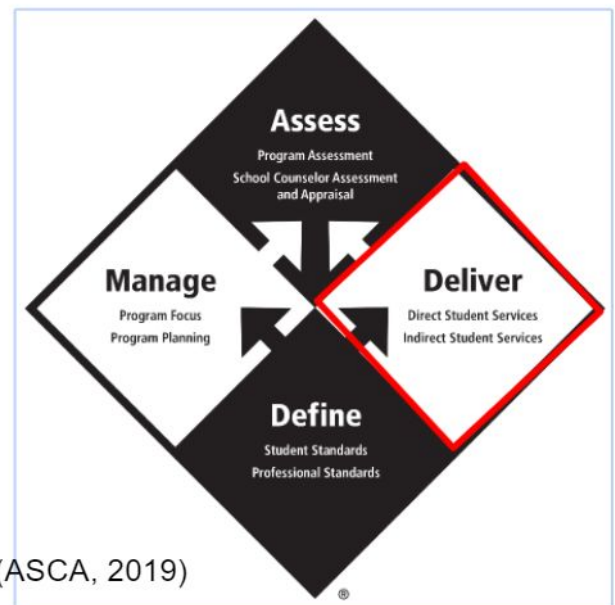
Concurrent Enrollment
Scholar Enrollments 87
College Courses 140



2020/2021 Counseling Core Curriculum

2020/21 Curriculum			
Date	Level	Topic	Lesson Plan
SEP	HS	ACADEMIC	9th & 10th Grade Counseling Presentation
SEP	HS	SEL	11th & 12th Grade Counseling Presentation
SEP	MS	SEL	Cookies with Counselors (MS)
OCT	HS	SEL	Growth Mindset HS
OCT	MS	SEL	Growth Mindset MS
OCT	MS	ACADEMIC	S.M.A.R.T. Goal Setting MS
OCT	MS	SEL	My Multi-Cultural Self MS
OCT	HS	CCR	CCS Cafe: Virtual College Tour UCSB
OCT	MS	CCR	CCS Cafe: Interests
NOV	MS	SEL	My Multi-Cultural Self HS
NOV	MS	SEL	Mindfulness MS
NOV	MS	CCR	CCS Cafe: Values
NOV	HS	CCR	CCS Cafe: Virtual College Tours
DEC	HS	SEL	Emotions MS
DEC	MS	SEL	Emotions & Stress HS
DEC	MS	SEL	True Colors Personality Assessment
DEC	HS	CCR	CCS Cafe: Virtual College Tours
DEC	MS	CCR	CCS Cafe: Strengths
JAN	HS	SEL	Assertive Communication (Setting Boundaries)
JAN	MS	SEL	Self-Care MS
JAN	MS	SEL	Friendship 101
JAN	MS	SEL	Great Kindness Challenge MS
JAN	HS	CCR	CCS Cafe: Woodbury University
JAN		CCR	CCS Cafe: What's In Your Future
FEB	HS	SEL	Compassion & Diversity HS
FEB	MS	SEL	Compassion MS (add Diversity)
FEB	MS	ACADEMIC	Let's Get Organized MS
FEB	MS	SEL	Diversity & Inclusion MS
FEB	HS	CCR	Holland Party HS
FEB	MS	CCR	Holland Party MS
MAR	HS	SEL	March to Motivation HS
MAR	MS	SEL	SEL: We All Make Mistakes MS
MAR	MS	SEL	March to Motivation MS
MAR	MS	SEL	Moving Up Transition Presentations MS
MAR	MS	ACADEMIC	Course Planning & Selecting Classes MS
MAR	HS	ACADEMIC	Course Planning & Selecting Classes HS
MAR	HS	SEL	Moving Up Transition Presentations HS
MAR	MS	CCR	CCS Cafe: The Great College Mystery

2020/21 Curriculum			
Date	Level	Topic	Lesson Plan
APR	HS	SEL	Building Confidence HS
APR	MS	SEL	Building Confidence MS
APR	MS	SEL	Child Abuse Prevention Education
APR	HS	CCR	Washington & Jefferson College Visit
APR	MS	CCR	College Mania
MAY	HS	ACADEMIC	Decision Day
MAY	HS	SEL	Coping Personal Tool Box HS
MAY	MS	SEL	Coping Personal Tool Box MS
MAY	HS	SEL	Help I'm Stressed
MAY	MS	SEL	Values & Decision Making MS
MAY	HS	CCR / ACADEMIC	CCS Cafe: Time's Not Out





College Career Readiness

2021/22 Graduation Rate	86%
3-Yr Cohort	4%
4-Yr Cohort	85%
5-Yr Cohort	9%
AB 104	27%
HiSET/COC	2%
Non Grad Rate	14%
A-G Completion Rate	15%
Awarded Golden State Seal Merit Diploma	37%
College Acceptance Rate (2 & 4 Year)	73%

Graduation rate increased 13% from 2020/21 to 2021/22.

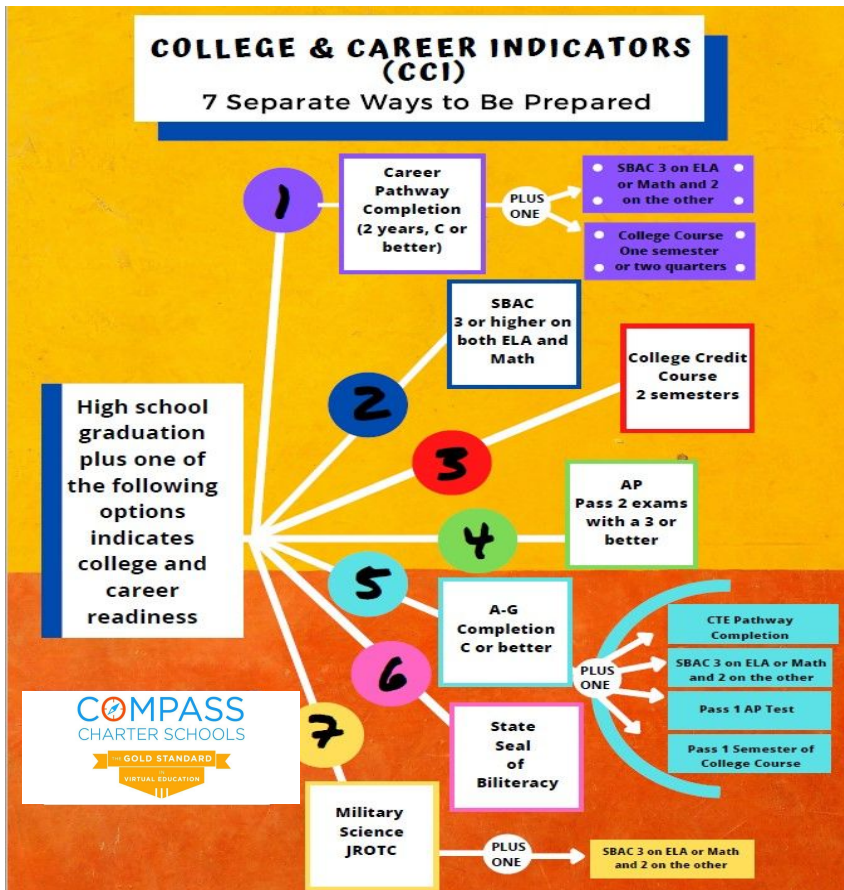
College Career Indicator

18% Prepared

22% Approaching Prepared

60% Not Prepared

College Bound	46%
Undecided	33%
Workforce/Military	11%
Non Grad	10%



CLASS OF 2022

Arizona State University	Palomar College
Bakersfield College	Penn Foster College
California Baptist University	San Diego City College
California State Polytechnic University, Pomona	San Diego Mesa College
Cerritos College	Santa Monica College
Concordia University, Irvine	Santa Rosa Junior College
Copper Mountain College	Solano Community College
Diablo Valley College	Southwestern College
East Los Angeles College	The Juilliard School
Glendale Community College	The New School of Architecture & Design
Institute of Culinary Education	University of California, San Diego
Long Beach City College	Universal Technical Institute
Los Angeles Pierce College	University of California, Berkeley
Mira Costa College	University of Oregon
MIT Professional Education Program	University of San Diego
Moreno Valley College	University of San Francisco
Mt. San Antonio College	Victor Valley College
Northern Arizona University	West Los Angeles College



Wildly Important Goal

WIG: By focusing on scholar engagement, 100% of eligible scholars will graduate by the end of 2020/21 academic school year.

Purpose: To promote open communication between counseling team members in order to better facilitate services for scholars and their families; to ensure consistency in implementation of organization policies and processes.

By focusing on scholar engagement, 100% of eligible scholars will graduate by the end of 2021-2022 academic school year.									
Great Place to Learn	Great Place to Work	Great Systems for Efficiency & Effectiveness	Scoring	December 13, 2021	January 24, 2022	March 7, 2022	April 4, 2022	May 4, 2022	June 1, 2022
Weekly reporting will monitor Counselors engaging in a minimum of 80% or more direct and indirect scholar services to achieve the most effective delivery of the school counseling program for all scholars served.			Green-80% and above Yellow-60-79% Orange-50-59% Blue - below 49%	79%	81%	81%	81%	80%	80%
Biweekly reporting will show an ongoing increase in the number of 6-12th grade scholars being directly impacted by counselors to ensure that by the end of the 21-22 school year 85% or more will have participated in at least one direct counseling service (Instruction, Appraisal & Advisement, Counseling)			Green-85% and above Yellow-66-84% Orange-51-65% Blue - below 50%	33%	39%	44%	49%	53%	55%
Biweekly reporting will show an ongoing increase of seniors being directly impacted by the College Career Readiness Counselor to ensure that by the end of the 21-22 school year 85% or more will have had participated in at least one activity to support post high school plans. (Examples activities: YouScience Assessment, College Application, Concurrent Enrollment Course Completion, Financial Aid Application, Military Enlistment / Recruitment Outreach, Employment Application / Resume Completion)			Green-85% and above Yellow-66-84% Orange-51-65% Blue - below 50%	34%	40%	64%	64%	76%	76%

