



COMPASS
CHARTER SCHOOLS



Special Education Department Overview Presentation

(855) 937- 4227

CompassCharters.org

COMPASS
CHARTER SCHOOLS



Agenda

- Department
- Duties
- IEPs
- Services
- Eligibilities
- Providers and Breakdown of Services
- Online Programs
- Q & A





Our Mission and Vision

MISSION STATEMENT

Our mission is to inspire and develop innovative, creative, self-directed learners, one scholar at a time.

VISION STATEMENT

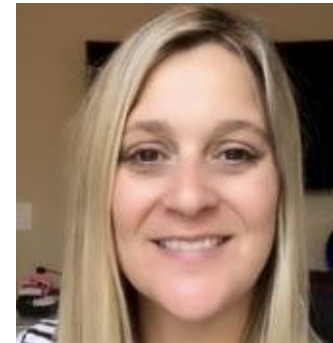
Our vision is to create a collaborative virtual learning community, inspiring scholars to appreciate the ways in which arts and sciences nurture a curiosity for life-long learning, and prepare scholars to take responsibility for their future success.



Special Education Team Leadership



Lauren Jeffries
Special Education Coordinator/Acting
Co-Director



Leslie Sharma
Special Education
Coordinator/Acting Co-Director



Special Education Team

Education Specialists



Amber
Tunget



Andrea McCormick



Elise D'Agostine



Rebecca
McFarlane



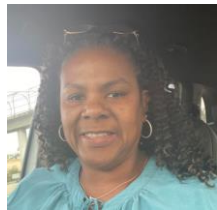
Kim Miles



Lynn Jabuka



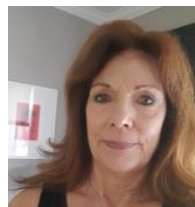
Reilly
Zaloom



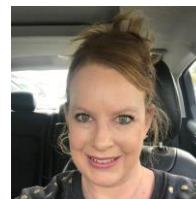
LaTonya Thomas



Siobhann
Shore



Susan Barry



Tracy Clifton



Tamitha
Alcalá

PHOTO
COMING
SOON!

Jill
Missner

PHOTO
COMING
SOON!

Stacy
Freeland



Special Education Team Instructional Aides



Jessica White



Linda Hernandez Quintana



Special Education Team Technician



Tami Zacarro
Special Education Technician



What is an IEP?

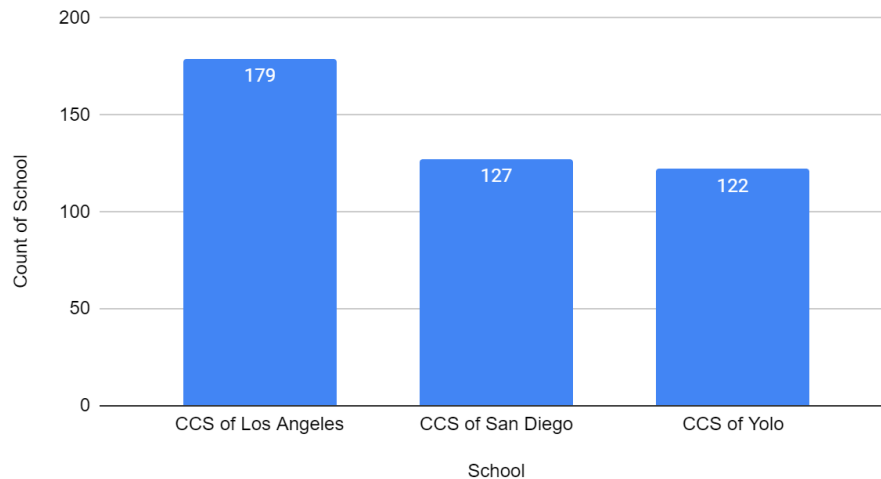
- IEP is an acronym for Individualized Education Program, or Plan. It is a blueprint or plan for a child's special education experience at school. It provides individualized special education and related services to meet a child's unique needs. These services are provided at no cost to families.
- The Individuals with Disabilities Education Act (IDEA) dictates this plan.
- This is a federal special education law for children with disabilities. A child has one or more of the 13 disabilities listed in IDEA. The law lists specific challenges, like learning disabilities, ADHD, autism, and others. The disability must affect the child's educational performance and/or ability to learn and benefit from the general education curriculum. The child must need specialized instruction to make progress in school.



IEPs

The Special Education Department continues to grow! We are currently serving 428 scholars with IEPs across the three (3) different charters.

Count by School





A Day in the Life of a Special Education Teacher





Education Specialist Duties

- Schedule and Plan SAI sessions
- Teach SAI sessions
- Write IEPs
- Schedule and hold IEPs
- Manage providers
- Collect and gather data
- Update information in SEIS and SIS





Responsibilities to Scholars

IEP

- Keep a calendar of IEP meetings and due dates
- Monitor delivery of special education and related services
- Review progress on goals
- Prepare materials for annual review
- Gather data to show evidence of scholar's progress
- Establish baselines for new goals

MONITOR AND DOCUMENT

- Monitor progress in general education classes
- Establish a system for having weekly contacts for scholars who are monitor only
- Monitor in collaboration with counselor, credit required for graduation, promotions and credit recovery



Responsibilities to General Education Teachers

- Advise general education teachers of scholar needs, accommodations and modifications
- Assist with needed accommodations
- Communicate supports that are available for scholars, including study skills
- Establish a system for contacting general education teachers to monitor scholar progress
- Encourage general education teachers to contact case managers for assistance



Responsibilities to Parents

- At the beginning of the school year, connect with parents and scholars
- Provide contact information
- Explain their role as Education Specialist
- Describe the contact they will have the general education teachers
- Define scholar' responsibilities
- Request assistance in areas of need
- Inform about progress towards meeting goals
- Log all phone calls or contacts
- Ongoing collaboration with parents in supporting scholars



Services

- Specialized Academic Instruction (SAI)
- Adapted Physical Education (APE)
- Speech-Language Therapy
- Occupational Therapy (OT)
- Physical Therapy (PT)
- Assistive Technology (AT)
- Counseling/Mental Health
- And more!

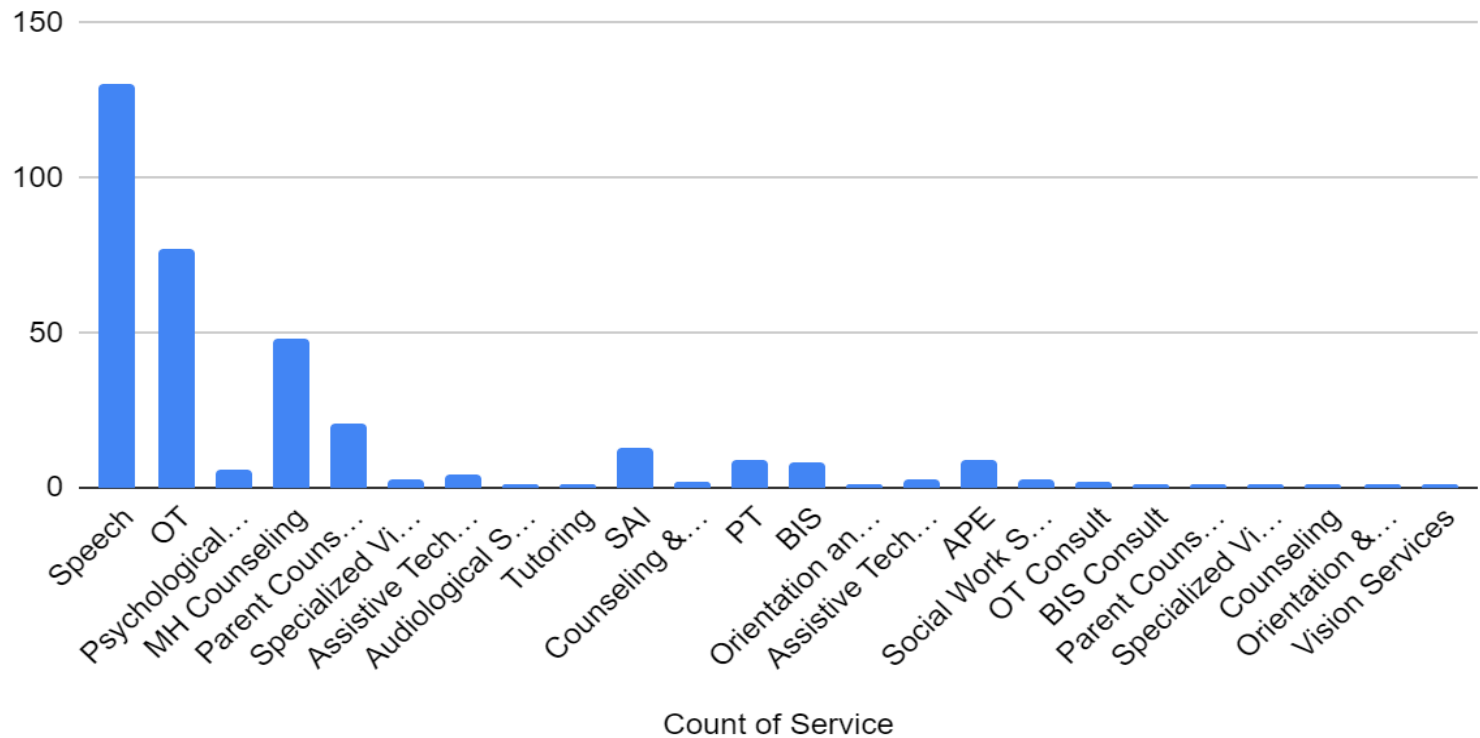


** We try to provide services online, as we are a virtual school. **



Distribution of Services

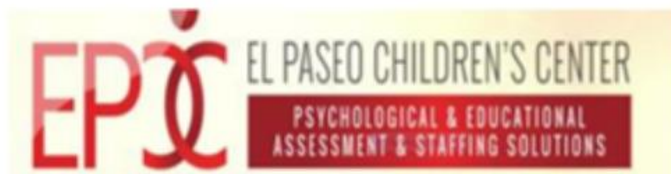
Count of Service





Our Providers

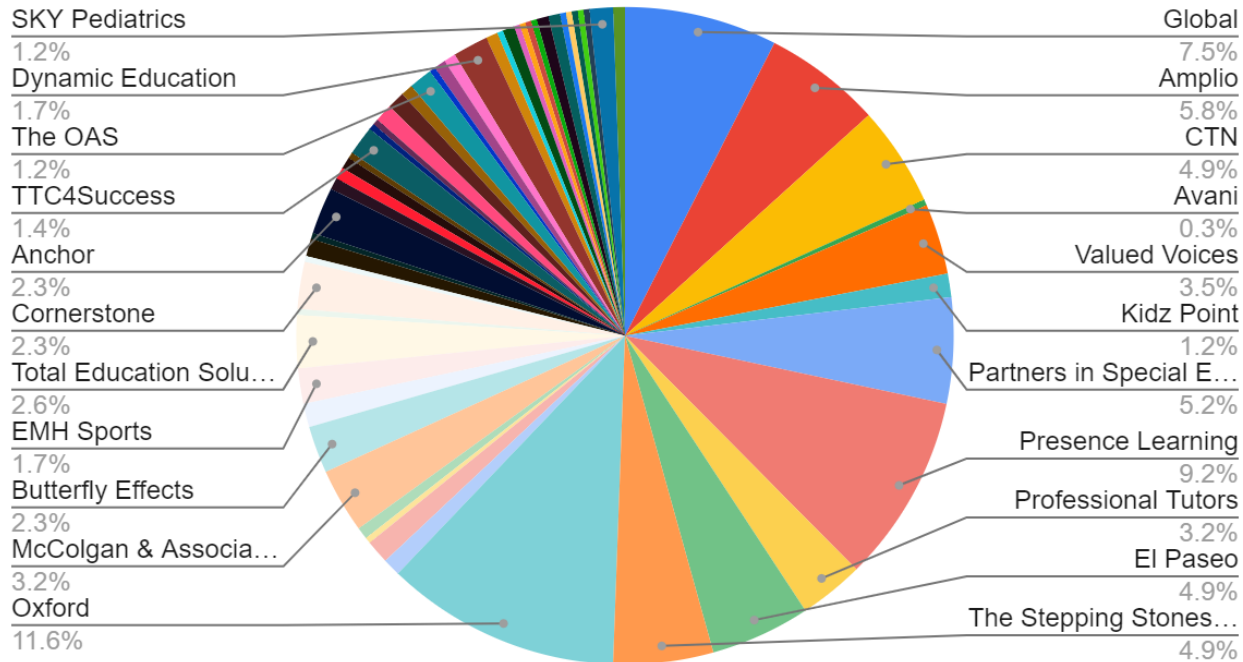
As our school has grown, our network of providers has continued to grow with it to support our scholars across the state:





Service Providers

Count





Our Special Education Programs



Ascend Math is personalized online math instruction that provides each scholar with a unique study path through skill gaps at each level. Individual study plans are prescriptive, adaptive, and automatically assigned.



Our Special Education Programs



The Read Naturally Strategy combines the three powerful, research-proven reading intervention strategies to create an effective tool that individualizes instruction and improves reading proficiency. Using audio support and tracking their progress, scholars work with high-interest material at their skill level to improve fluency, vocabulary, and comprehension.



Our Special Education Programs



MAXSCHOLAR
Reading Intervention Programs

MaxScholar is a comprehensive and **multi sensory** bundle of phonics and **reading programs**. We use different research-based methods that help students improve their **reading skills**, language and performance scores.



Questions?



Contact:

Lauren Jeffries | Acting Co-Director

ljeffries@compasscharters.org

Leslie Sharma | Acting Co-Director

(805) 405-2893

lsharma@compasscharters.org