



**COMPASS**  
CHARTER SCHOOLS



# Online Learning Department Overview Presentation

**(855) 937- 4227**

**CompassCharters.org**

**COMPASS**  
CHARTER SCHOOLS



# Agenda

- Mission and Vision
- Values
- Online Learning Department
- Online Learning Overview
- Supervising Teacher
- Learning Coach
- Connection Meetings
- Personalized Learning Plan



# Agenda

- Online Learning Program Instruction
- Scholar Success Support
- A-G Assessment Proctoring
- AB130 Impacts
- Questions



# **Our Mission and Vision**

## **MISSION STATEMENT**

Our mission is to inspire and develop innovative, creative, self-directed learners, one scholar at a time.

## **VISION STATEMENT**

Our vision is to create a collaborative virtual learning community, inspiring scholars to appreciate the ways in which arts and sciences nurture a curiosity for life-long learning, and prepare scholars to take responsibility for their future success.



# Our Values

## COMPASS CHARTERS

- A**chievement: Engage in and take charge of your learning.
- R**espect: Be respectful in all interactions with fellow scholars, learning coaches, faculty, and staff.
- T**eamwork: Work cooperatively with all persons involved in your education. \*Teamwork makes the Dreamwork\*
- I**ntegrity: Behave following strong ethical principles, values, and academic honesty.
- C**ommunication: Frequently and proactively communicate with all persons involved in your education.



# Meet the Online Learning Leadership Team



Jennifer Tatum  
Online K-8 Coordinator



Janae Smith  
Director of Online Learning



Elaine Amari  
Online High School Coordinator



# Online Elementary Learning Team

**Katie Hooper**



**Kim Love**



**Crystal Chavez**



**Joyce Popelar**



**Kari Watt**



**Michelle Fullerton**



**Monique Grimes**



**Sarah Eagleton**





# Online Middle School Learning Team

**Andrea Lomeli**



**Carrie Talcott**



**Erin Thomson**



**Kim Noller**



**Beth Foster**



**Erica Angelo**

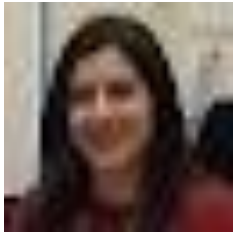






# Online High School Learning Team

**Rouba Smith**



**Kristen Winter**



**Kim Myers**



**Ashley Fletcher**



**Lynn Woodley**



**Adam Ramirez**



**Shannon Davis**



**Alex Vazquez**



**Jen Hobson**



**Terry El Massry**



**Rosette Sowell**



**Sharon Rosen**





## Online Program

Curious about the *online curriculum*? Check out [these videos](#) and our course catalogs below.




Grade: [K-5](#) [6-8](#) [9-12](#)



Ready to learn online? Complete our [Online Learner Readiness Rubric](#) to check your Scholar Readiness Score!

(Please note – this rubric was not designed to be used as a tool to determine eligibility for enrollment, but instead to be used as a resource to help identify specific areas where scholars may need additional supports to better ensure success.)

We are an **AVID** school! Click [HERE](#) to find out more!

 Live Learning Labs offered once a week per subject! Learn more [HERE!](#)



Check out these *Compass Charter Schools* blogs!

- [5 Benefits of Online Education](#)
- [Advice for the First-Time Online Learner](#)
- [4 Most Commonly Asked Questions for Online Education](#)
- [What Sets CCS Online Program Above and Beyond?](#)



*Important Resources:*

[Academic Calendar](#)  
[Online Scholar Handbook](#)



# Role of the Supervising Teacher

We are here to support the teaching parent!

- Works with scholars and learning coaches to create goals for the school year
- Schedules monthly meetings with families to discuss academic progress and goals
- Support with curriculum
- Review academic progress
- Maintain scholar records
- Review for compliance





# Learning Coach (LC) Expectations

- Regular Connection meetings with the Supervising Teacher (ST)
  - Online: Monthly
- Read the Scholar Handbook with their scholar, which can be found on our [website](#)
- Communicate with teachers and counselors
- Work with scholar to create a daily/weekly schedule, including all Learning Labs
- Create an organized and distraction-free learning space





# Connection Meetings

A foundation of personalized learning

- Monthly, virtual meetings with the ST, LC, and scholar
- Important discussions focused on the scholar
- Relationship building
- Course progress, strengths, and areas for growth
- Update the Personalized Learning Plan (PLP)
- Open opportunity for more frequent 1:1 support





# Online Personalized Learning Plan

A tool for tracking scholar learning and academic progress.

<b>Counselor Name (if grades 6-12) :</b>	<input type="text"/>
<b>Grade-Level Coordinator:</b>	<input type="text"/>
<b>Counselor Virtual Office:</b>	<a href="#">Click HERE</a>


  

Scholar Name:		Scholar Name:	
Grade Level:		Grade Level:	
Learning Style:		Learning Style:	
Learning Environment:	(i.e. kitchen, living room, park, office, outdoor, etc...)	Learning Environment :	
Learning Material Preferences:	(i.e. textbook/workbook, worksheets, online, DVD, projects, novels, podcast, etc..)	Learning Material Preferences:	
Interests/Hobbies:		Interests/Hobbies:	
Benchmark Reading (Fall):	(Score)	Benchmark Reading (Fall):	(Score)
Benchmark Reading (Mid Year):	(Score)	Benchmark Reading (Mid Year):	(Score)
Benchmark Reading (Year End):	(Score)	Benchmark Reading (Year End):	(Score)
Benchmark Math (Fall):	(Score)	Benchmark Math (Fall):	(Score)
Benchmark Math (Mid Year):	(Score)	Benchmark Math (Mid Year):	(Score)
Benchmark Math (Year End):	(Score)	Benchmark Math (Year End):	(Score)
Case Manager:	(If Applicable)	Case Manager:	(If Applicable)
Accommodations/Modifications	(If Applicable)	Accommodations/Modifications	(If Applicable)



# Online Personalized Learning Plan

A tool for tracking scholar learning and academic progress.

	<b>Resources &amp; Links</b>		
	<i>2021-22 Academic Calendar</i>		
	<a href="#">CCS Website</a>	<a href="#">CCS Parents &amp; Scholars</a>	<a href="#">Online Scholar Handbook</a>
	<b>Resources Pages/Go To Guides</b>		
	<a href="#">Middle School Website</a>	<a href="#">Middle School Learning Lab Schedule</a>	
	<a href="#">K-5 Website</a>	<a href="#">K-5 Learning Lab Schedule</a>	
	<b>Attendance</b>		
	<a href="#">CCS Los Angeles</a>	<a href="#">CCS San Diego</a>	<a href="#">CCS Yolo</a>
	<b>Other Important Links</b>		
	<a href="#">STAR Diagnostic Assessment</a>	<a href="#">Field Trips &amp; Events - Parent Square</a>	<a href="#">ZOH0 Technology Help Desk</a>



# Online Learning Program Instruction



- Accelerate Education curriculum for K-12 for asynchronous learning
- In addition, grades K-5 use the following supplemental materials:
  - Accelerate Education workbooks for extra practice
  - Lakeshore Reading Kits for additional reading lessons and support
  - 4th and 5th grade novel selections
- Learning Labs (LL) by core content subject
  - LLs use research-based strategies, such as AVID, to support instruction and increase scholar engagement and success

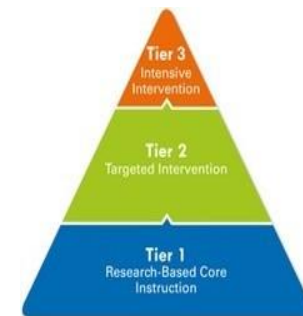




# Online Scholar Success Support

## Tier 1 Support for all scholar groups

- Homeroom Instruction
- Small Group instruction and Q&A Sessions
- AVID and Instructional strategies during learning labs
- Course customization to target personalized learning needs





# Online Scholar Success Support

## Tier 2 & 3 Support

- Support scholar tutoring attendance
- Lexia progress check ins
- Assign work in Freckle
- One on one support provided by the ST and content teacher





# A-g Major Assessment Proctoring

- Midterm exams and semester major assessments that are proctored
- There is a Midterm Week and Finals Week
  - During these scheduled weeks, more proctoring sessions are offered and scholars can take the assessments in the proctor room
- Scholars who need to take a proctored exam outside of those exam weeks reach out to their content and/or supervising teacher to take these exams



# AB 130 Impacts

## **Master Agreement (MA)**

- STs held an initial connection meeting prior to sending the MA

## **Tiered Re-Engagement Strategy**

- Daily learning log: evidence of engagement/attendance
- Trigger: 3+ days or 60% of the school week with no attendance logs or synch. instruction participation
- Course logins and work submissions

## **Connection meetings to target:**

- Course progress and pacing
- Standards Mastery through work completion
- Additional supports to target and personalize scholar learning through instruction and course customization



# AB130 Impacts

## **Synchronous “Homeroom” Instruction**

- Provided by ST/Teacher of Record
  - TK-3: Daily 30 minutes
  - 4-12th: Weekly 30 minutes
  - Participation documented

## **Live Interaction**

- Provided by CCS staff
  - Content specific learning labs
  - Engagement, counseling, tutoring, and SAI
  - TK-3: weekly
  - 4-8: Daily



# AB130 Impacts

## **STAR Internal Diagnostic Assessment**

- Requirement for all scholars
- Math and Reading assessments for all grade levels
- Live ST proctoring
- Three assessment windows
  - Initial - September
  - Benchmark - February
  - Summative - May/June



# Questions?



Contact:

Janae Smith | Director of Online Learning

(805) 407-1448

[jsmith@compasscharters.org](mailto:jsmith@compasscharters.org)

@JSmith\_Compass