



HOS Report to the Board of Trustees

Submitted by Peter Cohen, Ed.D

Meeting Date: July 27, 2021

- **Staffing Updates - New Hires Spring/Summer 2021**
 - 4th Grade Humanities - Jenna DelMastro
 - 5th Grade Math/Science - Mary Buckley
 - 5th Grade Learning Specialist - Brooke Williams
 - 6th Grade Learning Specialist - Melanie DeCeglia Kelleher
 - 6th Grade Inclusion Teacher - Gianni Lara
 - 8th Grade Learning Specialist - Jenny Prag
 - PE/Athletics Coordinator - Tyler Kelleher
 - School Psychologist - Melissa DeLeo
 - School Counselor - Sarah Biltcliffe
 - English Learner Education (ELE) Coordinator - Acadia Mezzofanti
 - Severe Special Needs Special Educator - Susan Irizarry
 - Office Manager - Emily Miner

- **Open Positions**
 - 4th Grade Inclusion Teacher - Open w/ interviews underway
 - 7th Grade Humanities - Open (new hire resignation); interviews underway
 - 8th Grade Inclusion Teacher - Offer Out (Patricia Rietti resignation)
 - Part Time Learning Specialist (candidate under consideration)
 - Facilities (2nd Shift) - nearly 50 applications

- **HR Assessment**
 - HR Knowledge conducted assessment of HR policies & Procedures
 - Gap Analysis Report under review

- **Enrollment, Recruitment, Retention**
 - Projected enrollment for 2021-2022 is 230 students. (See below for detailed projections.)
 - Budget will be based on 220 students enrolled.

- **Calendar Proposal**

- Impact of Juneteenth Holiday
- Lessons from 2021
- Original Charter Language about length of school year:

In order to accommodate families with children in other Marblehead public schools, the Board of Trustees plans to follow the calendar of Marblehead's other public schools as closely as possible, with three noted exceptions:

- *many Marblehead families **wish to finish the school year earlier** (the school year ended on the last Monday of June, 1994);*
- *MCCPS is committed to increased time spent on academics and will have a longer school day, **slightly longer school year**, and increased time devoted to core academics;*
- *the Board is committed to addressing the religious and cultural needs of all its students as equally as possible. Unless all religious and cultural holidays are observed by closing the school, it isn't fair to observe any by closing the school. Therefore, the school will close only for nationally-observed holidays. However, students and faculty will be strongly supported in observing their own holidays.*

- **Facilities Updates**

- Fencing in back of school
- Back of school clean out
- Summer Work - paint, floors
- Construction of four small group/office spaces
- Plumbing project
- HVAC rooftop unit

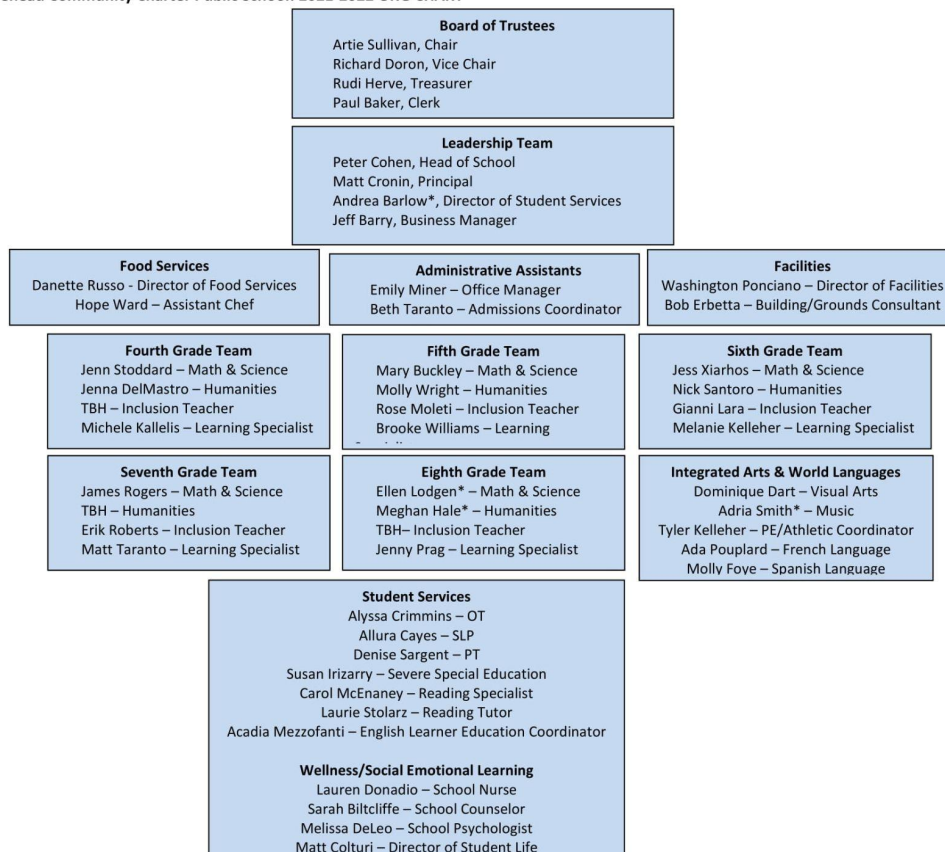
- **Fall 2021**

- Team Building - Mentoring - On-Boarding New Staff (huge opportunity)
- Lessons Learned from teaching & learning in a global pandemic
- Teaching Force reboot
- PD: Executive Functioning & Tier One Instruction, Strengthening Co-Teaching, Criteria for Excellence implementation
- Feedback and Evaluation system

Projected Enrollment 2021-2022

Grade	Accepted New Students	Offers Out	Returning Students (Intent to Return)	Total Projected Enrollment	Eligible Waitlist	Waitlist Lynn & Salem	Total Waitlist
4	46	1	0	47	8	35	43
5	4	0	46	50	32	37	69
6	3	2	43	48	7	37	44
7	0	0	49	49	23	21	44
8	4	0	32	36	3	13	16
Total	57	3	170	230	73	143	216

Marblehead Community Charter Public School: 2021-2022 ORG CHART



*Department Chair

July 20, 2021