



# School Update



## MISSION |

*Through rigorous academics, character development, and strong supports for every learner, **Libertas Academy Charter School** prepares all sixth through twelfth grade students to **succeed within the college of their choice and to be positive, engaged members of their communities.***





**BALLOON POP MADNESS!**



**GRADE 6 "THIS IS WHAT WE DO"**



**G8 DRUMLINE + CHANT!**



**GRADE 7 "THIS IS WHAT WE DO"**



**UCONN MORNING CHAT!**



**MOREHOUSE CONGA!**



# Key School Data



**LIBERTAS ACADEMY**  
CHARTER SCHOOL



# Talent Progress

## 1) 85% Retention Goal in both Academies

Academy	Goal	Score
Lower	85%	100%
Upper	85%	90.09%

### Roles Hired/Internal Shifts

Name	Role	Academy	Status
Juan Martinez-Munoz	College Counselor	UA	New
Yari Rodriguez	Algebra 1	UA	Internal shift
Tarrin D'Aniello	Biology	UA	New
Stephen Cowley	Special Services	UA	Internal shift
Mike Vincent	Dean of Student Supports	UA	Internal shift
Level Riggins	Special Services	UA	Internal shift
Kerry Baptiste	AP Seminar	UA	Internal shift
Francis Castillo	Physics	UA	New
Justin Alamo	Science	LA	New
Nicole Malanga	Special Services - ELA	LA	New

Pending: LA Math 2

## Open Priority Roles

Priority	Algebra 2	UA
Priority	Director of Operations	UA
Priority	AP Human Geography	UA
Priority	Seminar	UA
Priority	AP World History	UA
Priority	AP US History	UA
Priority	AP Language	UA
Priority	ELL	UA
Priority	Seminar 2	UA
Priority	Math 2	LA
Priority	Special Services - Math	LA
Open	History	LA
Priority	ELL	LA
Open	History	LA
Priority	Special Services - Math	LA



# 23-24 STUDENT RECRUITMENT

## Data on Lottery Acceptance

### 23-24 Lottery Acceptance : PTG Status

4/10 TODAY'S GOAL: 95%

Sub-Goal #3

85% of all families offered a seat accept the offer (total accepted / total offered)

	Total Seats Offered	Lottery = YES	% PTG	Decline	Lottery - Status
Incoming 6th	128	94	73%	18	Progressing
Rising 7th	15	12	80%	1	Progressing
Rising 8th	18	11	61%		Off Track
Rising 9th	16	8	50%		Off Track
Rising 10th	14	7	50%		Off Track
<b>TOTAL</b>	<b>191</b>	<b>132</b>	<b>69%</b>	<b>19</b>	<b>Off Track</b>



# 23-24 STUDENT RECRUITMENT

Date: April 9						
Grade	Call - No Survey	No	Unsure	Withdrew Already	Yes	Grand Total
Grade 10	5	2	4	2	64	77
Grade 6	6	1	5		84	96
Grade 7	5	2	9		67	83
Grade 8	2	3	16	1	71	93
Grade 9			5		63	68
<b>Grand Total</b>	<b>18</b>	<b>8</b>	<b>39</b>	<b>3</b>	<b>349</b>	<b>417</b>

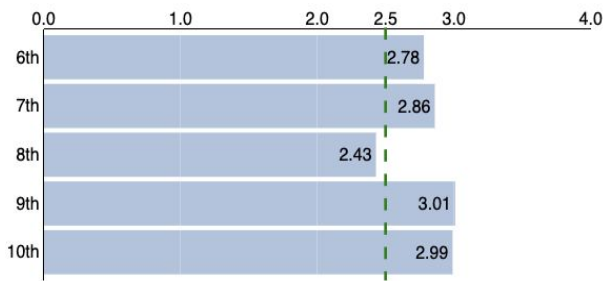
## Intent -to-Return - 2nd chart

- Family retention vs. attrition status
  - Rising grades 7,8,10,11 = 92% retention
  - Rising grade 9 = 80% retention
  - **Next steps:** 1) Ari round 2 calls. 2) 4/24 - Matric meeting with leaders to discuss next steps

INTENT TO RETURN									
2022-23 Retention <June - Sept '23> <Ari Owns> as of: 4/10/23									
Sub-Goal #1	**See individual goals below...								
	TOTAL ENROLLED as of 3/25/23	Goal - SUMMER RETURN PCT %	Goal - RETENTION	Goal - ATTRITION	UNSURE / WILL TRANSFER - Confirmed	WILL RETURN - Confirmed	ATTRITION STATUS	RATING	HISTORICAL COMPARISON EOY 21'22 to SOY 22-23
Incoming 6th	-	-	-	-	-	-	-	-	-
Rising 7th	96	92%	88	8	12	84	-4	Progressing	13
Rising 8th	83	92%	76	7	16	67	-9	Off Track	9
Rising 9th	93	80%	74	19	22	71	-3	Progressing	25
Rising 10th	68	92%	63	5	5	63	0	On Track	9
Rising 11th	77	92%	71	6	13	64	-7	Off Track	-
<b>TOTAL</b>	<b>417</b>	<b>-</b>	<b>372</b>	<b>45</b>	<b>68</b>	<b>349</b>	<b>-23</b>		<b>56</b>

Grade	Students			Attendance	Full Detentions			Demerits	Merits	Campus Cash All	Daily Attendance		Failing	GPA				
	Female	Male	Total	Daily	To Serve	Earned	Students	Earned	Earned	Daily Average	OSS	OSS Total	Courses	Q1	Q2	Q3	Q4	Y1
6th	50	46	96	95%	3	536	3	-391	66,048	3.07	0	0	0	2.66	2.72	2.93		2.78
7th	39	44	83	95%	9	513	4	-450	42,635	3.05	0	0	0	2.80	2.81	2.90		2.86
8th	40	52	92	94%	1	690	1	-589	45,881	3.11	0	0	0	2.31	2.43	2.53		2.43
9th	38	31	69	94%	16	641	8	-495	29,409	2.99	28	28	0	2.81	3.04	3.12	4.33	3.01
10th	35	40	75	95%	6	918	5	-545	30,427	2.84	41	41	7	2.91	2.91	3.05	2.02	2.99
Total (5)	202	213	415		35	3,298	21	-2,470	214,400	1,253	69	69	7					
Average	40	43	83	95%	7	660	4	-494	42,880	3	14	14	1	2.68	2.76	2.89	2.39	2.80

### Year-to-date GPA by Grade Level





# GPA Report

March 22, 2023

## Quarter 3 Data

<b>Q3</b>	<b>50% &gt; 3.0</b>	<b>75% &gt; 2.5</b>	<b>90% &gt; 2.0</b>
<b>Overall</b>	56% (+1)	81% (+4)	88% (+2)
<b>9th Grade</b>	63% (+4)	88% (+2)	93% (+3)
<b>10th Grade</b>	51% (+1)	75% (+5)	85% (+1)

## Yearlong Data

<b>Y1</b>	<b>50% &gt; 3.0</b>	<b>75% &gt; 2.5</b>	<b>90% &gt; 2.0</b>
<b>Overall</b>	50% (+0)	76% (+1)	90% (+0)
<b>9th Grade</b>	49% (-1)	81% (+0)	96% (+3)
<b>10th Grade</b>	52% (+1)	73% (+2)	87% (+7)

# FYIs & Approvals

## ***Approvals:***

- None

## **FYIs:**

- Facilities Update
- FY24 Budget