



Libertas Academy Charter School

Facilities Committee

Published on March 16, 2022 at 3:57 PM EDT

Date and Time

Thursday March 24, 2022 at 9:00 AM EDT

Location

<https://us04web.zoom.us/j/5069946767?pwd=QXEvbzlhb0tYZWE4VHI6MCTrVFIGUT09>

Agenda

	Purpose	Presenter	Time
I. Opening Items			9:00 AM
A. Record Attendance			1 m
B. Call the Meeting to Order			
C. Approve Minutes	Approve Minutes		1 m
II. Update Facility Search Process			9:02 AM
Review options that are up for consideration.			
A. Chestnut Street Option	FYI		20 m
B. Liberty Street Option			20 m
III. Closing Items			9:42 AM
A. Next Steps			5 m
B. Next Meeting Date & Time			5 m
C. Adjourn Meeting	Vote		

Coversheet

Chestnut Street Option

Section: II. Update Facility Search Process

Item: A. Chestnut Street Option

Purpose: FYI

Submitted by:

Related Material:

Libertas Expansion and Purchase Options 3 10 2022 MM Edits (1) UPDATEED.xlsx

10.28.20_Libertas Program Option 4.pdf

Libertas A4.2 Option #4.pdf

Libertas A4.3 Option #4.pdf

Libertas A4.1 Option #4.pdf

Notice

The following file is attached to this PDF. You will need to open this packet in an application that supports attachments to pdf files, e.g. [Adobe Reader](#):

Libertas Expansion and Purchase Options 3 10 2022 MM Edits (1) UPDATEED.xlsx

Libertas Middle and High School

PRELIMINARY PROGRAM OF REQUIREMENTS

KATIE APRIL NOTES

12th Grade Added Space Doesn't Yet Exist

School Years		Year 4	2024-2025				UNIT TOTAL
ROOM TYPE		NO. OF UNITS	CAPACITY PER UNIT	TOTAL	AREA SF	AREA	NET
INSTRUCTION							
Typical Classrooms - Grade 6	not sure if relevant, but some of these rooms are a little larger than 750.	3	30	90	750	2,250	
Typical Classrooms - Grade 7	not sure if relevant, but some of these rooms are a little larger than 750.	3	30	90	750	2,250	
Typical Classrooms - Grade 8	There are 4 classrooms on the 5th floor (8th grade)	4	23	92	750	3,000	
Typical Classrooms - Grade 9	Appx. 4 classrooms: reading, writing, math, social studies,	4	23	92	750	3,000	
Typical Classrooms - Grade 10	Appx. 4 classrooms: reading, writing, math, social studies,	4	23	92	750	3,000	
Typical Classrooms - Grade 11	Appx. 4 classrooms: reading, writing, math, social studies,	4	23	92	750	3,000	
Typical Classrooms - Grade 12	Appx. 4 classrooms: reading, writing, math, social studies,	4	23	92	750	3,000	
Breakout Rooms	As of 2019-20 SY: (4) rooms: MIT / Spr. Coll / UPR / Maternity Room. ---. Adding 2 for 2021-22 SY.	10	8	80	350	3,500	
Science Room - NGSS		2	25	50	900	1,800	
Science Resource Prep and Storage		3			150	450	
Computer Lab	Possibly part of Specialty Room use	1	25	25	900	900	
Specialty Room	Tentative use : Foreign Language Enrichment room for right now	1	25	25	900	900	
Storage for Specialty Room							
Total Instructional Space						27,050	
LARGE GROUPS							
ASSEMBLY AREA							
Lion's Den	Current multi-purpose space existing in 2019-20 SY. Used as open music space, ELE large groups on Fridays, staff PD, etc...Unsure of use / changes to it as part of expansion						0
Library	Doesn't exist in 2019-20 SY. ASK MIKE - TENTATIVE. SQ. FOOTAGE FOR THIS	1	50	50	1,200	1,200	884
Pride Café	Current cafeteria + gym space for students in 2019-20 SY. Can house 2 grades at once. Don't know precise SQFT						0
	Pride Café is shared with the Cafeteria						
Gym/ Cafeteria with pullout bleachers	Gym would also be cafeteria for HS (grades 9-12). MS would still eat in current Pride Café space (2 grades eat at	1				8,000	8,688
Student restrooms in gym area include lockers for changing.	RESTROOMS ARE PART OF THE COMMON SPACE - BELOW						0
MUSIC ROOM	Adding a MUSIC ROOM! Soundproof it; enough space for students + storing instruments. Can architect recommend best way to store instruments + sound proof. Unsure of SQFT - put 1,100 for right now.	1	35	35	1,100	1,100	0
	Possible Music Room can occur in Specialty Classroom Space						
Kitchen	Knock down BFIT to make for larger kitchen space since will need larger equipment. PENDING if will want to cook on-site. Discuss internally + w/ food partner.	1			700	700	850
Storage Area for Kitchen	Take from BFIT.	1			150	150	0
Storage Area for Cafeteria							217
Storage Area for Gymnasium							277
Total Large Group Space						11,150	10,422
LOBBY / MAIN ENTRANCE	Need to make it ADA compliant.						

	UNIT 1	UNIT 2	UNIT 3	UNIT 4	UNIT 5	UNIT 6	UNIT 7	UNIT 8	UNIT 9	UNIT 10	TOTAL
NO. OF UNITS	AREA	AREA	AREA	AREA	AREA	AREA	AREA	AREA	AREA	AREA	NET
	SF	SF	SF	SF	SF	SF	SF	SF	SF	SF	AREA
3	752	716	793								2,261
3	660	759	795								2,214
3	753	724	764								2,241
4	752	786	578	578							2,694
4	650	788	612	545							2,595
4	570	585	554	622							2,331
4	665	595	590	530							2,380
10	163	195	277	181	231	325	81	217	214	345	2,229
2	866	895									1,761
2	94	95									189
0	0										0
1	872										872
1	112										112
											21,879

Libertas Middle and High School

PRELIMINARY PROGRAM OF REQUIREMENTS

KATIE APRIL NOTES

12th Grade Added Space Doesn't Yet Exist)

School Years		Year 4	2024-2025			
		NO. OF	CAPACITY		UNIT	TOTAL
ROOM TYPE		UNITS	PER UNIT	TOTAL	SF	AREA
Current entrance - reception area	Current main office/entrance space for 2019-20 SY. Add a divider between this space + the school so visitors have to be buzzed in.	1			500	500
	Traffic study/engineer - review Bridge St (make it a non-street during school hours); people park along it and don't move always during school hours; consider 6-7 buses AND family drop-off. City will require traffic study.					
Lobby (space between Pride Café + Lion's Den)	Unused space as of 2019-20 SY.	1				800
<u>MEDICAL</u>						
Medical Suite	Must make larger - add to current bathroom; add another? Possibility of "waiting area" w/ window? When child waiting and Nurse w/ another student. Can architect make recommendations based on strong examples from other schools?	1				300
ADA Restroom	doesn't yet exist for 2019-20 SY	1	1	1	100	100
Office	doesn't yet exist for 2019-20 SY	1	1	1	100	100
Examination Area	doesn't yet exist for 2019-20 SY	1	5	5	100	100

NO. OF	UNIT 1	UNIT 2	UNIT 3	UNIT 4	UNIT 5	UNIT 6	UNIT 7	UNIT 8	UNIT 9	UNIT 10	TOTAL
UNITS	AREA	AREA	AREA	AREA	AREA	AREA	AREA	AREA	AREA	AREA	NET
	SF	SF	SF	SF	SF	SF	SF	SF	SF	SF	AREA
											0
1	450										450
1	80										80
1	220										220
1	150										150

Libertas Middle and High School

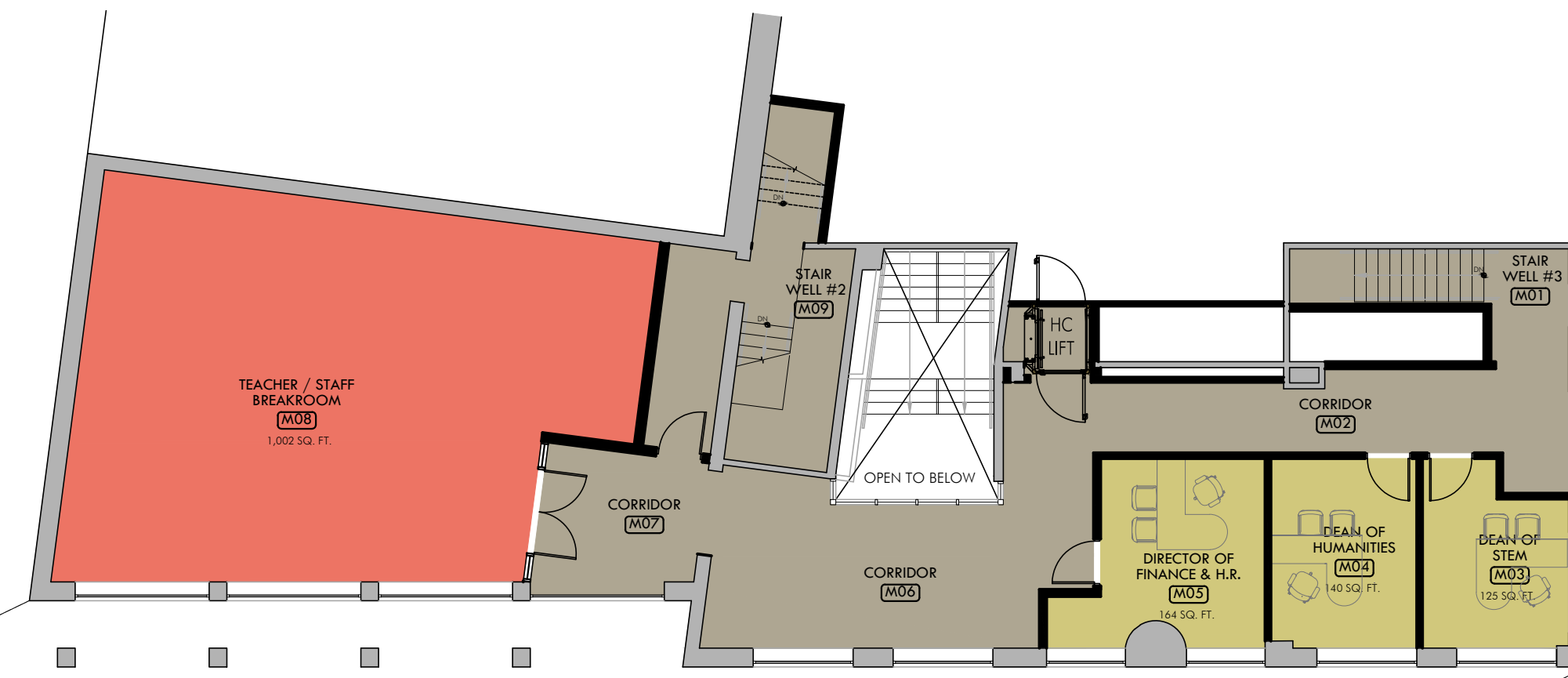
PRELIMINARY PROGRAM OF REQUIREMENTS

KATIE APRIL NOTES

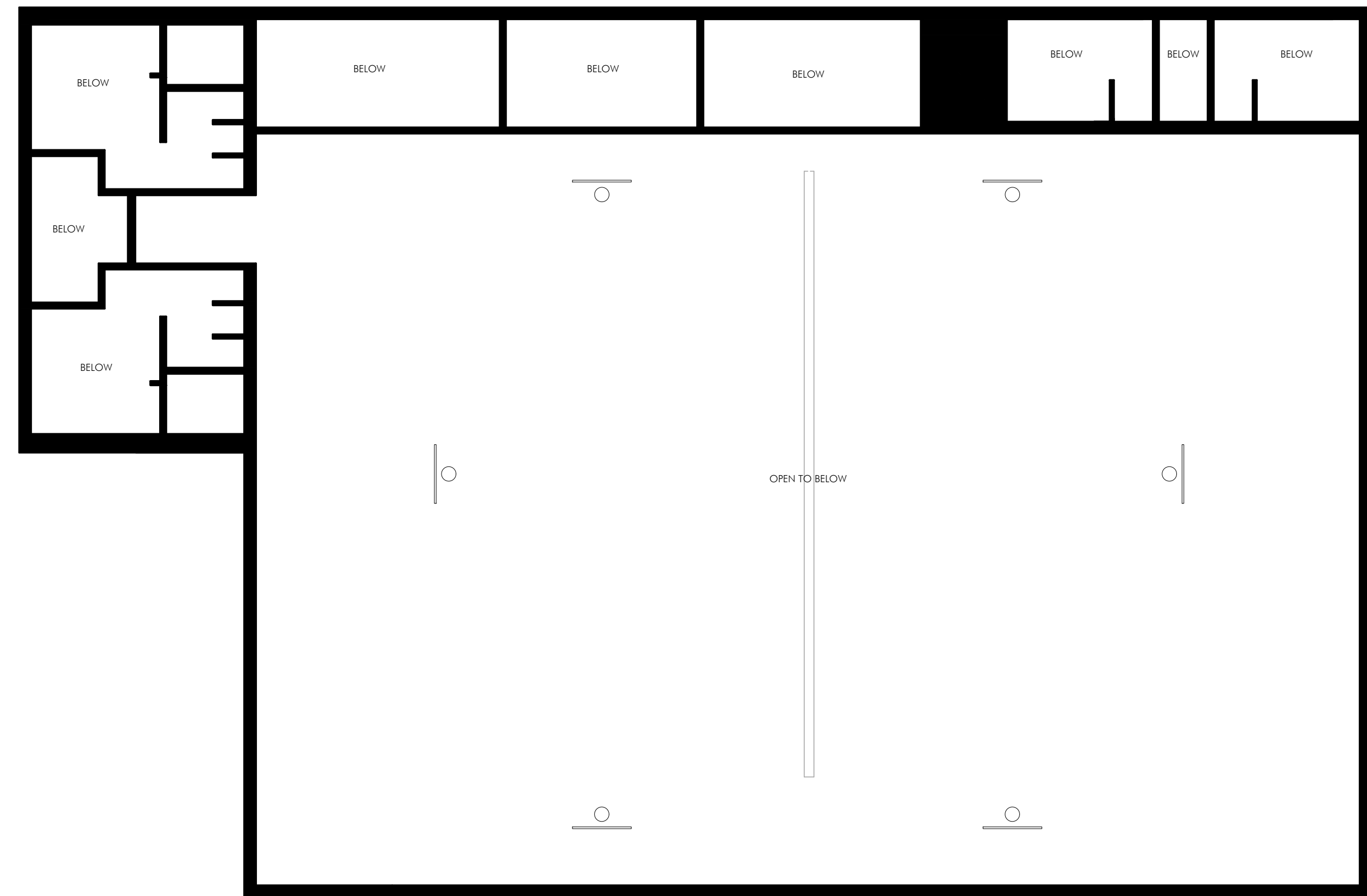
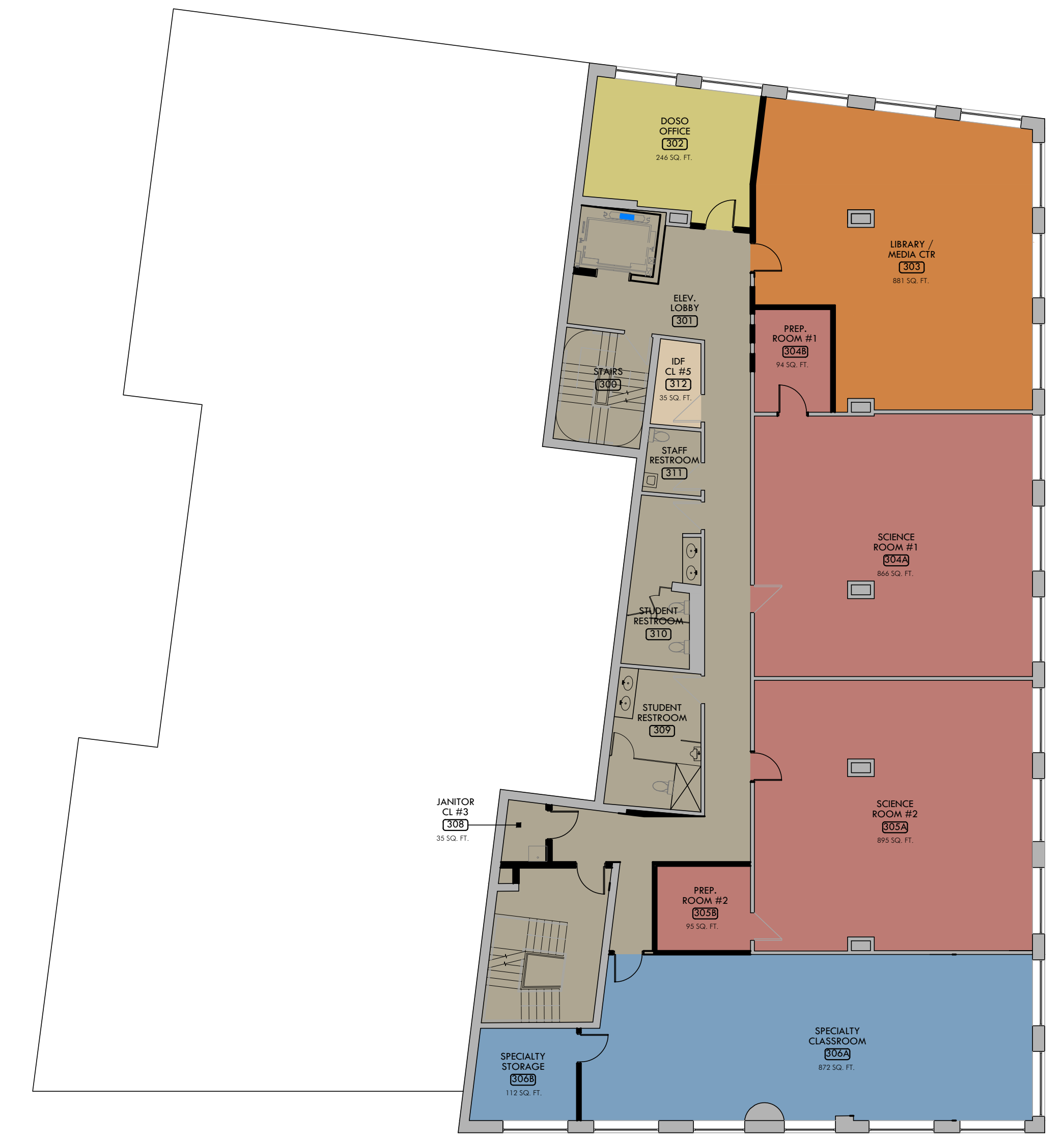
12th Grade Added Space Doesn't Yet Exist)

School Years		Year 4	2024-2025				UNIT	TOTAL
ROOM TYPE		NO. OF UNITS	CAPACITY PER UNIT	TOTAL	AREA SF	AREA	NET	
ADMINISTRATION								
ADMINISTRATIVE								
Executive Director	confirm sq. footage	1	1	1	250	250		
High School Head of School	confirm sq. footage	1	1	1	250	250		
Middle School Head of School	confirm sq. footage	1	1	1	250	250		
Sen. Dir. Strategy & Ops	confirm sq. footage	1	1	1	250	250		
Director of Finance & Human Resources	DOESN'T EXIST AS OF 2019-20	1	1	1	250	250		
DOSO Office (3rd floor)	For students, including Quiet Room. MUST CONFIRM SQ. FOOTAGE if 700.	2	4	8	350	700		
Dean of STEM		1	1	1	250	250		
Dean of HUMANITIES		1	1	1	250	250		
Dean of STUDENT SERVICES		1	1	1	250	250		
Director of College Placement		1	1	1	250	250		
Counselor's Offices (2)	At least 2-3. We have 2 Counselors right now. Make sense to start with 2 which is what we have for 2019-20 SY? Build out to 3 as final number?	2	2	4	200	400		
Operations Team (Cal Tech)	This be shared by: OM; Ops Associate; Manager of Student Recruitment; Director of F&H.	1	1	1	500	500		
Conference Room		1	12	12	500	500		
Teacher Work Room	2 exist on 3rd floor (6 grade) + 4th floor (7 grade) as of 2019-20 SY. // possibly create 1 for HS general.	3	12	36	500	1,500		
Staff Break Room	1 for MS (already exists in 2019-20 SY) // 1 for HS (to be built)	2	15	30	900	1,800		
PLANT OPERATIONS / SECURITY								
GENERAL CUSTODIAL								
IDF Room	What is this?	1		1	150	150		
General Supply		1			350	350		
General Storage		1			900	900		
Total Administrative and Support Space						11,200		
TOTAL PROGRAMMED AREA (70%)						49,400		
TOTAL CORE AREA (30% Gross)						14,820		
TOTAL GROSS AREA (100%)						64,220		
TOTAL STUDENT CAPACITY						640		
TOTAL SF PER PUPIL						100		

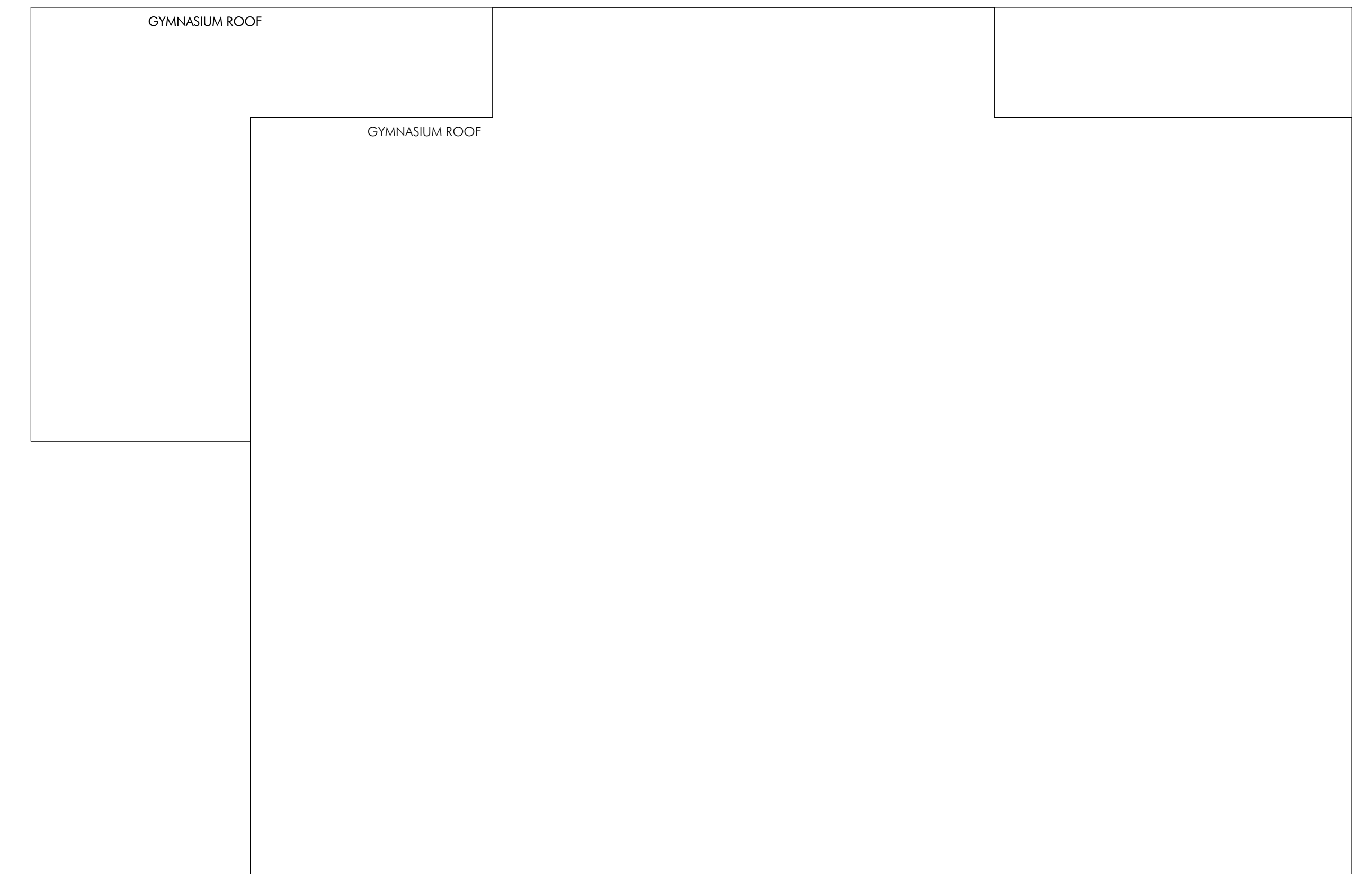
NO. OF UNITS	UNIT 1 AREA SF	UNIT 2 AREA SF	UNIT 3 AREA SF	UNIT 4 AREA SF	UNIT 5 AREA SF	UNIT 6 AREA SF	UNIT 7 AREA SF	UNIT 8 AREA SF	UNIT 9 AREA SF	UNIT 10 AREA SF	TOTAL NET AREA
1	129										
1	100										100
1	100										100
0											0
1	164										164
1	246										246
1	125										125
1	140										140
1	115										115
1	110										110
2	249	249									498
0											0
1	126										126
3	408	375	433								1,216
1	1,002										1,002
											0
5	18	35	35	25							113
7	225	20	30	46	35	90	72				518
3	40	40	58								138
2	128	124	30	31							313
											5,924
											38,225
											11,468
											49,693
											640
											78



Mezzanine Below Second Floor



Second Floor Plan



Third Floor Plan

- GYMNASIUM ADDITION
- ADMINISTRATION - OFFICE
- LIONS DEN
- HEALTH SUITE
- COMMON AREA: STAIRS, CORRIDORS, TOILET ROOMS
- CLASSROOM SPACE
- MUSIC ROOM
- FOOD SERVICE
- BREAK OUT ROOMS
- SCIENCE LABS
- WORK ROOMS, STAFF BREAK ROOMS
- LIBRARY
- SPECIALITY ROOM, COMPUTER LAB
- DEMOLISHED BUILDING ELEMENTS
- STREET FLOOR INFILL

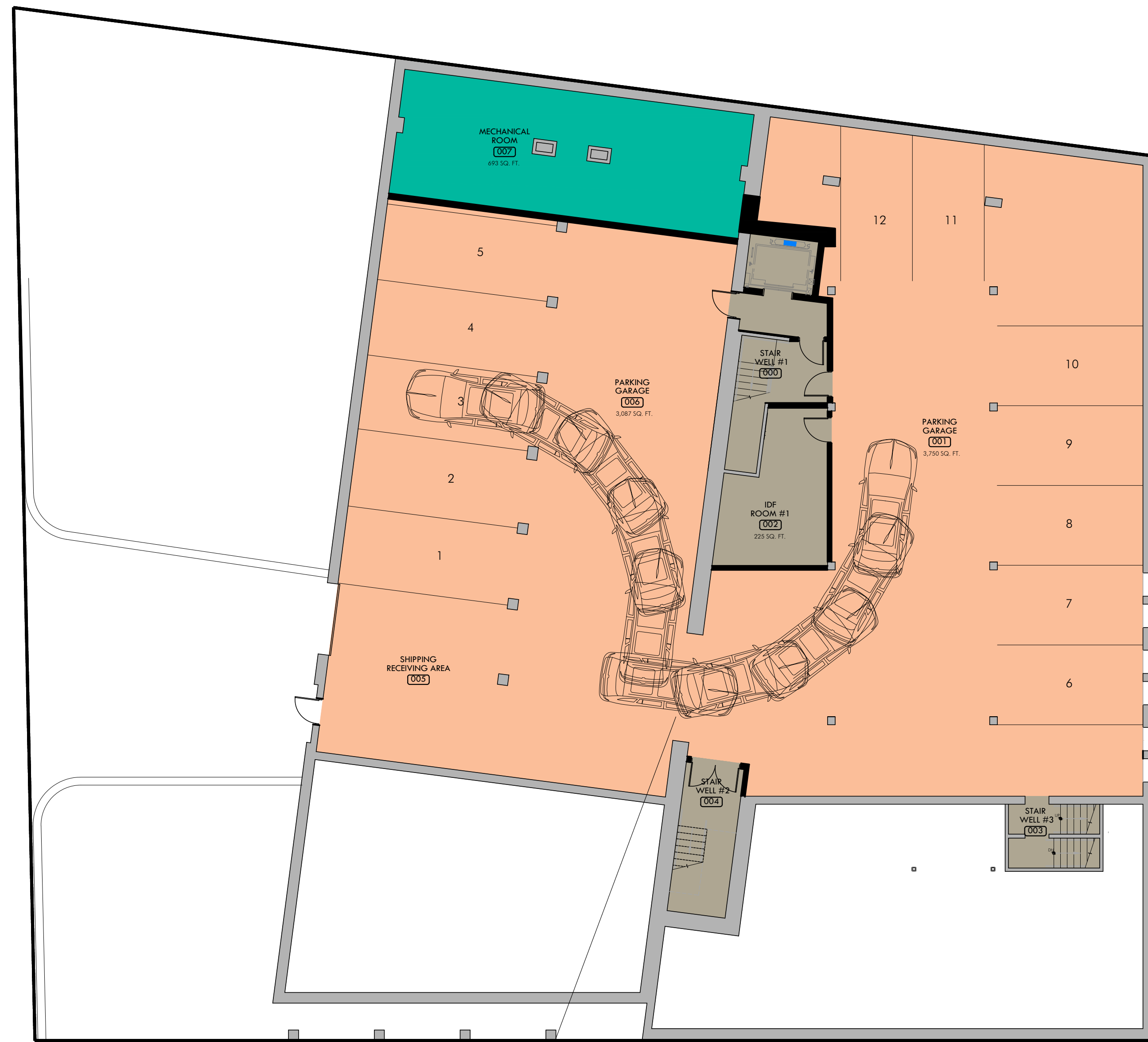


Fourth Floor Plan

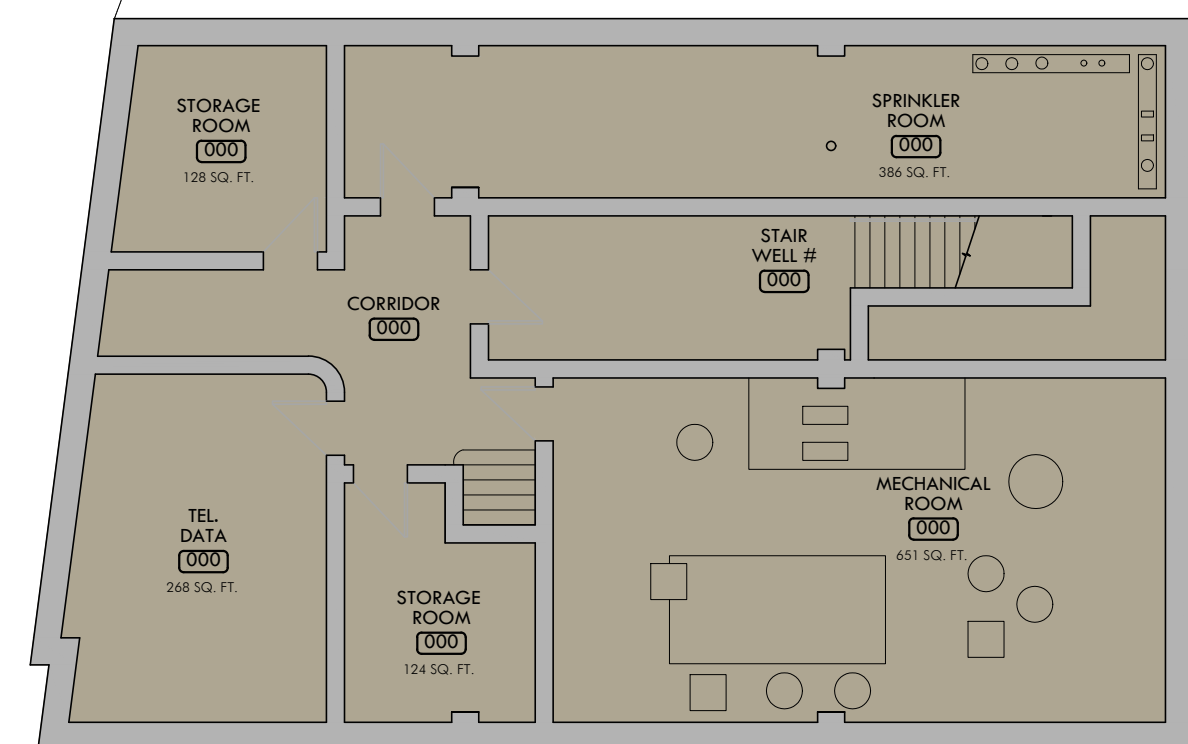


Fifth Floor Plan

- GYMNASIUM ADDITION
- ADMINISTRATION - OFFICE
- LIONS DEN
- HEALTH SUITE
- COMMON AREA, STAIRS, CORRIDORS, TOILET ROOMS
- CLASSROOM SPACE
- MUSIC ROOM
- FOOD SERVICE
- BREAK OUT ROOMS
- SCIENCE LABS
- WORK ROOMS, STAFF BREAK ROOMS
- LIBRARY
- SPECIALITY ROOM, COMPUTER LAB
- DEMOLISHED BUILDING ELEMENTS
- STREET FLOOR INFILL



Lower Level Plan

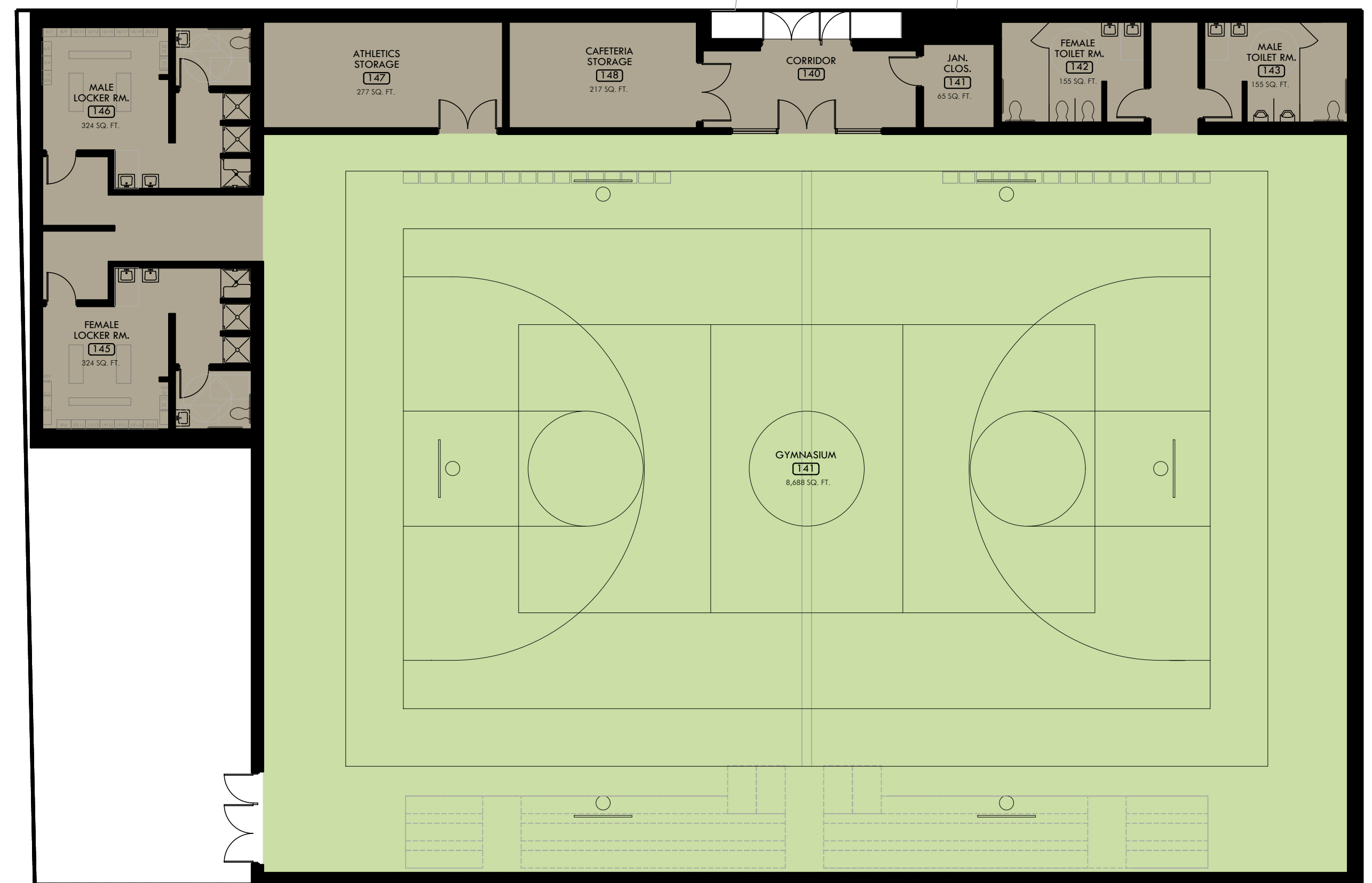


Sub-Level Plan

- GYMNASIUM ADDITION
- ADMINISTRATION - OFFICE
- LIONS DEN
- HEALTH SUITE
- COMMON AREA: STAIRS, CORRIDORS, TOILET ROOMS
- CLASSROOM SPACE
- MUSIC ROOM
- FOOD SERVICE
- BREAK OUT ROOMS
- SCIENCE LABS
- WORK ROOMS, STAFF BREAK ROOMS
- LIBRARY
- SPECIALITY ROOM, COMPUTER LAB
- DEMOLISHED BUILDING ELEMENTS
- STREET FLOOR INFILL



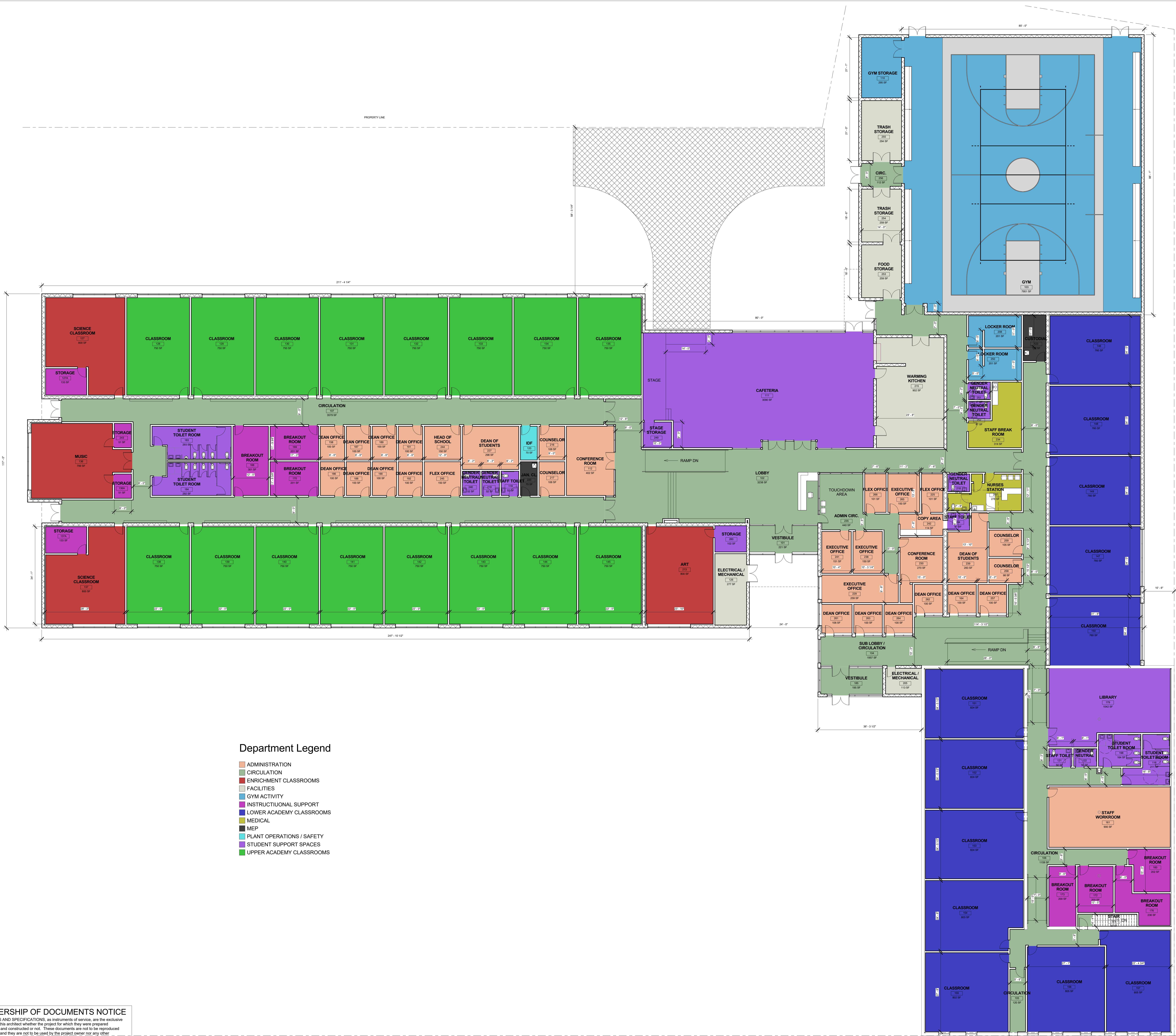
First Floor Plan



Coversheet

Liberty Street Option

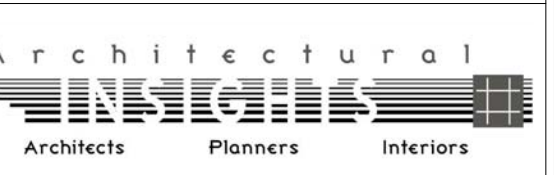
Section: II. Update Facility Search Process
Item: B. Liberty Street Option
Purpose:
Submitted by:
Related Material: 2022-2-18 A101.1.pdf



- Department Legend**
- ADMINISTRATION
 - CIRCULATION
 - ENRICHMENT CLASSROOMS
 - FACILITIES
 - GYM ACTIVITY
 - INSTRUCTIONAL SUPPORT
 - LOWER ACADEMY CLASSROOMS
 - MEDICAL
 - MEP
 - PLANT OPERATIONS / SAFETY
 - STUDENT SUPPORT SPACES
 - UPPER ACADEMY CLASSROOMS

OWNERSHIP OF DOCUMENTS NOTICE
DRAWINGS AND SPECIFICATIONS, as instruments of service, are the exclusive property of this architect whether the project for which they were prepared is executed and constructed or not. These documents are not to be reproduced in any form and they are not to be used by the project owner for any other project on any other projects or for any extensions or additions or alterations to the original project except by written authorization and permission from and agreement with this architect.

NEW CHARTER SCHOOL:
Libertas Academy Charter School
LIBERTY STREET, SPRINGFIELD MA



3 Converse Street, Palmer, MA 01069
413-283-2553 fax 413-289-8993
e-mail: admin@architecturalinsights.com

CONSULTANT

Sheet Title:
CONCEPTUAL PLAN

Date: **2/18/22**
Project No: **1671**
Drawn By: **DD**
Checked By: **RSH**

A101