

# Unified Insights™ MTSS

MOVING MTSS FORWARD, WITH DEEPER,  
MORE CONNECTED DATA



For too long educators and interventionists have lacked a single solution to analyze, collaborate, and act on all the critical student data—including historical information—required for their multi-tiered systems of support (MTSS) practice.

PowerSchool's comprehensive MTSS solution allows educators to identify and track student needs with an extensive range of inputs, implement and monitor interventions, and review the efficacy of their MTSS framework for continuous improvement.



## Support Any MTSS Facet or Framework

MTSS models can vary greatly from district to district. Unified Insights™ MTSS is a **comprehensive solution that's adaptable to any MTSS framework**—helping districts ensure that all students have equal access to the support they need.



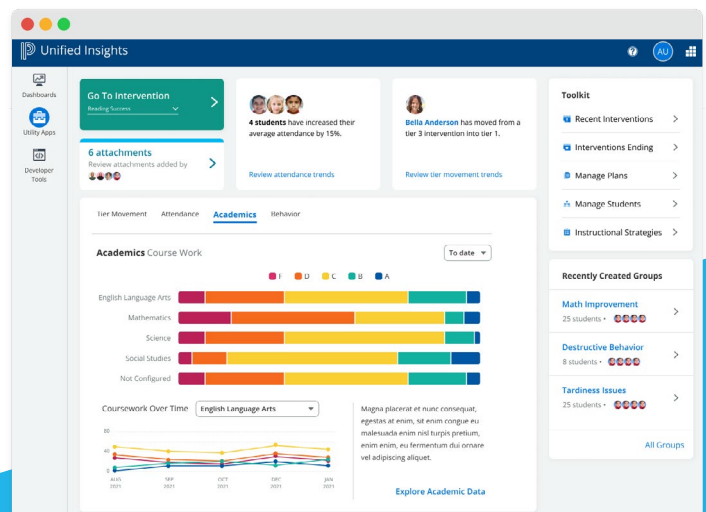
## Connected Data and Intervention Analytics

Bring together the data from your district's SIS, behavior management, SEL, and assessment solutions in a single platform. Users can identify student needs and **attach critical data to student plans and interventions**. Connected data also provides educators with intervention analytics needed to measure success.



## MTSS Tools and Workflows

Promote a streamlined, digital, data-driven approach to your MTSS practice through pre-built, configurable workflows that make analysis easy and actionable. **Collaboratively support students and monitor progress** with customizable Intervention Management and Student Plans tools. Build student groups and drill down into specific students to see patterns and individual traits.



“Implementing evidence-based practices within MTSS framework provides an effective organizing structure for schools, programs and districts.”

Source: The U.S. Department of Education Roadmap to Recovery Report - Supporting Child and Student Social, Emotional, Behavioral, and Mental Health Needs - October 2021

### 1. Identify Student Needs

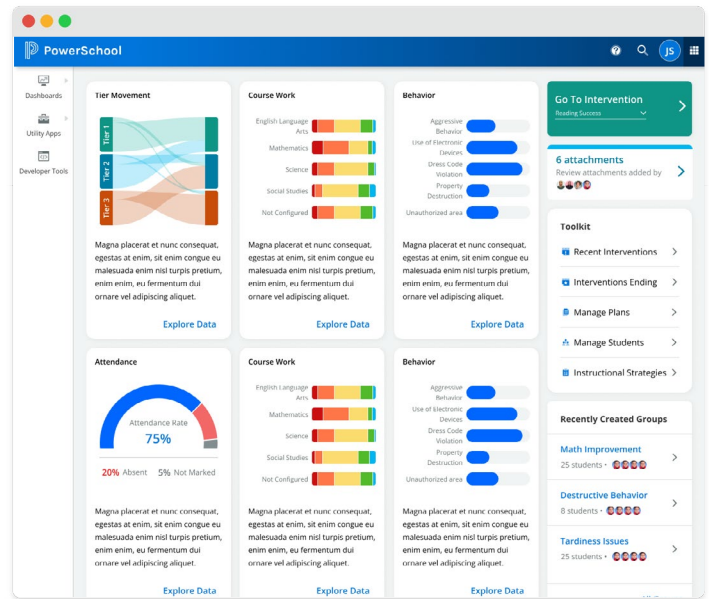
Only Unified Insights™ MTSS provides the rich, connected data educators need to proactively identify at-risk students and recommend additional and differentiated support. Access whole child data—including grades, assessments, SEL, behavior, and attendance—for any student or shared PowerSchool student groups.

### 2. Create and Track Student Plans

Create customized individual student forms to fit any need, such as reading and literacy plans or individualized education plans. Student Plan templates allow schools and districts to establish their own layout and fields, while importing critical student data to provide context and monitor progress.

### 3. Execute and Monitor Interventions

A workflow management system allows educators to identify the correct interventions, instantly communicate with other stakeholders, efficiently administer the specific support students need, and monitor student progress from one location. Capture notes, artifacts, and observations while bringing in critical data such as attendance, grades, behavior, and assessment results.



Unified Insights™ MTSS imports all the data from a district's SIS, behavior management, SEL, and assessment solutions and connects them for deep analytics and insights.

### 4. Review Outcomes and Effectiveness

PowerSchool helps you understand the efficacy of your MTSS practice. Measure the progress of intervention activities for both individual students and student groups. Monitor tier movement, review student plan and intervention completion, and compare outcomes of different categories, levels, and instructional strategies.

Visit [www.PowerSchool.com](http://www.PowerSchool.com) or call 1-877-873-1550 to learn more.

