



Academic Excellence Committee

5-29-24

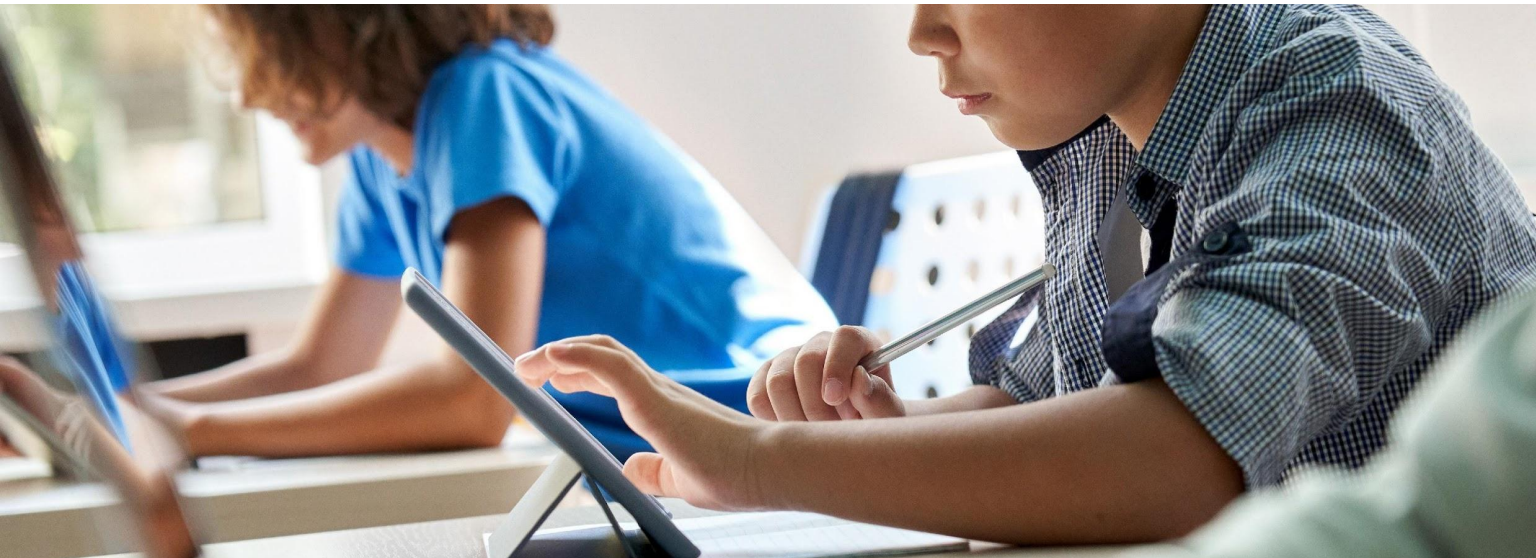
Executive Summary

As we close out the school year, we anxiously await our SBAC results.

Schools are finishing strong, hiring is looking good and summer school is getting ready to launch.

Today's Topics:

1. ELA Adoption Update (Crystal) 15
2. Multilingual Language Priority (Crystal) 15
3. Staffing Update (James) 10





Topic 1: ELA Adoption Update

Why are we doing this?

- Ability to replicate what we are doing in the classrooms to support all learners and educators, while still allowing for theme and variation
- Ability to give educators appropriate high-quality materials in all areas of language arts



ELA Committee Big Goals

- **Deepen our learning on the Science of Reading (SoR)**
 - On going
- **Create a vision for Navigator ELA**
 - [NS Vision Draft 1](#) complete, we will revisit after we pilot curriculum
- **Review curriculum using established criteria for adoption**
 - Adopted Lit's [High Quality Curriculum Review Criteria](#)
- **Pilot the curriculum**
 - Test and Decide May 29-30



ELA Curriculum Adoption Timeline

Feb-May 2024

- ELA committee meets monthly to deepen learning on the SoR, explore and choose curriculum to pilot in 2024-25

**Aug 2024-
March 2025**

- Instructional staff pilot curriculum in classrooms and provide ongoing feedback

April 2025

- Select curriculum for adoption

**2025-2026
school year**

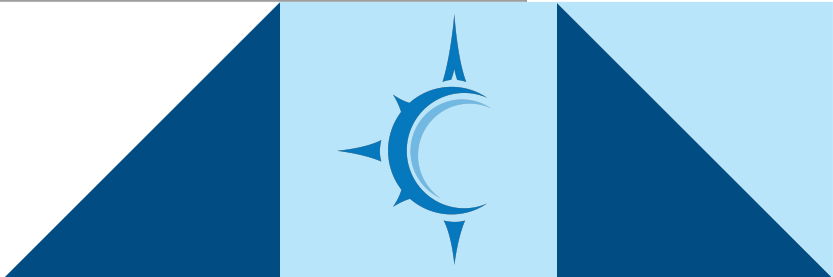
- Launch new curriculum



Test and Decide: May 29 and 30

During this two-day, in-person convening participants will engage in a facilitated investigation into the module, unit, and lesson level of Navigator’s narrowed curricula with the goal of having selected 1 - 2 comprehensive curricula to pilot in the SY24-25 school year. This experience will include preparing and teaching portions of a lesson and reflecting on implications for schedules, training, planning, and coaching.

K-2 Word Recognition Finalists	K-5 Language Comprehension Finalists	K-8 Language Comprehension Finalists
1. Bookworms 2. EI Education	1. Bookworms 2. EI Education	1. Amplify CKLA 2. EL Education





Topic 1

Q and A

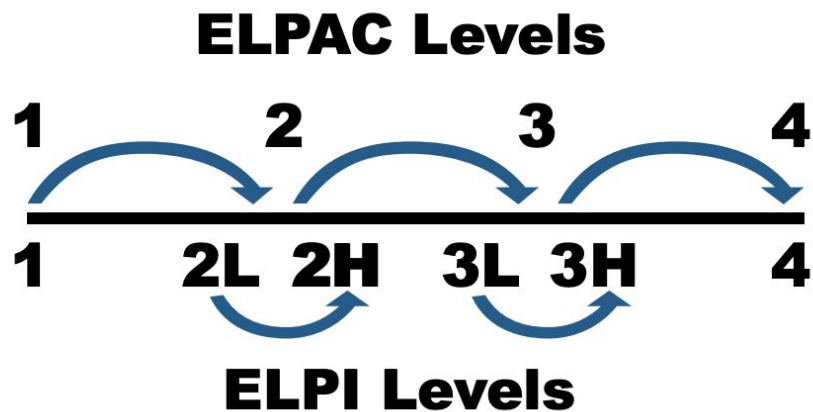


Topic 2: Multilingual Priority

Topic 2: California Dashboard

The English Language Proficiency Assessments for California (ELPAC) is given every year to English Learners until they reclassify as fluent English speakers. The test is administered between February and April. Although there are four ELPAC Levels, the state breaks into six English Learner Performance Indicator

- Grades 1-8 count toward our growth scores.



Each student that advances a level on ELPI helps dashboard score (i.e. 1--->2 Low)

Topic 2: State Measure

23-24 data was the first year schools received a dashboard color using 21-22 data vs 22-23 data.

To read this, two pieces of data are taken into account. GPS was red because they landed at 39.2% making progress in 22-23 (column 1) and they declined 15.4% from 21-22 (row 1).

The key is to have a higher performance and growth from year to year to score green or blue

English Learner Progress Indicator

Performance Level	Declined Significantly From Prior Year (by 10.1% p.pts or more)	Declined From Prior Year (by 2.0 p.pts to 10 p.pts)	Maintained From Prior Year (declined or increased by 1.9 p.pts or fewer)	Increased From Prior Year (by 2.0 p.pts to 9.9 p.pts)	Increased Significantly From Prior Year (by 10.0 p.pts or more)
Very High 65.0% or greater in Current Year	Yellow	Green	Blue	Blue	Blue
High 55.0% to 64.9% in Current Year	Orange	Yellow	Green	Green	Blue
Medium 45.0% to 54.9% in Current Year	Orange	Orange	Yellow	Green	Green
Low 35.0% to 44.9% in Current Year	Red	Orange	Orange	Yellow	Yellow
Very Low 34.9% or less than in Current Year	Red	Red	Red	Orange	Yellow

Why: ELPAC Performance

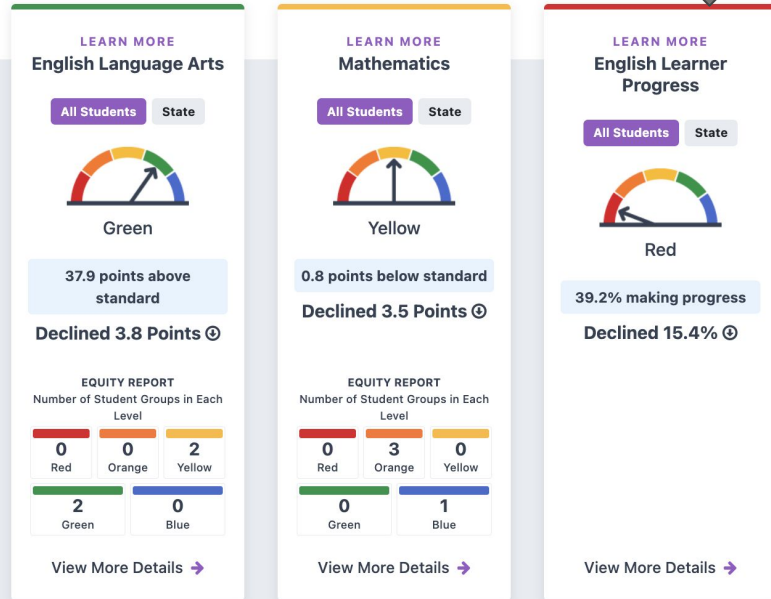
	GPS	HPS	WPS	HC
2021-22	55%	71%	53%	26%
2022-23	39%	43%	53%	62%
Growth	-16%	-28%	0%	+36%

Why: Current Dashboard Data

GILROY PREP (A NAVIGATOR SCHOOL)

Academic Performance

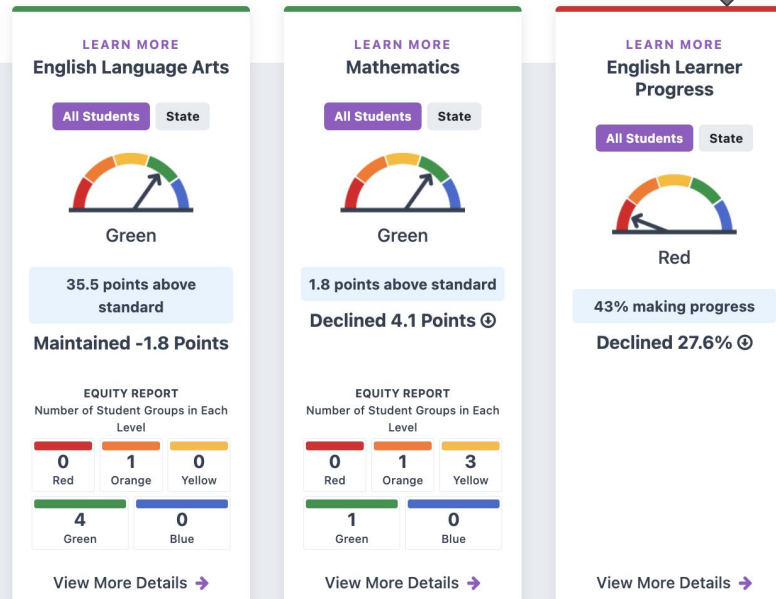
View Student Assessment Results and other aspects of school performance.



HOLLISTER PREP

Academic Performance

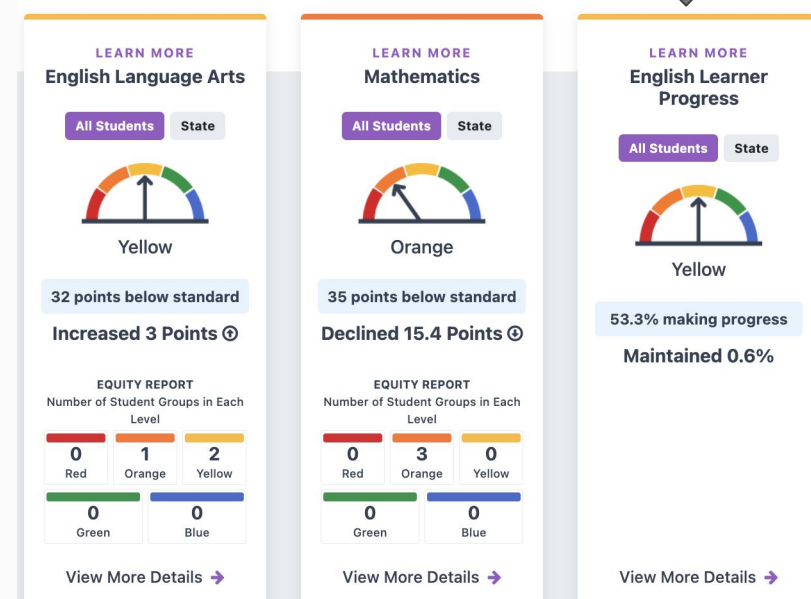
View Student Assessment Results and other aspects of school performance.



SBE - WATSONVILLE PREP

Academic Performance

View Student Assessment Results and other aspects of school performance.

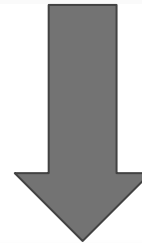


Why: Current Dashboard Data

HAYWARD COLLEGIATE CHARTER

Academic Performance

View Student Assessment Results and other aspects of school performance.



LEARN MORE

English Language Arts

All Students State



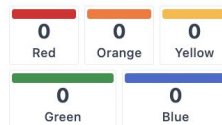
No Performance Color

29.9 points above standard

Increased 26.1 Points



EQUITY REPORT
Number of Student Groups in Each Level



View More Details →

LEARN MORE

Mathematics

All Students State

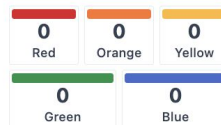


No Performance Color

18.7 points above standard

Maintained 0.9 Points

EQUITY REPORT
Number of Student Groups in Each Level



View More Details →

LEARN MORE

English Learner Progress

All Students State



No Performance Color

62.1% making progress

Increased 36.1%



EQUITY REPORT
Number of Student Groups in Each Level



View More Details →

2024-25 Navigator WIG: Supporting Multilingual Learners (MLLs)

Supporting Multilingual Learners - Get to green or blue

Increase the percent of Multilingual Learners increasing a level or maintaining a Level 4 on the ELPAC by ___% by June 2025.

GPS = 6%*

HPS = 2%*

WPS = 2%*

HC = > -2%*

* These will change as soon as we have 23-24 data because if our schools hit these targets this school year, they will already be green. Test is administered between Feb-April so we just started getting scores in on May 24.

Topic 2: How do we get to green?

English Learner Progress Indicator

Performance Level	Declined Significantly From Prior Year (by 10.1% p.pts or more)	Declined From Prior Year (by 2.0 p.pts to 10 p.pts)	Maintained From Prior Year (declined or increased by 1.9 p.pts or fewer)	Increased From Prior Year (by 2.0 p.pts to 9.9 p.pts)	Increased Significantly From Prior Year (by 10.0 p.pts or more)
Very High 65.0% or greater in Current Year	Yellow	Green	Blue	Blue	Blue
High 55.0% to 64.9% in Current Year	Orange	Yellow	Green	Green	Blue HC 62%
Medium 45.0% to 54.9% in Current Year	Orange	Orange	Yellow WPS 53%	Green	Green
Low 35.0% to 44.9% in Current Year	Red GPS 39% HPS 44%	Orange	Orange	Yellow	Yellow
Very Low 34.9% or less than in Current Year	Red	Red	Red	Orange	Yellow

HC > -2%



= to get green

GPS +6%
HPS +2%
WPS +2%



= current level

Topic 2: Summary

- All sites have attainable goals to hit green
- Making this a priority ensures maximum focus
- Great instruction for English Learners is great instruction for all students
- We usually smash what we prioritize

Key question:

Do we shoot for the minimum to achieve green which helps with renewal?

Do we shoot for blue as the standard?

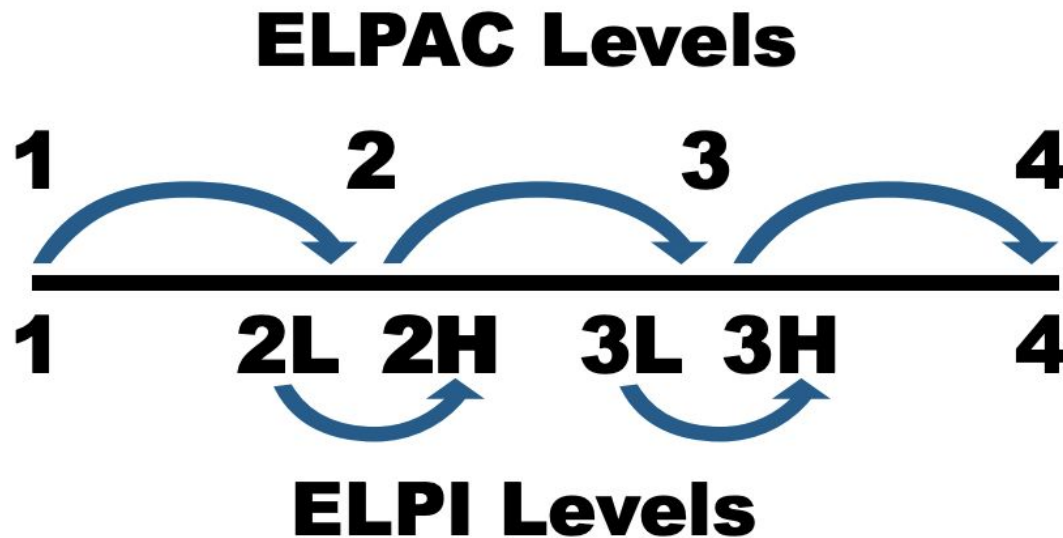


Topic 2

Q and A

Topic 2: State Measure

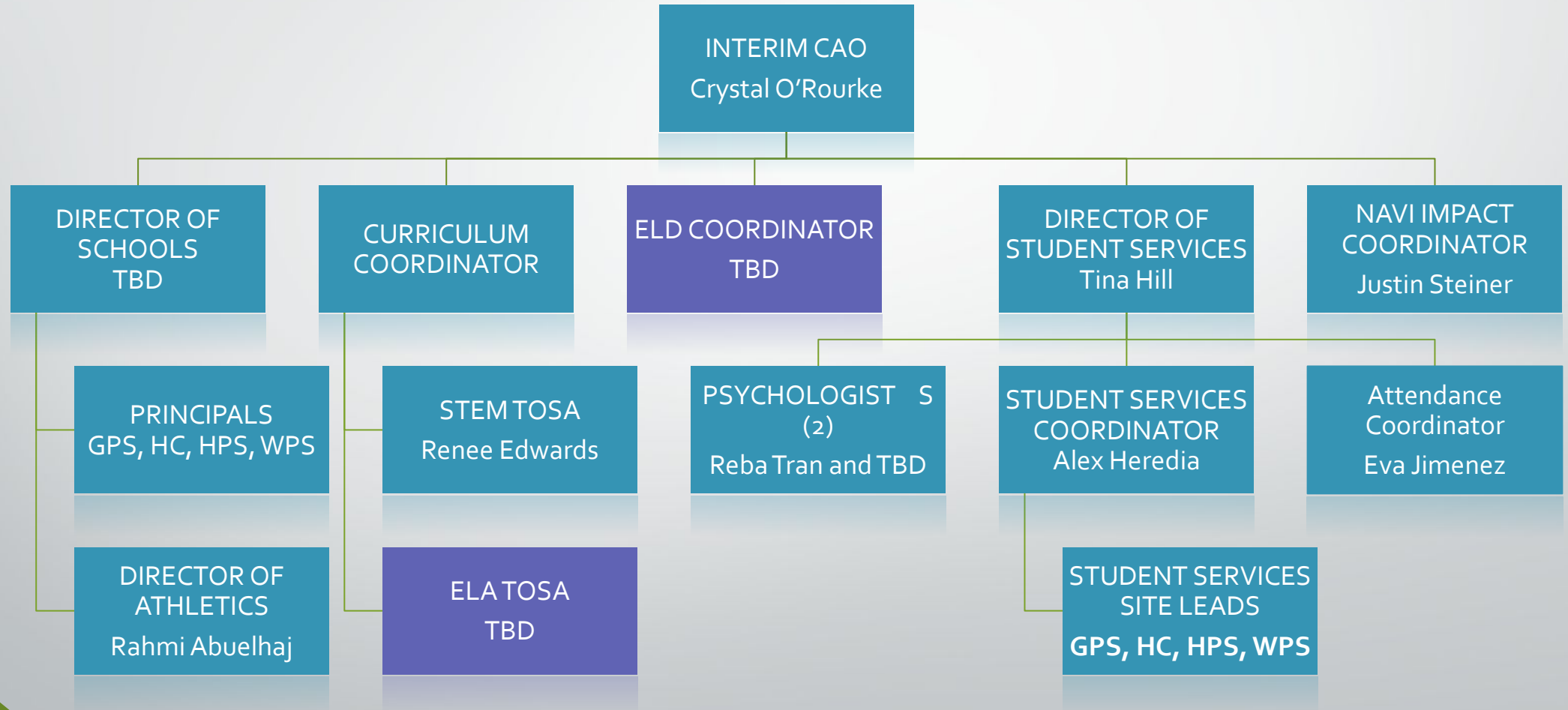
ELPAC given every year to English Learners. Grades 1-8 count toward our growth scores



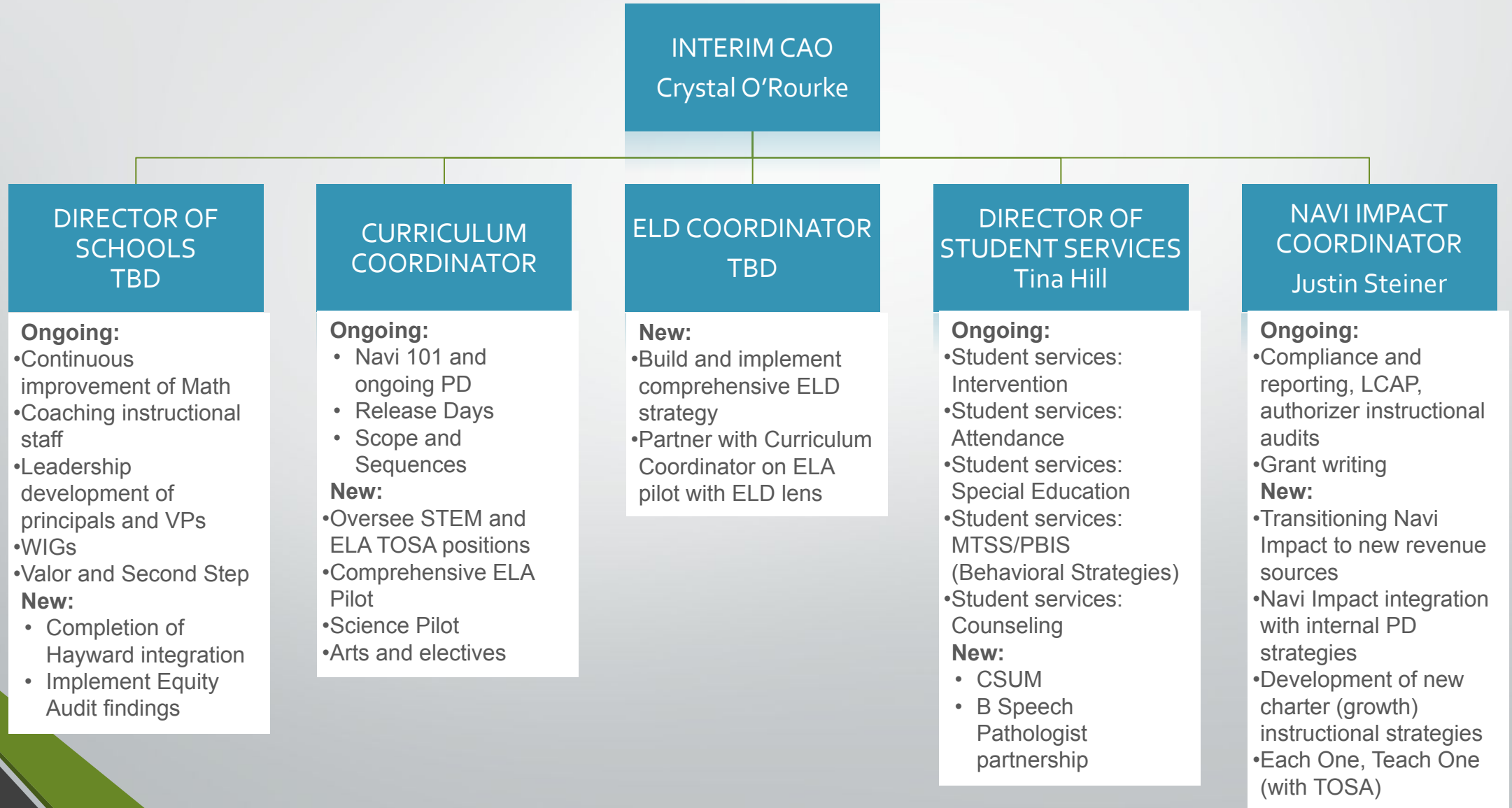


Topic 3: Staffing Update (so)

Navigator Schools Academic Team



Navigator Schools Academic Team – Roles and Responsibilities





Topic 3

Q and A

Thank You!



Navigator Schools

Charting a new course in education