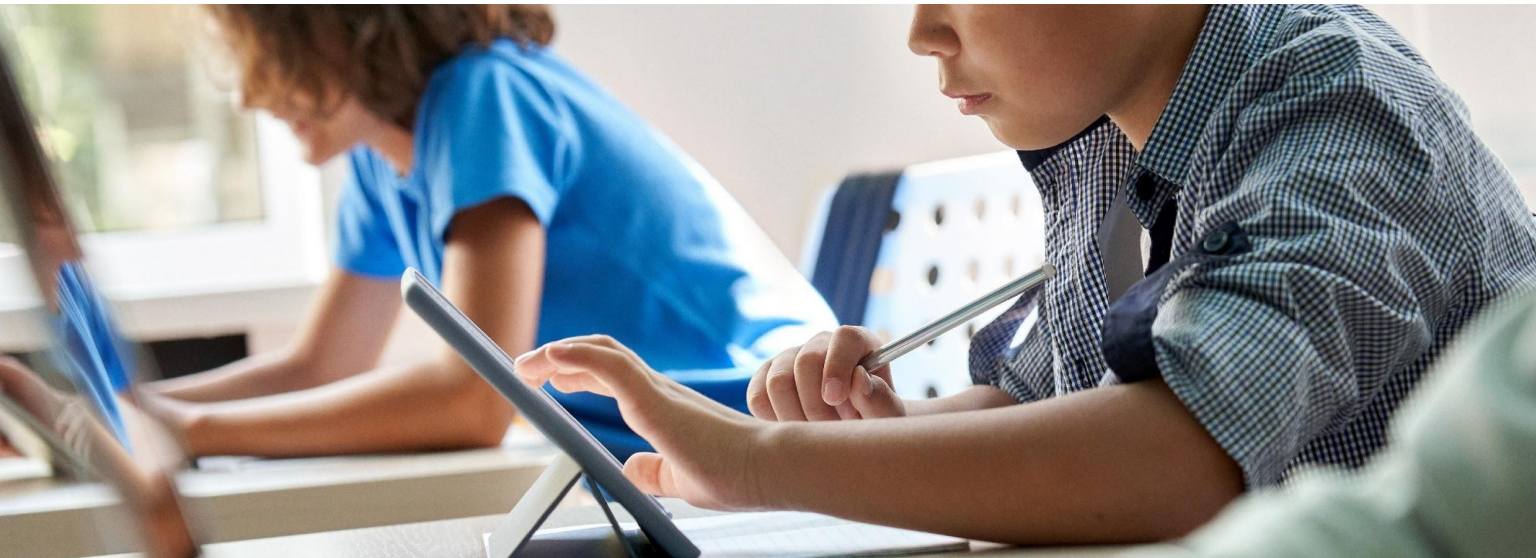


# Executive Summary – JD

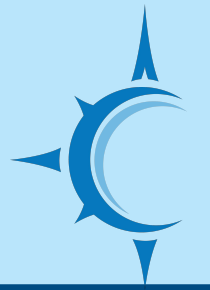
Navigator classrooms showed moderate gains again in Q2 data, especially in math. Large initiatives include prepping for the addition of additional TK classrooms across the network and an adoption of ELA for K-5.

## Today's Topics:

1. Q2 STAR Subgroup data (James)
2. Transitional Kindergarten (Crystal)
3. Update on Special Ed (Tina)
4. ELA Adoption Process (Crystal)



# Navi TK Vision



Navigator Transitional Kindergarten is a developmentally appropriate program designed to be the first half of a two-year kindergarten sequence. Recognizing the diverse needs of the four year-old, TK students find a nurturing “second home” in their classroom. TK students have substantial periods for play and exploration, with an emphasis on thematic learning opportunities that promote self-regulation, social-emotional growth and language development. At the same time, Navigator teachers working with TKs bring our expected level of focus and intentionality, promoting students’ early literacy and numeracy development and preparing them for kindergarten at Navigator. Individualized curriculum is a central part of our instructional program at Navigator and we expect this would continue in our TK class. Our TK teachers continually reflect on the development of each individual as a whole child and refine their support and instruction.

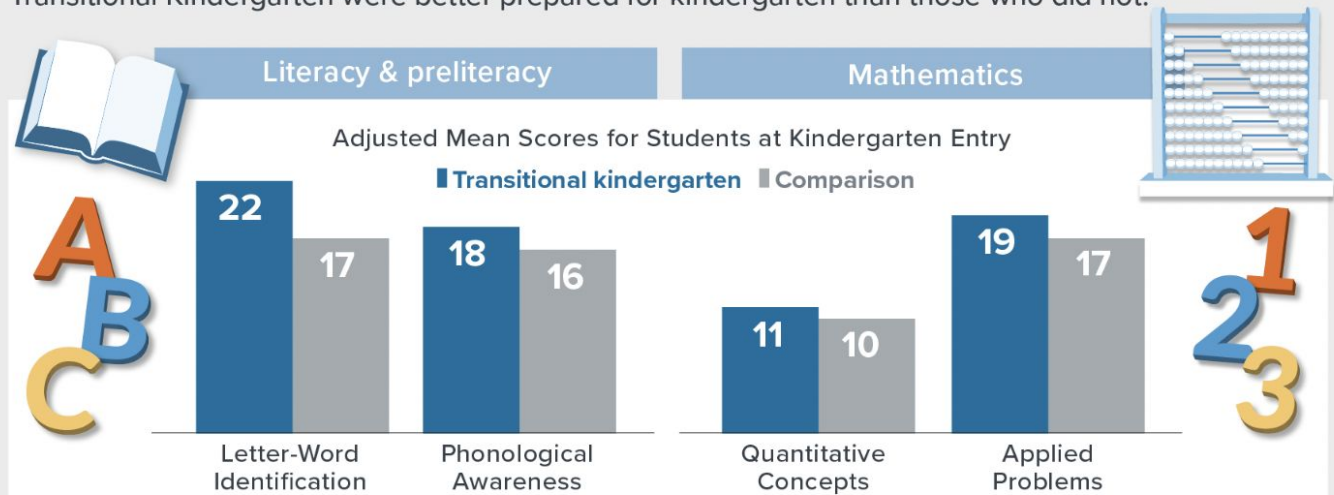
# Why TK at Navigator?

- Statewide initiative - TK required to be offered to all four year olds by 2025-26
- Current programs at WPS and HC
- [Research](#) on improving school readiness

\*The program shows an advantage for all students, with particular benefits for English learners and low-income students

## Does Transitional Kindergarten Improve School Readiness?

A study of California's Transitional Kindergarten program found that students who attended Transitional Kindergarten were better prepared for kindergarten than those who did not.



Note: Authors' analysis of student scores on the Woodcock-Johnson Letter-Word Identification, Applied Problems, and Quantitative Concepts test; Clinical Evaluation of Language Fundamentals Phonological Awareness test.



**Next steps:  
Plan for two new TK classes in  
2024-25 at GPS  
(HPS coming 2025-26)**

- LCAP
- Facilities
- Fiscal
- Academic Programming
- Student Services
- Staffing: Recruitment, Credentialing
- Student recruitment



## Topic 3: SPED Update

### Cross Country program review update

- Completed Observations and interviews with staff December 11th-13th, across all 4 campuses
- Collected data
- Report of findings to be received by January 29th
- Next steps -Present a summary



# Topic 4: ELA Adoption Update

**What: Navigator will be adopting a K-5 ELA curriculum to be piloted in Fall of 2024**

Why:

- Better alignment to research-based best practices (we are implementing many of these best practices already and we have also identified some areas that need improvement)
- Ease of implementation: Amount of time it is currently taking many teachers to create/prepare materials
- Integrated supports for students who are English Learners

Curriculum Committee responsibilities:

1. Select a Pilot Option
2. Monitor Progress (Review implementation, gather feedback and data to assess effectiveness)
3. Address Challenges
4. Develop a Roll-Out Plan
5. Evaluate Impact

\*Meet monthly: Feb-May 2024



## Topic 4: ELA Adoption Update

Navigator has always used curriculum as a starting point and not an end point. We are attempting to find the “best” starting point available to us in 2024 being the continuous improvers that we are!

- Programs for consideration: CKLA and EL Education
- Potential for consultant support

