



Date: May 6, 2022
To: Board of Directors of Navigator Schools
From: Kevin Sved, CEO
Subject: Expansion of Transitional Kindergarten

Summary

Watsonville Prep School (WPS) launched one class of Transitional Kindergarten (TK) in 2021-22. The program has been a great success in preparing children socially, emotionally, and academically for a rigorous kindergarten curriculum. With the additional availability of classrooms on the WPS campus and the state's expansion of TK beginning in 2022-23, it recommended that the Navigator Schools Board approve the expansion of TK at WPS to two TK classrooms for the 2022-23 school year.

Background

Beginning in 2014-15, children had to attain five years of age on or before September 1 to start kindergarten that school year. This was a change from the previous requirement that allowed children to enter kindergarten if they had their fifth birthday prior December 2. Concurrent with the changes in kindergarten age, the State of California began a transitional kindergarten (TK) program, which the California Department of Education describes as follows: "TK is the first year of a two-year kindergarten program that uses a modified kindergarten curriculum that is age and developmentally appropriate."

Most TK programs in California have prioritized students who are born between September 2 and December 2 because the regulations were designed to prioritize those students who would have, under the earlier kindergarten age requirements, been in kindergarten and were no longer eligible. The mechanism the state utilized to prioritize this group of students was to allocate average daily apportionment only to students who turned five between September 2 and December 2, or once the child turned five years of age. For example, a four-year-old student who turns five on December 1, could start a TK program on the first day of school in mid-August and the school would receive full funding for every day of that student's attendance from the beginning of the year. However, if a student turned five on December 2, then a school wouldn't be eligible for apportionment funding until the child turned five years of age.

When WPS launched its first year of TK in August 2021, enrollment was prioritized for children who turned five from September 1 to December 1. There were still openings available and in order to serve more students and to have a larger group of students receiving a high-quality TK program prior to their first year of K, we filled the class with children who were not yet eligible for attendance apportionment funding. The largest expense was the staffing cost, so serving more students even without receiving full funding was basically cost neutral.

With the expansion of universal TK, the state is extending funding by two additional months for the next several years. In 2022-23 schools will receive full funding for children who turn five on or before February 1. In 2023-24 it will be by April 1 and in 2024-25 it will be by June 1. In 2025-26 TK will exist for

all four-year-old children in California. TK expansion is a component of a larger statewide initiative referred to as [Universal Prekindergarten](#) which includes expansion of state preschool programs.

TK at Watsonville Prep School

TK students at Watsonville Prep School (WPS) have thrived. Compared to the average entering kindergartener, the average WPS TK student scores better on early reading skills like sound and letter recognition than the average entering WPS kindergarten student, and on average they are younger and still have a full year of kindergarten ahead of them! Furthermore, the development of social skills is also significant and measured closely by our TK staff through the use of the [Desired Results Development Profile](#) assessments. We look forward to comparing the academic and behavioral outcomes of students who have benefited from Navi TK to those who did not participate in Navi TK to determine the extent of the advantages of our investment in these early grades, but at this time it is clearly a great benefit.

Expanding TK at WPS

We designed the school facility at WPS without the foresight of TK expanding and only created one TK classroom. However, since we built out the facility for TK-8 and will only serve TK-5 in 2022-23, we will have extra classroom space in which we can operate a second TK class for 2022-23, 2023-24, and 2024-25, as we will not reach 8th grade until the 2025-26 school year. Andi UnuHernandez, Principal of WPS, requested that we consider utilizing the extra classroom space to operate an additional TK class beginning in 2022-23. The attached floor plan shows how the rooms can be reassigned to make the added TK classroom possible. Marty Hochroth, the architect on the 407 Main Street project, reviewed the codes and determined that the exiting pathways are sufficiently wide, and the only requirement would be to add “signage in the hallway outside Classroom 212 directing occupants towards the correct exits.”

From an enrollment and budget perspective, TK is full for 2022-23, with 13 students on the waitlist. We are confident that we would recover the expenses associated with the addition of the class, and the increased enrollment would immediately benefit children and families while also increasing the achievement levels of our future first- and second-grade students.

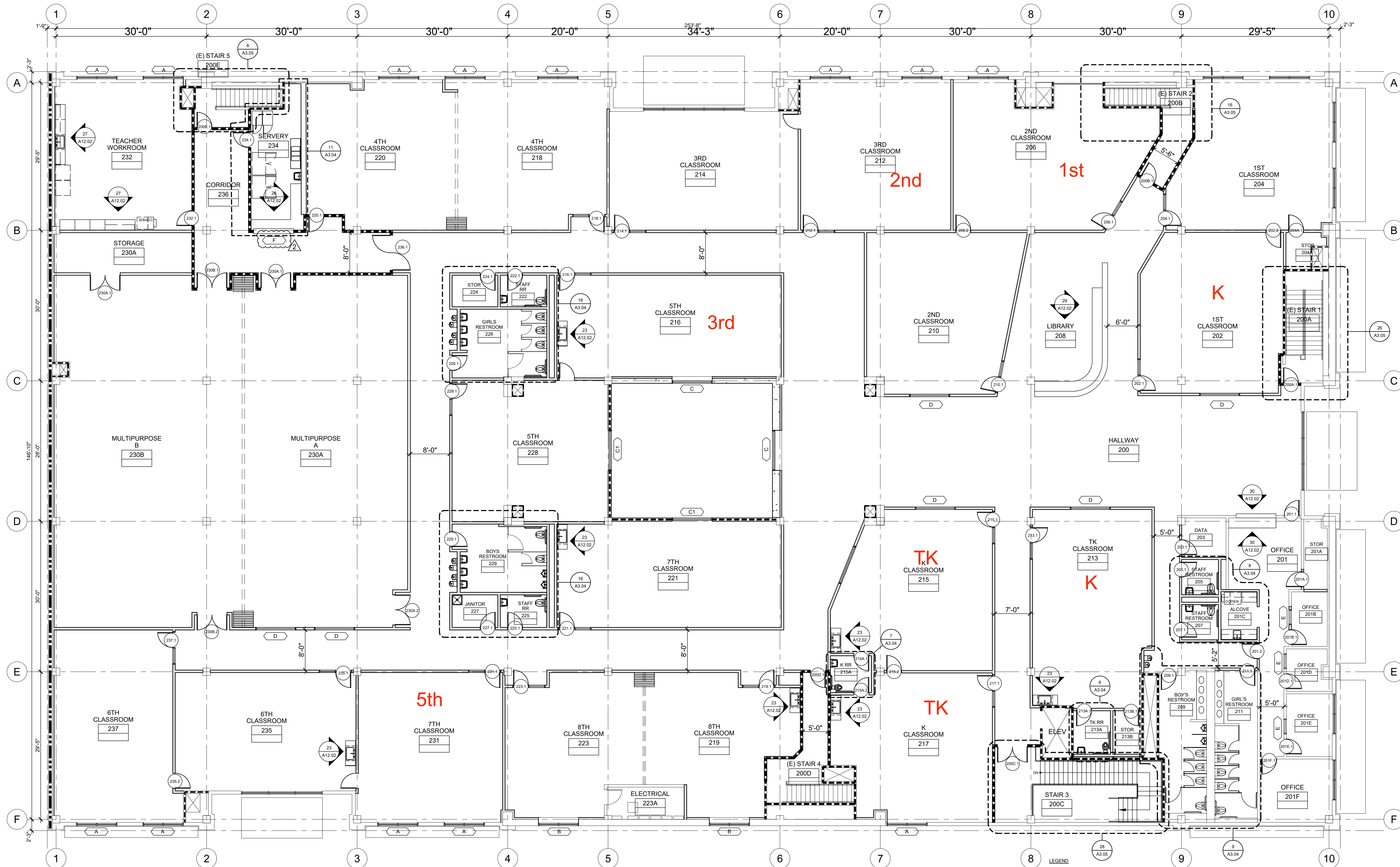
The main challenge in considering this is thinking ahead to the 2025-26 school year when our existing space will likely be unable to accommodate a second TK class. In the best-case scenario, we will be able to find a way to add an additional classroom in part of the downstairs area that is not yet programmed by the landlord. we might also be able to allocate space freed by implementing rotating schedules in middle school. In the worst-case scenario we would have to downsize to a single TK class in 2025-26.

Adding TK at Gilroy Prep and Hollister Prep

Navigator staff have initiated conversations with Gilroy Unified School District and Hollister School District about the desire to add TK at Gilroy Prep and Hollister Prep. Currently, facility limitations are the main barrier. We are pursuing funding through the Charter School Facilities Program as one pathway to address this challenge.

Recommendation

It is recommended that the Navigator Schools Board approve the expansion of TK at WPS to two TK classrooms for the 2022-23 school year.



GENERAL NOTES

- SEE 2/A12.01 FOR TYPICAL DOOR CLEARANCES
- SEE 3/A12.01 FOR TYPICAL FLOORING TRANSITIONS

LEGEND

	(E) PARTITION OR WALL
	(N) PARTITION - 3-5/8" METAL STUDS @ 16" O.C. W/5/8" GWB EA SIDE, U.N.O.
	1-HR RATED PARTITION - SEE 16/A7.01
	(E) 4 HR RATED WALL - 8" CMU
	(N) FURRING WALL - 3-5/8" METAL STUDS @ 16" O.C. W/5/8" GWB EA SIDE, U.N.O. W/19 INSULATION

Key Plan

Project Title

**NAVIGATOR SCHOOL
AT 407 MAIN ST**
407 MAIN STREET
WATSONVILLE CA
NAVIGATOR PUBLIC SCHOOLS

No	Revisions/Submissions	Date
1	ISSUED FOR PLANCHECK	09.11.20
2	BLDG DEPT COMMENTS	11.13.20
3	BLDG DEPT COMMENTS	12.17.20

Drawing Title

**SECOND FLOOR
PLAN**

Regulatory Agency Approval Architect Seal



File Number Drawing No

Application Number
605

A3.02

Project No.
181029