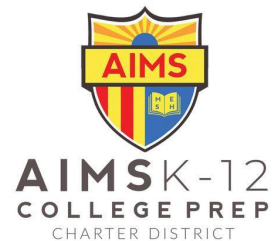


# Understanding Special Education at AIMS

April 2024

Deborah Woods



# Overview of Tier 3 Special Education Students

THIS YEAR

Apr 2024	IEPs
AIPCS II	30
Middle	19
High	17
<b>TOTAL</b>	<b>66</b>

*COMPARED  
TO*

LAST YEAR

Students w/ IEPs	April 2023
AIPCS II	26
Middle	18
High	13
<b>TOTAL*</b>	<b>57</b>

# Eligibility Demographics

<b>Students w/ Disabilities</b>	<b>AIPCS II</b>	<b>MS</b>	<b>HS</b>
<b>Intellectual Disability (ID)</b>	1	1	0
<b>Hard of Hearing (HH)</b>	1	1	0
<b>Speech (SLI)</b>	9	1	2
<b>Emotional Disturbance (ED)</b>	2	0	3
<b>Other Health Impairment (OHI)</b>	1	1	5
<b>Specific Learning Disability (SLD)</b>	5	9	7
<b>Autism (AUT)</b>	7	3	0
<b>To Be Determined (TBD)</b>	3	2	0
<b>TOTAL STUDENTS</b>	<b>30</b>	<b>19</b>	<b>17</b>

# Disability Identification Rate

Students with Disabilities	2020-21	2021-22	2022-2023	Oct 2023	Feb 2024	Apr 2024
AIPCS II	3.8	4.7	3.6	4.2	4.5	4.4
Middle School	6.3	5.1	9	7.5	9	9
High School	3.6	4	3.4	5.1	4.6	4.6
Total	4.2	4.5	4.4	5.1	5.3	5.3

# Grade Level Distribution

<b>Students w/ Disabilities: Grade Level</b>	
K	4
1	4
2	4
3	5
4	2
5	4
6	9
7	7
8	5
9	5
10	5
11	5
12	2
<b>Total*</b> not including students TBD	<b>61</b>

# Special Education Student Services Profile

<b>Special Education SERVICES</b>	<b>AIPCS II</b>	<b>Middle</b>	<b>High</b>	<b>Total</b>
<b>Specialized Academic Instruction(SAI)</b>	18	17	14	<b>49</b>
<b>Speech</b>	21	10	2	<b>33</b>
<b>Occupational Therapy (OT)</b>	2	0	0	<b>2</b>
<b>Counseling</b>	2	5	6	<b>13</b>
<b>Augmmentative Alternative Communication (AAC)</b>	2	0	0	<b>2</b>
<b>Behavior Intervention Services (BIS)</b>	1	1	0	<b>2</b>

# ELL Students with Disabilities

<b>Students w. Disabilities: ELLs</b>	<b>AIPCS II</b>	<b>MS</b>	<b>HS</b>
<b>TOTAL</b>	13	7	3
<b>Reclassified TY</b>	0	3	2

# Parent Resource Outreach

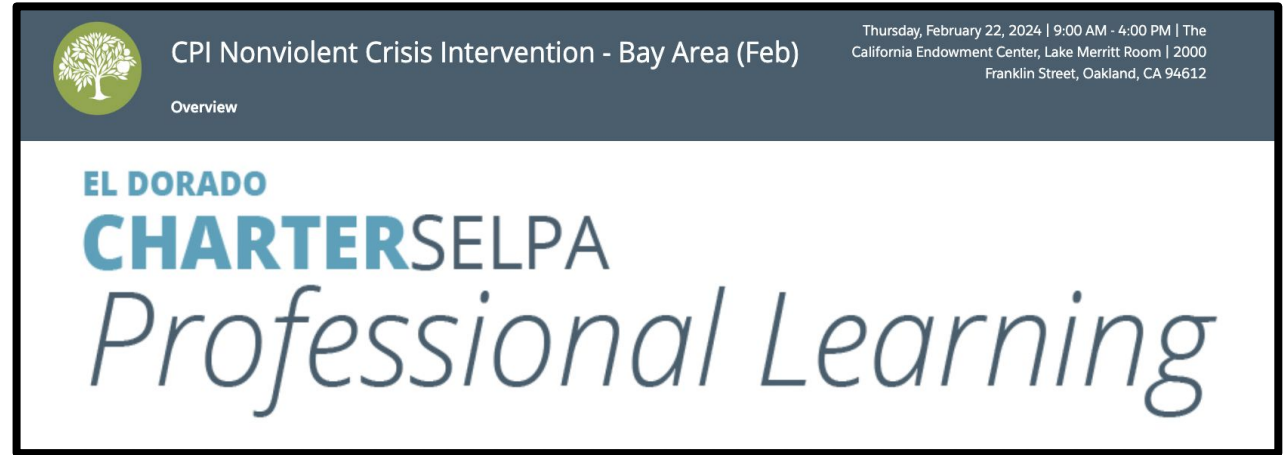
## Family Empowerment Centers

- Shared with Procedural Safeguards notice at all IEP meetings
- Featured monthly in AIMS Eagle Magazine
- Shared at Community Events: Back to School Night and Open House
- Linked on the AIMS Special Education Family Resource Webpage





# Staff Resources



## El Dorado Charter SELPA Professional Development Offerings

**CPI Nonviolent Crisis Intervention Training:** SpEd IAs, Gen Ed Site Admins, teachers and support staff to participate.

**Teacher Academy:** SpEd Teacher Intern

**Gen Ed PD:** 4.8.24 Ability Awareness with the elementary school teachers

# Successes

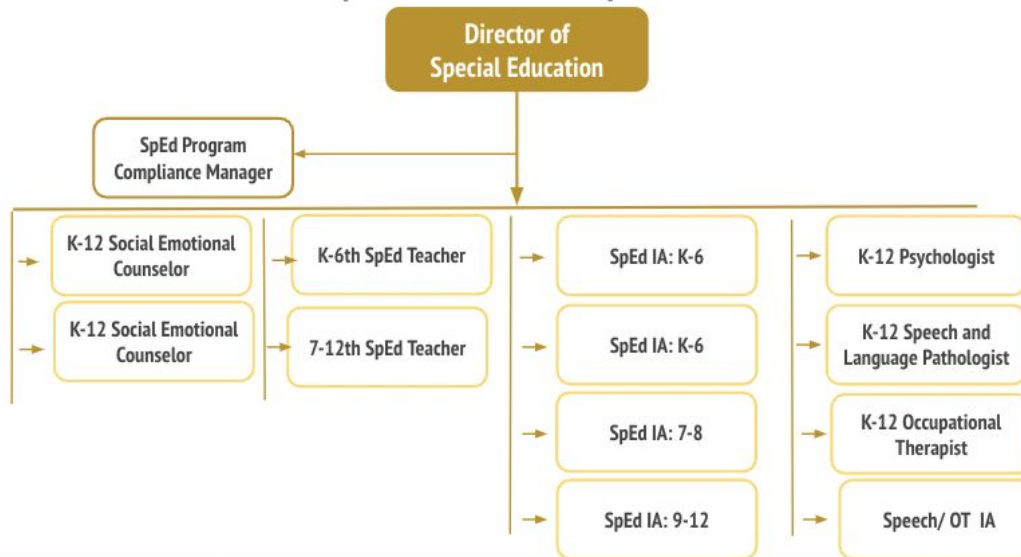
## Student Inclusion

- Student using AAC in class more consistently
- 2 previously with Gen Ed peers 5% daily. Now, at AIMS, with Gen Ed peers 83% of the day.



### AIMS Organizational Chart

#### Special Education Department



## New Staff

- **3 new SpEd IAs:** 2 with K-8. 1 at the high school
- **Psychologist**
- **Occupational Therapist**

# Questions or Clarifications?

**THANK YOU!**