



AIMS K-12 College Prep Charter District

AIMS Facilities Committee Meeting

Date and Time

Thursday May 13, 2021 at 5:00 PM PDT

Location

Join Zoom Meeting

<https://zoom.us/j/94628098135?pwd=eIQvbjg4MG91c2NCRTM4WVZMZjVuQT09>

Meeting ID: 946 2809 8135

Passcode: 786038

One tap mobile

+16699009128,,94628098135# US (San Jose)

+13462487799,,94628098135# US (Houston)

Dial by your location

+1 669 900 9128 US (San Jose)

+1 346 248 7799 US (Houston)

+1 253 215 8782 US (Tacoma)

+1 646 558 8656 US (New York)

+1 301 715 8592 US (Washington DC)

+1 312 626 6799 US (Chicago)

Meeting ID: 946 2809 8135

Find your local number: <https://zoom.us/u/aA4CArLDP>

AIMS does not discriminate on the basis of disability in the admission or access to, or treatment or employment in, its programs or activities. Marisol Magana has been designated to receive requests for disability-related modifications or accommodations in order to enable individuals with disabilities to participate in open and public

meetings at AIMS. Please notify Marisol Magana at (510) 220-9985 at least 24 hours in advance of any disability accommodations being needed in order to participate in the meeting. **Comments and questions should be entered into the chat feature of the Zoom meeting.**

Join Zoom meeting: <https://zoom.us/j/91993336791?pwd=UVNSNG9ONUFqUDhidHJuYUxwM3NPUT09>

Meeting I.D: 919 9333 6791

Passcode: 810183

Agenda

	Purpose	Presenter	Time
I. Opening Items			5:00 PM
Opening Items			
A.	Call the Meeting to Order		
B.	Record Attendance and Guests		
C.	Public comments on Non-agenda items	Discuss	5 m
	Public Comment on Non-Action Items is set aside for members of the Public to address the items on the Committee’s agenda prior to each agenda item. The Committee will not respond or take action in response to Public Comment, except that the Committee may ask clarifying questions or direct staff. Comments are limited to two (2) minutes per person, and a total time allotted for all public comment will not exceed twenty (20) minutes (10 minutes per section)		
D.	Public comments on Agenda items	Discuss	5 m
	Public Comment on Non-Action Items is set aside for members of the Public to address the items on the Committee’s agenda prior to each agenda item. The Committee will not respond or take action in response to Public Comment, except that the Committee may ask clarifying questions or direct staff. Comments are limited to two (2) minutes per person, and a total time allotted for all public comment will not exceed twenty (20) minutes (10 minutes per section)		
E.	Approval of the April 15, 2021 Special Facilities Committee Meeting Minutes	Approve Minutes	2 m
	Facilities Committee will consider approving the April 15, 2021 Special Facilities Committee Meeting Minutes.		

	Purpose	Presenter	Time
F. Approval of the March 11, 2021 Facilities Committee Meeting Minutes	Approve Minutes	Corey Hollis	2 m
II. Non-action Items			5:14 PM
A. Facilities Update	FYI	Marisol Magana	5 m
	<ul style="list-style-type: none"> • General Update of AIMS Facilities. • 3rd Floor Bathroom Renovation Updates. 		
III. Action Items			5:19 PM
A. 3 Day Blinds Solar Shades Quote	Vote	Tiffany Tung	5 m
	The Facilities Committee will consider approving 3 Day Blinds Solar Shades Quote.		
IV. Closed Session			5:24 PM
A. Public comments on Closed Session items	FYI		5 m
	<p>Public Comment on Closed Session Items is set aside for members of the Public to address the items in this section prior to closed session. The Committee will not respond or take action in response to <u>Public Comment, except that the Committee may ask clarifying questions or direct staff. Comments are limited to two (2) minutes per person, and a total time allotted for all public comment will not exceed twenty (20) minutes (10 minutes per section).</u></p>		
B. Recess to closed session	FYI		5 m
	<p>Closed Session Items:</p> <ol style="list-style-type: none"> 1. Conference with Real Property Negotiators (Gov. Code Section 54956.9) 2. Conference with Legal Counsel - Anticipated Litigation (Gov. Code Section 54956.9) 		
C. Reconvene from closed session	FYI		5 m

	Purpose	Presenter	Time
V. Report from closed session			
VI. Closing Items			5:39 PM
A. Items for next agenda	FYI		3 m
-			
-			
-			
B. Adjourn Meeting	Vote		
C. Notes	FYI	Corey Hollis	1 m

The next regular meeting of the Board of Directors is scheduled to be held on May 18, 2021, at 6:30 pm. AIMS does not discriminate on the basis of disability in the admission or access to, or treatment or employment in, its programs or activities. Marisol Magana has been designated to receive requests for disability-related modifications or accommodations in order to enable individuals with disabilities to participate in open and public meetings at AIMS. Please notify Marisol Magana at (510)220-9985 at least 24 hours in advance of any disability accommodations being needed in order to participate in the meeting.

I, Corey Hollis, hereby certify that I posted this agenda on the AIMS website at <https://www.aimsk12.org/board-directors> on, May 10, 2021, at 4:55 PM.

Certification of Posting

Coversheet

Approval of the April 15, 2021 Special Facilities Committee Meeting Minutes

Section: I. Opening Items
Item: E. Approval of the April 15, 2021 Special Facilities Committee Meeting Minutes
Purpose: Approve Minutes
Submitted by:
Related Material: Minutes for AIMS Special Facilities Committee Meeting on April 15, 2021

APPROVED



AIMS K-12 College Prep Charter District

Minutes

AIMS Special Facilities Committee Meeting

Date and Time

Thursday April 15, 2021 at 5:00 PM

Location

Teleconference Zoom Meeting

Meeting ID: 919 9333 6791

Passcode: 810183

One tap mobile

+16699009128,,91993336791# US (San Jose)

+13462487799,,91993336791# US (Houston)

Dial by your location

+1 669 900 9128 US (San Jose)

+1 346 248 7799 US (Houston)

+1 253 215 8782 US (Tacoma)

+1 301 715 8592 US (Washington DC)

+1 312 626 6799 US (Chicago)

+1 646 558 8656 US (New York)

Meeting ID: 919 9333 6791

Find your local number: <https://zoom.us/j/91993336791>

AIMS does not discriminate on the basis of disability in the admission or access to, or treatment or employment in, its programs or activities. Marisol Magana has been designated to receive requests for disability-related modifications or accommodations in order to enable individuals with disabilities to participate in open and public meetings at AIMS. Please notify Marisol

Magana at (510) 220-9985 at least 24 hours in advance of any disability accommodations being needed in order to participate in the meeting. **Comments and questions should be entered into the chat feature of the Zoom meeting.**

Join Zoom meeting: <https://zoom.us/j/91993336791?pwd=UVNSNG9ONUFqUDhidHJuYUxwM3NPUT09>

Meeting I.D: 919 9333 6791

Passcode: 810183

Committee Members Present

D. Lang (remote), M. Magana (remote), M. Woods-Cadiz (remote), S. Leung (remote)

Committee Members Absent

None

Guests Present

C. Hollis (remote)

I. Opening Items

A. Call the Meeting to Order

D. Lang called a meeting of the Facilities Committee Committee of AIMS K-12 College Prep Charter District to order on Thursday Apr 15, 2021 at 5:05 PM.

B. Record Attendance and Guests

C. Public comments on Non-action items

No public comment on Non-action items.

D. Public comments on Action items

No public comment on Action items.

II. Non-action Items

A. Facilities Update

Ms. Marisol Magaña presented item II.A. Facilities Update.

- AIMS facilities are open officially open for in-person instruction.
- Outstanding items presented to facilities.
 - 3rd floor bathroom renovations at AIMS 12th st. location still working out logistics. Plan to bring information regarding the renovations in May 2021.

- Working with OUSD to begin the process for bathroom renovations at the Lakeview campus.
- Currently in process to remove blinds at AIMS 12th st. location.

III. Action Items

A. Facilities Use Agreement for Lakeview Campus

Ms. Marisol Magaña presented item III.A. Facilities Use Agreement for Lakeview Campus.

- Click to view [Cover letter: Facilities Use Agreement \(FUA\).](#)
- Click to view [American Indian Public High School \(AIPHS\) Lakeview \(2021 - 23\) FUA Draft.](#)
- Click to view [Shaded Floorplan AIMS Lakeview.](#)
- Click to view [Shaded Parking lot for Basket Court.](#)
- The FUA cost estimation are based on Prop 39 rates.
- Requested additional space from Oakland Unified School District (OUSD).
 - All additional spaces are charged twice the prop 39 rate.
- Pursuing 2 year lease for the Lakeview campus.
- Bringing the FUA to AIMS committees and board for approval before presenting to OUSD in May.

S. Leung made a motion to approve item III.A Facilities Use Agreement for Lakeview Campus to add to the consent calendar for the AIMS Monthly Board meeting on April 20, 2021.

D. Lang seconded the motion.

The committee **VOTED** to approve the motion.

Roll Call

M. Magana	Abstain
M. Woods-Cadiz	Aye
S. Leung	Aye
D. Lang	Aye

IV. Closed Session

A. Public comments on Closed Session items

No public comment on closed session items.

B. Recess to closed session

C. Reconvene from closed session

V. Closing Items

A.

Items for next agenda

B. Adjourn Meeting

There being no further business to be transacted, and upon motion duly made, seconded and approved, the meeting was adjourned at 5:30 PM.

Respectfully Submitted,
D. Lang

C. Notes

Coversheet

Approval of the March 11, 2021 Facilities Committee Meeting Minutes

Section: I. Opening Items
Item: F. Approval of the March 11, 2021 Facilities Committee Meeting Minutes
Purpose: Approve Minutes
Submitted by:
Related Material: Minutes for Facility Committee Monthly Meeting on March 11, 2021

APPROVED



AIMS K-12 College Prep Charter District

Minutes

Facility Committee Monthly Meeting

Date and Time

Thursday March 11, 2021 at 5:00 PM

Location

Meeting ID: 922 1215 2054

Passcode: 350692

AIMS does not discriminate on the basis of disability in the admission or access to, or treatment or employment in, its programs or activities. Marisol Magana has been designated to receive requests for disability-related modifications or accommodations in order to enable individuals with disabilities to participate in open and public meetings at AIMS. Please notify Marisol Magana at (510) 220-9985 at least 24 hours in advance of any disability accommodations being needed in order to participate in the meeting. **Comments and questions should be entered into the chat feature of the Zoom meeting.**

<https://zoom.us/j/92212152054?pwd=M1NUdTEya0IFRC81RG9iL2xzSHhkZz09>

Committee Members Present

D. Lang (remote), M. Magana (remote), S. Leung (remote)

Committee Members Absent

None

Guests Present

T. Tung (remote)

I. Opening Items

A. Call the Meeting to Order

D. Lang called a meeting of the Facilities Committee Committee of AIMS K-12 College Prep Charter District to order on Thursday Mar 11, 2021 at 5:04 PM.

B. Record Attendance and Guests

C. Public comments on Non-action items

D. Public comments on Action items

II. Non-action Items

A. Facilities Update

AIMS has not established a re-open date.

- AIMS has received guidance from California State Governor's office on re-opening strategies
- AIMS is preparing to re-open when further guidance is given.

AIMS submitted a response letter for Prop 39 offer to Oakland Unified School District (OUSD) on March 1, 2021

- AIMS is in conversation with OUSD on potential offers of placement for AIMS locations.
- Offers will be finalized potentially in March. No official date given.

III. Action Items

A. American Indian Public High School - Round 15(A) - State Charter School Facilities Incentive Grants.

Director Marisol Magaña presented item III.A. American Indian Public High School - Round 15(A) - State Charter School Facilities Incentive Grant.

- The Facilities Incentive Grant will be used to fund AIMS High School rental fees.
- The deadline to accept or deny the grant is March 26, 2021.

S. Leung made a motion to Approve item III.A. Round 15(A) - State Charter School Facilities Incentive Grants.

D. Lang seconded the motion.

The committee **VOTED** to approve the motion.

Roll Call

S. Leung Aye
M. Magana Abstain
D. Lang Aye

B. Blinds Installation for American Indian Public High School

Tiffany Tung presented item III.B. Blinds Installation for American Indian Public School.

- Proposes to utilize general funds to purchase and install blinds for the AIMS High School Campus.
- The quoted cost from Three Day Blind is \$29,002.88.
- The purpose of the blinds is to increase ventilation and regulate the temperature in AIMS High School Campus buildings and rooms.
 - There is no central air conditioning unit at the AIMS High School so the blind aide in regulating the temperature in classrooms.
- **Point of Clarification from Director Steven Leung.**
 - Funding items over \$8,000.00 require three companies to bid on providing the service for AIMS.

S. Leung made a motion to Table item III.B Blinds Installation for American Indian Public High School to acquire two more bids from blinds installation service providers.

D. Lang seconded the motion.

The committee **VOTED** unanimously to approve the motion.

Roll Call

M. Magana Aye
D. Lang Aye
S. Leung Aye

C. Student Bathroom Upgrades for American Indian Public High School

Marisol presented item.

S. Leung made a motion to Approve item. III.C. Student Bathroom Upgrades for American Indian Public High School.

D. Lang seconded the motion.

The committee **VOTED** unanimously to approve the motion.

IV. Closed Session

A. Public comments on Closed Session items

Richard Cuthrell commented on AIMS Middle School is considering co-location at Franklin Elementary School.

- Opposes the AIMS K-12 College Prep Charter District co-location at Franklin Elementary School and urges the AIMS K-12 College Prep Charter District to not co-locate at Franklin Elementary School.

Jill Scharet commented on AIMS Middle School considering co-location at Franklin Elementary School.

- Opposes the AIMS K-12 College Prep Charter District Middle School co-location at Franklin Elementary School.

Elizabeth Pauw commented on AIMS Middle School considering co-location at Franklin Elementary School.

- Opposes the AIMS K-12 College Prep Charter District co-location at Franklin Elementary School.

B. Reconvene from closed session

V. Closing Items

A. Items for next agenda

- Tiffany Tung will collect quotes from two other vendors to provide service for item III.B. Blinds Installation for American Indian Public High School, and resubmit agenda item to the Facilities Committee Meeting.
- Update Facilities Committee meeting on AIMS 12th Street building 3rd floor bathroom renovation and window installation for AIMS Schools.

B. Adjourn Meeting

There being no further business to be transacted, and upon motion duly made, seconded and approved, the meeting was adjourned at 5:42 PM.

Respectfully Submitted,
D. Lang

C. Notes

Coversheet

Facilities Update

Section: II. Non-action Items
Item: A. Facilities Update
Purpose: FYI
Submitted by:
Related Material: Bathroom Bid Document.pdf
Bathroom Renovation (1).pdf

DOCUMENT 00104

NOTICE TO BIDDERS

- Notice is hereby given that the governing board (“Board”) of AIMS K-12 College Prep Charter District (“District” or “Owner”) will receive sealed bids for the following project (“Project” or “Contract”):

12th Street Campus Construction, Renovation and Modernization

- Sealed Bids will be received until **11:59 pm, May 15, 2021**, Via Email to maya.woods-cadiz@aimsk12.org at or after which time the bids will be opened and publicly read aloud. Any claim by a bidder of error in its bid must be made in compliance with section 5100 et seq. of the Public Contract Code.
- The Work of this Contract consists of the following:
 - Demolition of existing structures.
 - 3rd Floor Bathroom extension
 - Toilets and sink troughs (6 bathrooms)
 - Bathroom flooring (6 bathrooms)
 - Bathroom backsplash (6 bathrooms)
 - Bathroom Stall dividers (6 bathrooms)
 - Staff lounge construction
 - Painting
 - Electrical Update/HVAC

See attached floor plan.
- **Instruction to Bidders:**
 - a. Project must be completed by **July 15, 2021**.
 - b. Qualifications of contractor and project manager must be present in bid
 - c. Customer and project references must be included in bid
 - d. Local contractor preferred, others will be considered.
- To bid on this Project, the Bidder is required to possess one or more of the following State of California Contractor Licenses:

Class B – General Contractor License

The Bidder's license(s) must remain active and in good standing throughout the term of the Contract.

- A bid bond by an admitted surety insurer on the form provided by the District, cash, or a cashier's check or a certified check, drawn to the order of the American Indian Model Schools, in the amount of one million dollars, shall accompany the Bid Form and Proposal, as a guarantee that the Bidder will, within seven (7) calendar

days after the date of the Notice of Award, enter into a contract with the District for the performance of the services as stipulated in the bid.

- Pursuant to Public Contract Code Section 20111.5 [or Section 20111.6 (for contracts over \$1 million using state bond funds entered into after January 1, 2014), only prequalified bidders will be eligible to submit a bid for this Project. Any bid submitted by a bidder who is not prequalified shall be non-responsive and returned unopened to the bidder.
- The successful Bidder shall be required to furnish a 150 % Performance Bond and a 150% Payment Bond if it is awarded the contract for the Work.
- The successful Bidder may substitute securities for any monies withheld by the District to ensure performance under the Contract, in accordance with the provisions of section 22300 of the Public Contract Code.
- The Contractor and all Subcontractors under the Contractor shall pay all workers on all work performed pursuant to this Contract not less than the general prevailing rate of per diem wages and the general prevailing rate for holiday and overtime work as determined by the Director of the Department of Industrial Relations, State of California, for the type of work performed and the locality in which the work is to be performed within the boundaries of the District, pursuant to sections 1770 et seq. of the California Labor Code. Prevailing wage rates are also available from the District or on the Internet at: <<http://www.dir.ca.gov>
- A **MANDATORY** pre-bid conference and site visit will be held on **May 7, 2021**, at 10:00 a.m. at 171 12th Street Oakland, CA 94607. All participants are required to sign in front of the Administration Building. *Failure to attend or tardiness of more than 15 minutes will render bid ineligible.*
- Contract Documents are attached to this RFP
- The Board reserves the right to reject any and all bids and/or waive any irregularity in any bid received. If the District awards the Contract, the security of unsuccessful bidder(s) shall be returned within sixty (60) days from the time the award is made. Unless otherwise required by law, no bidder may withdraw its bid for ninety (90) days after the date of the bid opening.
- No contractor or subcontractor may be listed on a bid proposal for a public works project (submitted on or after March 1, 2015) unless registered with the Department of Industrial Relations pursuant to Labor Code section 1725.5 [with limited exceptions from this requirement for bid purposes only under Labor Code section 1771.1(a)].
- No contractor or subcontractor may be awarded a contract for public work on a public

AIMS K-12 College Prep Charter District
12th Street Campus Construction, Renovation and Modernization

NOTICE TO BIDDERS

works project (awarded on or after April 1, 2015) unless registered with the Department of Industrial Relations pursuant to Labor Code section 1725.5.

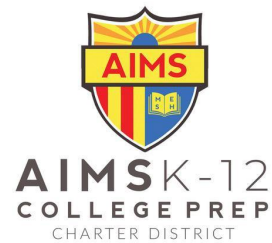
- The District shall award the Contract, if it awards it at all, to the lowest responsive responsible bidder based on:
 - The base bid amount only.

END OF DOCUMENT

*American Indian Model Schools
12th Street Campus Construction, Renovation and Modernization*

NOTICE TO BIDDERS

AIMS K-12 12th Street Bathroom Renovation



Work to be done

- 3rd Floor Bathroom extension
- Toilets and sink troughs
- Bathroom flooring (6 bathrooms)
- Bathroom wall splash
- Bathroom Stall dividers for all three floors
- Staff lounge cabinetry and sink
- Painting
- Electrical Update/HVAC


Estimated Pricing

- 3rd Floor Bathroom Renovation - \$160,000 - \$220,000
- Bathroom Partitions - Magnum Drywall \$70,053
- Bathroom Partitions - Service Metal Products \$79,410
- Sink troughs - \$24,000 - \$36,000
- Bathroom flooring - Luxor Flooring \$36,000

*Listed prices were obtained December 2019

Bathroom Renovation

- Need to finish the 3rd floor buildout
- Received a permit extension until 8/16/21
- Construction needs to be completed in order to receive occupancy permit for the 3rd floor. This is a requirement to ensure building code is met for educational setting.
- The plan was to do the construction during the summer and to budget for the expenditures under 2021-2022 budget.
- If we budget for this work our expenditures would be higher than our revenue.
- We need finance to recommend how we can proceed with funds for this project and maintain a fiscally healthy bottom line.



CITY OF OAKLAND
 250 FRANK H. OGAWA PLAZA • SUITE 2340 • OAKLAND, CALIFORNIA 94612-2031
 Planning & Building Department
 Bureau of Building
 Building Permits, Inspections and Code Enforcement Services

(510) 238-3444
 TDD:(510) 238-3254
 inspectioncounter@oaklandca.gov

PERMIT EXTENSION/REINSTATEMENT REQUEST

(Building, Electrical, Plumbing, Mechanical, Grading, Demolition)

JOBSITE ADDRESS 171 12th St. Oakland, CA Non-refundable fee *\$164.09 ^{x2}
(Previously collected permit fees are also non-refundable.)

PERMIT# B1903184, E1902295
(Multiple permits, please list all related permits)

PERMITTEE American Indian Model Schools PROPERTY OWNER American Indian Model Schools

ADDRESS 171 12th St. ADDRESS 171 12th St.

CITY/STATE Oakland, CA CITY/STATE Oakland, CA

TELEPHONE 510, 912-4045 TELEPHONE 510, 912-4045

Conditions

- A major inspection (foundation, underfloor, frame, or final) must be approved or partially approved within 12-months after its issuance and then every 180-days thereafter, or the permit will become invalid.
- Permits expire if the scope of work for which the permit is issued is not completed within 720 days.
- A permit extension or reinstatement may be granted, for justifiable cause, at the discretion of the Building Official.
- Granting of an extension or reinstatement does not include additional inspections.
- Extension/reinstatement requests for unrelated permits must be submitted separately and will be charged applicable fees.
- Permittee must obtain separate extensions from other departments for related permits and approvals (zoning, engineering services, parks and recreation, public works, fire prevention, etc.).
- Fee includes 9.5% Records Management Fee and 5.25% Technology Enhancement Fee
- Additional Impact Fees will be charged for projects failing to Final within 3-years from issuance of the building permit.

Reason for Extension/Reinstatement:
Buildout is still in progress due to COVID-19 pandemic challenges.

Permitted Signature: [Signature] Date: 2/1/2021

Office Use Only

Date Issued: 08-16-2019 Denied/Approved: [Signature]

Last Pass/Partial Inspection Date: 11-27-2019

Date Reviewed: 02-04-2021

Reviewer: [Signature]

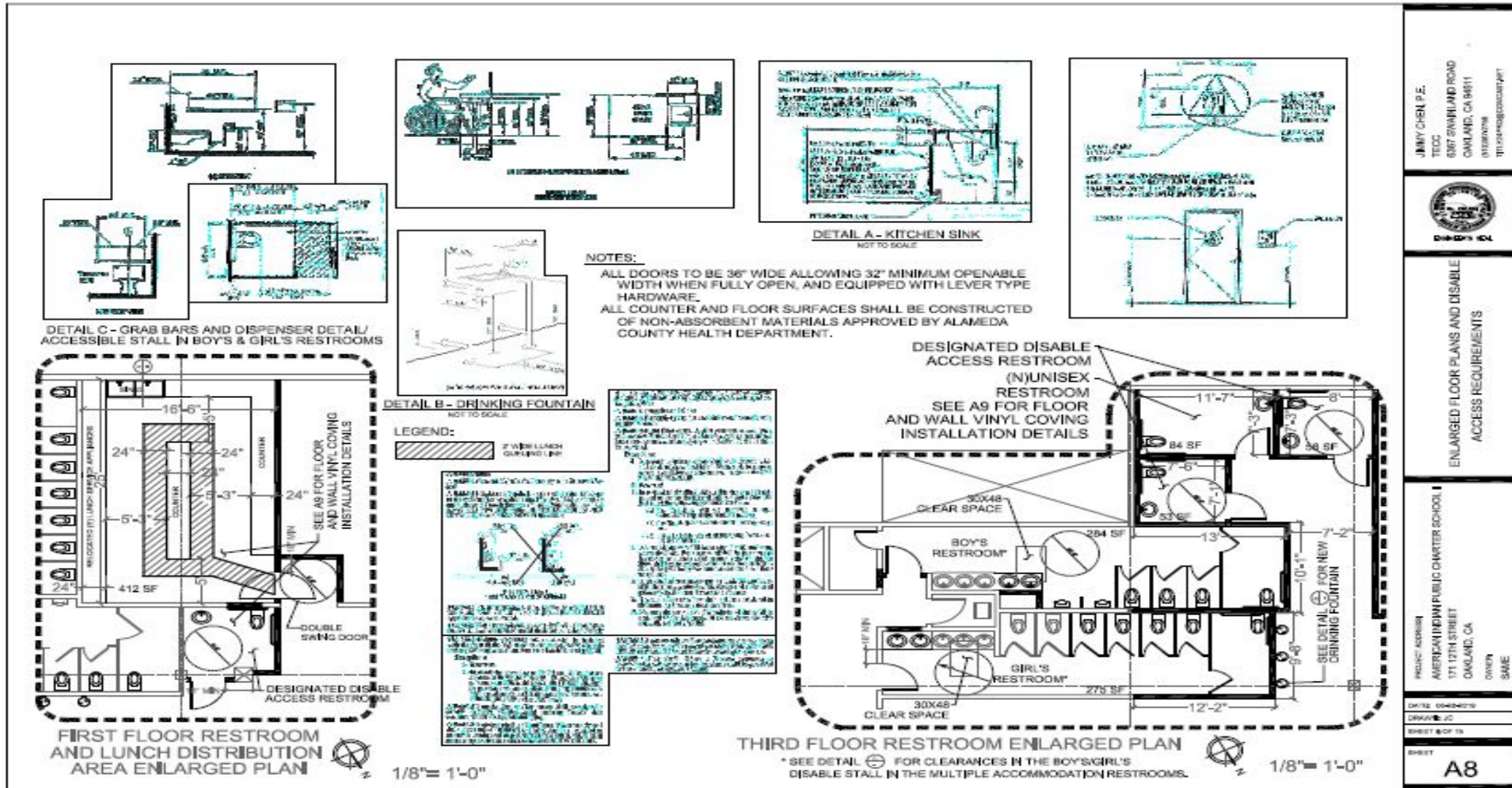
Inactivation/Expiration Date: 08-16-2020

Related Code Enforcement Case: 1903691-SCH11111

Permit #	Extension Deadline	# Inspections Remaining
1903184		
(R)B 1903184	08/16/2021	5
(R)E 1902295		2
1904447		
(R)P 1904447	↓	FINAL

*2x's Fee Due

3rd Floor Bathroom Extension Plan



JIMMY CHEN P.E.
TECC
6807 SWANLAND ROAD
OAKLAND, CA 94611
(916) 937-9700
jim@jimchencad.com

Design: JCL

ENLARGED FLOOR PLANS AND DISABLE ACCESS REQUIREMENTS

SCHOOL ADDRESS:
AMERICAN INDIAN PUBLIC CHARTER SCHOOL
171 17TH STREET
OAKLAND, CA
ON: 7
S: 8

DATE: 05/06/2021
DRAWN BY: JCL
SHEET # OF 15

SHEET
A8

Coversheet

3 Day Blinds Solar Shades Quote

Section: III. Action Items
Item: A. 3 Day Blinds Solar Shades Quote
Purpose: Vote
Submitted by:
Related Material: 3 Day Blinds Quote AIPHS.pdf
Rooms 10 and 16.pdf
All other rooms (2).pdf



AIMS Finance Committee Meeting Item Cover Letter

Item: 3 Day Blinds Solar Shades

Presented By: Tiffany Tung

Staff Recommendation:

Staff recommends to approve solar shades blind installation at AIPHS. Solar shades will repel the sunlight and protects against UV rays and easy to clean during COVID-19.

Committee Approval: N/A

Total Associated Cost: 34,568.13

Included in Budget? Yes

Funding Source: GE

Over/Under Budget?

Yes

Amount Over/Under Budget?

Included in LCAP? No

Which LCAP?

Order Details



Client Name: AMERICA INDIAN HIGH SCHOOL

Client Address: 746 GRAND AVE, OAKLAND, CA 94610

Client Phone: (510) 912-4045

Alternate Phone:

Installation Address: 746 GRAND AVE OAKLAND, CA 94610

Design Consultant: Liz Kennedy

Order Number: 325684

Delivery Address: 401 Sunset Dr. Suite H Lock Box Co Antioch, CA 94509

Delivery Contact: Steve Tafoya Window Coverings Contractors (Steve Tafoya)

Delivery Phone: (925) 470-3474

Estimated Installation On or Before: 06-04-2021

COVID-19 Update: Order may require 1-2 additional business days to arrive due to COVID-19 related delays.

Delivery dates represent expected service for the delivery and installation method selected. Delivery and installation dates may occasionally be impacted by weather, natural disasters, world events, unexpected material back orders or other unanticipated events.

Line 2	Product: ROLLER SHADE - CCL Model: SOLAR SCREENS Color: Merida 1% - Granite (120") Quantity: 1	Total: \$1,069.75
No Expediting FACTORY RESTRICTED Oversold NO Room Type OFFICE BUILDING Window # 16-A Side by Side Windows NO Mount Type INSIDE Cassette / Valance Type NONE Link System NO Operating Style STANDARD LIFT Control Position LEFT Control Length OVERRIDE DEFAULT	Control Length Override 100 CCL Chain Type BEADED - Metal - Silver - METAL Tension Pulley Color COLOR - Black - BLACK Components Color COMPONENT COLOR - Black - BLACK Bottom Rail Finish FABRIC WRAPPED Decorative Hem NO Special Order NO	Installer / Client Notes We are doing all windows with silver metal chains and black brackets and pulleys. Installing into Steel or Concrete YES Top of Window over 10' from Floor YES Enter Height (in Feet) from Floor to Top 12 Is Window in a Stairway NO Is this a Ceiling Mount YES Are there currently treatments in the window NO

Line 3	Product: ROLLER SHADE - CCL Model: SOLAR SCREENS Color: Merida 1% - Granite (120") Quantity: 1	Total: \$1,069.75
No Expediting FACTORY RESTRICTED Oversold NO Room Type OFFICE BUILDING		

Window # 16-B	CCL Chain Type BEADED - Metal - Silver - METAL	Installer / Client Notes
Side by Side Windows NO		Installing into Steel or Concrete YES
Mount Type INSIDE	Tension Pulley Color COLOR - Black - BLACK	Top of Window over 10' from Floor YES
Cassette / Valance Type NONE		Enter Height (in Feet) from Floor to Top 12
Link System NO	Components Color COMPONENT COLOR - Black - BLACK	Is Window in a Stairway NO
Operating Style STANDARD LIFT		Is this a Ceiling Mount YES
Control Position RIGHT	Bottom Rail Finish FABRIC WRAPPED	Are there currently treatments in the window NO
Control Length OVERRIDE DEFAULT	Decorative Hem NO	
Control Length Override 100	Special Order NO	

Line 4

Product: ROLLER SHADE - CCL
Model: SOLAR SCREENS
Color: Merida 1% - Granite (120")
Quantity: 1 **Total:** \$1,069.75

No Expediting FACTORY RESTRICTED	Control Length OVERRIDE DEFAULT	Special Order NO
Oversold NO	Control Length Override 100	Installer / Client Notes
Room Type OFFICE BUILDING	CCL Chain Type BEADED - Metal - Silver - METAL	Installing into Steel or Concrete YES
Window # 10-A		Top of Window over 10' from Floor YES
Side by Side Windows NO	Tension Pulley Color COLOR - Black - BLACK	Enter Height (in Feet) from Floor to Top 12
Mount Type INSIDE		Is Window in a Stairway NO
Cassette / Valance Type NONE	Components Color COMPONENT COLOR - Black - BLACK	Is this a Ceiling Mount YES
Link System NO		Are there currently treatments in the window NO
Operating Style STANDARD LIFT	Bottom Rail Finish FABRIC WRAPPED	
Control Position LEFT	Decorative Hem NO	

Line 5

Product: ROLLER SHADE - CCL
Model: SOLAR SCREENS
Color: Merida 1% - Granite (120")
Quantity: 1 **Total:** \$1,069.75

No Expediting FACTORY RESTRICTED	Control Length OVERRIDE DEFAULT	Special Order NO
Oversold NO	Control Length Override 100	Installer / Client Notes
Room Type OFFICE BUILDING	CCL Chain Type BEADED - Metal - Silver - METAL	Installing into Steel or Concrete YES
Window # 10-B		Top of Window over 10' from Floor YES
Side by Side Windows NO	Tension Pulley Color COLOR - Black - BLACK	Enter Height (in Feet) from Floor to Top 12
Mount Type INSIDE		Is Window in a Stairway NO
Cassette / Valance Type NONE	Components Color COMPONENT COLOR - Black - BLACK	Is this a Ceiling Mount YES
Link System NO		Are there currently treatments in the window NO
Operating Style STANDARD LIFT	Bottom Rail Finish FABRIC WRAPPED	
Control Position RIGHT	Decorative Hem NO	

Order Summary:

Product Total	\$4,279.00
Packaging and Handling	\$584.00
Installation Charge	\$848.96
Sales Tax	\$449.86
Total Contract Price	\$6,161.82
Downpayment Received	\$0.00

Balance Due \$6,161.82

Total Discounts Applied \$1,409.00

Order Details

Client Name: AMERICAN INDIAN HIGH SCHOOL



Client Address: 746 GRAND AVE, OAKLAND, CA 94610

Client Phone: (510) 912-4045

Alternate Phone:

Installation Address: 746 Grand Ave Oakland, CA 94610

Design Consultant: Liz Kennedy

Order Number: 156712

Delivery Address: 401 Sunset Dr. Suite H Lock Box Co Antioch, CA 94509

Delivery Contact: Steve Tafoya Window Coverings Contractors (Steve Tafoya)

Delivery Phone: (925) 470-3474

Estimated Installation On or Before: 06-04-2021

COVID-19 Update: Order may require 1-2 additional business days to arrive due to COVID-19 related delays.

Delivery dates represent expected service for the delivery and installation method selected. Delivery and installation dates may occasionally be impacted by weather, natural disasters, world events, unexpected material back orders or other unanticipated events.

Line 2	<p>Product: ROLLER SHADE - CCL Model: SOLAR SCREENS Color: Merida 1% - Granite (120") Quantity: 1</p>	<p>Total: \$798.50</p>
<p>Room Type OFFICE BUILDING Window # OFF-1 Side by Side Windows NO Mount Type INSIDE Cassette / Valance Type NONE Link System NO Operating Style STANDARD LIFT Control Position RIGHT Control Length OVERRIDE DEFAULT Control Length Override 110</p>	<p>CCL Chain Type BEADED - Metal - Silver - METAL Tension Pulley Color COLOR - Black - BLACK Components Color COMPONENT COLOR - Black - BLACK Bottom Rail Finish FABRIC WRAPPED Decorative Hem NO Special Order NO</p>	<p>Installer / Client Notes We are doing all windows with silver metal chains and black brackets and pulleys. Installing into Steel or Concrete YES Top of Window over 10' from Floor YES Enter Height (in Feet) from Floor to Top 12 Is Window in a Stairway NO Is this a Ceiling Mount YES Are there currently treatments in the window NO</p>

Line 3	<p>Product: ROLLER SHADE - CCL Model: SOLAR SCREENS Color: Merida 1% - Granite (120") Quantity: 1</p>	<p>Total: \$798.50</p>
<p>Room Type OFFICE BUILDING Window # OFF-2</p>	<p>Side by Side Windows NO Mount Type INSIDE</p>	<p>Cassette / Valance Type NONE Link System NO</p>

Operating Style STANDARD LIFT	Components Color COMPONENT COLOR - Black - BLACK	Enter Height (in Feet) from Floor to Top 12 Is Window in a Stairway NO
Control Position RIGHT	Bottom Rail Finish FABRIC WRAPPED	Is this a Ceiling Mount YES
Control Length OVERRIDE DEFAULT	Decorative Hem NO	Are there currently treatments in the window NO
Control Length Override 110	Special Order NO	
CCL Chain Type BEADED - Metal - Silver - METAL	Installer / Client Notes	
Tension Pulley Color COLOR - Black - BLACK	Installing into Steel or Concrete NO	
	Top of Window over 10' from Floor YES	

Line 4

Product: ROLLER SHADE - CCL
Model: SOLAR SCREENS
Color: Merida 1% - Granite (120")
Quantity: 1 **Total:** \$1,045.41

Room Type OFFICE BUILDING	Control Length Override 110	Special Order NO
Window # 1-A	CCL Chain Type BEADED - Metal - Silver - METAL	Installer / Client Notes
Side by Side Windows NO	Tension Pulley Color COLOR - Black - BLACK	Installing into Steel or Concrete YES
Mount Type INSIDE	Decorative Hem NO	Top of Window over 10' from Floor YES
Cassette / Valance Type NONE	Components Color COMPONENT COLOR - Black - BLACK	Enter Height (in Feet) from Floor to Top 12 Is Window in a Stairway NO
Link System NO	Bottom Rail Finish FABRIC WRAPPED	Is this a Ceiling Mount YES
Operating Style STANDARD LIFT	Decorative Hem NO	Are there currently treatments in the window NO
Control Position LEFT		
Control Length OVERRIDE DEFAULT		

Line 5

Product: ROLLER SHADE - CCL
Model: SOLAR SCREENS
Color: Merida 1% - Granite (120")
Quantity: 1 **Total:** \$1,045.41

Room Type OFFICE BUILDING	Control Length Override 110	Special Order NO
Window # 1-B	CCL Chain Type BEADED - Metal - Silver - METAL	Installer / Client Notes
Side by Side Windows NO	Tension Pulley Color COLOR - Black - BLACK	Installing into Steel or Concrete YES
Mount Type INSIDE	Decorative Hem NO	Top of Window over 10' from Floor YES
Cassette / Valance Type NONE	Components Color COMPONENT COLOR - Black - BLACK	Enter Height (in Feet) from Floor to Top 12 Is Window in a Stairway NO
Link System NO	Bottom Rail Finish FABRIC WRAPPED	Is this a Ceiling Mount YES
Operating Style STANDARD LIFT	Decorative Hem NO	Are there currently treatments in the window NO
Control Position RIGHT		
Control Length OVERRIDE DEFAULT		

Line 6

Product: ROLLER SHADE - CCL
Model: SOLAR SCREENS
Color: Merida 1% - Granite (120")
Quantity: 1 **Total:** \$1,045.41

Room Type OFFICE BUILDING	Control Length OVERRIDE DEFAULT	Bottom Rail Finish FABRIC WRAPPED
Window # 2-A	Control Length Override 110	Decorative Hem NO
Side by Side Windows NO	CCL Chain Type BEADED - Metal - Silver - METAL	Special Order NO
Mount Type INSIDE	Tension Pulley Color COLOR - Black - BLACK	Installer / Client Notes
Cassette / Valance Type NONE	Decorative Hem NO	Installing into Steel or Concrete YES
Link System NO	Components Color COMPONENT COLOR - Black - BLACK	Top of Window over 10' from Floor YES
Operating Style STANDARD LIFT		Enter Height (in Feet) from Floor to Top 12 Is Window in a Stairway NO
Control Position LEFT		

Is this a Ceiling Mount YES

Are there currently treatments in the window NO

Line 7

Product: ROLLER SHADE - CCL**Model:** SOLAR SCREENS**Color:** Merida 1% - Granite (120")**Quantity:** 1**Total:** \$1,045.41

Room Type OFFICE BUILDING

Window # 2-B

Side by Side Windows NO

Mount Type INSIDE

Cassette / Valance Type NONE

Link System NO

Operating Style STANDARD LIFT

Control Position RIGHT

Control Length OVERRIDE DEFAULT

Control Length Override 110

CCL Chain Type BEADED - Metal - Silver - METAL

Tension Pulley Color COLOR - Black - BLACK

Components Color COMPONENT COLOR - Black - BLACK

Bottom Rail Finish FABRIC WRAPPED

Decorative Hem NO

Special Order NO

Installer / Client Notes

Installing into Steel or Concrete YES

Top of Window over 10' from Floor YES

Enter Height (in Feet) from Floor to Top 12

Is Window in a Stairway NO

Is this a Ceiling Mount YES

Are there currently treatments in the window NO

Line 8

Product: ROLLER SHADE - CCL**Model:** SOLAR SCREENS**Color:** Merida 1% - Granite (120")**Quantity:** 1**Total:** \$1,045.41

Room Type OFFICE BUILDING

Window # 3-A

Side by Side Windows NO

Mount Type INSIDE

Cassette / Valance Type NONE

Link System NO

Operating Style STANDARD LIFT

Control Position LEFT

Control Length OVERRIDE DEFAULT

Control Length Override 110

CCL Chain Type BEADED - Metal - Silver - METAL

Tension Pulley Color COLOR - Black - BLACK

Components Color COMPONENT COLOR - Black - BLACK

Bottom Rail Finish FABRIC WRAPPED

Decorative Hem NO

Special Order NO

Installer / Client Notes

Installing into Steel or Concrete YES

Top of Window over 10' from Floor YES

Enter Height (in Feet) from Floor to Top 12

Is Window in a Stairway NO

Is this a Ceiling Mount YES

Are there currently treatments in the window NO

Line 9

Product: ROLLER SHADE - CCL**Model:** SOLAR SCREENS**Color:** Merida 1% - Granite (120")**Quantity:** 1**Total:** \$1,045.41

Room Type OFFICE BUILDING

Window # 3-B

Side by Side Windows NO

Mount Type INSIDE

Cassette / Valance Type NONE

Link System NO

Operating Style STANDARD LIFT

Control Position RIGHT

Control Length OVERRIDE DEFAULT

Control Length Override 110

CCL Chain Type BEADED - Metal - Silver - METAL

Tension Pulley Color COLOR - Black - BLACK

Components Color COMPONENT COLOR - Black - BLACK

Bottom Rail Finish FABRIC WRAPPED

Decorative Hem NO

Special Order NO

Installer / Client Notes

Installing into Steel or Concrete YES

Top of Window over 10' from Floor YES

Enter Height (in Feet) from Floor to Top 12

Is Window in a Stairway NO

Is this a Ceiling Mount YES

Are there currently treatments in the window NO

Line 10

Product: ROLLER SHADE - CCL**Model:** SOLAR SCREENS**Color:** Merida 1% - Granite (120")**Quantity:** 1**Total:** \$1,045.41

Room Type OFFICE BUILDING
 Window # 4-A
 Side by Side Windows NO
 Mount Type INSIDE
 Cassette / Valance Type NONE
 Link System NO
 Operating Style STANDARD LIFT
 Control Position LEFT
 Control Length OVERRIDE DEFAULT

Control Length Override 110
 CCL Chain Type BEADED - Metal - Silver - METAL
 Tension Pulley Color COLOR - Black - BLACK
 Components Color COMPONENT COLOR - Black - BLACK
 Bottom Rail Finish FABRIC WRAPPED
 Decorative Hem NO

Special Order NO
 Installer / Client Notes
 Installing into Steel or Concrete YES
 Top of Window over 10' from Floor YES
 Enter Height (in Feet) from Floor to Top 12
 Is Window in a Stairway NO
 Is this a Ceiling Mount YES
 Are there currently treatments in the window NO

Line 11

Product: ROLLER SHADE - CCL
Model: SOLAR SCREENS
Color: Merida 1% - Granite (120")
Quantity: 1

Total: \$1,045.41

Room Type OFFICE BUILDING
 Window # 4-B
 Side by Side Windows NO
 Mount Type INSIDE
 Cassette / Valance Type NONE
 Link System NO
 Operating Style STANDARD LIFT
 Control Position RIGHT
 Control Length OVERRIDE DEFAULT

Control Length Override 110
 CCL Chain Type BEADED - Metal - Silver - METAL
 Tension Pulley Color COLOR - Black - BLACK
 Components Color COMPONENT COLOR - Black - BLACK
 Bottom Rail Finish FABRIC WRAPPED
 Decorative Hem NO

Special Order NO
 Installer / Client Notes
 Installing into Steel or Concrete YES
 Top of Window over 10' from Floor YES
 Enter Height (in Feet) from Floor to Top 12
 Is Window in a Stairway NO
 Is this a Ceiling Mount YES
 Are there currently treatments in the window NO

Line 12

Product: ROLLER SHADE - CCL
Model: SOLAR SCREENS
Color: Merida 1% - Granite (120")
Quantity: 1

Total: \$277.67

Room Type OFFICE BUILDING
 Window # OFF-3
 Side by Side Windows NO
 Mount Type INSIDE
 Cassette / Valance Type NONE
 Link System NO
 Operating Style STANDARD LIFT
 Control Position RIGHT
 Control Length OVERRIDE DEFAULT

Control Length Override 95
 CCL Chain Type BEADED - Metal - Silver - METAL
 Tension Pulley Color COLOR - Black - BLACK
 Components Color COMPONENT COLOR - Black - BLACK
 Bottom Rail Finish FABRIC WRAPPED
 Decorative Hem NO

Special Order NO
 Installer / Client Notes
 Installing into Steel or Concrete YES
 Top of Window over 10' from Floor YES
 Enter Height (in Feet) from Floor to Top 12
 Is Window in a Stairway NO
 Is this a Ceiling Mount YES
 Are there currently treatments in the window NO

Line 13

Product: ROLLER SHADE - CCL
Model: SOLAR SCREENS
Color: Merida 1% - Granite (120")
Quantity: 1

Total: \$1,045.41

Room Type OFFICE BUILDING
 Window # 5-A
 Side by Side Windows NO
 Mount Type INSIDE
 Cassette / Valance Type NONE
 Link System NO

Operating Style STANDARD LIFT
 Control Position LEFT
 Control Length OVERRIDE DEFAULT
 Control Length Override 110
 CCL Chain Type BEADED - Metal - Silver - METAL

Tension Pulley Color COLOR - Black - BLACK
 Components Color COMPONENT COLOR - Black - BLACK
 Bottom Rail Finish FABRIC WRAPPED
 Decorative Hem NO

Special Order NO	Top of Window over 10' from Floor YES	Is this a Ceiling Mount YES
Installer / Client Notes	Enter Height (in Feet) from Floor to Top 12	Are there currently treatments in the window NO
Installing into Steel or Concrete YES	Is Window in a Stairway NO	

Line 14

Product: ROLLER SHADE - CCL
Model: SOLAR SCREENS
Color: Merida 1% - Granite (120")
Quantity: 1

Total: \$1,045.41

Room Type OFFICE BUILDING	Control Length Override 110	Special Order NO
Window # 5-B	CCL Chain Type BEADED - Metal - Silver - METAL	Installer / Client Notes
Side by Side Windows NO	Tension Pulley Color COLOR - Black - BLACK	Installing into Steel or Concrete YES
Mount Type INSIDE	Components Color COMPONENT COLOR - Black - BLACK	Top of Window over 10' from Floor YES
Cassette / Valance Type NONE	Bottom Rail Finish FABRIC WRAPPED	Enter Height (in Feet) from Floor to Top 12
Link System NO	Decorative Hem NO	Is Window in a Stairway NO
Operating Style STANDARD LIFT		Is this a Ceiling Mount YES
Control Position RIGHT		Are there currently treatments in the window NO
Control Length OVERRIDE DEFAULT		

Line 15

Product: ROLLER SHADE - CCL
Model: SOLAR SCREENS
Color: Merida 1% - Granite (120")
Quantity: 1

Total: \$1,045.41

Room Type OFFICE BUILDING	Control Length Override 110	Special Order NO
Window # 15-A	CCL Chain Type BEADED - Metal - Silver - METAL	Installer / Client Notes
Side by Side Windows NO	Tension Pulley Color COLOR - Black - BLACK	Installing into Steel or Concrete YES
Mount Type INSIDE	Components Color COMPONENT COLOR - Black - BLACK	Top of Window over 10' from Floor YES
Cassette / Valance Type NONE	Bottom Rail Finish FABRIC WRAPPED	Enter Height (in Feet) from Floor to Top 12
Link System NO	Decorative Hem NO	Is Window in a Stairway NO
Operating Style STANDARD LIFT		Is this a Ceiling Mount YES
Control Position LEFT		Are there currently treatments in the window NO
Control Length OVERRIDE DEFAULT		

Line 16

Product: ROLLER SHADE - CCL
Model: SOLAR SCREENS
Color: Merida 1% - Granite (120")
Quantity: 1

Total: \$1,045.41

Room Type OFFICE BUILDING	Control Length Override 110	Special Order NO
Window # 15-B	CCL Chain Type BEADED - Metal - Silver - METAL	Installer / Client Notes
Side by Side Windows NO	Tension Pulley Color COLOR - Black - BLACK	Installing into Steel or Concrete YES
Mount Type INSIDE	Components Color COMPONENT COLOR - Black - BLACK	Top of Window over 10' from Floor YES
Cassette / Valance Type NONE	Bottom Rail Finish FABRIC WRAPPED	Enter Height (in Feet) from Floor to Top 12
Link System NO	Decorative Hem NO	Is Window in a Stairway NO
Operating Style STANDARD LIFT		Is this a Ceiling Mount YES
Control Position RIGHT		Are there currently treatments in the window NO
Control Length OVERRIDE DEFAULT		

Line 17

Product: ROLLER SHADE - CCL
Model: SOLAR SCREENS
Color: Merida 1% - Granite (120")

Quantity: 1

Total: \$1,045.41

Room Type OFFICE BUILDING
Window # 14-A
Side by Side Windows NO
Mount Type INSIDE
Cassette / Valance Type NONE
Link System NO
Operating Style STANDARD LIFT
Control Position LEFT
Control Length OVERRIDE DEFAULT

Control Length Override 110
CCL Chain Type BEADED - Metal - Silver - METAL
Tension Pulley Color COLOR - Black - BLACK
Components Color COMPONENT COLOR - Black - BLACK
Bottom Rail Finish FABRIC WRAPPED
Decorative Hem NO

Special Order NO
Installer / Client Notes
Installing into Steel or Concrete YES
Top of Window over 10' from Floor YES
Enter Height (in Feet) from Floor to Top 12
Is Window in a Stairway NO
Is this a Ceiling Mount YES
Are there currently treatments in the window NO

Line 18

Product: ROLLER SHADE - CCL
Model: SOLAR SCREENS
Color: Merida 1% - Granite (120")
Quantity: 1

Total: \$1,045.41

Room Type OFFICE BUILDING
Window # 14-B
Side by Side Windows NO
Mount Type INSIDE
Cassette / Valance Type NONE
Link System NO
Operating Style STANDARD LIFT
Control Position RIGHT
Control Length OVERRIDE DEFAULT

Control Length Override 110
CCL Chain Type BEADED - Metal - Silver - METAL
Tension Pulley Color COLOR - Black - BLACK
Components Color COMPONENT COLOR - Black - BLACK
Bottom Rail Finish FABRIC WRAPPED
Decorative Hem NO

Special Order NO
Installer / Client Notes
Installing into Steel or Concrete YES
Top of Window over 10' from Floor YES
Enter Height (in Feet) from Floor to Top 12
Is Window in a Stairway NO
Is this a Ceiling Mount YES
Are there currently treatments in the window NO

Line 19

Product: ROLLER SHADE - CCL
Model: SOLAR SCREENS
Color: Merida 1% - Granite (120")
Quantity: 1

Total: \$1,045.41

Room Type OFFICE BUILDING
Window # 12-A
Side by Side Windows NO
Mount Type INSIDE
Cassette / Valance Type NONE
Link System NO
Operating Style STANDARD LIFT
Control Position LEFT
Control Length OVERRIDE DEFAULT

Control Length Override 110
CCL Chain Type BEADED - Metal - Silver - METAL
Tension Pulley Color COLOR - Black - BLACK
Components Color COMPONENT COLOR - Black - BLACK
Bottom Rail Finish FABRIC WRAPPED
Decorative Hem NO

Special Order NO
Installer / Client Notes
Installing into Steel or Concrete YES
Top of Window over 10' from Floor YES
Enter Height (in Feet) from Floor to Top 12
Is Window in a Stairway NO
Is this a Ceiling Mount YES
Are there currently treatments in the window NO

Line 20

Product: ROLLER SHADE - CCL
Model: SOLAR SCREENS
Color: Merida 1% - Granite (120")
Quantity: 1

Total: \$1,045.41

Room Type OFFICE BUILDING
Window # 12-B
Side by Side Windows NO
Mount Type INSIDE
Cassette / Valance Type NONE

Link System NO
Operating Style STANDARD LIFT
Control Position RIGHT
Control Length OVERRIDE DEFAULT
Control Length Override 110

CCL Chain Type BEADED - Metal - Silver - METAL
Tension Pulley Color COLOR - Black - BLACK

Components Color COMPONENT COLOR -	Installer / Client Notes	Is this a Ceiling Mount YES
Black - BLACK	Installing into Steel or Concrete YES	Are there currently treatments in the
Bottom Rail Finish FABRIC WRAPPED	Top of Window over 10' from Floor YES	window NO
Decorative Hem NO	Enter Height (in Feet) from Floor to Top 12	
Special Order NO	Is Window in a Stairway NO	

Line 21

Product: ROLLER SHADE - CCL
Model: SOLAR SCREENS
Color: Merida 1% - Granite (120")
Quantity: 1 **Total:** \$1,045.41

Room Type OFFICE BUILDING	Control Length Override 110	Special Order NO
Window # 11-A	CCL Chain Type BEADED - Metal - Silver - METAL	Installer / Client Notes
Side by Side Windows NO	Tension Pulley Color COLOR - Black - BLACK	Installing into Steel or Concrete YES
Mount Type INSIDE	Components Color COMPONENT COLOR - Black - BLACK	Top of Window over 10' from Floor YES
Cassette / Valance Type NONE	Bottom Rail Finish FABRIC WRAPPED	Enter Height (in Feet) from Floor to Top 12
Link System NO	Decorative Hem NO	Is Window in a Stairway NO
Operating Style STANDARD LIFT		Is this a Ceiling Mount YES
Control Position LEFT		Are there currently treatments in the
Control Length OVERRIDE DEFAULT		window NO

Line 22

Product: ROLLER SHADE - CCL
Model: SOLAR SCREENS
Color: Merida 1% - Granite (120")
Quantity: 1 **Total:** \$1,045.36

Room Type OFFICE BUILDING	Control Length Override 110	Special Order NO
Window # 11-B	CCL Chain Type BEADED - Metal - Silver - METAL	Installer / Client Notes
Side by Side Windows NO	Tension Pulley Color COLOR - Black - BLACK	Installing into Steel or Concrete YES
Mount Type INSIDE	Components Color COMPONENT COLOR - Black - BLACK	Top of Window over 10' from Floor YES
Cassette / Valance Type NONE	Bottom Rail Finish FABRIC WRAPPED	Enter Height (in Feet) from Floor to Top 12
Link System NO	Decorative Hem NO	Is Window in a Stairway NO
Operating Style STANDARD LIFT		Is this a Ceiling Mount YES
Control Position RIGHT		Are there currently treatments in the
Control Length OVERRIDE DEFAULT		window NO

Order Summary:

Product Total	\$20,692.00
Packaging and Handling	\$2,309.88
Installation Charge	\$3,276.93
Sales Tax	\$2,127.50
Total Contract Price	\$28,406.31
Downpayment Received	\$0.00
Balance Due	\$28,406.31
Total Discounts Applied	\$6,880.00

