



Teach Las Vegas

TEACH Las Vegas Governing Board Meeting

Amended on October 7, 2021 at 3:56 PM PDT

Date and Time

Tuesday October 12, 2021 at 6:00 PM PDT

Location

Beth Bulgeron is inviting you to a scheduled Zoom meeting.

Topic: TEACH Las Vegas Regular Board Meeting

Time: Oct 12, 2021 06:00 PM Pacific Time (US and Canada)

Join Zoom Meeting

<https://teachpublicschools-org.zoom.us/j/89833746249?pwd=eE9QSFQzOE8yeE1qcmdlWVhnUzVldz09>

Meeting ID: 898 3374 6249

Passcode: 024696

One tap mobile

+16699006833,,89833746249#,,,,*024696# US (San Jose)

+13462487799,,89833746249#,,,,*024696# US (Houston)

Dial by your location

+1 669 900 6833 US (San Jose)

+1 346 248 7799 US (Houston)

+1 253 215 8782 US (Tacoma)

+1 301 715 8592 US (Washington DC)

+1 312 626 6799 US (Chicago)

+1 929 205 6099 US (New York)

Meeting ID: 898 3374 6249

Passcode: 024696

Find your local number: <https://teachpublicschools-org.zoom.us/u/kdsgQYC3IN>

This Board Meeting Agenda has been posted on the school's [Board on Track page](#), which is linked from the [TEACH Las Vegas webpage](#), and the official website of the

state, <https://notice.nv.gov>. The agenda is also posted in the school's main office at 4660 N Rancho Drive, Las Vegas, NV 89130.

Agenda

	Purpose	Presenter	Time
I. Opening Items			6:00 PM
A. Call the Meeting to Order		Trishawn Allison	
B. Record Attendance		Beth Bulgeron	1 m
C. Public Comment		Trishawn Allison	10 m
<p><i>Public Comment will be taken during this agenda item regarding any item appearing on the agenda. No action may be taken on a matter discussed under this item until the matter is included on an agenda as an item on which action may be taken. See NRS 241.020. A time limit of three (3) minutes, subject to the discretion of the Chair, will be imposed on public comments. The TEACH LV Chair may allow additional public comment at her discretion. Public Comment #2 will provide an opportunity for public comment on any matter not on the agenda.</i></p>			
II. CONSENT ITEMS			6:11 PM
<p>Consent Items- Items under Consent Items will be voted on in one motion, unless a member of the Board request that an item be removed and voted on separately, in which case the Board Chair will determine when it will be balled and considered for action. Due to the set-up of Board On Track, approval of any board meeting minutes will be done throughout consent and listed as items B-Z (as needed) under Consent Items.</p>			
A. Approval of Board Agenda and Minutes of the September 14, 2021 Board Meeting	Vote	Trishawn Allison	3 m
III. ITEMS SCHEDULED FOR INFORMATION & POTENTIAL ACTION			6:14 PM
A. TEACH Las Vegas Fiscal Report	FYI	Theresa Thompson	5 m
B. Update on Covid-19 Related Policies and Procedures	Discuss	Beth Bulgeron	5 m
<p>Beth Bulgeron will present on behalf of Andrea Moore the school's Covid-related practices.</p>			
C. Executive Director's Report	Discuss	Andrea Moore via Beth Bulgeron	5 m
<p>The Executive Director's Report will include an update on student academic performance, status of Explore Academy's building and move-out date, updated enrollment, FRL count and distance learning.</p>			
D. Update: New Board Member Recruitment	Discuss	Beth Bulgeron	7 m
E. Update on Explore and Enrollment	FYI	Beth Bulgeron	5 m
IV. Closing Items			6:41 PM

	Purpose	Presenter	Time
A. Upcoming Meeting Date	FYI		5 m
The next regular Board Meeting is scheduled for November 9, 2021 at 6 pm.			
B. Public Comment			5 m
C. Board Member Comments			5 m
D. Adjourn Meeting	Vote		

Coversheet

Approval of Board Agenda and Minutes of the September 14, 2021 Board Meeting

Section: II. CONSENT ITEMS
Item: A. Approval of Board Agenda and Minutes of the September 14, 2021
Board Meeting
Purpose: Vote
Submitted by:
Related Material: 2021_09_14_board_meeting_minutes.pdf

DRAFT



Teach Las Vegas

Minutes

TEACH Las Vegas Governing Board Meeting

Date and Time

Tuesday September 14, 2021 at 6:00 PM

Location

Beth Bulgeron is inviting you to a scheduled Zoom meeting.

Topic: TEACH Las Vegas Regular Board Meeting

Time: Sep 14, 2021 06:00 PM Pacific Time (US and Canada)

Join Zoom Meeting

[https://teachpublicschools-org.zoom.us/j/84711588503?](https://teachpublicschools-org.zoom.us/j/84711588503?pwd=RmFUUDVOcWxYVHRvUlllOEIzVFdndz09)

[pwd=RmFUUDVOcWxYVHRvUlllOEIzVFdndz09](https://teachpublicschools-org.zoom.us/j/84711588503?pwd=RmFUUDVOcWxYVHRvUlllOEIzVFdndz09)

Meeting ID: 847 1158 8503

Passcode: 051179

One tap mobile

+16699006833,,84711588503#,,,,*051179# US (San Jose)

+13462487799,,84711588503#,,,,*051179# US (Houston)

Dial by your location

+1 669 900 6833 US (San Jose)

+1 346 248 7799 US (Houston)

+1 253 215 8782 US (Tacoma)

+1 312 626 6799 US (Chicago)

+1 929 205 6099 US (New York)

+1 301 715 8592 US (Washington DC)

Meeting ID: 847 1158 8503

Passcode: 051179

Find your local number: <https://teachpublicschools-org.zoom.us/u/kRIHjkiZ6>

This Board Meeting Agenda has been posted on the school's [Board on Track page](#), which is linked from the [TEACH Las Vegas webpage](#), and the official website of the state, <https://notice.nv.gov>. The agenda is also posted in the school's main office at 4660 N Rancho Drive, Las Vegas, NV 89130.

Directors Present

C. Igeleke (remote), D. Horn (remote), N. Sarisahin (remote)

Directors Absent

J. Sinclair, T. Allison

Ex Officio Members Present

A. Moore (remote)

Non Voting Members Present

A. Moore (remote)

Guests Present

B. Bulgeron (remote), E. Robles (remote), M. Pimienta (remote), R. Carranza (remote),
S. Lawson (remote)

I. Opening Items

A. Call the Meeting to Order

D. Horn called a meeting of the board of directors of Teach Las Vegas to order on Tuesday Sep 14, 2021 at 6:04 PM.

B. Record Attendance

C. Public Comment

No Public Comment

II. CONSENT ITEMS

A. Approval of Board Agenda and Minutes of the August 10, 2021 Board Meeting

N. Sarisahin made a motion to Approve the Board Agenda and Approve the Minutes from the previous meeting.

C. Igeleke seconded the motion.

The board **VOTED** to approve the motion.

Roll Call

D. Horn Aye

N. Sarisahin Aye

J. Sinclair Absent

T. Allison Absent

C. Igeleke Aye

III. ITEMS SCHEDULED FOR INFORMATION & POTENTIAL ACTION

A. TEACH Las Vegas Fiscal Report

Theresa Thompson provided a fiscal report that included information a reduced enrollment budget financial report that included highlights, a board budget overview, details on revenue, expenses and fund balance, budget v. actuals, and

statement of financial position. The board asked questions about staffing and enrollment caps for the year.

B. Code of Ethics Policy

D. Horn made a motion to Approve the Ethics Policy.

N. Sarisahin seconded the motion.

Beth Bulgeron presented the Ethics Policy. The Board discussed whether or not this agenda item should have been in the consent agenda and whether it should be carried over until the next board meeting to provide more time, there was disagreement among board members about whether or not that was necessary. The board **VOTED** to approve the motion.

Roll Call

D. Horn Aye
 C. Igeleke No
 N. Sarisahin Aye
 J. Sinclair Absent
 T. Allison Absent

C. Board Policies Procedures

C. Igeleke made a motion to Approve the Board Policies Procedure with the amendment that it include the ability for any interested person to address the need or revision of a policy at any Board member during the public comment section of the agenda.

D. Horn seconded the motion.

The Board asked questions of clarification and specifically about when board members could raise the need for a new policy. The board **VOTED** to approve the motion.

Roll Call

C. Igeleke Aye
 T. Allison Absent
 N. Sarisahin Aye
 D. Horn Aye
 J. Sinclair Absent

D. Update: New Board Member Recruitment

Dr. Pimienta gave the Board an update on recruitment efforts and that there was no interested individuals at this time. She urged Board members to use their contacts to recruit new members. Board member Crislove Igeleke stated she would reach out to Bar Association groups. Board discussion also included the suggestions that staff contact the Charter School Association of Nevada, and using the school's facebook and social media outlets.

E. Executive Director's Report

Andrea Moore provided the Executive Director's report that included a student enrollment update, upcoming People Enrollment and Attendance Audit, status of ordered curriculum and diagnostic testing. The Board discussion included suggestions and the request for projected future enrollment (for future years) from Theresa and monthly updates on academic performance from Ms. Moore. The question about the cost/benefit of adding new students in the middle of the school year was also raised.

F. Health Insurance Benefits Package for Teach Las Vegas Employees

N. Sarisahin made a motion to Accept the proposal for health insurance benefits from Distinctive.

D. Horn seconded the motion.

Andrea Moore presented on the quotes for health insurance and went into detail on the bid presented by Distinctive by providing information about the company, the relationship with the school and described how the rates were more competitive than the other bids. The board **VOTED** to approve the motion.

Roll Call

D. Horn Aye
T. Allison Absent
C. Igeleke Aye
N. Sarisahin Aye
J. Sinclair Absent

IV. Closing Items

A. Upcoming Meeting Date

The next Regular Board Meeting is scheduled for October 12 at 6 pm.

B. Public Comment

No public comment.

C. Board Member Comments

Board members made the following comments:

- Staff should update the board on Explore's construction of their new site and actual move-out date;
- Board would like to be updated on Covid policies and compliance with state Covid-19 protocol;
- Information about board training should be sent out or scheduled.

D. Adjourn Meeting

There being no further business to be transacted, and upon motion duly made, seconded and approved, the meeting was adjourned at 7:20 PM.

Respectfully Submitted,
D. Horn

Coversheet

TEACH Las Vegas Fiscal Report

Section: III. ITEMS SCHEDULED FOR INFORMATION & POTENTIAL ACTION
Item: A. TEACH Las Vegas Fiscal Report
Purpose: FYI
Submitted by:
Related Material:
TEACH_Las Vegas PPT Template for Monthly Board Presentations - September 2021.pdf



TEACH Las Vegas

Reduced Enrollment Budget Financial Presentation – September 2021

September Highlights

- Cash Balance @ 10.4.2021 \$84,950
- Revised Budget Revenue w/150 enrollment – Revenues @ \$2,632,222, Expense @ \$2,500,047 Surplus \$132,175- Forecasting Enrollment @ 125 with Revenues @ \$2,383,449, Expenses @2,593,415 projected deficit of \$7.9K
- Applications and Budgets submitted for Title Funds/SPED Funds
- Greater Schools for Nevada Charter School Program grant award of \$1.5M approved. Submitted \$137,536 for YTD reimbursements
- TEACH Las Vegas Nevada Revolving Loan revised amount of \$29,000 (\$500 per 48 enrollment) vs \$162,500 (\$500 per 325 enrollment) – Loan amount received July 7, 2021
- Opportunity 180 Loan amount \$100,000- this loan has potential to be forgiven as grant
- Approved Budget was due to Nevada Department of Education on 6/8/2021. Reported Revenues \$3,847,535, Expense \$3,247,293, surplus \$600,242

TEACH – Las Vegas Revenue

	Year-to-Date			Annual/Full Year		
	Actual @ 9/30/2021	Revised Budget @ 08/31/2021	Fav/(Unfav)	Forecast @ 9/30/2021 - 125	Revised Budget @6/30/2022- 150	Fav/(Unfav)
Revenue						
Distributed School Account	\$ 57,574	\$ 88,800	\$ (31,226)	\$ 925,375	\$ 1,110,450	\$ (185,075)
State Revenue	-	-	-	1,073,561	1,084,027	(10,466)
Federal Revenue	-	-	-	67,412	125,745	(58,333)
Other Local Revenue	262,142	156,000	106,142	317,101	312,000	5,101
Total Revenue	\$ 319,716	\$ 244,800	\$ 74,916	\$ 2,383,449	\$ 2,632,222	\$ (248,773)

- ❑ Distributed School Account (DSA) \$925K- (projected decrease of \$185K) is State Revenue which is currently calculated at \$7,403 per Pupil. These funds are generated from State Taxes. Decrease is due to forecasting enrollment @ 125 instead of revised budget of 150
- ❑ State Revenue \$1.07M- (projected decrease of \$10.4k) is State Funding consisting of \$52K of Special Education Funding at a rate of \$455 per Enrollment. The State Revenue includes \$1.021M of the Great Schools of Nevada Charter School Program Funding Grant that is projected to be spent during FY21/22. Decrease is due to forecasting enrollment @ 125 instead of revised budget of 150
- ❑ Federal Revenue \$67K- Mainly Consist of Title I Funding of \$38K @ \$332 per Free and Reduce Lunch Student which is projected at 44 or 92% of beginning student enrollment at start of school. Also, Federal Special Education Revenue of \$16.7K at a Rate of \$716 per Special Education Student. TLV is projecting @ 18% or 8.64 students will need Special Education Services. These amounts are subject to change based on final student count and any adjustments to be made for Title Funds.) Title IIA -\$8, 151, Title III- \$2,298, Title IVA -\$2,686 are also included
- ❑ Other Local Revenue \$317K and consist of 6 months rental payments from Explore plus property insurance

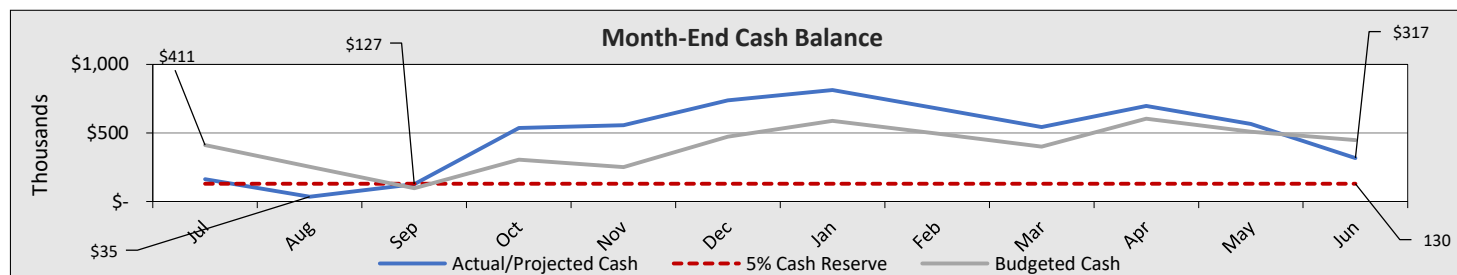
Teach High School - NV



FY22 Board Summary

Revised 10/7/2021

	Year-to-Date			Annual/Full Year		
	Actual @ 9/30/2021	Revised Budget @ 9/30/2021	Fav/(Unfav)	Forecast @ 9/30/2021 -125	Revised Budget @6/30/2022-150	Fav/(Unfav)
Revenue						
Distributed School Account	\$ 57,574	\$ 88,800	\$ (31,226)	\$ 925,375	\$ 1,110,450	\$ (185,075)
State Revenue	-	-	-	1,073,561	1,084,027	(10,466)
Federal Revenue	-	-	-	67,412	125,745	(58,333)
Other Local Revenue	262,142	156,000	106,142	317,101	312,000	5,101
Total Revenue	\$ 319,716	\$ 244,800	\$ 74,916	\$ 2,383,449	\$ 2,632,222	\$ (248,773)
Expenses						
Salaries	\$ 122,570	\$ 115,136	\$ (7,433)	\$ 617,738	\$ 563,500	\$ (54,238)
Employee Benefits	35,634	67,329	31,695	315,053	302,871	(12,182)
Prof. and Tech. Services	64,201	103,193	38,992	395,949	412,772	16,823
Property Services	204,388	169,269	(35,119)	712,194	677,075	(35,119)
Other Purchased Services	20,669	23,847	3,178	89,449	95,388	5,939
Supplies	117,724	339,412	221,688	447,269	433,510	(13,759)
Property	-	-	-	-	-	-
Debt Service and Misc.	3,407	263	(3,145)	4,195	1,050	(3,145)
General	-	3,470	3,470	11,567	13,881	2,313
Total Expenses	\$ 568,593	\$ 821,920	\$ 253,326	\$ 2,593,415	\$ 2,500,047	\$ (93,368)
Total Surplus(Deficit)	\$ (248,877)	\$ (577,120)	\$ 328,242	\$ (209,966)	\$ 132,175	\$ 342,141
<i>Adjustment for GASB:</i>						
Add Back Deferred Rent	<u>114,192</u>	<u>114,192</u>		<u>202,007</u>	<u>202,007</u>	
Adjusted Surplus(Deficit)	(134,685)	(462,928)		(7,959)	334,182	
Beginning Fund Balance	31,096	31,096		31,096	31,096	
Ending Fund Balance	\$ (103,589)	\$ (431,832)		\$ 23,137	\$ 365,278	
<i>As a % of Annual Expenses</i>	<i>-4.0%</i>	<i>-17.3%</i>		<i>0.9%</i>	<i>14.6%</i>	



TEACH Las Vegas – Expenses & Fund Balance



	Year-to-Date			Annual/Full Year		
	Actual @ 9/30/2021	Revised Budget @ 9/30/2021	Fav/(Unfav)	Forecast @ 9/30/2021 - 125	Revised Budget @6/30/2022- 150	Fav/(Unfav)
Revenue						
Expenses						
Salaries	\$ 122,570	\$ 115,136	\$ (7,433)	\$ 617,738	\$ 563,500	\$ (54,238)
Employee Benefits	35,634	67,329	31,695	315,053	302,871	(12,182)
Prof. and Tech. Services	64,201	103,193	38,992	395,949	412,772	16,823
Property Services	204,388	169,269	(35,119)	712,194	677,075	(35,119)
Other Purchased Services	20,669	23,847	3,178	89,449	95,388	5,939
Supplies	117,724	339,412	221,688	447,269	433,510	(13,759)
Property	-	-	-	-	-	-
Debt Service and Misc.	3,407	263	(3,145)	4,195	1,050	(3,145)
General	-	3,470	3,470	11,567	13,881	2,313
Total Expenses	\$ 568,593	\$ 821,920	\$ 253,326	\$ 2,593,415	\$ 2,500,047	\$ (93,368)
Total Surplus(Deficit)	\$ (248,877)	\$ (577,120)	\$ 328,242	\$ (209,966)	\$ 132,175	\$ 342,141
<i>Adjustment for GASB:</i>						
Add Back Deferred Rent	114,192	114,192		202,007	202,007	
Adjusted Surplus(Deficit)	(134,685)	(462,928)		(7,959)	334,182	
Beginning Fund Balance	31,096	31,096		31,096	31,096	
Ending Fund Balance	\$ (103,589)	\$ (431,832)		\$ 23,137	\$ 365,278	
<i>As a % of Annual Expenses</i>	<i>-4.0%</i>	<i>-17.3%</i>		<i>0.9%</i>	<i>14.6%</i>	

Note: Explanations on next slide

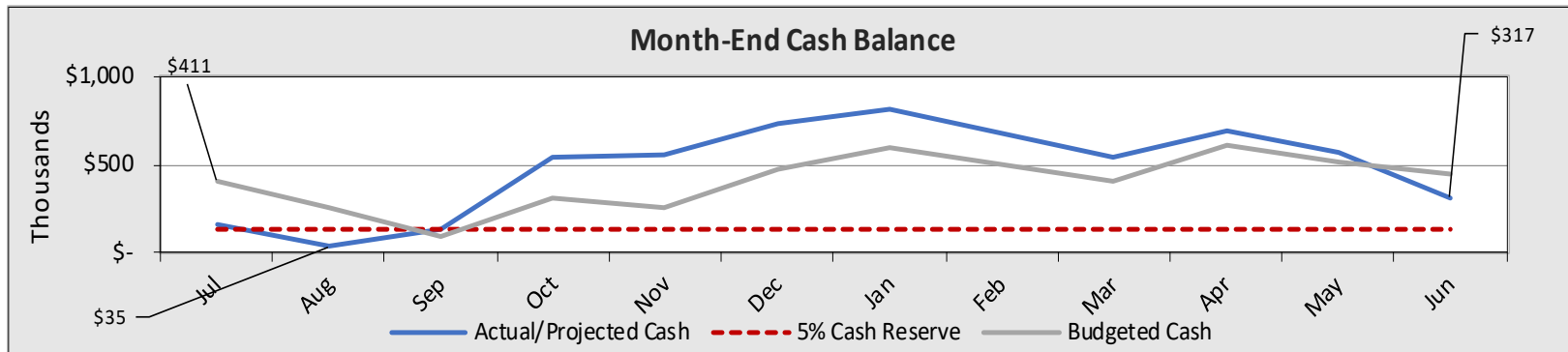
TEACH- Las Vegas Expense

- **Salaries: \$617.7K**-Consist of 7 Certificated Teachers- (6 on staff and one open position still on forecast)-- Certificated SPED Teacher, one Certificated EL Coordinator, one ED, and one Office Manager – **The projected increase of \$54.2K** is mainly due to First Aid and Safety Assistant and IT Support Tech not originally on revised budget.
- **Benefits: \$315K**- Mainly consist of Retirement PERS 29.25% @ \$158K and Health Benefits @\$127K
- **Professional Technical Services: \$395K**- Office and Administrative Fees \$119K Fees that are paid to EMO based on 5% of Total Revenue. Professional and Educational Services consist of \$144K of projected education Special Education services the entire amount included for reimbursement in CSP Budget. (based on 200 students- will update per trend in expense)
- **Purchased Property Services: \$693K**- Mainly consist of building lease amount of \$614K plus utilities and cleaning. (\$202K of lease amount is abated and deferred)
- **Supplies: \$447K**- Mainly consist of Technology Supplies and Equipment of \$308K which includes Chromebooks, Faculty Laptops, Wireless Point Installation Cost, - all cost included for reimbursement in CSP Budget

TEACH Las Vegas – Cash



- ❑ Projected Cash Balance at year-end is \$317K
- ❑ Includes \$400K Project Funds from Red Hook- may or may not draw down
- ❑ Repayment 180 Loan is excluded from cash flow- this year- with anticipation that this loan will be forgiven as grant



Questions & Discussion

Appendix follows, including:

- Monthly Cash Flow / Forecast 21/22
- Budget vs. Actual
- Statement of Financial Position
- AP Aging
- Monthly Check Register

Teach High School - NV

Monthly Cash Flow/Budget FY22

Revised 10/7/2021



	Jul-21	Aug-21	Sep-21	Oct-21	Nov-21	Dec-21	Jan-22	Feb-22	Mar-22	Apr-22	May-22	Jun-22	Year-End Accruals	Annual Forecast	Revised Budget	Favorable / (Unfav.)
Revenues																
<u>State- Revenue-Distributed School Account</u>																
3110-1110 Ad Valorem Taxes	\$ -	\$ -	\$ -	\$ 18,997	\$ 18,997	\$ 251,598	\$ 49,471	\$ 49,471	\$ 49,471	\$ 49,471	\$ 49,471	\$ 49,471	\$ 7,472	\$ 593,890	\$ 712,668	\$ (118,778)
3110-1120 Sales and Use Taxes	-	-	-	9,258	9,258	122,613	24,109	24,109	24,109	24,109	24,109	24,109	3,642	289,426	347,311	(57,885)
3110-1191 Franchise Fees	-	-	-	1	1	17	3	3	3	3	3	3	0	40	48	(8)
3110-1192 Basic General Governmental S	-	28,787	28,787	1,266	1,266	16,769	3,297	3,297	3,297	3,297	3,297	3,297	(57,076)	39,584	47,500	(7,917)
3110-1111 Basic Support	-	-	-	78	78	1,032	203	203	203	203	203	203	30	2,435	2,922	(487)
	-	28,787	28,787	29,600	29,600	392,030	77,084	77,084	77,084	77,084	77,084	77,084	(45,932)	925,375	1,110,450	(185,075)
<u>State Revenue</u>																
3115 Special Ed portion to DSA	-	-	-	5,460	-	-	5,460	-	-	28,438	-	-	12,968	52,325	62,790	(10,465)
3200 Restricted Grants-in-Aid	-	-	-	155,167	100,141	-	255,309	-	-	255,309	-	-	255,309	1,021,236	1,021,237	(1)
	-	-	-	160,627	100,141	-	260,769	-	-	283,747	-	-	268,277	1,073,561	1,084,027	(10,466)
<u>Federal Revenue</u>																
4500 Restricted Grants-in-Aid	-	-	-	-	-	-	-	-	-	-	-	14,653	-	-	-	-
4510 Title I	-	-	-	-	-	-	-	-	-	-	-	3,130	23,507	38,160	96,600	(58,440)
4520 Title IIA	-	-	-	-	-	-	-	-	-	-	-	5,021	5,021	8,151	525	7,626
4571 Special Education Part B	-	-	-	1,547	-	-	1,547	-	-	4,029	-	-	8,993	16,117	28,620	(12,503)
4703 E-Rate	-	-	-	-	-	-	-	-	-	-	2,686	2,298	-	4,984	-	4,984
	-	-	-	1,547	-	-	1,547	-	-	4,029	2,686	20,081	37,521	67,412	125,745	(58,333)
<u>Other Local Revenue</u>																
1790 Other Activity Income	58,000	52,000	152,142	(49,041)	52,000	52,000	-	-	-	-	-	-	-	317,101	312,000	5,101
	58,000	52,000	152,142	(49,041)	52,000	52,000	-	-	-	-	-	-	-	317,101	312,000	5,101
Total Revenue	58,000	80,787	180,929	142,734	181,741	444,030	339,400	77,084	77,084	364,860	79,770	97,165	259,866	2,383,449	2,632,222	(248,773)
Expenses																
<u>Personal Services-Salaries</u>																
0111 Regular Employees: Teachers	6,073	37,790	37,790	41,474	41,474	41,474	41,474	41,474	41,474	41,474	41,474	41,474	-	454,922	445,500	(9,422)
0114 Regular Employees: Licensed /	8,576	8,038	8,038	7,500	7,500	7,500	7,500	7,500	7,500	7,500	7,500	7,500	-	92,153	90,000	(2,153)
0117 Regular Employees: Other Clas	2,536	5,288	8,439	6,044	6,044	6,044	6,044	6,044	6,044	6,044	6,044	6,044	-	70,664	28,000	(42,664)
	17,186	51,116	54,267	55,019	55,019	55,019	55,019	55,019	55,019	55,019	55,019	55,019	-	617,738	563,500	(54,238)
<u>Personnel Services - Employee Benefits</u>																
0211 Group Insurance: Teacher	-	-	-	396	396	396	396	396	396	396	396	396	-	3,564	4,752	1,188
0214 Group Insurance: Licensed Admin.	-	-	-	108	108	108	108	108	108	108	108	108	-	972	1,296	324
0217 Group Insurance: Other Classified	-	-	-	36	36	36	36	36	36	36	36	36	-	324	432	108
0231 Retirement: Teachers	1,686	7,891	7,891	12,317	12,317	12,317	12,317	12,317	12,317	12,317	12,317	12,317	-	128,320	130,309	1,989
0234 Retirement: Licensed Admin.	2,231	2,231	2,231	454	454	454	454	454	454	454	454	454	-	10,781	5,580	(5,201)
0237 Retirement: Other Classified	363	896	1,655	1,815	1,815	1,815	1,815	1,815	1,815	1,815	1,815	1,815	-	19,247	8,190	(11,057)
0241 Medicare: Teachers	82	542	542	611	611	611	611	611	611	611	611	611	-	6,662	6,460	(202)
0244 Medicare: Licensed Admin.	109	109	109	106	106	106	106	106	106	106	106	106	-	1,282	1,305	23
0247 Medicare: Other Classified	34	73	117	90	90	90	90	90	90	90	90	90	-	1,033	406	(627)
0261 Unemployment: Teachers	-	1,122	1,122	768	768	768	768	768	768	768	768	768	-	9,155	8,424	(731)
0264 Unemployment: Licensed Adm	-	225	225	76	76	76	76	76	76	76	76	76	-	1,136	936	(200)
0267 Unemployment: Other Classifi	-	150	241	186	186	186	186	186	186	186	186	186	-	2,066	840	(1,226)
0271 Worker's Comp: Teachers	-	-	-	250	250	250	250	250	250	250	250	250	-	2,252	2,896	644
0274 Worker's Comp: Licensed Adm	-	-	-	49	49	49	49	49	49	49	49	49	-	439	585	146
0277 Worker's Comp: Other Classifi	-	-	-	39	39	39	39	39	39	39	39	39	-	354	182	(172)
0281 Health Benefits: Teachers	-	-	1,710	9,237	9,237	9,237	9,237	9,237	9,237	9,237	9,237	35,237	-	110,839	110,839	(0)
0284 Health Benefits: Licensed Adm	-	-	678	1,215	1,215	1,215	1,215	1,215	1,215	1,215	1,215	1,215	-	11,613	14,580	2,967
0287 Health Benefits: Other Classifi	-	-	1,371	405	405	405	405	405	405	405	405	405	-	5,016	4,860	(156)
	4,505	13,238	17,891	28,158	28,158	28,158	28,158	28,158	28,158	28,158	28,158	54,158	-	315,053	302,871	(12,182)
<u>Purchased Professional and Technical Services</u>																

Teach High School - NV

Monthly Cash Flow/Budget FY22

Revised 10/7/2021



	Jul-21	Aug-21	Sep-21	Oct-21	Nov-21	Dec-21	Jan-22	Feb-22	Mar-22	Apr-22	May-22	Jun-22	Year-End Accruals	Annual Forecast	Revised Budget	Favorable / (Unfav.)
0310 Official/Administrative Services	11	17,500	25,442	9,931	9,931	9,931	9,931	9,931	9,931	9,931	9,931	9,931	(13,159.88)	119,172	131,851	12,679
0320 Professional Educational Services	-	6,650	147	17,680	17,680	17,680	17,680	17,680	17,680	17,680	17,680	17,680	-	165,915	159,118	(6,797)
0337 Prof-Dev/Technology Training	-	-	-	1,667	1,667	1,667	1,667	1,667	1,667	1,667	1,667	1,667	-	15,000	15,000	-
0340 Other Professional Services	10,185	1,733	-	(10,028)	167	167	167	167	167	167	167	167	-	3,223	2,000	(1,223)
0345 Marketing	-	-	400	7,195	2,195	2,195	2,195	2,195	2,195	2,195	2,195	2,195	-	25,152	26,336	1,184
0350 Technical Services	-	-	365	12,394	2,199	2,199	2,199	2,199	2,199	2,199	2,199	2,199	-	30,353	26,390	(3,963)
0351 Data Processing and Coding Services	6,873	6,873	(11,977)	3,930	3,930	3,930	3,930	3,930	3,930	3,930	3,930	3,930	-	37,135	52,077	14,942
	17,069	32,756	14,376	42,768	37,768	37,768	37,768	37,768	37,768	37,768	37,768	37,768	(13,160)	395,949	412,772	16,823
Purchased Property Services																
0410 Utility Services	5,761	4,355	6,483	4,171	4,171	4,171	4,171	4,171	4,171	4,171	4,171	4,171	-	54,139	50,052	(4,087)
0420 Cleaning Services	-	1,845	5,910	1,750	1,750	1,750	1,750	1,750	1,750	1,750	1,750	1,750	-	23,505	21,000	(2,505)
0430 Repairs and Maintenance Services	-	7,487	7,853	-	-	-	-	-	-	-	-	-	-	15,340	-	(15,340)
0441 Renting Land and Buildings	54,898	54,898	54,898	50,502	50,502	50,502	50,502	50,502	50,502	50,502	50,502	50,502	-	619,211	606,023	(13,188)
	60,659	68,585	75,144	56,423	56,423	56,423	56,423	56,423	56,423	56,423	56,423	56,423	-	712,194	677,075	(35,119)
Other Purchased Services																
0519 Student Transportation	-	-	-	3,667	3,667	3,667	3,667	3,667	3,667	3,667	3,667	3,667	-	33,000	44,000	11,000
0521 Property Insurance "Business"	-	-	-	2,725	2,725	2,725	2,725	2,725	2,725	2,725	2,725	2,725	-	24,525	32,700	8,175
0522 Liability Insurance "Errors and Omissions"	-	4,781	505	-	-	-	-	-	-	-	-	-	-	5,287	-	(5,287)
0531 Postage	71	-	141	176	176	176	176	176	176	176	176	176	-	1,797	2,113	316
0534 Telephone - Cell phone services	-	-	1,511	1,250	1,250	1,250	1,250	1,250	1,250	1,250	1,250	3,489	-	15,000	15,000	0
0540 Advertising	5,000	-	-	(5,000)	-	-	-	-	-	-	-	-	-	-	-	-
0550 Printing and Binding	6,617	-	-	-	-	-	-	-	-	-	-	-	-	6,617	-	(6,617)
0580 Travel	385	977	680	131	131	131	131	131	131	131	131	131	-	3,223	1,575	(1,648)
	12,074	5,758	2,837	2,949	7,949	7,949	7,949	7,949	7,949	7,949	7,949	10,188	-	89,449	95,388	5,939
Supplies																
0610 General Supplies	2,004	10,705	3,521	3,842	3,842	3,842	3,842	3,842	3,842	3,842	3,842	3,842	-	50,810	46,106	(4,704)
0612 Technology Supplies and Equipment	6,592	3,951	2,691	17,489	17,489	17,489	17,489	17,489	17,489	17,489	17,489	123,147	-	276,296	308,046	31,751
0630 Food	-	-	6,749	-	-	-	-	-	-	-	-	-	-	6,749	-	(6,749)
0641 Textbooks	-	-	37,196	126	126	126	126	126	126	126	126	126	-	38,327	38,327	(0)
0651 Supplies -Tech -Software	-	4,511	8,023	3,148	3,148	3,148	3,148	3,148	3,148	3,148	3,148	3,148	-	40,870	37,781	(3,089)
0652 Supplies-Equipment	-	-	31,780	271	271	271	271	271	271	271	271	271	-	34,218	3,250	(30,968)
	8,597	19,167	89,960	24,876	24,876	24,876	24,876	24,876	24,876	24,876	24,876	130,534	-	447,269	433,510	(13,759)
Debt Service and Misc.																
0810 Dues and Fees	115	3,292	-	88	88	88	88	88	88	88	88	88	-	4,195	1,050	(3,145)
	115	3,292	-	88	88	88	88	88	88	88	88	88	-	4,195	1,050	(3,145)
General																
0591 Services Purchased From Another Agency	-	-	-	1,285	1,285	1,285	1,285	1,285	1,285	1,285	1,285	1,285	-	11,567	13,881	2,313
0790 Depreciation	-	-	-	-	-	-	-	-	-	-	-	-	-	-	-	-
	-	-	-	1,285	1,285	1,285	1,285	1,285	1,285	1,285	1,285	1,285	-	11,567	13,881	2,313
Total Expenses	120,205	193,912	254,476	211,565	211,565	211,565	211,565	211,565	211,565	211,565	211,565	345,462	(13,160)	2,593,415	2,500,047	(91,054)
Surplus (Deficit)	\$ (62,205)	\$ (113,125)	\$ (73,547)	\$ (68,831)	\$ (29,824)	\$ 232,465	\$ 127,835	\$ (134,481)	\$ (134,481)	\$ 153,295	\$ (131,795)	\$ (248,297)	\$ 273,026	\$ (209,966)	\$ 132,175	\$ (339,827)

Teach High School - NV

Monthly Cash Flow/Budget FY22

Revised 10/7/2021



	Jul-21	Aug-21	Sep-21	Oct-21	Nov-21	Dec-21	Jan-22	Feb-22	Mar-22	Apr-22	May-22	Jun-22	Year-End Accruals	Annual Forecast	Revised Budget	Favorable / (Unfav.)
Cash Flow Adjustments																
Monthly Surplus (Deficit)	(62,205)	(113,125)	(73,547)	(68,831)	(29,824)	232,465	127,835	(134,481)	(134,481)	153,295	(131,795)	(248,297)	273,026	(209,966)		
Cash flows from operating activities																
Public Funding Receivables	-	-	-	-	-	-	-	-	-	-	-	-	(259,866)	(259,866)		
Grants and Contributions Rec.	-	(52,000)	53,527	52,000	-	-	-	-	-	-	-	-	-	53,527		
Prepaid Expenses	(1,742)	5,301	2,537	-	-	-	-	-	-	-	-	-	-	6,096		
Accounts Payable	(24,385)	23,862	47,215	-	-	-	-	-	-	-	-	-	(13,160)	33,532		
Accrued Expenses	6,319	16,404	17,363	-	-	-	-	-	-	-	-	-	-	40,087		
Other Liabilities	137,183	27,550	45,443	50,502	50,502	(52,000)	(52,000)	-	-	-	-	-	-	207,180		
Cash flows from investing activities																
Purchases of Prop. And Equip.		(34,824)	-	(25,000)	-	-	-	-	-	-	-	-	-	(59,824)		
Cash flows from financing activities																
Proceeds from Debt	29,000	-	-	400,000	-	-	-	-	-	-	-	-	-	429,000		
	84,171	(126,832)	92,539	408,671	20,678	180,465	75,835	(134,481)	(134,481)	153,295	(131,795)	(248,297)				
	77,569	161,740	34,908	127,447	536,118	556,796	737,261	813,096	678,615	544,134	697,428	565,633				
	\$ 161,740	\$ 34,908	\$ 127,447	\$ 536,118	\$ 556,796	\$ 737,261	\$ 813,096	\$ 678,615	\$ 544,134	\$ 697,428	\$ 565,633	\$ 317,336				
	129,671	129,671	129,671	129,671	129,671	129,671	129,671	129,671	129,671	129,671	129,671	129,671				

TEACH Las Vegas

Budget vs Actual

For the period ended September 30, 2021

	Current Period Actual	Current Period Budget	Current Period Variance	Current Year Actual	YTD Budget	YTD Budget Variance	Total Budget
Revenues							
State Revenue Distributed School Account							
Basic General Governmental Services Tax	28,787	-	28,787	57,574	-	57,574	-
Basic Support	-	29,600	(29,600)	-	88,800	(88,800)	1,110,450
Total State Revenue Distributed School Account	28,787	29,600	(813)	57,574	88,800	(31,226)	1,110,450
State Revenue							
Special Ed portion to DSA	-	-	-	-	-	-	62,790
Restricted Grants-in-Aid	-	-	-	-	-	-	1,021,237
Total Federal Revenue	-	-	-	-	-	-	1,084,027
Federal Revenue							
Title I	-	-	-	-	-	-	96,600
Title IIA	-	-	-	-	-	-	525
Special Education Part B	-	-	-	-	-	-	28,620
Total Other State Revenue	-	-	-	-	-	-	125,745
Other Local Revenue							
Other Activity Income	152,142	52,000	100,142	262,142	156,000	106,142	312,000
Total Other Local Revenue	152,142	52,000	100,142	262,142	156,000	106,142	312,000
Total Revenues	180,929	81,600	99,329	319,716	244,800	74,916	2,632,222
Expenses							
Certificated Salaries							
Salaries of Regular Employees Paid to Teachers	37,790	39,985	2,195	81,653	85,636	3,983	445,500
Salaries of Regular Employees Paid to Licensed Administrators	8,038	7,500	(538)	24,653	22,500	(2,153)	90,000
Total Certificated Salaries	45,828	47,485	1,657	106,306	108,136	1,831	535,500
Classified Salaries							
Salaries of Regular Employees Paid to Other Classified / Support Staff	8,439	2,333	(6,106)	16,264	7,000	(9,264)	28,000
Total Classified Salaries	8,439	2,333	(6,106)	16,264	7,000	(9,264)	28,000
Benefits							
Group Insurance: Teacher	-	396	396	-	1,188	1,188	4,752
Group Insurance: Licensed Admin.	-	108	108	-	324	324	1,296
Group Insurance: Other Classified	-	36	36	-	108	108	432
Retirement Contributions for Teachers	7,891	11,696	3,805	17,468	25,049	7,581	130,309
Retirement Contributions for Licensed Administration	2,231	465	(1,766)	6,694	1,395	(5,299)	5,580
Retirement Contributions for Other Classified / Support Staff	1,655	683	(972)	2,914	2,048	(866)	8,190
Medicare Payments for Teachers	542	580	38	1,166	1,242	75	6,460
Medicare Payments for Licensed Administration	109	109	(0)	326	326	(0)	1,305
Medicare Payments for Other Classified / Support Staff	117	34	(83)	223	101	(122)	406
Unemployment Compensation for Teachers	1,122	756	(365)	2,243	1,619	(624)	8,424
Unemployment Compensation for Licensed Administration	225	78	(147)	450	234	(216)	936
Unemployment Compensation for Other Classified / Support Staff	241	70	(171)	391	210	(181)	840
Worker's Comp: Teachers	-	241	241	-	724	724	2,896
Worker's Comp: Licensed Admin.	-	49	49	-	146	146	585
Worker's Comp: Other Classified	-	15	15	-	46	46	182
Health Benefits: Teachers	1,710	9,237	7,527	1,710	27,710	26,000	110,839
Health Benefits: Licensed Admin.	678	1,215	537	678	3,645	2,967	14,580
Health Benefits: Other Classified	1,371	405	(966)	1,371	1,215	(156)	4,860
Total Benefits	17,891	26,171	8,281	35,634	67,329	31,695	302,871

TEACH Las Vegas

Budget vs Actual

For the period ended September 30, 2021

	Current Period Actual	Current Period Budget	Current Period Variance	Current Year Actual	YTD Budget	YTD Budget Variance	Total Budget
Books & Supplies							
Textbooks	37,196	3,194	(34,002)	37,196	9,582	(27,614)	38,327
Supplies - Technology - Software	8,023	3,148	(4,875)	12,534	9,445	(3,089)	37,781
Supplies/Equipment - Information Technology Related	31,780	271	(31,510)	31,780	812	(30,968)	3,250
Travel	680	131	(548)	2,041	394	(1,648)	1,575
General Supplies	3,521	3,842	321	16,230	11,527	(4,704)	46,106
Supplies/Equipment - Non-information technology suppli	2,691	102,682	99,991	13,234	308,046	294,812	308,046
Food Services	6,749	-	(6,749)	6,749	-	(6,749)	-
Total Books & Supplies	90,640	113,269	22,628	119,766	339,806	220,040	435,085
Subagreement Services							
Professional Educational Services	147	13,260	13,113	6,797	39,780	32,983	159,118
Student Transportation	-	3,667	3,667	-	11,000	11,000	44,000
Total Subagreement Services	147	16,927	16,780	6,797	50,780	43,983	203,118
Operations & Housekeeping							
Dues and Fees	-	88	88	3,407	263	(3,145)	1,050
Property Insurance "Business Owners"	-	2,725	2,725	-	8,175	8,175	32,700
Insurance	505	-	(505)	5,287	-	(5,287)	-
Utility Services	6,483	4,171	(2,312)	16,600	12,513	(4,087)	50,052
Cleaning Services	5,910	1,750	(4,160)	7,755	5,250	(2,505)	21,000
General	-	1,157	1,157	-	3,470	3,470	13,881
Telephone - Cell phone services	1,511	1,250	(261)	1,511	3,750	2,239	15,000
Postage	141	176	35	213	528	316	2,113
Total Operations & Housekeeping	14,551	11,316	(3,235)	34,772	33,949	(824)	135,796
Facilities, Repairs & Other Leases							
Renting Land and Buildings	54,898	50,502	(4,396)	164,694	151,506	(13,188)	606,023
Repairs and Maintenance Services	7,853	-	(7,853)	15,340	-	(15,340)	-
Total Facilities, Repairs & Other Leases	62,751	50,502	(12,249)	180,033	151,506	(28,527)	606,023
Professional/Consulting Services							
Other Professional Services	-	167	167	11,918	500	(11,417)	2,000
Prof-Dev/Technology Training	-	1,250	1,250	-	3,750	3,750	15,000
Technical Services	365	2,199	1,834	365	6,598	6,233	26,390
Official/Administrative Services	25,442	10,988	(14,454)	25,483	32,963	7,480	131,851
Printing and Binding	-	-	-	6,617	-	(6,617)	-
Data Processing and Coding Services	(11,977)	4,340	16,317	19,239	13,019	(6,220)	52,077
Marketing	400	2,195	1,795	400	6,584	6,184	26,336
Advertising	-	-	-	5,000	-	(5,000)	-
Total Professional/Consulting Services	14,229	21,138	6,909	69,021	63,413	(5,608)	253,654
Total Expenses	254,476	289,141	34,665	568,593	821,920	253,326	2,500,047
Change in Net Assets	(73,547)	(207,541)	133,993	(248,877)	(577,119)	328,242	132,175
Net Assets, Beginning of Period	(144,234)			31,096			
Net Assets, End of Period	\$ (217,781)			\$ (217,781)			

TEACH Las Vegas**Statement of Financial Position**

September 30, 2021

	Current Balance	Beginning Year Balance	YTD Change	YTD % Change
Assets				
Current Assets				
Cash and Cash Equivalents	\$ 127,447	\$ 77,569	\$ 49,878	64%
Grants & Contributions Receivable	-	53,527	(53,527)	-100%
Other Accounts Receivable	52,000	-	52,000	0%
Prepaid Expenses	18,289	24,385	(6,096)	-25%
Total Current Assets	197,735	155,481	42,255	27%
Long-Term Assets				
Property & Equipment, Net	34,824	-	34,824	0%
Total Long Term Assets	34,824	-	34,824	0%
Total Assets	\$ 232,559	\$ 155,481	\$ 77,078	50%
Liabilities				
Current Liabilities				
Accounts Payable	\$ 63,062	\$ 24,385	\$ 38,677	159%
Accrued Expenses	40,087	-	40,087	0%
Other Current Liabilities	104,000	-	104,000	0%
Total Current Liabilities	207,149	24,385	182,764	749%
Long-Term Liabilities				
Notes Payable, Net of Current Portion	129,000	100,000	29,000	29%
Other Long-Term Liabilities	114,192	-	114,192	0%
Total Long-Term Liabilities	243,192	100,000	143,192	143%
Total Liabilities	450,340	124,385	325,955	262%
Total Net Assets	(217,781)	31,096	(248,877)	-800%
Total Liabilities and Net Assets	\$ 232,559	\$ 155,481	\$ 77,078	50%

TEACH Las Vegas

Accounts Payable Aging

September 30, 2021

Vendor Name	Invoice/Credit Number	Invoice Date	Date Due	Current	1 - 30 Days Past Due	31 - 60 Days Past Due	61 - 90 Days Past Due	Over 90 Days Past Due	Total
Matthew J. Moore	100	9/2/2021	9/2/2021	\$ -	\$ 2,500	\$ -	\$ -	\$ -	\$ 2,500
McGraw Hill LLC	118515588001	8/31/2021	9/30/2021	5,339	-	-	-	-	5,339
McGraw Hill LLC	118515588002	8/31/2021	9/30/2021	3,290	-	-	-	-	3,290
McGraw Hill LLC	118515588003	8/31/2021	9/30/2021	5,569	-	-	-	-	5,569
McGraw Hill LLC	118515588004	8/31/2021	9/30/2021	2,373	-	-	-	-	2,373
McGraw Hill LLC	118515588005	8/31/2021	9/30/2021	8,742	-	-	-	-	8,742
McGraw Hill LLC	118516605001	9/3/2021	10/3/2021	6,529	-	-	-	-	6,529
Allstate Electric LLC	20491	9/20/2021	10/5/2021	475	-	-	-	-	475
Fencing Specialists, Inc.	21321	6/11/2021	6/11/2021	-	-	-	-	17,462	17,462
TEACH Public Schools	AR-1007	9/17/2021	10/17/2021	8,016	-	-	-	-	8,016
Campus Club School Uniforms	CAMP091521	9/15/2021	10/5/2021	420	-	-	-	-	420
Play with a Purpose	IN87190	9/21/2021	10/21/2021	1,017	-	-	-	-	1,017
NV Energy	NVEN091821-3325	9/18/2021	10/6/2021	1,331	-	-	-	-	1,331
Total Outstanding Invoices				<u>\$ 43,100</u>	<u>\$ 2,500</u>	<u>\$ -</u>	<u>\$ -</u>	<u>\$ 17,462</u>	<u>\$ 63,062</u>

TEACH Las Vegas

Check Register

For the period ended September 30, 2021

Check Number	Vendor Name	Transaction Description	Check Date	Check Amount
10045	Brady Industries	Janitorial Supplies & Handheld Sprayer, ProTalk Business Radio	9/3/2021	\$ 4,295.63
10046	Campus Club School Uniforms	Uniforms	9/3/2021	1,929.00
10047	Charter Impact	Business Mgmt Svcs & Payroll Processing Fee - 09/21	9/3/2021	6,873.00
10048	COX Business	Communication Svcs - 07/15/21 - 09/14/21	9/3/2021	1,510.87
10049	EMCOR Services Mesa Energy	Maintenance & Repair Svcs	9/3/2021	2,386.11
10050	NV Energy	Utility Svcs - 07/15/21 - 08/16/21	9/3/2021	1,632.15
10051	NV Energy	Utility Svcs - 07/15/21 - 08/16/21	9/3/2021	1,221.30
10052	NV Energy	Utility Svcs - 07/15/21 - 08/16/21	9/3/2021	2,299.34
10053	Staples Technology Solutions	Google Chrome License, HP Chromebook - (100)	9/3/2021	30,828.30
10054	ZeduPlus	Enrichment Svcs - 09/08/21 - 10/07/21	9/3/2021	VOID
10055	Brilliant General Maintenance Inc.	Janitorial Svcs - 08/21	9/10/2021	4,772.45
10056	Diamond Green Services LLC	Maintenance Svcs	9/10/2021	2,400.00
10057	Edlio LLC	Subscription - 07/01/21 - 04/01/22	9/10/2021	739.43
10058	Selene Lozada	Recruiting Svcs - 08/21, 09/21	9/10/2021	400.00
10059	Teacher Innovations, Inc.	Planbook Subscription - 12Months	9/10/2021	121.50
10060	Wildflower Therapy Services, LLC	SpEd Svcs - 08/24/21 - 08/31/21	9/10/2021	146.67
10061	Charter Impact	FedEx Reimb - 08/21	9/16/2021	120.96
10062	ZeduPlus	Enrichment Svcs - 09/08/21 - 10/07/21	9/16/2021	4,900.00
10063	Health Plan of Nevada	Health Ins - 10/21	9/17/2021	3,758.86
10064	Better 4 You Meals, Inc.	Meals - 08/21	9/24/2021	6,749.00
10065	Brady Industries	Janitorial Supplies	9/24/2021	1,171.89
10066	EMCOR Services Mesa Energy	Maintenance & Repair Svcs	9/24/2021	4,287.61
10067	IXL Learning, Inc.	IXL License - 1Yr	9/24/2021	2,070.00
10068	Les Olson Company	Copier Lease - 07/26/21 - 08/25/21	9/24/2021	1,216.56
10069	McGraw Hill LLC	Textbook	9/24/2021	5,354.24
10070	Play with a Purpose	Seating Circles Carpets - (5)	9/24/2021	1,674.40
10071	Republic Services #620	Janitorial Svcs - 08/21	9/24/2021	1,137.61
10072	The IT Guy	IT Svcs	9/24/2021	365.00
10073	Jacky Leung	Reimb - 08/12/21 - 08/14/21	9/27/2021	679.61
10074	Matt Brown	Reimb - 09/01/21	9/27/2021	20.50
ACH	Bank of Nevada	Analysis Fee	9/21/2021	15.00
Total Disbursements Issued in September				<u>\$ 95,076.99</u>

Coversheet

Update on Covid-19 Related Policies and Procedures

Section: III. ITEMS SCHEDULED FOR INFORMATION & POTENTIAL ACTION
Item: B. Update on Covid-19 Related Policies and Procedures
Purpose: Discuss
Submitted by:
Related Material: MX-5141N_20210915_070133.pdf



**PATH FORWARD PROGRAM OF DISTANCE EDUCATION
2021-2022**

4660 N. Rancho Drive Las Vegas, NV 89130

In-Person Learning: Health and Safety

TEACH Las Vegas has purchased two temperature reading devices that each student, educator, and staff members must use before they enter the building in the morning. The device will track the daily temperature of every person on the campus daily for the 180 days of instruction. If any person attending the school has a temperature of 100.4 degrees, the device will alert the administration, nurse, or FASA and that person will be sent home until they are without a temperature for 24 hours without the use of medication.

TEACH Las Vegas has also purchased cleaning and sanitizing products that will be used daily, multiple times a day if needed, to ensure that the campus is kept clean and sanitary. All staff and students will receive trainings on how to ensure they are cleaning their classrooms, common areas, and personal items clean.

CDC Recommendations

Face Coverings: In accordance with CDC guidelines, TEACH Las Vegas will follow the most up-to-date guidance from the CDC.

- All staff are required to wear a mask indoors if they are not fully vaccinated.
- Mask wearing is optional for students in Pre-K through Grade 3.
- Masks are required for students in grades 4 and 5, and optional for students in grades 6 through 12 who have been fully vaccinated.
- No one is required to wear a mask outdoors.

Handwashing and respiratory etiquette: In accordance with CDC guidelines, TEACH Las Vegas will:

Provide ongoing health education units and lessons, teach children proper handwashing, and reinforce behaviors, and provide adequate supplies. Ensure that teachers and staff use proper handwashing and respiratory etiquette.

- Teach and reinforce handwashing with soap and water for at least 20 seconds and increase monitoring to ensure adherence among students, teachers, and staff. If handwashing is not possible, hand sanitizer containing at least 60% alcohol should be used.
- Encourage students and staff to cover coughs and sneezes with a tissue when not wearing a mask and immediately wash their hands after blowing their nose, coughing, or sneezing.
- Some students with disabilities might need assistance with handwashing and respiratory etiquette behaviors.
- Supplies: Support healthy hygiene behaviors by providing adequate supplies, including soap, a way to dry hands, tissues, face masks (as feasible), and no-touch/foot-pedal

trash cans. If soap and water are not readily available, schools can provide alcohol-based hand sanitizer that contains at least 60% alcohol (for staff and older children who can safely use hand sanitizer).

Cleaning and maintaining healthy facilities: In accordance with CDC guidelines, TEACH Las Vegas will:

Make changes to physical spaces to maintain a healthy environment and facilities, including improving ventilation. Routinely clean high-touch surfaces (such as doorknobs and light switches).

Ventilation: Improve ventilation to the extent possible to increase circulation of outdoor air, increase the delivery of clean air, and dilute potential contaminants. This can be achieved through several actions.

- Bring in as much outdoor air as possible.
- Ensure Heating, Ventilation, and Air Conditioning (HVAC) settings are maximizing ventilation.
- Filter and/or clean the air in the school by changing filters regularly
- Use exhaust fans in restrooms and kitchens.

Modified layouts: Adjust physical layouts in classrooms and other settings to maximize physical space, such as by turning desks to face in the same direction.

Cleaning: Regularly clean high touch surfaces and objects (for example, playground equipment, door handles, sink handles, toilets, drinking fountains) within the school and on school buses at

Communal spaces: Stagger use and clean regularly (for example, daily or as often as needed). Consider use of larger spaces such as cafeterias, libraries, gyms for academic instruction, to maximize physical distancing.

Food service: Avoid offering any self-serve food or drink options such as hot and cold food bars, salad or condiment bars, and drink stations.

Water systems: Take steps to ensure that all water systems and features (for example, sink faucets, decorative fountains) are safe to use after a prolonged facility shutdown.

Contact Tracing: In accordance with CDC Guidelines, TEACH Las Vegas will:

TEACH Las Vegas will collaborate with the health department, to the extent allowable by privacy laws and other applicable laws, to confidentially provide information about people diagnosed with or exposed to COVID-19. Students, teachers, and staff with positive test results should isolate, and close contacts should quarantine. TEACH will report positive cases to the health department as soon as they are informed. TEACH school officials will notify families of

close contacts as soon as possible after they are notified that someone in the school has tested positive (within the same school day).

Staying home when appropriate: TEACH will educate teachers, staff and families about when they and their children should stay home and when they can return to school. Students, teachers, and staff who have symptoms should stay home and be referred to their healthcare provider for testing and care. TEACH may need to consider flexible sick leave policies and practices that enable teachers and staff to stay home when they are sick, have been exposed, or are caring for someone who is sick. TEACH will recruit and train sufficient substitute educators to ensure that teachers can stay home when they are sick or have been exposed to someone who is confirmed or suspected of having COVID-19.

Isolation should be used to separate people diagnosed with COVID-19 from those who are not infected. Students, teachers, and staff who are in isolation should stay home and follow the direction of the local public health authority about when it is safe for them to be around others.

Case investigation and contact tracing: TEACH will work with the local health department to facilitate, to the extent allowable by applicable laws, systematic case investigation and contact tracing of infected students, teachers, and staff, and consistent isolation of cases and quarantine of close contacts. TEACH will prepare and provide information and records to aid in the identification of potential contacts and exposure sites, consistent with applicable laws, including those related to privacy and confidentiality. Collaboration between the health department and K-12 school administration to obtain contact information of other individuals in shared rooms, class schedules, shared meals, or extracurricular activities will expedite contact tracing. For schools to remain open, health departments should ensure they have enough contact tracers to complete case investigation and notify contacts within 48 hours of a positive test result. Prompt identification, quarantine, and monitoring of those contacts exposed to SARS-CoV-2 can effectively break the chain of transmission and prevent further spread of the virus.

- The definition of a close contact is someone who was within 6 feet of a person diagnosed with COVID-19 for a total of 15 minutes or more over a 24-hour period. The definition of a close contact applies regardless of whether either person was wearing a mask.
- For schools that use less than 6 feet between students in classrooms, the definition of close contacts should not change. Students sitting less than 6 feet next to another student or person diagnosed with COVID-19 for a total of 15 minutes or more should quarantine at home and be referred for testing.

Quarantine should be used for students, teachers, and staff who might have been exposed to COVID-19. Close contacts, identified through contact tracing, should quarantine unless they are fully vaccinated, or have tested positive in the last 3 months, and do not have any symptoms. Students, teachers, and staff who are in quarantine should stay home and follow the direction

of the local public health department about when it is safe for them to be around others. If a child with a disability is required to quarantine, TEACH is required to provide services consistent with federal disability laws.

Diagnostic and screening testing: In accordance with CDC guidelines, TEACH Las Vegas will,

At all levels of community transmission, TEACH should offer referrals to diagnostic testing to any student, teacher, or staff member who is exhibiting symptoms of COVID-19 at school. Diagnostic testing for SARS-CoV-2 is intended to identify occurrence of SARS-CoV-2 infection at the individual level and is performed when there is a reason to suspect that an individual may be infected, such as having symptoms or suspected recent exposure. Examples of diagnostic testing strategies include testing symptomatic teachers, students, and staff who develop symptoms in school, and testing asymptomatic individuals who were exposed to someone with a confirmed or suspected case of COVID-19. Additional considerations for diagnostic testing:

- TEACH will advise students, teachers, and staff to stay home if they are sick or if they have been exposed to SARS-CoV-2. TEACH can encourage these individuals to talk to their healthcare provider about getting a COVID-19 test.
- If a student, teacher, or staff member becomes sick at school or reports a new COVID-19 diagnosis, TEACH should follow the steps of the COVID-19 Diagnosis flowchart on what to do next. This includes notifying a student's parent or guardian and initiating testing strategies. Notifications must be accessible for all students, parents, or guardians, including those with disabilities or limited English proficiency (for example, through use of interpreters or translated materials).
- It is important that school-based healthcare professionals have access to, and training on the proper use of personal protective equipment (PPE).
- Not every school or school-based healthcare professional will have the staff, resources, or training to conduct testing. Public health officials should work with TEACH to help link students and their families, teachers, and staff to other opportunities for testing in their community. Testing could be offered by referral to community-based testing sites, through collaboration with local public health, or through a centralized test location offered by the school district.

The presence of any of the symptoms below generally suggests a student, teacher, or staff member has an infectious illness and should not attend school, regardless of whether the illness is COVID-19. For students, staff, and teachers with chronic conditions, symptom presence should represent a change from their typical health status to warrant exclusion from school. Occurrence of any of the symptoms below while a student, teacher, or staff member is at school suggests the person may be referred for diagnostic testing.

- Temperature external icon of 100.4 degrees Fahrenheit or higher
- Sore throat

- Cough (for students with chronic cough due to allergies or asthma, a change in their cough from baseline)
- Difficulty breathing (for students with asthma, a change from their baseline breathing)
- Diarrhea or vomiting
- New loss of taste or smell
- New onset of severe headache, especially with a fever

Students should not attend school in-person if they or their caregiver identifies new development of any of the symptoms above. Teach can provide options to separate students with COVID-19 symptoms or suspected or confirmed COVID-19 diagnoses by, for example, placing students in isolation room/areas until transportation can be arranged to send them home or seek emergency medical attention.

If a COVID-19 diagnosis is confirmed, TEACH will support public health officials in determining which close contacts and other potentially exposed persons in the school setting could be tested and either isolated or quarantined. TEACH can assist by providing information, where appropriate, to identify close contacts (for example, class rosters, seating charts, and information to facilitate outreach to contacts).

Increase awareness to vaccinations: In accordance with CDC guidelines, TEACH Las Vegas will make CDC resources available to teachers and school staff by posting the below links in the employee handbook and teachers lounge/workroom.

- The [COVID-19 Vaccines for Teachers, School Staff, and Childcare Workers](#) web page provides school and childcare staff with the latest information about where and how to book an appointment.
- The [COVID-19 Vaccine Toolkit for School Settings and Childcare Programs](#) provides schools and childcare programs with ready-made materials they can use to communicate with staff about COVID-19 vaccination.

TEACH officials and health departments can work together to also support messaging and outreach about vaccination for members of school communities. TEACH communication platforms can facilitate outreach to encourage vaccination of household members of school-age children as they become eligible. This should include outreach in a language that limited English proficient family members of students can understand and in alternate formats as needed to facilitate effective communication for individuals with disabilities.

Implementation of layered prevention strategies will need to continue until we better understand potential transmission among people who received a COVID-19 vaccine and there is more vaccination coverage in the community. In addition, vaccines are not yet approved for use in children under 16 years old. For these reasons, even after teachers and staff are vaccinated, schools need to continue prevention measures for the foreseeable future, including requiring masks in schools and physical distancing.

Appropriate accommodations for children with disabilities: In accordance with CDC guidelines, TEACH Las Vegas will ensure that students with an IEP (Individualized Educational Plan) or 504 Plan modifications and accommodations are being met and that their health and safety are not being compromised.

In-Person Learning: Student and Staff Well Being

TEACH will meet all students social, emotional, mental, and physical health needs by providing a safe and inclusive learning environment. TEACH staff will be trained in PBIS strategies and incorporate them in their classrooms daily. Staff will also communicate with parents weekly and will inquire about any issues that the student may be experiencing so we can address them at school if appropriate. TEACH will have a RN contracted and a FASA on site daily to support students.

TEACH will ensure all students social, emotional, mental, and physical health needs are being met by conducting social/emotional lessons in every classroom at least weekly. Staff will be trained to look for signs of depression, anxiety, and harm to self-behaviors. If any student exhibits these behaviors, staff will communicate with school administration, and they will take the correct steps needed to support the students.

TEACH will use the SAFEVOICE app to ensure that students have a technology-based resource that supports their social, emotional, mental, and physical health. School administrators will be the point of contact for SAFEVOICE and will immediately follow up with parents and students when a report is filed. All staff members will also receive Mandated Reporter training prior to school beginning. In year two of TEACH being in operation, we will staff a school counselor and social worker to support the social, emotional, mental, and physical health needs of our students.

TEACH will support our staff by providing a safe, nurturing, calm, and peaceful workplace. TEACH will also notify and post the rights of Nevada employees to ensure that if an issue arises, all staff knows where they can access information, resources, and support. TEACH administration will also meet with staff weekly to communicate with and ensure that staff knows where to access support or be that point of support.

In-Person Learning: Accelerating Student Learning

TEACH Las Vegas will address the impacts of COVID-19's impact on student learning by doing the following:

- TEACH is a one-to-one Chromebook school. All students will have access to daily, reliable technology.

- TEACH will use benchmark testing, such as DIBLES and MAP testing to guide instruction, create interventions, implement interventions, and ensure consistent student academic growth.
- TEACH will provide breakfast and lunch to every student daily at no cost. Ensuring all students receive a balanced daily diet will help to increase their focus and ability to learn.
- TEACH will use the data from the WIDA assessment to help guide the instruction for our ELL students.
- TEACH will provide a daily intervention block, 30 minutes daily, to meet the specific and individual academic needs of every student.
- TEACH will form an intensive RTI process to ensure all students are making adequate progress.

TEACH will re-evaluate and implement different learning and assessment strategies as needed by our students. We are using the most current curriculum for our core subject areas and will use our data to drive instruction.

Distance Education: Students unable to participate in-person

Students who fall under these two categories will be eligible for distance learning:

1. Students who have documentation from a medical professional related to a condition that would be compromised by attending school in-person,
2. Students who are quarantined on the advice of local public health officials.

Students enrolled at TEACH and fall into either or both categories will be able to participate daily in their classroom activities and instruction via their Chromebook and if needed, TEACH will employ or offer a stipend to a teacher to provide additional academic support during the time the student is unable to attend school in-person.

Distance Education: Emergency Closure

TEACH will ensure that all students are able to continue to learn through distance education in the event the school must close because of the COVID -19 pandemic, or another major emergency necessitates the closure of school by:

1. All students will be provided a Chromebook for distance learning.
2. Classes will continue at their normal start and ending times. Instruction will be virtual instead of in-person
3. Teachers will be required to hold weekly parent meetings via phone call, text message, email, or Zoom call. During these meetings, teachers will address academics and any behavioral concerns.

4. If students are absent, teacher will contact parent the day of the absence. If student is absent longer than 3 days, school administration will contact parent and require a meeting.
5. Students will be provided all access to the web-based editions of all curricula.
6. Teachers will still provide daily interventions to all students; the time may decrease from 30 to 20 minutes if needed.
7. Students and teachers will still receive their daily prep time. Specialist will conduct classes virtually.

TEACH will work cooperatively with parents and families to ensure that all students are academically successful, and that their social, emotional, mental, and physical needs are being met.

Distance Education: Supporting Students

TEACH will ensure that all students continue to receive auxiliary services by doing the following:

1. All students will have the ability to take their Chromebooks home.
2. All curricula will be supported by on-line access to assignments, interventions, tests, and notes.
3. TEACH and the Special Education team will make every effort to ensure that all IEP minutes, modifications, and accommodations are being met. If at any point during distance learning, the teacher, student, parent, or school administration believe the student is not receiving the adequate or appropriate support, a meeting will be held to develop a plan that addresses the deficiencies.
4. TEACH will have the same policy for our EL Learners. If they begin to fall behind or need extra support, TEACH will provide tutoring.
5. Food services will continue. Breakfast and lunch will be served daily. Parents will be required to pick up food from the school campus.

Reopening School and Changes in the Health Office

Parent or Guardian:

Due to the ongoing risk of Covid-19, we are taking extra safety precautions at our school to protect our students, families and staff. Please review these temporary changes and share them with your student. We want everyone to feel comfortable and have a positive, healthy experience as the school reopens.

Before sending your student to school:

Students with the following symptoms should stay home then notify the school immediately:

- Cough
- Shortness of breath or difficulty breathing
- Fever 100.4 F or higher
- Chills
- Muscle pain
- Fatigue
- Sore throat
- Nasal congestion
- New loss of taste or smell
- Abdominal pain
- Nausea/Vomiting/Diarrhea
- Your child had close contact to an individual who has been diagnosed with Covid-19 or has Covid-19 symptoms in the last 14 days

Please do not send your child to school if he/she displays any of these signs or symptoms. We understand symptoms can be related to other health issues. If your student is experiencing these symptoms from a condition that is not contagious, a letter from your child's physician is required that specifically states the medical condition and provides the exact symptoms related to the condition.

The classroom:

- To limit the student's exposure to others that are ill or experiencing symptoms, minor first aid can be performed in the classroom.
- An injury or symptom that cannot easily be addressed in the classroom will be referred to the school's health office for further assistance.

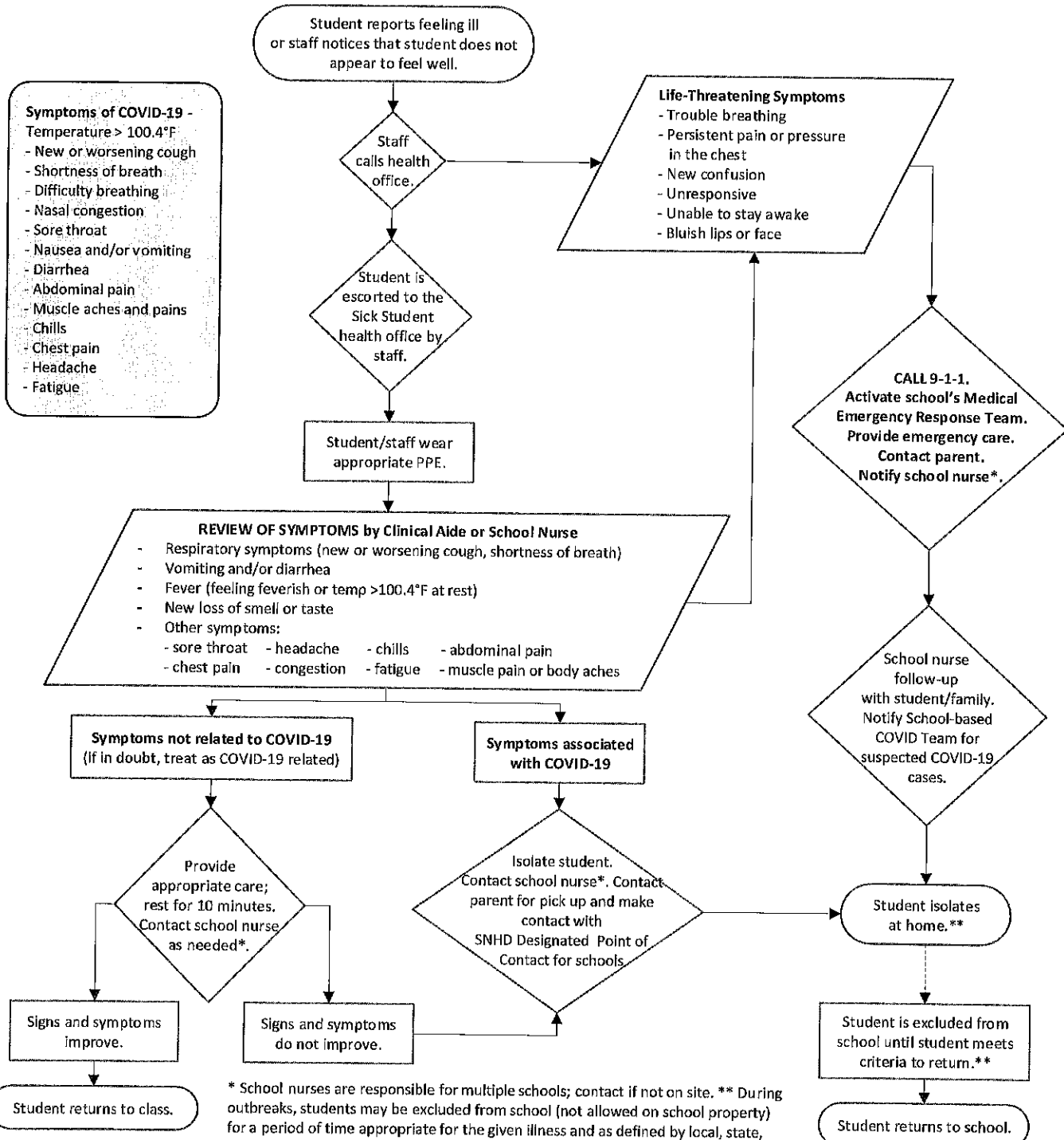
The health office:

- Our health office staff will be wearing masks and possibly other protective equipment for the safety of our staff and students.
- Depending on the nature of the student's health office visit and the symptoms they are experiencing, students will be placed in a mask if not already wearing a mask.
- There may be a separate supervised area for students with symptoms of a contagious illness which includes COVID-19.
- Any child experiencing COVID-19-like symptoms will need to be picked up immediately. Please make sure that your contact information is up to date with the registrar. You may want to include additional contacts who can be contacted to pick up your child.

Please notify the school's health office if someone in your household has been diagnosed with COVID-19 or has symptoms.

Thank you for your cooperation. If you have questions, please contact the school's Health Office.

School Reopening: Management of Students during COVID-19



* School nurses are responsible for multiple schools; contact if not on site. ** During outbreaks, students may be excluded from school (not allowed on school property) for a period of time appropriate for the given illness and as defined by local, state, and federal health districts.
Notify designated contacts within School-based COVID Team



Dear TEACH Families,

This notice is to inform you that an individual at our school tested positive for COVID-19.

TEACH Las Vegas is prohibited by federal law from revealing the identity of the individual; however, TEACH is working in collaboration with the Southern Nevada Health District (SNHD) to perform the necessary contact tracing. A close contact is someone within six feet for a collective 15 minutes. Mask mitigation practices may be used to determine specific quarantine dates and exposures. Any individual in close contact needs to quarantine for 10 days.

If the school or the SNHD has not directly contacted you, your child has not been identified as an individual with a close contact. All others may be considered a low-risk exposure, similar to an exposure in the community (e.g., shopping, gathering, events).

TEACH has taken precautions in accordance with re-opening plans to limit the risk to others. This includes cleaning and disinfecting the entire school as well as rules regarding social distancing and guidelines on the use of personal protective equipment.

Out of an abundance of caution and transparency, we are notifying all students and staff of the following:

- While low-risk exposure does not require a test, any family may seek community testing at the available sites throughout our community.
- It is important to be mindful to continue pre-screening for any symptoms and possible community contact.
- If any students are participating in outside activities, they are asked to be diligent in following current, best-practiced mitigation methods for the safety of our school and students. TEACH reminds everyone that if they have symptoms (i.e., new fever or chills, new or worsening cough, shortness of breath, new loss of taste or smell, new or worsening headache, new or worsening muscle or body aches, new nasal congestion/runny nose, excessive tiredness, excessive loss of appetite, abdominal pain, vomiting or diarrhea), to stay home.

Sincerely,

Mrs. Moore

TEACH School Health Services

COVID-19 Symptom(s) Medical Referral

Student Name: _____

Date of Birth: _____

ID#: _____

Date: _____

Dear Parent/Guardian:

In accordance with NRS 441A.040, NRS 441A.063, and NRS 441A.180, your child is suspected of having symptoms of a contagious or infectious disease that may be associated with COVID-19. Your child has been assessed by the school's Health Office and is experiencing the following:

- | | |
|--|---|
| <input type="checkbox"/> Fever (temperature of 100.0°F or higher) or Chills | <input type="checkbox"/> Fatigue |
| <input type="checkbox"/> Cough- that cannot be attributed to another health condition | <input type="checkbox"/> Muscle or body aches |
| <input type="checkbox"/> Difficulty Breathing/Shortness of breath- that cannot be attributed to another health condition | <input type="checkbox"/> Headache |
| <input type="checkbox"/> Diarrhea | <input type="checkbox"/> Sore throat |
| <input type="checkbox"/> Nausea or vomiting | <input type="checkbox"/> Congestion or runny nose |
| <input type="checkbox"/> New loss of taste or smell | |

If your child experiences any of these symptoms, seek emergency care immediately:

- | | |
|-------------------------------|---------------------------------|
| Trouble breathing | Inability to wake or stay awake |
| Bluish lips or face | New confusion |
| Pain or pressure in the chest | |

As part of symptom screening, your student may warrant further testing and/or medical follow up. Please contact your child's Licensed Health Care Provider for further direction. COVID testing is also recommended for those in close contact with person(s) that have COVID-19. **Take this referral with you to the appointment/evaluation.** For additional resources go to:
<https://www.southernnevadahealthdistrict.org/covid-19-testing-sites>

Furthermore, due to the symptom(s) reported, your child will be placed in a distance learning program and excluded from attending school in-person until your child has been:

1. Symptom-free for 24 hours without medication; **AND**
2. No one in the household is isolating for or sick with COVID-19 or COVID-19 like symptoms; **AND**
3. 10 days has passed since symptoms first started.

We will change your student over to distance learning today and your child's distance teacher will reach out to you or your child to explain how to access learning. The teacher will also have a method for your child to check in daily. During this time, if your child checks in daily, your child will not be marked absent. If your child is too sick to participate, please call the school to let us know. When your child feels better, please arrange with the teacher for make-up work. When your child meets the requirements to return to in-person learning, please let us know and we will move your child back to the current in-person program, if applicable.

Sincerely,

(insert Principal name), Principal (insert school name)

School Nurse

COV 59
8/20

Confidential

STUDENT CLEARANCE TO RETURN TO CLASS

Complete only after parent/guardian returns Parent Verification-Return to School After Exclusion form

Date _____

Name of Teacher (First period if Middle or High School) _____

Classroom _____

Student Name _____

The Student named above has been cleared by school health office personnel and may be admitted to class.

Health Aide, First Aide Safety Assistant (FASA) or School Nurse Signature