

Scope of Work for El Camino Charter High School Multimedia Center

PREPARED BY

Atif Myers

04-17-2024



Project Scope for the Media Center

Overview

Provider will work with Customer to:

- Install QTY (1) Samsung 219" display in the media center with QTY (3) Speakers and QTY (1) Subwoofer in the media center around the 219" display, and AV Rack.
- Offsite trash removal
- Cable Management
- Conduit Work: Install (1) 120v power outlet with cable run and surface mount J-box for the 219" display

Project duration is expected to be up to 3-5 days onsite with a start date to be determined.

- Provide Project Management from inception to close
- Quality Checks by site supervisor

Scope Elements

Wall-Mounted Display, Speakers and new Power Outlet/Cabling

- Unpacking new equipment from shipping boxes, inspecting components for any damage, and promptly notifying manufacturers of any discrepancies or damage found in the shipment.
- Lift included in quote
- Installing QTY (1) 219" Samsung display in the media center
 - Installation of 3 speakers and 1 subwoofer in the Media center in a LCR setup around the 219" Samsung display.
 - Wall mounted.
 - Connecting to the Samsung smart connect box located in data rack.
 - The outlet will be single gang 120v receptacle for the 219" LED Wall
 - The electrical panel is in the same room.
 - Anticipate a 40-foot run.
 - As shown in the images, the walls are brick, conduit or surface mount raceway and a surface mount J-box will be needed.
 - The run will go up from the panel a few feet into a drop tile and then run 20 feet to exit the same room ceiling and land at the location.

- Installing AV Rack QTY (1)
- Installation Materials:
 - 1 foot patch cable QTY: 1
 - Single Gang Extra Deep Junction Box - White JB1DIWH-A QTY: 1
 - Keystone 10606K-BL QTY: 2
 - 2 Port Wall Plate 10600-P2-WH QTY:1
 - Blue Cat6 Cable CAT6PVC2308PWEX QTY:150 feet
 - Half Inch Wiremold Metal Raceway(5foot) CordMate Wire Channel BWH1? QTY: 6
 - 18/2 speaker(Shielded) AV-AUDCBL-18 QTY: 200 feet
 - Surface mount raceway(16feet) ICRWR128WH QTY: 2
 - Misc. Material(Plywood hardware QTY: 1



Project Management

By entrusting STS with your project, our dedicated Project Manager assumes the responsibility of ensuring a seamless, stress-free experience for you. The Project Manager plays a pivotal role by meticulously handling every aspect of the project, so you can rest assured that all the coordination work is expertly managed.

Our Project Manager diligently handles the following tasks:

- Gathers and thoroughly reviews all project documentation, including system design, the scope of work (SoW), and equipment orders.
- Establishes a proficient project team tailored to meet the project's specific requirements.
- Hosts a comprehensive kickoff meeting with the customer stakeholders, introducing the teams, thoroughly reviewing the SoW, and meticulously documenting the communication plan.
- Collaborates with the team to create a project timeline, set key objectives, and define critical milestones.
- Conducts regular cadence meetings at appropriate intervals, ensuring close tracking of project progress.
- Records and circulates detailed meeting minutes that encapsulate action items, status updates, and scheduling specifics.
- Maintains constant vigilance by monitoring and transparently communicating any project-related risks, managing changes effectively, and acting as the primary point of contact.
- Undertakes the crucial project close-out process by auditing deliverables to ensure the SoW is not only completed but also ensures that all objectives are met. They provide a comprehensive summary report along with the essential closeout documentation.

With our Project Manager at the helm, you can be confident that your project is in capable hands. We handle the intricate coordination and management, so you can focus on your core responsibilities while we ensure a successful, on-target project completion.

Project Performance Assurance

At STS Education, we are committed to delivering exceptional quality, maintaining project timelines, and ensuring overall customer satisfaction. To uphold these standards, we employ a comprehensive performance assurance framework:

Quality Standards: Our team is dedicated to adhering to the highest quality standards throughout the project. We ensure that every aspect of our service, from installation to final walkthrough, meets or exceeds industry benchmarks and our internal quality assurance measures.

Timely Execution: We understand the importance of adhering to project timelines. Our commitment includes efficient planning, clear communication, and proactive management to ensure that all milestones and deadlines are met according to the agreed-upon schedule.

Continuous Monitoring: Throughout the project lifecycle, we implement continuous monitoring and assessment. This involves regular evaluations to identify any potential issues or deviations from the project plan, allowing for immediate corrective actions to maintain project alignment.

Customer Collaboration: We believe in transparent and open communication. Regular updates, feedback sessions, and progress reports will be provided to ensure that our clients are informed and engaged at every stage of the project.

Issue Resolution: Should any unforeseen challenges arise, our team is equipped to address and resolve issues promptly. Our goal is to proactively manage and resolve any complications to minimize impact on the project timeline and deliverables.

Customer Satisfaction: Ultimately, our primary objective is customer satisfaction. We will work tirelessly to ensure that the project outcomes align with your expectations and requirements. Any feedback received will be considered and implemented to guarantee the highest level of satisfaction.

This performance assurance framework forms the backbone of our commitment to excellence and ensures a successful and satisfactory outcome for every project we undertake.

About Us

STS EDUCATION is composed of both working and former educators and professionals dedicated to the idea that improving technology can improve learning outcomes and transform lives. We believe that students learn more when it's easier for them to learn. We're dedicated to supporting evolving pedagogies and modernizing and future-proofing K-12 learning spaces.

When you engage with STS you have in your corner a partner who knows educators' unique challenges in acquiring and integrating new learning technology. STS has guided Tech Innovators and Directors, Superintendents and Principals just like you through the technology jungle- for over a decade.

At STS, K-12 Education is all we do.

References:

- Granada Hills Charter High School
- Chatsworth Charter High School
- Palisades Charter High School

Suggested Project Team



Project Management

Leslie Kraff Senior Project Manager

Leslie is a seasoned project manager serving the health, technology, and education industries. Leslie is passionate about helping others succeed and cultivating a delightful customer experience through integrity, transparency, and efficiency. She has a Master's Degree in Physical Therapy from Washington University Medical School and is PMI PMP certified.



Luis Ramirez Project Coordinator

Luis is an experienced project coordinator, bringing years of expertise to all clients with passion and integrity. His specialties encompass technology and educational standards overall. Luis is dedicated to teamwork, bringing everyone together to move towards a common goal. Currently, he is acquiring his PMP to further solidify himself in an industry he is passionate about.

Kimberly Antwine Project Coordinator

Kimberly is unwaveringly committed to delivering a seamless and positive experience throughout the project's lifecycle. Her dedication shines through as she prioritizes not only the timely completion of tasks but also the overall satisfaction of those involved. With a keen eye for detail and a proactive approach, Kimberly ensures that every aspect of the project is executed



with excellence, fostering a collaborative and efficient work environment.



Onsite Services

Spencer Netka Project Superintendent

As Project Superintendent, Spencer takes pride in meeting the customers' expectations by providing seamless and efficient integration, leaving the customer in a better situation than before! Spencer studied Liberal studies at Cal State University, Northridge and has 6 years' experience supervising projects in the industry integrating Physical Security, Wireless Access Points, cabling, AV and many other technologies.

Suggested Project Team

Installation Team

Our installation team is a dedicated group of skilled professionals committed to bringing precision and expertise to every project. With over 10 years of experience in diverse installation environments, our team thrives on overcoming challenges and ensuring seamless execution. From meticulously setting up interactive flat panels to orchestrating complex cabling installations, our specialists work in unison to deliver top-notch results. Their proficiency extends beyond technical know-how; they prioritize clear communication and collaboration to guarantee a positive experience for our clients. With a passion for excellence, our installation team is poised to transform your vision into reality.

Factors Affecting Cost:

Billing:

Billing occurs as milestones are completed. Payment is expected within 30 days of invoice.

Delays:

If significant delays are introduced due to the Client's inability or failure to deliver equipment, respond to requests for information or any other reasonable requirements of the consultant necessary to the completion of the project, additional costs may arise. This may occur as a result of needing to keep personnel on-site while such resources or information are gathered, even though work has effectively stopped. Such additional costs will be the responsibility of the Client. Notice of such additional costs will be given immediately by the Project Manager to the Client's main contact.

Change Management:

If the project scope or deliverables change substantially during the course of the engagement, or it becomes apparent that a design change is necessary to satisfy the requirements of the implementation then a change order must be submitted in writing to the designated project manager prior to any labor related to the changed scope being performed. Both Client and Consultant must agree by signing the Change Order prior to continuing. Consultant and Client will engage in the peer review process for Change Control relative to its impact on labor, products or solutions installed at Client. Consultant and Client will both provide input regarding the progress of the project as well as any potential changes that may result in modifications to the project deliverables, or time line. If these changes impact the scope of the work as defined in this agreement, both parties will agree in writing of any necessary fee adjustments.

Both parties will continue to evaluate Change Controls, which deviate from current objectives of this project on a regular basis.

Exclusions

The Services described in this Agreement constitute the entire Project Proposal.

Out of scope services include but are not limited to:

- Deinstallation of any materials other than what is specified in the scope

Client Responsibilities

The success of our project hinges on the strong partnership between our team and yours. Timely provision of essential information and materials by your team is integral to the seamless execution of the project. Any delays in providing the required information or necessary materials may result in corresponding delays in the project timeline. The customer acknowledges and accepts that such delays could impact on the overall project schedule and agrees to work closely with our team to minimize any potential delays. The client is responsible for:

- Providing room numbers and equipment count for each location before the installation begins.
- Preparing and ensuring an adequate central location for the delivery and assembly of equipment before the start date(s).
- Scheduling a school employee to provide access to the school site during installation phases.
- Promptly notifying PMO@mjp.tech to request any change of scope during the installation process.
- Scheduling a technician to be available to address any technical inquiries that may arise during installation.
- Obtaining any necessary permits required for the installation process.
- Supplying recycling bins and dumpsters to collect waste generated during the installation process.
- Sharing essential information, including a site map, room numbers, onsite contact(s), etc., at least 48 hours before the first day of installation.

Terms and Conditions

All terms and conditions are stated in the [Master Professional Services Agreement](#) to which this Statement of Work serves as an addendum. Any exceptions to those terms and conditions shall be stated herein.

In no event shall either party be liable for any indirect, incidental, special or consequential damages nor shall either party's liability exceed the value of this statement of work.

Acceptance

BY SIGNING BELOW, El Camino Charter High School ACKNOWLEDGES AND AGREES THAT THIS STATEMENT OF WORK IS ACCEPTABLE AS DESCRIBED AND CONSTITUTES A BINDING ADDENDUM TO THE MASTER PROFESSIONAL SERVICES AGREEMENT.

IN WITNESS WHEREOF, each of the parties hereto has caused this Agreement to be executed by duly authorized representatives of the parties.

Signatures

El Camino Charter High School:

STS EDUCATION, a Division of Pacific
OneSource, Inc.:

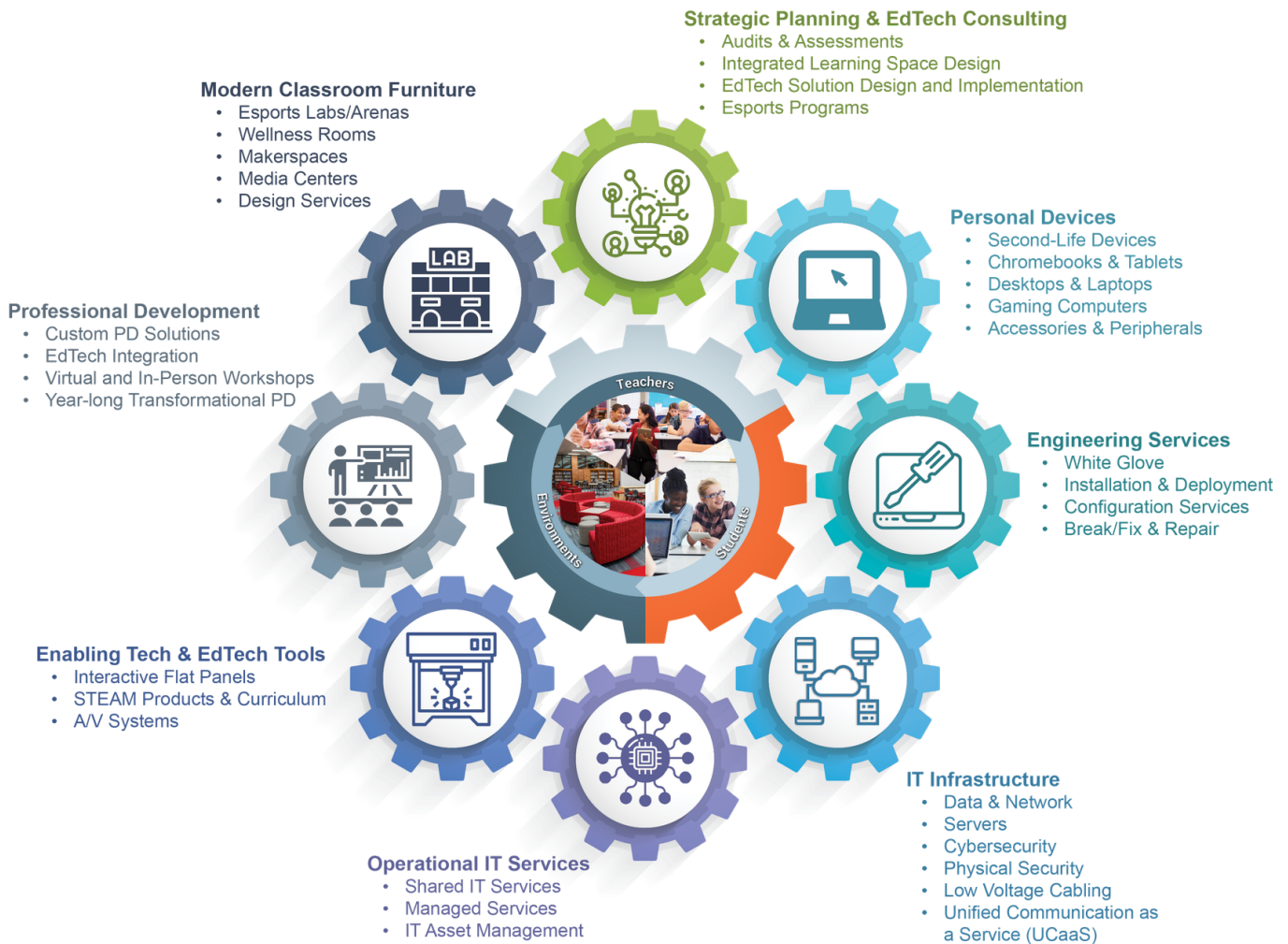
Ryan Guinto
CTO

Atif Myers
Account Executive

Purchase Order Number (if applicable):

And there is so much more...

Pacific OneSource is a comprehensive K12 EdTech solution provider. Please let us show you how we can support your vision across any aspect of leveraging technology to advance your mission and program.





Company Address	130-A W. Cochran St. Simi Valley, CA 93065 US	Created Date	2/22/2024 3:27 PM
		Expiration Date	5/17/2024
		Quote Number	Q-36617
Prepared By	Atif Myers	Account Name	El Camino Real Charter High School (CA)
Sales Email	atif.myers@stseducation-us.com	Contact Name	Fernando Delgado
Sales Phone		Contact Phone	(818) 595-7517
Fax	(888) 801-3381	Contact Email	f.delgado@ecrchs.net
Bill To Name	El Camino Real Charter High School (CA)	Ship To Name	El Camino Real Charter High School (CA)
Bill To	5440 VALLEY CIRCLE BLVD WOODLAND HILLS, CA 91367-5996	Ship To	5440 VALLEY CIRCLE BLVD Woodland Hills, CA 91367-5996

219 2 pixel pitch

Quantity	Product Name	Product Description	Sales Price	Calculated Total Price
26	Misc Panel - New	SAMSUNG:New IEA Fine Pitch Indoor Direct View LED Cabinet (P2.0)	\$2,079.60	\$54,069.60
1	Misc Panel - New	SAMSUNG:Samsung IER series Frame Kit 5X2	\$1,482.39	\$1,482.39
1	Misc Panel - New	SAMSUNG:Samsung IER series Frame Kit (5x3)	\$1,697.85	\$1,697.85
2	Misc Panel - New	SAMSUNG:Service Moudle Jig for IER Series	\$290.40	\$580.80
2	Misc Panel - New	SAMSUNG:UHD S-BOX (4K)	\$2,343.60	\$4,687.20
1	Misc Network Component - New	12u 24"D Wall Mount Rack	\$1,388.52	\$1,388.52
1	Installation Services	Installation Services per SOW for Samsung 219" LED Wall	\$4,293.75	\$4,293.75
1	Service Parts and Materials	Services - Parts and Materials	\$653.19	\$653.19
5	Misc Panel - New	NEW SAMSUNG 55-INCH BEC SERIES COMMERCIAL TV CRYSTAL UHD DISPLAY, 250NIT, 16/7 3 YEAR WARRANTY	\$542.30	\$2,711.50
1	Installation Services	Installation Services per SOW for Qty 5 55" Samsung TVs	\$1,250.00	\$1,250.00
219 2 pixel pitch TOTAL:				\$72,814.80

Installation for Speakers

Quantity	Product Name	Product Description	Sales Price	Calculated Total Price
2	Misc Accessory - New	JBL H O 2 Way Line Array	\$2,180.00	\$4,360.00

Quantity	Product Name	Product Description	Sales Price	Calculated Total Price
1	Misc Accessory - New	JBL AC28 26 Dual 8" 2 Way	\$1,060.50	\$1,060.50
1	Misc Accessory - New	CROWN CDi DriveCor 4 1200Amp	\$2,466.82	\$2,466.82
1	Misc Accessory - New	CROWN 4x300W Power Amplifier	\$1,387.20	\$1,387.20
2	Misc Accessory - New	JBL Professional COL600 Wall Mount	\$245.88	\$491.76
1	Misc Accessory - New	JBL SRX815P 2000 Watt 2Way System	\$1,484.55	\$1,484.55
2	Misc Accessory - New	JBL 8" 2 Way Surface Spkr Wht	\$255.18	\$510.36
1	Misc Accessory - New	AKG Base Unit	\$1,166.99	\$1,166.99
6	Misc Accessory - New	AKG Delegate 50cm 20"Gsnck	\$271.32	\$1,627.92
1	Misc Accessory - New	AKG Chairman 50cm 20"Gsnck	\$341.23	\$341.23
1	Misc Accessory - New	AKG CS3 50 Meter Cable	\$421.90	\$421.90
2	Misc Accessory - New	IntelliSHOT USB PTZ Camera	\$1,878.76	\$3,757.52
1	Misc Accessory - New	16 Channel 9.1.6 Discrete Dolby Atmos & DTS:X Cinema Processor	\$2,750.00	\$2,750.00
1	Misc Accessory - New	Atlas Sound AS2RCA-1M-PHX Male RCA to Phoenix Connector Cable	\$36.00	\$36.00
11	Misc Accessory - New	PHX to XLR Adaptor female	\$19.50	\$214.50
3	Misc Accessory - New	4 Channel XLR Snake Cable - 5 Feet Long - Pro Audio Snake for Live Live, Recording, Studios, and Gigs - Patch, Amp, Mixer, Audio Interface 5	\$36.00	\$108.00
1	Installation Services	Installation Services per SOW for Qty 4 speakers	\$2,143.05	\$2,143.05
1	Service Parts and Materials	Services - Parts and Materials	\$200.00	\$200.00
Installation for Speakers TOTAL:				\$24,528.30

Total Price	\$97,343.10
Tax	\$8,517.36
Grand Total	\$105,860.46

All sales are subject to applicable sales tax at the time of shipment.

Financing options are available with approved credit.

STS Education stands behind the products and services we provide. For more information on our warranties and guarantees, visit: [stsed.com/lifetime-parts-warranty/](https://www.stsed.com/lifetime-parts-warranty/).

<https://www.stseduction-us.com/>