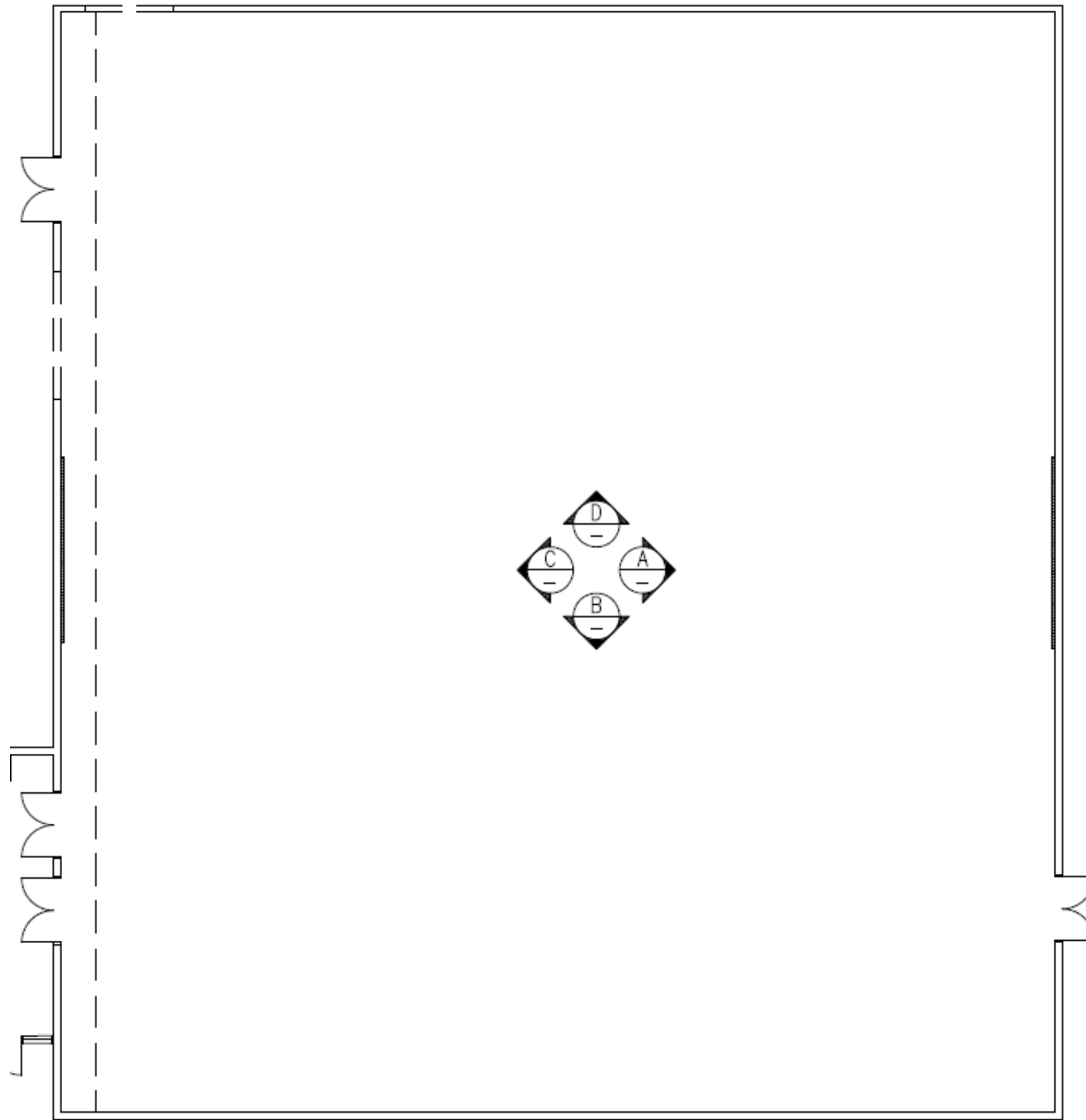
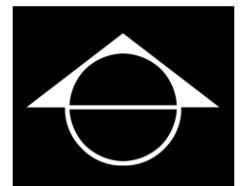


Exclusively For:

ECRCHS Gymnasium



GYMNASIUM ELEVATION PLAN





A INTERIOR ELEVATION A
ECRCHS GYMNASIUM

AW1a



AW1b



Seam shown at corner

AW1a&b

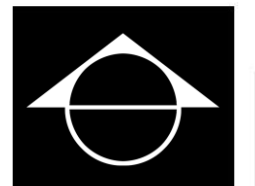
(b shown on this elevation, a located on Elevation D)

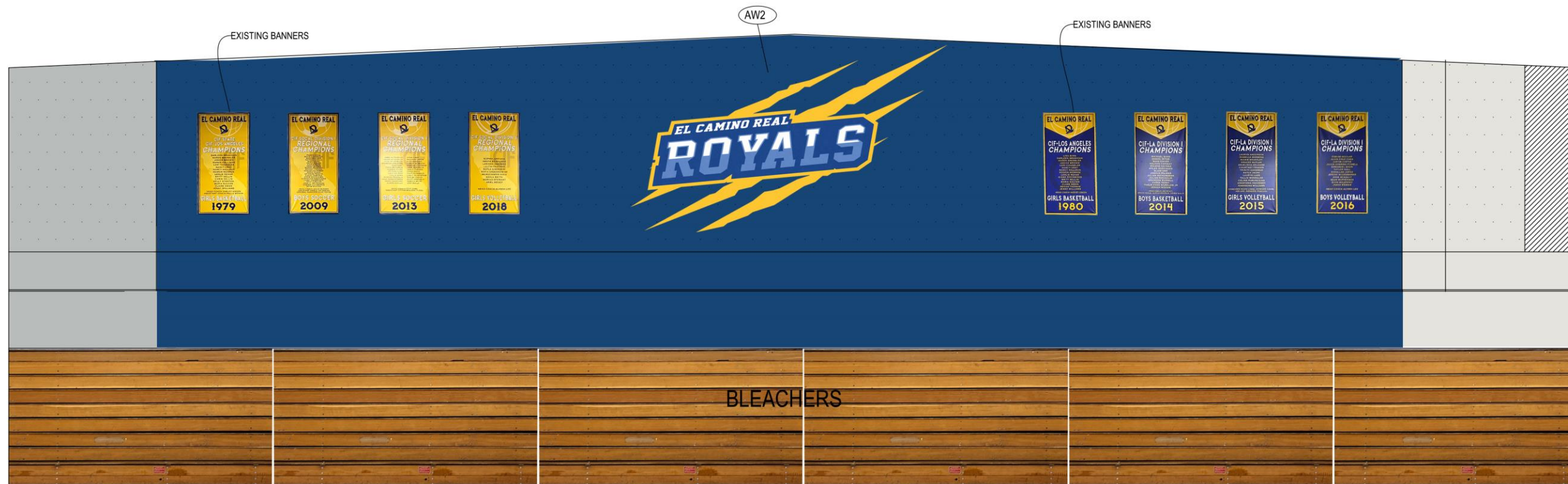
Direct print on 3M 480c Roughall.

Adhered to wall permanently with high heat.

Overall Size of AW1a: 50.75"W x 182.375"H

Overall Size of AW1b: 114.5"W x 231.625"H

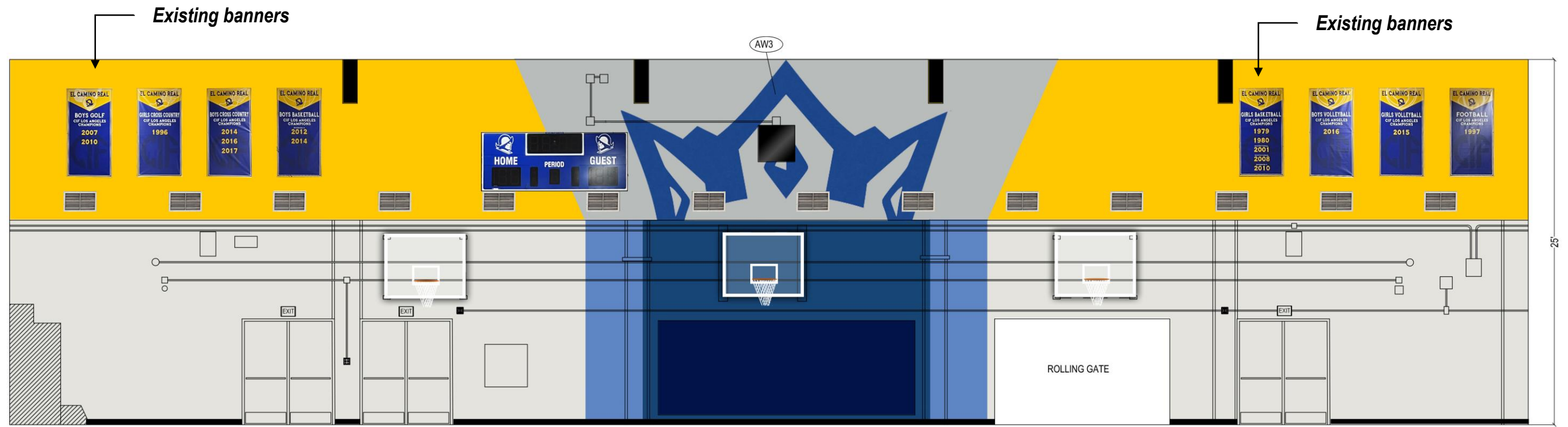




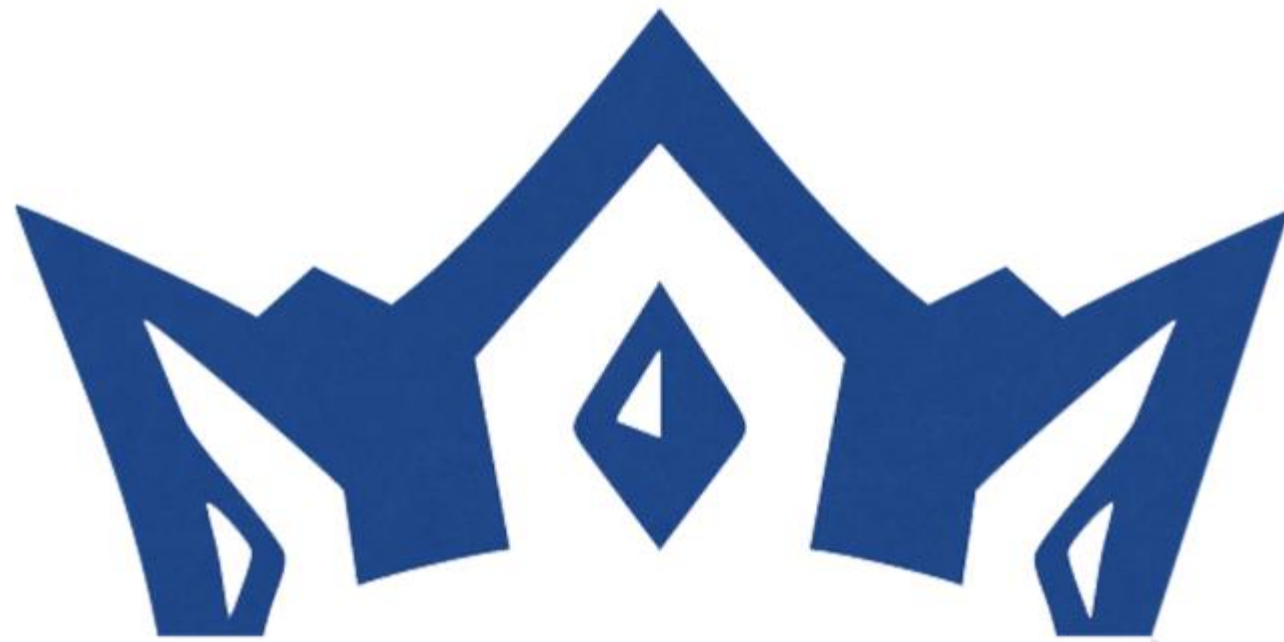
B INTERIOR ELEVATION B
ECRCHS GYMNASIUM



AW2
Print on 6mm Black PVC cut to shape
and wall mounted with snap caps.
Overall Size: 326"W x 143.25"H



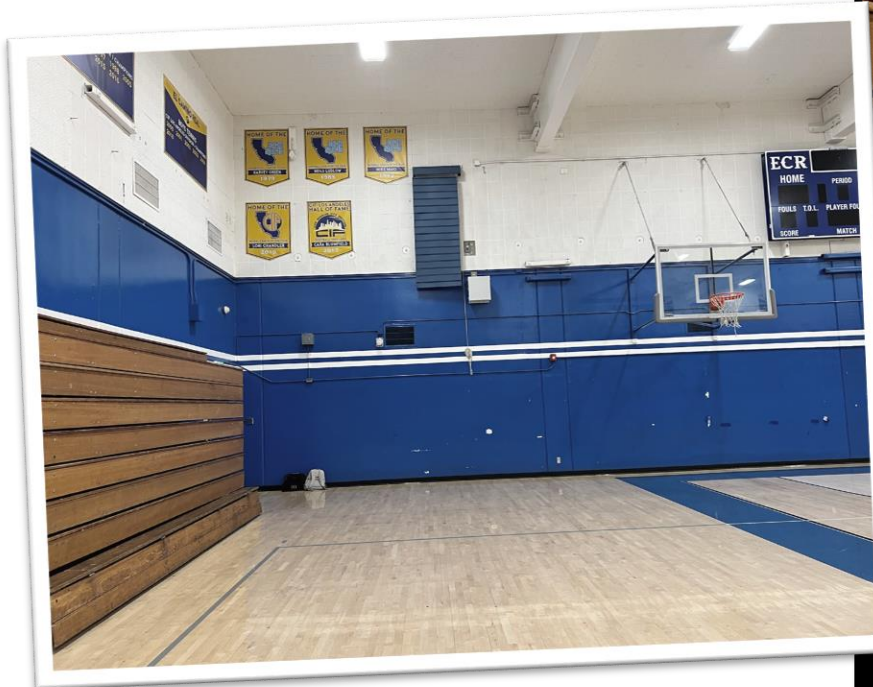
C INTERIOR ELEVATION C
ECRCHS GYMNASIUM

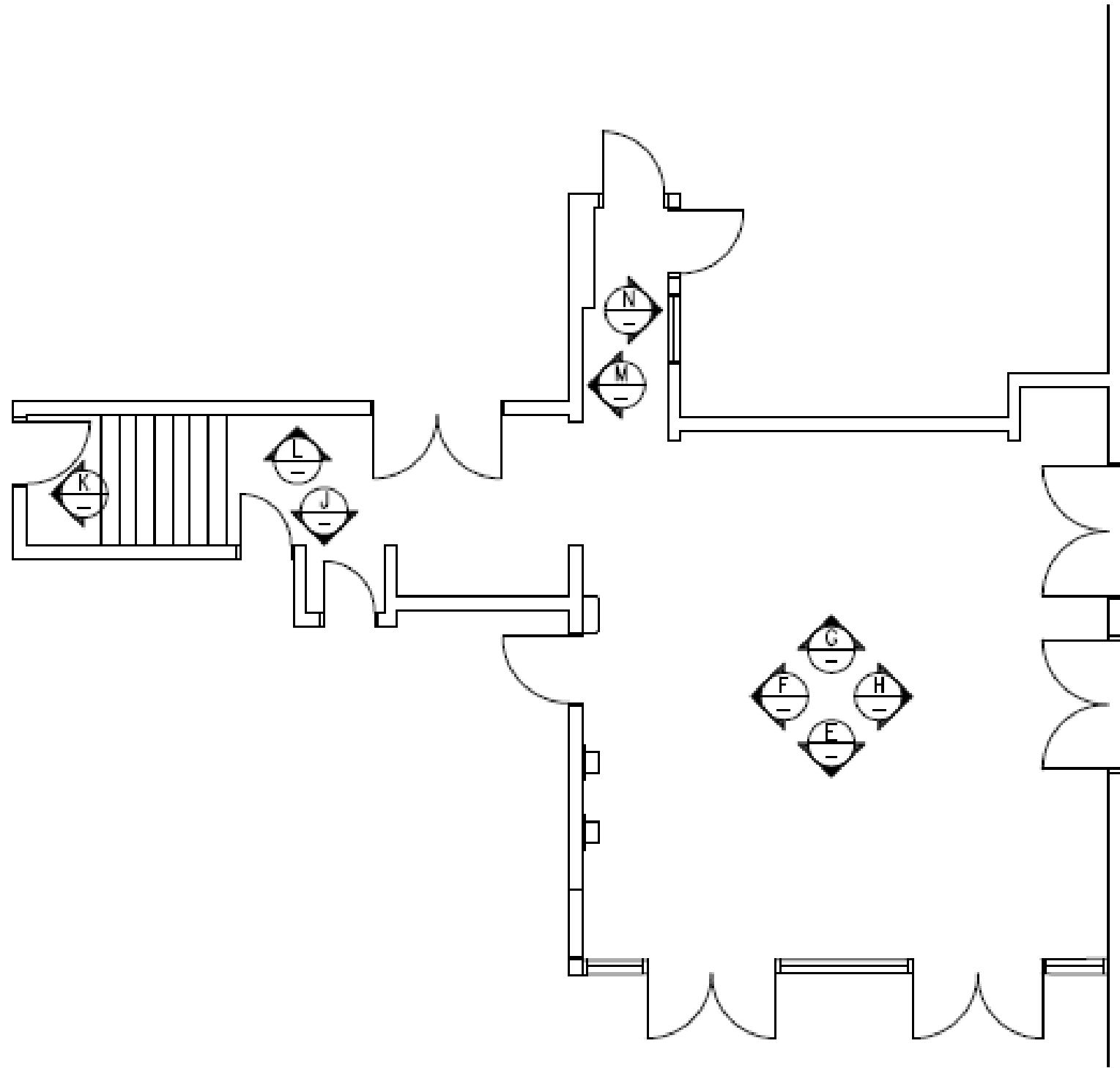


AW3
Print on 6mm Black PVC cut to shape and wall mounted with snap caps.
Overall Size: 268"W x 129.875"H

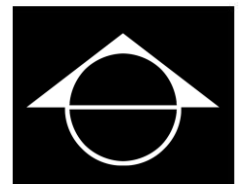


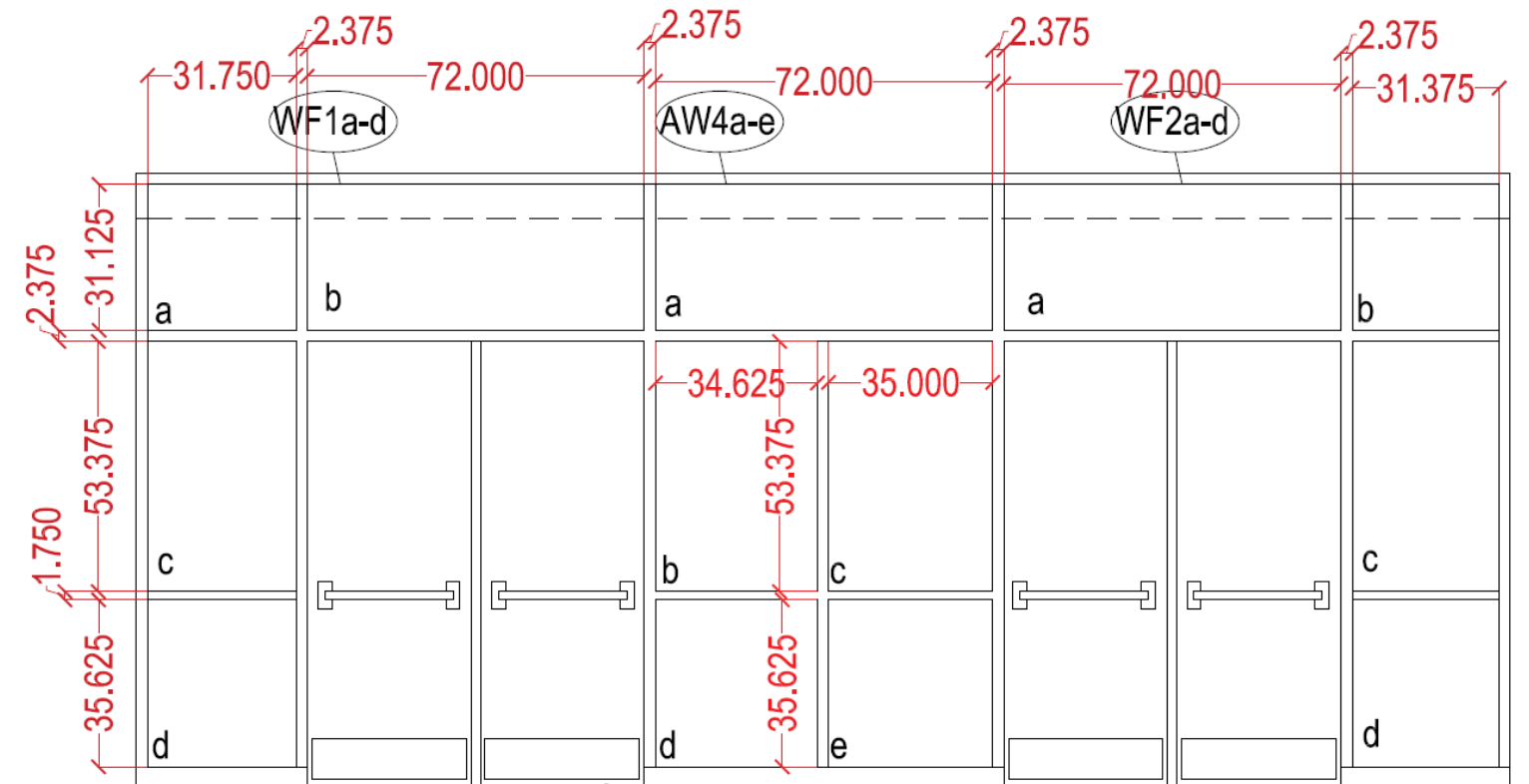
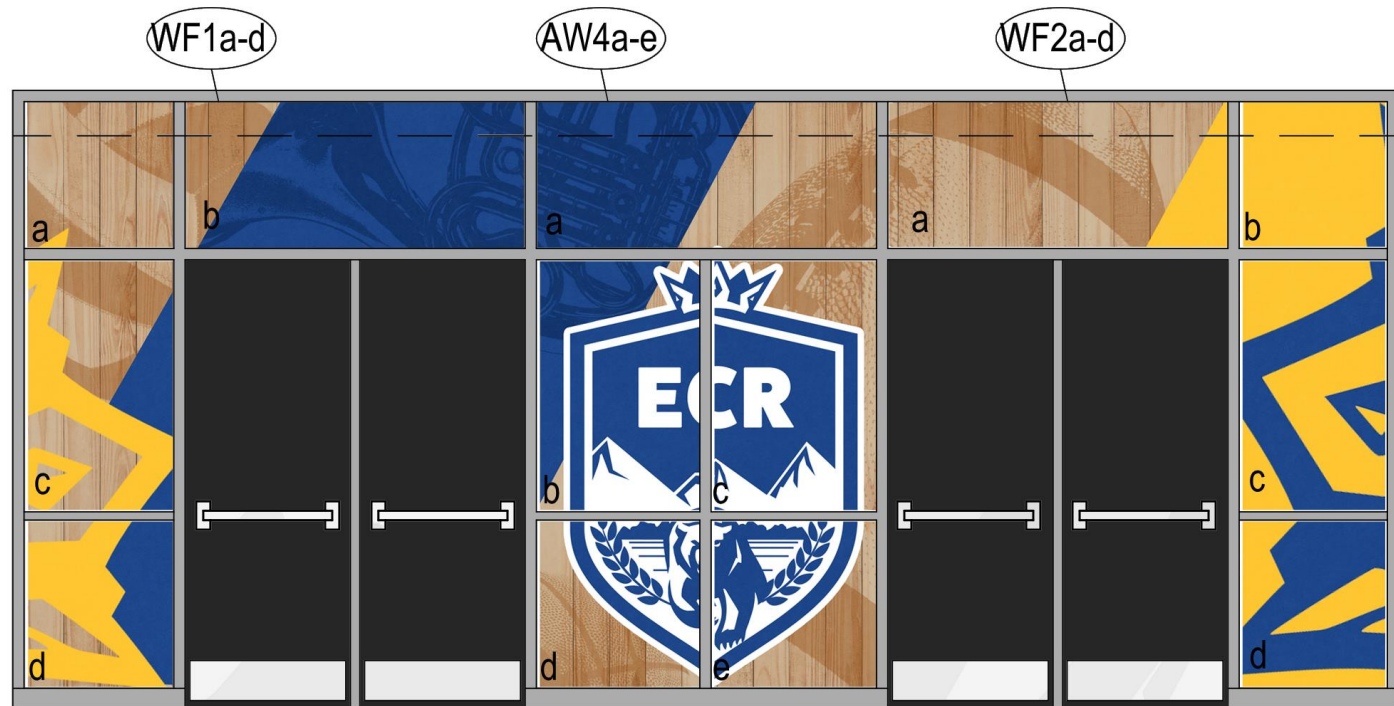
D INTERIOR ELEVATION D
ECRCHS GYMNASIUM





GYM FOYER ELEVATION PLAN





E INTERIOR ELEVATION E
ECRCHS GYMNASIUM FOYER



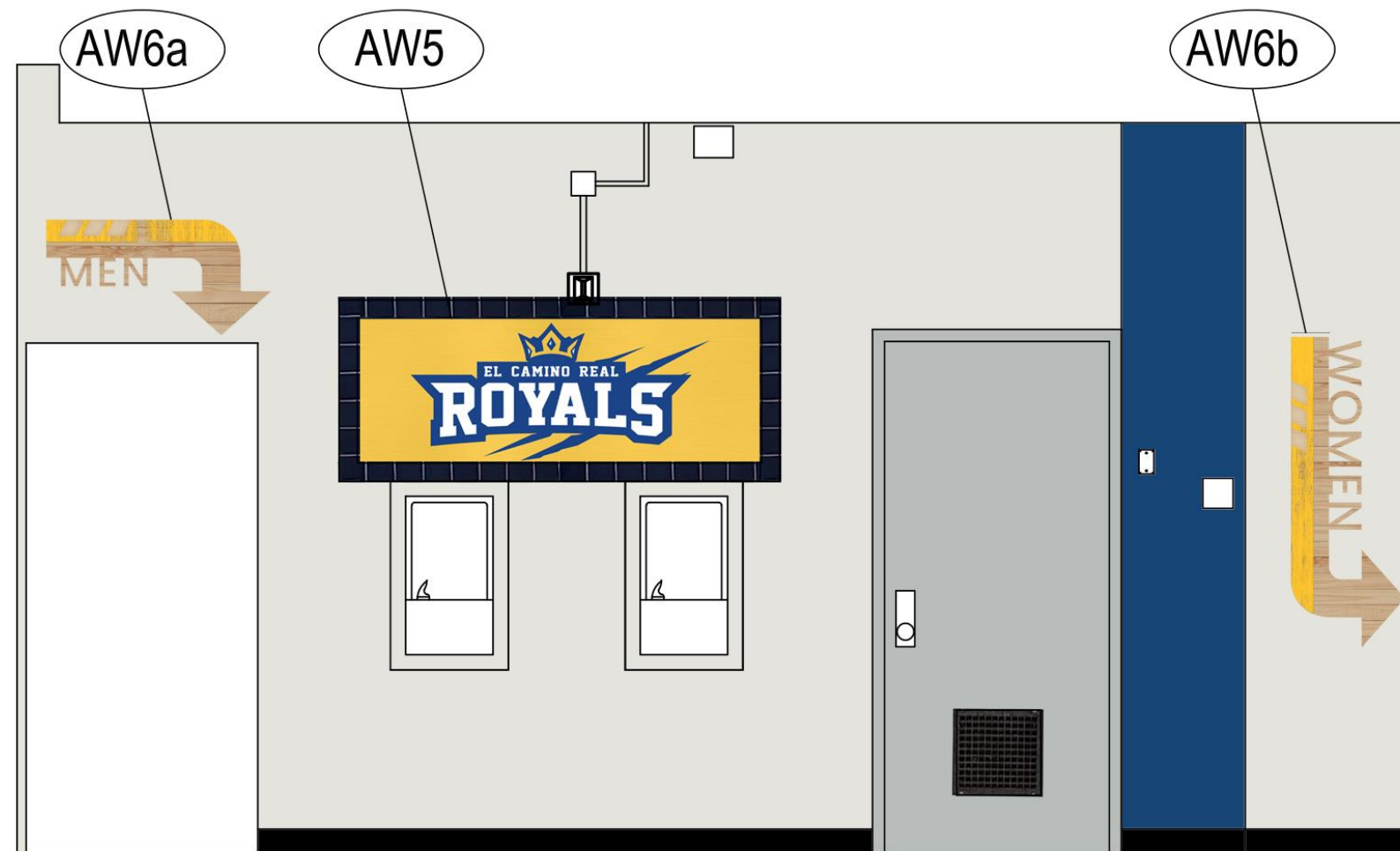
Image of existing door/window wall



WF1a-d
Perforated window film, applied to interior side of window glass, imagery to be seen from the inside
See sizes above

AW4a-e
Print on 3mm White Dibond, adhered to painted (?) glass.
See sizes above

WF2a-d
Perforated window film, applied to interior side of window glass, imagery to be seen from the inside
See sizes above




INTERIOR ELEVATION F
 ECRCHS GYMNASIUM FOYER



OPTION A



OPTION B

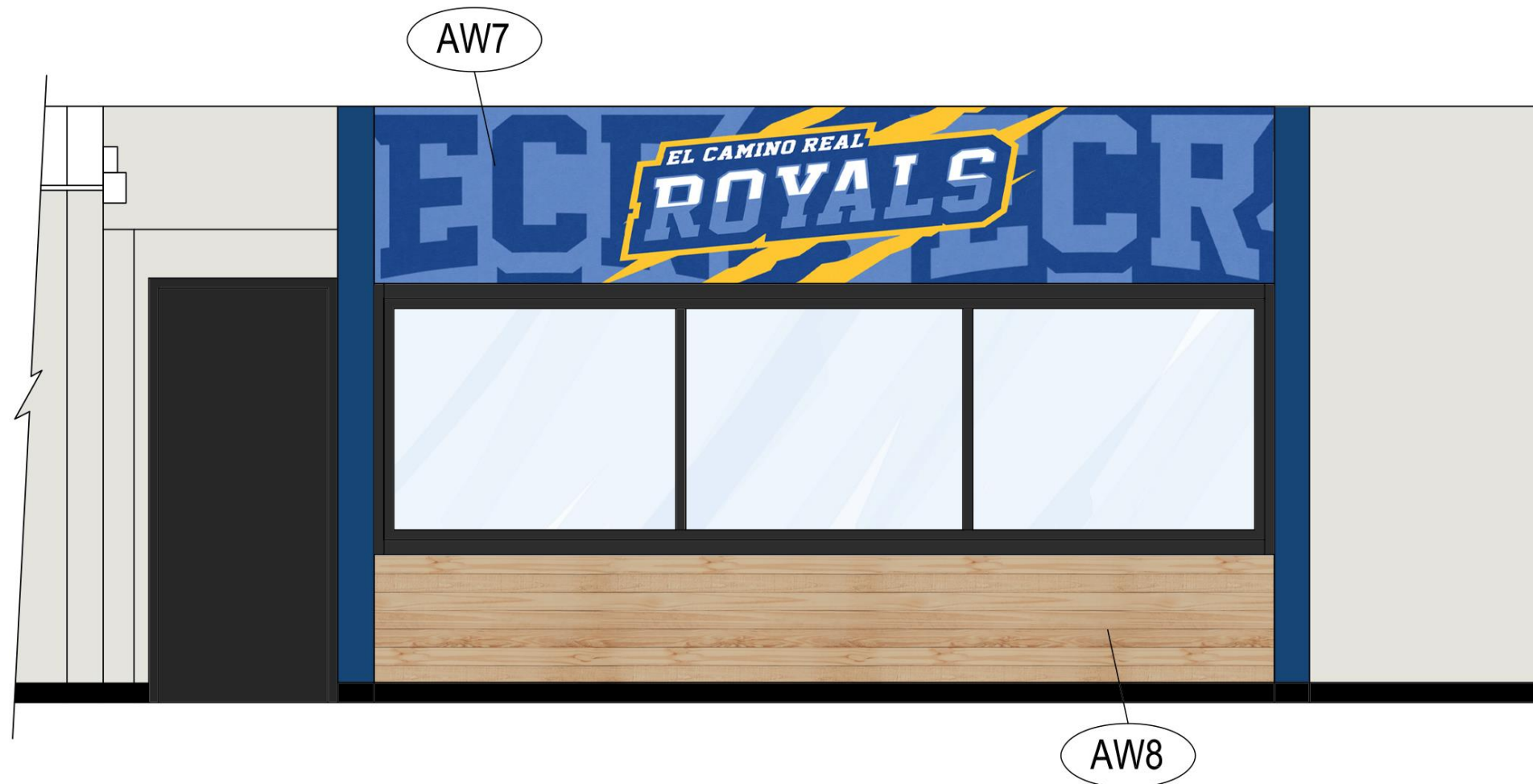
AW5 (OPTION A & B)

Print on 6mm Black PVC, mounted to the wall with snap caps.
 Black boarder shown on elevation is existing tile.
 Overall Size: 67"W x 24"H



AW6a&b

Direct print on 3mm White Dibond, cut to shape and wall mounted with snap caps.
 Size of AW6a (MEN): 37.25"W x 19.25"H
 Size of AW6b (WOMEN): 19.25"W x 51"H




INTERIOR ELEVATION G
 ECRCHS GYMNASIUM FOYER



OPTION A



OPTION B (SHOWN ON ELEVATION)

AW7 (OPTION A & B)

Direct print on 3mm White Dibond, wall mounted with aluminum screw caps.

Overall Size: 182.875"W x 36"H



OPTION A



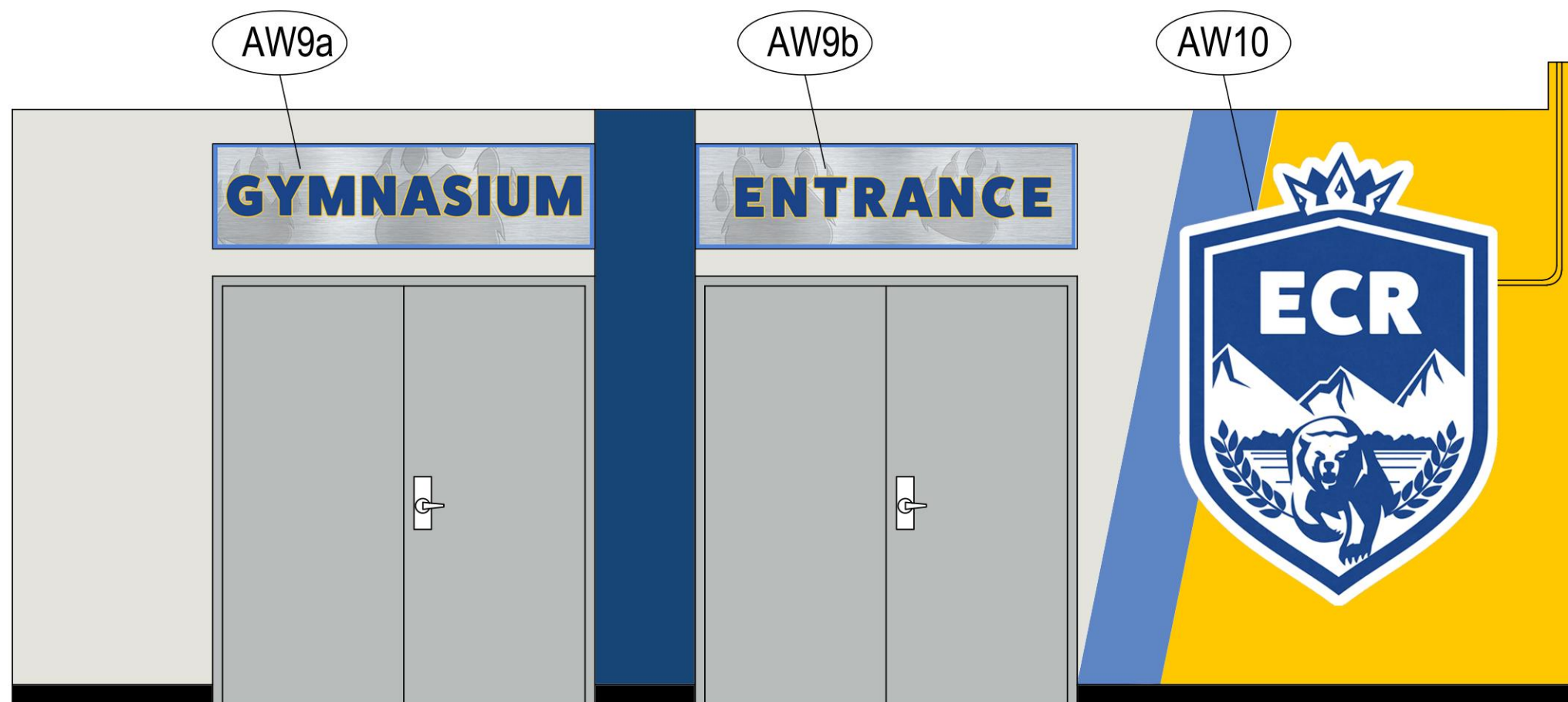
OPTION B (SHOWN ON ELEVATION)

AW8 (OPTION A & B)

Direct print on 3mm White Dibond, wall mounted with aluminum screw caps.

Overall Size: 182.875"W x 26"H






INTERIOR ELEVATION H
 ECRCHS GYMNASIUM FOYER



AW9a-b

Direct print on 3mm Silver Dibond, wall mounted with aluminum screw caps.

Overall Size of Each: 77.75"W x 21.375"H



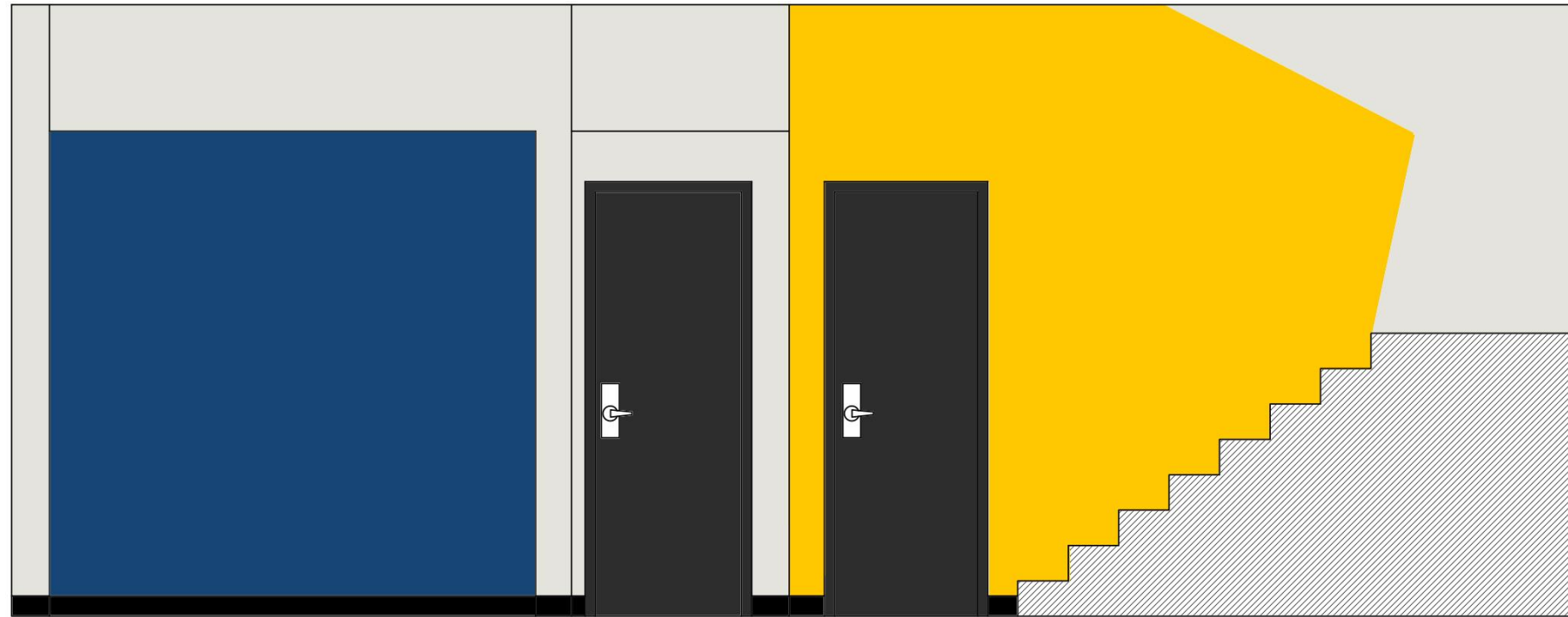
AW10

Direct print on 6mm White PVC, mounted off the wall with 2" Silver Standoffs.
Note: Gray box is there so you can see the white outline against the white page.

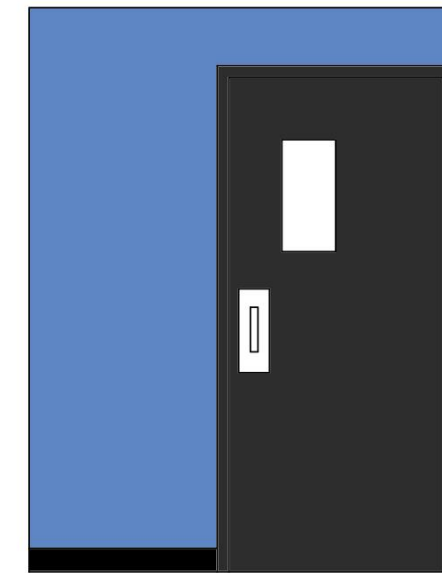
Overall Size: 62"W x 92.125"H



PAIN T ONLY

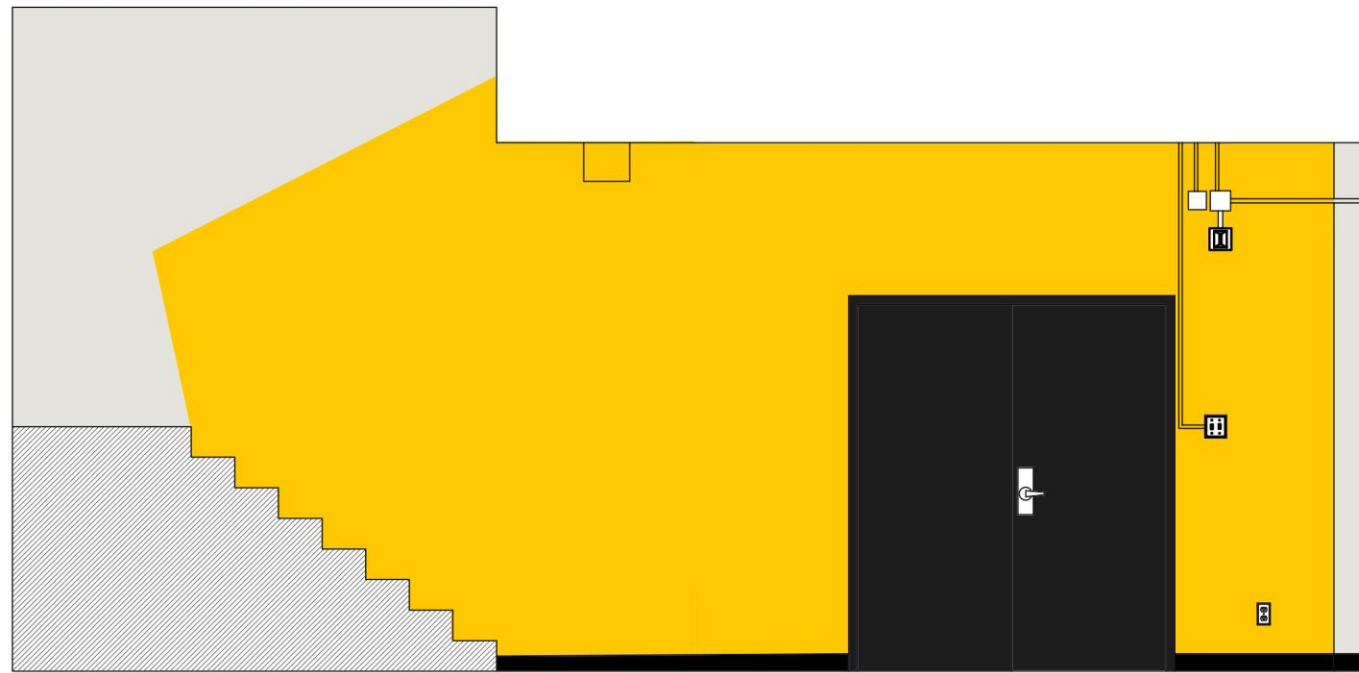


 INTERIOR ELEVATION J
ECRCHS GYMNASIUM FOYER

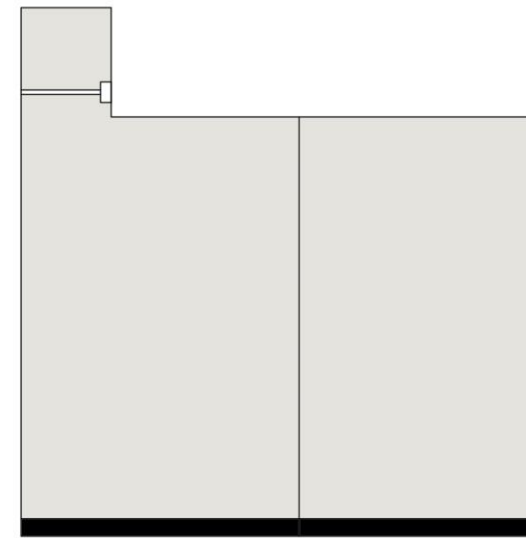


 INTERIOR ELEVATION K
ECRCHS GYMNASIUM FOYER

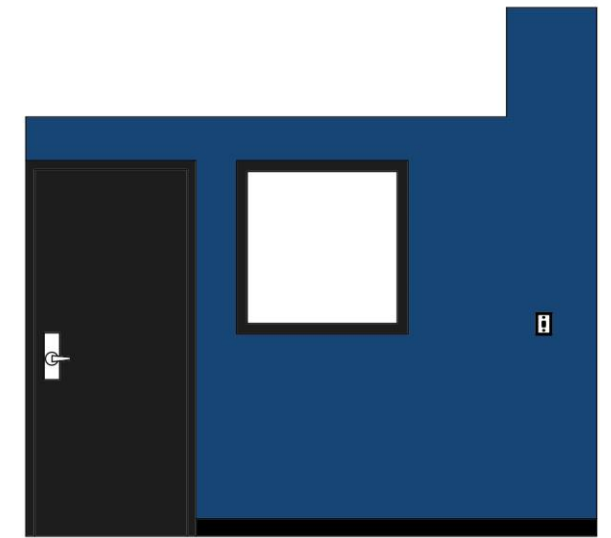
PAIN T ONLY



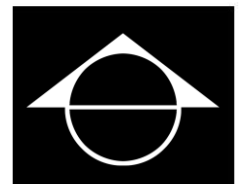
 **INTERIOR ELEVATION L**
ECRCHS GYMNASIUM FOYER

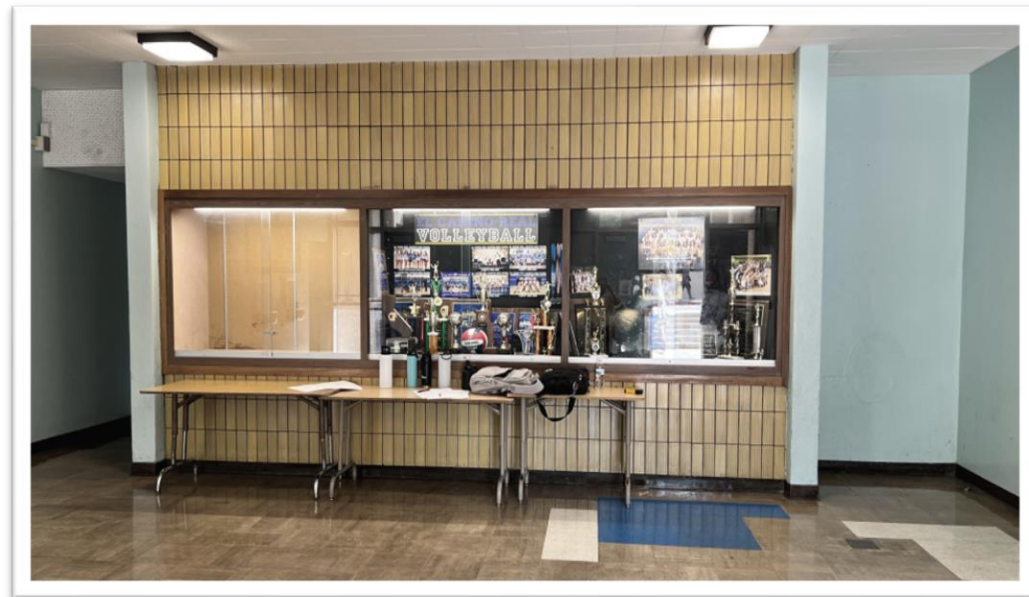
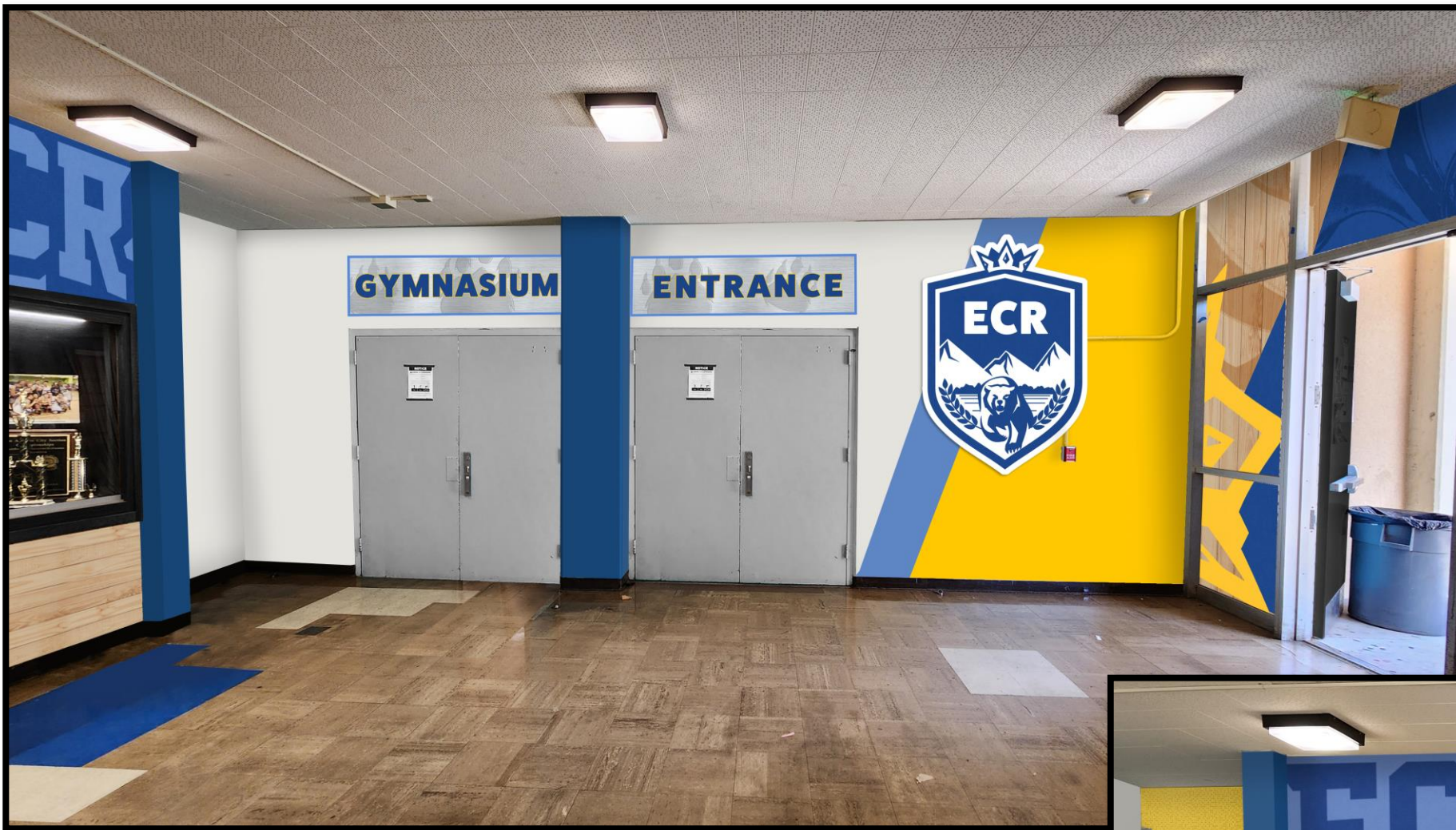


 **INTERIOR ELEVATION M**
ECRCHS GYMNASIUM FOYER



 **INTERIOR ELEVATION N**
ECRCHS GYMNASIUM FOYER





<p>SW 6991 Black Magic Interior / Exterior Location Number: 251-C3</p> <p>PT1</p>	<p>SW7071 Gray Screen Interior/Exterior Location Number: 253-C1</p> <p>PT2</p>	<p>SW 6203 Spare White Interior / Exterior Location Number: 258-C1</p> <p>PT3</p>	<p>SW 6811 Honorable Blue Interior / Exterior Location Number: 179-C7</p> <p>PT4</p>	<p>SW 6907 Forsythia Interior / Exterior Location Number: 131-C4</p> <p>PT5</p>	<p>SW6801 Regale Blue Interior/Exterior Location Number: 177-C4</p> <p>PT6</p>
--	---	--	---	--	---

School is responsible for materials and labor

PH is responsible for materials and labor

PREPARATION

Walls need to be properly prepped and sanded for proper paint adhesion. We then recommend one light coat of XIM Peel Bond Primer to be applied. After that primer is applied, two coats of Precoat Epoxy will be applied over the Peel Bond. Paint needs to cure at least 2 weeks prior to installation.

SHEEN

Satin sheen is recommended for easy cleanability. If a different sheen is desired, please let the designer know.



PROJECT HISTORY

PRELIM DATE: 1.20.23

REVISION 1:

FINAL BOOK APPROVAL

*Signing below indicates all project furniture quantities, colors, laminates, paint, graphic content & all other design elements have been reviewed and will receive no additional revisions. Any revisions requested beyond final book approval will incur additional charges and extended lead times.

**Client indicates an understanding that materials, colors, and artwork in this book are digital representations only and there may be variation in appearance due to screen calibration and/or color print anomalies.

Print Name: _____ Title: _____

Signature: _____ Date: _____



TERMS & CONDITIONS

TRASH REMOVAL

Dumpsters and trash haul away are not part of any provided installation pricing. Any waste, dunnage or packaging materials from delivery and installation will be compacted and neatly left on site. If dumpsters are required, special arrangements will be made with costs included on quote.

NEW or REMODEL PROJECTS

Palmer Hamilton is NOT responsible for site verifications unless they have entered into a design agreement contract with the customer. Dealer/end-user takes full responsibility of ensuring furniture and décor will fit. Please *verify* room dimensions prior to ordering. If drawing was scaled, traced or copied, please field verify all room dimensions for accuracy. If field dimensions can not be obtained, late shipments may occur.

Do not scale off these plans. If scaled plans are needed, please contact the project manager.

Palmer Hamilton is not responsible for changes, or deletions not reviewed and approved in advanced by Palmer Hamilton.

If half-walls or furnishings are to be clipped-down to floor, the Dealer/End-user is responsible to inform Palmer Hamilton of the locations. Palmer Hamilton is not responsible or liable for any electrical or plumbing that may be in the floors.

Please advise Palmer Hamilton if there is Asbestos in or around the location of the installation.

ADA COMPLIANT SEATING

A minimum of 5% but not less than one table shall be placed for wheelchair compliance. Palmer Hamilton is not responsible if the client has requested to provide less than this number in their facility. It is the responsibility of the end user to meet the compliancy standards.

It is also the responsibility of the end user to know their fire code capacity limits.

ELECTRICAL

Palmer Hamilton will suggest and supply the light fixtures if requested by the customer.

Palmer Hamilton installers do not install light fixtures as our installers are not electrical contractors and do not hold local licenses. School is responsible for all wiring and hooking up of the light fixtures. Palmer Hamilton will supply a lighting fixture plan of requested locations for the Schools electrician to use for placement of lighting fixtures

WINDOWS

School is responsible for any/all repair of window glass, trim and window caulking if necessary, prior to the installation.

School is responsible for cleaning of windows for window cling installation. If windows are not cleaned prior to installation, Palmer Hamilton will assess an additional charge for cleaning.

School is responsible for removing any window treatments that are not staying in new design.

WALLS

School is responsible for cleaning walls of any and all hooks, bulletin boards not remaining in design, loose wiring, removable clocks, conduit if not necessary.

Repair/Patching of any broken drywall and cracks in CMU, prior to installation.

Any newly constructed walls must be primed and painted prior to installation.

Any painting that is not supplied by Palmer Hamilton needs to be completed fourteen (14) days prior to our installation to properly cure.

CEILING

Palmer Hamilton does not sell or install standard ceiling tiles. Palmer Hamilton will remove or replace tiles if it is part of a décor item only. Our installers will only install any décor that might be attached to the ceiling and not to the tile grid for safety reasons as required.

FLOORING

Palmer Hamilton may specify a suggested flooring, but takes no liability in regard to floor performance, installation, and/or upkeep.

Any new flooring must be completed fourteen (14) days prior to installation to allow ample curing time of adhesives, and cleaning of flooring must also be completed prior to Palmer Hamilton installers being onsite for installation.

If Nonstandard glides are needed, it is the responsibility of the end-user to inform Palmer Hamilton of the type needed and cost will be added to the quote.

Vinyl Base trim must be completed prior to Palmer Hamilton furniture installation, unless the decision was made during the design phase by the client to have Palmer Hamilton installers install the base trim.

EXISTING EQUIPMENT AND FURNITURE

Please remove all equipment and furniture that is not to be in the new design plan prior to Palmer Hamilton's arrival.

I agree to terms & conditions

Signature _____ Date: _____

