



# Empowering Education:

## Harnessing AI for Student Success

*April 11, 2024*

# 3 Main Kinds of Artificial Intelligence

ANI - Artificial Narrow Intelligence:

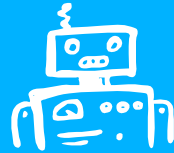


Machine Learning

- Specializes in one area and solves one problem



AGI - Artificial General Intelligence:



Machine Intelligence

- Refers to a computer that is as smart as a human across the board

*AGI is still largely theoretical and has not been achieved.*

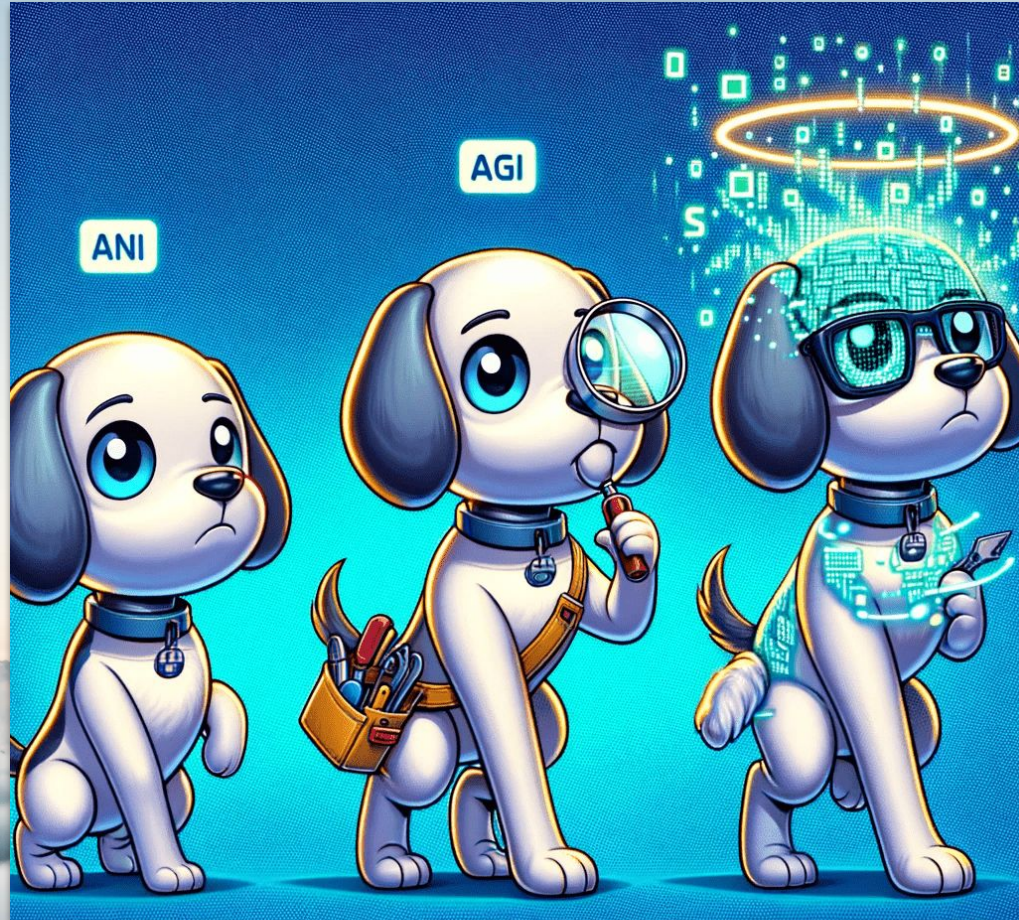
ASI - Artificial Superintelligence:



Machine Consciousness

- An intellect that is much smarter than the best human brains in practically every field

*ASI, if ever achieved, would have the potential to outperform humans in virtually every intellectual and creative endeavor.*



ANI

AGI



*How can we harness  
the power of AI for  
our benefit, rather  
than attempting to  
reverse its release?*



# *Ready or not, it's here!*

1.

**Embrace ChatGPT  
and other AI tools...**

To make your work easier!

2.

**Let AI...**

Make lessons more  
interesting, differentiated,  
and hands-on.

3.

**Teach children to use  
AI...**

Properly while improving  
their critical thinking skills.

## AI isn't perfect

- A system designed and taught by human beings = potential for errors
- Can contain bias and discrimination present in the data they are trained on
- Essential to establish safeguards and accountability measures throughout the development process.

## AI isn't human

- Lacks the ability to understand and respond to emotions
- Empathy and emotional support are crucial in educational settings

## AI is just technology

*“Some people call this artificial intelligence, but the reality is this technology will enhance us. So instead of artificial intelligence, I think we’ll augment our intelligence.”*

- Ginni Rometty, former CEO of IBM

# How AI Can be Used vs. Abused

Acceptable	Unacceptable
Student adds their research into AI and asks it to organize the information in an outline.	Student enters the prompt into the AI and asks it to generate an essay response.
Student adds their thesis into AI and asks it to provide ideas that support the thesis.	Student adds their thesis into AI and asks it to provide topic sentences that support the thesis.
Student use AI like a database. They can ask AI to provide the scholarly research on a topic that includes the author's name, title of the article/book and a summary of the content. Only material that can be cited can be used or this is plagiarism.	Students give AI their topic sentence and ask them to come up with supporting evidence. (No citations= plagiarism!)
Student enters their essay into AI and asks it to find the grammatical errors.	Student enters their essay into the AI and asks it to rewrite the essay to improve the style and grammar.

***If you are asking AI to do something that you wouldn't ask your parent, librarian, or teacher to do to help you reach the end goal, then it is probably academic dishonesty.***

# APPLICATIONS OF AI IN EDUCATION

## Smart Content

With AI, textbooks could be split into small chunks of digestible guides, easier to read and understand.

## Personalized Learning

AI can adapt quickly to individual needs and deliver personalized learning methodologies driven by the learners' interests.

## Data Accumulation

Using previous search queries, AI in education can suggest related content for the students.

## Virtual Facilitator

AI facilitators can think, act, and react to the students' queries and act as an assistant for the teacher.

## Proctoring

AI-powered systems ensure the authenticity of the student to take the exam and prevent from cheating.





# Ways to Use AI in Education

## Behavior Management

Real Time monitoring, Parent Communication, Personalized Feedback, Voice Analysis

01

## Gamified Learning Engagement

Automated Content Generation, Intelligent Game Design, Personalized Lesson Plans, Adaptive lessons

02

## Staff Scheduling & Management

Automated Scheduling, Real-time updates, Workload balancing, Compliance monitoring

03

## Assessment

Automated scoring, Adaptive testing, Bias detection, Plagiarism detection

04

## Tutoring

Personalized assistance, Real-time variations, Evaluate learner strengths and areas of need, Immediate Feedback

05

## Cyber Safety & Security Management

Threat detection, Anomaly detection, Vulnerability Management, Security Analytics & Reporting

06



# Ideas for Teachers to use ChatGPT to Plan Instruction

01

Create lesson/unit plans, including differentiated plans

02

Create scenarios and exemplars for small groups.

03

Exam review handouts

04

Generating rubrics

05

Placing students in groups

06

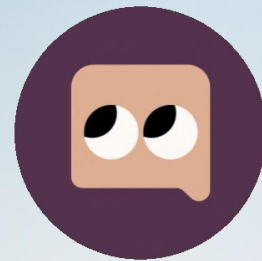
Brainstorming fun ideas for projects, labs, etc.



**KHANMIGO**

by  Khan Academy

Meet Khanmigo,  
Khan Academy's  
AI-powered teaching  
assistant & tutor



*Khanmigo is the only AI tool that is incorporated with Khan Academy's world-class content library that covers math, humanities, coding, social studies, and more.*



Play at 5:00; stop at 7:45

# MAGIC SCHOOL

AI made specifically for educators

60+ AI tools to help you lesson plan, differentiate, write assessments, write IEPs, communicate clearly, and more.

All Tools

Sort by Most Popular



### Multiple Choice Assessments

Create a multiple choice assessment based on any topic, standard(s), or criteria!



### Report Card Comments

Generate report card comments with a student's strengths and areas for growth.



### Lesson Plan

Generate a lesson plan for a topic or objective you're teaching.



### Text Rewriter

Take any text and rewrite it with custom criteria however you'd like!



### YouTube Video Questions

Generate guiding questions aligned to a YouTube video.



### Informational Texts

Generate original informational texts for your class, customized to the topic of your choice.



### Academic Content

Generate original academic content customized to the criteria of your choice.



### Text Dependent Questions

Generate text-dependent questions for students based on any text that you input.



### Rubric Generator

Have AI write a rubric for an assignment you are creating your class in a table format.



### IEP Generator

Generate a draft of an individualized education program (IEP) customized to a student's needs.



### Student Work Feedback

Based on a custom criteria, have AI give areas of strength & areas for growth on student work.



### Text Leveler

Take any text and adapt it for any grade level to fit a student's reading level / skills.



### Professional Email

Generate a professional e-mail communication to colleagues and other professionals.



### Text Summarizer

Take any text and summarize it in whatever length you choose.



### Text Translator

Take any text and translate it into any language instantly.



### Math Story Word Problems

Write a custom math word / story problem based on the concept you're teaching and a story topic.



### Teacher Jokes

Generate teacher jokes for your class to be the coolest teacher out there!



### E-mail Family

Generate a professional e-mail communication to families and translate into multiple languages.





Create ideas for small group instruction in first grade reading.

Create lesson/unit plans, including differentiated plans

Make it Relevant

# Tools to Benefit Parent Educators



## Student Work Feedback

Based on a custom criteria, have AI give areas of strength & areas for growth on...



## Text Proofreader

Take any text and have it proofread, correcting grammar, spelling, punctuatio...



## Standards Unpacker

Unpack any standard into component parts to understand what students need...



## Multiple Explanations

Generate clear explanations of concepts that you're teaching in class to help...



# AI Currently Used at Excel Academy



ChatGPT



MagicSchool



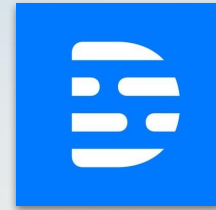
Scribe



Quizziz



Grammarly



Descript



Canva Magic Studio



WorkGPT  
WorkGPT for  
Workspace



# AI Resources for Staff

Name	Site Address	Description
TLDR	<a href="https://tldrthis.com/">https://tldrthis.com/</a>	An AI summarization tool that reduces long form text into concise, comprehensible summaries.
Khanmigo	<a href="https://www.khanacademy.org/khan-labs">https://www.khanacademy.org/khan-labs</a>	Khan Academy's AI Tutor
Gist AI	<a href="#">Web, YouTube, PDF w/ ChatGPT Gist Chrome Extension</a>	Gist AI summarizes documents, articles, webpages & videos into concise overviews using natural language processing and machine learning algorithms.
Perplexity Research Tool	<a href="https://www.perplexity.ai/">https://www.perplexity.ai/</a>	Answers questions, & provides summaries while citing and linking to its sources.
Consensus Research Tool	<a href="https://consensus.app/search/">https://consensus.app/search/</a>	Synthesizes expert perspectives from sources to provide users with a comprehensive, unbiased overview of complex topics.
Magic School AI	<a href="https://magicschool.ai/">https://magicschool.ai/</a>	Help lesson plan, differentiate, write assessments, write IEPs, communicate clearly, and more
Quizziz	<a href="https://quizziz.com">https://quizziz.com</a>	Use Quizziz AI to differentiate assignments, enhance questions, or create new quizzes directly from a webpage or YouTube video in one click
NEXTGEN Math	<a href="https://nextgenmath.com/">https://nextgenmath.com/</a>	Individual learning plans should outline specific goals, learning paths, and strategies tailored to the student's interests and academic needs.





# The Board's Role & AI

- Policies, procedures, and practices related to the mapping, measuring, and managing of AI risks are in place, transparent, and implemented effectively.
- Accountability structures ensure appropriate teams and individuals are empowered, responsible, and trained for mapping, measuring, and managing AI risks.
- Workforce diversity, equity, inclusion, and accessibility processes are prioritized in the mapping, measuring, and managing of AI risks.

---

**ARTIFICIAL INTELLIGENCE USE POLICY FOR STUDENTS**

Excel Academy Charter Schools and its programs (“EACS” or the “Charter School”) recognize the transformative potential of artificial intelligence (AI) in education. To ensure responsible and ethical use of AI tools by students, the following policy outlines the principles, permitted use, steps for ethical use, and consequences for violations.

**Guiding Principles:**

AI should be employed to support and enrich the learning experience, well-being, and enhance administrative functions while aligning with our core values. Excel Academy Charter Schools upholds the following principles for students:

1. **Transparency:** Students must comprehend both the capabilities and limitations of the tools they engage with.
2. **Academic Integrity:** AI should be used to support learning and the integrity of student work.
3. **Equity:** EACS is committed to utilizing AI technologies in a fair and impartiality among all users, and holds these standards.
4. **Accountability:** Students are responsible for their actions, including acknowledging the potential consequences that may ensue. This underpins a culture of responsible and ethical AI use with

**Permitted Use:**

1. **Educational Purposes Only:** AI tools may only be used for educational activities, such as research, learning enrichment, and skill development.
2. **Approved Platforms:** Students must use only approved AI platforms and tools provided by Excel Academy Charter Schools. EACS students should consult with their Teacher if they are unsure of appropriate platforms to use for specific educational activities.

**Steps to Ensure Ethical Use:**

Students at Excel Academy Charter Schools are encouraged to engage in critical thinking when utilizing AI tools, rigorously evaluating the validity and potential biases of the output and recommendations generated, as well as fact-checking AI-generated information with reliable sources. Ensuring data integrity is crucial, requiring that all data entered into AI systems is accurate, relevant, and obtained ethically. It is essential to uphold intellectual property rights and privacy regulations. It is essential that students obtain informed consent from individuals before utilizing AI tools that may collect, analyze, or process their personal data. Additionally, students are empowered to report any ethical concerns or issues related to the use of AI tools promptly to teachers or school administrators, fostering a culture of transparency and accountability within our educational community. It is essential for students to review and adhere to the school's academic honesty policies, including guidelines on the use of AI for research and assignments. Students should approach AI as aids rather than replacements for their own work and decision-making, being critical consumers of AI.

**Prohibited Use:**

1. Entering personal, sensitive, or confidential data into any AI system without proper authorization is strictly prohibited.
2. Using AI to complete assignments or assessments where it is not allowed or to plagiarize work is forbidden.
3. AI tools must not be used to impersonate individuals or organizations, in a misleading or malicious manner, or to generate content that is unlawful, harmful, or offensive.

# NEW AI Policy



- Support provided
- Permitted use
- Ensuring Ethical Use
- Prohibited Use
- Consequences for Violation

*Thank You!*

