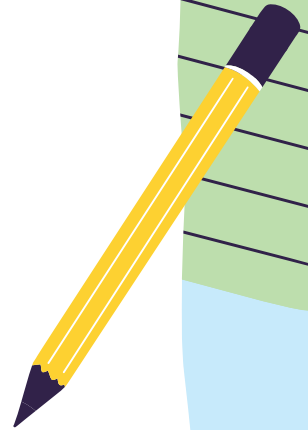


Intervention Department Update



Fall 2022

$$\sqrt{\frac{3}{4}} = (a^2)$$



What is new in Fall of '22?



MATH WIN Live

Live, small group math support
Grades 5/6 & 7
Virtual 35 mins 3 days/wk



MATH WIN ETL Classes

Excel teacher led core
math courses with
intervention embedded
Math 8 & Algebra 1



Dyslexia Screening

1. i-Ready Dyslexia Screener
2. TOSA led assessments
3. Action: Monitor, SST or SPED Referral



Care Solace

Connects families or staff
to therapy or residential
programs covered by
insurance or sliding scale.

NEW

MTSS TOSA

School Literacy

- Book Clubs
- Literary connections to Outdoor Classrooms
- Short Parent Training Videos (Writing and Early Reading Instruction)

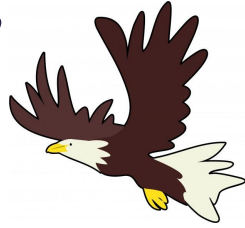
Intervention Groups

- Teaches 4 classes per week (Phonics, Comprehension, ELD x2)





Enrichment for Exceptional Eagles



- Similar to a GATE program
- Open to ALL students
- Field trip/hands-on experience followed with on-site lesson rich in depth and complexity
- Students research area of interest
- Follow-up virtual mtg to share
- Fosters connection and feeds curious minds
- Pilot Spring Semester

Coming Soon!



NEW is in **BLUE**

Reading

WIN Online Program
Phonics small groups
Comprehension small groups
Increased to 3x/wk
Dyslexia Screener

Math

WIN Online Program
Math 5/6 small group
Math 7 small group
ETL WIN Core Classes
(Math 8 & Alg. 1)

Mental Wellbeing

K-12 SEL lessons
School Counseling
Crisis Team
Care Solace

ELD

Online personalized lessons
Live small group instruction-
Increased to 3x/wk
Now required

So *thankful*
for this team!

Intervention TEAM



April Saade
Assistant Director
of Intervention



Tamara Murphy
Intervention
Coordinator



Sarah Horikawa
MTSS TOSA



Debbie Rouintree
Paraprofessional

Intervention Teachers:

Sarah Horikawa
Jessica Cheever
Mandy Mashburn (GATE)

Sarah Bobar
Marina Parker