



Medical Lake School District

Medical Lake School District #326, WA

Regular Board Meeting

Date and Time

Tuesday March 25, 2025 at 6:00 PM PDT

Location

Hallett Elementary Library

Agenda

	Purpose	Presenter	Time
I. Opening Items			6:00 PM
A. Record Attendance			1 m
B. Call the Meeting to Order			
C. Pledge of Allegiance			1 m
D. Approve Agenda	Vote		1 m
E. What's Right	Discuss		15 m

Administrators, Board and Guests Comment on Something Positive They've Seen in the District and Community ~ Anyone attending the meeting will be given the opportunity to share something positive following the Board's comments

Hallett Elementary Trout Release Project

4th grade students will present about their trout release project.

Purpose Presenter Time

Mrs. Hickman's class

- Scarlet Cox
- Nova Meyers

Mrs. Bolin's class

- CJ Pierce
- Kari Long

Ms. Spilker's class

- Elin Wortman
- Maya Krus

II. Consent Agenda

6:18 PM

A. Minutes from Regular Board Meeting 2/25/2025 Approve Minutes 1 m

B. Approve the Consent Agenda Vote

- Personnel (Certificated and Classified)
 - Resignations
 - Leaves
 - Staff Contracts
- Staff Travel
- Board Member Compensation
- Fiscal Vouchers
 - General Fund (Payroll and Accounts Payable)
 - A.S.B. Fund
 - Capital Projects
- Financial Report
- Enrollment

III. Public Comments on Individual Action Items

Anyone wishing to speak to a specific individual action item, board policy or other, listed below will be given the opportunity here, prior to action being taken by the Board.

Purpose Presenter Time

IV. Individual Actions Items **6:19 PM**

A. Board Policies ~ None at this time

B. Approve the 2025/2026 School Year Calendar Vote 5 m

We postponed the approving the 2025/2026 school year calendar to allow for more feedback from the board and parents.

We shared out the winning calendar, calendar C and created a D Draft that begins before Labor Day but instead of a full week in February, adds a day off before Veteran's Day, an additional 3 day weekend at High School second semester, and a 5 day weekend in February.

- Calendar C begins before Labor Day, includes a mid-winter break in February, and gets out June 16.
- Calendar D begins before Labor Day adds a day off before Veteran's Day, adds a day off at High School second semester, adds 2 additional days off around President's Day in February

Our first vote had a record amount of staff participate, 129 voters, with 65.9% voting for calendar C.

Second vote had 137 staff participate with 44.5% percent voting for Calendar D.

I asked for parent/community input and received the following responses:

- Re: Option C ~ As the parent of two dyslexic students who are always worn out from working twice as hard, I support draft C of the calendar. These kids NEED a break between January and April. The February break would help the school year not feel so miserable for them.
- Option C looks great! Less school in the winter and being able to take a vacation sounds nice!
- My concern with Draft C is that the more concentrated blocks of time off make it more difficult to find childcare. When the days are dispersed more widely, it is easier to coordinate work schedules with childcare.
- Good morning and thank you for allowing us the opportunity to add our inputs to the 2025-26 school year calendar. As a family that choices in from nine mile falls due to military obligations, I feel that option C would be harder to obtain after school care. Thank you

	Purpose	Presenter	Time
	We recommend the School Board approve Calendar D as the 2025/2026 school year calendar.		
C.	Approve the Annual Drug Free Workplace Notice of Compliance	Vote	1 m
D.	Approval for 8th Grade Girls to Play on the High School Softball Team	Vote	1 m
	Our softball program retired long time coaches, John Higgins, and Cam Preston at the end of last season. Ivanna Lomas is stepping up from varsity assistant to head coach. Nick Puzycki is joining as varsity assistant coach, and Halle Barsness from the MS is the new JV coach.		
	We currently have 18 registered in FinalForms. Last year we had 23, and 22 the year before that.		
	We have 4 eighth grade girls interested in joining. This would allow us to field a JV team to play after varsity games. Without them, we'll potentially have to cancel games due to lack of players with eligible innings.		
E.	Approve the Surplus of Old Cheer and Wrestling Outfits ~ High School	Vote	1 m
	13 uniform tops with yellow cardinals. 2 were last used for the 2024 lilac parade. The yellow cardinals will be given to the 7 seniors at the March 20 banquet.		
	27 wrestling warm up tops and 7 warm up bottoms. Surplus will be given to the wrestlers.		
V.	Student Representatives Report		6:27 PM
A.	Ashley ~ Michael Anderson Elementary School; Trinity ~ Middle School; Chuks ~ High School; Gabby ~ Hallett Elementary	Discuss	10 m
VI.	Reports and Discussions		6:37 PM
A.	Spring Sports Report ~ Dawn Eliassen	Discuss	5 m

	Purpose	Presenter	Time	
<p>MS has offered cheerleading all year long with Amy Chicoine as the advisor. There are 12- 15 participants who cheer at home games and last week they did a half time performance. Cheer is classified as a club activity.</p>				
<p>Esports is officially up and running for the spring season and it is also classified as a club activity. Glen Yamane and Chad Powers are the advisors and there are 15 students who compete in this activity.</p>				
<p>Both activities require students to sign a contract regarding behavior and academic requirements.</p>				
B.	Asset Preservation Program Discussion	Discuss	Chad Moss	10 m
C.	Enrollment Projections, Impact Aid Report and Budget Plan Report ~ Chad Moss	Discuss		15 m

Enrollment Projections:

Impact Aid:

From Washington State Impact Aid Association (WSIAA), at this point, the ***staff in Impact Aid Office staff have not been terminated.***

Budget Plan:

VII. Board Reports and Discussion

VIII. Superintendent's Report

7:07 PM

A.	Assistant Principal Week ~ April 7-11, 2025	Discuss		2 m
B.	Green Gate Lane Development	Discuss		2 m

IX. Communications with Staff, Guests, and District Residents

Anyone wishing to speak to something other than a "What's Right" or an "Individual Action Item" will be given the opportunity to speak. Public comment period is not a time for dialogue between the board and the public. The board will not respond to the public. The board will not respond to statements, questions, or challenges made during public comment period and there will be no back-and-forth dialogue. Please know that the board's

Purpose

Presenter

Time

silence is neutral. It is neither a signal of agreement nor disagreement with the speaker's remarks.

X. Executive Session ~ None at this time

XI. Closing Items

A. Adjourn Meeting

FYI

Coversheet

Minutes from Regular Board Meeting 2/25/2025

Section: II. Consent Agenda
Item: A. Minutes from Regular Board Meeting 2/25/2025
Purpose: Approve Minutes
Submitted by:
Related Material: Minutes for Regular Board Meeting on February 25, 2025

APPROVED



Medical Lake
School District

Medical Lake School District #326, WA

Minutes

Regular Board Meeting

Date and Time

Tuesday February 25, 2025 at 6:00 PM

Location

Middle School Library

Directors Present

Alexis Alexander, Gerri Johnson, Laura Parsons, Ron Cooper, Sarra Reiber, Wendy Williams-Gilbert

Directors Absent

None

Guests Present

Chad Moss, Kimberly Headrick, Robert Haugen

I. Opening Items

A. Record Attendance

B. Call the Meeting to Order

Wendy Williams-Gilbert called a meeting of the board of directors of Medical Lake School District #326, WA to order on Tuesday Feb 25, 2025 at 6:00 PM.

C. Pledge of Allegiance

D.

Approve Agenda ~ With Noted Change

Laura Parsons made a motion to approve.
Alexis Alexander seconded the motion.
The board **VOTED** unanimously to approve the motion.

E. What's Right

II. Consent Agenda

A. Minutes from Regular Board Meeting 1/28/2025

Laura Parsons made a motion to approve the minutes from Regular Board Meeting on 01-28-25.
Alexis Alexander seconded the motion.
The board **VOTED** unanimously to approve the motion.

B. Approve the Consent Agenda

Laura Parsons made a motion to approve.
Alexis Alexander seconded the motion.

Resignations - *Garrett Grau ~ Assistant Maintenance Supervisor, District (effective 3/12/2025); Kyle Walker ~ PE Teacher, Michael Anderson and Hallett Elementary (effective 6/11/2025); Claudia Michel ~ Cafeteria, Michael Anderson Elementary (effective 3/7/2025);*

Leaves - *None at this time*

Staff Contracts:

Administrative Staff - *Roll-Over the Superintendent's Contract; Jeremy Vincent ~ Principal, Medical Lake High School (effective 7/1/2025);*

Certificated Staff - *Jill Young ~ Board Certified Behavior Analyst (BCBA), District (effective 3/3/2025);*

Certificated Substitutes - *None at this time*

Long-term Substitutes - *None at this time*

Classified Staff - *Julia Burkett ~ General Para, Hallett Elementary (reminder of the 2024/2025 school year, effective 2/24/2025); Catherine Sweet ~ TK-General Para, Michael Anderson Elementary (effective 2/18/2025); Debbie Jones ~ Assignment Change from 67AP Bus Aide to T17McV Driver, Transportation (effective 1/14/2025);*

Classified Substitutes - *None at this time*

Extra Curricular Activities - *None at this time*

Other - *None at this time*

Teachers Teaching Out of Content Areas: *None at this time*

Staff Travel: *None at this time*

Board Member Compensation: *Ron Cooper (11/9/2024 - 2/20/2025);*

Financials The following vouchers/warrants as audited and certified by the auditing officer, as required by RCW 42.24.080, and those expense reimbursement claims certified, as required by RCW 42.24.090, were approved for payment.

General Fund (Payroll) for January 31, 2025, warrants 136616 - 136621 in the amount of \$12,344.68;

General Fund (Payroll/Accounts Payable) for January 31, 2025, warrants 136622 - 136639 in the amount of \$683,178.20;

General Fund (Accounts Payable) for January 31, 2025, warrants 136640 - 136681 in the amount of \$221,521.65;

Capital Fund (Accounts Payable) for January 31, 2025, warrants 136682 - 136682 in the amount of \$53,219.43;

ASB Fund (Accounts Payable) for January 31, 2025, warrants 136683 - 136686 in the amount of \$5,252.25;

General Fund (Accounts Payable) for February 14, 2025, warrants 136687 - 136735 in the amount of \$220,986.25;

ASB Fund (Accounts Payable) for February 14, 2025, warrants 136736 - 136741 in the amount of \$18,959.19;

The board **VOTED** unanimously to approve the motion.

III. Individual Actions Items

A. Board Policy 4280 ~ Research Activity; Second Reading

Laura Parsons made a motion to approve.

Alexis Alexander seconded the motion.

The board **VOTED** unanimously to approve the motion.

B. Approve the Parent Partnership Curriculum

Laura Parsons made a motion to approve.

Alexis Alexander seconded the motion.

The board **VOTED** unanimously to approve the motion.

C. Approve the Surplus of Outdated Professional Development Literature from the District

Laura Parsons made a motion to approve.

Alexis Alexander seconded the motion.

The board **VOTED** unanimously to approve the motion.

IV. Student Representatives Report

A. Ashley ~ Visited the Middle School; Trinity ~ Visited the High School; Chuks ~ Visited Hallett Elementary; Gabby ~ Visited Michael Anderson Elementary

The Student Reps were given the opportunity to ask their own questions this month.

Gabby, who visited Michael Anderson Elementary, asked 2nd, 4th and 5th graders what are some highlights of their year, what they're excited for next year and what are their favorite things to do now. They like getting to play number games in the classroom, learning about nature, hands-on science and music. They're excited to meet and make new friends and having new teachers. Right now, their favorite things to do are drawing and reading.

Gabby also noted that Assistant Superintendent, Mr. Moss really likes the District's transport vans and how well they drive. Everyone in attendance thought that was great!

Gabby spoke to Chuk's visit to Hallett Elementary where he talked with students in 3rd and 5th grades. In 3rd grade, he talked about ways to solve conflicts with classmates and good ways to resolve them. When 5th graders were asked how they feel kids respect each other, they said some are not showing respect for others. Chuks and the students talked about modeling good behavior and leading by example.

Ashley went to the Middle School, asking all grades how things are going and what they feel are issues. 8th grade felt classes were going well, with just a few students not respecting each other. They're looking forward to basketball and the band festival. 7th graders say things are going great in class and with teachers. 6th graders like having more afterschool activities especially compared to being at the elementary, and feel they're doing well in class.

All grades say the bathrooms could use some help with doors being broken, no mirrors and occasional conflicts that take place there.

Ashley commented on Trinity's visit to the High School. Everyone is excited for spring sports. Academically, they say things are going well with projects and daily assignments. Students are happy with their grades and feel they have the resources to work well with teachers and peers. They'd like to see a longer lunch and independent seniors feel they

don't have quite enough access to counselors to help them with things related to post-secondary work and school.

V. Reports and Discussions

A. Transportation Services Report

Medical Lake School District Transportation Director, Tonya Jaynes was excited about the new BusRight feature we have on all our fleet. BusRight is routing software with live GPS. When we had the issue in town with the railroad track roadblock, Tonya was able to reroute drivers to assist with pick up students on the bus affected by the roadblock and do it in real time. Sub drivers will be able to hear turn-by-turn instructions and bus stops using iPads in the bus they're assigned to. September 2025 we should be able to roll out a parent app which will allow parents to see where their student's bus is in real time. This should make it easier for parents waiting for the bus to arrive in the mornings for pick-up and where the bus is in the evening for drop-off. Add some piece of mind.

Valley Wide was awarded our diesel bid in 2023/2024 and our propane bid in 2024/2025. The savings have been 3-5 % for diesel and 15-20% for propane. Their tanks send an automatic alert to the company when the volume is getting low so we're not having to do larger fill-ups every time like we did when we were having to monitor them manually.

There are currently two, 77 passenger, diesel buses on order, scheduled for February/March delivery. We went with Bryson, which is BlueBird over the International since their bids came in almost \$16,000 less per bus.

Thanks to our mechanics, all our fleet, which includes bus and passenger vehicles passes WSP inspections every year. We pass the scheduled summer inspection, which is 100% of our fleet and the surprise winter inspection where they pull 25% of our fleet and check them, and we pass with flying colors!

Ridership is down a little bit but some of that is from afterschool activities, and we're not allowed to count those kiddos on our ridership report.

Transportation has 18 contracted drivers, 5 subs, 4 special needs aides, 2 support aides, 1 driver trainer, 1 shop foreman and 1 assistant tech.

Our transportation department is always looking for sub bus drivers, the next driver training is March 6. If you're interested, please contact Tonya Jaynes ~ tjaynes@mlsd.org.

B. Assessments Report

Assistant Superintendent of Teaching and Learning Rob Haugen briefly spoke to the information included in the original document in the board packet and what the data is comparing. Mr. Haugen's main focus were the School Improvement Plan (SIP) and Student Celebrations for each building. Moving forward, building principals have been asked to highlight a student in their school that has made great strides towards improvement and what those improvements were. Parents were contacted for permission prior to their student being highlighted on the agenda.

Rob mentioned what SIP goal the school was improving on, and how and where the highlighted student had improved.

C. Threat Assessment Protocol

Director of Student and Community Services, Tawni Barlow explained what it means when a school does a Threat Assessment. It's something that may sound scary, but it's really preventative measures. Tawni shared what sort of behaviors or actions would cause a school building to initiate an assessment, the levels within each of the 2 main steps that take place, and the team involved in the entire process.

VI. Superintendent's Report

A. Education Support Professionals Week and School Retiree Week

Dr. Headrick read the proclamation for Education Support Professionals Week (formerly classified week) which is celebrated March 10-14, 2025 and School Retirees Week, March 17-23, 2025.

B. Approve the 2025/2026 School Year Calendar ~ Moving to Discussion Rather Than Action

As noted in the agenda change, the 2025/2026 school year calendar was moved to discussions rather than voting given the significant change in the calendar that was voted most popular.

We had 3 calendars that were voted on by school staff. There were a record amount of voters this year, almost triple what we've had in the past. Draft A begins before Labor Day and gets out the middle of June. Draft B begins after Labor Day, which we haven't done in a very long time, and gets out the 3rd week of June. Draft C, which received almost 66% of the vote, begins before Labor Day but incorporates a mid-winter break in February and gets out the middle of June. It was discussed at a parent connections meeting Monday, and everyone there seemed good with the change. Central Valley, West Valley, East Valley and Freeman have a mid-winter break and SPS is looking at that for their 26/27 school year. Dr. Headrick felt it is worth a bigger discussion with all parents within the district through ParentSquare and bi-weekly updates. The 2025/2026 school year calendar will be voted in by the School Board at the March meeting instead.

C. Mid-Year Review of the Medical Lake School Board Principals

Dr. Headrick reviewed the Board and Superintendent goals that were approved at the October Board Meeting saying that they will continue to work towards the 4 goals. She encouraged the Board to attend her weekly standing Walk & Talks at each building and the monthly Meet & Greets at Roam and Thomas Hammer on base.

VII. Communications with Staff, Guests, and District Residents

A.

Community members wishing to address concerns were moved to follow what's right rather than following the Superintendent's Report.

Randy Moffatt ~ principal hiring

Kadeem Smalls ~ student concern

Brett Ward ~ principal hiring

Jennifer Speirs ~ what's right

Dallas Gilbert ~ principal hiring

Jerry Ornelas ~ principal hiring

VIII. Closing Items

A. Adjourn Meeting

There being no further business to be transacted, and upon motion duly made, seconded and approved, the meeting was adjourned at 7:35 PM.

Respectfully Submitted,
Wendy Williams-Gilbert

Coversheet

Approve the Consent Agenda

Section: II. Consent Agenda
Item: B. Approve the Consent Agenda
Purpose: Vote
Submitted by:
Related Material: 3.25.2025 Consent Agenda.pdf
Financials.pdf
March Enrollment.pdf

3.25.2025 ~ Consent Agenda

Resignations - *Darci Mock ~ Athletic Secretary/Bookkeeper, High School (effective 4/7/2025);*

Leaves - *None at this time*

Staff Contracts:

Administrative Staff - *None at this time*

Certificated Staff - *None at this time*

Certificated Substitutes - *None at this time*

Long-term Substitutes - *None at this time*

Classified Staff - *Doug McDowell ~ Assignment Change from Nutrition Services Inventory to Assistant Cook at Michael Anderson Elementary (effective 3/10/2025); Amy Chicoine ~ Assistant Secretary/Attendance, Middle School (effective 8/20/2025); Jefferson French ~ Lead Custodian, Michael Anderson Elementary (effective 3/1/2025); Aidan Niblock ~ Seasonal Regular Custodian, 4 hours Middle School/4 hours High School (effective 3/1/2025 - 8/31/2025); Thomas Collins ~ Regular Custodian/Maintenance, High School (effective 3/1/2025); Jacob Beitinger ~ Regular Custodian/Grounds Maintenance, District (effective 3/1/2025); Melody Haynes ~ Bus Aide Assignment Change, Removing 2.08 Hours Per Day from Midday Route 30PA, Transportation (effective 3/6/2025); Camilla Orgeta ~ Bus Aide Assignment Change, Adding 2.08 Hours Per Day with Midday Route 30PA, Transportation (effective 3/10/2025); Mark Behl ~ Assistant Maintenance Supervisor, District (effective 3/10/25);*

Classified Substitutes - *None at this time*

Extra Curricular Activities - *Dave Boyd ~ Head Baseball Coach, Middle School (effective spring 2025 season); Halle Barsness ~ Assistant Softball Coach, High School (effective March - May 2025); Steve Bahme ~ Assistant Track Coach (Throwing & Jumping), High School (effective spring 2025); Kailey Crockett ~ Girls Tennis Coach, High School (effective spring 2025);*

WIAA Required Approval of Volunteer Coaches

Volunteer Name	MS	HS	Sport
Joe Oliver		X	Football
Nancy Black		X	X-Country
Nick Henry		X	X-Country
Jeremiah Windle		X	X-Country
Landon Hall		X	Boys Basketball
Robert Henderson	X	X	Girls Basketball
Desiree Heineman		X	Wrestling
Alex Gonzalez		X	Wrestling
Fred Wagner		X	Baseball
Sarah Collins		X	Track
Jeremiah Windle		X	Track
Brent Griffis		X	Golf
Jacob Bowman	X		Wrestling
Cassidy Fitzpatrick	X		Boys Basketball
Danielle Hodgson	X		Softball
Shannon Marston	X		Girls Basketball
Rey Ornelas	X		Volleyball

Other - *None at this time*

Teachers Teaching Out of Content Areas: *None at this time*

Staff Travel: *None at this time*

Board Member Compensation: *Laura Parsons (12/3/2024 - 3/17/2025);*

FinancialsThe following vouchers/warrants as audited and certified by the auditing officer, as required by RCW 42.24.080, and those expense reimbursement claims certified, as required by RCW 42.24.090, were approved for payment.

General Fund (Payroll) for February 28, 2025, warrants 136742 - 136747 in the amount of \$7,777.77;

General Fund (Payroll/Accounts Payable) for February 28, 2025, 136748 - 136765 in the amount of \$707,978.63;

General Fund (Accounts Payable) for February 28, 2025, warrants 136766 - 136810 in the amount of \$126,740.44;

ASB Fund (Accounts Payable) for February 28, 2025, warrants 136811 - 136815 in the amount of \$11,398.81;

General Fund (Accounts Payable) March 14, 2025, warrants 136816 - 136878 in the amount of \$298,451.52;

ASB Fund (Accounts Payable) for March 14, 2025, warrants 136879 - 136881 in the amount of \$23,253.55;

10--General Fund-- FUND BALANCE -- AGENCY ACCOUNTS -- Revised -- BUDGET-STATUS-REPORT
Fiscal Year 2024 (September 1, 2024 - August 31, 2025)

For the Medical Lake School District School District for the Month of February, 2025

	ANNUAL BUDGET	ACTUAL FOR MONTH	ACTUAL FOR YEAR	ENCUMBRANCES	BALANCE	PERCENT
<u>A. REVENUES/OTHER FIN. SOURCES</u>						
1000 LOCAL TAXES	1,805,624	6,649.29	687,920.42		1,117,703.58	38.10
2000 LOCAL SUPPORT NONTAX	314,581	20,627.81	258,358.85		56,222.15	82.13
3000 STATE, GENERAL PURPOSE	19,257,084	1,577,956.00	8,985,977.50		10,271,106.50	46.66
4000 STATE, SPECIAL PURPOSE	5,230,066	501,032.60	2,855,516.84		2,374,549.16	54.60
5000 FEDERAL, GENERAL PURPOSE	2,740,283	.00	1,426,634.00		1,313,649.00	52.06
6000 FEDERAL, SPECIAL PURPOSE	2,087,362	79,641.25	671,517.65		1,415,844.35	32.17
7000 REVENUES FR OTH SCH DIST	0	.00	.00		.00	0.00
8000 OTHER AGENCIES AND ASSOCIATES	65,000	.00	.00		65,000.00	0.00
9000 OTHER FINANCING SOURCES	0	684.60	4,177.36		4,177.36-	0.00
<u>Total REVENUES/OTHER FIN. SOURCES</u>	31,500,000	2,186,591.55	14,890,102.62		16,609,897.38	47.27
<u>B. EXPENDITURES</u>						
00 Regular Instruction	17,316,228	1,291,367.29	7,997,264.18	327,119.69	8,991,844.13	48.07
10 Federal Stimulus	0	.00	.00	0.00	.00	0.00
20 Special Ed Instruction	4,096,558	376,013.95	2,387,754.07	228,822.32	1,479,981.61	63.87
30 Voc. Ed Instruction	1,174,564	96,010.81	560,706.16	728.11	613,129.73	47.80
40 Skills Center Instruction	0	.00	.00	0.00	.00	0.00
50+60 Compensatory Ed Instruct.	1,196,862	96,080.97	562,985.67	0.00	633,876.33	47.04
70 Other Instructional Pgms	353,588	11,387.00	110,540.68	0.00	243,047.32	31.26
80 Community Services	333,161	31,961.68	190,991.58	0.00	142,169.42	57.33
90 Support Services	7,829,039	627,218.63	3,993,179.93	927,046.64	2,908,812.43	62.85
<u>Total EXPENDITURES</u>	32,300,000	2,530,040.33	15,803,422.27	1,483,716.76	15,012,860.97	53.52
C. <u>OTHER FIN. USES TRANS. OUT (GL 536)</u>	0	.00	.00			
D. <u>OTHER FINANCING USES (GL 535)</u>	0	.00	.00			
E. <u>EXCESS OF REVENUES/OTHER FIN.SOURCES OVER (UNDER) EXP/OTH FIN USES (A-B-C-D)</u>	800,000-	343,448.78-	913,319.65-		113,319.65-	14.16
F. <u>TOTAL BEGINNING FUND BALANCE</u>	4,000,000		4,268,002.53			
G. <u>GLS 896, 897, 898 ACCOUNTING CHANGES AND ERROR CORRECTIONS (+OR-)</u>	XXXXXXXXXX		.00			
H. <u>TOTAL ENDING FUND BALANCE (E+F + OR - G)</u>	3,200,000		3,354,682.88			

I. ENDING FUND BALANCE ACCOUNTS:

G/L 810 Restricted For Other Items	0	.00
G/L 815 Restrict Unequalized Deduct Rev	0	.00
G/L 821 Restrictd for Carryover	0	.00
G/L 823 Restricted for Carryover of Tra	0	.00
G/L 825 Restricted for Skills Center	0	.00
G/L 828 Restricted for C/O of FS Rev	0	.00
G/L 830 Restricted for Debt Service	0	.00
G/L 835 Restrictd For Arbitrage Rebate	0	.00
G/L 840 Nonspnd FB - Invent/Prepd Itms	100,000	51,196.00
G/L 845 Restricted for Self-Insurance	0	.00
G/L 850 Restricted for Uninsured Risks	0	.00
G/L 870 Committed to Other Purposes	0	.00
G/L 872 Committd to Econmc Stabilizatn	0	.00
G/L 873 Committed to Depreciation Sub-F	0	.00
G/L 875 Assigned Contingencies	0	.00
G/L 884 Assigned to Other Cap Projects	0	.00
G/L 888 Assigned to Other Purposes	0	.00
G/L 890 Unassigned Fund Balance	3,100,000	3,303,486.88
G/L 891 Unassigned Min Fnd Bal Policy	0	.00
<u>TOTAL</u>	3,200,000	3,354,682.88

20--Capital Projects-- FUND BALANCE -- AGENCY ACCOUNTS -- Revised -- BUDGET-STATUS-REPORT
Fiscal Year 2024 (September 1, 2024 - August 31, 2025)

For the Medical Lake School District School District for the Month of February, 2025

	ANNUAL BUDGET	ACTUAL FOR MONTH	ACTUAL FOR YEAR	ENCUMBRANCES	BALANCE	PERCENT
A. REVENUES/OTHER FIN. SOURCES						
1000 Local Taxes	449,173	1,298.71	131,449.50		317,723.50	29.26
2000 Local Support Nontax	3,000	908.70	6,963.23		3,963.23-	232.11
3000 State, General Purpose	0	.00	.00		.00	0.00
4000 State, Special Purpose	0	.00	.00		.00	0.00
5000 Federal, General Purpose	0	.00	.00		.00	0.00
6000 Federal, Special Purpose	0	.00	.00		.00	0.00
7000 Revenues Fr Oth Sch Dist	0	.00	.00		.00	0.00
8000 Other Agencies and Associates	0	.00	.00		.00	0.00
9000 Other Financing Sources	0	.00	.00		.00	0.00
Total REVENUES/OTHER FIN. SOURCES	452,173	2,207.41	138,412.73		313,760.27	30.61
B. EXPENDITURES						
10 Sites	447,173	.00	.00	0.00	447,173.00	0.00
20 Buildings	200,000	.00	384,362.09	47,149.15	231,511.24-	215.76
30 Equipment	0	.00	.00	0.00	.00	0.00
40 Energy	0	.00	.00	0.00	.00	0.00
50 Sales & Lease Expenditure	0	.00	.00	0.00	.00	0.00
60 Bond Issuance Expenditure	0	.00	.00	0.00	.00	0.00
90 Debt	0	.00	.00	0.00	.00	0.00
Total EXPENDITURES	647,173	.00	384,362.09	47,149.15	215,661.76	66.68
C. <u>OTHER FIN. USES TRANS. OUT (GL 536)</u>	0	684.60	4,177.36			
D. <u>OTHER FINANCING USES (GL 535)</u>	0	.00	.00			
E. <u>EXCESS OF REVENUES/OTHER FIN.SOURCES OVER(UNDER) EXP/OTH FIN USES (A-B-C-D)</u>	195,000-	1,522.81	250,126.72-		55,126.72-	28.27
F. <u>TOTAL BEGINNING FUND BALANCE</u>	200,000		241,917.55			
G. <u>GLS 896, 897, 898 ACCOUNTING CHANGES AND ERROR CORRECTIONS (+OR-)</u>	XXXXXXXXX		.00			
H. <u>TOTAL ENDING FUND BALANCE (E+F + OR - G)</u>	5,000		8,209.17-			

I. ENDING FUND BALANCE ACCOUNTS:

G/L 810 Restricted For Other Items	0	.00
G/L 825 Restricted for Skills Center	0	.00
G/L 830 Restricted for Debt Service	0	.00
G/L 835 Restrictd For Arbitrage Rebate	0	.00
G/L 840 Nonspnd FB - Invent/Prepd Itms	0	.00
G/L 850 Restricted for Uninsured Risks	0	.00
G/L 861 Restricted from Bond Proceeds	0	.00
G/L 862 Committed from Levy Proceeds	0	38,024.81
G/L 863 Restricted from State Proceeds	0	.00
G/L 864 Restricted from Fed Proceeds	0	.00
G/L 865 Restricted from Other Proceeds	647,173-	384,362.09-
G/L 866 Restricted Impact Fees	0	.00
G/L 867 Restrictd Mitigation Fees	0	.00
G/L 869 Restricted fr Undistr Proceeds	0	.00
G/L 870 Committed to Other Purposes	0	.00
G/L 889 Assigned to Fund Purposes	652,173	338,128.11
G/L 890 Unassigned Fund Balance	0	.00
<u>TOTAL</u>	5,000	8,209.17-

30--Debt Service Fund-- FUND BALANCE -- AGENCY ACCOUNTS -- Revised -- BUDGET-STATUS-REPORT
Fiscal Year 2024 (September 1, 2024 - August 31, 2025)

For the Medical Lake School District School District for the Month of February, 2025

	ANNUAL BUDGET	ACTUAL FOR MONTH	ACTUAL FOR YEAR	ENCUMBRANCES	BALANCE	PERCENT
A. REVENUES/OTHER FIN. SOURCES						
1000 Local Taxes	1,528,730	6,082.99	633,267.36		895,462.64	41.42
2000 Local Support Nontax	12,270	1,091.55	14,768.76		2,498.76-	120.36
3000 State, General Purpose	0	.00	.00		.00	0.00
5000 Federal, General Purpose	0	.00	.00		.00	0.00
9000 Other Financing Sources	0	.00	.00		.00	0.00
<u>Total REVENUES/OTHER FIN. SOURCES</u>	1,541,000	7,174.54	648,036.12		892,963.88	42.05
B. EXPENDITURES						
Matured Bond Expenditures	1,255,000	.00	1,255,000.00	0.00	.00	100.00
Interest On Bonds	261,000	.00	143,100.00	0.00	117,900.00	54.83
Interfund Loan Interest	0	.00	.00	0.00	.00	0.00
Bond Transfer Fees	25,000	.00	.00	0.00	25,000.00	0.00
Arbitrage Rebate	0	.00	.00	0.00	.00	0.00
Underwriter's Fees	0	.00	.00	0.00	.00	0.00
<u>Total EXPENDITURES</u>	1,541,000	.00	1,398,100.00	0.00	142,900.00	90.73
C. OTHER FIN. USES TRANS. OUT (GL 536)						
	0	.00	.00			
D. OTHER FINANCING USES (GL 535)						
	0	.00	.00			
E. EXCESS OF REVENUES/OTHER FIN.SOURCES OVER(UNDER) EXPENDITURES (A-B-C-D)						
	0	7,174.54	750,063.88-		750,063.88-	0.00
F. TOTAL BEGINNING FUND BALANCE						
	1,051,000		1,174,295.93			
G. GLS 896, 897, 898 ACCOUNTING CHANGES AND ERROR CORRECTIONS (+OR-)						
			.00			
H. TOTAL ENDING FUND BALANCE (E+F + OR - G)						
	1,051,000		424,232.05			
I. ENDING FUND BALANCE ACCOUNTS:						
G/L 810 Restricted for Other Items	0		.00			
G/L 830 Restricted for Debt Service	1,051,000		424,232.05			
G/L 835 Restrictd For Arbitrage Rebate	0		.00			
G/L 870 Committed to Other Purposes	0		.00			
G/L 889 Assigned to Fund Purposes	0		.00			
G/L 890 Unassigned Fund Balance	0		.00			
<u>TOTAL</u>	1,051,000		424,232.05			

40--Associated Student Body Fund-- FUND BALANCE -- AGENCY ACCOUNTS -- Revised -- BUDGET-STATUS-REPORT
Fiscal Year 2024 (September 1, 2024 - August 31, 2025)

For the Medical Lake School District School District for the Month of February, 2025

	ANNUAL BUDGET	ACTUAL FOR MONTH	ACTUAL FOR YEAR	ENCUMBRANCES	BALANCE	PERCENT
A. REVENUES						
1000 General Student Body	191,250	1,776.26	65,838.85		125,411.15	34.43
2000 Athletics	152,710	10,794.00	95,309.25		57,400.75	62.41
3000 Classes	11,500	.00	822.00		10,678.00	7.15
4000 Clubs	77,000	2,948.98	40,639.70		36,360.30	52.78
6000 Private Moneys	10,350	370.00	740.00		9,610.00	7.15
<u>Total REVENUES</u>	442,810	15,889.24	203,349.80		239,460.20	45.92
B. EXPENDITURES						
1000 General Student Body	230,700	10,709.25	38,973.93	9,382.37	182,343.70	20.96
2000 Athletics	146,930	10,176.59	77,976.06	22,831.39	46,122.55	68.61
3000 Classes	9,630	269.07	781.80	0.00	8,848.20	8.12
4000 Clubs	69,950	9,165.10	36,348.10	2,881.19	30,720.71	56.08
6000 Private Moneys	10,611	37.99	2,965.98	0.00	7,645.02	27.95
<u>Total EXPENDITURES</u>	467,821	30,358.00	157,045.87	35,094.95	275,680.18	41.07
C. EXCESS OF REVENUES OVER (UNDER) EXPENDITURES (A-B)						
	25,011-	14,468.76-	46,303.93		71,314.93	285.13-
D. TOTAL BEGINNING FUND BALANCE						
	225,000		255,079.04			
E. GLS 896, 897, 898 ACCOUNTING CHANGES AND ERROR CORRECTIONS (+OR-)						
	XXXXXXXXXX		.00			
F. TOTAL ENDING FUND BALANCE (C+D + OR - E)						
	199,989		301,382.97			
G. ENDING FUND BALANCE ACCOUNTS:						
G/L 810 Restricted for Other Items	0		.00			
G/L 819 Restricted for Fund Purposes	199,989		301,382.97			
G/L 840 Nonspnd FB - Invent/Prepd Itms	0		.00			
G/L 850 Restricted for Uninsured Risks	0		.00			
G/L 870 Committed to Other Purposes	0		.00			
G/L 889 Assigned to Fund Purposes	0		.00			
G/L 890 Unassigned Fund Balance	0		.00			
<u>TOTAL</u>	199,989		301,382.97			

90--Transportation Vehicle Fund-- FUND BALANCE -- AGENCY ACCOUNTS -- Revised -- BUDGET-STATUS-REPORT
Fiscal Year 2024 (September 1, 2024 - August 31, 2025)

For the Medical Lake School District School District for the Month of February, 2025

<u>A. REVENUES/OTHER FIN. SOURCES</u>	<u>ANNUAL BUDGET</u>	<u>ACTUAL FOR MONTH</u>	<u>ACTUAL FOR YEAR</u>	<u>ENCUMBRANCES</u>	<u>BALANCE</u>	<u>PERCENT</u>
1000 Local Taxes	0	.00	.00		.00	0.00
2000 Local Nontax	2,000	1,166.24	7,261.03		5,261.03-	363.05
3000 State, General Purpose	0	.00	.00		.00	0.00
4000 State, Special Purpose	242,000	.00	.00		242,000.00	0.00
5000 Federal, General Purpose	0	.00	.00		.00	0.00
6000 Federal, Special Purpose	0	.00	.00		.00	0.00
8000 Other Agencies and Associates	0	.00	.00		.00	0.00
9000 Other Financing Sources	0	.00	.00		.00	0.00
<u>A. TOTAL REV/OTHER FIN.SRCS (LESS TRANS)</u>	<u>244,000</u>	<u>1,166.24</u>	<u>7,261.03</u>		<u>236,738.97</u>	<u>2.98</u>
<u>B. 9900 TRANSFERS IN FROM GF</u>	<u>0</u>	<u>.00</u>	<u>.00</u>		<u>.00</u>	<u>0.00</u>
<u>C. Total REV./OTHER FIN. SOURCES</u>	<u>244,000</u>	<u>1,166.24</u>	<u>7,261.03</u>		<u>236,738.97</u>	<u>2.98</u>
<u>D. EXPENDITURES</u>						
Type 30 Equipment	437,000	.00	.00	0.00	437,000.00	0.00
Type 40 Energy	0	.00	.00	0.00	.00	0.00
Type 60 Bond Levy Issuance	0	.00	.00	0.00	.00	0.00
Type 90 Debt	0	.00	.00	0.00	.00	0.00
<u>Total EXPENDITURES</u>	<u>437,000</u>	<u>.00</u>	<u>.00</u>	<u>0.00</u>	<u>437,000.00</u>	<u>0.00</u>
<u>E. OTHER FIN. USES TRANS. OUT (GL 536)</u>	<u>0</u>	<u>.00</u>	<u>.00</u>			
<u>F. OTHER FINANCING USES (GL 535)</u>	<u>0</u>	<u>.00</u>	<u>.00</u>			
<u>G. EXCESS OF REVENUES/OTHER FIN SOURCES OVER (UNDER) EXP/OTH FIN USES (C-D-E-F)</u>	<u>193,000-</u>	<u>1,166.24</u>	<u>7,261.03</u>		<u>200,261.03</u>	<u>103.76-</u>
<u>H. TOTAL BEGINNING FUND BALANCE</u>	<u>195,000</u>		<u>438,417.09</u>			
<u>I. GLS 896, 897, 898 ACCOUNTING CHANGES AND ERROR CORRECTIONS (+OR-)</u>	<u>XXXXXXXXX</u>		<u>.00</u>			
<u>J. TOTAL ENDING FUND BALANCE (G+H + OR - I)</u>	<u>2,000</u>		<u>445,678.12</u>			

K. ENDING FUND BALANCE ACCOUNTS:

G/L 810 Restricted For Other Items	0	.00
G/L 819 Restricted for Fund Purposes	2,000	445,678.12
G/L 830 Restricted for Debt Service	0	.00
G/L 835 Restrictd For Arbitrage Rebate	0	.00
G/L 850 Restricted for Uninsured Risks	0	.00
G/L 889 Assigned to Fund Purposes	0	.00
G/L 890 Unassigned Fund Balance	0	.00
<u>TOTAL</u>	2,000	445,678.12

2024-2025 Medical Lake School District Enrollment

Number of months to use in average

7

	SEPTEMBER		OCTOBER		NOVEMBER		DECEMBER		JANUARY		FEBRUARY		MARCH		APRIL		MAY		JUNE		AVERAGE	
	Count	FTE's	Count	FTE's	Count	FTE's	Count	FTE's	Count	FTE's	Count	FTE's	Count	FTE's	Count	FTE's	Count	FTE's	Count	FTE's	Count	FTE's
K	82	81.31	82	81.31	82	81.31	81	80.31	82	81.31	82	81.31	82	81.31							82	81.17
One	77	77.00	78	78.00	78	78.00	80	80.00	81	81.00	79	79.00	78	78.00							79	78.71
Two	85	85.00	84	84.00	83	83.00	85	85.00	85	85.00	84	84.00	83	83.00							84	84.14
Three	84	84.00	85	85.00	84	84.00	84	84.00	86	85.54	85	84.54	86	85.54							85	84.66
Four	70	70.00	69	69.00	69	69.00	70	70.00	70	70.00	69	69.00	70	70.00							70	69.57
Five	82	82.00	82	82.00	83	83.00	83	83.00	83	83.00	82	82.00	82	82.00							82	82.43
HALLETT	480	479.31	480	479.31	479	478.31	483	482.31	487	485.85	481	479.85	481	479.85							482	480.68
K	82	82.00	82	82.00	82	82.00	82	82.00	80	80.00	79	79.00	76	76.00							80	80.43
One	61	61.00	61	61.00	62	62.00	60	60.00	61	61.00	59	59.00	57	57.00							60	60.14
Two	58	58.00	60	60.00	60	60.00	57	57.00	55	55.00	51	51.00	50	50.00							56	55.86
Three	66	66.00	65	65.00	64	64.00	64	64.00	61	61.00	62	62.00	60	60.00							63	63.14
Four	52	52.00	50	50.00	53	53.00	51	51.00	50	50.00	51	51.00	49	49.00							51	50.86
Five	50	50.00	50	50.00	49	49.00	48	48.00	48	48.00	47	47.00	46	46.00							48	48.29
ANDERSON	369	369.00	368	368.00	370	370.00	362	362.00	355	355.00	349	349.00	338	338.00							359	358.71
Five																						
Six	131	131.00	132	132.00	134	134.00	133	133.00	133	133.00	134	134.00	134	134.00							133	133.00
Seven	127	127.00	128	128.00	130	130.00	128	128.00	129	129.00	129	129.00	131	131.00							129	128.86
Eight	118	118.00	120	120.00	120	120.00	119	119.00	121	121.00	121	121.00	122	122.00							120	120.14
MLMS	376	376.00	380	380.00	384	384.00	380	380.00	383	383.00	384	384.00	387	387.00							382	382.00
Seven																						
Eight																						
Nine	122	121.36	122	121.36	122	120.72	121	119.72	123	121.72	123	122.07	122	121.07							122	121.15
Ten	118	118.00	113	113.00	116	116.00	116	116.00	116	116.00	113	113.00	115	115.00							115	110.86
Eleven	131	106.23	130	106.21	131	107.38	132	108.38	131	107.72	133	111.12	133	110.59							132	104.75
Twelve	137	106.51	136	105.06	135	103.91	134	102.57	138	106.59	138	105.46	136	103.46							136	104.79
MLHS	508	452.10	501	445.63	504	448.01	503	446.67	508	452.03	507	451.65	506	450.12							505	449.46
TOTAL	1,733	1,676.41	1,729	1,672.94	1,737	1,680.32	1,728	1,670.98	1,733	1,675.88	1,721	1,664.50	1,712	1,654.97							1,728	1,670.86
Hallett	1	1.00	1	1.00	1	1.00	1	1.00	1	1.00	1	1.00	1	1.00							1	1.00
Anderson	2	2.00	4	4.00	4	4.00	3	3.00	3	3.00	3	3.00	3	3.00							3	3.14
MLMS	10	8.99	14	12.66	18	16.66	20	18.66	21	19.48	22	18.99	27	23.32							19	16.97
Connect+	13	11.99	19	17.66	23	21.66	24	22.66	25	23.48	26	22.99	31	27.32							23	21.11
Nine			2	1.69	4	3.21	5	4.69	5	4.69	11	10.36	12	11.27							7	5.99
Ten					2	2.00	1	1.00	2	2.00	4	3.41	4	2.75							3	2.23
Eleven	3	1.91	5	3.27	5	3.27	8	6.27	8	6.27	10	7.89	13	10.43							7	5.62
Twelve	15	11.12	16	11.48	19	13.84	19	13.73	20	15.04	21	16.17	19	14.00							18	13.63
Connect+	18	13.03	23	16.44	30	22.32	33	25.69	35	28.00	46	37.83	48	38.45							33	25.97
RS			48		48		47		46		46		46									
RS Only			34		35		32		30		30		27									
RS Non-Voc				40.87		41.06		40.80		40.32		39.46		37.80								
RS Voc.				-																		
TK	20	20.00	22	22.00	22	22.00	21	21.00	21	21.00	20	20.00	20	20.00							21	20.86
K-21 SpEd	207		217		221		222		227		221		223								220	
3-5 SpEd	26		30		34		32		35		36		36								33	
SpEd TK	1		2		2		3		3		3		3								2	
Total SpEd	234		249		257		257		265		260		262								255	
E-672	1	1.00	1	1	1	1.00	1	1.00	1	1.00											1	1.00
Fed Pre	72		75		77		76		75		76		74								75	
SpEd Pre	27		32		36		34		38		39		39								35	
Total Pre	99		107		113		110		113		115		113								110	
ESL	17		24		27		25		26		26		27								25	
MS Voc.Ed.																						
HS Voc.Ed.		121.64		117.66		114.74		114.60		114.45		106.01		104.29								113.34
Open Doors	1		1		2		2		2		2		3								2	
O.D. Voc																						
O.D. Non V		1.00		1.00		2.00		2.00		2.00		2.00		3.00								1.86

Coversheet

Approve the 2025/2026 School Year Calendar

Section: IV. Individual Actions Items
Item: B. Approve the 2025/2026 School Year Calendar
Purpose: Vote
Submitted by:
Related Material: Calendar Drafts 2025-2026 - Draft C_ Pre Labor Day_ February Break.pdf
Calendar Drafts 2025-2026 - Draft D.pdf



Medical Lake School District 2025-2026 Calendar

AUGUST																				
August 2025 (3)						February 2026 (15)														
Mon	Tue	Wed	Thu	Fri	1	Mon	Tue	Wed	Thu	Fri	2	3	4	5	6					
4	5	6	7	8	TBD.....6th Grade Sneak Peek	9	10	11	12	13	16	17	18	19	20					
11	12	13	14	15	TBD.....9th Grade Sneak Peek	23	24	25	26	27	March 2026 (21)									
18	19	20	21	22	August 25.....Professional Learning Day #1/Benefits Fair						Mon	Tue	Wed	Thu	Fri	2	3	4	5	6
25	26	27	28	29	TBD.....MAE Open House						9	10	11	12	13	16	17	18	19	20
September 2025 (21)											March 2026 (21)									
Mon	Tue	Wed	Thu	Fri	TBD.....Hallett Open House						Mon	Tue	Wed	Thu	Fri	23	24	25	26	27
1	2	3	4	5	August 27..... First Day of School						30	31				April 2026 (17)				
SEPTEMBER											Mon	Tue	Wed	Thu	Fri	6	7	8	9	10
8	9	10	11	12	September 1.....Labor Day - No School						13	14	15	16	17	20	21	22	23	24
15	16	17	18	19	TBD.....Middle School Open House						27	28	29	30		May 2026 (19)				
22	23	24	25	26	OCTOBER															
29	30				October 10.....Professional Learning Day #2 - No School						Mon	Tue	Wed	Thu	Fri	1	2	3	4	5
October 2025 (22)						NOVEMBER														
Mon	Tue	Wed	Thu	Fri	TBD.....MS/HS Term 1 Ends						6	7	8	9	10	13	14	15	16	17
		1	2	3	November 11.....Veteran's Day - No School						20	21	22	23	24	27	28	29	30	
6	7	8	9	10	TBD.....K-5 End of Trimester 1						May 2026 (19)									
13	14	15	16	17	November 24-25.....Parent Teacher Conferences						Mon	Tue	Wed	Thu	Fri	1	2	3	4	5
20	21	22	23	24	November 26-28.....Thanksgiving Break						4	5	6	7	8	11	12	13	14	15
27	28	29	30	31	DECEMBER						18	19	20	21	22	25	26	27	28	29
November 2025 (16)						December 22-January 2.....Winter Break														
Mon	Tue	Wed	Thu	Fri	JANUARY															
3	4	5	6	7	January 19.....Martin Luther King Jr. Day - No School						18	19	20	21	22	25	26	27	28	29
10	11	12	13	14	TBD.....MS/HS Term 2/Semester 1 Ends						June 2026 (12)									
17	18	19	20	21	FEBRUARY						Mon	Tue	Wed	Thu	Fri	1	2	3	4	5
24	25	26	27	28	February 16.....President's Day - No School						8	9	10	11	12	15	16	17	18	19
December 2025 (15)						February 17-20.....Mid-Winter Break														
Mon	Tue	Wed	Thu	Fri	MARCH						22	23	24	25	26	29	30			
1	2	3	4	5	TBD.....K-5 End of Trimester 2						July 2026									
8	9	10	11	12	March 12-13.....Parent/Teacher Conferences						Mon	Tue	Wed	Thu	Fri	1	2	3	4	5
15	16	17	18	19	March 20.....Professional Learning Day #3- No School						6	7	8	9	10	13	14	15	16	17
22	23	24	25	26	TBD.....MS/HS Term 3 Ends						20	21	22	23	24	27	28	29	30	31
29	30	31			APRIL															
January 2026 (19)						April 6-10.....Spring Break														
Mon	Tue	Wed	Thu	Fri	MAY															
			1	2	May 22.....Weather Make Up Day						Tentative Weather Make Up Days									
5	6	7	8	9	May 25.....Memorial Day - No School						5/22				6/17					
12	13	14	15	16	May 27.....Last Day for Activity Bus															
19	20	21	22	23	JUNE															
26	27	28	29	30	TBD.....MLHS Commencement															
						June 16.....Last Day of School - Early Dismissal														
						June 19.....Juneteenth - School Buildings Closed														
						June 30.....School Buildings Close for Summer														

Board Approved:

Revised:



Medical Lake School District

2025-2026 Calendar

AUGUST					AUGUST					February 2026 (18)					
August 2025					August 20.....School Buildings Open						February 2026 (18)				
Mon	Tue	Wed	Thu	Fri	August 20.....New Staff Orientation	Mon	Tue	Wed	Thu	Fri	2	3	4	5	6
				1	August 21.....All Staff Inservice/Qmltive Training						9	10	11	12	13
4	5	6	7	8	TBD.....6th Grade Sneak Peek						16	17	18	19	20
11	12	13	14	15	TBD.....9th Grade Sneak Peek						23	24	25	26	27
18	19	20	21	22	August 27.....Professional Learning Day #1/Benefits Fair						March 2026 (21)				
25	26	27	28	29	TBD.....MAE Open House						March 2026 (21)				
September 2025 (20)					TBD.....Hallett Open House						March 2026 (21)				
Mon	Tue	Wed	Thu	Fri	SEPTEMBER					Mon	Tue	Wed	Thu	Fri	
1	2	3	4	5	September 1.....Labor Day - No School	2	3	4	5	6	9	10	11	12	13
8	9	10	11	12	September 3..... First Day of School	16	17	18	19	20	16	17	18	19	20
15	16	17	18	19	TBD.....Middle School Open House	23	24	25	26	27	23	24	25	26	27
22	23	24	25	26	OCTOBER					30	31				
29	30				October 10.....Professional Learning Day #2 - No School						April 2026 (17)				
October 2025 (22)					NOVEMBER					Mon	Tue	Wed	Thu	Fri	
Mon	Tue	Wed	Thu	Fri	TBD.....MS/HS Term 1 Ends			1	2	3					
		1	2	3	November 11.....Veteran's Day - No School	6	7	8	9	10	6	7	8	9	10
6	7	8	9	10	TBD.....K-5 End of Trimester 1	13	14	15	16	17	13	14	15	16	17
13	14	15	16	17	November 24-25.....Parent Teacher Conferences	20	21	22	23	24	20	21	22	23	24
20	21	22	23	24	November 26-28.....Thanksgiving Break	27	28	29	30		27	28	29	30	
27	28	29	30	31	DECEMBER					May 2026 (19)					
November 2025 (16)					December 22-January 2.....Winter Break	Mon	Tue	Wed	Thu	Fri					1
Mon	Tue	Wed	Thu	Fri	JANUARY										
3	4	5	6	7	January 19.....Martin Luther King Jr. Day - No School	4	5	6	7	8	4	5	6	7	8
10	11	12	13	14	TBD.....MS/HS Term 2/Semester 1 Ends	11	12	13	14	15	11	12	13	14	15
17	18	19	20	21	FEBRUARY					18	19	20	21	22	
24	25	26	27	28	February 13.....Weather Make Up Day	25	26	27	28	29	18	19	20	21	22
December 2025 (15)					February 16.....President's Day - No School						June 2026 (13)				
Mon	Tue	Wed	Thu	Fri	MARCH					Mon	Tue	Wed	Thu	Fri	
1	2	3	4	5	TBD..... K-5 End of Trimester 2	1	2	3	4	5	1	2	3	4	5
8	9	10	11	12	March 12-13.....Parent/Teacher Conferences	8	9	10	11	12	8	9	10	11	12
15	16	17	18	19	March 20.....Professional Learning Day #3- No School	15	16	17	18	19	15	16	17	18	19
22	23	24	25	26	TBD.....MS/HS Term 3 Ends	22	23	24	25	26	22	23	24	25	26
29	30	31			APRIL					29	30				
January 2026 (19)					April 6-10.....Spring Break						July 2026				
Mon	Tue	Wed	Thu	Fri	MAY					Mon	Tue	Wed	Thu	Fri	
			1	2	May 22.....Weather Make Up Day			1	2	3					
5	6	7	8	9	May 25.....Memorial Day - No School	6	7	8	9	10	6	7	8	9	10
12	13	14	15	16	JUNE					13	14	15	16	17	
19	20	21	22	23	June 2.....Last Day for Activity Bus	20	21	22	23	24	20	21	22	23	24
26	27	28	29	30	TBD.....MLHS Commencement	27	28	29	30	31	27	28	29	30	31
					June 17.....Last Day of School - Early Dismissal						<i>Tentative Weather Make Up Days</i>				
<i>Board Approved:</i>					June 19.....Juneteenth - School Buildings Closed			2/13		5/22					
<i>Revised:</i>					July 1.....School Buildings Close for Summer			6/18		6/22					

Coversheet

Approve the Annual Drug Free Workplace Notice of Compliance

Section: IV. Individual Actions Items
Item: C. Approve the Annual Drug Free Workplace Notice of Compliance
Purpose: Vote
Submitted by:
Related Material: Notice of Drug-Free Workplace Compliance (1).pdf

March 25, 2025

TO: ALL STAFF MEMBERS
FROM: Dr. Kimberly Headrick, Superintendent
RE: Drug-Free Workplace Requirements

As a mandate from the U.S. Department of Education Public Law 874 Impact Aid Program and in keeping with the Drug-Free Workplace Act of 1988, 34CFR Part 85, Subpart F, as published in the Federal Register, every school district that receives funds must attest that it certifies a drug-free workplace. As a part of our annual Impact Aid application, I have done this. By doing so I have certified that our district will maintain a drug-free workplace and will so enforce WAC 180-44-060 Regulatory provisions relating to Drugs and Alcohol - Use is cause for dismissal and Medical Lake School District Policy No. 5281 as it relates to disciplinary action and discharge for such a violation.

The Medical Lake School District recognizes its responsibility to maintain a drug-free workplace. In recognition of that responsibility and in order to be in compliance with the Drug-Free Workplace Act of 1988, no employee engaged in work shall unlawfully manufacture, distribute, dispense, possess or use on or in any approved school district building, premises, assigned work location, or vehicle any narcotic drug, hallucinogenic drug, amphetamine, barbiturate, marijuana, or any other controlled substance.

As a condition of employment each employee shall abide by the terms of the Medical lake School District policy respecting a drug-free workplace.

An employee who violates the terms of this policy may be suspended, discharged, or nonrenewed in accordance with the provisions of board policy and state law.



Any employee may be required to satisfactorily complete a drug rehabilitation or treatment program approved by the superintendent or designee, at the employee's expense. Nothing in this policy shall be construed to guarantee reinstatement of any employee who violates this policy, nor does the Medical Lake School District incur any financial obligation for treatment or rehabilitation ordered as a condition of eligibility for reinstatement.

Coversheet

Approve the Surplus of Old Cheer and Wrestling Outfits ~ High School

Section: IV. Individual Actions Items
Item: E. Approve the Surplus of Old Cheer and Wrestling Outfits ~ High School
Purpose: Vote
Submitted by:
Related Material: image000000.png
1000018883.jpg

Cardinals

 Remove people in background 


Share


Edit


Lens


Trash



Coversheet

Ashley ~ Michael Anderson Elementary School; Trinity ~ Middle School; Chuks ~ High School; Gabby ~ Hallett Elementary

Section: V. Student Representatives Report
Item: A. Ashley ~ Michael Anderson Elementary School; Trinity ~ Middle School; Chuks ~ High School; Gabby ~ Hallett Elementary
Purpose: Discuss
Submitted by:
Related Material: Student Representative Board Report March 2025.pdf



MLSD Student Representative Board Report March 2025

Michael Anderson Elementary- Ashley

- What are they planning for the future 5th, 8th, and 12th grades? Do they feel prepared? If not, what do you still need?
 - They are looking forward to making friends. One is moving to Japan and excited for that. They are preparing for harder work in MS. Most said they feel prepared, but would like more of MS experience like rotating through subjects. Almost all felt prepared.
- Areas for improvement
 - Need harder work, math was hard but now seems easy (Fractions vs. Geometry)
 - School is great, no big changes, just minor ones.
- Advice for younger grades
 - Be a good leader and help out the younger kids, be nice and not rude.

Hallett Elementary- Gabby

- What are they planning for the future 5th, 8th, and 12th grades? Do they feel prepared? If not, what do you still need?
 - Plan to really keep up with their work in MS, prepared but know that it a big change, really excited to meet new teachers and have new teachers, like more opportunities for art- 4th to 5th grade, looking for a better understanding of math
- Areas for improvement
 - 4th grade would like to see students pick up more trash in the cafeteria-
 - 4th- Saw someone getting picked on at recess and talked to an adult
 - 4th- Some name calling going on in class and at recess
- Advice for younger grades
 - 5th- Work hard, respect teacher, put name on paper, be prepared for harder work
 - 4th- They are going to have fun
 - 1st- Have to pay attention, not talk a lot, and make good choices



MLSD Student Representative Board Report March 2025

Medical Lake Middle School- Trinity

- What are they planning for the future 5th, 8th, and 12th grades? Do they feel prepared?
If not, what do you still need?
 - 8th- Felt like they were prepared, but did not know what they were getting into
 - 6th grade felt
- Areas for improvement
 - More clubs and competitive soccer teams
- Advice for younger grades
 - Work hard for your grades, wish they had worked harder
 - MS is not as bad as you think; it isn't that much harder

Medical Lake High School- Chuks

- What are they planning for the future 5th, 8th, and 12th grades? Do they feel prepared?
If not, what do you still need?
 - Military, college, college for psychology, and track
 - Yes, they are prepared, but feel like it's coming up really fast
- Areas for improvement
 - Need more CCR time that focuses on financial skills, like how to file for taxes, etc.
 - Lifeskills for finance and how to apply for scholarships
- Advice for younger grades
 - Listen to advice from others and take advantage of it.
 - Lock in and get work done as soon as possible
 - Focus on grades, but don't stress over high school

Coversheet

Spring Sports Report ~ Dawn Eliassen

Section: VI. Reports and Discussions
Item: A. Spring Sports Report ~ Dawn Eliassen
Purpose: Discuss
Submitted by:
Related Material: Cardinal Playbook Vol. 12.jpg

CARDINAL PLAYBOOK

VOL. 12 - 3/19/2025

BOOSTER CLUB MEETING

WEDNESDAY APRIL 2 @ 6:00
PIZZA FACTORY

EVERYONE IS WELCOME!

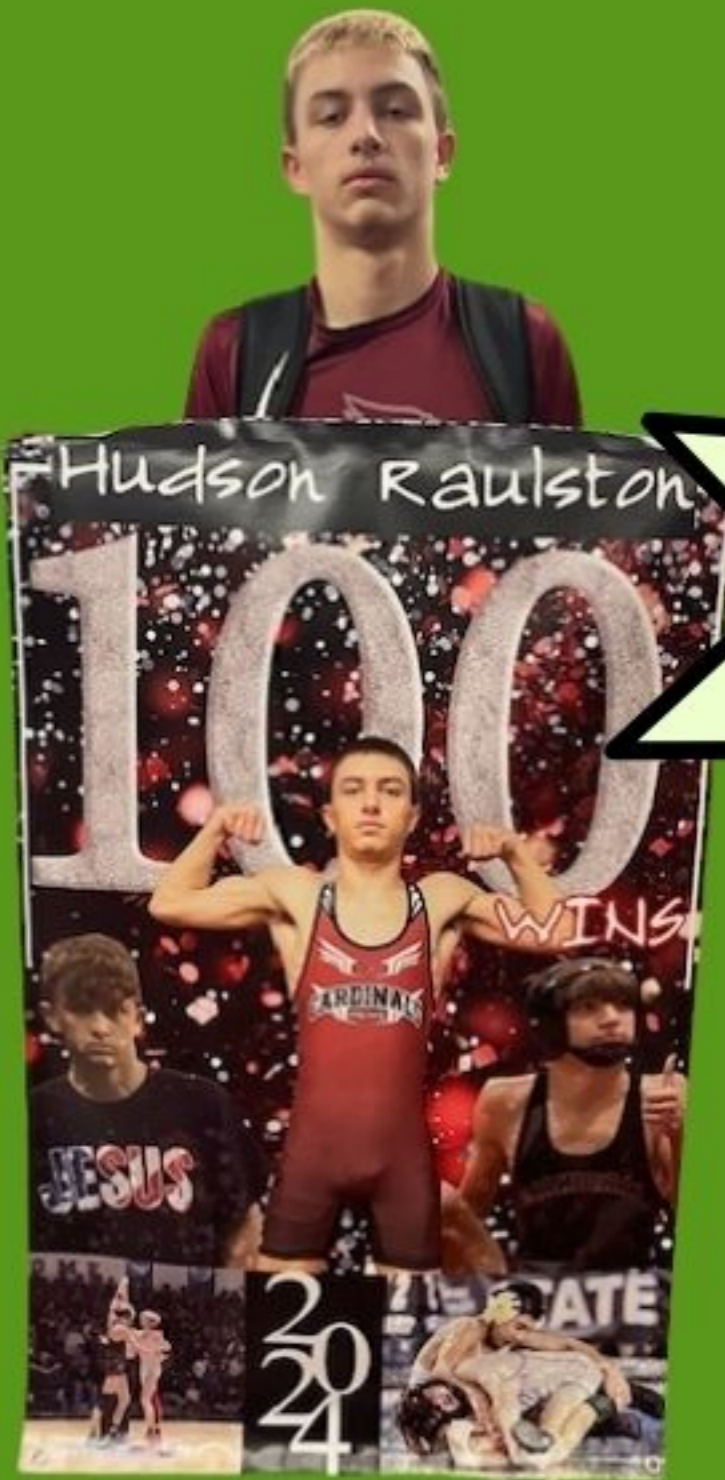
UPCOMING HOME EVENTS

THURSDAY MARCH 20 @ 5:00
VARSITY BASEBALL V. CHENEY

THURSDAY MARCH 20 @ 4:00
SOFTBALL V. FREEMAN

THURSDAY MARCH 20 @ 3:30
TENNIS V. FREEMAN

TUESDAY MARCH 25 @ 4:00
SOCCER V. NWC



HUDSON RAULSTON (12)
EARNED HIS 100TH HS WIN
DURING WRESTLING
SEASON THIS WINTER!!

2024-2025 STATS:

250 - CARDINALS PARTICIPATED IN AT LEAST ONE SPORT THIS YEAR.

177 - CARDINALS CURRENTLY PARTICIPATING IN A SPRING SPORT.

25 - CARDINALS CURRENTLY PARTICIPATING IN THEIR THIRD SPORT OF THE YEAR.

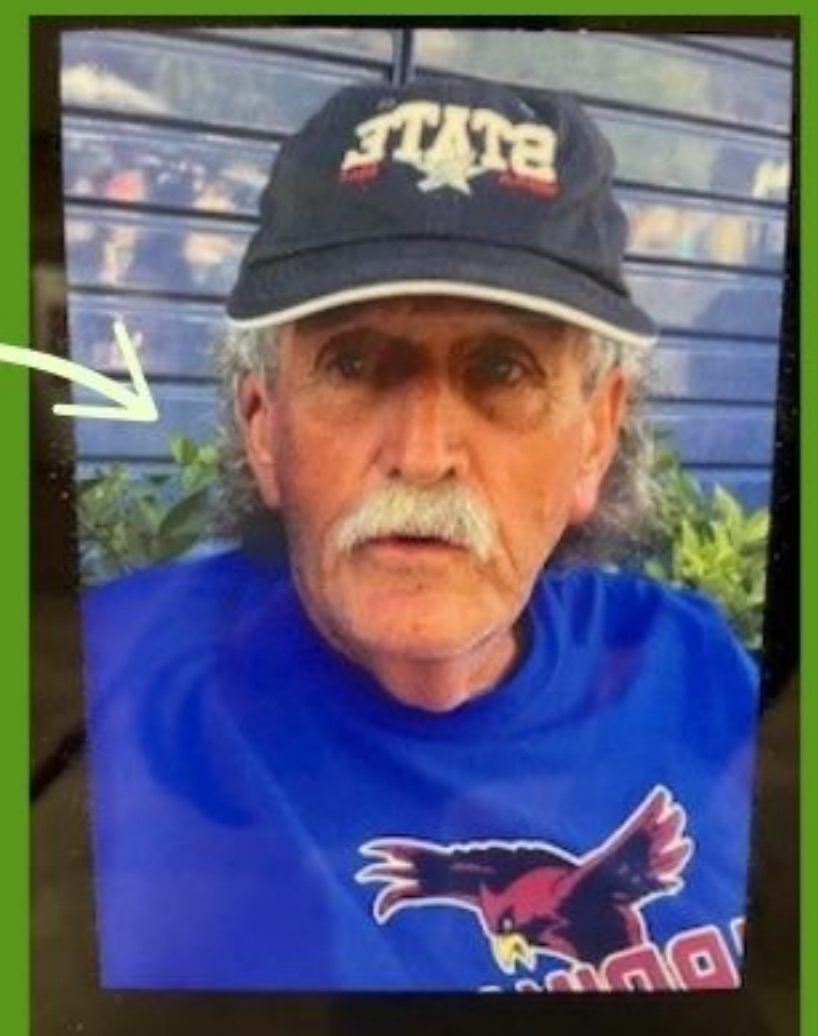
96 - CARDINALS PLAYED TWO SPORTS THIS YEAR.

44 - COACHES PROVIDED COUNTLESS HOURS OF LEADERSHIP AND GUIDANCE.

MLHS COACHES EARN HONORS



HEAD FOOTBALL COACH, NICK PUZYCKI, WAS AWARDED THE WIAA'S US ARMY "SALUTE TO COACHES AWARD" WHICH RECOGNIZES COACHES WHO EMBODY THE US ARMY VALUES OF LOYALTY, DUTY, RESPECT, SELFLESS SERVICE, HONOR, INTEGRITY, AND PERSONAL COURAGE.



VETERAN TRACK AND FIELD AND CROSS COUNTRY COACH, GENE BLANKENSHIP, WAS INDUCTED INTO THE WASHINGTON STATE CROSS COUNTRY COACHES HALL OF FAME IN JANUARY.

Coversheet

Asset Preservation Program Discussion

Section: VI. Reports and Discussions
Item: B. Asset Preservation Program Discussion
Purpose: Discuss
Submitted by:
Related Material:
Medical Lake Detailed Condition Assessment By Building (3-17-25) (3).pdf



School Facilities and Organization
 INFORMATION AND CONDITION OF SCHOOLS
Detailed Condition Assessment by Building
Reporting Year 2024-2025

Medical Lake

65.75

Hallett Elementary School - Main Building

Building Details

PROFILE TYPE	Elementary School - Single Story
NUMBER OF FLOORS	1
BOARD ACCEPTANCE DATE	11/2/1995
CHARACTERISTICS	Occupied
ANNUAL REVIEW COMPLETED BY	District

This building is required to comply with the Asset Preservation Program

REPORTING YEAR	APP YEAR	BUILDING CONDITION ASSESSMENT	ANNUAL REVIEW COMPLETED BY	BOARD REPORT PRESENT DATE
2024-2025	29	65.75	District	3/25/2025
2023-2024	28	65.76	Consultant	3/26/2024
2022-2023	27	76.79	District	3/28/2023
2021-2022	26	77.57	District	3/22/2022
2020-2021	25	77.73	District	3/23/2021
2019-2020	24	79.32	District	4/28/2020

The next certified BCA is due: 2029

Building Inventory

AREA YEAR BUILT	DISTRICT ASSIGNED AREA	GROSS BUILDING SQ FT	GROSS INSTRUCTIONAL SQ FT	SCAP RECOGNIZED SQ FT	ORIGINAL OCCUPANCY DATE	ORIGINAL BOARD ACCEPTANCE DATE
1995	Main Area	59,074	59,074	59,074	9/5/1995	11/2/1995
2011	Classroom Addition	9,370	9,370	9,370	8/30/2011	1/22/2013
Building Totals		68,444	68,444	68,444		

Building Components

SUB-ASSEMBLY	COMPONENT	COMPONENT CODE	MAINTENANCE PRIORITY	CONDITION RATING
Foundations	Standard Foundation	A1010	Low	90.00% Good
Slabs on Grade	Standard Slabs on Grade	A4010	Low	62.00% Fair
	<i>Deficiencies:</i>	Minor Cracking		
	<i>Causes:</i>	Other		

Building Components

SUB-ASSEMBLY	COMPONENT	COMPONENT CODE	MAINTENANCE PRIORITY	CONDITION RATING
Slabs on Grade	<i>Comments:</i>	cafeteria flooring cracking and at transitions from carpet to VCT, potentially differential settling below grade		
Water and Gas Mitigation	Building Subdrainage	A6010	Low	90.00% Good
Superstructure	Roof Construction	B1020	Low	90.00% Good
Exterior Vertical Enclosures	<i>Comments:</i>			
	Exterior Walls	B2010	Medium	62.00% Fair
	<i>Deficiencies:</i>	Cracking, Peeling, Flaking, Damaged Masonry, Efflorescence and Staining		
	<i>Causes:</i>	Other		
	<i>Comments:</i>	Exterior CMU has minor cracking, staining from irrigation spraying on building. Accent color of stucco is bleeding onto lighter field color.		
	Exterior Windows	B2020	Medium	30.00% Poor
	<i>Deficiencies:</i>	Deficient Hardware/Operating Parts, Other		
	<i>Causes:</i>	Other		
	<i>Comments:</i>	windows approaching end of service life. Window seals and internal blinds have failed in some locations.		
	Exterior Doors and Grilles	B2050	Medium	30.00% Poor
<i>Deficiencies:</i>	Deficient Hardware/Operating Parts, Frame/Molding Warped, Other			
<i>Causes:</i>	Material Condition, Security			
<i>Comments:</i>	damaged doors observed, some door hardware failure occurring			
	Exterior Louvers and Vents	B2070	Medium	90.00% Good
Exterior Horizontal Enclosures	Roofing	B3010	High	30.00% Poor
	<i>Deficiencies:</i>	Faulty Material, Other		
	<i>Causes:</i>	Other, Surface Weathering		
	<i>Comments:</i>	roof is at or near end of service life. Shingle roof flaking, repairs at ridge needed		
	Roof Appurtenances	B3020	Medium	62.00% Fair
	Horizontal Openings	B3060	Medium	90.00% Good
	Overhead Exterior Enclosures	B3080	Medium	62.00% Fair

Building Components

SUB-ASSEMBLY	COMPONENT	COMPONENT CODE	MAINTENANCE PRIORITY	CONDITION RATING
Exterior Horizontal Enclosures	<i>Deficiencies:</i>	Efflorescence and Staining		
	<i>Causes:</i>	Insect Infestation, Surface Damage		
Interior Construction	Interior Partitions	C1010	Medium	62.00% Fair
	Interior Windows	C1020	Medium	90.00% Good
	Interior Doors	C1030	Medium	90.00% Good
	Interior Grilles and Gates	C1040	Medium	62.00% Fair
	Raised Floor Construction	C1060	Low	90.00% Good
	Suspended Ceiling Construction	C1070	Low	90.00% Good
Interior Finishes	Wall Finishes	C2010	Medium	62.00% Fair
	<i>Deficiencies:</i>	Cracking, Peeling, Flaking, Surface Appearance		
	<i>Causes:</i>	Other		
	<i>Comments:</i>	Overall interior finishes are good for age of building. Gym CMU shows moderate minor cracking. Water intrusion not evident. Overall finishes are being maintained well for age of building.		
	Interior Fabrications	C2020	Low	90.00% Good
	Flooring	C2030	High	62.00% Fair
	<i>Deficiencies:</i>	Holes, Tears, Other, Stains, Discoloration		
	<i>Causes:</i>	Deterioration, Other		
<i>Comments:</i>	Carpet needs replacement, particularly in classrooms when students ate in classrooms.			
Plumbing	Ceiling Finishes	C2050	Medium	62.00% Fair
	Domestic Water Distribution	D2010	Medium	62.00% Fair
	Sanitary Drainage	D2020	Medium	90.00% Good
	Building Support Plumbing Systems	D2030	Medium	62.00% Fair
HVAC	Facility Fuel Systems	D3010	Medium	62.00% Fair
	Heating Systems	D3020	High	62.00% Fair
	<i>Deficiencies:</i>	Other		
<i>Causes:</i>	Other			

Building Components

SUB-ASSEMBLY	COMPONENT	COMPONENT CODE	MAINTENANCE PRIORITY	CONDITION RATING
HVAC	<i>Comments:</i>	Boilers replaced 2005, water source heat pumps are original. System functional and operating well for age. Preventative maintenance is ongoing.		
	Cooling Systems	D3030	Low	62.00% Fair
	<i>Deficiencies:</i>	Other		
	<i>Causes:</i>	Other		
	<i>Comments:</i>	original cooling tower and heat pumps. System is performing well for its age. Maintenance is ongoing.		
	Facility HVAC Distribution Systems	D3050	Low	62.00% Fair
	Ventilation	D3060	Low	62.00% Fair
Fire Protection	Fire Suppression	D4010	Low	30.00% Poor
	<i>Deficiencies:</i>	Other		
	<i>Causes:</i>	Pipe Deterioration		
	<i>Comments:</i>	Dry system has pinhole leaks. Overall system breaks a few times/year.		
	Fire Protection Specialties	D4030	Low	90.00% Good
Electrical	Facility Power Generation	D5010	Low	90.00% Good
	Electrical Services and Distribution	D5020	Low	90.00% Good
	General Purpose Electrical Power	D5030	Low	62.00% Fair
	Lighting	D5040	Low	90.00% Good
	Communications	Data Communications	D6010	Low
Voice Communications		D6020	Low	90.00% Good
Audio-Video Communications		D6030	Low	62.00% Fair
Distributed Communications and Monitoring		D6060	Low	30.00% Poor
<i>Deficiencies:</i>		Other		
<i>Causes:</i>		Equipment Obsolescence		
<i>Comments:</i>		Controls old, challenging to repair and interface with other systems.		
Electronic Safety and Security	Access Control and Intrusion Detection	D7010	Low	62.00% Fair
	Electronic Surveillance	D7030	Low	62.00% Fair

Building Components

SUB-ASSEMBLY	COMPONENT	COMPONENT CODE	MAINTENANCE PRIORITY	CONDITION RATING
Electronic Safety and Security	<i>Deficiencies:</i>	Blind Zones , Other		
	<i>Causes:</i>	Equipment Obsolescence, Other		
	<i>Comments:</i>	system is operational but needs to be upgraded.		
	Detection and Alarm	D7050	Low	62.00% Fair
Integrated Automation	Integrated Automation Facility Controls	D8010	Low	62.00% Fair
Equipment	Commercial Equipment	E1030	Low	30.00% Poor
	<i>Deficiencies:</i>	Other		
	<i>Causes:</i>	Age Deterioration		
	<i>Comments:</i>	Most of equipment at end of useful life.		
	Institutional Equipment	E1040	Low	62.00% Fair
	Entertainment and Recreational Equipment	E1070	Low	62.00% Fair
Furnishings	Other Equipment	E1090	Low	62.00% Fair
	Fixed Furnishings	E2010	Low	62.00% Fair
	Movable Furnishings	E2050	Low	62.00% Fair



School Facilities and Organization
 INFORMATION AND CONDITION OF SCHOOLS
Detailed Condition Assessment by Building
Reporting Year 2024-2025

Medical Lake

54.63

Medical Lake High School - 900 Wing Complex

Building Details

PROFILE TYPE	Classroom Building - Slabs On Grade
NUMBER OF FLOORS	1
CHARACTERISTICS	Occupied

Building Inventory

AREA YEAR BUILT	DISTRICT ASSIGNED AREA	GROSS BUILDING SQ FT	GROSS INSTRUCTIONAL SQ FT	SCAP RECOGNIZED SQ FT	ORIGINAL OCCUPANCY DATE	ORIGINAL BOARD ACCEPTANCE DATE
1960	Main Area	6,271	6,271	6,271		
1973	73 Addition	5,151	5,151	5,151		
Building Totals		11,422	11,422	11,422		

Building Components

SUB-ASSEMBLY	COMPONENT	COMPONENT CODE	MAINTENANCE PRIORITY	CONDITION RATING
Foundations	Standard Foundation	A1010	Low	62.00% Fair
	<i>Deficiencies:</i>	Cracking, Surface Deterioration		
	<i>Causes:</i>	Occupancy Changes, Temperature Changes		
Slabs on Grade	Standard Slabs on Grade	A4010	Low	62.00% Fair
	<i>Deficiencies:</i>	Minor Cracking, Surface Deterioration		
	<i>Causes:</i>	Design Loads, Surface Water		
Water and Gas Mitigation	Building Subdrainage	A6010	Low	30.00% Poor
	<i>Deficiencies:</i>	Other		
	<i>Causes:</i>	Other		
	<i>Comments:</i>	(2) of 3 sump pumps failed in last 3 years.		
Superstructure	Roof Construction	B1020	Low	30.00% Poor

Building Components

SUB-ASSEMBLY	COMPONENT	COMPONENT CODE	MAINTENANCE PRIORITY	CONDITION RATING
Superstructure	<i>Deficiencies:</i>	Excessive Heat Loss, Other		
	<i>Causes:</i>	Other		
	<i>Comments:</i>	sagging structure		
Exterior Vertical Enclosures	Exterior Walls	B2010	Low	30.00% Poor
	<i>Deficiencies:</i>	Efflorescence and Staining, Excessive Heat Loss		
	<i>Causes:</i>	Inadequate Insulation, Surface Damage		
	<i>Comments:</i>	Uninsulated structural CMU exterior envelope. cracking in some locations.		
	Exterior Windows	B2020	Low	62.00% Fair
	<i>Deficiencies:</i>	Deficient Hardware/Operating Parts, Frame/Molding Warped		
	<i>Causes:</i>	Flashing Failure		
	<i>Comments:</i>	Thermal seal broken, some single pane glass		
	Exterior Doors and Grilles	B2050	Low	30.00% Poor
	<i>Deficiencies:</i>	Deficient Hardware/Operating Parts, Other		
	<i>Causes:</i>	Caulking/Weather Stripping, Frame/Molding Condition		
	<i>Comments:</i>	Exterior overhead doors not insulated. Some in rooms that have changed use and are no longer relevant to curriculum taught in room. Threshholds rusting out.		
Exterior Louvers and Vents	B2070	Low	62.00% Fair	
<i>Deficiencies:</i>	Inadequate Air Flow, Sagging			
<i>Causes:</i>	Material Condition			
Exterior Horizontal Enclosures	Roofing	B3010	Low	30.00% Poor
	<i>Deficiencies:</i>	Faulty Material		
	<i>Causes:</i>	Surface Weathering		
	Roof Appurtenances	B3020	Low	62.00% Fair
	<i>Deficiencies:</i>	Fastening Failure		
	<i>Causes:</i>	Surface Weathering		
	Horizontal Openings	B3060	Low	62.00% Fair
	<i>Deficiencies:</i>	Leaking		
	<i>Causes:</i>	Surface Weathering		
	Overhead Exterior Enclosures	B3080	Low	62.00% Fair
	<i>Deficiencies:</i>	Efflorescence and Staining, Rusted Metal Finishes/Components		

Building Components

SUB-ASSEMBLY	COMPONENT	COMPONENT CODE	MAINTENANCE PRIORITY	CONDITION RATING
Exterior Horizontal Enclosures	<i>Causes:</i>	Surface Damage		
	<i>Comments:</i>	in FFA room (formerly autoshop)		
Interior Construction	Interior Partitions	C1010	Low	90.00% Good
	Interior Windows	C1020	Low	90.00% Good
	Interior Doors	C1030	Medium	30.00% Poor
	<i>Deficiencies:</i>	Acoustical Transference, Deficient Hardware/Operating Parts, Frame/Molding Warped, Rot or Corrosion		
	<i>Causes:</i>	Frame/Molding Condition, STC Rating		
	<i>Comments:</i>	Some doors unable to lock/align due to settling. Transfer noise between larger shop/high noise spaces to adjacent classrooms. Closures going bad.		
	Suspended Ceiling Construction	C1070	Low	62.00% Fair
<i>Deficiencies:</i>	Broken T-Bar or Perimeter Track			
<i>Causes:</i>	Need to Replace Components			
Interior Finishes	Wall Finishes	C2010		62.00% Fair
	<i>Deficiencies:</i>	Surface Appearance		
	<i>Causes:</i>	Surface Damage		
	Interior Fabrications	C2020		62.00% Fair
	Flooring	C2030		62.00% Fair
	<i>Deficiencies:</i>	Broken or Loose Tiles, Stains, Discoloration		
	<i>Causes:</i>	Deterioration		
	Ceiling Finishes	C2050		62.00% Fair
	<i>Deficiencies:</i>	Efflorescence and Staining, Surface Appearance		
	<i>Causes:</i>	Other		
<i>Comments:</i>	Multiple stained tiles.			
Plumbing	Domestic Water Distribution	D2010	Low	62.00% Fair
	<i>Deficiencies:</i>	Water Leaking		
	<i>Causes:</i>	Excessive Wear		
	<i>Comments:</i>	Water heaters at end of life		
	Sanitary Drainage	D2020	Low	30.00% Poor
<i>Deficiencies:</i>	Clogged Drains, Other			
<i>Causes:</i>	Other			

Building Components

SUB-ASSEMBLY	COMPONENT	COMPONENT CODE	MAINTENANCE PRIORITY	CONDITION RATING
Plumbing	<i>Comments:</i>	Sewer injection tank with pump gets clogged.		
	Building Support Plumbing Systems	D2030	Low	90.00% Good
HVAC	Facility Fuel Systems	D3010	Low	90.00% Good
	Heating Systems	D3020	Low	30.00% Poor
	<i>Deficiencies:</i>	Insufficient Heat		
	<i>Causes:</i>	Equipment Obsolescence		
	Facility HVAC Distribution Systems	D3050	Low	30.00% Poor
	<i>Deficiencies:</i>	System Inefficient, Uneven Zone Coverage		
	<i>Causes:</i>	Equipment Obsolescence, Other		
<i>Comments:</i>	Change in use of some rooms. Old equipment, not sufficient airflow/exhaust to support programs.			
Fire Protection	Ventilation	D3060	Low	90.00% Good
	Fire Suppression	D4010	Low	62.00% Fair
	<i>Deficiencies:</i>	Corrosion		
	<i>Causes:</i>	Pipe Deterioration		
Electrical	Fire Protection Specialties	D4030	Low	90.00% Good
	Electrical Services and Distribution	D5020	Low	62.00% Fair
	<i>Deficiencies:</i>	Other		
	<i>Causes:</i>	Equipment Obsolescence		
	<i>Comments:</i>	General system inconsistency.		
	General Purpose Electrical Power	D5030	Low	62.00% Fair
	<i>Deficiencies:</i>	Unsecured Access		
	<i>Causes:</i>	Equipment Obsolescence		
Lighting	Lighting	D5040	Low	62.00% Fair
	<i>Deficiencies:</i>	Uneven or Low light Levels		
	<i>Causes:</i>	Other		
	<i>Comments:</i>	Light levels low in retrofitted spaces for current use		
Communications	Data Communications	D6010	Low	62.00% Fair
	<i>Deficiencies:</i>	System is Intermittent		

Building Components

SUB-ASSEMBLY	COMPONENT	COMPONENT CODE	MAINTENANCE PRIORITY	CONDITION RATING
Communications	<i>Causes:</i>	Equipment Obsolescence		
	Voice Communications	D6020	Low	62.00% Fair
	<i>Deficiencies:</i>	Phones Not Coordinated		
	<i>Causes:</i>	Equipment Obsolescence		
	<i>Comments:</i>	Not fully compatible with main building system		
	Audio-Video Communications	D6030	Low	30.00% Poor
	<i>Deficiencies:</i>	Weak or Intermittent Signal		
	<i>Causes:</i>	Equipment Obsolescence		
	Distributed Communications and Monitoring	D6060	Low	30.00% Poor
	<i>Deficiencies:</i>	Weak or Intermittent Com		
<i>Causes:</i>	Equipment Obsolescence			
<i>Comments:</i>	Not connected consistently to main building.			
Electronic Safety and Security	Access Control and Intrusion Detection	D7010	Low	90.00% Good
	Electronic Surveillance	D7030	Low	62.00% Fair
	<i>Deficiencies:</i>	Blind Zones		
	<i>Causes:</i>	Insufficient Equipment		
	Detection and Alarm	D7050	Low	90.00% Good
Integrated Automation	Integrated Automation Facility Controls	D8010	Medium	30.00% Poor
	<i>Deficiencies:</i>	Other		
	<i>Causes:</i>	Equipment Obsolescence		
	<i>Comments:</i>	Out of date, limited service available for repair.		
Furnishings	Fixed Furnishings	E2010	Low	30.00% Poor
	<i>Deficiencies:</i>	Surface Deterioration		
	<i>Causes:</i>	Deterioration, Mineral/Rust Deposits, Physical Damage		
	Movable Furnishings	E2050	Low	30.00% Poor
	<i>Deficiencies:</i>	Surface Deterioration		
<i>Causes:</i>	Deterioration, Physical Damage			



School Facilities and Organization
 INFORMATION AND CONDITION OF SCHOOLS
Detailed Condition Assessment by Building
 Reporting Year 2024-2025

Medical Lake

60.15

Medical Lake High School - Main Building High School

Building Details

PROFILE TYPE	High School - Single Story
NUMBER OF FLOORS	2
CHARACTERISTICS	Occupied

Building Inventory

AREA YEAR BUILT	DISTRICT ASSIGNED AREA	GROSS BUILDING SQ FT	GROSS INSTRUCTIONAL SQ FT	SCAP RECOGNIZED SQ FT	ORIGINAL OCCUPANCY DATE	ORIGINAL BOARD ACCEPTANCE DATE
1952	Original HS	10,578	10,578	10,578		8/26/2003
1955	1955 Addition	13,001	13,001	13,001		8/26/2003
1960	1960 Addition	25,079	25,079	25,079		8/26/2003
1973	1973 Addition	16,869	16,869	16,869		8/26/2003
1999	1999 Addition	66,382	66,382	66,382		8/26/2003
Building Totals		131,909	131,909	131,909		

Building Components

SUB-ASSEMBLY	COMPONENT	COMPONENT CODE	MAINTENANCE PRIORITY	CONDITION RATING
Foundations	Standard Foundation	A1010	Low	90.00% Good
Slabs on Grade	Standard Slabs on Grade	A4010	Low	90.00% Good
Water and Gas Mitigation	Building Subdrainage	A6010	Low	30.00% Poor
	<i>Deficiencies:</i>	Other		
	<i>Causes:</i>	Other		
	<i>Comments:</i>	Water penetrating into lower level wrestling room spaces. Unsure of source, however subgrade drainage not present or not operating in this area.		

Building Components

SUB-ASSEMBLY	COMPONENT	COMPONENT CODE	MAINTENANCE PRIORITY	CONDITION RATING
Superstructure	Roof Construction	B1020	High	62.00% Fair
	<i>Deficiencies:</i>	Other		
	<i>Causes:</i>	Other		
	<i>Comments:</i>	Sagging/settling structure at commons (old gym), dome roof.		
Exterior Vertical Enclosures	Exterior Walls	B2010	Low	62.00% Fair
	<i>Deficiencies:</i>	Efflorescence and Staining		
	<i>Causes:</i>	Moisture Intrusion		
	Exterior Windows	B2020	Low	62.00% Fair
	<i>Deficiencies:</i>	Deficient Hardware/Operating Parts, Frame/Molding Warped, Rot or Corrosion		
	<i>Causes:</i>	Flashing Failure, U-Value		
	Exterior Doors and Grilles	B2050	Low	62.00% Fair
	<i>Deficiencies:</i>	Deficient Hardware/Operating Parts		
	<i>Causes:</i>	Frame/Molding Condition, Security, Wind Pressure		
	<i>Comments:</i>	Exterior doors damaged from propping doors open.		
	Exterior Louvers and Vents	B2070	Low	62.00% Fair
	<i>Deficiencies:</i>	Inadequate Air Flow, Ventilation		
<i>Causes:</i>	Material Condition			
Exterior Horizontal Enclosures	Roofing	B3010	Medium	62.00% Fair
	<i>Deficiencies:</i>	Leaking		
	<i>Causes:</i>	Cracks, Tears, Holes, and Breaks		
	<i>Comments:</i>	Portions not yet replaced are failing		
	Roof Appurtenances	B3020	Medium	62.00% Fair
	<i>Deficiencies:</i>	Faulty Material		
	<i>Causes:</i>	Surface Weathering		
	<i>Comments:</i>	Over cafeteria (old roof)		
	Horizontal Openings	B3060	Medium	62.00% Fair
	<i>Deficiencies:</i>	Faulty Material		
	<i>Causes:</i>	Surface Weathering		
	Overhead Exterior Enclosures	B3080	Medium	62.00% Fair
<i>Deficiencies:</i>	Efflorescence and Staining, Rusted Metal Finishes/Components			
<i>Causes:</i>	Insect Infestation, Moisture Intrusion			

Building Components

SUB-ASSEMBLY	COMPONENT	COMPONENT CODE	MAINTENANCE PRIORITY	CONDITION RATING
Interior Construction	Interior Partitions	C1010	Low	62.00% Fair
	Interior Windows	C1020	Low	62.00% Fair
	<i>Deficiencies:</i>	Other		
	<i>Causes:</i>	Material Condition, Security		
	<i>Comments:</i>	windows wired glass		
	Interior Doors	C1030	Medium	62.00% Fair
	<i>Deficiencies:</i>	Deficient Hardware/Operating Parts		
	<i>Causes:</i>	Material Condition		
	<i>Comments:</i>	many door closures failing		
	Interior Grilles and Gates	C1040	Low	62.00% Fair
Interior Finishes	Suspended Ceiling Construction	C1070	Low	30.00% Poor
	<i>Deficiencies:</i>	Broken T-Bar or Perimeter Track, Other		
	<i>Causes:</i>	Missing Securement, Need to Replace Components		
	<i>Comments:</i>	500 wing has old tile. Missing tiles where glue-on ceiling tile is used.		
	Wall Finishes	C2010	Low	62.00% Fair
<i>Deficiencies:</i>	Surface Appearance			
<i>Causes:</i>	Surface Damage			
<i>Comments:</i>	typical wear and aging			
Plumbing	Interior Fabrications	C2020	Low	90.00% Good
	Flooring	C2030	Low	62.00% Fair
	<i>Deficiencies:</i>	Stains, Discoloration		
	<i>Causes:</i>	Deterioration		
	<i>Comments:</i>	carpet at end of life		
	Ceiling Finishes	C2050	Low	90.00% Good
	Domestic Water Distribution	D2010	Low	30.00% Poor
	<i>Deficiencies:</i>	Other		
<i>Causes:</i>	Excessive Wear			
<i>Comments:</i>	Water heaters near end of useful life.			
Plumbing	Sanitary Drainage	D2020	Low	30.00% Poor
	<i>Deficiencies:</i>	Other		
	<i>Causes:</i>	Defective Traps		
	<i>Comments:</i>	Kitchen grease trap problematic.		

Building Components

SUB-ASSEMBLY	COMPONENT	COMPONENT CODE	MAINTENANCE PRIORITY	CONDITION RATING
Plumbing	Building Support Plumbing Systems	D2030	Low	90.00% Good
	General Service Compressed-Air	D2050	Low	90.00% Good
HVAC	Facility Fuel Systems	D3010	Low	90.00% Good
	Heating Systems	D3020	Low	30.00% Poor
	<i>Deficiencies:</i>	Excessive Heat Fluctuation, Insufficient Heat, System Inefficient		
	<i>Causes:</i>	Equipment Obsolescence, Other		
	<i>Comments:</i>	15 year units are 24 years old. Frequently not operating adequately.		
	Cooling Systems	D3030	Low	62.00% Fair
	<i>Deficiencies:</i>	Insufficient Air Flow		
	<i>Causes:</i>	Other		
	<i>Comments:</i>	Some areas of building do not have AC creating some controls/balancing issues		
	Facility HVAC Distribution Systems	D3050	Low	62.00% Fair
<i>Deficiencies:</i>	Insufficient Air Flow, System Inefficient			
<i>Causes:</i>	Equipment Obsolescence			
Ventilation	D3060	Low	0.00% Unsatisfactory	
<i>Deficiencies:</i>	Other			
<i>Causes:</i>	Equipment Obsolescence			
<i>Comments:</i>	Controls no longer work. No service available in WA state.			
Fire Protection	Fire Suppression	D4010	Low	90.00% Good
	Fire Protection Specialties	D4030	Low	90.00% Good
Electrical	Electrical Services and Distribution	D5020	Low	62.00% Fair
	<i>Deficiencies:</i>	Other		
	<i>Causes:</i>	Equipment Obsolescence		
	<i>Comments:</i>	due to age of equipment		
	General Purpose Electrical Power	D5030	Low	90.00% Good
	Lighting	D5040	Low	62.00% Fair
<i>Deficiencies:</i>	Uneven or Low light Levels			
<i>Causes:</i>	Mismatched Lights			
Communications	Data Communications	D6010	Low	90.00% Good

Building Components

SUB-ASSEMBLY	COMPONENT	COMPONENT CODE	MAINTENANCE PRIORITY	CONDITION RATING
Communications	Voice Communications	D6020	Low	90.00% Good
	Audio-Video Communications	D6030	Low	90.00% Good
	Distributed Communications and Monitoring	D6060	Low	90.00% Good
Electronic Safety and Security	Access Control and Intrusion Detection	D7010	Low	62.00% Fair
	<i>Deficiencies:</i>	Electronic Locks Not Functioning, Keypads Not Functioning		
	<i>Causes:</i>	Vandalism		
	Electronic Surveillance	D7030	Low	30.00% Poor
	<i>Deficiencies:</i>	Blind Zones , Sensors Not Working Correctly		
	<i>Causes:</i>	Insufficient Equipment		
	Detection and Alarm	D7050	Low	62.00% Fair
<i>Deficiencies:</i>	Signals Weak			
<i>Causes:</i>	Equipment Obsolescence, Wrong Equipment			
Integrated Automation	Integrated Automation Facility Controls	D8010	Medium	62.00% Fair
	<i>Deficiencies:</i>	System Not working to Capacity		
	<i>Causes:</i>	Equipment Obsolescence		
	<i>Comments:</i>	No service available locally. Controls are bad.		
Equipment	Commercial Equipment	E1030	Low	62.00% Fair
	<i>Deficiencies:</i>	Insufficient temperatures		
	<i>Causes:</i>	Physical Damage, Use Deterioration		
	Institutional Equipment	E1040	Low	30.00% Poor
	<i>Deficiencies:</i>	Code Non-compliance, Faulty Materials		
	<i>Causes:</i>	Equipment Deterioration, Equipment Obsolescence		
	Entertainment and Recreational Equipment	E1070	Low	62.00% Fair
	<i>Deficiencies:</i>	Other		
	<i>Causes:</i>	Equipment Deterioration, Equipment Obsolescence		
	<i>Comments:</i>	Maintained regularly, but old and difficult to repair		
Other Equipment	E1090	Low	62.00% Fair	
<i>Deficiencies:</i>	Other			
<i>Causes:</i>	Deterioration, Physical Damage			

Building Components

SUB-ASSEMBLY	COMPONENT	COMPONENT CODE	MAINTENANCE PRIORITY	CONDITION RATING
Equipment	<i>Comments:</i>	General abuse and wear.		
Furnishings	Fixed Furnishings	E2010	Low	62.00% Fair
	<i>Deficiencies:</i>	Surface Deterioration		
	<i>Causes:</i>	Deterioration		
	Movable Furnishings	E2050	Low	62.00% Fair
	<i>Deficiencies:</i>	Surface Deterioration		
	<i>Causes:</i>	Deterioration		



School Facilities and Organization
 INFORMATION AND CONDITION OF SCHOOLS
Detailed Condition Assessment by Building
Reporting Year 2024-2025

Medical Lake

52.74

Medical Lake Middle School - Main Building

Building Details

PROFILE TYPE	Middle/Junior High School - Single Story
NUMBER OF FLOORS	1
CHARACTERISTICS	Occupied
COMMENTS	2012 Addition included partial modernization to 27,151 SF of existing building.

Building Inventory

AREA YEAR BUILT	DISTRICT ASSIGNED AREA	GROSS BUILDING SQ FT	GROSS INSTRUCTIONAL SQ FT	SCAP RECOGNIZED SQ FT	ORIGINAL OCCUPANCY DATE	ORIGINAL BOARD ACCEPTANCE DATE
1973	Main Area	52,553	52,553	52,553		
2012	2012 Addition	43,055	43,055	43,055	8/27/2012	1/22/2013
Building Totals		95,608	95,608	95,608		

Building Components

SUB-ASSEMBLY	COMPONENT	COMPONENT CODE	MAINTENANCE PRIORITY	CONDITION RATING
Foundations	Standard Foundation	A1010	Low	90.00% Good
Slabs on Grade	Standard Slabs on Grade	A4010	Low	90.00% Good
Water and Gas Mitigation	Building Subdrainage	A6010	Low	90.00% Good
Superstructure	Roof Construction	B1020	Low	30.00% Poor
	<i>Deficiencies:</i>	Other		
	<i>Causes:</i>	Inadequate Insulation, Other		
	<i>Comments:</i>	Inadequate to hold snow loads, requires snow removal when snow over 6" deep is on roof.		
Exterior Vertical Enclosures	Exterior Walls	B2010	Low	30.00% Poor

Building Components

SUB-ASSEMBLY	COMPONENT	COMPONENT CODE	MAINTENANCE PRIORITY	CONDITION RATING	
Exterior Vertical Enclosures	<i>Deficiencies:</i>	Cracking, Peeling, Flaking, Efflorescence and Staining, Rusted Metal Finishes/Components			
	<i>Causes:</i>	Inadequate Insulation, Moisture Intrusion			
	Exterior Windows	B2020	Low	30.00% Poor	
	<i>Deficiencies:</i>	Deficient Hardware/Operating Parts			
	<i>Causes:</i>	Frame/Molding Condition, Material Condition, U-Value			
	Exterior Doors and Grilles	B2050	Low	62.00% Fair	
	<i>Deficiencies:</i>	Frame/Molding Warped			
	<i>Causes:</i>	Security, Wind Pressure			
	Exterior Louvers and Vents	B2070	Low	90.00% Good	
Exterior Horizontal Enclosures	Roofing	B3010	Low	0.00% Unsatisfactory	
	<i>Deficiencies:</i>	Faulty Material, Leaking			
	<i>Causes:</i>	Cracks, Tears, Holes, and Breaks, Surface Weathering			
	<i>Comments:</i>	No walk off matt at mechanical units, additional wear in traffic areas. Roof has webbing layer visible.			
	Roof Appurtenances	B3020	Low	62.00% Fair	
	<i>Deficiencies:</i>	Faulty Material, Leaking, Roof Drains Not Draining			
	<i>Causes:</i>	Cracks, Tears, Holes, and Breaks, Surface Weathering			
	Horizontal Openings	B3060	Low	62.00% Fair	
	<i>Deficiencies:</i>	Leaking			
	<i>Causes:</i>	Flashing Failure, Surface Weathering			
Overhead Exterior Enclosures	Overhead Exterior Enclosures	B3080	Low	62.00% Fair	
	<i>Deficiencies:</i>	Efflorescence and Staining, Warped/Delaminating Finishes			
	<i>Causes:</i>	Moisture Intrusion, Moisture Penetration, Surface Damage			
	Interior Construction	Interior Partitions	C1010	Low	0.00% Unsatisfactory
		<i>Deficiencies:</i>	Acoustical Transference, Cracks, Tears, Holes, Looseness, Damaged or Missing Materials		
		<i>Causes:</i>	Defective Material, Settlement		
<i>Comments:</i>		Operable walls fixed in place in remodel. Inadequate to support doors and not made to be permanent wall.			
Interior Windows	C1020	Low	62.00% Fair		
Interior Doors	C1030	Low	30.00% Poor		

Building Components

SUB-ASSEMBLY	COMPONENT	COMPONENT CODE	MAINTENANCE PRIORITY	CONDITION RATING
Interior Construction	<i>Deficiencies:</i>	Acoustical Transference, Deficient Hardware/Operating Parts, Frame/Molding Warped, Not ADA Compliant		
	<i>Causes:</i>	Frame/Molding Condition, Security, STC Rating		
	<i>Comments:</i>	Doors sag and hardware does not work because of walls supporting doors.		
	Interior Grilles and Gates	C1040	Low	62.00% Fair
	<i>Deficiencies:</i>	Faulty Material, Frame/Molding Warped		
	<i>Causes:</i>	Frame/Molding Condition, Material Condition		
	<i>Comments:</i>	Doors failing in original building due to wall construction.		
	Suspended Ceiling Construction	C1070	Low	62.00% Fair
	<i>Deficiencies:</i>	Acoustical Transference		
	<i>Causes:</i>	Missing Securement, Need to Replace Components		
<i>Comments:</i>	Deficiencies in original building			
Interior Finishes	Wall Finishes	C2010	Low	62.00% Fair
	<i>Deficiencies:</i>	Warped/Delaminating Finishes		
	<i>Causes:</i>	Defective Material		
	<i>Comments:</i>	Temporary walls were made permanent and are failing.		
	Interior Fabrications	C2020	Low	90.00% Good
	Flooring	C2030	Low	62.00% Fair
	<i>Deficiencies:</i>	Broken or Loose Tiles, Stains, Discoloration		
	<i>Causes:</i>	Deterioration, Settlement		
	Ceiling Finishes	C2050	Low	62.00% Fair
	<i>Deficiencies:</i>	Surface Appearance, Warped/Delaminating Finishes		
<i>Causes:</i>	Defective Material			
Plumbing	Domestic Water Distribution	D2010	Low	90.00% Good
	Sanitary Drainage	D2020	Low	62.00% Fair
	<i>Deficiencies:</i>	Other		
	<i>Causes:</i>	Other		
	<i>Comments:</i>	Sewer injection tank with pump gets clogged.		
Building Support Plumbing Systems	D2030	Low	90.00% Good	
HVAC	Facility Fuel Systems	D3010	Low	90.00% Good

Building Components

SUB-ASSEMBLY	COMPONENT	COMPONENT CODE	MAINTENANCE PRIORITY	CONDITION RATING
HVAC	Heating Systems	D3020	Low	30.00% Poor
	<i>Deficiencies:</i>	Insufficient Heat		
	<i>Causes:</i>	Equipment Obsolescence		
	Cooling Systems	D3030	Low	30.00% Poor
	<i>Deficiencies:</i>	Insufficient Cooling		
	<i>Causes:</i>	Equipment Obsolescence		
	Facility HVAC Distribution Systems	D3050	Low	62.00% Fair
	<i>Deficiencies:</i>	Insufficient Air Flow, System Inefficient, Uneven Zone Coverage		
	<i>Causes:</i>	Equipment Obsolescence		
	Ventilation	D3060	Low	62.00% Fair
<i>Deficiencies:</i>	Incomplete Coverage			
<i>Causes:</i>	Equipment Obsolescence			
Fire Protection	Fire Suppression	D4010	Low	90.00% Good
	Fire Protection Specialties	D4030	Low	90.00% Good
Electrical	Electrical Services and Distribution	D5020	Low	62.00% Fair
	<i>Deficiencies:</i>	Other		
	<i>Causes:</i>	Equipment Obsolescence		
	<i>Comments:</i>	System upgrading needed in original building.		
	General Purpose Electrical Power	D5030	Low	62.00% Fair
	<i>Deficiencies:</i>	Other		
	<i>Causes:</i>	Equipment Obsolescence		
	<i>Comments:</i>	Original building requires upgrading.		
	Lighting	D5040	Low	62.00% Fair
	<i>Deficiencies:</i>	Lights Slow to Illuminate, Uneven or Low light Levels		
<i>Causes:</i>	Bad Ballasts, Mismatched Lights, Other			
<i>Comments:</i>	hallogen light fixtures need replaced			
Communications	Data Communications	D6010	Low	90.00% Good
	Voice Communications	D6020	Low	90.00% Good
	Audio-Video Communications	D6030	Low	90.00% Good

Building Components

SUB-ASSEMBLY	COMPONENT	COMPONENT CODE	MAINTENANCE PRIORITY	CONDITION RATING
Communications	Distributed Communications and Monitoring	D6060	Low	90.00% Good
Electronic Safety and Security	Access Control and Intrusion Detection	D7010	Low	62.00% Fair
	<i>Deficiencies:</i>	Other		
	<i>Causes:</i>	Equipment Obsolescence		
	<i>Comments:</i>	Limited access controls, often malfunctions/broken		
	Electronic Surveillance	D7030	Low	30.00% Poor
	<i>Deficiencies:</i>	Blind Zones		
	<i>Causes:</i>	Insufficient Equipment		
	Detection and Alarm	D7050	Low	62.00% Fair
	<i>Deficiencies:</i>	Signals Weak		
	<i>Causes:</i>	Equipment Obsolescence		
Integrated Automation	Integrated Automation Facility Controls	D8010	Low	90.00% Good
Equipment	Commercial Equipment	E1030	Low	90.00% Good
	Institutional Equipment	E1040	Low	62.00% Fair
	<i>Deficiencies:</i>	Other		
	<i>Causes:</i>	Other		
	<i>Comments:</i>	aging, generally cosmetic		
	Entertainment and Recreational Equipment	E1070	Low	62.00% Fair
	<i>Deficiencies:</i>	Other		
	<i>Causes:</i>	Equipment Obsolescence, Other		
	<i>Comments:</i>	equipment is aging, serviced regularly		
	Other Equipment	E1090	Low	90.00% Good
Furnishings	Fixed Furnishings	E2010	Low	62.00% Fair
	<i>Deficiencies:</i>	Incorrect Application, Surface Deterioration		
	<i>Causes:</i>	Occupancy Changes, Operation Abuse or Vibrations		
	Movable Furnishings	E2050	Low	62.00% Fair
	<i>Deficiencies:</i>	Surface Deterioration		
	<i>Causes:</i>	Deterioration, Physical Damage		



School Facilities and Organization
 INFORMATION AND CONDITION OF SCHOOLS
Detailed Condition Assessment by Building
 Reporting Year 2024-2025

Medical Lake

72.01

Michael Anderson Elementary School - Main Building

Building Details

PROFILE TYPE	Elementary School - Single Story
NUMBER OF FLOORS	1
BOARD ACCEPTANCE DATE	3/24/2004
CHARACTERISTICS	Occupied
ANNUAL REVIEW COMPLETED BY	District

This building is required to comply with the Asset Preservation Program

REPORTING YEAR	APP YEAR	BUILDING CONDITION ASSESSMENT	ANNUAL REVIEW COMPLETED BY	BOARD REPORT PRESENT DATE
2024-2025	21	72.01	District	3/25/2025
2023-2024	20	72.29	Consultant	3/26/2024
2022-2023	19	77.77	District	3/28/2023
2021-2022	18	87.47	District	3/22/2022
2020-2021	17	88.42	District	3/23/2021
2019-2020	16	90.00	District	4/28/2020

The next certified BCA is due: 2030

Building Inventory

AREA YEAR BUILT	DISTRICT ASSIGNED AREA	GROSS BUILDING SQ FT	GROSS INSTRUCTIONAL SQ FT	SCAP RECOGNIZED SQ FT	ORIGINAL OCCUPANCY DATE	ORIGINAL BOARD ACCEPTANCE DATE
2002	Main Area	76,663	76,663	76,663	1/1/2004	3/24/2004
Building Totals		76,663	76,663	76,663		

Building Components

SUB-ASSEMBLY	COMPONENT	COMPONENT CODE	MAINTENANCE PRIORITY	CONDITION RATING
Foundations	Standard Foundation	A1010	Low	90.00% Good
Slabs on Grade	Standard Slabs on Grade	A4010	Low	90.00% Good
Water and Gas Mitigation	Building Subdrainage	A6010	Low	90.00% Good
Superstructure	Roof Construction	B1020	Low	90.00% Good
Exterior Vertical Enclosures	Exterior Walls	B2010	Low	90.00% Good

Building Components

SUB-ASSEMBLY	COMPONENT	COMPONENT CODE	MAINTENANCE PRIORITY	CONDITION RATING
Exterior Vertical Enclosures	Exterior Windows	B2020	Low	62.00% Fair
	<i>Deficiencies:</i>	Other		
	<i>Causes:</i>	Other		
	<i>Comments:</i>	Windows are fogged, seals are broken.		
	Exterior Doors and Grilles	B2050	Low	62.00% Fair
	<i>Deficiencies:</i>	Frame/Molding Warped		
	<i>Causes:</i>	Wind Pressure		
	<i>Comments:</i>	Some doors won't close due to imbalanced system. Doors damaged/warped from water intrusion.		
	Exterior Louvers and Vents	B2070	Low	90.00% Good
Exterior Horizontal Enclosures	Roofing	B3010	Low	62.00% Fair
	<i>Deficiencies:</i>	Leaking		
	<i>Causes:</i>	Cracks, Tears, Holes, and Breaks		
	<i>Comments:</i>	Leaking in gym.		
	Roof Appurtenances	B3020	Low	90.00% Good
	Horizontal Openings	B3060	Low	62.00% Fair
	<i>Deficiencies:</i>	Leaking		
	<i>Causes:</i>	Surface Weathering		
	Overhead Exterior Enclosures	B3080	Low	90.00% Good
Interior Construction	Interior Partitions	C1010	Low	90.00% Good
	Interior Windows	C1020	Low	62.00% Fair
	Interior Doors	C1030	Low	90.00% Good
	Interior Grilles and Gates	C1040	Low	62.00% Fair
	<i>Deficiencies:</i>	Frame/Molding Warped, Other		
	<i>Causes:</i>	Frame/Molding Condition		
	<i>Comments:</i>	Fire shutter at admin faulty. Stage operable wall difficult to open.		
	Raised Floor Construction	C1060	Low	90.00% Good
	Suspended Ceiling Construction	C1070	Low	90.00% Good
Interior Finishes	Wall Finishes	C2010	Low	90.00% Good
	Interior Fabrications	C2020	Low	90.00% Good
	Flooring	C2030	Low	62.00% Fair

Building Components

SUB-ASSEMBLY	COMPONENT	COMPONENT CODE	MAINTENANCE PRIORITY	CONDITION RATING
Interior Finishes	<i>Deficiencies:</i>	Broken or Loose Tiles, Stains, Discoloration		
	<i>Causes:</i>	Deterioration, Excessive Water, Settlement		
	<i>Comments:</i>	Damaged gym floor due to roof leak.		
	Ceiling Finishes	C2050	Low	90.00% Good
Plumbing	Domestic Water Distribution	D2010	Low	62.00% Fair
	<i>Deficiencies:</i>	Lack of Water Flow		
	<i>Causes:</i>	Other		
	<i>Comments:</i>	Variable water flow to some fixtures, cause not determinable.		
	Sanitary Drainage	D2020	Low	90.00% Good
	Building Support Plumbing Systems	D2030	Low	90.00% Good
	HVAC	Heating Systems	D3020	Low
<i>Deficiencies:</i>		Excessive Heat Fluctuation, Insufficient Air Flow, Uneven Zone Coverage		
<i>Causes:</i>		Equipment Obsolescence, Inadequate Refrigerant Levels		
Cooling Systems		D3030	Low	30.00% Poor
<i>Deficiencies:</i>		Excessive Cooling Fluctuation, Insufficient Cooling, System Inefficient, Uneven Zone Coverage		
<i>Causes:</i>		Equipment Obsolescence, Inadequate Refrigerant Levels		
Facility HVAC Distribution Systems		D3050	Low	62.00% Fair
<i>Deficiencies:</i>		System Inefficient, Uneven Zone Coverage		
<i>Causes:</i>		Equipment Obsolescence		
Ventilation		D3060	Low	62.00% Fair
<i>Deficiencies:</i>	Incomplete Coverage			
<i>Causes:</i>	Equipment Obsolescence			
Fire Protection	Fire Suppression	D4010	Low	62.00% Fair
	<i>Deficiencies:</i>	Other		
	<i>Causes:</i>	Poor Access		
	<i>Comments:</i>	challenge to repair		
Electrical	Fire Protection Specialties	D4030	Low	90.00% Good
	Electrical Services and Distribution	D5020	Low	90.00% Good
	General Purpose Electrical Power	D5030	Low	90.00% Good

Building Components

SUB-ASSEMBLY	COMPONENT	COMPONENT CODE	MAINTENANCE PRIORITY	CONDITION RATING
Electrical	Lighting	D5040	Low	90.00% Good
Communications	Data Communications	D6010	Low	90.00% Good
	Voice Communications	D6020	Low	90.00% Good
	Audio-Video Communications	D6030	Low	62.00% Fair
	<i>Deficiencies:</i>	Weak or Intermittent Signal		
	<i>Causes:</i>	Equipment Obsolescence		
	Distributed Communications and Monitoring	D6060	Low	62.00% Fair
	<i>Deficiencies:</i>	Weak or Intermittent Com		
<i>Causes:</i>	Equipment Obsolescence			
Electronic Safety and Security	Access Control and Intrusion Detection	D7010	Low	90.00% Good
	Electronic Surveillance	D7030	Low	62.00% Fair
	<i>Deficiencies:</i>	Blind Zones		
	<i>Causes:</i>	Insufficient Equipment		
Integrated Automation	Integrated Automation Facility Controls	D8010	Low	62.00% Fair
	<i>Deficiencies:</i>	System Not working to Capacity		
	<i>Causes:</i>	Equipment Obsolescence		
Equipment	Commercial Equipment	E1030	Low	62.00% Fair
	<i>Deficiencies:</i>	Other		
	<i>Causes:</i>	Age Deterioration		
	<i>Comments:</i>	no longer repairable, difficult/impossible to find parts		
	Institutional Equipment	E1040	Low	90.00% Good
	Entertainment and Recreational Equipment	E1070	Low	90.00% Good
	Other Equipment	E1090	Low	90.00% Good
Furnishings	Fixed Furnishings	E2010	Low	90.00% Good
	Movable Furnishings	E2050	Low	90.00% Good

Coversheet

Enrollment Projections, Impact Aid Report and Budget Plan Report ~ Chad Moss

Section: VI. Reports and Discussions
Item: C. Enrollment Projections, Impact Aid Report and Budget Plan Report ~
Chad Moss
Purpose: Discuss
Submitted by:
Related Material: Enrollment Flyer (3).pdf

ENROLLMENT

**Medical
LAKE**



**School
DISTRICT**

Overview

Below is the Full Time Equivalent or FTE of Medical Lake School District's current year as well as prior years. The district will use this data to help project future district enrollment.

Average Enrollment including ALE

School Year	Enrollment (FTE)
2017-2018	1,823.0
2018-2019	1,797.0
2019-2020	1,795.0
2020-2021	1,695.0
2021-2022	1,726.0
2022-2023	1,725.0
2023-2024	1,668.0
2024-2025 (Current March)	1,670.0

Coversheet

Assistant Principal Week ~ April 7-11, 2025

Section: VIII. Superintendent's Report
Item: A. Assistant Principal Week ~ April 7-11, 2025
Purpose: Discuss
Submitted by:
Related Material: Assistant Principal Week.jpeg

HAPPY ASSISTANT PRINCIPALS WEEK!

Thank you for your dedication
to our school and community.

Enjoy the spotlight this **#APWeek25!**

Powered by BoardOnTrack

Coversheet

Green Gate Lane Development

Section: VIII. Superintendent's Report
Item: B. Green Gate Lane Development
Purpose: Discuss
Submitted by:
Related Material: Notice of Application.pdf



Notice of Application

Date of Application:
12/20/2024

Date Application was Deemed Complete:
1/3/2025

Date of this Notice:
2/7/2025

Comment Due Date:
2/27/2025 2:00 p.m.

Date of Public Hearing:
2/27/2025 5:30 p.m.

File Number: LU 2024-025 PP PU CA

Review Types: Preliminary Plat, Planned Unit Development, and Critical Area

Proposal Description: Requesting preliminary plat approval of a 102-lot subdivision of a 31.2-acre parcel. Requesting the minimum lot size be reduced to 5,000 square feet with a minimum of a 50-foot width. The site contains five (5) wetlands. Requesting wetland buffer averaging.

Proposal Location: Parcel #14192.0002

Applicant: Tom Stirling/Syntier Engineering, 509-339-6187

Additional Required Reviews/Permits: Applicant has an approved forest practice permit from the Department of Natural Resources. A final plat application must be approved prior to the land being subdivided.

Environmental Review:
The City of Medical Lake has reviewed the proposal for probable adverse environmental impacts and is issuing a mitigated determination of non-significance (MDNS) for this project. The optional DNS process in WAC 197-11-350 (4) is being used. This may be your only opportunity to comment on the environmental impacts of the proposed project.

Date of DNS:
2/7/2025

Vicinity Map:



Direct Comments to:

Elisa Rodriguez
City Planner
erodriguez@medical-lake.org
Planning Department
124 S Lefevre Street
Medical Lake, WA 99022
509-565-5019
8:00-4:00 Monday - Friday

Public Hearing: The Planning Commission will hold a public hearing on Thursday, February 27, 2025, at 5:30 p.m. in person at the Medical Lake City Hall and virtually via Zoom to consider the application. A web link to the Zoom Meeting will be posted on the City’s website www.medical-lake.org with the meeting agenda. You are encouraged to attend. If you require special assistance, contact City Hall at 509-565-5000.

Public Comment: You may submit comments in writing to the City Planner from the time of this notice until 2:00 p.m. on February 27, 2025. In addition, you may speak and/or submit written comments at the Public Hearing.

All persons have the right to comment on the application, receive notice of and participate in any hearing, request a copy of the decision, and have the right to appeal.

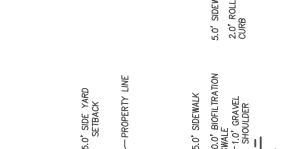
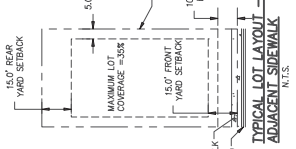
OVERALL PRELIMINARY PLAT
RING LAKE ESTATES PRELIMINARY PLAT
MEDICAL LAKE, WA



DESIGNED: TMS/ATC
DRAWN: JTC
CHECKED: SAS
DATE: FEBRUARY 4, 2025

DATE	REVISIONS	DESCRIPTION

SHEET NO.: **C2.0**
2 OF 8
JOB NO.: EMT-005



FINANCE & ADMINISTRATIVE SERVICES DIRECTOR CERTIFICATE

I HEREBY CERTIFY THAT ALL ASSESSMENTS AND OTHER FEES FOR WHICH THE PROPERTY MAY BE LIABLE HAVE BEEN PAID.

FINANCE & ADMINISTRATIVE
CITY OF MEDICAL LAKE

DATE

SITE DATA TABLE

TOTAL NUMBER OF LOTS = 102

LOT FRONTAGE - VARIES 50' (MIN)

LOT AREA - VARIES 5,000 SF - 9,940 SF

EXISTING ZONING: SINGLE FAMILY

PROPOSED ZONING: SINGLE FAMILY

TOTAL AREA = 31.26 ACRES

PROPOSED DENSITY = 3.40 UNITS PER ACRE

DOMESTIC WATER - CITY OF MEDICAL LAKE

SANITARY SEWER DISPOSAL - CITY OF MEDICAL LAKE

ROADS AREA = 145,207.5 SF

WETLAND AREA = 218,707.4 SF

FRONT YARD SETBACK = 15 FEET

INTERIOR SIDE YARD SETBACK = 5 FEET

CORNER SIDE YARD SETBACK = 10 FEET

REAR YARD SETBACK = 15 FEET

WETLANDS, BUFFERS, AND CRITICAL AREAS SHALL BE MITIGATED PER MLWC 17.10.060.A-17.10.060.D, 17.10.110.B, 17.10.140.D.2, AND 17.10.140.L.

LEGAL DESCRIPTION
15.24-111-151-000-000, CITY OF MEDICAL LAKE TRACTS LIND SOUTH AND EAST OF HIGHWAY 802, MEDICAL LAKE, WA

DATUM & BENCHMARK
DATUM: NAD 83
BENCHMARK: Based on UGSS brass cap monument R-3 set in 1930 on IAD 9 2.2483 m. Elevation listed by bond is 104.000 m. Station ID: 104416
NAD 83 (1 foot contour interval shown)

DEDICATION
I, THE UNDERSIGNED, HEREBY DEDICATE TO THE PUBLIC THE LAND SHOWN HEREIN AS THE PHASE 2 TRACTS OF THE RING LAKE ESTATES PRELIMINARY PLAT AND IN ACCORDANCE WITH THEIR DESIRES CAUSED THE LAND HEREIN TO BE PLATTED AND RECORDED IN THE PUBLIC RECORDS OF THE COUNTY OF SPOKANE AND DO HEREBY ADOPT THE SURVEY OF SAID PHASE 2 TRACTS OF THE RING LAKE ESTATES PRELIMINARY PLAT AS THE OFFICIAL SURVEY OF SAID TRACTS AND AS THE ONLY PARENT HAVING ANY INTEREST IN SAID TRACTS AND AS THE ONLY PERSONS HAVING ANY INTEREST IN SAID TRACTS DO HEREBY AUTHORIZE THE CITY OF MEDICAL LAKE TO MAKE SUCH DEDICATION AND TO TAKE SUCH ACTION AS MAY BE NECESSARY TO COMPLY WITH THE PROVISIONS OF THE PLAT ACT AND TO TAKE SUCH ACTION AS MAY BE NECESSARY TO COMPLY WITH THE PROVISIONS OF THE PLAT ACT AND TO TAKE SUCH ACTION AS MAY BE NECESSARY TO COMPLY WITH THE PROVISIONS OF THE PLAT ACT.

FINANCE & ADMINISTRATIVE SERVICES DIRECTOR

CITY OF MEDICAL LAKE

DATE

ACKNOWLEDGEMENTS

COUNTY OF SPOKANE
STATE OF WASHINGTON

ON THIS _____ DAY OF _____, 2024, BEFORE ME, _____, a Notary Public in and for the State of Washington, personally appeared _____, known to me to be the person whose name is subscribed to the foregoing instrument, and acknowledged to me that he executed the same for the purposes and consideration therein expressed.

PUBLIC WORKS DIRECTOR CERTIFICATE
APPROVED AS TO SURVEY DATA, EASEMENTS, IMPROVEMENTS AND IMPROVEMENTS HAVE BEEN SATISFACTORILY CONSTRUCTED OR CONSTRUCTION HAS BEEN INITIATED FOR CONSTRUCTION OF DEFERRED IMPROVEMENTS.

EXAMINED AND APPROVED THIS _____ DAY OF _____, 2024.

TREASURER'S CERTIFICATE
I HEREBY CERTIFY THAT TAXES AND ASSESSMENTS ON PROPERTY SHOWN HEREIN HAVE BEEN PAID FOR 2024 AND PRECEDING YEARS.

THIS _____ DAY OF _____, 2024
SPOKANE COUNTY TREASURER

ASSESSOR'S CERTIFICATE
I HEREBY CERTIFY THAT THIS PROPERTY IS ASSESSED TO:

ACCORDING TO THE CURRENT TAX ROLLS.
SPOKANE COUNTY ASSESSOR

DATE