



**WOODCRAFT  
RANGERS**

— SINCE 1922 —



## our mission

guiding young people  
as they explore pathways  
to purposeful lives



guiando a los jóvenes  
mientras exploran caminos  
hacia vidas con propósito



指導在學學生探索  
有目標的人生





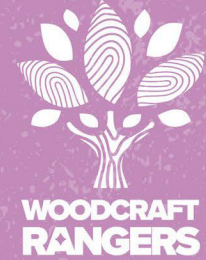


## OUR PHILOSOPHY

Through the fourfold Woodcraft Way, a precursor to the whole child development model, a young person develops an authentic and holistic sense of self through the cultivation of *body*, *mind*, *spirit* and *service*.

Believing that maturity, not scholarship, is the first aim of education, the Woodcraft Way builds character and equips youth with strength and resiliency (body), new skills (mind), deeper understanding of their place in the world (spirit), and greater commitment to their community (service).

The Woodcraft Way encourages individuals to find, test, and explore their strengths in the company of friends and committed guides, who provides support and a sense of belonging so that they may grow confidently in many directions.



## our values

we are explorers

we are inclusive

we are reflective

we are authentic

we are committed

we are playful

we are resilient



CELEBRATING  
**100** years!

**WOODCRAFT  
RANGERS**

**Deeply Rooted. Growing Strong.**

## *a century of service*

Woodcraft Rangers has been blazing trails for generations of young Angelenos and is currently celebrating a century of service to the young people of Los Angeles County! The longevity of the institution is remarkable, as is the breadth and depth of its impact.

This translates to *a hundred years of youth programs*, including outdoor education since 1922 and afterschool and summer day camps since the 1990s. Woodcraft has always held steadfast to its core values of access and inclusion, truly unique for an agency of its tenure.





# today...

**180**

days a year in  
Afterschool  
Programming

**4,000**

youth in summer  
programs

**20,000**

Youth served annually



**WOODCRAFT  
RANGERS**

SINCE 1922

**1,000**

STAFF MEMBERS

**110+**

AFTERSCHOOL SITES

 **94%**

of Middle and High Schoolers grew  
their SEL skills in one year of WR program

 **99%**

of Woodcraft Parents were Satisfied or  
Extremely Satisfied with Program Design

**100** YEARS OF  
youth development

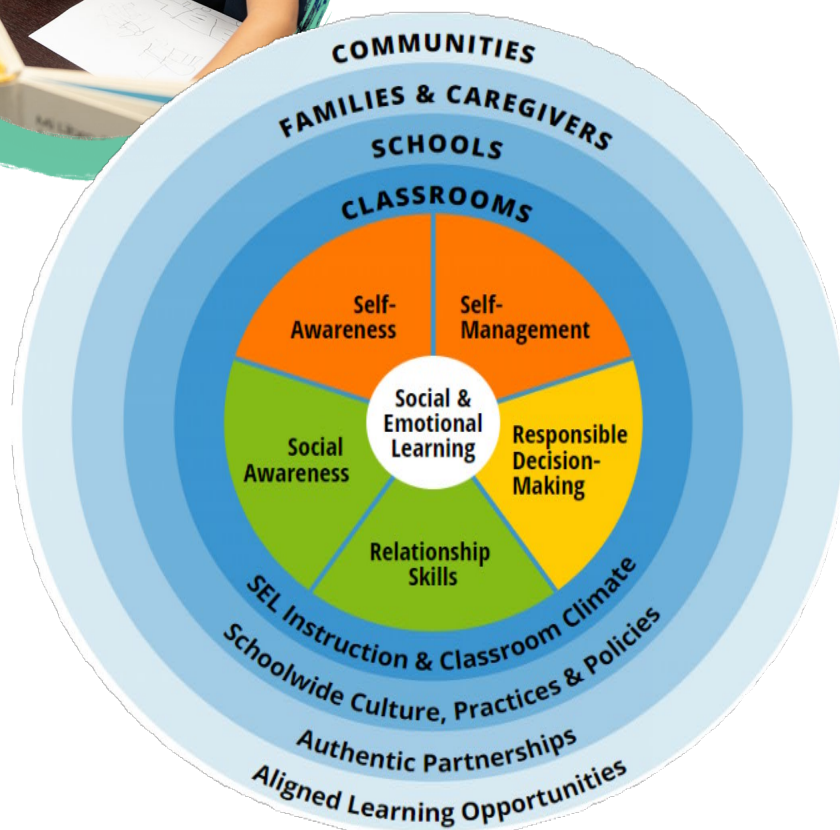
**6** MILLION  
mentorship hours  
provided annually

**40**

years of  
Afterschool  
Programs

**49**

schools served  
through Summer  
Day Camp



## A WHOLE-CHILD APPROACH: *a focus on social-emotional learning*

Students today have many challenges to overcome. Beyond learning loss and social isolation, the pandemic exacerbated the mental health crisis and widened racial and economic disparities. Children and youth from low-income communities are experiencing high frequencies of stress, anxiety, trauma, grief, and loss.

From the start, Woodcraft Rangers has been deeply committed to supporting the social, emotional, physical and academic needs and interests of every student.

Programs are designed through a culturally-inclusive, trauma-informed lens, and integrate a whole-child development approach. Activities are aligned to CASEL (Collaborative for Academic, Social and Emotional Learning), which measures progress in 5 core competencies: self-management, self-awareness, social awareness, relationship skills and responsible decision-making.

Woodcraft Rangers partners with TK-12 schools to design an integrated system of supports. Our programs are aimed at learning loss mitigation, family engagement, and creating a positive school culture that rebuilds trust and healthy connections between students and adults. Together we can help children recover and thrive!







## our programs

### EXPANDED LEARNING

TK-12 before and after school enrichment that can be offered as a full expanded learning program or as individual specialty enrichment clubs.

### SCHOOL DAY SUPPORTS

Academic tutoring, visual arts, recess support and specialty enrichment that enhance the school day.

### SUMMER/SCHOOL BREAK CAMPS

Student learning continues during intercessional days through a variety of enrichment experiences, including field trips.

### OUTDOOR EDUCATION

Local day hikes and excursions, overnight retreats, and youth and family camps at our year-round camp location at Mountain Center near Idyllwild.







♦ program

# EXPANDED LEARNING

In Woodcraft afterschool programs, students have access to over 100 different enrichment clubs, enabling them to explore personal interests and develop new skills. Clubs are organized into major learning pathways: arts & media, dual-language enrichment, egalitarian sports, health & wellness, STEM, and youth leadership.

Each school site has a dedicated site coordinator who curates activities based on student interest, community needs, and school goals. Activities run in 6-week cycles, allowing for interests that grow and change as students do. Staff are recruited intentionally from the same communities they serve to ensure cultural relevancy and representation. All staff are trained in the elements of youth development, positive behavior management, trauma-informed care, activity planning and inclusion best practices. Woodcraft staff are also trained and supported in their enrichment content areas and maintain a 1:10 ratio for TK/K students and 1:20 for grades 1-12.

Woodcraft Ranger aligns all expanded learning programs to the California Department of Education Expanded Learning Divisions Quality Standards and has decades of experience and an impeccable track record of compliance managing state and federal grants.

Afterschool programs typically take place from 2:30 to 6:00 p.m. and include a healthy snack, fitness, and homework help. Before school programs are also available.

*Possible funding sources: ASES, 21<sup>st</sup> C; ELO; ESSER*







# SIGNATURE EVENTS

Each year Woodcraft Rangers hosts four agency-wide events to give students from across the county to interact through fun and friendly competition. These culminating events also provide peers, families and the public with opportunities to gather and celebrate Woodcraft students.

**RANGER GAMES** (December): Ranger Games is a full day of sports to showcase student talent and foster team spirit among our athletic participants. Ranger Games is akin to the Woodcraft Rangers Olympics, featuring tournaments and healthy competition in a variety of sports offered during Woodcraft programs year-round.

**SCHOLAR BOWL** (Spring): Scholar Bowl is a day of friendly but fierce academic competition including a spelling bee, robotics and cyber security.

**SPIRIT JAM** (Spring): At Spirit Jam, dancers across all genres maximize their performance experience by competing against regionally-qualifying teams from throughout the agency. More than 600 dancers and 1,500+ family members gather at this spirited event!

**WOW, WAYS OF WOODCRAFT** (Summer): WOW is the agency's annual showcase event at the culmination of the school year and features a display of student artwork, performances, and games from all learning pathways (arts & media, health & wellness, and STEM).



✦ expanded learning

# SUMMER/SCHOOL BREAKS DAY CAMPS

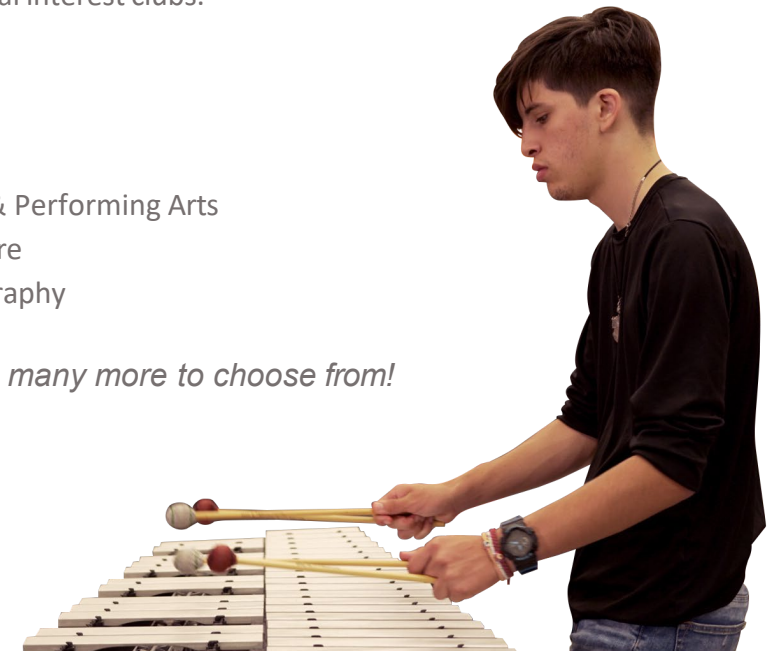
Woodcraft day camps allow students to stay on track academically during vacation periods, while offering well-balanced experiences driven by camper interests. Activities span sports, STEM, and arts and may include field trips and specialty clubs like skateboarding (Sk8), stop-motion animation, robotics, and more. Day camps also enable working parents to maintain employment, knowing their children are safe and engages in positive activities while out of school.

Day camps are scheduled on school sites during school breaks, can be half or full days (up to 10 hours), and may be eligible for ELO-P or 21st Century supplemental funding.

Woodcraft day camps offer over 100 special interest clubs.  
Popular options include:

- Academic Support
- Animation
- Chorus
- Computer Coding
- Graphic Design
- Gardening
- Yoga
- Visual & Performing Arts
- Sculpture
- Photography

*... with many more to choose from!*





# Older Youth Engagement Focuses areas



## Graduation

- Credit Recovery
- Community Service
- Tutoring/HW
- Test Prep

## College Access

- FAFSA
- Campus Tour
- Scholarships
- Opportunities for Grants

## Life Skills

- Financial Literacy
- Goal Setting
- Time Management
- Cyber Patriot
- Culinary Arts
- Drivers Education

## Workforce

- Internships
- Externships
- Career Development Workshops
- WR Leadership Academy
- Resume Building
- Mock Interviews

## Civic Engagement

- Advocacy
- Volunteerism
- Service Learning
- Community Beautification
- Youth Advisory Board

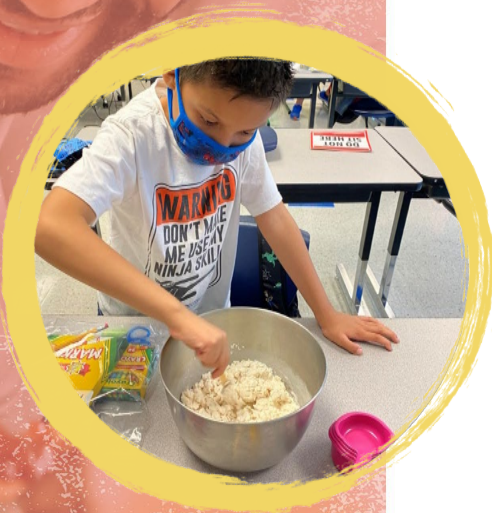


# FAMILY ENGAGEMENT

Research shows that when parent and families are involved in their child's education, it can improve test scores, attendance, social skills, relationships, behavior, and a child's feelings about themselves and their school.

**Woodcraft offers a variety of family engagement opportunities throughout the year that strengthen student and family connection and reinforce positive school culture. These include:**

- Evening and weekend events focused on STEAM, literacy and/or wellness.
- Culture of Cooking enrichment club in partnership with One Potato meal delivery service.
- Cultural and holiday celebrations that invite families to share their traditions with others.
- Talent shows and spelling bees to support and celebrate their children's skills and talents.
- Academic competitions including robotics, cybersecurity, science and math Olympiads.



*Possible funding sources: 21<sup>st</sup> C; ELO; ESSER*





# SPECIALTY ENRICHMENT

Woodcraft Rangers offers a variety of specialty enrichment offerings in arts, sports, STEM, leadership, and outdoor education. Specialty enrichment programs are typically offered up to 90 minutes a day for 3-5 days a week and include culminating activities such as performances, competitions and tournaments.

Enrichment clubs are designed for up to 20 participants in grades 1-12, and 10 participants in grades TK/K. Specialty enrichment can be provided at a single site or can rotate across a network of sites within a district.

Specialty enrichment can also take place on Saturdays, a perfect time for sports leagues and tournaments or academies for students who want to explore an enrichment area in depth.

A sampling of our customizable specialty enrichment offerings:

## STEM

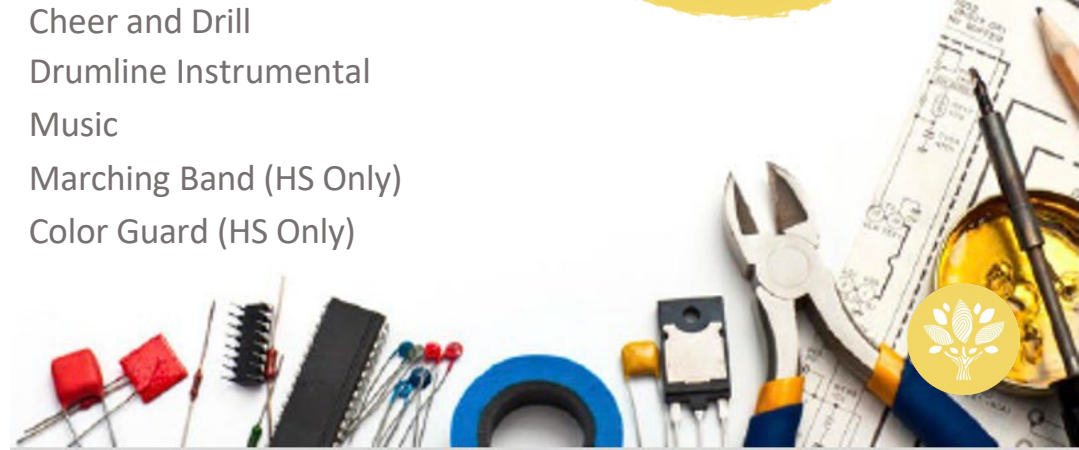
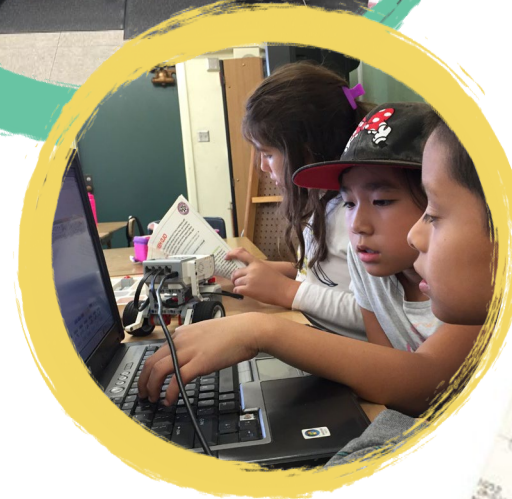
Robotics  
Gardening  
STEManiacs  
Jr. Rangers: STEAM (TK-2)

## SPORTS/GAMES

Rugby Futsal  
Spike Ball  
E-Sports  
Strategy Games  
Weight Training (HS Only)

## ARTS

Baile Folklórico  
Mariachi  
Teatro Fogata (*theatre*)  
Specialty Dance  
*Hip Hop, Armenian, Chinese Lantern*  
Cheer and Drill  
Drumline Instrumental  
Music  
Marching Band (HS Only)  
Color Guard (HS Only)





# SPORTS LEAGUES & TOURNAMENTS

Woodcraft offers a variety of independent sports leagues. Participants are invited to site-specific and regional tournaments in basketball, soccer, flag football, volleyball, basketball, soccer, rugby, and softball. Qualifying teams also participate in two annual public culmination events; Ranger Games and WOW (Ways of Woodcraft). Both events feature friendly competition with banners, trophies, or medals awarded to first and second place winning teams.

Participating in active sports in childhood promote active lifestyles into adulthood, leading to better health and longer lives. Physical activity reduces the likelihood of childhood obesity, strengthens bones, and helps maintain a healthy heart and circulatory system. Research also shows that children and youth participating in organized sports feel more skilled, capable, and confident, and demonstrate improved cognitive functioning and greater academic performance.

Woodcraft sports leagues meet afterschool 3 days/week for 6 weeks. They take place at multiple school sites and typically culminate in a tournament or community event. Tournaments can also be offered as a single day event with options for additional activities to engage the whole family in a festive community day!

*Possible funding sources: ASES, 21<sup>st</sup> C Supplemental; ELO-P*





♦ school day support

# SCHOOL DAY

## ENRICHMENT, ACADEMIC & RECESS

### ENRICHMENT

Woodcraft Rangers specialty enrichment can be adapted to the school day (see Specialty Enrichment slide).

### VISUAL ARTS

Woodcraft has developed a year's worth of scaffolded activities that align with California Arts Standards for elementary school. A Woodcraft teaching artist can deliver up to 4 classes a day, or lessons can be purchased as curriculum to support new visual arts teachers.

### 1:1 & SMALL GROUP TUTORING

Woodcraft can provide evidence-based individualized tutoring with program design and monitoring by credentialed educators. Customizable for school day or afterschool.

### RECESS

Woodcraft can provide supervision and structured playground activities to make recess a fun, positive experience that builds physical and social skills. Scaffolded activities align with California Physical Education, and Psychomotor Standards for elementary schools.

A Woodcraft teaching artist can deliver up to 4 classes a day or curriculum can be purchased to support new PE teachers.



♦ outdoor education

# ECO WARRIORS

EcoWarriors, an environmental youth leadership retreat, reconnects youth with the land of our ancestors and empowers them to imagine innovative solutions to increasingly perilous environmental challenges.

The curriculum centers the relationship between people and planet. Activities include guided meditations and hikes, foraging, identifying plant species, and exploring science and engineering concepts such as testing and analyzing soil, water, and composting. In alignment with the Woodcraft Way of promoting whole child development through body, mind, spirit and service, each day also encourages youth to reflect, creatively express and discuss ideas, shaping their environmental values, and empowering them to advocate for a more sustainable, healthy and just future.

EcoWarriors is designed as a 3-day/2-night retreat for middle and high school youth and may be offered during the school year or over school breaks.



*Possible funding sources: 21st C Supplemental; ELO-P*





# OUTDOOR EDUCATION

At Woodcraft Rangers, we believe in the healing power of nature. Our outdoor education programs offer outdoor and nature experiences on school campuses, at nearby parks and nature spaces, and at Camp Woodcraft, nestled in the San Jacinto Mountains near Idyllwild, CA. Camp Woodcraft boasts 100 pristine acres and trained and experienced staff who create a safe and adventurous “home away from home” for campers.



## WEEKEND EXCURSIONS/ FIELD TRIPS

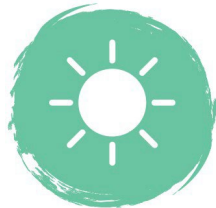
From local and state parks to nature preserves and hiking trails, weekend excursions offer up to 50 students an opportunity to venture beyond their local neighborhoods to explore nature, animals, and ecology. Typically offered once a month at a different location each month and guided by Woodcraft outdoor educators and naturalists.



## ECO WARRIORS

An environmental youth leadership retreat over 3 days and 2 nights, where middle school and high school youth identify environmental challenges, discuss innovative solutions to caring for our planet, shape their environmental values and practice civic engagement.

For up to 160 campers during the week, over a weekend, or during summer and school breaks.



## CAMP WOODCRAFT

Classic Camp Woodcraft favorites including rock climbing, archery, campfire songs, arts & crafts, ropes course, s'mores and much more. Camp Woodcraft can be offered exclusively for a group of up to 160 campers over 6 days and 5 nights during summer or school breaks.



## FAMILY CAMP

Family Camp, offered over a 3-day weekend in Mountain Center, near Idyllwild, offers families a unique way to bond with one another and other families in a beautiful setting. Activities are customized for a range of skill levels and abilities. Ideal for families with younger children.



# PROFESSIONAL DEVELOPMENT



Woodcraft Rangers offers a variety of professional development modules to support expanded learning professionals at all levels. Sessions are available for LEA or CBO staff to ensure coherence and fidelity of program implementation and delivery across programs

Building from decades of experience, professional develop covers a variety of youth development themes as well as best practices in all facets of running a quality Expanded Learning Program. All modules are aligned to the California Department of Education Expanded Learning Division's Quality Standards.

Generally, professional development sessions are designed to be delivered in person for up to 35 participants per facilitator though may be adapted virtually upon request. The program is customizable and available as a full-year training program or as a complement in areas where a program would like more depth.

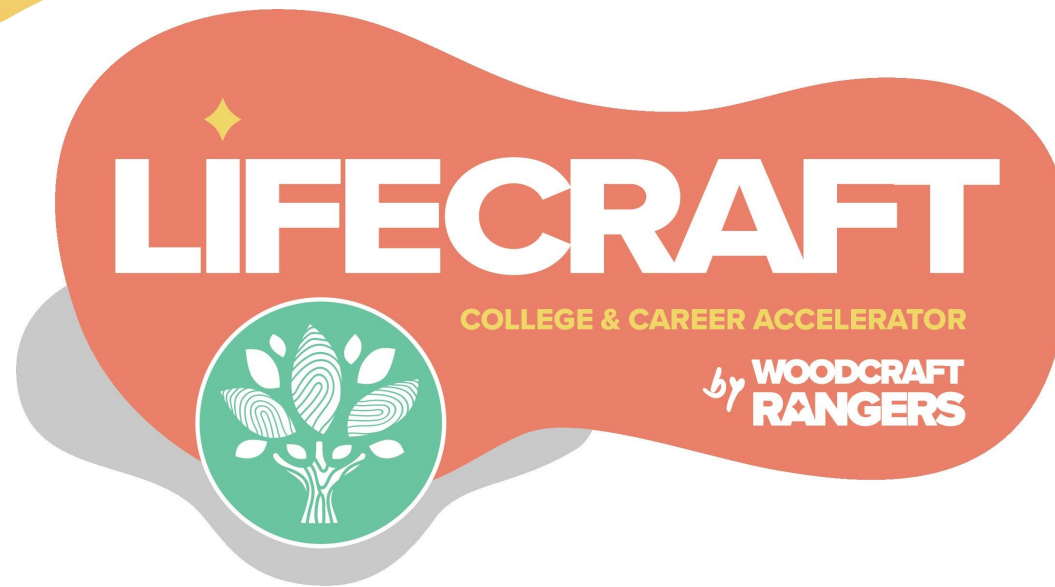
*Possible funding sources: ASES, 21st C Supplemental; ELO-P*

Our customizable Professional Development offerings cover a range of categories and topics, including:

- Leadership & Mentoring
- Behavior Management and Teambuilding
- Social Emotional Learning
- Overall Program Development
- Planning Activities for Specific Populations
- Academic Alignment
- Communication with Stakeholders
- Child Development and Age-Appropriate Activity Planning







The Lifecraft Program at Woodcraft Rangers is an exclusive initiative dedicated to supporting the growth and aspirations of our valued staff members. Designed with a commitment to mirroring the empowerment we foster in students, Lifecraft provides a comprehensive array of resources and guidance tailored for our staff's personal and professional development.

From academic planning, major selection, and setting goals to navigating admissions, applications, and deadlines, Lifecraft offers a roadmap for success. Demystifying the application process, including essays, scholarships, and financial aid, is complemented by connecting participants with internships, service-learning opportunities, and various student-centric programs. Collaborating with counselors, organizing campus tours, and ongoing support through progress check-ins ensure continuous assistance even after enrollment, making Lifecraft a vital tool for our staff's growth and success.



# WOODCRAFT LEADERSHIP

Woodcraft Rangers is led by a talented and experienced executive and leadership team guiding overall quality and operations of the organization and ensuring a positive and supportive work culture:



**JULEE BROOKS**

**CHIEF EXECUTIVE OFFICER**

Over 20 years of experience leading youth- focused agencies through transformational change. 2021 finalist for “CEO of the Year” for the Los Angeles Business Journal’s 2021 Women’s Leadership Awards, recognized her leadership at Woodcraft as well as in local, state and federal youth advocacy.



**CELINA SALINAS**

**CHIEF OPERATING OFFICER**

14 years with Woodcraft serving various roles and overseeing operations and compliance since 2012. Celina has served on statewide committees including the CDE Expanded Learning Workforce Task Force.



**DARLINGTON AHAIWE**

**CHIEF FINANCE OFFICER**

14 years with Woodcraft with expertise in accounting, management of state and federal grants, and organizational fiscal strategy. Darlington is an MBA graduate from Pepperdine Graziadio School of Business.



**DANNY SALAS**

**CHIEF PROGRAMS OFFICER**

A proud alumnus of afterschool programs, Danny has served youth organizations since 2003 and Woodcraft for over 10 years where he leads the afterschool program team that operates over 90 sites throughout LA County. Danny has been recognized as a leader in the afterschool field for continuous quality improvement (CQI).



**HELEN SANTOS**

**DIRECTOR OF OUTDOOR EDUCATION PROGRAMS**

14 years as Camp Director of Camp Woodcraft and has been an accredited Camp Director for 8 years. Helen Serves the outdoor ed. field in a variety of leadership capacities, including on the national Diversity, Equity and Inclusion Advisory Committee of the American Camp Association.



**VERONICA GRANADOS**

**DIRECTOR OF LEARNING AND DEVELOPMENT**

Nearly 2 decades of experience in afterschool, now leads design of enrichment programs and professional development opportunities and serves on the leadership committee for the national afterschool BOOST Collaborative conference.





# INFRASTRUCTURE

## PROGRAM MANAGEMENT

Program directors ensure operational excellence, high program quality and cultural and community relevancy. Program managers oversee school regions to ensure high program quality and grant compliance, provide coaching, and liaise with district personnel.

## SITE COORDINATOR

Provides on-site supervision, including student record management, program plans, and regular meetings with school leadership to ensure program goal alignment.

## CLUB LEADERS

Serve as youth mentors, 20:1 ratio for grades 1-12. Lead enrichment programs according to specialty and in 6-week rotations.

## LEARNING DEPARTMENT

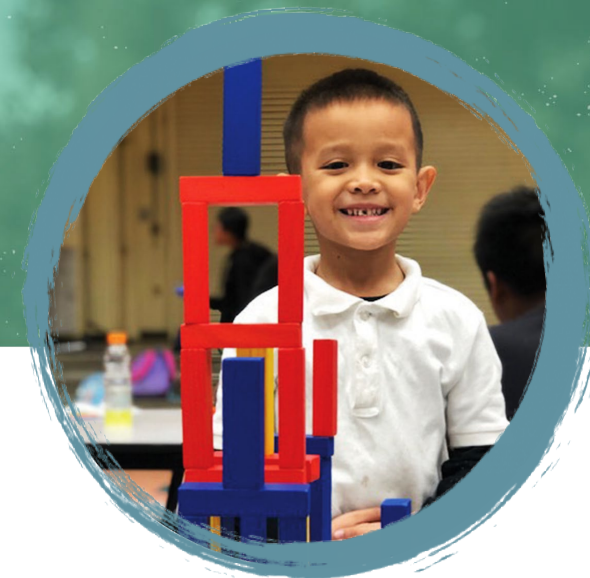
Oversee and monitor program content and quality through assessment and evaluation. Develop curricula, manage robust activity library, and facilitate holistic professional development framework.

## FINANCE TEAM

Ensure accurate accounting, reporting, fiscal compliance, allocation tracking, and internal controls. Manage invoicing and liaise with business development and CDE.

## HUMAN RESOURCES TEAM

Supports recruitment, on-boarding and personnel issues.



## COMPLIANCE TEAM

Provides oversight and grant compliance in accordance with Federal Program Monitoring, CDE and LACOE standards. Liaises for site visits.

## DATA & EVALUATION TEAM

Tracks student attendance, snack and meal records, and works directly with CDE. Woodcraft's proprietary online attendance tracking system delivers real-time data on individual club performance, retention analysis, and average daily attendance.





# WHY WOODCRAFT?



## COMMUNITY TRUST

101 years of service to LA youth, including 30 years of providing quality afterschool programs and managing public grants in partnership with local districts. Staff are recruited from communities served and 40% are program alumni.

## FAMILY ENGAGEMENT

Parents are treated as partners. Specialty programs including events and BIRCH are specifically designed to engage parents while supporting positive school culture.

## YOUTH-LED

**We value student voices.**

Students are active participants in program design and activities are aligned with school and program goals.

## SEL/WHOLE-CHILD APPROACH

Through the Woodcraft Way, young people develop in body, mind, spirit and service with a focus on social and emotional learning.

## OUTDOOR EDUCATION

Woodcraft Rangers has been offering outdoor and nature experiences for over 100 years. We believe in the healing power of nature to help individuals reflect and reconnect after such a difficult time.

## SCHOOL DAY ALIGNMENT




Programs include school day supports, such as academic intervention, and small group tutoring, arts and STEM enrichment, recess support, afterschool, evening and weekend programs to ensure a holistic approach aligned to each school's goals.

## SOLID OUTCOMES

All programs are evaluated in key areas, including program quality, design, academic achievement, and student and parent satisfaction. Woodcraft's deep listening practices facilitate continuous quality improvement.







*We'd love to  
partner with you!*

## CONTACT US

**Julee Brooks**

CHIEF EXECUTIVE OFFICER

[jbrooks@woodcrafrangers.org](mailto:jbrooks@woodcrafrangers.org)





**WOODCRAFT  
RANGERS**

— SINCE 1922 —

**340 E 2nd St #200 Los Angeles, CA 90012**

**[www.woodcraftrangers.org](http://www.woodcraftrangers.org) @woodcraftrangers**