



# SY 2022-2023 Enrollment Update

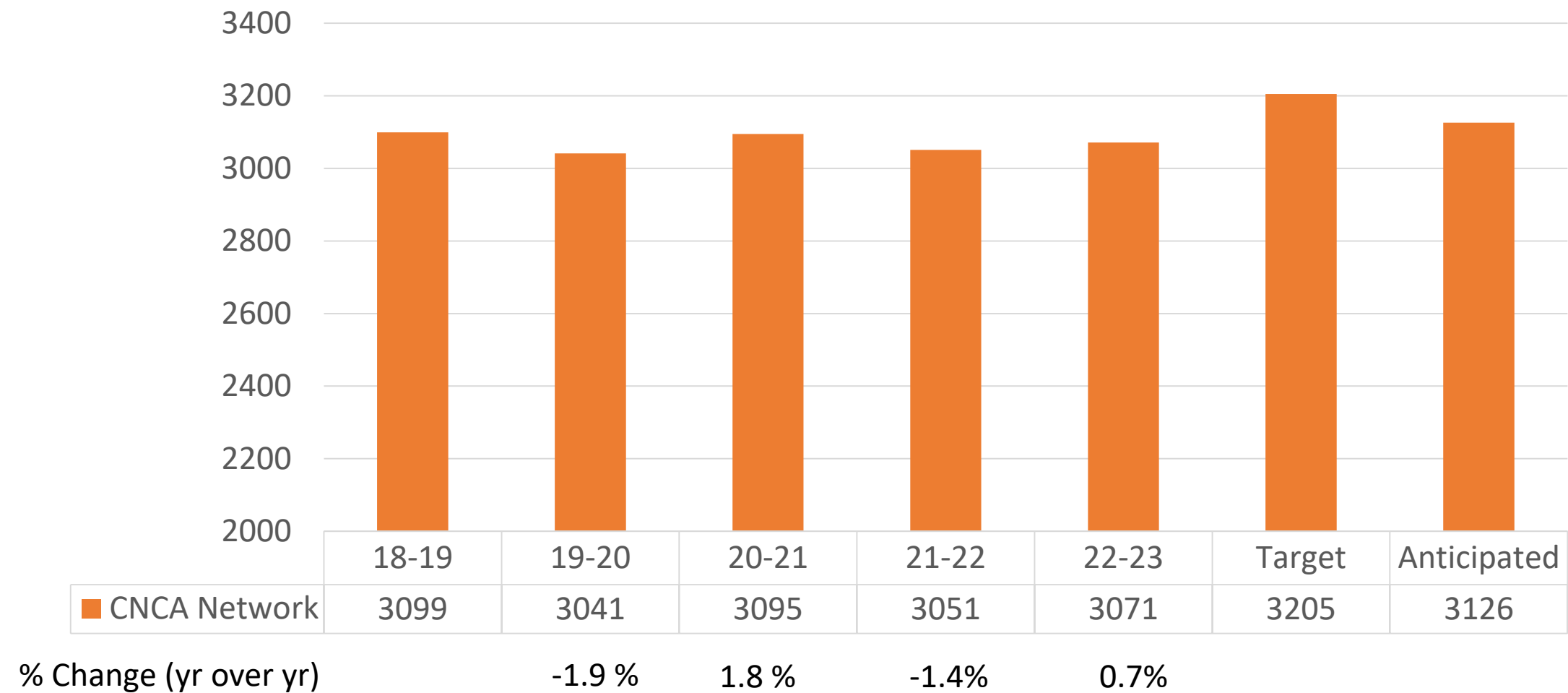
## *August Board Meeting*

**20** años | Camino  
Nuevo  
Charter  
Academy

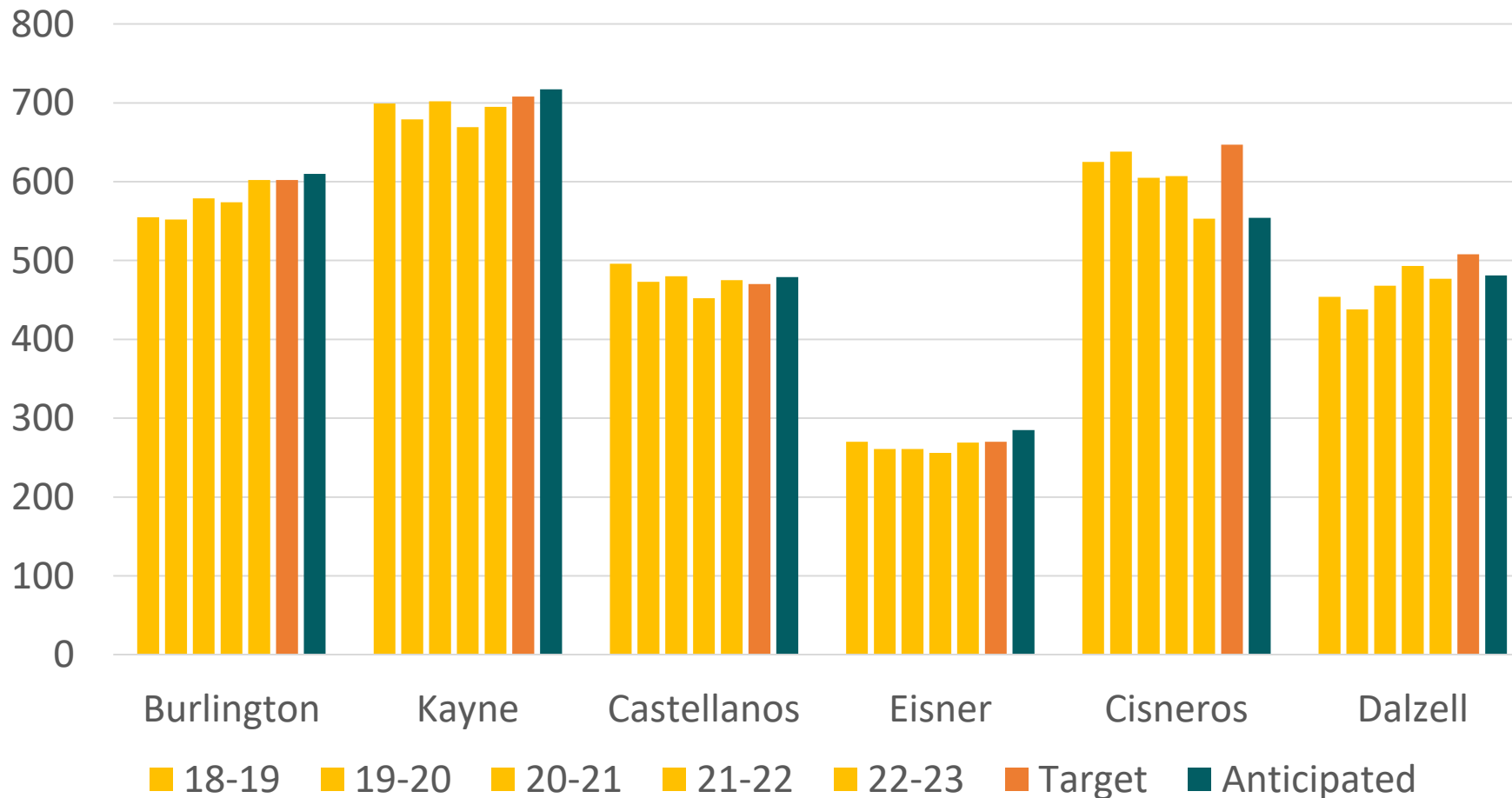


**Crystal Day**  
*Director of Strategic Enrollment*

# CNCA Network | First Day Enrollment – 5 year history



# School Site | First Day Enrollment – 5 year history

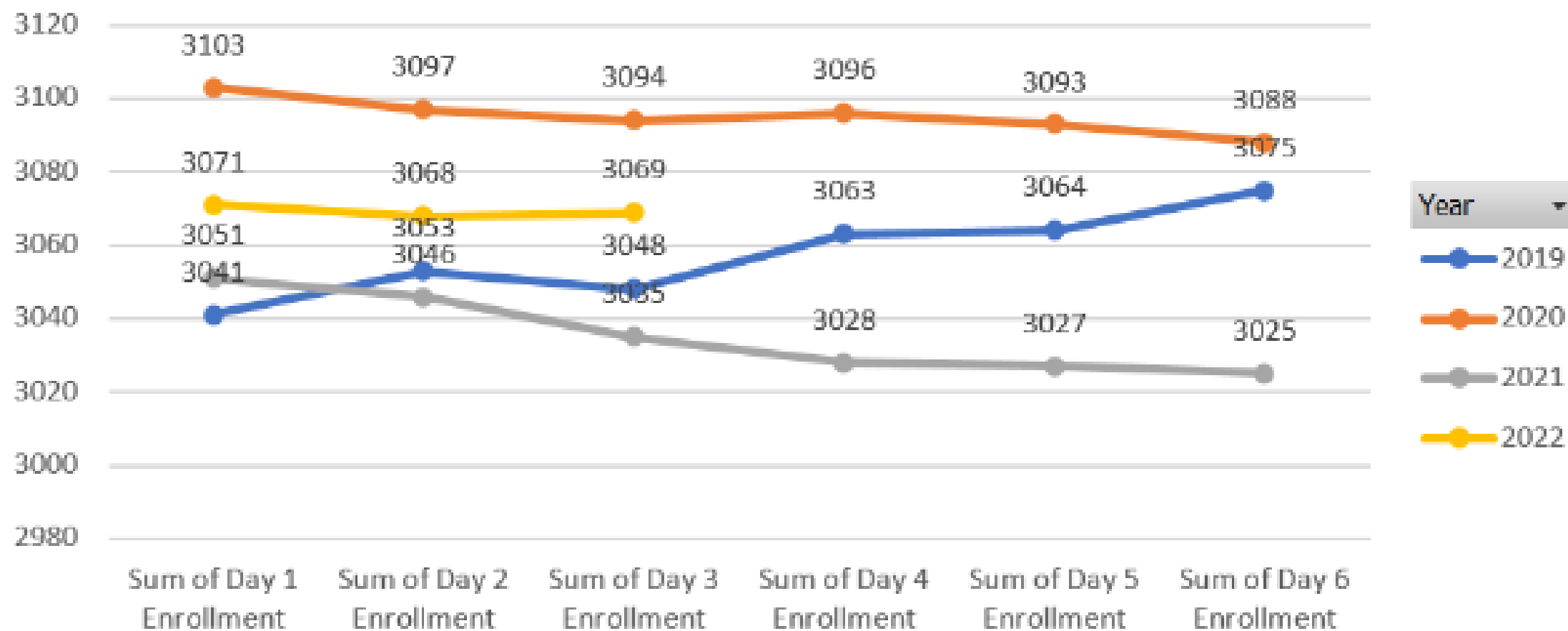


## % Enrolled to Target

- Burlington 100%
- Castellanos 100%
- Eisner 100%
- Kayne 98%
- Dalzell 96%
- Cisneros 86%
- CNCA 96%

Campus ▾

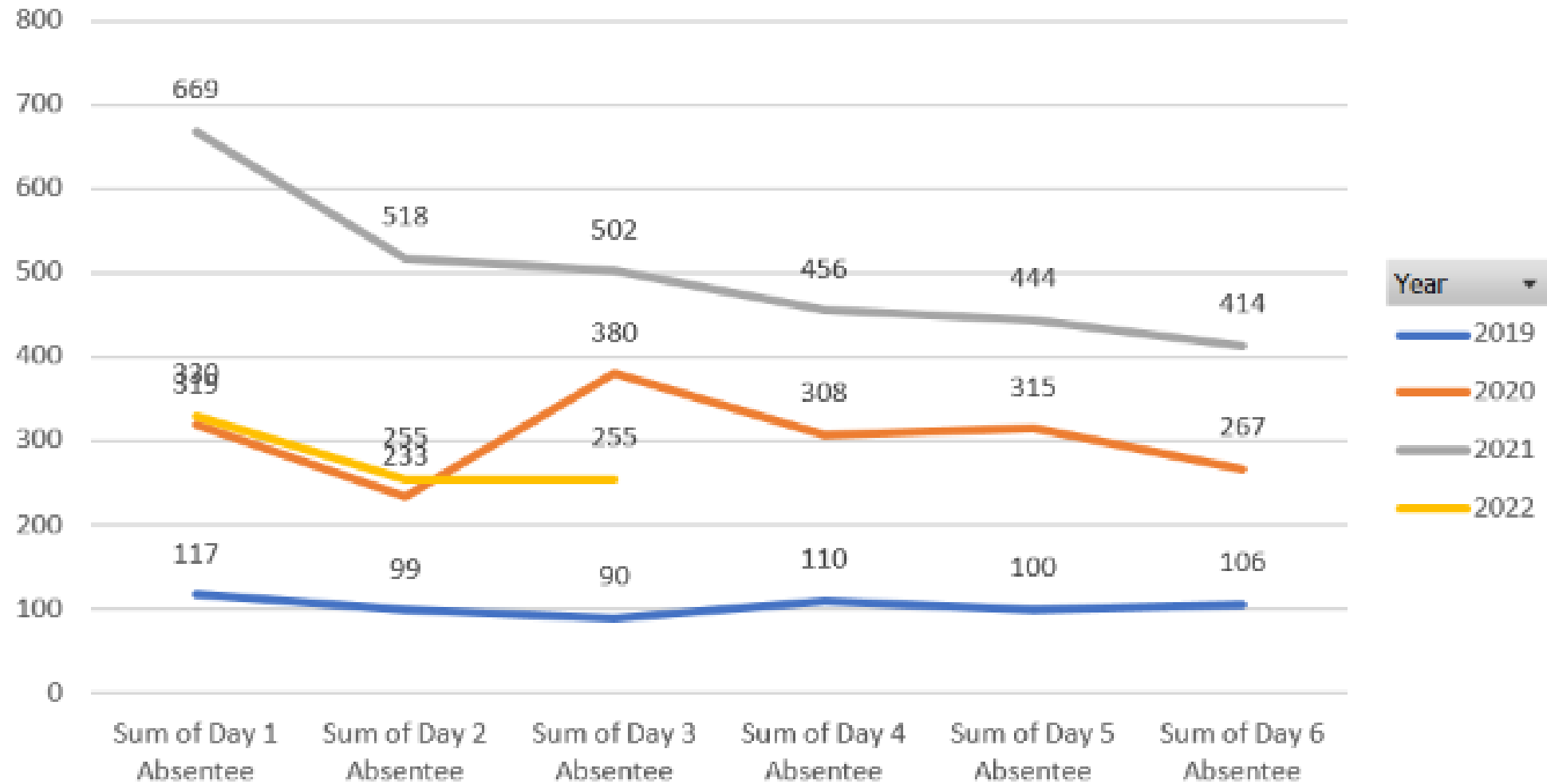
## First Week Enrollment Trends





Campus ▾

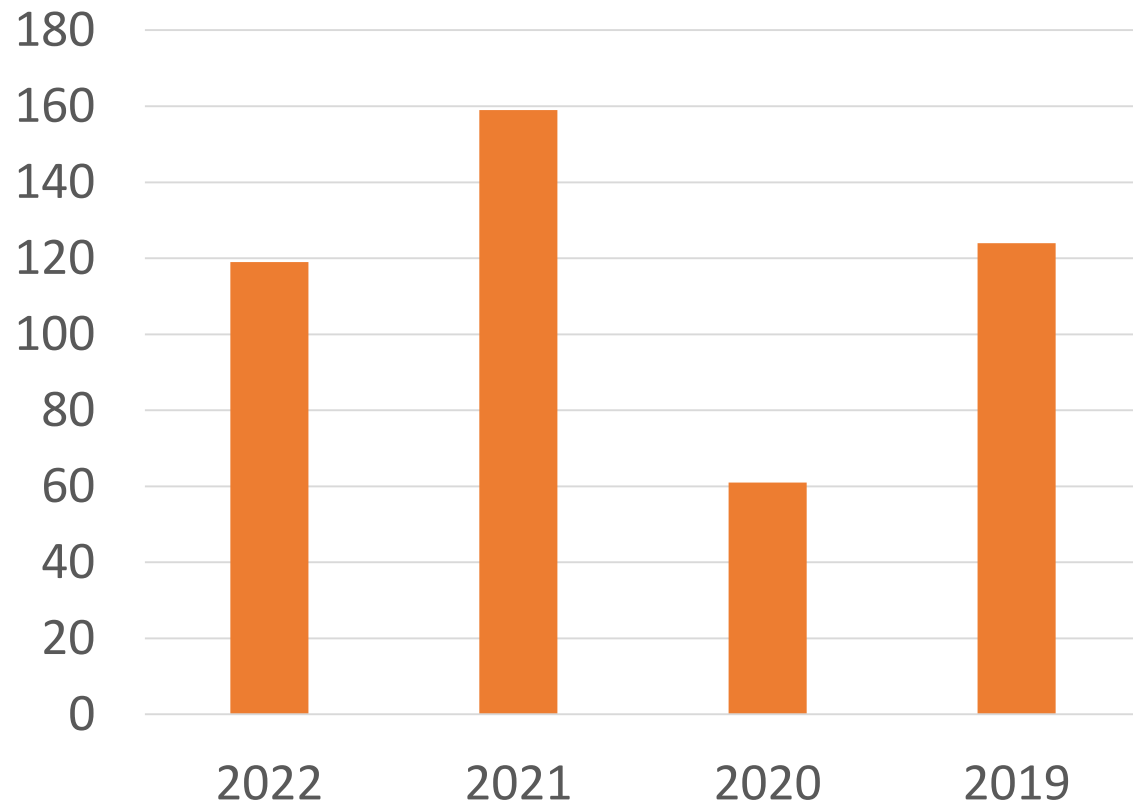
## First Week Absentee Trends



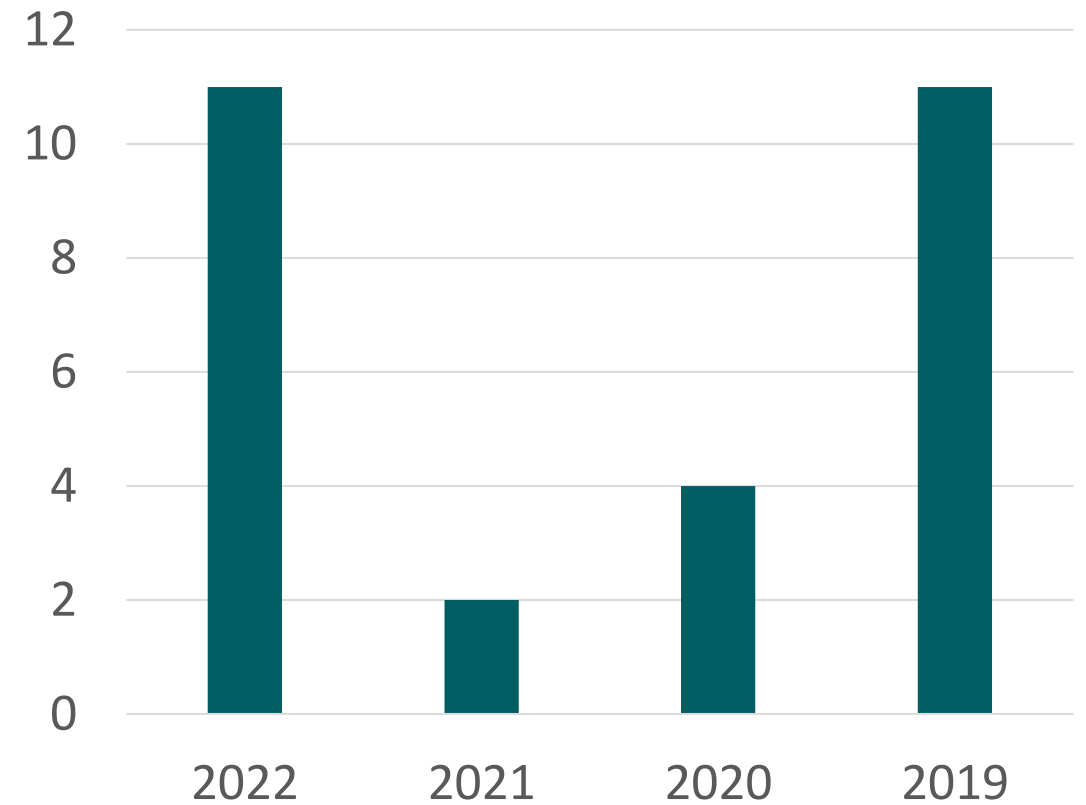
# CNCA Network| Exit/Enter Data - 4 year history



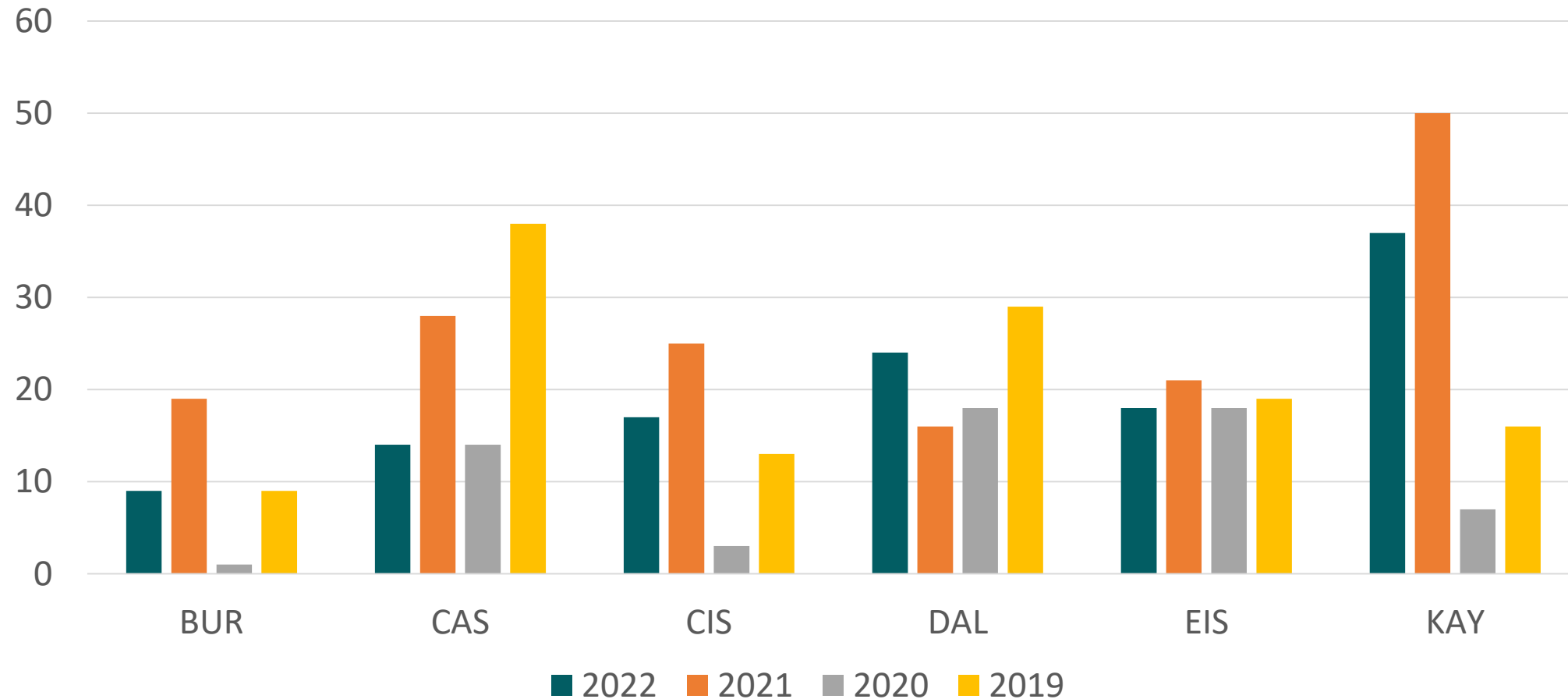
# of Students who Exit on First Day



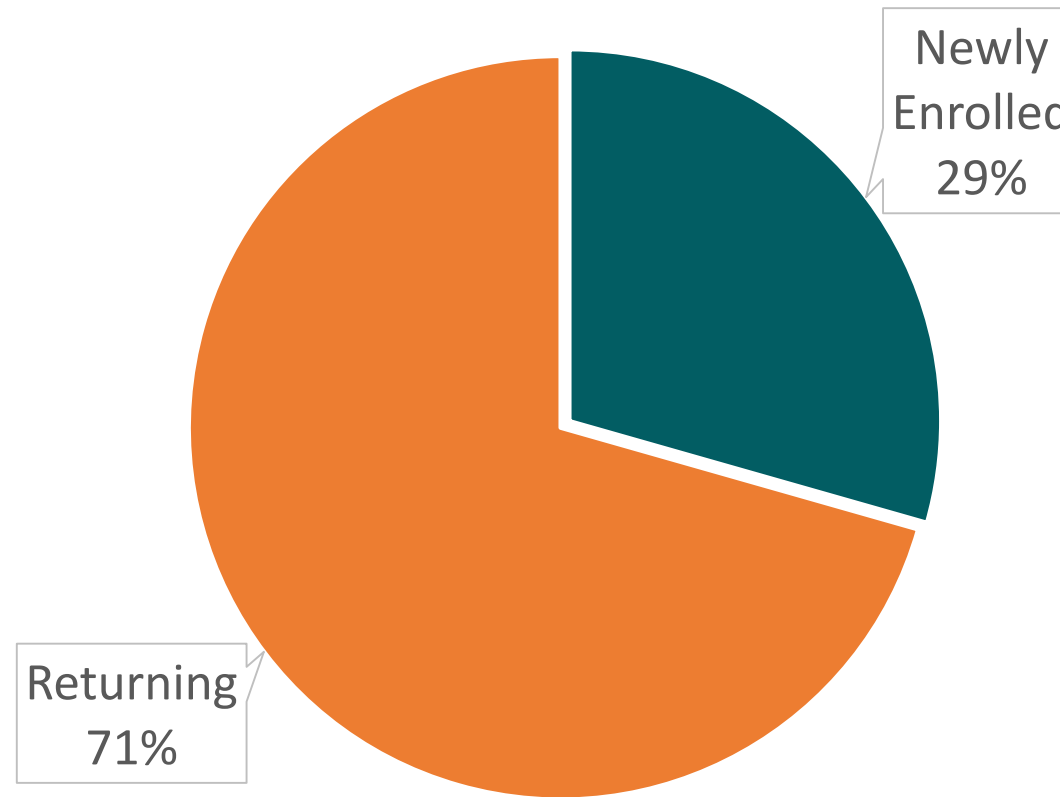
# of Students who Enter During First Week



# School Site | # of Students who Exit on First Day-- 4 year history



# 2022 Summer Sweat| CNCA vs Newly Enrolled





# Areas of Focus and Strategies in August

## Retention

- Dalzell Welcome Picnic this weekend
- ADA tracking
- Communication
- Data mining – exit interviews and surveys

## Recruitment

Targeted approach to fill gaps

- CIS: TK to 8<sup>th</sup> grade
- DAL: 10<sup>th</sup> – 12<sup>th</sup> grade
- CAS: TK-K & 3-4<sup>th</sup>
- KAY: 1-3 & 7-8