

# Carnegie Learning Blended Math Solution

(1 Year Partnership Plan Options)



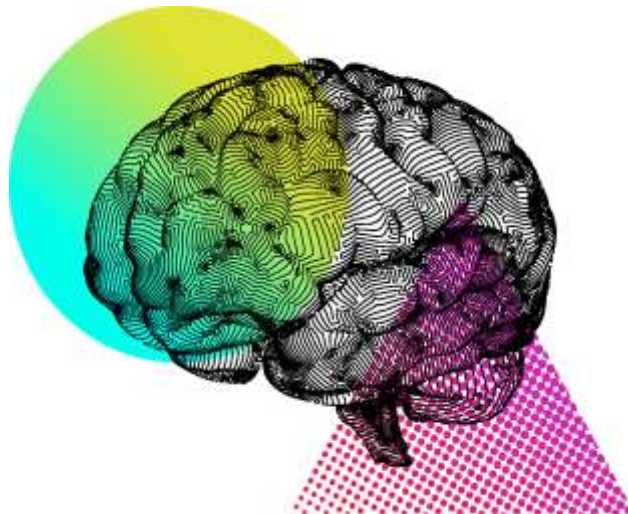
Making Waves Academy

*Cost Proposal Created: April 10<sup>th</sup>, 2023*

**Attention:**

Eric Becker

[ebecker@mwacademy.org](mailto:ebecker@mwacademy.org)



**\*\* Cost Proposal Valid Through: July 31, 2023**

## EXECUTIVE SUMMARY

---

Carnegie Learning is excited to continue our partnership with **Making Waves Academy!** This proposal outlines the course materials and recommended professional learning that will be used to support the implementation of Carnegie Learning High School Math 4<sup>th</sup> Edition. Outlined below is a Scope of Work designed to equip math teachers and leaders with the experiences and tools needed to create a 21st century, collaborative, student-centered mathematics classrooms with the ultimate goal of increasing instructional efficacy to achieve positive and sustainable student learning outcomes.

A partnership with Carnegie Learning puts a Tier 1, ESSA approved, evidence-based math solution and job-embedded professional development at the center of your adoption. Jurupa Unified School District can be assured that Carnegie Learning is committed to working side-by-side to make your vision for mathematics teaching and learning become a reality.

## Program Materials

---

As a core mathematics program, our Grade 9-12 Math Solution includes everything students and teachers need for students to learn and master new skills, deepen their conceptual understanding, and apply their mathematics learning to the real world. These programs cover Algebra 1, Geometry, and Algebra 2 for your High School. Within the core learning experience, Carnegie Learning utilizes the powerful blend of consumable textbooks for collaborative learning, the best math learning software available for individual mastery, and embedded professional development to support teachers, our math solutions contain the right resources for transforming math learning.

### STUDENT EDITION CONSUMABLE TEXTBOOK

The Student Edition is the primary classroom resource. Each lesson is built on our instructional approach of engage, develop, demonstrate and is a record of the students' thinking, reasoning, and problem solving. Lessons tap into students' prior knowledge and real-world experiences, engaging them in the math. The lessons build deep mathematical understanding through collaboration and questioning and are structured to provide students with various opportunities to reason, model, and explain mathematical ideas.

The Student Edition includes assignments which mirror the problem types presented in the lesson and focus on developing students' ability to make sense of problems, reason abstractly, and persevere in problem solving. Carnegie Learning Student Editions are flexible enough to be used to assist in differentiation of instruction for those who may need more work in a particular area. Students then demonstrate their learning through the Talk the Talk exercises where they are able to reflect on and evaluate what was learned. In addition, Student Edition assignments provide opportunities for students to practice skills learned in the current lesson and review previous topics.

*Student Editions are available in a 100% downloadable PDF format in English and Spanish.*

### **MATHIA SOFTWARE (INDIVIDUAL LEARNING WITH TECHNOLOGY)**

Driven by each student’s unique learning process, MATHia mirrors a human tutor with more complexity and precision than any other math software. Students work in MATHia to master mathematical skills and develop a deeper understanding of the math content in the textbooks. Unlike other software programs, MATHia actually teaches math, and also provides opportunities for practice.



MATHia was built by cognitive science and continues to grow and evolve through cognitive science. Other “AI” software looks at the problem-by-problem path, adapting as it goes. MATHia dives much deeper, at a very granular level, looking skill-by-skill. It looks at more than right and wrong — it looks at research to consider ways a student COULD go wrong. For example, it understands how a student might use valid math concepts but do so incorrectly. The result is that for students to move on, they need to understand WHY they got something right and show mastery at the skill level. And the way the software interacts with the student does more than teach — it encourages them, helps them, gets them to take ownership for their own learning. That’s meaningful engagement.

### **TEACHER MATERIALS**

#### **Teacher’s Implementation Guide**

The Teacher’s Implementation Guide is the definitive resource for planning, guiding, and facilitating student learning. The Teacher’s Implementation Guide includes introductions to the math in each topic, pacing support tools, suggestions for grouping students, and recommendations for how to connect group and individual learning.

#### **MyCL PORTAL**

The MyCL portal provides a simple-to-use, digital platform where educators and administrators access all of their Carnegie Learning products and resources. MyCL empowers teachers to access all text materials, customize curricula sequences, manage classes and student accounts, and access real-time reports with actionable insights into how well students are progressing in the Carnegie Learning materials.

Within MyCL is the Resource Center, an area for all teachers and administrators that serves as a central gathering site for educators and instructional resources. Teachers and administrators gain access to the textbooks in PDF form. This online resource is available 24/7 anywhere with an internet connection and provides teacher materials for viewing as well as customizable implementation support tools such as online professional development, administrative reports, instructor resources and more.

### **Assessments**

---

Our assessments are intentionally designed to motivate and engage students, to develop a deep conceptual understanding of mathematics and fluency with procedures, and to provide teachers with effective tools to assess student understanding along the way.

## **FORMATIVE ASSESSMENTS**

Formative assessment is an integral element of the Carnegie Learning Middle School/High School Math Solution. In the Student Text, every lesson concludes with a “Talk the Talk” where students demonstrate their learning. This is the third part of our instructional approach: Engage, Develop, Demonstrate.

Additionally, the most comprehensive formative assessment is fully integrated with learning within MATHia. MATHia continuously assesses every step of each student’s work, analyzing that work, and delivering students a custom learning path focused on developing a deep level of understanding and achieving skill mastery.

As students work through problems, each step is associated with one or more mathematical skills that are required to master the topic. As students ask for help or attempt to correctly complete each step, the system dynamically evaluates what the student’s action tells it about the student’s level of knowledge. This dynamic assessment is used to determine whether a student has mastered a topic, but it is also used to track progress towards end-of-year goals. Teachers and administrators receive an up-to-the-minute view of each student’s progress towards course goals. For remediation, teachers can use the Standards Report to understand which particular academic standards need to be addressed for individual students or for the whole class.

## **SUMMATIVE ASSESSMENTS**

The summative assessments in the Grade 6-12 Math Solution focus on preparing students for success on standardized tests, pre- and post-topic tests, and also on higher order thinking assessment.

Carnegie Learning’s Middle School/High School Math Solution includes the following summative assessments for every topic:

- Pre-Test / Post-Test
- End of Topic Test (two versions for flexibility)
- Performance Task with a grading rubric
- Standardized Practice Test

Carnegie Learning’s Middle School/High School Math Solutions assessments and item banks are available to customize, administer, download, and print through Edulastic. Edulastic provides powerful ways to assess learning and measure student progress.

Carnegie Learning’s partnership with Edulastic ([www.edulastic.com](http://www.edulastic.com)), an online assessment platform, provides educators with powerful ways to assess learning and measure student progress. Edulastic works alongside MATHia's proven formative assessment to provide a digital summative assessment.

Edulastic assessments provide immediate access to comprehensive results and data at the module-level for the Grade 6-12 Math Solution assessments. In addition, since all questions in the Edulastic item banks are automatically graded, Edulastic users receive immediate data on student performance without teacher data entry. This data can be viewed from across the district to individual class and student levels. Common assessments can also be created and shared to create additional benchmark assessments as required.

Edulastic is an ideal element of the Grade 6-12 Math Solution because educators across your district will have access to:

- **High-quality Assessments and Item Banks:** There are pre-built assessments for every Math standard in Grades K-12. Teachers and district leaders can also create custom assessments using technology-enhanced items, selecting from trusted item banks of more than 60,000 questions, or a combination of both. All assessments and items are aligned to college and career readiness standards.
- **Immediate Access to Comprehensive Results and Data:** Because all questions are automatically graded, you get immediate data on student performance without teacher data entry. The extensive reports include overview graphs, detailed statistics, and drill-down capabilities. For example, you can see and compare student performance, standards mastery and growth trends at the district, school, class, and student levels. All reports and data are easily printable or exportable into pdf or csv (Excel) formats.
- **Authoring with 30+ Technology-Enhanced Question Types:** Going well beyond multiple choice, there are more than 30 technology-enhanced question types, such as drag-and-drop, passage-based, selecting text evidence, number line, graphing, and more. District staff and teachers will have access to the authoring tools in order to create their own questions, in addition to those available in the public library or your custom District library.
- **Common Assessments:** Ability to create and share common assessments across the district and control access by teachers and students.

## Professional Learning Overview

Carnegie Learning is excited to partner with Jurupa Unified School District in order to support the use of our research-proven materials while developing best practices in math instruction across the middle school for their math educators.

### Overarching Goal

To build capacity within teachers, both experienced and new, building-level instructional leaders (principals, assistant principals, coaches, and facilitators) along with District Office Staff to create and support rigorous, student-centered mathematics learning environments in every mathematics classroom across Jurupa Unified School District.

## **Initial Implementation Workshop**

---

*Sessions available On-Site for Up to 25 participants*

The Initial Implementation Workshop gets your teachers and coaches started with Carnegie Learning curricula. Participants experience the research-based instructional model, become familiar with the teacher and student materials, and leave with an established process for planning and pacing throughout the school year. Participating educators will learn to:

- Effectively implement Carnegie Learning math curricula on a day-to-day basis
- Apply student-centered, standards-based instructional strategies
- Make connections between Carnegie Learning software, texts, and classroom instruction
- Navigate the resources available to teachers and students and the intent behind each of them

## **In-Classroom Job-Embedded Follow-Up Coaching Support**

---

*Limited to 4-6 teachers per day*

In-Classroom Support takes place within the classroom and provides side-by-side coaching from the Carnegie Learning master practitioners. Carnegie Learning master practitioners intentionally build relationships with teachers and leaders in order to help the student achieve success and promote high-quality Carnegie Learning implementations. During In-Classroom Support, master practitioners will:

- Support the Carnegie Learning implementation to ensure fidelity to the model
- Provide individual and group coaching to support continuous growth and improvement
- Support student-centered learning and collaborative mathematics classrooms
- Assist schools in monitoring and maximizing a constant stream of data specific to individual classrooms and individual students
- Master practitioners will work side by side with the instructional coaches to build their capacity to support and sustain the implementation.

## **Virtual Office Hours including Group Coaching and Consulting**

---

*Online, 1-hour sessions*

**Office Hours** provide the opportunity for teachers to receive support online from a CL master practitioner. Teachers can visit the virtual room during hours dedicated specifically to your school or district. Each teacher can choose to stay the entire time or just come for a short time to ask a specific question.

Virtual Office Hours can include:

- Group Lesson Planning Conversations with Teachers
- Group Subject Matter Content Conversations with Teachers
- Group CL Data Review Conversations with Teachers

## Proposed 1yr Plan Pricing without Skills Practice Books

This proposed 1-Year Blended Math Solution represents a Partnership Plan to support up to 480 students and 2 teachers. All Carnegie Learning Partnerships are fully customized to meet your unique needs, but this represents a baseline recommendation for your consideration.

Program Level	Every Teacher Receives:	Every Student Receives:
	<ul style="list-style-type: none"> <li>Print Teacher Implementation Guide</li> <li>Digital teacher materials for life of adoption</li> </ul> <p><i>** TIG's provided gratis through Adoption.</i></p>	<ul style="list-style-type: none"> <li>Print Student Edition</li> <li>All Digital Licenses for 1-Year Term                             <ul style="list-style-type: none"> <li>eText + MATHia</li> </ul> </li> </ul>
<b>Algebra 1</b>	- 2 Algebra 1 Teachers	- 160 Student MATHbooks - 160 Student eText + MATHia Licenses
<b>Geometry</b>	- 2 Geometry Teachers	- 160 Student MATHbooks - 160 Student eText + MATHia Licenses
<b>Algebra 2</b>	- 1 Algebra 2 Teacher	- 160 Student MATHbooks - 160 Student eText + MATHia Licenses

Professional Learning Plan	
<b>Total Embedded PL Service Summary</b>	This Professional Learning Plan includes: <ul style="list-style-type: none"> <li>Quantity 1 - Initial On-Site Implementation Workshop Session (6 hours)</li> <li>Quantity 2 - On-Site Job-Embedded Coaching Day (6 hours each)</li> <li>Quantity 4 - Virtual Office Hour with a CL Master Practitioner</li> </ul>

1-Year Total Investment Summary without Skills Practice Books		
Subtotal	** Estimated annual per student cost is \$70.61	\$33,892.80
Shipping	Shipping to one location	\$955.20
Taxes	CA Taxes on Shippable Items - Richmond Taxes (9.75%)	\$932.26
<b>Quote# Q-40305</b>	<b>Grand Total</b>	<b>\$35,780.26</b>

## Proposed 1yr Plan Pricing with Skills Practice Books

This proposed 1-Year Blended Math Solution represents a Partnership Plan to support up to 480 students and 2 teachers. All Carnegie Learning Partnerships are fully customized to meet your unique needs, but this represents a baseline recommendation for your consideration.

Program Level	Every Teacher Receives:	Every Student Receives:
	<ul style="list-style-type: none"> <li>Print Teacher Implementation Guide</li> <li>Digital teacher materials for life of adoption</li> </ul> <p><i>** TIG's provided gratis through Adoption.</i></p>	<ul style="list-style-type: none"> <li>Print Student Edition</li> <li>Skills Practice Books</li> <li>All Digital Licenses for 1-Year Term                             <ul style="list-style-type: none"> <li>eText + MATHia</li> </ul> </li> </ul>
<b>Algebra 1</b>	- 2 Algebra 1 Teacher Editions	<ul style="list-style-type: none"> <li>- 160 Student MATHbooks</li> <li>- 160 Student Skills Practice Books</li> <li>- 160 Student eText + MATHia Licenses</li> </ul>
<b>Geometry</b>	- 2 Geometry Teacher Editions	<ul style="list-style-type: none"> <li>- 160 Student MATHbooks</li> <li>- 160 Student Skills Practice Books</li> <li>- 160 Student eText + MATHia Licenses</li> </ul>
<b>Algebra 2</b>	- 2 Algebra 2 Teacher Editions	<ul style="list-style-type: none"> <li>- 160 Student MATHbooks</li> <li>- 160 Student Skills Practice Books</li> <li>- 160 Student eText + MATHia Licenses</li> </ul>

Professional Learning Plan	
<b>Total Embedded PL Service Summary</b>	This Professional Learning Plan includes: <ul style="list-style-type: none"> <li>Quantity 1 - Initial On-Site Implementation Workshop Session (6 hours)</li> <li>Quantity 2 - On-Site Job-Embedded Coaching Day (6 hours each)</li> <li>Quantity 4 - Virtual Office Hour with a CL Master Practitioner</li> </ul>

1-Year Total Investment Summary with Skills Practice Books		
Subtotal	** Estimated annual per student cost is \$80.12	\$38,457.60
Shipping	Shipping to one location	\$1,411.20
Taxes	CA Taxes on Shippable Items - Richmond Taxes (9.75%)	\$1,377.32
<b>Quote# Q-40303</b>	<b>Grand Total</b>	<b>\$41,246.12</b>



## Carnegie Learning Partnership Team



**Kerry Maxedon**

Sr. Account Executive

[kmaxedon@carnegielearning.com](mailto:kmaxedon@carnegielearning.com)

**Blake Bieritz**

Account Manager

[bbieritz@carnegielearning.com](mailto:bbieritz@carnegielearning.com)

**Brian Chernow**

Regional Vice President of Sales

[bchernow@carnegielearning.com](mailto:bchernow@carnegielearning.com)

**Tarin Barrow**

Director of Professional Learning

[tbarrow@carnegielearning.com](mailto:tbarrow@carnegielearning.com)



## TERMS AND CONDITIONS

- The attached quotations is confidential and proprietary information not to be distributed or shared by the Customer.
- By accepting this quote, Customer accepts Carnegie Learning, Inc.'s Terms of Use policy available at: <http://www.carnegielearning.com/terms-of-use>
- Prices are subject to change without notice.
- Quote is valid for 30 days.
- Please include your tax exempt certificate with your purchase order. The Carnegie Learning Federal Tax ID# is 25-1805640
- Any applicable sales tax will be added to the fee and invoiced unless customer provides Sales tax exempt certificate issued by customer state.
- Payment Terms: Net 30 Days. Payment of entire invoice amount is required within 30 days from invoice date.
- All media sold by Carnegie Learning, Inc. are sold on a non-returnable basis. The only exceptions to this policy are:
  - Media received that was not ordered (wrong title, wrong quantity). Materials must be in original shrink wrap, if applicable, and not used.
  - Media received in a damaged condition that would render it unsuitable for use.
  - Customer is responsible to inspect textbook shipments and report any textbook quantity, title or damage issues within 45 days of receipt. Failure to report issues within the 45 days could result in additional return fees.
- Carnegie Learning, Inc. is under no obligation to accept return requests after 45 days of customer receipt of order.
- Customer is responsible for expedited shipping costs that fall outside of our standard delivery process. All textbooks carry a standard shipping timeframe of 4-6 weeks. Shipments will occur earlier if stock is available.
- Multi-year licenses run consecutively from license activation date.
- The school district is responsible for providing all hardware necessary to run the software, as specified in CLI's Systems Requirements (available at <http://carnegielearning.com/support>). Prices do not include hardware.
- All Professional Development services purchased expire at the term of this agreement. Standalone Professional Development purchases will expire one year from the purchase date.
- All credit memos and credit balances that exceed 120 days old will first be applied to any existing balances. After application, any remaining credit balance will be refunded via a check. Carnegie Learning will mail the check to the address on file.
- An additional credit card fee of 2.5% of total before sales tax will be applied if customer decides to pay by credit card.