



MWA Board Meeting

January 26, 2023



Learn. Graduate. Give Back.

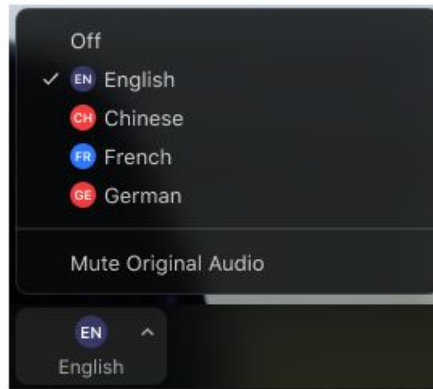
Activating Interpretation / Activar Interpretación

Computer

1. In your meeting/webinar controls, click **Interpretation**.



2. Click the language that you would like to hear.



3. (Optional) To only hear the interpreted language, click **Mute Original Audio**.

Cell Phone

1. In your meeting controls, tap ... **More**.



2. Tap **Language Interpretation**.

3. Tap the language you would like to hear.



4. (Optional) Tap the toggle to **Mute Original Audio**.



5. Click **Done**.

Public Comment

Use the raise hand function when your name is called.

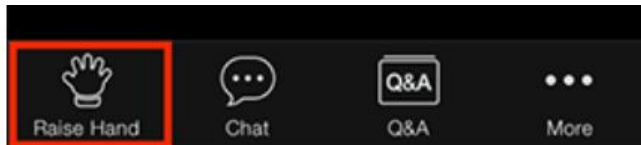
Computer

1. Click **Raise Hand** in the Webinar Controls.



2. The host will be notified that you've raised your hand. If the host allows you to talk, you may be prompted to unmute yourself. While unmuted, your profile picture and name is displayed to the host and panelists. Only your name is displayed to other attendees.

Cell Phone





Standing Reports



Learn. Graduate. Give Back.



Mission Connection: Student Well Being

Ms. Navarro, LCSW & Ms. McMillian, LCSW
January 26, 2023



Learn. Graduate. Give Back.

Key themes

- Anxiety
- Behavior issues
- Lack of motivation



Anxiety



Anxiety disorders include disorders that share features of excessive fear and anxiety and related behavioral disturbances.

- *Fear is the emotional response to real or perceived imminent threat, whereas anxiety is the anticipation of future threat. (DSM-5).*

- i.e. panic attacks
- school/classroom avoidance
- increase of formal diagnosis including from outside providers (which means an increase in 504 plan requests).



Behavior Issues



Student behaviors present as;

- Bullying
- peer conflict
- Student/teacher conflict
- Defiance with adults
- Classroom disruption

* Due to these presenting problems, suspension and detention rates are rising



Lack of motivation



A decrease in motivation can contribute to the following concerns:

- Cutting class
- School avoidance
- Increased number of failed classes
- Lack of classroom engagement





Social Work Department information

For the reporting period of August-December 2022 the social work department:

- served 200 unduplicated students
- total of 380 sessions
- had been operating with the vacancy of our 5th-6th grade social worker
- recently filled the position
 - currently has 3 FT social workers
 - 1 FT Coordinator (who is also in the process of completing her Master's in Social Work).





Case Scenario 1(MS):

- Initial referral: self referral for anxiety and social engagement
- Gender: identifying male, he/him
- initial anxiety presented as unable to remain in class 100% of the time due to disruptive classroom behavior and being unable to focus
- Anxiety affecting school attendance to avoid social interaction
- During the past 16 weeks (weekly session)we worked on processing feelings of how things made him feel and developed coping skills when things make him highly anxiety
- He shows resilience and is able to utilize journal tools such as drawing, written expressions and, recognition of anxiety causing triggers when class becomes too overwhelming with loud noise or disruptive behaviors and he is unable to focus on class assignments or teacher instructions



Case Scenario 2 (US):

- Student self referred
- Identifying gender: Female, she/hers
- Student presented with lack of motivation towards high school graduation
- Strenuous family relationships
- Experienced depressive symptoms
- School and class avoidance
- Historically, student maintained good grades and was college eligible.
- Low self-esteem
- Suicidal ideation
- Social Worker developed support plan
- Met weekly
- Through exploring goals and building coping mechanisms for ongoing stressors, student was able to demonstrate resilience by developing ways to address academic motivation
- Increase in self-esteem
- Acceptance into colleges



Thank you!

MWA Social Work Department:

Rachel Navarro, LCSW

Diamond McMillion, LCSW

Caitlin McGarry, MSW

Adilene Alvarado, MSW Candidate



Learn. Graduate. Give Back.



ASB Board Report

ASB Members: Fatima Cortes, Joshua Cuellar
January 26, 2023



Learn. Graduate. Give Back.

Table of Contents

- **Successes**
- **Challenges**
- **Priorities**
- **Questions & Conversation**



Successes

Successes

- **School Events**

- Day of Lights
 - Door Competition
- Potluck

- **New Clubs**

- Ultimate Frisbee
- Scheduled student performances during Feb 17th ASM.



Challenges

Challenges

- **ASB has two big events in February and it will take a lot of our attention. At the end of February, we have a week break. That will give ASB barely two weeks to plan out our spirit week.**



Priorities

Priorities

- **Gain more student insight on school activities**
 - Student surveying through Google Forms
- **Plan our Winter Dance (Feb 10th)**
- **Plan our All School Meeting (Feb 17th)**

Questions & Conversation



Learn. Graduate. Give Back.



Deep Dive: SEL Tool Pilot Update

Michael M Williams Jr

January 26, 2023

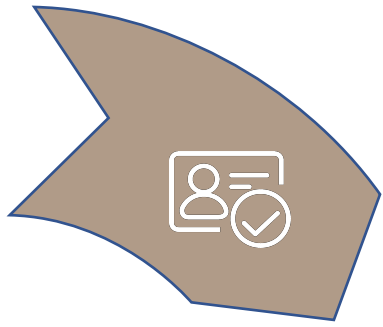


Learn. Graduate. Give Back.



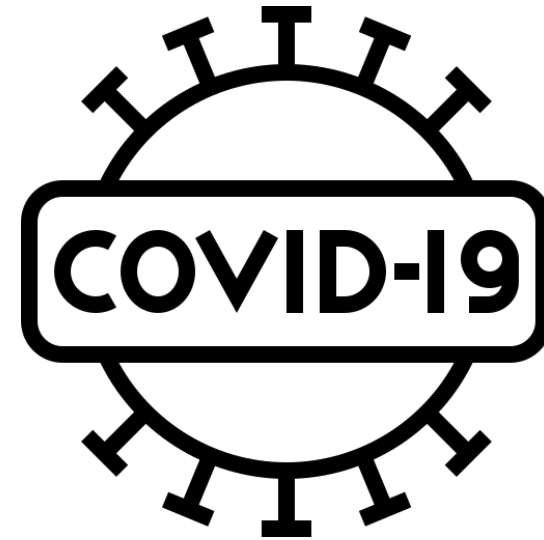
- **Identify and Define Requirements**
- **Platform Selection**
- **Timeline**
- **Participation Distribution**
- **Student Pre-Survey Results**
- **Platform Walk-Through**

Table of Contents



Identify and Define

Isolation and stress caused by the COVID-19 pandemic has pushed SEL in education to the forefront of most conversations. The decision to pilot an SEL solution was in hopes of addressing our students need around this topic.





Requirements

Find a technological solution that meets the following requirements:

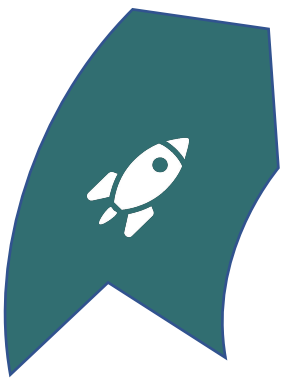
- Ready to use lessons
- Minimal learning curve
- Minimal set up time
- Grade level appropriate content
- Delivered grade, division, and/or academy wide
- Student engagement
- Automatic data collection



Platform Selection

Nearpod 21st Century Readiness program

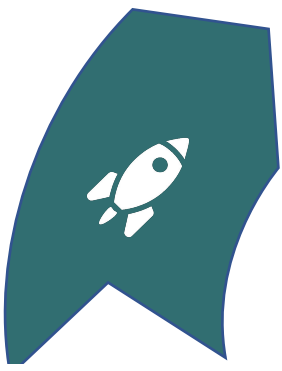
- **Curated content** that supports the whole learner
- **Ready-to-teach** interactive lessons, videos, and activities for digital citizenship, social & emotional learning (SEL), financial literacy, and college & career readiness
- **Intentionally organized resources** in a scope & sequence that connect the skills and knowledge to develop the whole learner
- **Exclusive access to Brain Breaks videos** that help teachers regulate classroom energy and focus



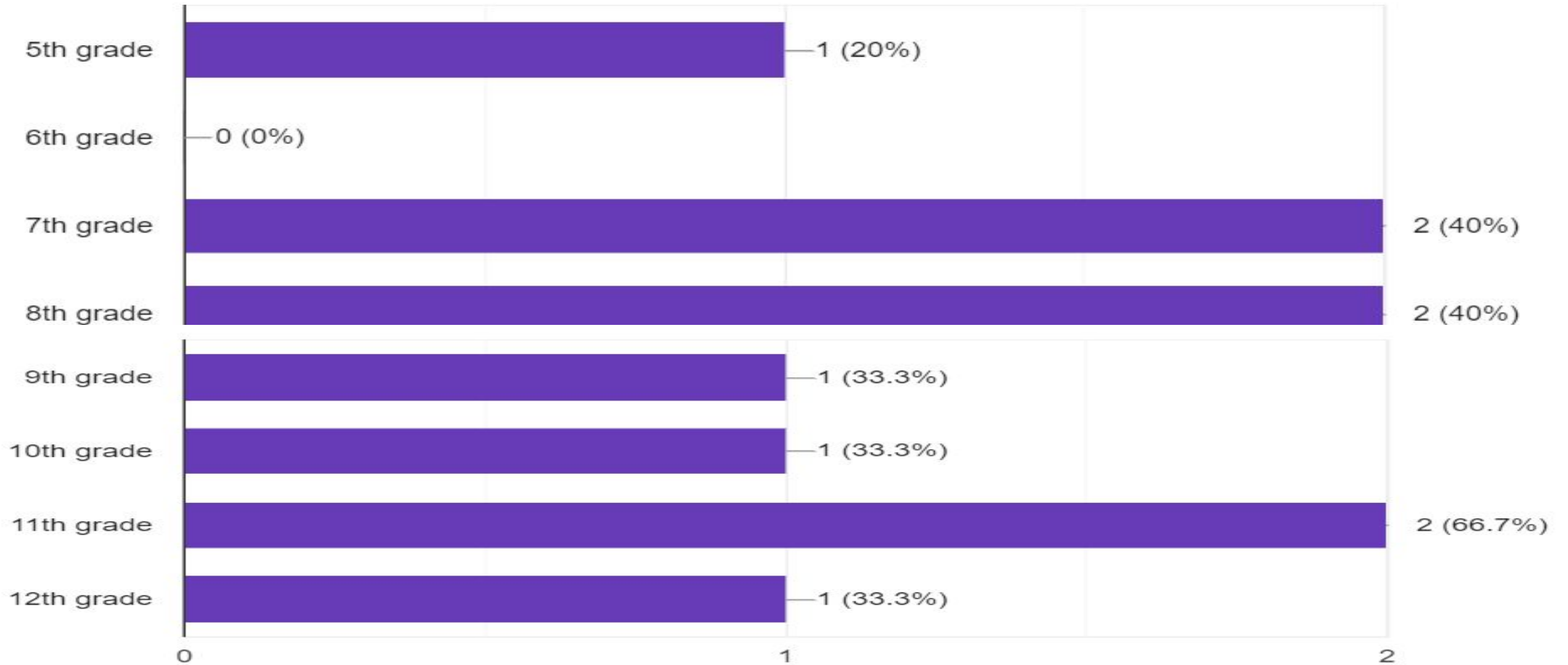
Timeline

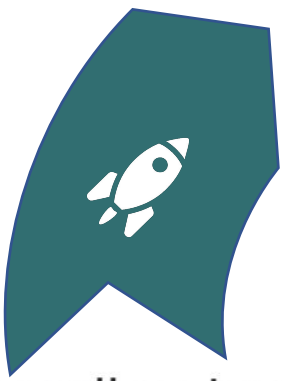
	2022-2023 AY				
	September	October	November	December	January
Recruit for pilot (9/9-9/16)					
Train participants on platform usage and best practices (9/19-9/23)					
Start pilot & administer pre-survey (9/26-10/3)					
Conclude pilot & administer post-survey (1/27)					
Circle back with group to review data (1/31)					





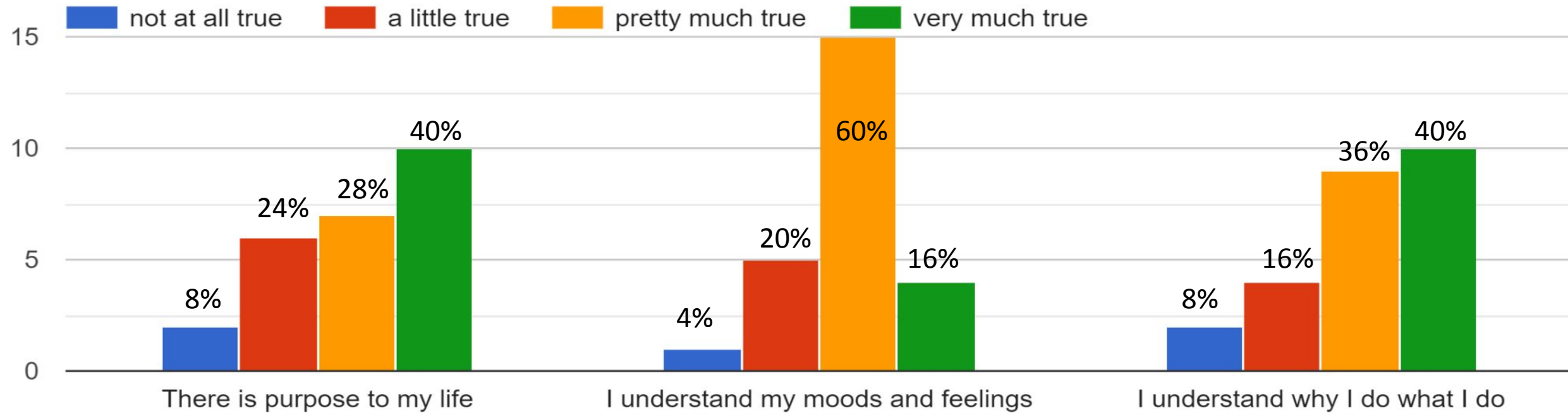
Participation Distribution

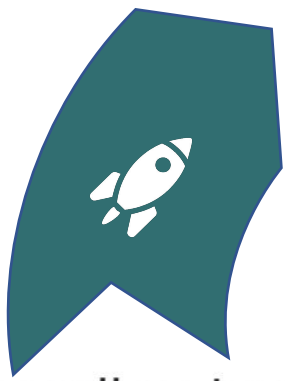




Self Awareness

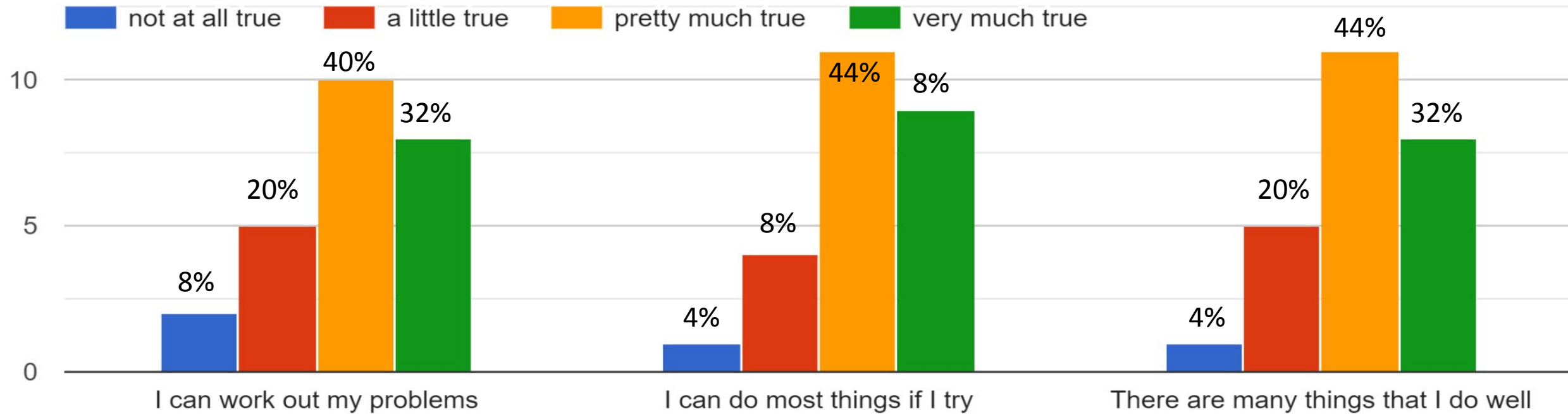
Please tell us how true each statement is for you...

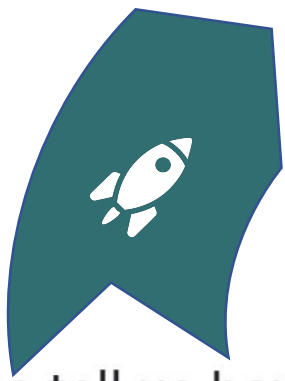




Self Efficacy (Belief in Self)

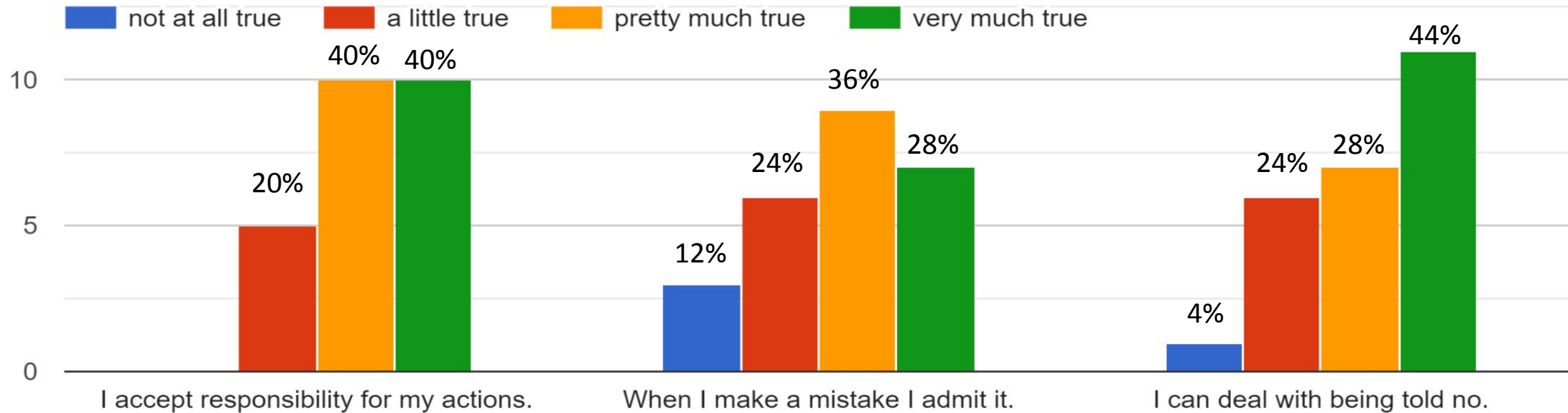
Please tell us how true each statement is for you...

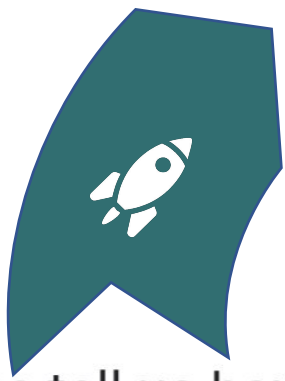




Emotional Regulation

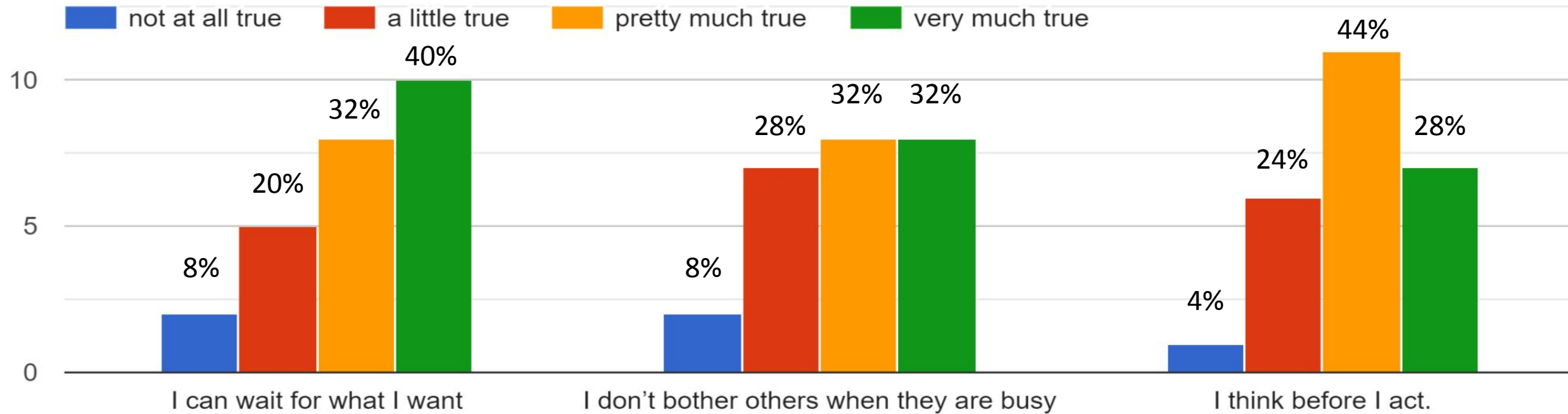
Please tell us how true each statement is for you...





Behavioral Self Control

Please tell us how true each statement is for you...



Contact Information

Michael M Williams Jr

michael.williams@mwacademy.org

(510) 262-1511 ext. 3136



Learn. Graduate. Give Back.



Break...



Learn. Graduate. Give Back.



Non-Action Items



Learn. Graduate. Give Back.



Action Items



Learn. Graduate. Give Back.