



Career Artifacts Quarterly Target: 10% of students will have completed 1 artifact in grades 5, 8, & 11.

☑ Reach Progress: 17% of students have completed at least one artifact in grades 5, 8, & 11.

ELA Growth Quarterly Target: 100% teachers of Grades 3-8 ELA and English 10 and 11 sections will administer the baseline diagnostic.

☑ Reach Progress: 100% of teachers have administered the baseline diagnostic.

Math Growth Quarterly Target: 100% of Grades 3-8 and Algebra I Math sections will administer the baseline diagnostic.

☑ Reach Progress: 100% of teachers have administered the baseline diagnostic.

Effective Instruction Quarterly Target: At least 50% of students are meeting T1 targets for curriculum-based assessments.

☑ Reach Progress: 58% of students are meeting T1 targets for curriculum-based assessments.

Student Behavior and Participation Quarterly Target: 50% of full academic year students will meet behavior and participation goals as measured by completion of benchmark assessments, regular contact, and weekly module completion.

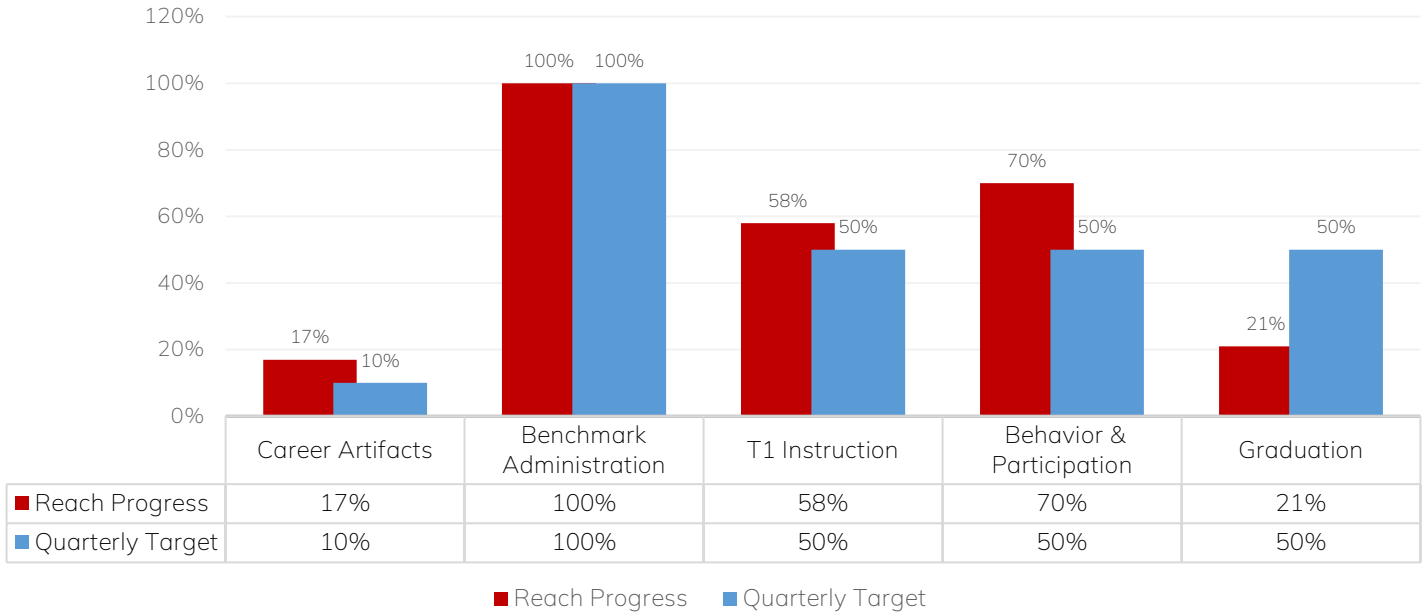
☑ Reach Progress:

- Benchmark Completion: 70% of students participated in beginning of the year benchmark assessments (92% completion at Elem, 63% completion at MS, and 53% at HS)
- Regular Contact: 74% of students have attended a live lesson within the past 28 days
- Attendance (Module Completion): 93% of students are on track for attendance

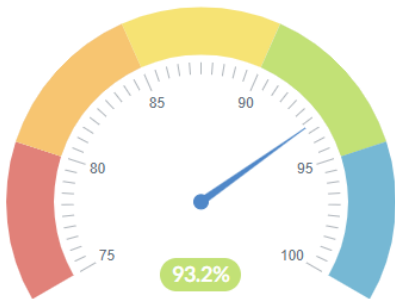
Graduation Quarterly Target: 50% of seniors will have already completed statewide high school graduation requirements prior to October.

🕒 Reach Progress: 21% of seniors have already completed statewide high school graduation requirements.

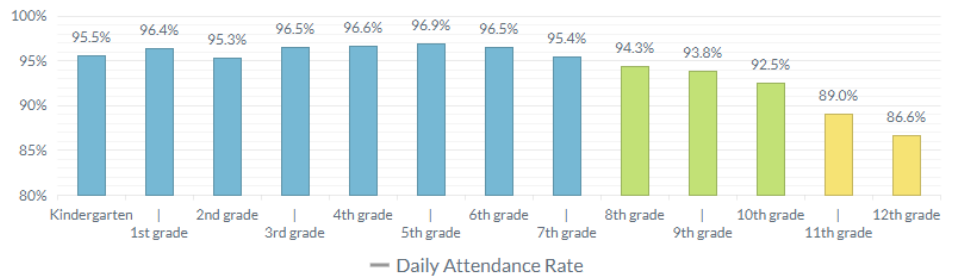
Reach Quarterly Progress 11.8.23



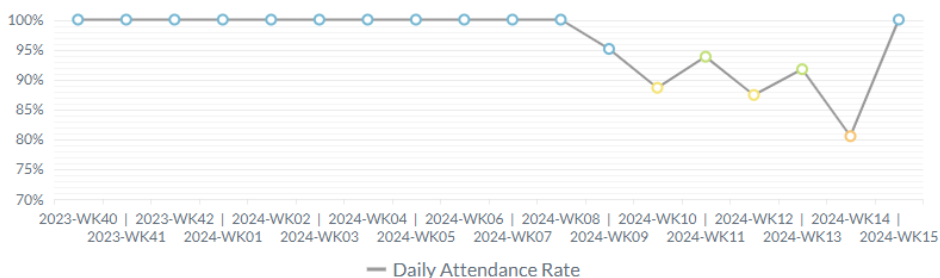
Daily Attendance Rate



Daily Attendance by Grade Level - 2023-2024



Weekly Attendance Trend - 2023-2024



Canvas Assignment Average Score

