



THE ACADEMY
OF ALAMEDA 

**Reopening
Schools Framework
2020/2021**

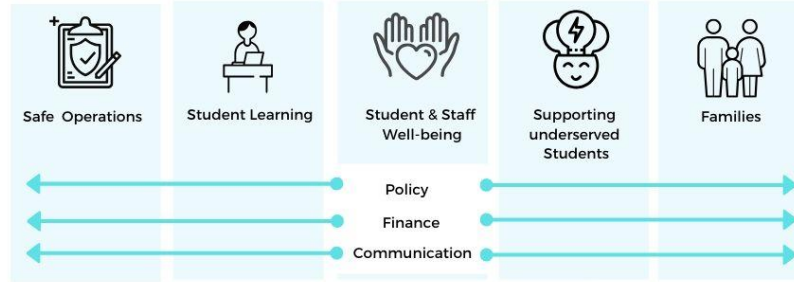
AoA's Five Key Dimensions For Reopening Thriving Schools

The Academy of Alameda's Organizational Team and Board of Directors are using **five Key Dimensions** to assess AoA's rate of readiness and to inform planning and implementation of its **2020/21 Reopening Plan**. The Key Dimensions are: safe operations, student learning, student and staff well-being, supporting prioritized students, and families.

We believe that **sound financing and policies, and effective communication** are critical to the success of each dimension as well their interrelated success.

Our plans must also be flexible so that they are responsive to new information and evolving public health guidance from the city, county, and state. Next year will be challenging and not always straightforward. We will move forward, change direction, and step back to the drawing board throughout the year. Because of our strong school community, we will adapt, learn, and persist to support our **students success**.

AOA Reopening Schools Plan



SAFE OPERATIONS	PRIOR TO REOPENING	PART OF REOPENING	WITH SCHOOLS REOPENED
	Write text here		

	PRIOR TO REOPENING	PART OF REOPENING	WITH SCHOOLS REOPENED
STUDENT LEARNING			

WELL-BEING
(SOCIAL-EMOTIONAL WELL-BEING OF STAFF AND STUDENTS)

PRIOR TO REOPENING

PART OF REOPENING

WITH SCHOOLS REOPENED

SUPPORTING HISTORICALLY UNDERSERVED STUDENTS

PRIOR TO REOPENING

PART OF REOPENING

WITH SCHOOLS REOPENED

OUR FAMILIES	PRIOR TO REOPENING	PART OF REOPENING	WITH SCHOOLS REOPENED