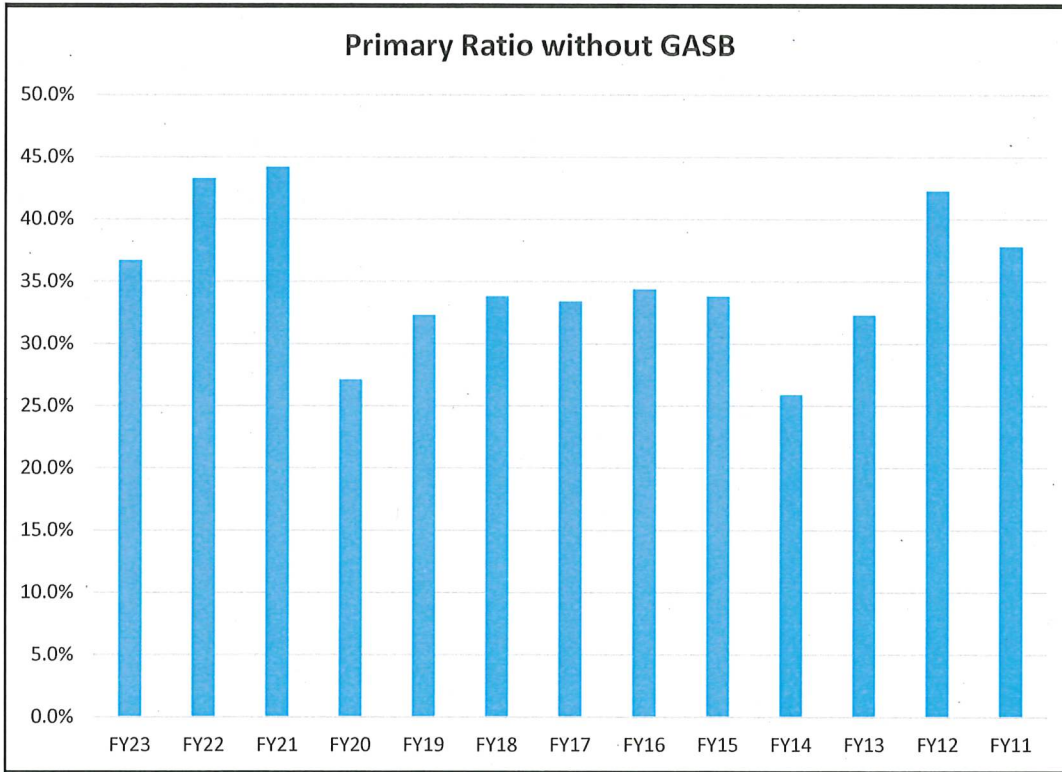
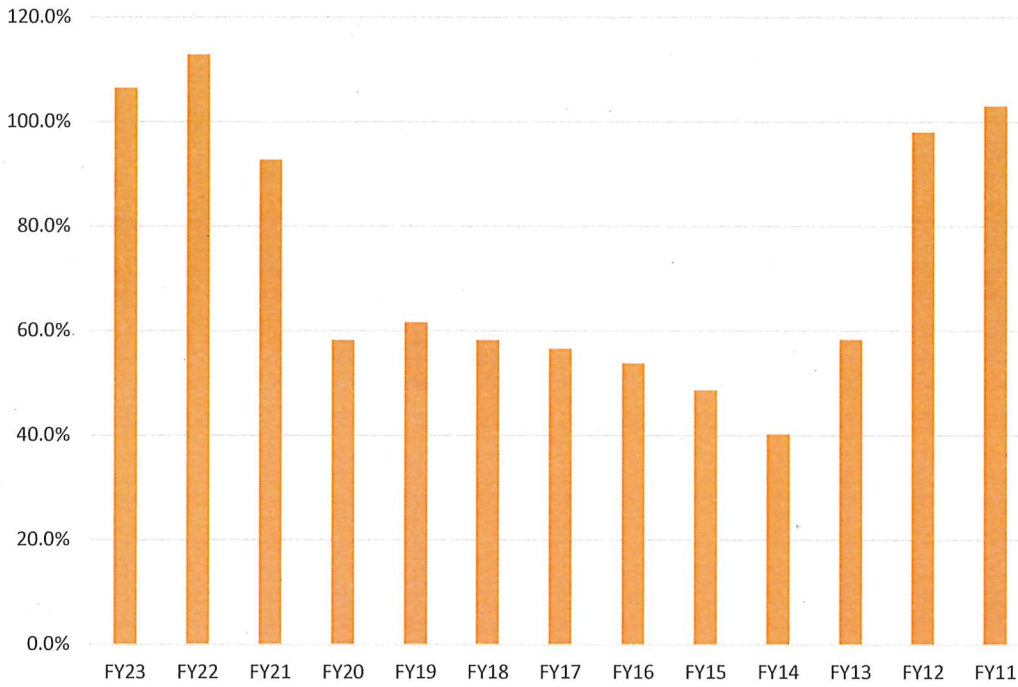


## Ratios without GASB

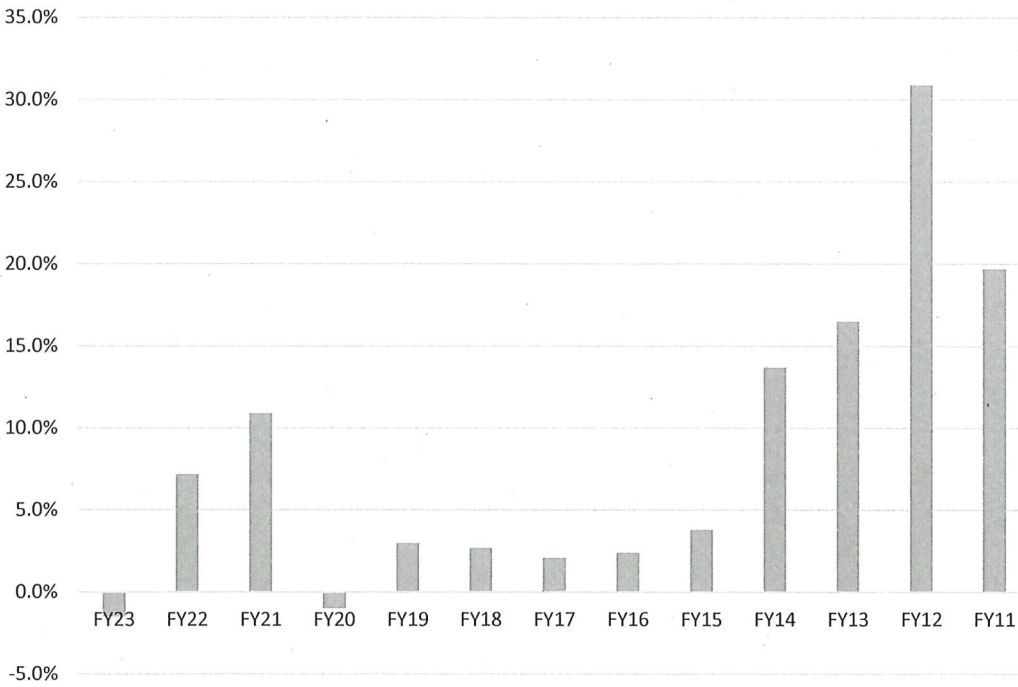
FY	Primary	Viability	Return on Net Assets	Net Operating Revenues	Debt Burden
FY23	36.7%	106.5%	-1.5%	-5.0%	4.7%
FY22	43.3%	112.9%	7.2%	-3.3%	3.6%
FY21	44.2%	92.8%	10.9%	5.6%	2.3%
FY20	27.1%	58.3%	-1.0%	-2.8%	5.5%
FY19	32.3%	61.7%	3.0%	0.7%	5.3%
FY18	33.8%	58.2%	2.7%	2.8%	5.7%
FY17	33.4%	56.6%	2.1%	1.5%	5.4%
FY16	34.4%	53.8%	2.4%	2.3%	5.8%
FY15	33.8%	48.7%	3.8%	1.2%	5.0%
FY14	25.9%	40.3%	13.7%	4.2%	4.2%
FY13	32.3%	58.4%	16.5%	0.9%	3.2%
FY12	42.3%	98.1%	30.9%	3.9%	3.2%
FY11	37.8%	103.1%	19.7%	9.6%	2.1%



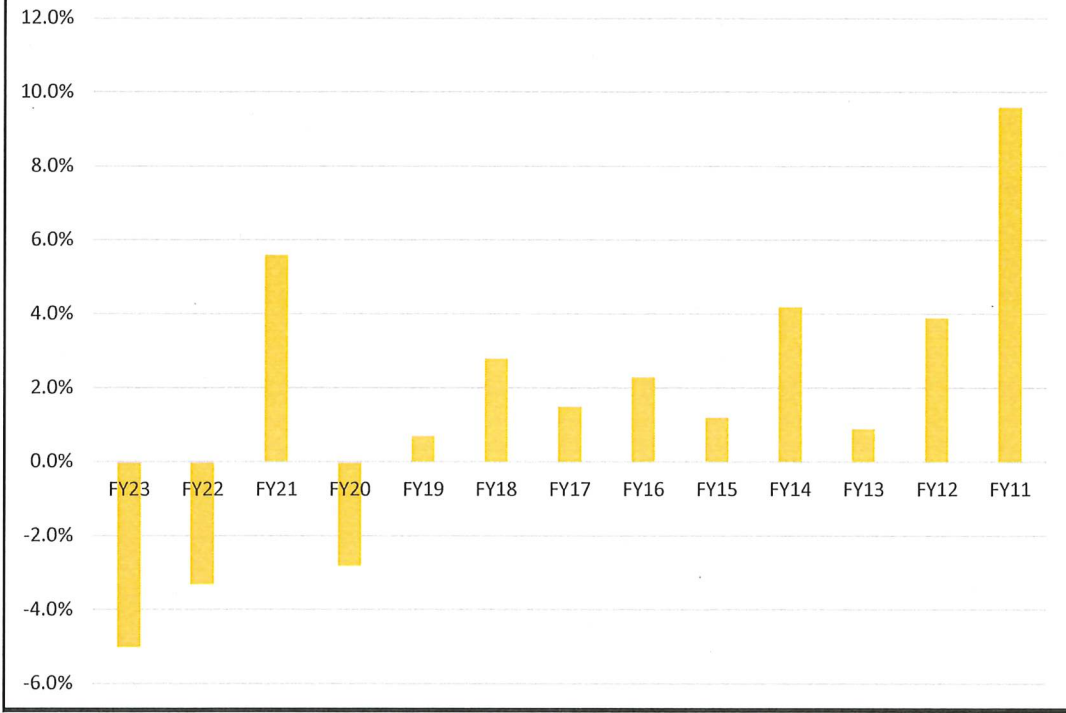
**Viability Ratio without GASB**



**Return on Net Assets Ratio without GASB**



**Net Operating Revenues Ratio without GASB**



**Debt Burden Ratio without GASB**

