



# 23-24 Tri 1 Academic Data



## Our Mission

To prepare every scholar to achieve their goals for college and the world beyond.

# Land Acknowledgment

---

Every community owes its existence and vitality to generations from around the world who contributed their hopes, dreams, and energy to making the history that led to this moment. Some were brought here against their will, some were drawn to leave their distant homes in hope of a better life, and some have lived on this land for more generations than can be counted. Truth and acknowledgment are critical to building mutual respect and connection across all barriers of heritage and difference.

We begin this effort to acknowledge what has been buried by honoring the truth. We are standing on the ancestral lands of the Nipmuc, Narragansett, Niantic, Pokanoket, Pequot, and Wampanoag people. We pay respects to their elders past and present. Please take a moment to consider the many legacies of violence, displacement, migration, and settlement that bring us together here today.

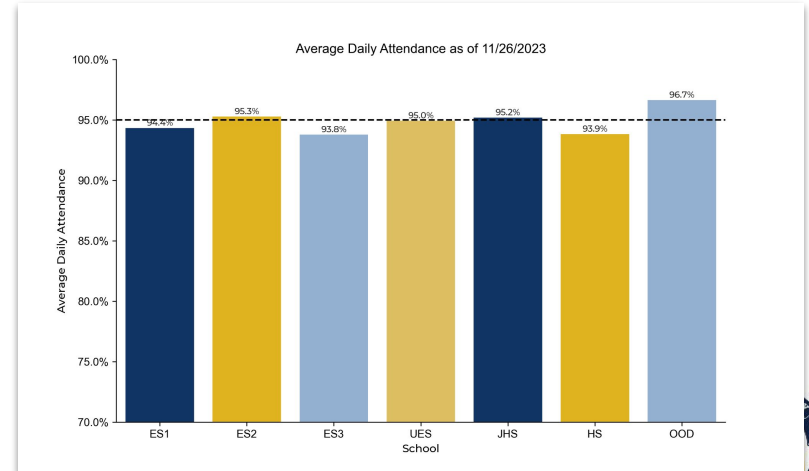
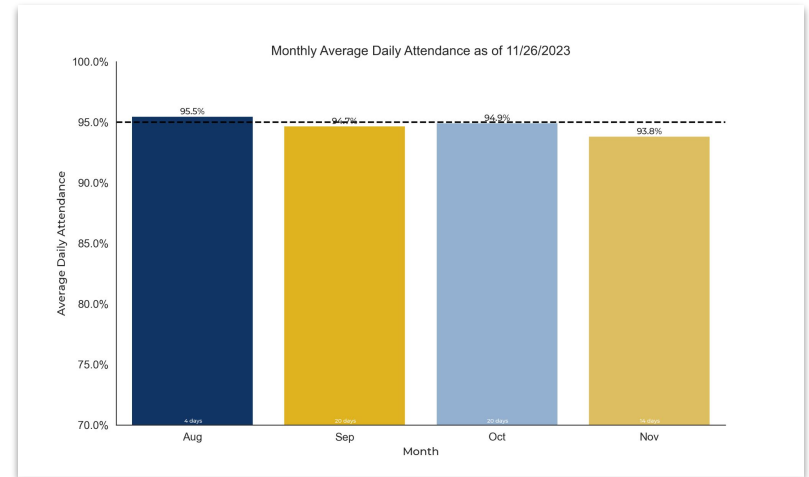


# Attendance

# Average Daily Attendance

Across the Network average daily attendance remains just shy of 95% at 94.6%. November saw slightly lower attendance rates than September and October.

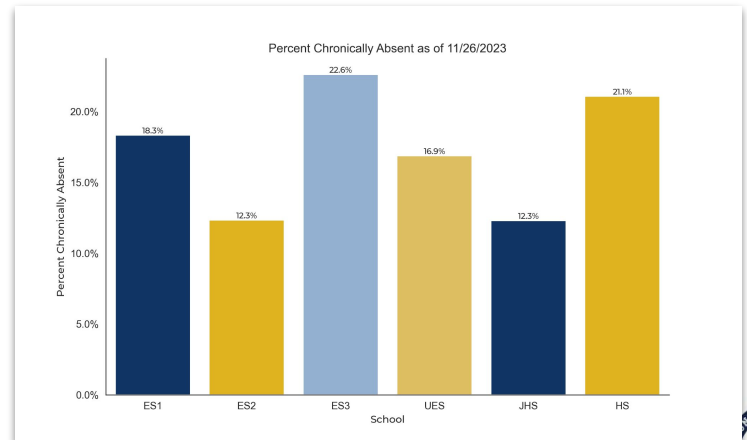
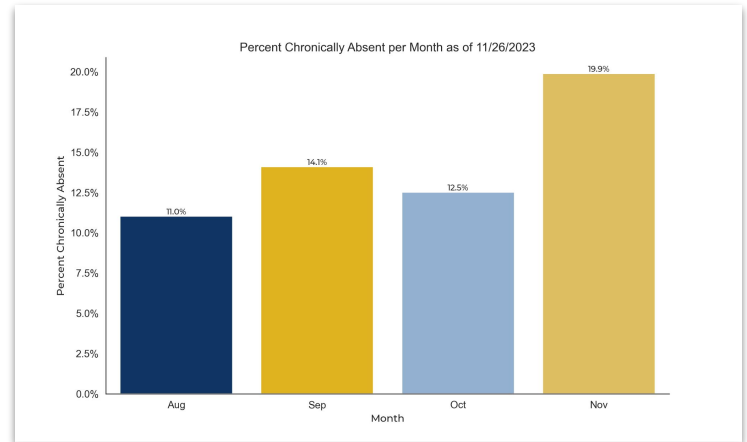
ES2, UES, and JHS are all seeing ADA at or above 95%.



# Chronic Absenteeism

About 17% of BVP Scholars are chronically absent (greater than 10%.) November saw a significantly higher percentage of students being absent 10% or more days than previous months.

Chronic Absenteeism differs greatly by school.

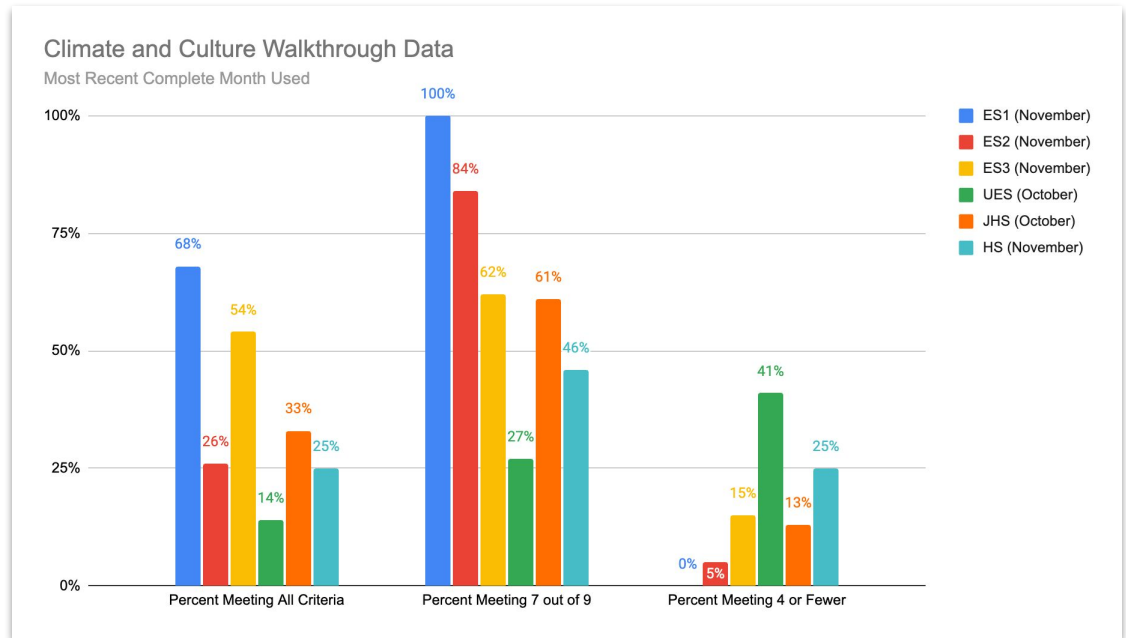


The logo for Blakstone Valley Prep Mayoral Academy is a circular emblem. It features a central anchor with an open book behind it. The text 'BLAKSTONE VALLEY' is written across the top in a banner, 'PREP' is on the right, and 'MAYORAL ACADEMY' is at the bottom. The word 'BRIDGE' is written vertically on the anchor's shank. Two stars are positioned at the bottom left and right of the emblem.

# Climate and Culture data (Goal C)

# Climate and Culture Walkthroughs

At the end of Tri 1, ES1 continues to be a strong point with 100% of teachers meeting at least 7/9 on DOS. All schools have improved by at least one metric since BOY and we are continuing to prioritize culture as well as beginning academic walkthroughs.





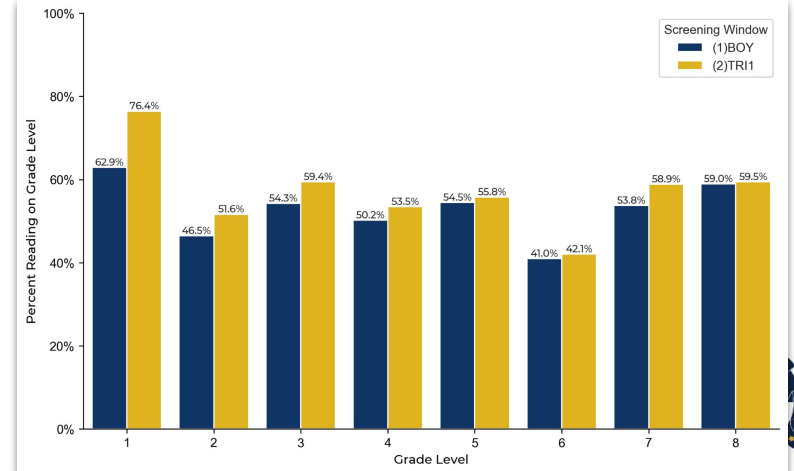
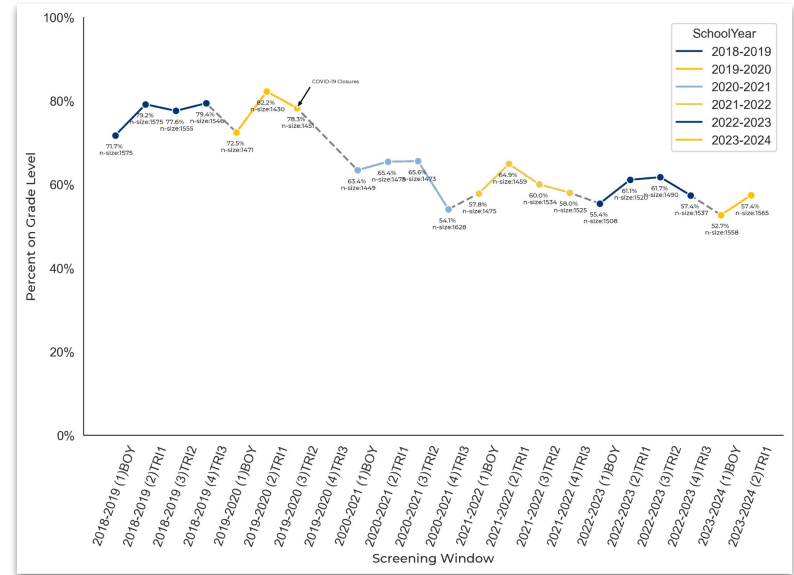
The logo for Blacksstone Valley REP Mayoral Academy is a circular emblem. It features a central anchor with an open book behind it. The words "BLACKSTONE VALLEY" are written in a banner at the top, and "REP" is written in a banner on the right. The words "MAYORAL ACADEMY" are written in a banner at the bottom, flanked by two stars. The word "BRIDE" is written vertically on the anchor's shank. The entire logo is rendered in a light yellow color on a solid yellow background.

# STAR Assessments (Goal B)

# STAR Math

BVP saw just under a 5% increase in the percentage of scholars performing math on grade level. BVP typically sees an increase from the BOY window.

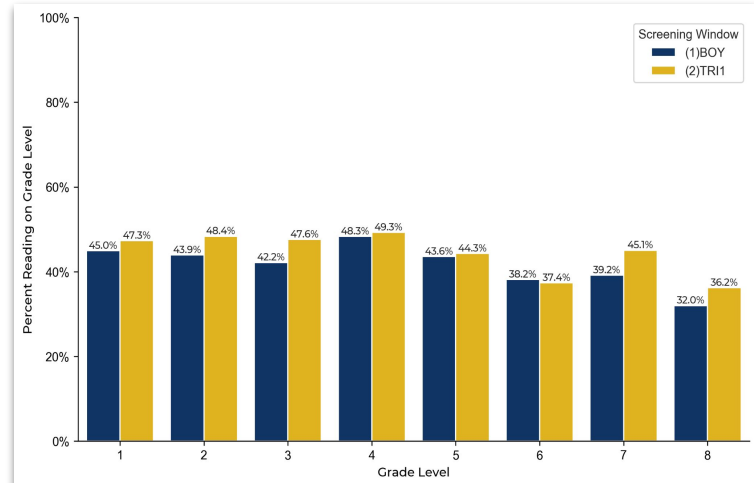
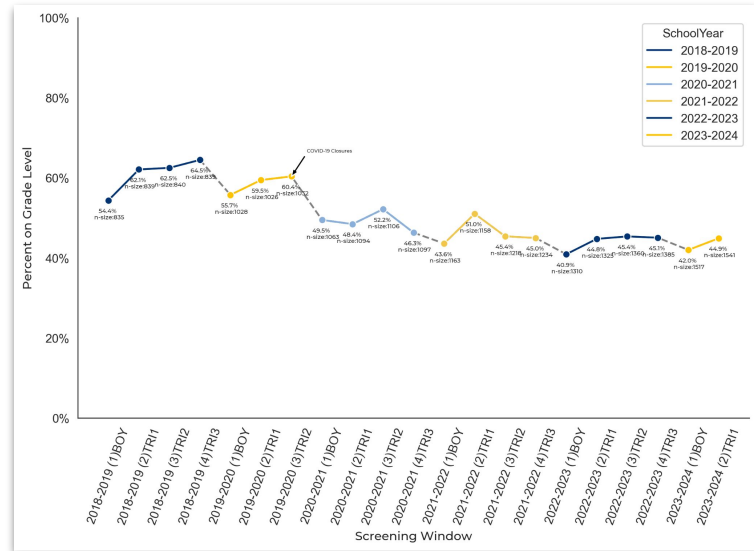
All grades saw an increase in the percentage of scholars performing math on grade level. Grade 1 saw significant improvement from the BOY window.



# Star Reading

The percentage of scholars reading on grade level increased by just under 3% from the BOY window. BVP typically sees a small increase from BOY to TRI1.

All grades except 6th saw increases in the percentage of scholars on grade level from the BOY window.





EL Benchmarks: Early Literacy (Goal B)

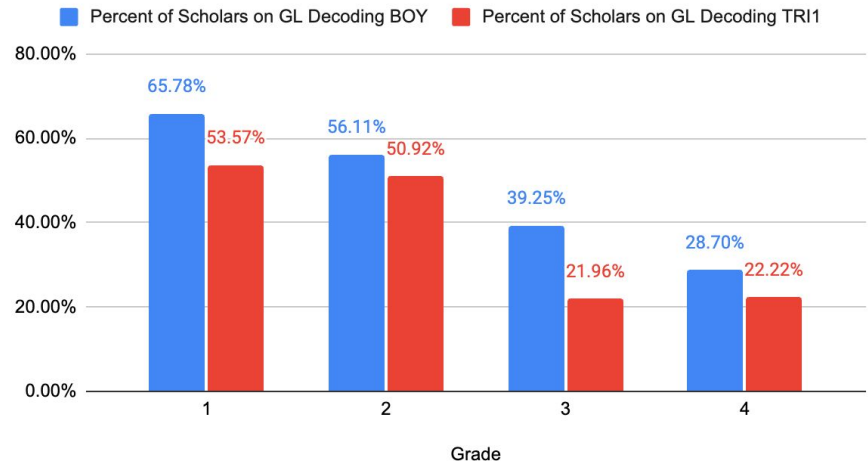
# Decoding

Overall across the network, we saw the majority of scholars grow in their Early Literacy Decoding Skills. 58% of scholars grew at least one microphase, and 37% remained in the same microphase from BOY/Previous Year. Only 5.5% of scholars regressed in their Decoding phases.

However despite seeing growth in every grade, this growth was not enough to persist scholars into Grade Level phases. *Scholars decoding skills are growing, but too slowly.*

Grew	473
Grew 1 Level	362
Grew 2 Levels	83
Grew 3 Levels	18
Grew 4+ Levels	10
Stayed the Same	299
Regressed	45

EL Benchmark: Grade Level Decoding Targets Met

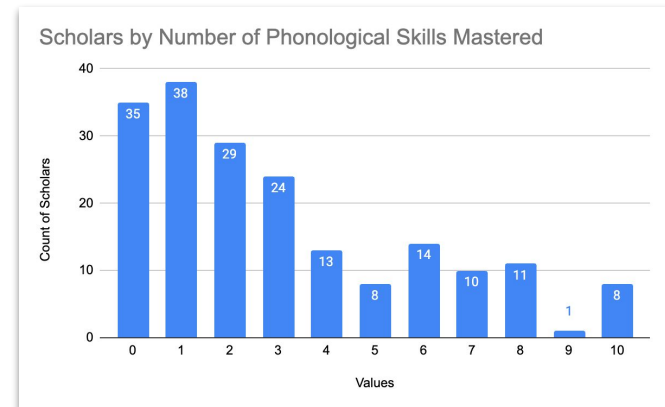


# Letter Sounds and IDs/Phonological Awareness

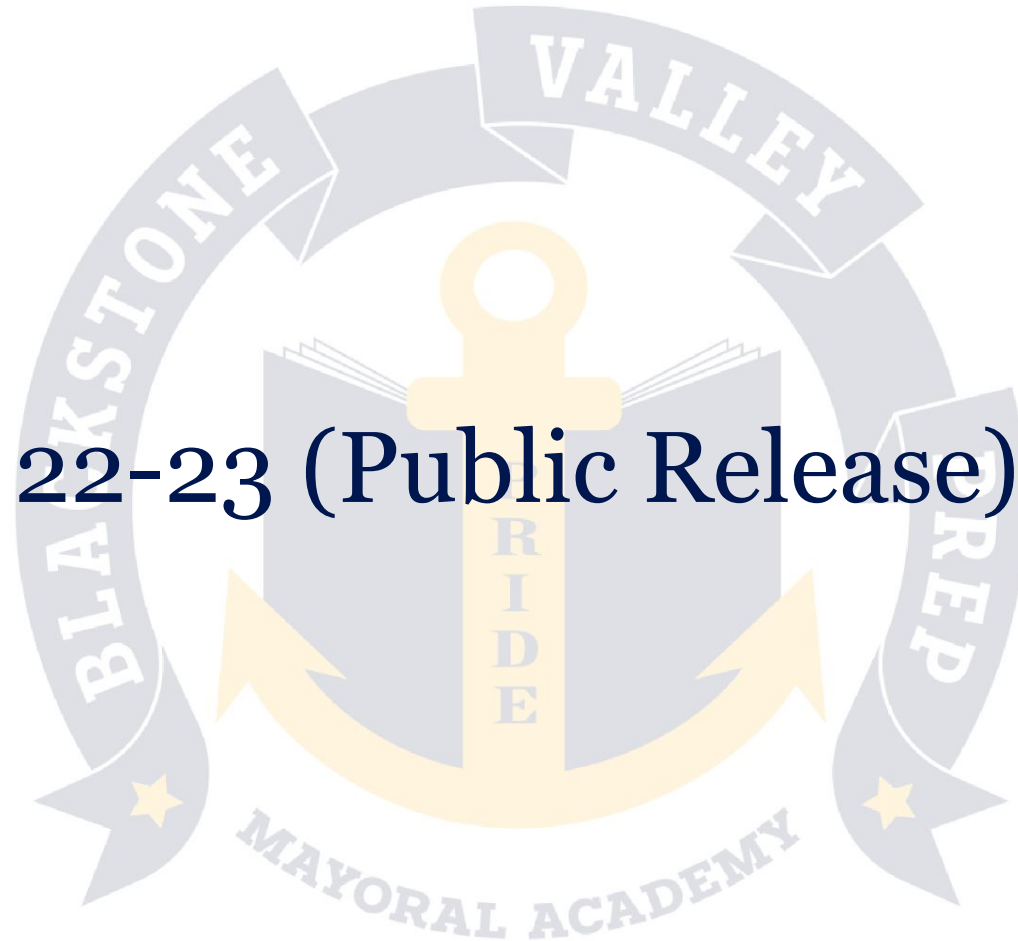
63% of Kindergarten scholars have mastered an appropriate number of Letter Sounds and Identification for this point in the school year.

Note about Phonological skills here

Letter Sounds and IDs	Level	Count	Percent
<30	Far Below	13	5.80%
31-70	Below	38	16.95%
71-80	On Level	15	6.69%
80+	Above Level	127	56.66%

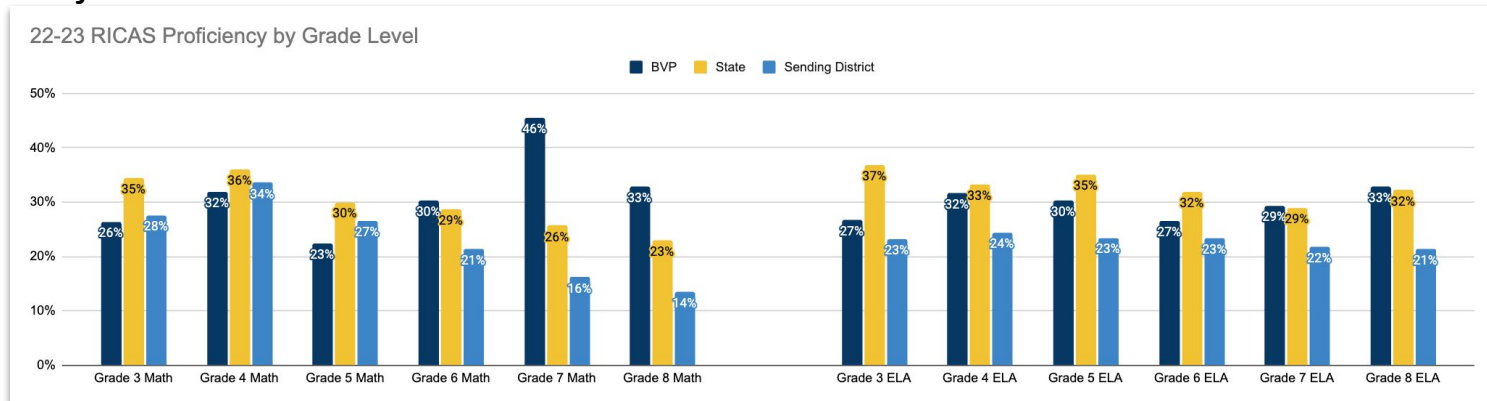
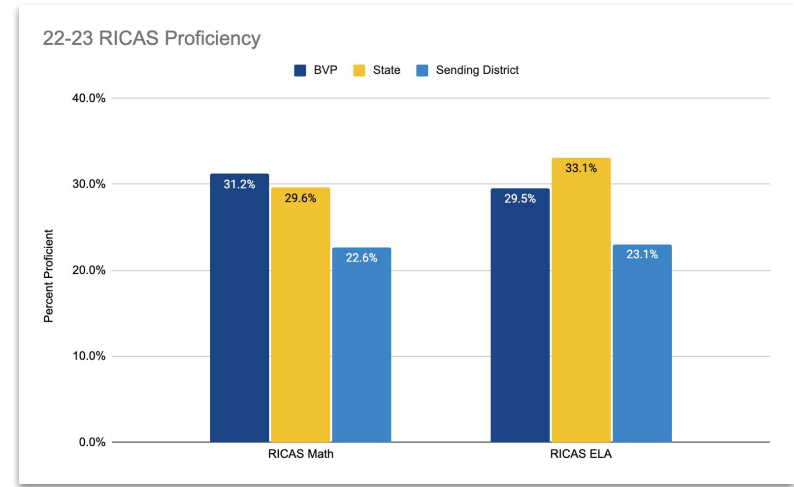


**RICAS 22-23 (Public Release) Goal B**



# RICAS

BVP saw slight increases in both Math (+3%) and ELA (+2%) proficiency from previous years. The same increases were seen across the state. BVP outperformed the state in Math but underperformed in ELA. BVP outperforms the weighted average of its sending districts in both subjects.







# High School Academics (Goal B)

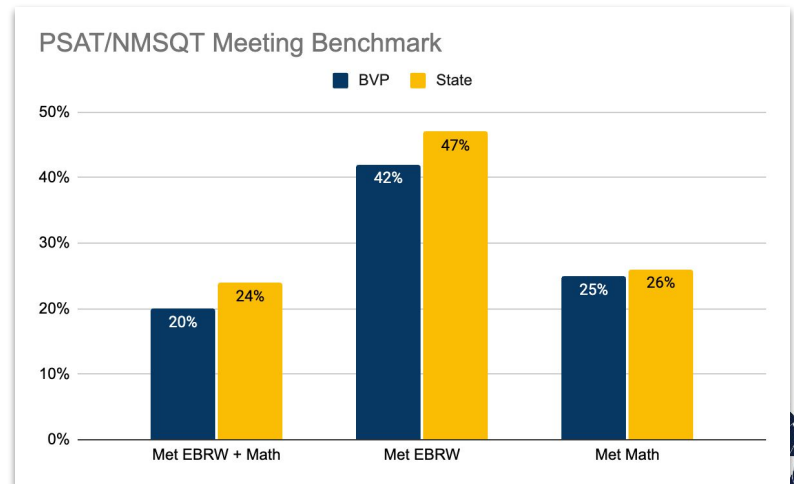
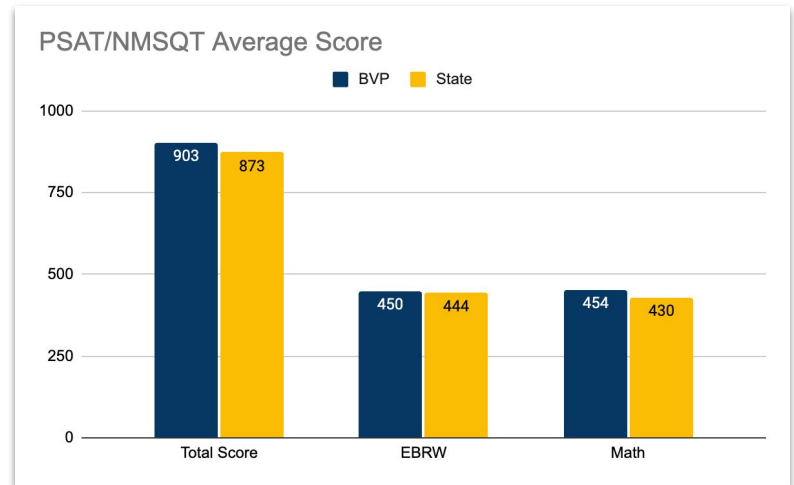
# PSAT/NMSQT

11th grade BVP Scholars recently took the PSAT/NMSQT. The last (official) practice test they will take before the spring SAT School Day.

While BVP had slightly higher average scores than students across the state, it also had fewer scholars who met the college and career benchmarks.

The previous cohort of scholars were at 59% meeting the benchmark in ELA and 34% in Math at this time last year, compared to 42% and 25% this year.

It is important to note that this PSAT took the new *Digital SAT* format.



# Alg 1 Pass Rate

60% of Algebra 1 scholars improved their grade from the progress report window. Despite this, at the end of Quarter 1 just 66% of scholars were passing Algebra 1.

