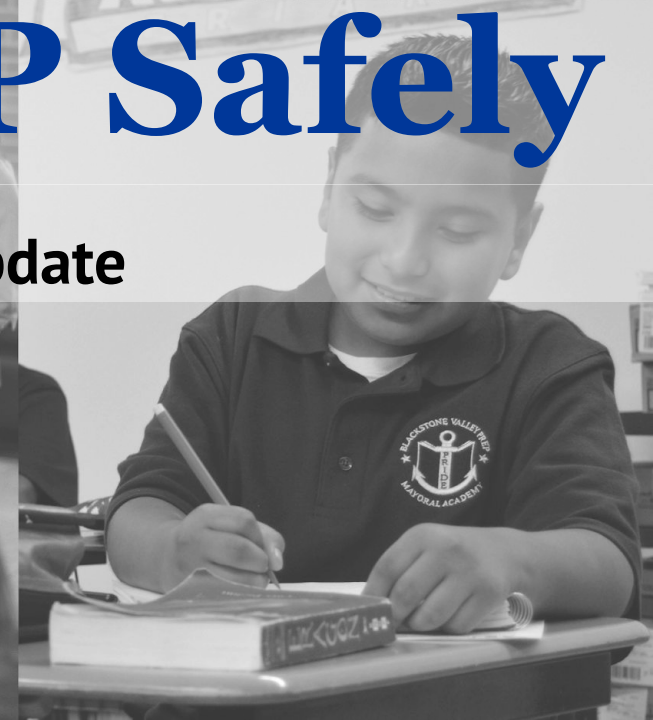




Reopening BVP Safely

October 26, 2020 Board Update



Introduction

Jeremy Chiappetta

Superintendent and CEO

Blackstone Valley Prep

Parent of Three BVP Scholars

jchiappetta@blackstonevalleyprep.org

@chiachess on twitter

Our Mission

The mission of Blackstone Valley Prep is to prepare every scholar for success in college and the world beyond.

Our Values

BVP Values

Perseverance

Respect

Integrity

Discipline

Enthusiasm

+ 1 Love

RI Reopening Guiding Principles

1) Safety First,

2) Transparency,

3) Equity,

4) Listening, and

5) Decisiveness.

Our Values In Action



Dr. Stephanie Downey Toledo @sdowneytoledo · Oct 15

The shared commitment for all kids in RI is remarkable! As @CFSchoolsRI awaits CBs, Commissioner @AlfanteGreen gathered 750 devices from across RI to ensure every student has access to a device! Thanks Sup't @HarrisonPeters, @chiachess @SeguelFL and @ewinangun for the loans!



We are slowly and safely reopening, focused first on scholars with the highest need for in-person instruction

Completed:

- ✓ Monday, 9/14: Launch of Distance Learning K-12
- ✓ Tuesday, 9/22: 5th-12th Grade MVPs began
- ✓ Tuesday, 9/29: Kindergarten and K-4 MVPs began
- ✓ Tuesday, 10/13: 1st-4th grade began

Upcoming:

- ? TBD 5-12 In-person
- ? TBD K-4 Expansion of In-person

Reopening Data

A look at COVID-19 data and how that data may inform decisions



Last time we met on 10/5: R-naught is the “spread” of the disease

The aim is to be below 1.0; RI is at 1.14 (8th highest in the US)

R_t COVID-19

[Tweet](#) [Share](#)

These are up-to-date values for R_t, a key measure of how fast the virus is growing. It's the average number of people who become infected by an infectious person. If R_t is above 1.0, the virus will spread quickly. When R_t is below 1.0, the virus will stop spreading. [Learn More](#).

[See details about the spread in Rhode Island](#)

Data Last Updated: 10/4 at 12:17PM

Latest

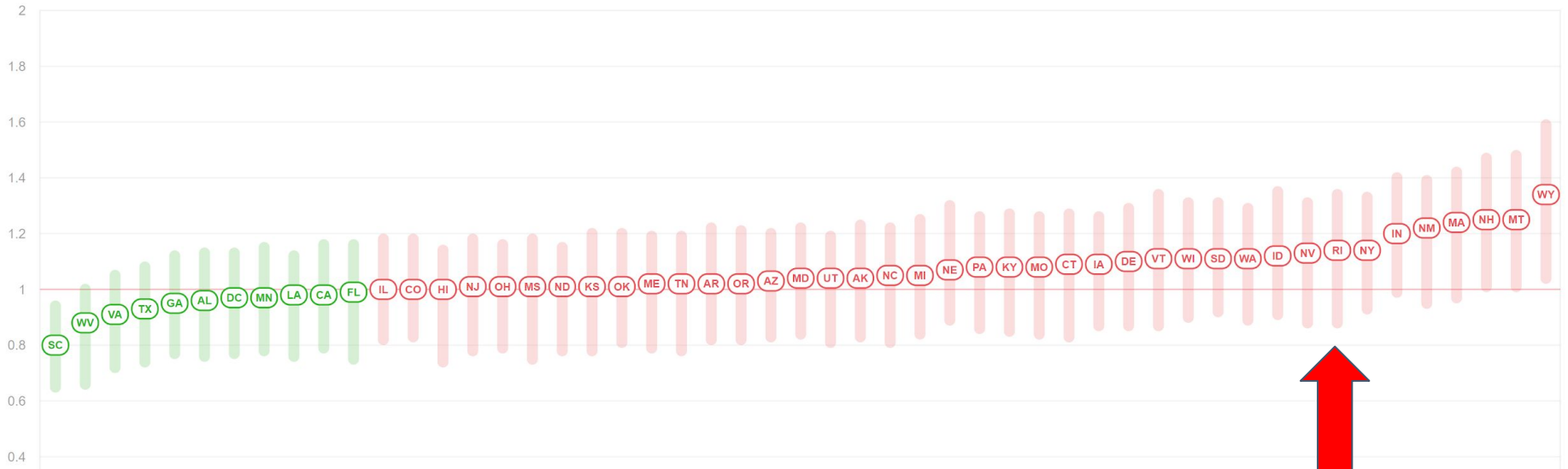
2 Weeks Ago

1 Month Ago

2 Months Ago

3 Months Ago

Filter



As of 10/24: R-naught is the “spread” of the disease

The aim is to be below 1.0; RI is at 1.27 (2nd highest in the US)

R_t COVID-19

[Tweet](#) [Share](#)

These are up-to-date values for R_t, a key measure of how fast the virus is growing. It's the average number of people who become infected by an infectious person. If R_t is above 1.0, the virus will spread quickly. When R_t is below 1.0, the virus will stop spreading. [Learn More](#).

[See details about the spread in Rhode Island](#)

Data Last Updated: 10/23 at 11:16AM

Latest

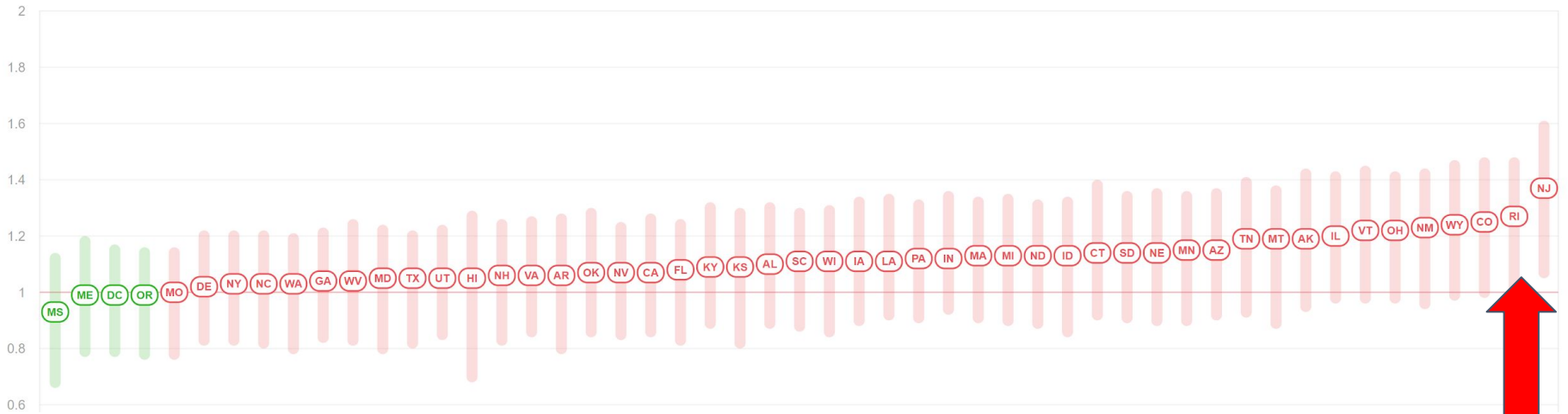
2 Weeks Ago

1 Month Ago

2 Months Ago

3 Months Ago

Filter



Reopening Data Considerations:

Municipal Data (as of 9/30, last meeting and 10/14, most recent data)

Cases/100,000

Central Falls: 181 → 217

Cumberland: 38 → 84

Lincoln: 65 → 65

Pawtucket: 113 → 156

Percent Positive

Central Falls: 6.8% → 7.6%

Pawtucket: 4.0% → 4.7%

Lincoln: 2.1% → 1.8%

Cumberland: 1.2% → 2.4%

Reopening Data Considerations:

Municipal Data in context - Massachusetts Comparison

While Massachusetts had set various reopening standards (Red, Yellow, Green), much the the state seems to be turning red, yet *school decisions appear to be made more locally*.

- Milton is now Red, but is still running a hybrid model based on consultation with their local leaders and what they are seeing in schools
- Boston set their own thresholds for opening and closing, and based on a 7-day average exceeding 5%, closed all of its schools
 - Reopening to highest needs students will happen when they have 2 weeks below 5% and phased reopening for others begins when 2 weeks below 4%

Broader picture

Schools do not appear to be drivers for virus growth



Popular

Latest

The Atlantic

IDEAS

Schools Aren't Super-Spreaders

Fears from the summer appear to have been overblown.

OCTOBER 9, 2020

Emily Oster

Economist at Brown University



SIGN IN

NPR SHOP

DONATE NOW

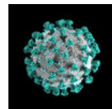
NEWS

ARTS & LIFE

MUSIC

SHOWS & PODCASTS

SEARCH



SPECIAL SERIES

The Coronavirus Crisis



Are The Risks Of Reopening Schools Exaggerated?

October 21, 2020 · 7:05 AM ET

Heard on All Things Considered

Broader picture

CDC Indicators and Thresholds

CDC indicators and thresholds for risk of introduction and transmission of COVID-19 in schools

INDICATORS	Lowest risk of transmission in schools	Lower risk of transmission in schools	Moderate risk of transmission in schools	Higher risk of transmission in schools	Highest risk of transmission in schools	BVP & Rhode Island
CORE INDICATORS						
Number of new cases per 100,000 persons within the last 14 days*	<5	5 to <20	20 to <50	50 to ≤ 200	>200	RI (CF and Pawtucket) Red
Percentage of RT-PCR tests that are positive during the last 14 days**	<3%	3% to <5%	5% to <8%	8% to ≤ 10%	>10%	Data not updated, appears red
<p>Ability of the school to implement 5 key mitigation strategies:</p> <ul style="list-style-type: none"> • Consistent and correct use of masks • Social distancing to the largest extent possible • Hand hygiene and respiratory etiquette • Cleaning and disinfection • Contact tracing in collaboration with local health department <p>Schools should adopt the additional mitigation measures outlined below to the extent possible, practical and feasible.</p>	Implemented all 5 strategies correctly and consistently	Implemented all 5 strategies correctly but inconsistently	Implemented 3-4 strategies correctly and consistently	Implemented 1-2 strategies correctly and consistently	Implemented no strategies	Meet all Five Criteria

Key Questions on Reverting:

Children's Hospital of Philadelphia Policy Lab



KEY QUESTIONS TO GUIDE DECISION-MAKING ON REVERTING TO VIRTUAL LEARNING

With colder weather, case transmission is likely to rise, and school districts will be faced with challenging decisions on when to revert to distance learning vs. continuing in-class instruction. These challenging decisions can be informed by asking a few key questions and reflecting on the ability of the school, alongside public health partners, to remediate any identified issues:

- 1) Did your school have difficulty implementing and maintaining all aspects of its school safety plan?**
- 2) How effective has your collaboration with local public health authorities been when there has been a student or teacher who is found to be COVID-positive?**
- 3) How quickly is disease transmission and test positivity accelerating in your region?** *(Note that regions that surpass 9% test positivity might consider temporary closures.)*
- 4) Has there been evidence of in-classroom transmission within your school?**
- 5) Has there been evidence of increasing linked transmission in your school or other schools in your region despite high levels of compliance with safety measures?**
- 6) Are there populations to consider for prioritized maintenance of in-school instruction (e.g., [children with learning differences or special needs](#))?**

BVP Experience



‘Providence and Central Falls are on Partial through the semester’

- Governor Raimondo, 10/14

- BVP’s Partial Plan is currently the plan we are implementing
 - K-4 in-person for those who requested it
 - 5-12 MVPs also in person
 - Distance Learning for all others K-12



BVP is actively working to design a “Partial Plus” plan to expand services

- Determine if there are additional scholars who can be identified as MVPs in grades 5-12
- Design a “Partial Plus” plan to bring back scholars in grades 5-6 next and 7-8 after that in a hybrid way (some form of programming)

Note: BVPHS is planning for full distance learning through the semester (late January)

BVP is actively trying to plan for how to honor elementary families who may want to change

- K-4 families selected Distance Learning or In-Person for the first Trimester
 - The timeline for asking parents whether they want to make a switch is early November for a December transition
- Implications around program design are *significant* if we have big shifts:
 - new cohorts will need to be created,
 - relationships re-built,
 - staffing assignments may change, and
 - program may need to shift (e.g. if so many more families opt-in, in order to maintain distancing, we may have to move to a hybrid A/B model for K-4)

BVP is also planning to move backwards:

- **Option 1:** Move back toward our Limited Plan
 - Prioritize MVPs and Kindergarten
- **Option 2:** Move to full Distance Learning for all

Closures at BVP since school reopened

10/13	MVP program closed: positive case, 4 staff members directed to quarantine
10/14-10/16	ES3 closed: positive case, 6 of 14 on-site staff members had to quarantine
10/19-10/30	ES2 K Class closed: positive case, several scholars/staff had to quarantine
10/21-11/2	HS Boys Soccer Team directed to quarantine
10/23-10/30	Several members of the HS Cross-Country Team directed to quarantine

In addition to the above closures, we have had more than a dozen other additional staff members out based on awaiting symptomatic test results or staying home with minor symptoms (as per the RIDOH Playbook)

Should BVP move backwards?

Looking back at the Children's Hospital of Philadelphia Policy Lab

Did your school have difficulty implementing and maintaining all aspects of its school safety plan?	Staffing is very challenging based on the number of people being directed to quarantine
How effective has your collaboration with local public health authorities been when there has been a student or teacher who is found to be COVID-positive?	RIDOH is clearly under-staffed to handle the volume.
Has there been evidence of in-classroom transmission within your school?	No.
How quickly is disease transmission and test positivity accelerating in your region? (Note that regions that surpass 9% test positivity might consider temporary closures.)	Very fast. Statewide 1st time test positive rate is over 11% (Source: Providence Journal, 10/23)
Has there been evidence of increasing linked transmission in your school or other schools in your region despite high levels of compliance with safety measures?	No.
Are there populations to consider for prioritized maintenance of in-school instruction (e.g., children with learning differences or special needs)?	Yes.

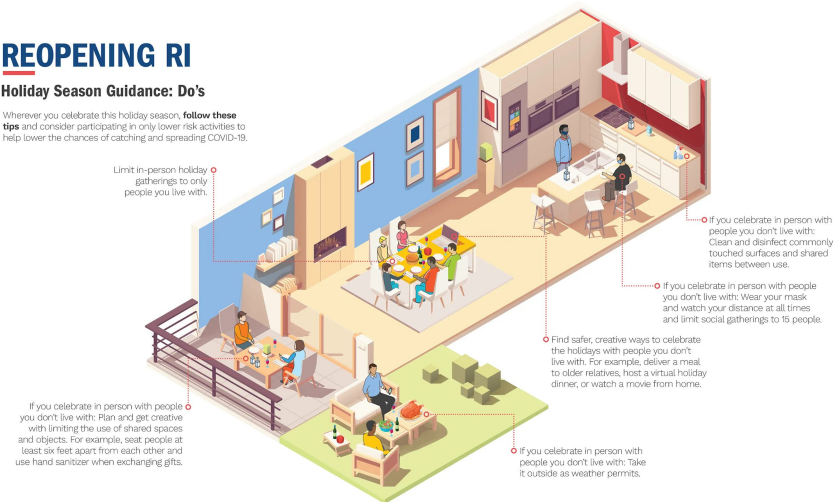
In the not-too-distant future...Holiday Planning

- Some schools are considering following the lead of some colleges and universities and go Distance Learning from Thanksgiving through the New Year to address travel quarantine issues and expected rise in virus spread
- Some schools have already announced an “extra week” after Thanksgiving and New Years to allow holiday travel but then allow for testing

REOPENING RI

Holiday Season Guidance: Do's

Whenever you celebrate this holiday season, **follow these tips** and consider participating in only lower risk activities to help lower the chances of catching and spreading COVID-19.



Discussion

