

**LCPS Board:
K-2 Dyslexia Screener Update**



Kindergarten-Grade 2 Dyslexia Screener Toolkit

Phase III - Develop a Response Plan

February Lexia
RAPID
Administration

V. Develop a Response Plan

- Short-term [Spring 2021] Intervention
- Long-term [upcoming school year] Tier 1, 2, and 3 supports.

- I. Partner with Greenfield Learning to train our academics team and K-2 Dyslexia Committee on how to internalize initial data.

Phase III
of K-2 Dyslexia
Pilot

- IV. Analyze student-specific data and identify students with potential need for additional evaluation and support.

- II. Complete data dive with internal and external partners.
- Identify overall trends in district, school, and classroom-level data.
 - Review individual student scores for potential dyslexia indicators.

- III. Communicate initial student outcomes with teachers and families.

Kindergarten -Grade 2 Dyslexia Screener Toolkit

Develop a Response Plan

Timeline Spring 2021

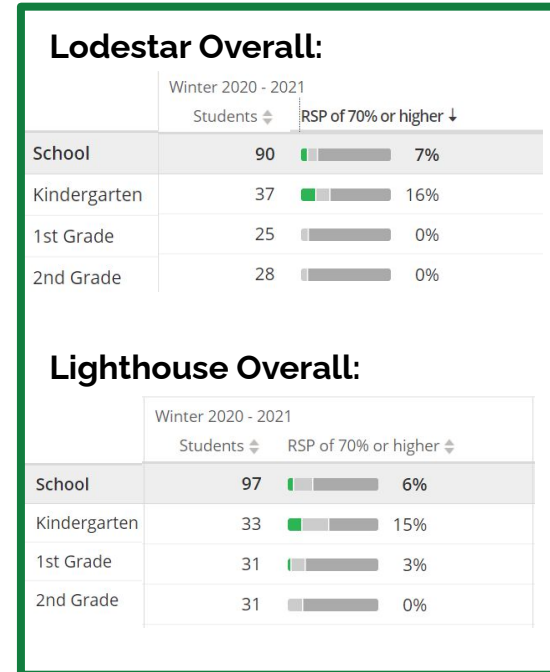
Week of 2/22	<ul style="list-style-type: none">✓ Create teacher/parent communication 1-pager for SLCs✓ Complete data training with Greenfield Learning
Week of 3/1	<ul style="list-style-type: none">✓ Finalize data dive protocol✓ Complete data dive✓ Get feedback on next steps from internal partners
Week of 3/8	<ul style="list-style-type: none">✓ Share data dive protocol with external partners✓ Host teacher focus group
Week of 3/15	<ul style="list-style-type: none">✓ Develop short-term response plan for Spring 2021✓ Develop long-term response plan for 2021-22
Week of 3/22	<ul style="list-style-type: none">● Follow-up communication around 1:1 findings with parents of students who potentially need Tier III reports

LCPS February 2021 Data Outcomes

Data Dive Protocol | II. Develop a POV

Reading Success Probability (RSP): The likelihood that students achieve grade level success by the end of the year.

Site/Grade	# of Students with an RSP of 70% or Higher	# of Students with an RSP of 31-69%	# of Students with an RSP of 30% or Lower	Total # Students Assessed
Lodestar Kinder	6	6	25	37
Lodestar 1st Grade	0	2	23	25
Lodestar 2nd Grade	0	2	26	28
Lighthouse Kinder	5	10	18	33
Lighthouse 1st Grade	1	5	25	31
Lighthouse 2nd Grade	0	5	26	31



LCPS February 2021 Data

Data Dive Protocol | II. Develop a POV

Our February 2021 LCPS HIGH-LEVEL Takeaways:

- **LCPS students enter kindergarten with a wide range of foundational literacy skills.**
- **Over time at LCPS, the range of student skill stabilizes, but our overall proficiency data decreases.**

- **We are currently supporting our youngest students through EL Education in two ways:**
 - ◆ Developing content-knowledge in vocabulary (as evidenced by vocabulary pairs data).
 - ◆ Following auditory steps and directions (as evidenced by following directions data).
- **We have an URGENT need to support the majority of our students in Tier 1 Foundational Literacy instruction that addresses the following:**
 - ◆ Phonological awareness
 - ◆ Letter sounds
 - ◆ Spelling
 - ◆ Word reading



Kindergarten -Grade 2 Dyslexia Screener Toolkit

Develop a Response Plan | Short Term

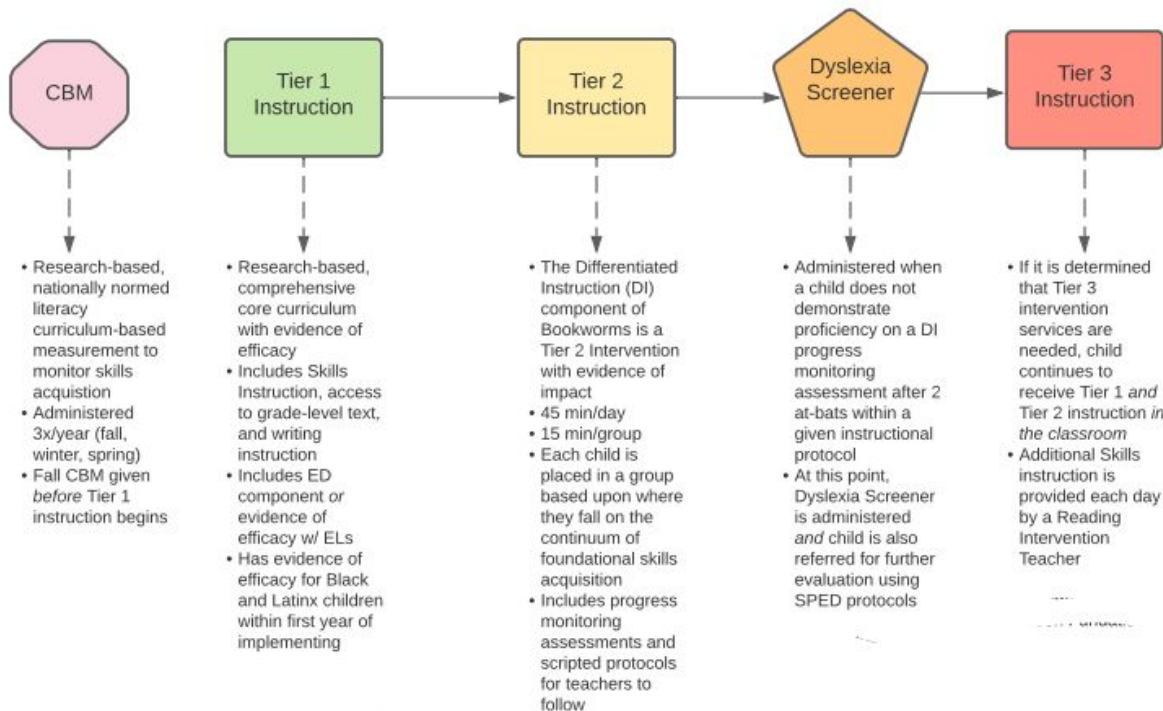
Short-Term Response Plan | Spring & Summer 2021

Differentiated Support	<ul style="list-style-type: none">• Launched Lexia Core5 in all K-5 classrooms in January 2021
Teacher Training	<ul style="list-style-type: none">• Teachers complete a "Science of Reading" Professional Development session on 3/26
Family Engagement	<ul style="list-style-type: none">• Hosting a "Reading U" Parent Information Night in April [Date TBD] to support parents with at-home strategies for reading development.
Spring Screening	<ul style="list-style-type: none">• Complete round 2 of Lexia RAPID assessment in May and measure RSP growth.
Summer School	<ul style="list-style-type: none">• Offer students who performed at 15 RSP or lower on Lexia RAPID priority enrollment in LCPS Summer School.• Partnering with BookWorms to hold an in-person "Literacy Launch" for robust foundational literacy instruction at LCPS Summer School.• Exploring options for a summer 1:1 virtual tutoring model for our highest need students.

Kindergarten -Grade 2 Dyslexia Screener Toolkit

Develop a Response Plan | Long Term

Long-Term Response Plan | 2021-2022 School Year



Reenvisioning our K-2 Foundational Literacy Model in Fall 2021