

Executive Director's Report



December 2020

School Updates

ACHIEVEMENT.

- New, more stringent laws are making it more challenging for charters to be renewed
- Showing academic growth in our students through assessments is imperative
- Our team is strategic planning on how to better support our students (focus group, survey to teachers and parents, looking at support curriculum)
- Build on our current resources

PLANNING.

We are looking at structure and planning for next year. We are updating job descriptions, looking at programs and any adjustments in structure needed..

PROFESSIONAL DEVELOPOMENT.

Last staff meeting of 2020 last week. Preparing for January PD-breakouts & motivational speaker.

ENRICHMENT.

- ☑ "Tier 1" started allowing the purchase of **family-led in-person activities and products**
- ☑ All vendor services (ie. classes, lessons, tutoring, driver's training, coaching, team sports, swimming lessons, etc.) and **all staff interaction must remain virtual**, until further notice.
- ☑ Working on "Tier 2", responsive plan for enabling in-person vendor services for the spring semester beginning in January. Met with stakeholders.

SOUTH

NORTH

New Community Resources Page

Our school Website now has resources listed by county for our families. Thank you to our community liaisons for gathering all of this information and making it available.



Enrollment Update



Enrollment Update from Principal Clarksville Charter School

Current Enrollment by County/Gradelevel as of 12/02/20

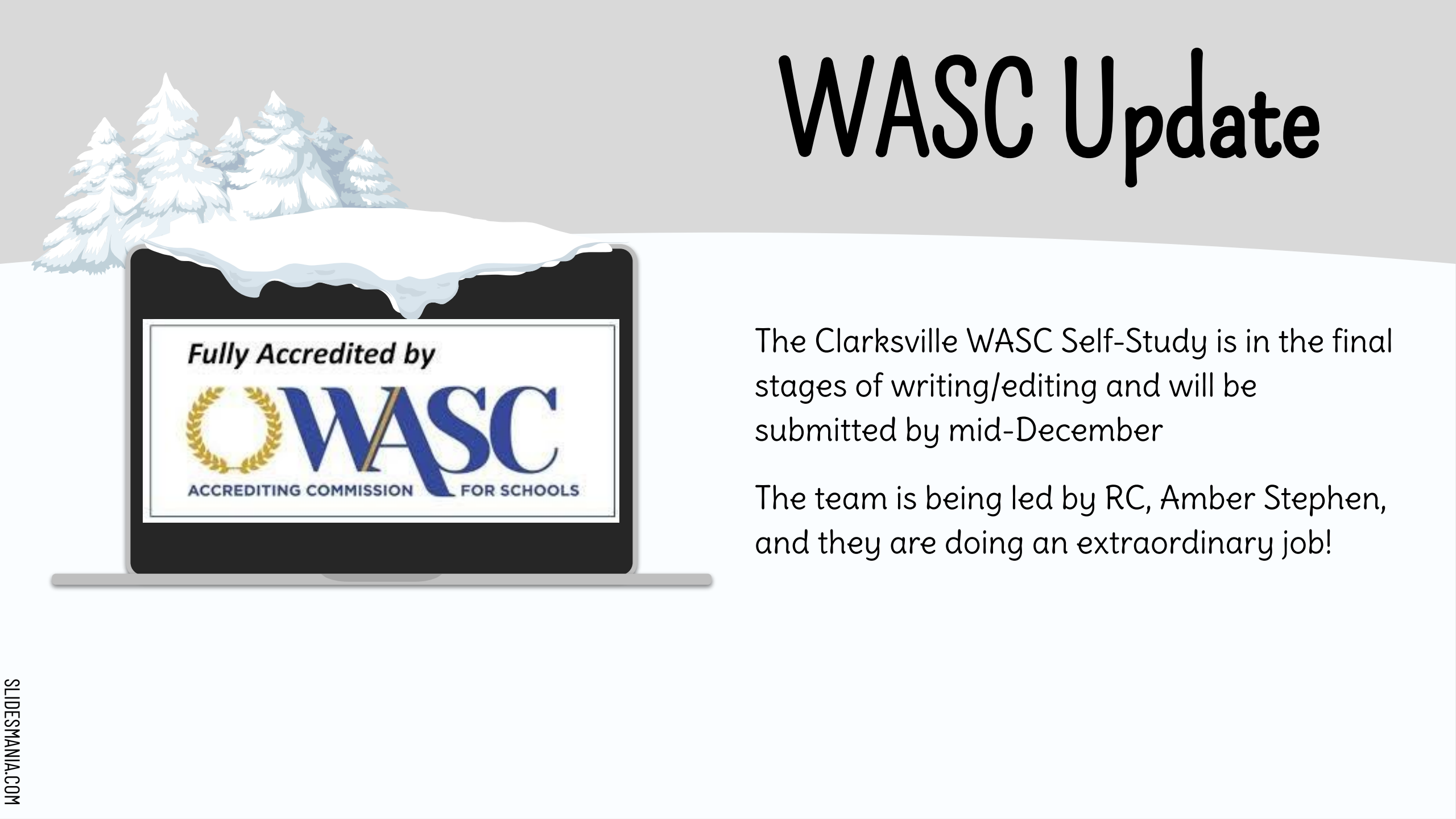
Grade	Alpine	Amador	El Dorado	Placer	Sacramento	Totals
TK	0	0	14	0	1	15
KN	0	7	65	7	9	88
1	1	3	69	8	7	88
2	0	10	82	12	10	114
3	0	12	64	8	14	98
4	0	9	68	6	13	96
5	1	8	66	9	6	90
6	0	5	68	9	8	90
7	0	6	78	12	9	105
8	0	6	66	9	8	89
9	0	2	59	9	10	80
10	0	5	29	12	7	53
11	0	2	34	9	11	56
12	0	1	37	10	8	56
Curent Total	2	76	799	120	121	1118
Variance	2	-9	-55	-7	-24	-93

FCMAT Update

Executive Directors and some members of the Admin Team met with FCMAT teams on November 3 & 4. The meetings went very well and were designed to be an introduction and discussion about the process. Follow up meetings/requests will follow over the upcoming months. Jotforms will be sent to sampling of students to collect needed data.

Overall, it has been a very positive experience, and FCMAT made it clear that their goals are to look into the claims of the requesting County Superintendents and provide direction and support to the schools.

WASC Update



Fully Accredited by



The Clarksville WASC Self-Study is in the final stages of writing/editing and will be submitted by mid-December

The team is being led by RC, Amber Stephen, and they are doing an extraordinary job!

LLMF Update

Staff:

- Zoom accounts
- Google Voice accounts
- Microsoft Accounts
- Hot Spots mailed to all staff
- Additional screens, headsets, doc cams, tools for online instruction
- Recording equipment to be used for professional quality instructional videos and communication

Students:

- New options of online platforms
- Additional curriculum for student support
- Loaner laptops
- Hot spots for students in need
- Microsoft Accounts
- SEL Curriculum & Support

Other:

- Data Consultants



AB1505

- Charter renewal for middle track schools is based on:
 - State and local indicator data, along with other data sources, to determine academic achievement: post-secondary outcomes, and/or verified data
 - Verified data: AB 1505 requires authorizers to consider “verified data” for renewals of charter schools that fall within the low-performing and middle-performing categories. The STAR Assessment is a verified data source
 - Post-secondary outcomes: includes data collected through a source such as the National Student Clearinghouse, graduate surveys, student interviews
- Renewal will more explicitly align charter goals and outcomes to state dashboard priorities



STAR Assessment Information

- Three assessment windows this year
 - Fall: September 1st - September 30th
 - Winter: January 11th - February 19th
 - Spring: April 12th - May 25th
- Test scoring was re-calibrated this year to better align with CAASPP scoring
 - Target students for intervention earlier
 - Better predictor of how students will score on high-stakes testing in the Spring

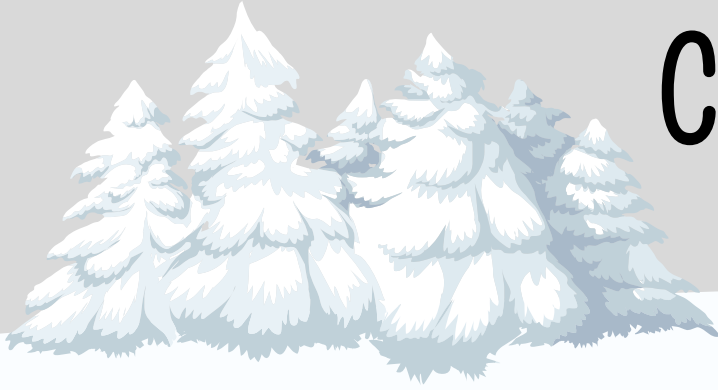


Clarksville STAR Assessment Information

Participation Rates

	Reading	Math
Clarksville	96%	95%

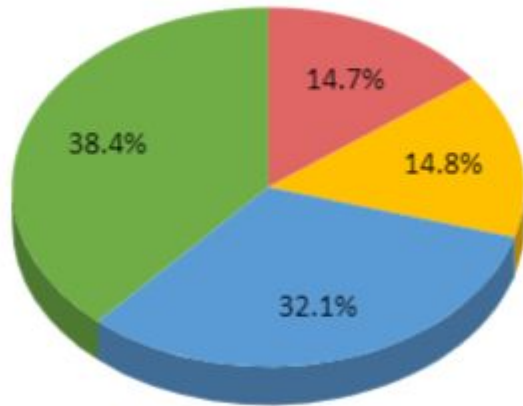
We are proud of this, particularly given the circumstances with COVID, and changed learning environments within the home.



Clarksville STAR Assessment Information

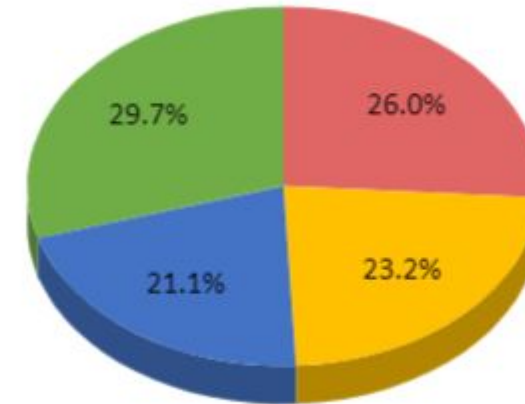
- Reading: 71% of students at or above standard
- Math: 51 % of students at or above standard

Clarksville Reading Scores - Fall 2020

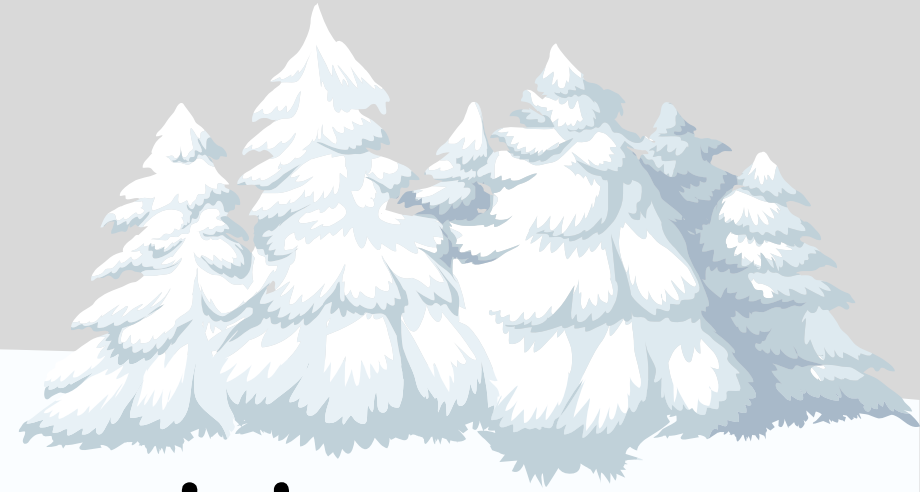
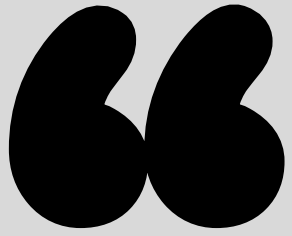


Urgent Intervention On Watch Standard Met Standard Met/Exceeded

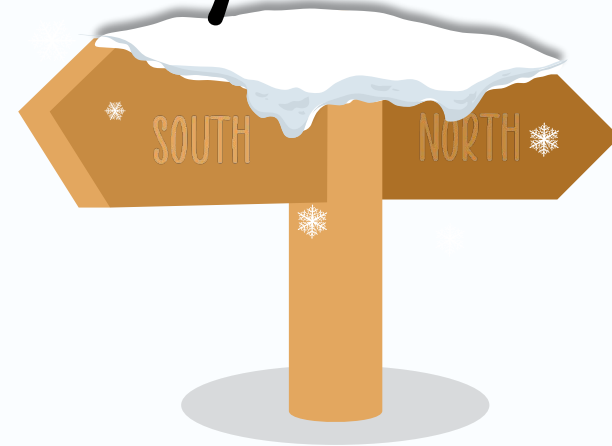
Clarksville Math Scores - Fall 2020



Urgent Intervention On Watch Standard Met Standard Met/Exceeded



All students can learn and succeed, but not in the same way and not on the same day.



— William G. Spady

Thank you!

Warm holiday wishes to you and your families.



We appreciate your service to our school.

