



## Clarksville Charter School

### Regular Schedule Board Meeting

---

#### Date and Time

Wednesday July 21, 2021 at 6:30 PM PDT

#### Location

Join Zoom Meeting

<https://sequoiagrove-org.zoom.us/j/97355146967>

Meeting ID: 973 5514 6967

One tap mobile

+16699006833,,97355146967# US (San Jose)

+14086380968,,97355146967# US (San Jose)

Dial by your location

+1 669 900 6833 US (San Jose)

+1 408 638 0968 US (San Jose)

+1 346 248 7799 US (Houston)

+1 253 215 8782 US (Tacoma)

+1 312 626 6799 US (Chicago)

+1 646 876 9923 US (New York)

+1 301 715 8592 US (Washington DC)

Meeting ID: 973 5514 6967

Find your local number: <https://sequoiagrove-org.zoom.us/u/acJqEcbl0p>

---

The mission of Clarksville Charter School is to develop the individual gifts of students in El Dorado County and adjacent counties to become critical thinkers, responsible citizens and innovative leaders prepared for academic and real-life achievement in the 21st Century. The mission will be accomplished through quality, personalized,

standards-based education which could include online coursework, offline textbook work, project-based learning, and unique hands-on and experiential learning experiences facilitated in partnership with students, parents, staff, and community.

## Agenda

	Purpose	Presenter	Time
<b>I. Opening Items</b>			<b>6:30 PM</b>
<b>A.</b> Record Attendance			1 m
<b>B.</b> Call the Meeting to Order		Keri Dalebout	1 m
<b>C.</b> Approval of the Agenda (p. 1-4)	Vote	Keri Dalebout	1 m
<b>D.</b> Public Comments		Keri Dalebout	2 m
<b>E.</b> Approve Minutes (p. 5-10)	Approve Minutes	Keri Dalebout	1 m
<b>F.</b> Executive Director's Report (p. 11-26)		Jenell Sherman	10 m
<b>II. Governance</b>			<b>6:46 PM</b>
<b>A.</b> Board Member Appointment Emily Allen reapplied for position.	Vote	Keri Dalebout	5 m
<b>B.</b> Governing Board Vacancy Clarksville Charter School has an opening for one board member. Prior board meetings voted on a working group to interview and recommend a CCS board member.	FYI	Jenell Sherman	2 m
<b>C.</b> Upcoming Compliance Items (p. 215-216)	FYI	Jenell Sherman	5 m
<b>D.</b> Governing Board Self Evaluation	Discuss	Keri Dalebout	20 m
<b>III. Finances</b>			<b>7:18 PM</b>
<b>A.</b> Education Protection Account Budget 2021-22	Vote	Darlington Ahaiwe	10 m
<b>IV. Operations</b>			<b>7:28 PM</b>

	Purpose	Presenter	Time
<b>A.</b> Organizational Chart	Vote	Jenell Sherman	5 m
<b>B.</b> Employee Handbook Amendment	Vote	Jenell Sherman	5 m
<b>V. Academic Excellence</b>			<b>7:38 PM</b>
<b>A.</b> New Vendor Contract	Vote	Jenell Sherman	5 m
<b>VI. Closing Items</b>			<b>7:43 PM</b>
<b>A.</b> Board of Director's Comments & Requests	Discuss		2 m
<b>B.</b> Announcement of Next Regular Scheduled Board Meeting	Vote	Keri Dalebout	1 m
The Next Regular Scheduled Board Meeting is August 18, 2021 at 6:30 PM.			
<b>C.</b> Adjourn Meeting	Vote	Keri Dalebout	1 m

Public Comment Rules: Members of the public may address the Board on agenda or non-agenda items through the teleconference platform, Zoom. Zoom does not require the members of the public to have an account or login. Please either utilize the chat option to communicate to the administrative team of your desire to address the Board or simply communicate orally your desire to address the Board when the Board asks for public comments. Speakers may be called in the order requests are received. Comments are limited to 2 minutes each, with no more than 15 minutes per single topic. If a member of the public utilizes a translator to address the Board, those individuals are allotted 4 minutes each. If the Board utilizes simultaneous translation equipment in a manner that allows the Board to hear the translated public testimony simultaneously, those individuals are allotted 2 minutes each. By law, the Board is allowed to take action only on items on the agenda. The Board may, at its discretion, refer a matter to school staff or calendar the issue for future discussion.

Note: The Governing Board encourages those with disabilities to participate fully in the public meeting process. If you need a disability-related modification or accommodation, including auxiliary aids or services, to participate in the public meeting, please contact the Governing Board Office at (562) 584-0427 at least 48 hours before the scheduled board meeting so every reasonable effort can be made to accommodate you. (Government Code § 54954.2; Americans with Disabilities Act of 1990, § 202 (42 U.S.C. § 12132)).

# Coversheet

## Approve Minutes (p. 5-10)

**Section:** I. Opening Items  
**Item:** E. Approve Minutes (p. 5-10)  
**Purpose:** Approve Minutes  
**Submitted by:**  
**Related Material:** Minutes for Regular Scheduled Board Meeting on June 14, 2021

APPROVED



## Clarksville Charter School

### Minutes

#### Regular Scheduled Board Meeting

---

#### Date and Time

Monday June 14, 2021 at 6:30 PM

---

#### Topic: CCS Board Meeting

Time: Jun 14, 2021 06:30 PM Pacific Time (US and Canada)

Join Zoom Meeting

<https://zoom.us/j/97941194462>

Meeting ID: 979 4119 4462

One tap mobile

+16699006833,,97941194462# US (San Jose)

+12532158782,,97941194462# US (Tacoma)

Dial by your location

+1 669 900 6833 US (San Jose)

+1 253 215 8782 US (Tacoma)

+1 346 248 7799 US (Houston)

+1 312 626 6799 US (Chicago)

+1 646 558 8656 US (New York)

+1 301 715 8592 US (Washington DC)

Meeting ID: 979 4119 4462

Find your local number: <https://zoom.us/u/aea2rcvvol>

The mission of Clarksville Charter School is to develop the individual gifts of students in El Dorado County and adjacent counties to become critical thinkers, responsible citizens and

innovative leaders prepared for academic and real-life achievement in the 21st Century. The mission will be accomplished through quality, personalized, standards-based education which could include online coursework, offline textbook work, project-based learning, and unique hands-on and experiential learning experiences facilitated in partnership with students, parents, staff, and community.

---

**Directors Present**

Emily Allen (remote), Kathleen Burwell-Callero (remote), Kelley Laliberte (remote), Keri Dalebout (remote), Lisa Jobe (remote)

**Directors Absent**

*None*

**Guests Present**

Darcy Belleza (remote), Darcy Belleza (remote), Darlington Ahaiwe (remote), Dr. Amanda Johnson (remote), Jenell Sherman (remote), Kaela Haydu (remote), Katie Royer (remote)

---

**I. Opening Items**

**A. Record Attendance**

**B. Call the Meeting to Order**

Emily Allen called a meeting of the board of directors of Clarksville Charter School to order on Monday Jun 14, 2021 at 6:39 PM.

**C. Approval of the Agenda (p. 1-4)**

Lisa Jobe made a motion to approve the Agenda with date correction in item 5C.  
Keri Dalebout seconded the motion.  
The board **VOTED** unanimously to approve the motion.

**D. Closed Session**

Kelley Laliberte made a motion to move into closed session at 6:41 PM.  
Kathleen Burwell-Callero seconded the motion.  
The board **VOTED** unanimously to approve the motion.

**E. Announcement of Any Action Taken in Closed Session**

Emily Allen announced that no action was taken during closed session.  
Kathleen Burwell-Callero motioned to move out of closed session at 6:50 PM.  
Lisa Jobe seconded the motion.  
The Board voted unanimously to approve the motion.

**F.**

## Public Comments

No public comments.

### G. Approve Minutes (p. 5-10)

Kelley Laliberte made a motion to approve the minutes from Regular Scheduled Board Meeting on 05-27-21.

Keri Dalebout seconded the motion.

The board **VOTED** unanimously to approve the motion.

### H. Executive Director's Report (p. 11-26)

Jenell Sherman presented the *Executive Director's Report*.

1. Enrollment- 1436 students currently enrolled, goal is 1635 students by August 2021
2. Hiring- 56 teachers returning, 11 new hires, 2 openings
3. The Grove-
  - launch date is July 1st
  - email migration is underway
  - hiring is complete but may expand as needed
  - Roseville and Sacramento offices opening soon
  - Sequoia Grove Charter Alliance has 2 board member vacancies (hope to fill in late August)
  - Tech orders are arriving, Sequoia Grove Charter Alliance is taking over unfulfilled Tech orders from this school year. Royce Gough briefly explained the global technology shortage.
  - Thursday, June 17th at 6:00 PM is their next Board Meeting
  - Lisa Jobe asked if student activity could take place at the new offices. Clarksville families can only have an event at the Clarksville Library. It is the only resource center.
4. Congratulations to Clarksville Charter School for a 6-year accreditation renewal from Western Association of Schools and Colleges (WASC)!

## II. Finance

### A. May Financials (p. 27-52)

Keri Dalebout made a motion to approve the May Financials.

Lisa Jobe seconded the motion.

Darlington Ahaiwe presented the May Financials.

Emily Allen asked about pg 35 of board packet- YTD Percentage of Change compares beginning and end of year YTD percentage (May 1 balance to June 30).

The board **VOTED** unanimously to approve the motion.

**B. Annual Budget**

Lisa Jobe made a motion to approve the Annual Budget.

Keri Dalebout seconded the motion.

Emily Allen asked what the savings will be with not having to borrow money at the end of the year.

Darlington Ahaiwe noted \$412k overall expenses for Sale of Receivables.

The board **VOTED** unanimously to approve the motion.

**C. Shared Executive Personnel Memorandum of Understanding for Julie Haycock-Cavender and Jenell Sherman (p. 57-58)**

Kelley Laliberte made a motion to approve the Shared Executive Personnel Memorandum of Understanding for Julie Haycock-Cavender and Jenell Sherman .

Kathleen Burwell-Callero seconded the motion.

Jenell Sherman presented Shared Executive Personnel Memorandum of Understanding for Julie Haycock-Cavender and Jenell Sherman.

Attachments will come back for final approval in the fall.

The board **VOTED** unanimously to approve the motion.

**D. Executive Director Salary Schedule**

Keri Dalebout made a motion to approve Executive Director Salary Schedule.

Kathleen Burwell-Callero seconded the motion.

Darcy Belleza presented the Executive Director Salary Schedule.

The board **VOTED** unanimously to approve the motion.

**E. Shared Staff Memorandum of Understanding**

Lisa Jobe made a motion to approve Shared Staff Memorandum of Understanding.

Kelley Laliberte seconded the motion.

Jenell Sherman presented the Shared Staff Memorandum of Understanding.

Attachments coming back to the board for final approval in the fall.

The board **VOTED** unanimously to approve the motion.

**F. Shared Staff Memorandum of Understanding with Central for High School Virtual Academy**

Kathleen Burwell-Callero made a motion to approve the Shared Staff Memorandum of Understanding with Central for High School Virtual Academy.

Kelley Laliberte seconded the motion.

Jenell Sherman presented the Shared Staff Memorandum of Understanding with Central for High School Virtual Academy.



The attachments will be brought back to the Board in the fall for final approval.  
Emily Allen inquired about how balanced staffing was with HSVA. Jenell Sherman explained it was fairly balanced.

All students who wanted to attend HSVA and JHVA classes were able to.  
The board **VOTED** unanimously to approve the motion.

#### **G. Services Agreement with Sequoia Grove Charter Alliance**

Keri Dalebout made a motion to approve Services Agreement with Sequoia Grove Charter Alliance.

Lisa Jobe seconded the motion.

Jenell Sherman presented the Services Agreement with Sequoia Grove Charter Alliance.

Procopio and Young, Minney, and Corr have both reviewed the agreement.

The board **VOTED** unanimously to approve the motion.

#### **H. Stipends Chart**

Lisa Jobe made a motion to approve the Stipends Chart.

Kathleen Burwell-Callero seconded the motion.

Jenell Sherman presented the Stipends Chart.

The board **VOTED** unanimously to approve the motion.

### **III. Operations**

#### **A. Resolution to Change Email Addresses and Other Contact Information on all Policies and Documents**

Kathleen Burwell-Callero made a motion to approve Resolution to Change Email Addresses and Other Contact Information on all Policies and Documents.

Lisa Jobe seconded the motion.

Jenell Sherman presented Resolution to Change Email Addresses and Other Contact Information on all Policies and Documents.

The board **VOTED** unanimously to approve the motion.

#### **B. Conflict Waiver for Representation of Sequoia Grove Charter Alliance**

Lisa Jobe made a motion to approve the Conflict Waiver for Representation of Sequoia Grove Charter Alliance.

Kathleen Burwell-Callero seconded the motion.

Jenell Sherman presented Conflict Waiver for Representation of Sequoia Grove Charter Alliance.

The board **VOTED** unanimously to approve the motion.

#### **C. Animals at School Policy**

Kathleen Burwell-Callero made a motion to approve the Animals at School Policy.

Kelley Laliberte seconded the motion.

Jenell Sherman presented the Animals at School Policy.

The board **VOTED** unanimously to approve the motion.

**D. Safe Return to In-Person Instruction Plan**

Darcy Belleza introduced the Safe Return to In-Person Instruction Plan.

**E. Public Hearing of Safe Return to In-Person Instruction Plan**

Kathleen Burwell-Callero made a motion to go into Public Hearing of Safe Return to In-Person Instruction Plan at 8:13 PM.

Lisa Jobe seconded the motion.

Emily Allen asked where the safety guidelines came from? Darcy Belleza answered that the January COVID-19 Plan came from California Department of Education guidelines.

This template is more of a broad narrative. We can revisit and revise the template in six months.

Kathleen Burwell-Callero made a motion to end the Public Hearing at 8:21 PM.

Kelley Laliberte seconded the motion.

The board **VOTED** unanimously to approve the motion.

**IV. Academic Excellence**

**A. Local Control and Accountability Plan 2021-2022**

Keri Dalebout made a motion to approve the Local Control and Accountability Plan 2021-2022 including Expenditures.

Lisa Jobe seconded the motion.

Darcy Belleza presented the Local Control and Accountability Plan 2021-2022 including Expenditures.

The board **VOTED** unanimously to approve the motion.

**B. Budget Overview for Parents 2021-2022**

Lisa Jobe made a motion to approve the Budget Overview for Parents 2021-2022.

Kathleen Burwell-Callero seconded the motion.

Darcy Belleza presented the Budget Overview for Parents 2021-2022.

The board **VOTED** unanimously to approve the motion.

**C. Student Freedom of Speech and Expression Policy**

Lisa Jobe made a motion to approve the Student Freedom of Speech and Expression Policy.

Kelley Laliberte seconded the motion.

Jenell Sherman presented the Student Freedom of Speech and Expression Policy.

Emily Allen asked if this could become an issue with the Central schools because we share High School Virtual Academy with them. She wondered if a Central teacher would handle an issue the same way as one of our teachers.

Darcy Belleza noted that this policy protects the school but also describes students' rights.

The board **VOTED** unanimously to approve the motion.

**D. Sexual Health and HIV Prevention Policy**

Keri Dalebout made a motion to approve the Sexual Health and HIV Prevention Policy.

Kelley Laliberte seconded the motion.

Jenell Sherman presented the Sexual Health and HIV Prevention Policy.

The board **VOTED** unanimously to approve the motion.

**E. Parent and Family Involvement Policy**

Kathleen Burwell-Callero made a motion to approve the Parent and Family Involvement Policy.

Kelley Laliberte seconded the motion.

Jenell Sherman presented the Parent and Family Involvement Policy.

The board **VOTED** unanimously to approve the motion.

**F. Homeless Education Policy Review**

The staff has conducted an annual review of the Homeless Education Policy. No updates have been made.

**V. Governance**

**A. Board Calendar for the 2021-2022 School Year (p. 213-214)**

Lisa Jobe made a motion to approve the Board Calendar for the 2021-2022 School Year.

Keri Dalebout seconded the motion.

Jenell Sherman presented the Board Calendar for the 2021-2022 School Year.

Board meetings will be Wednesdays at 6:30 PM.

The board **VOTED** unanimously to approve the motion.

**B. Discussion and Potential Action on Stipend Amounts for Board Members**

The Board stipend amount will stay the same as this year.

**C. Governing Board Vacancy**

Darcy Belleza announced that we have no applicants at this time. Waiting until later in August may be a good time to reach out to parents.

Emily Allen will send in her resume.

**D. Upcoming Compliance Items (p. 215-216)**

Jenell Sherman shared the Upcoming Compliance Items provided by Darlington Ahaiwe.

**E. Conflict of Interest Policy**

Jenell Sherman reviewed the Conflict of Interest Policy. The current Board members will sign in July. New members will sign as they begin their term.

Using position as board member for financial or personal gain internally is not allowed. Outside influence is allowable and encouraged - i. e. letter of recommendation for college, job, etc.

**VI. Closing Items**

**A. Board of Director's Comments & Requests**

Emily Allen reminded board members of the Self-Evaluations due in July.

Board Member Self-Evaluations may need to be conducted in open session. Royce Gough suggested it may be done at the Board Retreat. Staff will confirm protocol.

Emily Allen discussed Online Governance Academy. Asked all board members to have it completed by next board meeting.

**B. Announcement of Next Regular Scheduled Board Meeting**

Kathleen Burwell-Callero made a motion to approve the Next Regular Scheduled Board Meeting is Wednesday, July 21 at 6:30 PM. .

Kelley Laliberte seconded the motion.

The board **VOTED** unanimously to approve the motion.

**C. Adjourn Meeting**

Lisa Jobe made a motion to adjourn the meeting.

Kathleen Burwell-Callero seconded the motion.

The board **VOTED** unanimously to approve the motion.

There being no further business to be transacted, and upon motion duly made, seconded and approved, the meeting was adjourned at 9:14 PM.

Respectfully Submitted,  
Emily Allen

Prepared by:  
Katie Royer

Noted by:

---

Board Secretary

Public Comment Rules: Members of the public may address the Board on agenda or non-agenda items through the teleconference platform, Zoom. Zoom does not require the members of the public to have an account or login. Please either utilize the chat option to communicate to the administrative team of your desire to address the Board or simply communicate orally your desire to address the Board when the Board asks for public comments. Speakers may be called in the order requests are received. Comments are limited to 2 minutes each, with no more than 15 minutes per single topic. If a member of the public utilizes a translator to address the Board, those individuals are allotted 4 minutes each. If the Board utilizes simultaneous translation equipment in a manner that allows the Board to hear the translated public testimony simultaneously, those individuals are allotted 2 minutes each. By law, the Board is allowed to take action only on items on the agenda. The Board may, at its discretion, refer a matter to school staff or calendar the issue for future discussion.

Note: The Governing Board encourages those with disabilities to participate fully in the public meeting process. If you need a disability-related modification or accommodation, including auxiliary aids or services, to participate in the public meeting, please contact the Governing Board Office at (562) 584-0427 at least 48 hours before the scheduled board meeting so every reasonable effort can be made to accommodate you. (Government Code § 54954.2; Americans with Disabilities Act of 1990, § 202 (42 U.S.C. § 12132)).

# Coversheet

## Executive Director's Report (p. 11-26)

<b>Section:</b>	I. Opening Items
<b>Item:</b>	F. Executive Director's Report (p. 11-26)
<b>Purpose:</b>	FYI
<b>Submitted by:</b>	
<b>Related Material:</b>	ED Report July 2021 Clarksville (1).pdf





CLARKSVILLE  
CHARTER SCHOOL

# Executive Director Report -July 2021-

# Today's Agenda

- Personnel Update
- New Websites
- Legislative Update
- Enrollment
- SGCA Update
- Back to School: Plans for August



# Personnel Update

Effective July 1, 2021

## CEO

Royce Gough transitioned out of the Director of Operations for the Schools to the CEO of SGCA.

## CFO

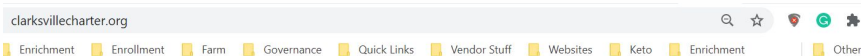
Dr. Amanda Johnson transitioned from the Dir. of Ed. Services to the Chief Fiscal Officer for the Schools.

## Interim Dir. of Ed Services

Megan Nason was promoted from Asst. Director of Ed. Services to Interim Dir. of Ed. Services. We will post for the permanent position in the coming months.

# New Websites launched July 1st.

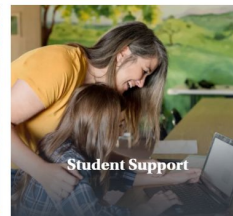
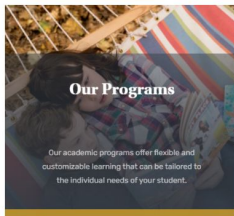
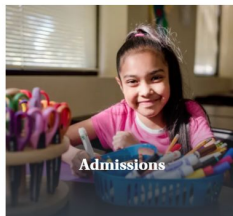
## clarksvillecharter.org



### INTRODUCTION

## Welcome to Clarksville Charter School

Clarksville Charter School is a tuition-free, public charter school serving transitional kindergarten through 12th grade students in El Dorado, Amador, Alpine, Sacramento and Placer Counties. We take great pride in being able to offer our students flexible personalized learning experiences through our many unique and dynamic programs.



# New Legislation

- Charter Renewal Extension
- New Charter Moratorium
- Synchronous Learning Opportunities
- TK Cut-off Changes
- AB 104



# New Ed. Code

## **NEW EDUCATION CODE 47607.4**

Due to the lack of testing data for the past two years, the governor has *extended our charter renewals by two years*. Here are our new charter renewal dates for our family of schools:

- Feather River & Winship:  
7/1/2021-6/30/2026 (Just renewed, no extension)
- Lake View: 7/1/2019-6/30/2024, renewal now 2026
- Clarksville: 7/1/2020-6/30/2025, renewal now 2027

## **NEW EDUCATION CODE 47612.7(a)**

*Extended the moratorium on new charters for three additional years.*

The moratorium expiration was moved from January 1, 2022 to January 1, 2025.



- *Updated Independent Study Policy*
- *Updated Master Agreements*

**Special Board Meetings will be Required in August 2021 for the Board's approval**



# Synchronous Learning Opportunities

*TK-3rd:  
daily synchronous  
opportunity  
provided by HST*

*4-8th:  
weekly  
synchronous  
opportunity  
provided by HST  
(& an additional  
daily interaction  
with a school staff)*

*9-12th:  
weekly  
synchronous  
opportunity  
provided by HST*

Good News! These are **opportunities** provided and student attendance is not mandated.

# Transitional Kindergarten Changes

*Current:  
5th birthday  
between 9/2 and 12/2*

*'22-'23:  
5th birthday  
between 9/2  
and 2/2*

*'23-'24:  
5th birthday  
between 9/2  
and 4/2*

*'24-'25:  
5th birthday  
Between 9/2  
and 6/2*

There are no changes to the 2021-22 school year.

# AB 104 : Immediate

**The bill has three major provisions:**

1. Student Retention must be allowed

2. High School students grades can be changed from a letter grade to a pass or fail if requested by the family

3. High School coursework and graduation exemptions provided



# Enrollment Update



**Current Enrollment**

1532 Students

98 Students

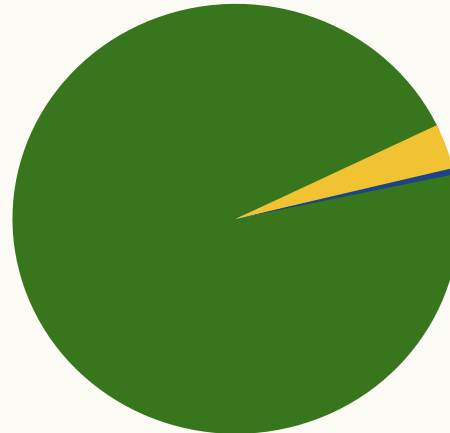
**In-Process**

219 students

**Waitlisted**

5 Students

**Openings**



**Target Enrollment 1635**

# Sequoia Grove

## *Charter Alliance*

Royce Gough, CEO

# Transition of Services

## TRANSITION FROM THINKSUIE

Services concluded between June 25th & June 30th depending on the department.

Transition Plan complete.

## TRANSITIONED TO SEQUOIA GROVE

Services began July 1st with SGCA. All Sequoia Grove employees began July 1st.

First week: Staff focused on Orientation & Safe Schools training

Second Week: Focused on training and beginning operations

Third Week (Current Week): Full force in each Dept.

# Sequoia Grove Buildings

## **Sequoia Grove North**

1544 Eureka Rd.  
In Roseville

-Office space available for  
Staff

## **Sequoia Grove South**

50 & Watt Ave.  
In Sacramento

-Tech, Records, and the  
Lending Library housed  
here  
-Office space available for  
Staff

## **Clarksville Resource Center**

4818 Golden Foothill  
In El Dorado Hills

-Open to all Clarksville  
families

# PRODUCT ORDERING TIMELINE

*Today:  
75 % Pre-Orders  
Processed (in 5 days)*

*July 19:  
Returning  
Students place  
new orders*

*August 2nd:  
New Students  
sign MAs &  
place orders*

Punch Out begins August 2nd: Amazon & Office Depot  
Rainbow Resource (in final stages) BookShark (tentatively later this year)



# Streamlining Processing

## What are we doing to Expedite Processing?

- Limiting the number of Product Vendors to streamline ordering and increase efficiency
- Converting Credit Card vendors to Purchase Orders
- Changing the workflow of order assignments so processors can place orders in batches by vendors

# On-Boarding Community Partners

Community Partners, formerly called Vendors, must be entered into the new ordering system after they complete the application and supply the necessary documentation.

- ◉ Developing Processes and Procedures
- ◉ Creating the vendor application
- ◉ Applications will be sent to all active vendors from the 20-2021 school year, and those who have been recently suggested parents & HST
- ◉ Reaching out to vendors that have contacted us since the transition

# Lending Library

## **New Library System: Follet**

- Phenomenal search function
- Bridge with Pathways for up-to-date enrollment data
- 24/7 EBook Access
- Use of Remote Check In/Out at LL Park Days

## **Process & Timeline**

- Finalizing Contract with Follet
- Organize all the resources moved from Rosin Ct. to SG Buildings
- Catalogue and tag over 11,000 items
- Target Open Date: October 1st

## **Adding 3 New Park Locations for a Total of 14**

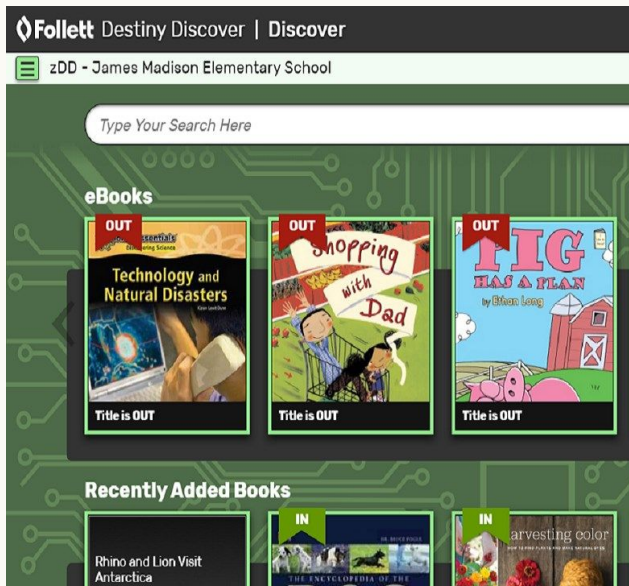
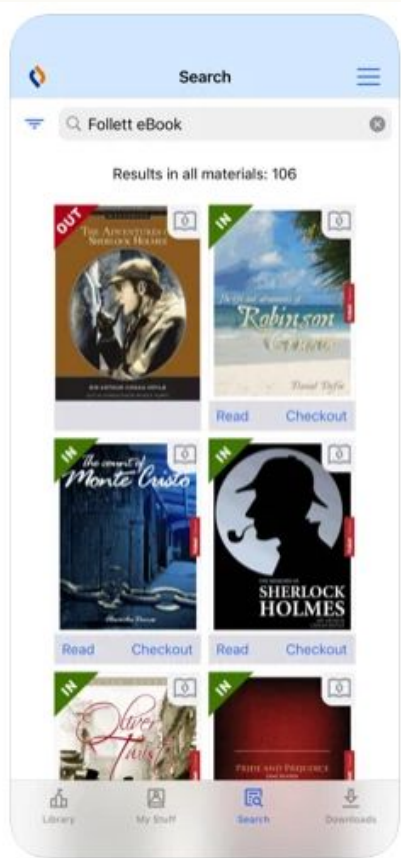
-West Sacramento

-Placerville

-Auburn



# Library Systems





# Resource Center Update

Open Date: August 16, 2021

With Regular Hours of:

Monday- Friday 9am-3pm\*

\*Closed Noon-1pm for Lunch







# Board Vacancy

*Currently 2 Openings for our School Board*

# Back to School

Teachers return August 2nd

8/2-8/15 Professional Development &  
connecting with new families

Students return August 16th

Transition Packets available for families  
who have not received curriculum yet  
Park Days begin July 21st to build community

# Community Support

- Summer Edition Newsletter
  - 3 part series on how to prepare for your homeschool year
  - [Family Liaison Welcome and Intro](#)
- Park Days are being scheduled
  - sample curriculum boxes, meet new friends
- Consumable Curriculum Exchange
  - Provide opportunities for families to receive duplicate and withdrawn materials from the Lending Library
  - families can exchange consumable items
- [Waiting Game Ideas](#)
- [Free Homeschool Resources](#)



# Thank You!

*Any questions?*



# Coversheet

## Upcoming Compliance Items (p. 215-216)

**Section:** II. Governance  
**Item:** C. Upcoming Compliance Items (p. 215-216)  
**Purpose:** FYI  
**Submitted by:**  
**Related Material:** Compliance Calendar for July 2021.png

Due Date	Description	Completed By	Board Must Approve	Signature Required
Jul-07	<b>CARES Act - 4th Quarter Expenditure Report</b> - Reporting activity April 1, 2021 - June 30, 2021. The CARES Act includes multiple pots of federal funding to limit or defray the impact of COVID-19. The CARES Act Reporting application was created by the California Department of Education to gather required data for purposes of state and federal report on CARES Act and other COVID-19 related funds.	Charter Impact	No	No
Jul-15	<b>Final Federal Expenditure and ERMHS Report (Special Education)</b> - Financial reporting for year-end actuals are due for El Dorado Charter SELPA members.	Charter Impact	No	No
Jul-22	<b>Complete Consolidated Application reporting - Spring</b> - The Consolidated Application (ConApp) is used by the California Department of Education (CDE) to distribute categorical funds from various state and federal programs to county offices, school districts, and direct-funded charter schools throughout California. Annually, in May, each local educational agency (LEA) submits the spring release of the application to document participation in these programs and provide assurances that the district will comply with the legal requirements of each program.	Charter Impact with North support	Yes	No
Jul-30	<b>CALPADS EOY 1, 2, 3, and 4</b> - Course Completion, Program Eligibility/Participation, Homeless Students, Student discipline, Cumulative Enrollment, Student Absence Summary and SpED	North	No	Yes
Jul-31	<b>Federal Cash Management - Period 1</b> - The Title I, Part A; Title I, Part D, Subpart 2; Title II, Part A; Title III LEP; Title III Immigrant; and Title IV programs under the Elementary and Secondary Education Act of 1965 (ESEA), as amended by the ESSA, will utilize the Federal Cash Management program. Charter schools that are awarded a grant under any of these programs must submit the CMDC report for a particular quarter in order to receive an apportionment for that quarter; CDE will apportion funds to LEAs whose cash balance is below a certain threshold.	Charter Impact	No	No
Jul-31	<b>Annual review of organization's Fiscal Policies</b> - Board approved fiscal policies define the organization's financial operations and internal controls to ensure compliance with industry and government regulations. An annual review is recommended to ensure compliance with current procedures and annually updated regulations. If updates are necessary, revised policies may be documented and presented for Board approval.	Charter Impact with North support	No	No
Aug-01	<b>Administer English Language Proficiency Assessment for California (ELPAC) Initial Assessment</b> - Based on the results of the home language survey, every pupil in California whose native language is not English is required to be tested within 30 days of the start of school. Be sure to note your school's 30th day of instruction and test all ELPAC students before that date. This reporting is used for students' academic performance and state and federal accountability reporting requirements.	North	No	No
Aug-27	<b>4-year Adjusted Cohort Graduation Rate (ACGR)</b> - High School graduation data is extracted from CALPADS on 8/27/2021 to calculate an ACGR value. Graduation data must be submitted into CALPADS before this deadline to ensure data is available to the state for accurate calculations.	North	No	No
Aug-27	<b>CALPADS EOY 1, 2, 3 and 4 Amendment Window Deadline</b> - Course completion data for grades 7-12, CTE participants, concentrators, completers, program eligibility/participation, homeless student counts, student discipline, cumulative enrollment and student absence data must be submitted to CDE by 8/27/2021.	North	No	No
Set by Authorizer	<b>Unaudited Actual Reports</b> - Annual unaudited financial statements for the preceding year are due by date set by the charter authorizer (no later than September 15th).	Charter Impact	Yes	Yes



# Coversheet

## Education Protection Account Budget 2021-22

**Section:** III. Finances  
**Item:** A. Education Protection Account Budget 2021-22  
**Purpose:** Vote  
**Submitted by:**  
**Related Material:** Clarksville EPA Budget FY2122.pptx



# Clarksville Charter School

## The Education Protection Account (EPA)

# Background

- The EPA funding is a component of an LEA's total LCFF entitlement as calculated in the Principal Apportionment.
- There are no statutory requirements on how EPA funds should be allocated and each LEA decides locally how to best allocate funds.
- California Constitution requires all districts, counties and charter schools to report on their websites an accounting of how much money was received from the EPA and how that money was spent.
- A board approved expenditure plan is required so the expenditures can be appropriately applied.

# 2021-22 EPA Budget

Description	Object Codes	Amount
<b>AMOUNT AVAILABLE FOR THIS FISCAL YEAR</b>		
Adjusted Beginning Fund Balance	9791-9795	0.00
Revenue Limit Sources	8010-8099	320,000.00
TOTAL AVAILABLE		320,000.00
<b>EXPENDITURES AND OTHER FINANCING USES</b>		
<b>(Objects 1000-7999)</b>	<b>Function Codes</b>	
Instruction	1000-1999	320,000.00
Instruction-Related Services		
Other Outgo	9000-9999	0.00
TOTAL EXPENDITURES AND OTHER FINANCING USES		320,000.00
<b>BALANCE (Total Available minus Total Expenditures and Other Financing Uses)</b>		0.00

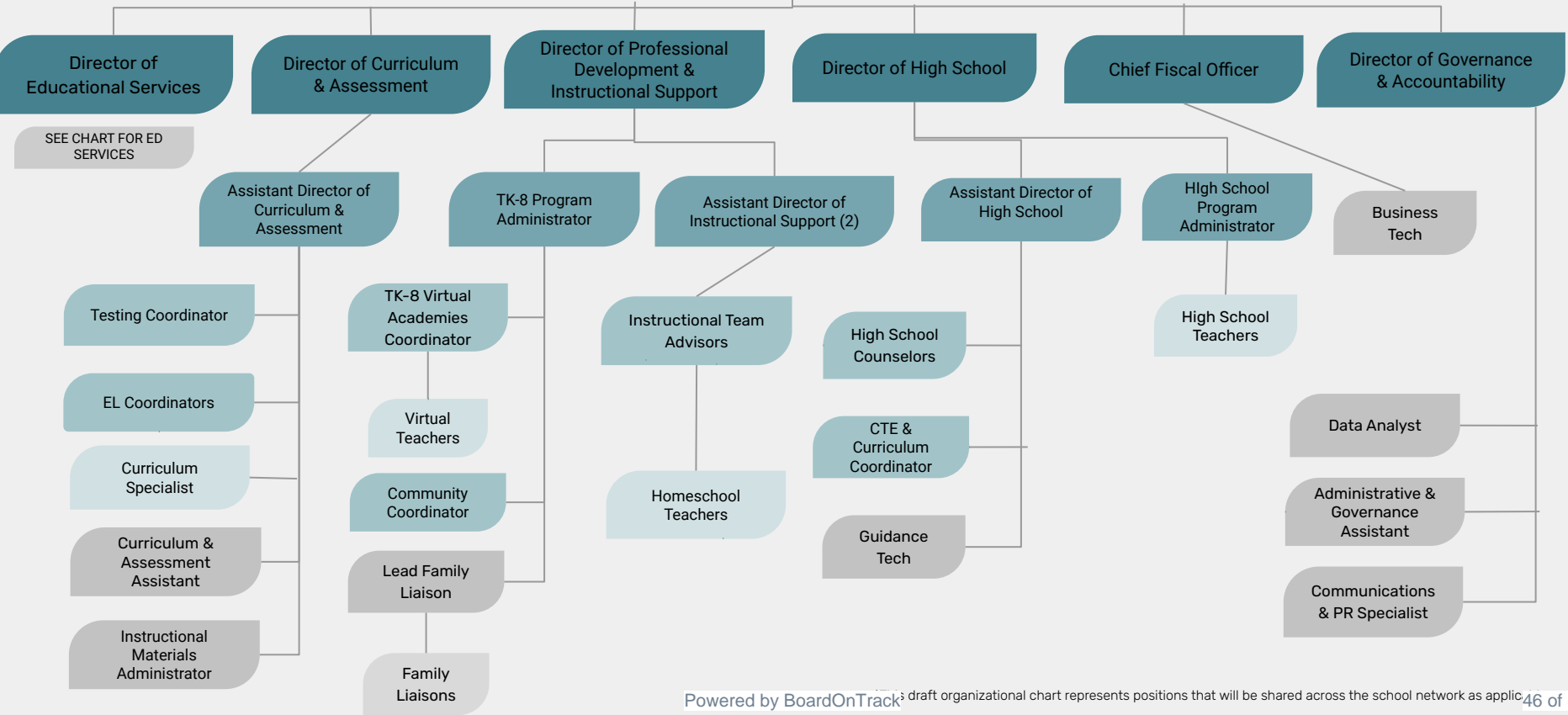
# Coversheet

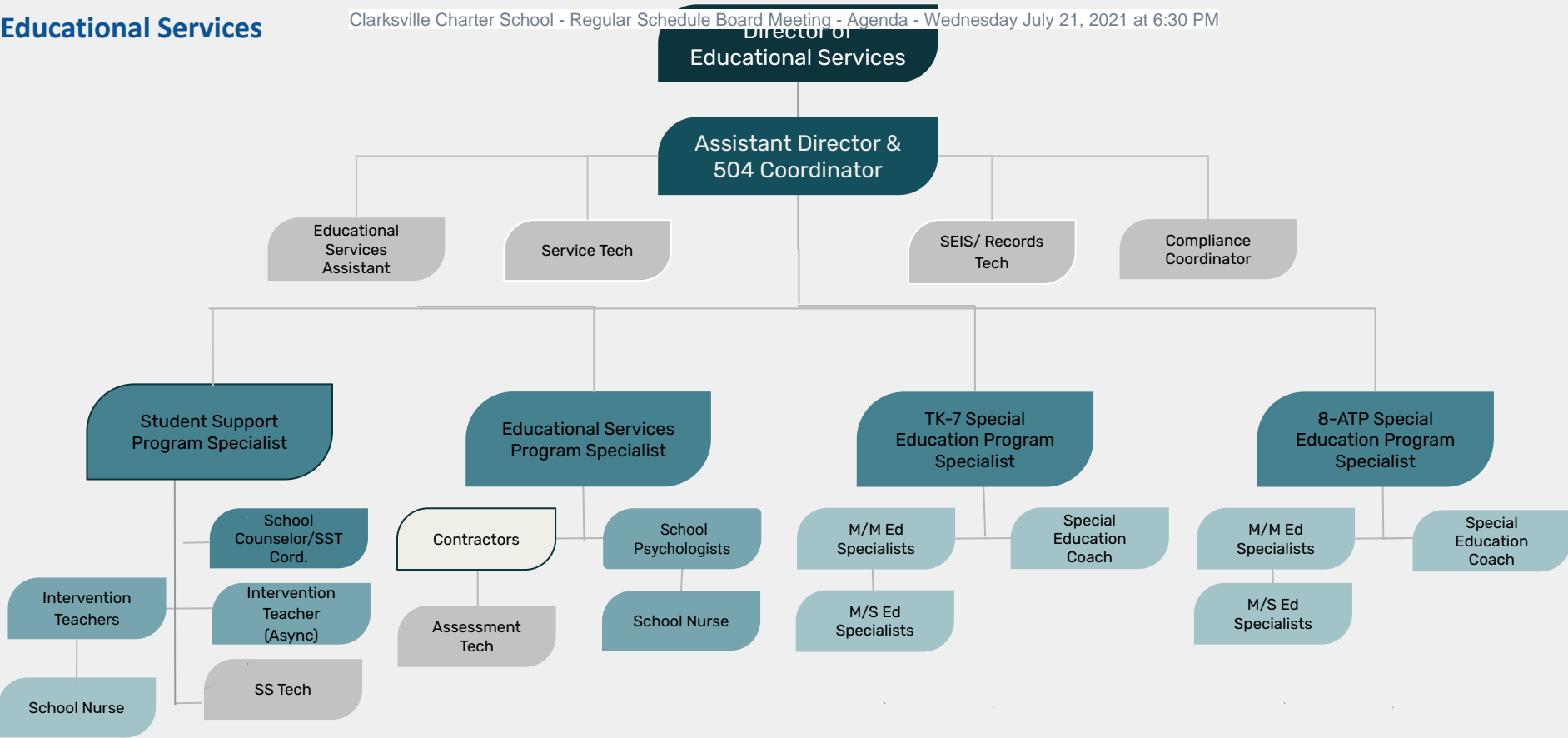
## Organizational Chart

**Section:** IV. Operations  
**Item:** A. Organizational Chart  
**Purpose:** Vote  
**Submitted by:**  
**Related Material:** Updated Org Chart\_0721.pdf

# Governing Board

## Executive Directors





# Coversheet

## Employee Handbook Amendment

**Section:** IV. Operations  
**Item:** B. Employee Handbook Amendment  
**Purpose:** Vote  
**Submitted by:**  
**Related Material:** SGCA Employee Handbook Clarksville 2021-2022,v.2.pdf

**BACKGROUND:**

Employee Handbook was approved by the Governing Board in June 2021. Slight amendment on page 23 regarding the use of personal vehicles.

**RECOMMENDATION:**

Recommended for board approval.





# SEQUOIA GROVE CHARTER ALLIANCE

## Employee Handbook

July 1, 2021 –  
June 30, 2022





## Welcome to **Sequoia Grove Charter Alliance**

Welcome to Clarksville Charter School, Feather River Charter School, Lake View Charter School, and Winship Community Schools, Members of the Sequoia Grove Charter Alliance! Herein below, "your School" is defined as the charter school in which you are contractually employed.

We are happy to have you join us. We believe our School is truly unique and serves a diverse group of talented and hardworking students. We regard the work we do as being of utmost importance. Therefore, we have very high expectations for professionalism and performance for each one of our employees. All employees should treat all individuals, including students, teachers, administrators, volunteers, and family members, with respect, and approach all situations as opportunities to learn.

This handbook has been written to provide you with an overview of our Schools, its personnel policies and procedures, and your benefits as an employee.

This handbook is intended to explain in general terms policies that most often apply to your day-to-day work activities. This handbook cannot anticipate every situation or answer every question about employment, and it is not an employment contract. Employees are expected to read this handbook thoroughly upon receipt, to know and abide by the policies outlined herein, and as revised over time, throughout their employment. No School guideline, practice, manual or rule may alter the "at-will" status of your relationship with your School.

In order to retain necessary flexibility in the administration of its policies, procedures and benefits, your School reserves the right to change, deviate from, eliminate, or revise the handbook, except for the at-will provisions, at any time, without notice, whenever your School determines that such action is warranted. For these reasons, we urge you to check with your supervisor to obtain current information regarding the status of any particular policy, procedure or practice. This handbook supersedes and replaces all previous personnel policies, practices and procedures.

We welcome you and wish you great success and fulfillment at your School.

**CONTENT**

<b>SECTION 1 – GENERAL</b>	<b>4</b>
<b>SECTION 2 – PHILOSOPHY</b>	<b>5</b>
CORE PURPOSE	5
CORE VALUES	5
PERMISSION-TO-PLAY VALUES	5
STRATEGIC ANCHORS	5
<b>SECTION 3 – EMPLOYMENT</b>	<b>6</b>
EMPLOYMENT APPLICATIONS	6
EQUAL EMPLOYMENT OPPORTUNITY	6
HARASSMENT	6
What is Harassment?	6
What is abusive conduct/workplace bullying?	6
What is Retaliation?	6
Responsibility	6
Reporting	6
Investigation/Complaint Procedure	7
Conclusion	7
Training Requirements	7
AT WILL EMPLOYMENT	7
OPEN COMMUNICATION POLICY	7
LACTATION ACCOMMODATION POLICY	7
PUBLIC RELATIONS	8
WHISTLEBLOWER POLICY	8
<b>SECTION 4 – THE EMPLOYMENT PROCESS</b>	<b>9</b>
EMPLOYEE STATUS AND CLASSIFICATIONS	9
Exempt	9
Non-Exempt	9
Certificated Employee	9
Classified Employee	9
WORK SCHEDULES	9
WORKWEEK AND WORKDAY	9
VIRTUAL ACADEMY CLASSROOM EMPLOYMENT CONDITIONS	9
Position Responsibilities	9
Training	9
Worksites	9
SPECIAL EDUCATION TEACHING EMPLOYMENT CONDITIONS	9
Special Education Teachers/ Case Managers	9
Training	9
Worksites	9
ATTENDANCE AND PUNCTUALITY	9
PROFESSIONAL DEVELOPMENT	10
TIME RECORDS (NON-EXEMPT EMPLOYEES)	10
OVERTIME	10
OFF THE CLOCK WORK	10
Reporting Missed, Late or Short/Interrupted Meal and Rest Periods	10
PAYDAYS	10
PAYROLL WITHHOLDINGS	10
<b>SECTION 5 - CONDITIONS OF EMPLOYMENT</b>	<b>11</b>
IMMIGRATION LAW COMPLIANCE	11
CREDENTIAL REQUIREMENTS	11
CRIMINAL BACKGROUND CHECK	11
CHILD ABUSE AND NEGLECT REPORTING ACT	11
PERSONNEL FILES	11
CHANGES IN EMPLOYEE INFORMATION	11
<b>SECTION 6 – PERFORMANCE</b>	<b>12</b>
PERFORMANCE EVALUATIONS	12
Teachers	12
Classified Staff	12
<b>SECTION 7 – LEAVES</b>	<b>13</b>
FAMILY MEDICAL LEAVE ACT/CALIFORNIA FAMILY RIGHTS ACT	13
NEW PARENT LEAVE ACT	13
PREGNANCY DISABILITY LEAVE	13
ADDITIONAL LEAVES	14
MILITARY SPOUSE LEAVE***	14
WORKERS' COMPENSATION LEAVE	14
BEREAVEMENT LEAVE	14
JURY DUTY LEAVE	14
TIME OFF TO VOTE	14
SCHOOL ACTIVITIES LEAVE***	14
SCHOOL APPEARANCE/SUSPENSION LEAVE	14
CRIME VICTIM LEAVE	14
DOMESTIC VIOLENCE LEAVE/SEXUAL ASSAULT LEAVE***	15
MILITARY LEAVE	15
ADULT LITERACY LEAVE***	15
ORGAN DONOR / BONE MARROW DONOR LEAVE*	15
DRUG & ALCOHOL REHABILITATION LEAVE***	15
VOLUNTEER CIVIL SERVICE LEAVE	15
CIVIL AIR PATROL LEAVE**	15
<b>SECTION 8 – BENEFITS</b>	<b>16</b>
SCHOOL HOLIDAYS	16
PAID TIME OFF (PTO) - A BASIS ONLY	16
SICK LEAVE	16
Eligible Employees	16
Permitted Use	16
Allotment	16
Limits on Use	16
Notification	16
Termination	16
No Discrimination or Retaliation	16
PAID SICK LEAVE DONATION POLICY	17
Personal Hardship	17
Eligibility	17
Requests for Donations	17
Donations of Paid Leave	17

Valuation of Donated PSL	17
INSURANCE BENEFITS	17
COBRA BENEFITS	17
SOCIAL SECURITY/MEDICARE	17
STATE DISABILITY INSURANCE (WAGE SUPPLEMENT)	17
PAID FAMILY LEAVE (WAGE SUPPLEMENT)	17
WORKER'S COMPENSATION INSURANCE	17
<b>SECTION 9 – EMPLOYEE COMMUNICATIONS POLICY</b>	<b>18</b>
COMMUNICATIONS POLICY	18
No Expectation of Privacy	18
Professional Use of Communication Systems Required	18
Offensive and Inappropriate Material	18
Solicitations	18
Licenses and Fees	18
Games and Entertainment Software	18
Confidential Information	18
Copyrights and Trademarks	18
Maintenance and Security of the System	18
Violations of this Policy	18
Amendment and Modification of this Policy	18
SOCIAL MEDIA POLICY	18
Personal or Professional Blogs	19
EQUIPMENT POLICY	19
Laptop Computers	19
CELL PHONE POLICY	19
Telephone Calls and Texting	19
NO SOLICITATION/DISTRIBUTION POLICY	19
Definitions	19
Employee Responsibility	20
ANTI-NEPOTISM POLICY	20
Policy Statement	20
Definitions	20
Procedures	20
Responsibilities	20
VIOLENCE IN THE WORKPLACE	20
<b>SECTION 10 – STANDARDS OF CONDUCT</b>	<b>21</b>
PERSONAL STANDARDS	21
TEACHER-STUDENT INTERACTIONS	21
Boundaries Defined	21
Acceptable and Unacceptable Behavior	21
Unacceptable Behaviors	21
Acceptable and Recommended Behaviors	21
Reporting	21
Investigating	21
Consequences	21
CUSTOMER & PUBLIC RELATIONS	21
PROHIBITED CONDUCT	21
CONFLICTS OF INTEREST	22
Outside Employment	22
Policy Statement	22
Procedure	22
EXPENSE REIMBURSEMENT POLICY	22
Personal Cell Phones	22
Internet Expenses	22
Utilities	22
Travel	23
Other Expenses	23
Reporting	23
POLICY CONFIRMING RESTRICTION ON THE PROVISION OF FUNDS OR OTHER	
THINGS OF VALUE TO STUDENTS, PARENTS OR GUARDIANS	23
Policy Statement	23
Procedures	23
<b>SECTION 11 – SAFETY</b>	<b>24</b>
SUBSTANCE AND ALCOHOL POLICY	24
SMOKING	24
PARKED VEHICLES	24
PERSONAL AUTOMOBILE	24
PERSONAL PROPERTY	24
SAFETY POLICY	24
ERGONOMICS	24
CHEMICAL EXPOSURE WARNING	24
<b>SECTION 12 – TERMINATION</b>	<b>25</b>
VOLUNTARY TERMINATION	25
INVOLUNTARY TERMINATION	25
EXIT INTERVIEWS	25
VERIFICATION AND REFERENCE POLICY	25
EMPLOYEE HANDBOOK ACKNOWLEDGEMENT	26

## SECTION 1 – GENERAL

This handbook has been written to serve as a guide for the employer/employee relationship. This handbook applies to faculty and staff at your School. This handbook contains only general information and guidelines. It is not intended to be comprehensive or to address all the possible applications of, or exceptions to, the general policies and procedures described. For that reason, if you have any questions concerning eligibility for a particular benefit, or the applicability of a policy or practice to you, you should address your specific questions to your supervisor or Human Resources. You are responsible for reading, understanding, and complying with the provisions of this handbook. Our objective is to provide you with a work environment that is constructive to both personal and professional growth.

Neither this handbook nor any other School document confers any contractual right, either express or implied, to remain in your School employ, nor does it guarantee any fixed term or condition of your employment. Except as otherwise provided in an executed employment agreement, your employment is not for any specified period of time and may be terminated at will, with or without cause and without prior notice, by your School or you may resign for any reason at any time.

No supervisor or other representative of your School except the Executive Director or designee, with the approval of the Board of Directors, has the authority to enter into any agreement for employment for any specified period of time, or to make any agreement contrary to the above. Further, the procedures, practices, policies and benefits described herein may be modified or discontinued from time to time with or without advance notice. We will try to inform you of any changes as they occur. Up to date policies are found in the Schools' governing board websites.

## SECTION 2 – PHILOSOPHY

### CORE PURPOSE

Your School exists to educate and inspire children to realize their potential to become extraordinary and active members of society.

### CORE VALUES

The following three core values are what distinguish your School from other schools:

- Mentoring – to inspire students to forge their paths in the world
- Passionate – to strive for excellence
- Collaborative – to be active, engaging, and contributing team members

### PERMISSION-TO-PLAY VALUES

The following Permission-to-Play values are minimum behavioral standards that all employees must exhibit consistently:

- Innovative
- Dynamic
- Results-oriented
- Data-driven
- Extraordinary
- Confident
- Energetic

### STRATEGIC ANCHORS

To ensure success of our core purpose and core values, your School will use the following two strategic anchors to inform every decision the School makes and the basis for how decisions and actions will be evaluated:

- Academic achievement through relevant curricula, clear expectations, and shared accountability
- Relationship building through mentorship and consistent communication

## Schoolwide ..... Learner Outcomes



	<p><i>Our students are...</i></p>
	<p><i>Navigators of the Digital World</i> Proficient in the use of technology, media, and online resources</p>
	<p><i>Self-Directed and Motivated</i> Able to set attainable goals to achieve academic success</p>
	<p><i>Personalized Learners</i> Thriving in the education style that best fits their individual needs</p>
	<p><i>Independent Critical-Thinkers</i> Able to problem-solve, take ownership, and apply their knowledge</p>
	<p><i>Responsible Citizens</i> Actively seeking knowledge of local and global issues</p>
	<p><i>Effective Communicators</i> Articulating their thinking with confidence</p>



## SECTION 3 – EMPLOYMENT

### EMPLOYMENT APPLICATIONS

We rely upon the accuracy of information contained in the employment application and the accuracy of other data presented throughout the hiring process and employment. Any misrepresentations, falsifications, or material omissions in any of this information or data may result in exclusion of the individual from further consideration for employment or, if the person has been hired, termination of employment.

### EQUAL EMPLOYMENT OPPORTUNITY

Your School is an equal opportunity employer. In accordance with applicable law, your School prohibits discrimination, harassment, intimidation, and bullying based on actual or perceived ancestry, age, color, disability, gender, gender identity, gender expression, nationality, race or ethnicity, religion, sex, sexual orientation, actual or potential parental, family, marital status, or association with a person or a group with one or more of these actual or perceived characteristics. Your School will ensure that applicants and employees are treated in all aspects of employment without unlawful discrimination because of these or any other protected basis. Such aspects of employment include, but are not limited to, recruitment, hiring, promotion, demotion, transfer, layoff, termination, compensation, and training. Additionally, in accordance with applicable law, your School prohibits all forms of unlawful harassment of a sexual or other discriminatory nature. Any conduct contrary to this policy is prohibited. This policy applies to all applicants and employees of your School.

To comply with applicable laws ensuring equal employment opportunities to qualified individuals with a disability, your School will make a good faith effort to provide reasonable accommodations for the known physical or mental limitations of an otherwise qualified applicant or employee with a disability, unless undue hardship would result to your School. An applicant or employee who believes he or she requires an accommodation in order to perform the essential functions of the job should contact Human Resources and request such an accommodation, specifying what accommodation he or she needs to perform the job. Your School will analyze the situation, engage in an interactive process with the individual, and respond to the individual's request. If you believe you have been subjected to discrimination, please follow the complaint procedure outlined below.

### HARASSMENT

It is the policy of your School to ensure equal employment opportunity without discrimination, harassment, intimidation, or bullying based on actual or perceived ancestry, age, color, disability, gender, gender identity, gender expression, nationality, race or ethnicity, religion, sex, sexual orientation, actual or potential parental, family, marital status, or association with a person or a group with one or more of these actual or perceived characteristics. Your School prohibits any such discrimination or harassment. In addition, we prohibit abusive conduct/workplace bullying in the work environment. It is our mission to provide a professional work and learning environment free of harassment, discrimination and/or workplace bullying that maintains equality, dignity, and respect for all. This policy protects all employees of the School as well as interns, volunteers, and potential employees (applicants). All employees of the School are required to abide by this policy, regardless of position or status, including supervisors, administration, and co-workers. In addition, this policy prohibits unlawful harassment by third parties, including students, parents, vendors or other third parties, who have workplace contact with our employees. This policy applies to all applicants and employees (or other listed individuals), whether related to conduct engaged in by fellow employees or someone not directly connected to your School (e.g. an outside vendor, consultant or customer). Conduct prohibited by these policies is unacceptable in the workplace and in any work-related setting outside the workplace, such as during business or field trips, meetings and business or school-related social events.

#### What is Harassment?

Harassment can take many forms. As used in this Employee Handbook, the terms "discrimination" and "harassment" includes all unwelcome conduct that comprises the following behavior pertaining to any of the above protected categories or characteristics:

- Offensive remarks, comments, jokes or slurs pertaining to an individual's race, religion, sex, sexual orientation, gender or gender identity or gender expression, age, national origin or ancestry, disability, citizenship, veteran status, or any other protected status as defined by law or regulation whether verbally or by electronic means including email, and/or text messages
- Offensive sexual remarks, sexual advances, flirtations, or requests for sexual favors regardless of the gender of the individuals involved and whether verbally or by electronic means
- Offensive physical conduct, including, but not limited to, touching, blocking normal movement or interfering with another's work regardless of the gender of the individuals involved, including, but not limited to threats of harm, violence or assault
- Offensive pictures, drawings or photographs or other communications, including email, text messages, or other forms of electronic communication
- Holding work functions in inappropriate venues, such as a strip-club
- Sex or gender based practical jokes, sexual favoritism
- Threatening reprisals due to an employee's refusal to respond to requests for sexual favors or for reporting a violation of this policy
- Unwelcome sexual advances, requests for sexual favors and other verbal or physical conduct of a sexual nature, regardless of gender, when:
  - Submission to such conduct is made either explicitly or implicitly a term or condition of an individual's employment;
  - Submission to, or rejection of, such conduct by an individual is used as a basis for employment decisions affecting such individual;
  - Such conduct has the purpose or effect of substantially interfering with the individual's work performance or creating an intimidating, hostile or offensive working environment.
  - What is abusive conduct/workplace bullying?
- Conduct of an employee in the workplace that a reasonable person would find hostile, threatening, intimidating, humiliating and unrelated to an employer's legitimate business interests.
  - Use of derogatory remarks, insults and/or epithets.
  - Verbal or physical conduct that sabotages or undermines a person's work performance that is threatening, humiliating or intimidating.
- Bullying, gossip, profanity, abusive conduct and negative comments are destructive to our School culture, create false rumors, disrupt school operations and interfere with the privacy of others.

#### What is Retaliation?

Retaliation against an individual for reporting harassment, discrimination, abusive conduct or for participating in an investigation of a claim of such is a serious violation of this policy and, like harassment or discrimination itself, will be subject to disciplinary action. Acts of retaliation should be reported immediately to Human Resources and will be promptly investigated and addressed.

As used in this policy, "retaliation" means taking any adverse employment action against an employee because the employee engaged in protected activity pursuant to this policy. Protected activity may include, but is not necessarily limited to, opposing a practice or conduct the employee reasonably believes to be unlawful, reporting or assisting in reporting suspected violations of this policy, cooperating or participating in investigations or proceedings arising out of a violation of this policy, or engaging in any other activity protected by applicable law.

As used in this policy, an "adverse employment action" means conduct or an action that materially affects the terms and conditions of the employee's employment status or is reasonably likely to deter the employee from engaging in further protected activity. An adverse employment action may include, but is not limited to, the following: demotion, suspension, reduction in pay, denial of merit salary increase, failure to hire, refusing to promote, denying employment opportunities, changing work assignments or otherwise treating an employee differently.

Any retaliatory adverse action because of a protected activity will not be tolerated. If an employee believes he/she has been subjected to, has witnessed, or has knowledge of retaliation in violation of this policy, please follow the complaint procedure outlined below.

#### Responsibility

All School employees have a responsibility for keeping our work environment free of harassment, discrimination, retaliation and abusive conduct in accordance with this policy.

#### Reporting

Your School encourages reporting of all perceived incidents of discrimination, harassment, abusive conduct or retaliation, regardless of the offender's identity or position. Individuals who believe that they have been subjected to such conduct should immediately discuss their concerns with their immediate supervisor, Executive Director or Human Resources. Do not report your complaint to any individual who has allegedly engaged in the inappropriate behavior that is the subject of your complaint. In addition, your School encourages individuals who believe they are being subjected to such conduct to promptly advise the offender that his or her behavior is unwelcome and request that it be discontinued. Often this action alone will resolve the problem. Your School recognizes, however, that an individual may prefer to pursue the matter through formal complaint procedures. Every effort will be made to keep such reports as confidential as possible, although confidentiality cannot be guaranteed. Your School is serious about enforcing its policy against harassment; however, your School cannot resolve a harassment problem that it does not know about. Therefore, employees are responsible for bringing any such problems to your School's attention so it can take whatever steps are necessary to correct the problems.

Supervisors must report any and all conduct of which they are made aware, which violates, or may violate, policies regarding discrimination, unlawful harassment, or retaliation to Human Resources, the Executive Director or the Chair of the Board of Directors, if appropriate. Supervisors who fail to report alleged violations may be subject to disciplinary action, up to and including termination.

Title IX provides for separate processes and procedures for sexual harassment and sexual assault when the type of conduct falls within the definitions of sexual harassment and sexual assault as provided in 34 C.F.R. § 106.30. In addition, the conduct must have taken place at school locations, events or circumstances over which the School exercised substantial control over both the individual who has been accused of sexual harassment and/or assault and the context in which the sexual harassment occurs. For these types of complaints, the School will follow the Title IX policy processes and procedures, which may be found in the School's Title IX grievance policy. If the conduct does not fall within Title IX, this policy will be followed. There may be instances where the conduct falls within both policies and the School will follow both policies.



The School's Title IX Coordinators are:

For Lake View Charter School and Winship Community Schools: Julie Haycock Email- julie.haycock@lakeviewcharter.org Phone Number- (916) 382-8873

For Clarksville and Feather River Charter Schools: Jenell Sherman Email- jenell.sherman@featherrivercharter.org Phone Number- (916) 532-5923

If you have a complaint about Title IX, contact the Title IX Coordinator listed above. You have 180 days of the date of the alleged discrimination, unless the time for filing is extended for good cause by the Title IX Coordinator. Although you are not required to utilize the School's internal grievance procedure, you may do so prior to filing a complaint with the Office of Civil Rights (OCR). If you use the School's internal grievance process, your Title IX complaint must be filed with the Office of Civil Rights within 60 days after the last act of the School's grievance process. If using the School's grievance process, the School will investigate student Title IX claims of discrimination using the processes adopted through the Uniform Complaint Procedure. A copy of the School's Uniform Complaint Procedures is available on the School's website.

Questions, concerns or complaints regarding compliance with Title IX employee issues, please contact the Human Resources Director Becky Harris, 4818 Golden Foothills Parkway #9, El Dorado Hills, CA 95762, (916) 241-8657. Questions, concerns or complaints regarding harassment, discrimination, intimidation and bullying, please contact the Equity Compliance Officer, Darcy Belleza, 4818 Golden Foothills Parkway #9, El Dorado Hills, CA 95762, (916) 241-8657.

#### Universal Complaint Procedure

All complaints of harassment, discrimination, retaliation or abusive conduct will be promptly investigated. Your School encourages the prompt reporting of complaints or concerns so that rapid and appropriate remedial action can be taken before relationships become irreparably strained. Therefore, while no fixed reporting period has been established, early reporting and intervention have proven to be the most effective method of resolving actual or perceived incidents of harassment.

Your School's investigation methods will vary depending on the nature of the complaint, the allegations, the witnesses, and other factors. The investigation may include individual interviews with the parties involved and, where necessary, with individuals who may have observed the alleged conduct or may have other relevant knowledge. All complaints will be handled as confidentially as possible and information will be disclosed only as it is necessary to complete the investigation and resolve the matter. All employees are required to fully cooperate with your School's investigation, which includes, but is not limited to, providing all pertinent information in a truthful manner, submitting pertinent documents in their possession, not interfering with the investigation in any manner, and maintaining an appropriate level of discretion regarding the investigation. Failure to do so may result in disciplinary action, up to and including termination.

During the investigation, your School will provide regular progress updates, as appropriate, to those directly involved. Your School will strive to complete its investigation as efficiently as possible in light of the allegations and will reach any conclusions based on the evidence collected and credibility of the witnesses. Your School may investigate conduct in the absence of a formal complaint if your School has reason to believe that an individual has engaged in conduct that violates School policies or applicable law. Further, your School may continue its investigation even if the original complainant withdraws his or her complaint during the course of the investigation. Any conduct which your School believes constitutes harassment, discrimination, abusive conduct, or retaliation in violation of this policy will be dealt with appropriately. Corrective action may include, for example, training, referral to counseling and/or disciplinary action such as warning, reprimand, withholding of a promotion or pay increase, reassignment, temporary suspension without pay or termination, as your School believes appropriate under the circumstances. Due to privacy protections, your School may not be able to fully disclose its entire decision regarding corrective action to the complainant. False and malicious complaints of harassment, discrimination, abusive conduct, or retaliation as opposed to complaints, which, even if erroneous, are made in good faith, may be the subject of appropriate disciplinary action. You may view the Universal Complaint Procedure on your school's website.

#### Conclusion

This policy was developed to ensure that all employees could work in an environment free from harassment, discrimination, abusive conduct and retaliation. Your School will make every reasonable effort to ensure that all concerned are familiar with these policies and aware that any complaint in violation of such policies will be investigated and resolved appropriately. Any employee who has questions or concerns about these policies should talk with Human Resources or the Executive Director. Finally, these policies should not, and may not, be used as a basis for excluding or separating individuals of a particular gender, or any other protected characteristic, from participating in business or work-related social activities or discussions. In other words, no one should make the mistake of engaging in discrimination or exclusion in order to avoid allegations of harassment. The law and the policies of your School prohibit disparate treatment on the basis of sex or any other protected characteristic, with regard to terms, conditions, privileges and prerequisites of employment. The prohibitions against harassment, discrimination, abusive conduct, and retaliation are intended to complement and further those policies, not to form the basis of an exception to them.

If you believe you have experienced discrimination, harassment, or abusive conduct you may file a Department of Fair Employment and Housing ("DFEH") or Equal Employment Opportunity Commission complaint. For information contact the DFEH or EEOC. You may find their phone numbers in the phone directory.

#### Training Requirements

Your School requires all employees to abide by California's training requirements, which includes training within six months of hire and retraining as legally required, thereafter. Employees who fail to complete this required training will be subject to disciplinary action, up to and including termination.

#### AT WILL EMPLOYMENT

We believe that an employment relationship is successful as long as both parties are mutually satisfied. Accordingly, both you and your School will have the right to terminate your employment and all related compensation and benefits at any time, with or without cause and with or without notice. In addition, your School may eliminate or change any term or condition of your employment (including but not limited to your job assignment, duties, or salary) at will, at any time, for any reason not prohibited by law, with or without cause and with or without previous notice.

This is called "employment at will," and no one other than the Executive Director of your School with the approval of the Board of Directors, has the authority to alter your employment at-will status, to enter into an agreement for employment for a specified period of time, or to make any agreement contrary to this policy. Further, any such agreement must be in writing and must be signed by the Executive Director. Statements of specific grounds for termination set forth in this Handbook, or elsewhere, are not all-inclusive and are not intended to restrict your School's right to terminate at-will.

#### TRANSCRIPTS FOR SALARY ADJUSTMENT

All transcripts must be turned in to Human Resources before September 1 to be considered for the current school year. If you choose to enroll in courses for Professional Development, please complete the *Professional Development Survey* in the HST Handbook no later than September 1, for consideration for the upcoming school year. This is an approval of courses to confirm that courses to be enrolled in are educationally relevant and sound. Failure to complete the *Professional Development Survey* before the deadline may result in no credit received for courses taken.

#### OPEN COMMUNICATION POLICY

We want to hear from you. Your School strongly encourages employee participation in decisions affecting their employment and their daily professional responsibilities. Our greatest strength lies in our employees and our ability to work together. We encourage open communication about all aspects of our school and organization. Employees are encouraged to openly discuss with their supervisors any problems or suggestions they believe would make our organization better and stronger. Your School is interested in all our employee's success and fulfillment. We welcome all constructive suggestions and ideas.

Employees who have work-related concerns or complaints are encouraged to discuss them with their supervisor or the Executive Director. Employees are encouraged to raise their work-related concerns as soon as possible after the events that cause concern. Your School will attempt to keep the employee's concerns and complaints and any resulting investigation confidential to the extent feasible. However, in the course of an investigation and/or in resolving the matter, some dissemination of information to others may be necessary, appropriate, and/or required by law. Employees with concerns or complaints relating to harassment, discrimination or retaliation should follow the reporting procedure outlined in this Handbook.

#### LACTATION ACCOMMODATION POLICY

Your School provides a reasonable amount of break time to accommodate a female employee's need to express breast milk for the employee's infant child. For those employees that are working at a school site, the School will also make a reasonable effort to provide the employee with the use of a room or other private location in close proximity to the employee's work area for the employee to express milk in private. The location will also meet the following requirements: not be a bathroom; be free from intrusion; be shielded from view; be safe, clean, and free of hazardous materials; contain a surface to place a breast pump and personal items; contain a place to sit; and have access to electricity or alternative devices, including, but not limited to, extension cords or charging stations, needed to operate an electric or battery-powered breast pump. In addition, the School shall provide access to a sink with running water and a refrigerator suitable for storing milk in close proximity to the employee's work area. If a refrigerator cannot be provided, the School may provide another cooling device suitable for storing milk, such as a School-provided cooler.

The School reserves the right to deny an employee's request for a lactation break if the additional break time will seriously disrupt operations.

Employees requesting an accommodation under this policy should comply with the following requirements:

- The employee should complete an accommodation request form and contact the employee's supervisor or Human Resources to request designation of a location and time to express breast milk under this policy. The School will respond accordingly, generally within two business days.
- The requested break time should, if possible, be taken concurrently with other scheduled break periods. Nonexempt employees should clock out for any lactation breaks that do not run concurrently with normally scheduled rest periods. Any such breaks will be unpaid.

Retaliation for making a lactation accommodation request is strictly forbidden. If the employee believes she has been retaliated against it should be reported immediately to her supervisor, Human Resources or Executive Director. Discrimination against and harassment of lactating employees in any form is unacceptable, a form of prohibited sex/gender discrimination, will not be tolerated at your School and will be handled in accordance with your School's policy on discrimination and harassment. If any employee believes that he or she has experienced retaliation or discrimination as a result of conduct protected by this policy, the employee may file a complaint with his or her supervisor and/or the Labor Commissioner's

Office. For more information, contact the Labor Commissioner's Office by phone at 213-897-6595 or visit a local office by finding the nearest one on our website: [www.dir.ca.gov/dlse/DistrictOffices.htm](http://www.dir.ca.gov/dlse/DistrictOffices.htm). The Labor Commissioner's Office provides an interpreter at no cost to the employee, if needed.

#### **PUBLIC RELATIONS**

The success of a school depends upon the quality of the relationship among the school, its employees, students, parents and the general public. The public impression of your School and its interest in our school will be formed in part, by School employees. Our employees are ambassadors. The more goodwill an employee promotes, the more employees, students, parents and the general public will respect and appreciate the employee, our School and our School's services.

Below are several things employees can do to help leave people with a good impression of our School. These are the building blocks for our continued success:

- Communicate with parents regularly
- Act competently and deal with others in a courteous and respectful manner.
- Communicate pleasantly and respectfully with other employees, families and students at all times.
- Follow up on requests and questions promptly, provide professional and personable replies to inquiries and requests, and perform all duties in an orderly manner.
- Respond to email and voicemail within 24 hours during the workweek.
- Take great pride in your work and enjoy doing your very best.

#### **WHISTLEBLOWER POLICY**

Your School is committed to maintaining a workplace where employees are free to raise good faith concerns regarding certain business practices, specifically: (1) reporting suspected violations of law, including but not limited to federal laws and regulations; (2) providing truthful information in connection with an inquiry or investigation by a court, agency, law enforcement, or other governmental body; and (3) identifying potential violations of School policy, specifically the policies contained in your School's Employee Handbook. An employee who wishes to report a suspected violation of law or School Policy may do so by contacting the Executive Director, Director or Human Resources.

Your School expressly prohibits any form of retaliation, including harassment, intimidation, adverse employment actions, or any other form of retaliation, against employees who raise suspected violations of law, cooperate in inquiries or investigations, or identify potential violations of School policy. Any employee who engages in retaliation will be subject to discipline, up to and including termination.

Any employee who believes that he or she has been subjected to any form of retaliation as a result of reporting a suspected violation of law or policy should immediately report the retaliation to one of the following: the Executive Director, Director or Human Resources. Any supervisor, manager, or human resources staff member that receives complaints of retaliation must immediately inform the Executive Director or Chair of the Board of Directors, if appropriate.

Reports of suspected violations of law or policy and reports of retaliation will be investigated promptly and in a manner intended to protect confidentiality as much as possible (although confidentiality cannot be guaranteed) and consistent with a full and fair investigation. Human Resources and a member of School administration will conduct the investigation or designate other internal or external parties to conduct the investigations. The investigating parties will notify the concerned individuals of their findings as appropriate.

## SECTION 4 – THE EMPLOYMENT PROCESS

### EMPLOYEE STATUS AND CLASSIFICATIONS

Each School employee is either a “full-time,” “part-time,” or “temporary” employee and either an “exempt” or “non-exempt” employee. Some of the policies and benefits described in this handbook depend on whether the employee is full-time or part-time. Full-time employees are those employees regularly scheduled to work 30 or more hours or more each week. Part-time employees are those regularly scheduled to work less than 30 hours each week. Temporary employees are those employed for short-term assignments or in connection with a specific project or event. Temporary employees are not eligible for employee benefits, except those mandated by applicable law.

Every member of the team is designated as a “Certificated employee” or “Classified employee.” Some of the policies and benefits described in this handbook depend on how the employee is designated.

#### Exempt

This category includes all regular employees who are determined by the School to be exempt from certain wage and hour provisions of state and federal laws. Exempt employees are paid a fixed salary that is intended to cover all of the compensation to which they are entitled. Exempt employees will be expected to work the number of hours necessary to complete their assigned responsibilities. Because they are exempt, such employees are not entitled to additional compensation for extra hours of work. Typically, full-time Teachers and Administrators are exempt employees.

#### Non-Exempt

This category includes all regular employees who are covered by certain wage and hour provisions of state and federal laws. Non-exempt employees are entitled to overtime and double-time pay as well as meal and rest breaks, as prescribed by law. Typically, all part-time and temporary employees are non-exempt. Additionally, most Classified staff are typically non-exempt employees.

#### Certificated Employee

Certificated Employees are teachers and administrators.

- Homeschool teachers (HST) are Schedule A
- Specialized Teachers including High School Teachers and Virtual Academy Teachers, Education Specialists, Speech Pathologists, Nurses, and Occupational Therapists are Schedule B
- Leadership is Schedule C
- Administration is Schedule D
- See below for Schedule E
- Part-time HST’s are Schedule F

#### Classified Employee

Classified Employees include those employees hired by the School that do not primarily instruct students, nor require state certification, such maintenance, assistants and other operational employees.

- Classified Employees are Schedule E on the salary schedule

### WORK SCHEDULES

All employees will be assigned a work schedule suitable for their job assignment and will be expected to begin and end work according to the schedule. Please note that schedules may vary depending on a variety of factors including whether you work during the academic year or on an annual basis. The Executive Director or your supervisor will assign your individual work schedule. In order to accommodate the needs of our business, it may be necessary to change individual work schedules on either a short-term or long-term basis. All employees are expected to be at their desks or workstations at the start of their scheduled shift, ready to work. If you need to modify your schedule, request the change with Human Resources or your supervisor. All schedule changes or modifications must be approved by the Executive Director or your supervisor.

Your School reserves the right to assign employees to jobs other than their usual assignment when necessary, provided the employee is capable of performing the essential functions of the alternate assignment.

Non-exempt employees are not to work before or to continue working after their scheduled hours unless specifically assigned by the supervisor. Non-exempt employees are not allowed to work “off the clock.” Attendance at School-sponsored functions is not compensated unless the supervisor has required you to attend. Employees violating these rules may be subject to disciplinary action up to and including termination.

### WORKWEEK AND WORKDAY

Staff are expected to complete their School employment duties from 8:30 a.m. – 5:00 p.m. Monday- Friday excluding holidays.

### VIRTUAL TEACHING EMPLOYMENT CONDITIONS

#### Position Responsibilities:

- Teachers selected for special assignment including, but not limited to High School Virtual Academy, Junior High Virtual Academy, Intervention or other created programs deemed “Virtual” within the job description will be assigned a “Virtual Class” or “Virtual Classes”
- Teachers are provided, at the School’s expense, a computer capable of maintaining a high speed internet connection for conducting virtual classes and other duties. Other equipment provided when necessary for class upon request.
- Teachers must be available each school day from 8:30 a.m. – 5:00 p.m. Monday - Friday by internet and/or phone.
- Teachers assigned to virtual classes will be required to conduct a virtual classroom session.
- Teachers must have access to a phone for calling/responding to students/parents during the teacher’s scheduled time within twenty-four (24) hours..
- Teachers will use the tracking and monitoring system integrated into the student’s assigned course. Teachers will provide continual monitoring of the student’s progress and their scheduled benchmarked progress status.
- Teachers will be responsible for all virtual school required record keeping and reporting.

#### Training:

- Teachers are required to attend training sessions hosted virtually or in-person. Mileage reimbursement will follow standard School protocols and procedures.

#### Worksites:

- Most classes will be held virtually. Teachers may work from home.

### SPECIAL EDUCATION TEACHING EMPLOYMENT CONDITIONS

#### Special Education Teachers/ Case Managers

- Special Education Teachers/ Case Managers teach specialized academic instruction (SAI) and transition services as well as credit bearing courses virtually.
- Teachers are provided, at the School’s expense, a computer capable of maintaining a high speed internet connection for conducting virtual class and other duties.
- Teachers must be available each school day from 8:30 a.m. – 5:00 p.m. Monday - Friday by internet and/or phone.
- Special Education Teachers are required to teach in virtual classrooms/ sessions.
- Teachers must have access to a phone for calling/responding to students/parents during the teacher’s scheduled time within twenty-four (24) hours.
- Teachers will use the tracking and monitoring system in google classroom and curricular programs as well as SEIS. Teachers will provide continual monitoring of the student’s progress at the scheduled progress reporting times.
- Teachers are responsible for collecting data and student work samples for student IEP goals and special education taught courses.
- Teachers will be responsible for all special education required record keeping and reporting.

#### Training:

- Teachers are required to attend training sessions hosted virtually or in-person. Special Education Teachers are required to attend two in-person schoolwide meetings/trainings per year. Mileage reimbursement will follow standard School protocols and procedures.

#### State-wide Assessments:

- Special Education Teachers are required to proctor 5 days (maximum) of in-person state-wide assessments per year

#### Worksites:

- Special Education Teachers work remotely as all classes and sessions are taught virtually.

### ATTENDANCE AND PUNCTUALITY

Employees are expected to observe regular attendance and be punctual. Each of our employees is critical to our success. Therefore, regular attendance and punctuality is considered an essential function of all positions. If you are unable to report for work on any particular day, you must call your supervisor at least one hour before the time you are scheduled to begin working for that day. If you call in less than one hour before your scheduled time to begin work, you will be considered tardy for that day. Absent extenuating circumstances or a medical provider’s order excusing you from work for a period of time, you must call in on any day you are scheduled to work and will not report to work. The School understands that in some cases, advance notice is not possible. In these cases, notify your supervisor personally at the earliest possible moment. In some circumstances, you may be required to provide verification of the reason or documentation for your absence.

More than three instances of tardiness by a non-exempt employee or instructional employee during any twelve-month period are considered excessive. Any unexcused absence is considered excessive. If you fail to report for work without any notification to your supervisor and the absence continues for a period of three business days, the School will determine that you have abandoned your job and voluntarily terminated your employment.



**PROFESSIONAL DEVELOPMENT**

Employees are expected to attend and participate in all professional development sessions and other school sponsored trainings that may be scheduled. While we understand that scheduling conflicts may arise, consistent tardiness, absenteeism or early departures may result in disciplinary action. When an employee attends a school sponsored professional development and/or training, the time spent in attendance shall be counted as time worked. For virtual attendance, video registration/chat or signing in on a Google Doc/Survey will serve as attendance. For in-person meetings, either online document or paper documentation will be required for the purpose of record keeping. These records will serve as the official roster of attendance. Your School will pay hourly employees for attendance at mandatory trainings, lectures and meetings outside of regular working hours at the employee's hourly rate. As exempt employees, salaried staff may be required to attend training seminars that may be outside of your School's normal business hours with no additional pay. In the event that an employee must leave early or is unable to attend a scheduled training (i.e. Professional Development sessions), during their normal work hours, an employee MUST put in a time-off request according to the time-off policy. Employees may also be required to attend make-up sessions of any missed training. Failure to comply with this policy may result in disciplinary action.

**TIME RECORDS (NON-EXEMPT EMPLOYEES)**

Non-exempt employees must accurately complete time records within the School's time keeping system on a daily basis. Each time record must show the exact time work began and ended, the meal periods taken, and employee signature. Absences and overtime must be accurately identified on your time record. Non-exempt employees are not allowed to work "off the clock." All time actually worked must be recorded. You cannot record time and/or submit a time record for another employee. Each employee must sign and submit his or her own time record. Employees must record all time actually worked.

Exempt employees must report full days of absence from work. Deductions from an exempt employee's salary will be made only in accordance with applicable law. Employees should immediately contact Human Resources with any questions concerning their pay so that inadvertent errors can be corrected.

**OVERTIME**

All non-exempt employees are required to obtain approval from their supervisor prior to working overtime or double-time. Failure to obtain such approval may subject an employee to discipline, up to and including termination. However, in all cases, the School will compensate its non-exempt employees for all hours worked.

**OFF THE CLOCK WORK**

Your School prohibits all non-exempt employees from working off the clock at any time. All time worked must be recorded on the employee's timesheet. This includes the use of laptops, computers, PDAs or cell-phones to check work email, voicemail or to send text messages after hours.

**MEAL AND REST PERIODS (NON-EXEMPT EMPLOYEES)**

All non-exempt employees are provided with an opportunity to take meal and rest periods consistent with the law. During your meal periods and rest periods, you may not work at all. You are excused from all duties. In addition, please understand that you may not combine required meal or rest periods in order to take a longer break. Also, you may not miss a required meal or rest period in order to start work later or leave work earlier. In the rare event that you believe you cannot take a meal or rest period, or you are unable to take a full meal or rest period pursuant to School policy or you must begin your meal period more than five hours after your work period began, you must notify Human Resources in advance whenever possible (and, in any event, as soon as possible) so that the proper measures may be taken. Failure to comply with the School's policy regarding meal and/or rest periods can lead to discipline, up to and including termination.

**Meal Periods**

Non-exempt employees (hourly employees) scheduled to work more than five hours in a day are given a 30-minute duty-free unpaid meal period. The meal period must be taken before the fifth (5th) hour of work. For example, if the employee begins working at 7:00 a.m., then the employee must clock out to begin his or her meal period no later than 12:00 p.m. (noon). The employee may waive this meal period if his/her workday will be completed within a total of six hours or less. To waive a meal period, the employee must receive prior written approval from their supervisor and complete a "Meal Period Waiver" form.

If an employee's day exceeds ten hours of work time, the employee is entitled to an additional 30-minute duty-free meal break. The employee only may waive this second meal period if he/she has taken the required first meal break of at least 30 minutes and his/her workday will not exceed 12 hours. To waive the second meal period, the employee must receive prior written approval from their supervisor and complete a "Second Meal Period Waiver" form.

Non-exempt employees must observe assigned working hours, the time allowed for meal periods, and report any missed, late or short meal periods on that day's time record and to the employee's supervisor immediately. The meal period must be accurately recorded on the employee's timesheet. Meal periods are unpaid time and employees are free to leave the premises. Meal periods may not be combined with rest periods or used to come in later or leave earlier on a workday.

**Rest Periods**

Non-exempt employees are authorized and permitted to take a 10-minute rest period for each four

(4) hours of work or major portion thereof. Your supervisor may schedule your rest periods. Rest periods should be taken as close to the middle of a work period as possible and cannot be taken in conjunction with a meal period. Rest periods are paid work time; they cannot be waived by the employee in order to shorten the workday or used towards additional time off.

**Hours Worked****Number of Rest Periods**

3.5 hours to 6 hours

1, 10-minute rest period Over 6 hours to 10 hours

2, 10-minute rest periods Over 10 hours to 14 hours

3, 10-minute rest periods

Non-exempt employees must observe assigned working hours, the time allowed for rest periods, and report any missed rest period immediately as set forth below. Employees are encouraged to report any concerns regarding meal or rest periods to Human Resources.

**Reporting Missed, Late or Short/Interrupted Meal and Rest Periods**

Any employee who misses a meal or rest period or who experiences a late, short, or interrupted meal period – for any reason – must immediately report this issue in writing (via email) to Human Resources on the same workday that he or she experienced the non-compliant meal or rest period. The employee must include a description providing a thorough explanation for the non-compliant meal or rest period.

If an employee voluntarily chooses to miss a meal or rest period or take a late, short, or interrupted meal period (e.g., I chose to take my lunch later in the day or I chose to refuse an "authorized" meal period at the time provided by your school), the employee is not entitled to premium pay (one additional hour of pay). If an employee involuntarily experiences a missed meal or rest period or a late, short, or interrupted meal period (e.g., my supervisor asked me to handle a client call or meeting that caused me to miss or take a late meal period), the employee is entitled to premium pay. Employees must report the reason for the non-compliant meal or rest period to Human Resources.

**PAYDAYS**

Employees are paid semi-monthly in accordance with the School's payroll schedule. The Payroll Coordinator or his or her designee will distribute checks to those who do not have direct deposit. If a normally scheduled pay day falls on a weekend or holiday, paychecks will be distributed the preceding business day.

A written, signed authorization is required for mail delivery or for delivery of your paycheck to any other person. If you have an automatic deposit for your paycheck, your funds will be deposited to the financial institution you requested by the end of business on the scheduled payday. While an automatic deposit may actually credit to your account before your actual "payday," the School is not responsible for automatic payments or withdrawals dated prior to your actual payday and you should not depend on early deposits of your pay. If a wage garnishment order is received by your School for one of our employees, we are obligated by law to comply with the demand. The affected employee will receive notice from his or her supervisor or Human Resources as soon as possible.

**PAYROLL WITHHOLDINGS**

The School is required by law to withhold Federal Income Tax, State Income Tax, Social Security (FICA), State Teachers Retirement Service (STRS for eligible credentialed faculty) and State Disability Insurance from each employee's paycheck as outlined below. Additionally, if a garnishment, tax levy, or an order to withhold child support payments should be delivered, your School must comply with that order within the time allowed by law, and cannot postpone the payroll deduction for any reason. Voluntary deductions, which must be authorized in writing by employees, may include retirement plans, employee portion of insurance premiums, or any other benefit made available to employees.

If an employee believes an error has been made in his or her pay or deductions your School will work in good faith to resolve errors as soon as possible. The employee should notify the Payroll Coordinator or his or her designee of any errors in pay or deductions withheld within seven (7) days from the date paid.

Every deduction from the employee's paycheck is explained on the check voucher/paystub. If the employee does not understand the deduction, then he or she should ask Human Resources to explain it. The employee may change the number of withholding allowances he or she wishes to claim for Federal and/or State Income Tax purposes before any pay period by filling out a new W4 form and submitting it to Human Resources.

## SECTION 5- CONDITIONS OF EMPLOYMENT

### IMMIGRATION LAW COMPLIANCE

The School employs only those authorized to work in the United States in compliance with the Immigration and Control Act of 1986. Each new employee, as a condition of employment, must complete the Employment Eligibility Verification Form I-9 and present original documentation establishing identity and employment eligibility as outlined on the I-9 instruction forms. Former employees who are rehired must also complete the form if they have not completed an I-9 with your School within the past three years or if their previous I-9 is no longer retained or valid.

### CREDENTIAL REQUIREMENTS

If you are a credentialed team member, you must provide copies of your credential, official transcripts, and/or test scores prior to your first day of actual work. Failure to provide these documents may delay your ability to begin work. You are also responsible for keeping required certificates, credentials, and registrations current and in good standing, for paying the costs associated with renewal, and for providing both your Executive Director and the School with verification of renewals. Failure to provide these updated documents to the School may result in suspension without pay until such time as the necessary documentation has been provided. If a teacher fails to obtain the appropriate credential, or allows a credential, certificate, registration, or required course deadline to expire, or fails recertification, training, or testing, the School reserves the right to suspend the teacher without pay until the teacher's credential is cleared, or release the teacher from at-will employment as necessary.

### TEACHER INDUCTION

Your school does not offer Teacher Induction. Please refer to the California Commission on Teacher Credentialing.

### RESIDENCY REQUIREMENTS

All employees with in-person requirements as part of their job description are required to live and reside in California, in the region where students are served. Employees are not permitted to work for the School while out of the state of California, unless on a pre-approved basis.

### TEMPORARY RESIDENCY

Temporary Residency for Certificated Employee: All certificated employees (with in-person requirements as part of their job description) who are seeking to relocate with a temporary residence are required to: Write a "Temporary Residency Request" to their supervisor and Executive Director a minimum of 5 days prior to departing primary residence.

Certificated employees must obtain written approval from their supervisor and Executive Director for the Temporary Residency to be granted. Failure to do so, will result in a dock in pay for days absent. Temporary Residency may be approved for a maximum of two weeks and the certificated employee is expected to continue and perform all job duties per their job description, communicate and execute all job duties with students, colleagues, and all work-related entities. Certificated employees are expected to continue to be available between the scheduled hours of 8:30am-5pm. Though a temporary residency may not be the norm, employees are encouraged to review the other leave policies outlined in the Employee Handbook that may be deemed more appropriate for the circumstance. Temporary Residency is not to be construed as a vacation, as only Administration (Schedule D) has PTO in their contract. All Certificated staff, please refer to the Leave policies or Human Resources for more clarification.

### TUBERCULOSIS TEST

Before the first day of employment, all new employees must have had a tuberculosis test as described in Education Code 49406 or a TB Risk Assessment (pursuant to AB1667) within the past 60 days. Employees transferring from other public or private schools within the State of California must either provide proof of an examination or a completed Risk Assessment within the previous 60 days or a certification showing that he or she was examined within the past four (4) years and was found to be free of communicable tuberculosis. The current physician's statement or Risk Assessment must be on file in the office before the first day of employment. Failure to provide documentation on time may result in delay of your ability to begin work or termination.

TB Clearance is good for four years and it is the employee's responsibility to remain in compliance and ensure the School has a valid certificate on file.

### CRIMINAL BACKGROUND CHECK

As required by law, all individuals working or volunteering at the School will be required to submit to fingerprinting and a criminal background investigation.

The School shall, on a case-by-case basis, determine whether a volunteer will have more than limited contact with pupils or consider other factors requiring a criminal background check for such a volunteer.

### CHILD ABUSE AND NEGLECT REPORTING ACT

Since our employees work directly with children, they are in a position to detect instances of child abuse and neglect. It is your School's policy that all employees shall comply with the California State law regarding child abuse reporting procedures. Section 11166 of the California Penal Code mandates the reporting to designated authorities of cases of suspected child abuse as follows:

"Any child care custodian, health practitioner, or employee of a child protective agency who has knowledge of or observes a child in his or her professional capacity or within the scope of his or her employment whom he or she knows or reasonably suspects has been the victim of child abuse shall report the known or suspected instance of child abuse to a child protective agency immediately or as soon as practically possible by telephone and shall prepare and send a written report thereof within 36 hours of receiving the information concerning the incident."

While each employee has the responsibility to ensure the reporting of any child he/she suspects is a victim of abuse, the employee is not to verify the suspicion or prove that abuse has occurred. Teachers or staff who become aware of suspected child abuse should report the suspicions as required. All employees will be mandated child abuse reporters and will participate in annual training, follow all applicable reporting laws and the same policies. Your School's Child Abuse and Neglect Policy will contain detailed policies and procedure for the immediate reporting of suspected child abuse and neglect. All appropriate staff are required to certify knowledge of the policy annually, and employees shall receive mandated reporter training annually. Your school will provide this training, as well as other trainings, mandated by law during the week before school begins.

It is extremely important that School employees comply with the requirements of the Child Abuse and Neglect Reporting Act (CANRA). No mandated reporter can be held civilly or criminally liable for any report required or authorized by CANRA. In addition, any other person who voluntarily reports a known or suspected incident of child abuse or neglect will not incur civil or criminal liability unless it is proven that the report was false and the person knew the report was false or made the report with reckless disregard of its truth or falsity. Your direct supervisor is available to answer any questions employees may have about their responsibilities under CANRA, or to assist an employee in making a report under CANRA. If an employee makes a report pursuant to CANRA without the School's assistance, he or she is required to notify the School of the report if it is based on incidents he or she observed or became aware of during the course and scope of his or her employment with the School.

### PERSONNEL FILES

An employee or former employee (or designee) has the right to inspect or receive a copy of his or her personnel records at reasonable times, at a reasonable place, and on reasonable advance notice to Human Resources. All requests should be put in writing preferably on the form maintained by the School. If the request includes a request for copies the employee or former employee may be required to pay for the actual costs of copying. The Employer will respond to such a request within 30 days of receipt of the written request. Employees are not entitled to inspect or copy: letters of reference, records that relate to an investigation of possible criminal activity, ratings, reports, or records obtained prior to employment, prepared by examination committee members or obtained in connection with a promotional examination.

### CHANGES IN EMPLOYEE INFORMATION

An employee is responsible for notifying Human Resources about changes in the employee's personal information and changes affecting the employee's status (ex. name changes, address or telephone number changes, marriages or divorces, etc.) This notification by the employee must occur as close to the change as possible, but no later than 30 days following the change.

## SECTION 6 – PERFORMANCE

### PERFORMANCE EVALUATIONS

Performance evaluations generally are conducted annually to provide both employees and supervisors with the opportunity to discuss the employee's position, tasks, identify and correct weaknesses, encourage and recognize strengths, and discuss methods for improving performance. The performance evaluations are intended to make employees aware of their progress, areas for improvement, and objectives or goals for future work performance. Favorable performance evaluations do not guarantee an increase in salary or promotional opportunities, or even continued employment. Salary increases and promotions are solely within the discretion of your school and depend upon many factors in addition to performance.

#### Certificated Staff:

At the start of each academic year, each certificated staff member will meet with their Supervisor or Instructional Team Advisor to establish Performance Objectives or SMART Goals for that school year. The certificated staff member will put these objectives in writing and complete a pre-evaluation template to be provided by their Supervisor or Instructional Team Advisor. The Supervisor or Instructional Team Advisor will evaluate the certificated staff member's performance at least once a year formally and on an ongoing basis informally. The evaluation will be based on factors including the certificated staff member's job description, accomplishment of the Performance Objectives, and standards for teaching performance. In addition to these more formal performance evaluations, your School encourages you and your supervisor to discuss your job performance on an ongoing basis.

The School's provision of performance evaluations does not alter the at-will employment relationship. Nothing in this policy shall limit the right to terminate employment at-will or limit the School's right to transfer, demote, suspend, administer discipline, and change the terms and conditions of employment at its sole discretion. Employment is at the mutual consent of the employee and the School. Accordingly, either the employee or the School can terminate the employment relationship at-will, at any time, with or without reason and with or without notice.

#### Classified Staff:

Formal evaluations are generally held once each year. You will be provided a copy of the evaluation tool and as part of the process you will do a self-evaluation. Your supervisor may schedule your evaluation time in advance so that you are prepared for the process. In addition to these more formal performance evaluations, the School encourages you and your supervisor to discuss your job performance on an ongoing basis.



## SECTION 7 – LEAVES

### FAMILY MEDICAL LEAVE ACT/CALIFORNIA FAMILY RIGHTS ACT<sup>1</sup>

The School complies with the federal Family and Medical Leave Act (FMLA) and the California Family Rights Act (CFRA), both of which require the School to permit each eligible employee to take up to 12 work weeks of leave in any 12-month period for the birth or adoption of a child, the employee's own serious health condition or for the serious health condition of the employee's child, parent, or spouse. CFRA further allows for 12 work weeks of leave to care for the serious health condition of the employee's grandchild, grandparent, domestic partner, or sibling.

Child means a biological, adopted, or foster child, a stepchild, a legal ward, a child of domestic partner, or a person to whom the employee stands in loco parentis. Parent means a biological, foster, or adoptive parent, a stepparent, a legal guardian, or other person who stood in loco parentis to the employee when the employee was a child. For ease of reference in this policy, all leave taken under FMLA and CFRA will be referred to as "FMLA Leave," except to the extent that leave under FMLA and CFRA do not overlap. It is also the policy of the School that it will not interfere with, restrain, or deny any employee's rights provided by FMLA and CFRA. FMLA leave runs concurrently with Pregnancy Disability Leave, while CFRA leave does not.

Eligible employees may request a family and medical leave of absence under the circumstances described below. Eligible employees are those who have been employed by the School for at least 12 months (not necessarily consecutive), have worked at least 1250 hours during the 12 months immediately prior to the family and medical leave of absence, and, for purposes of FMLA leave only, are employed at a worksite where there are 50 or more employees of the School within 75 miles.

Ordinarily, you must request a planned family and medical leave at least 30 days before the leave begins. If the need for the leave is not foreseeable, you must request the leave as soon as possible. You should use the School's request form, which is available upon request from Human Resources. Failure to comply with this requirement may result in a delay of the start of the leave.

A family and medical leave may be taken for the following reasons:

1. The birth of an employee's child or the placement of a child with the employee for foster care or adoption, so long as the leave is completed within 12 months of the birth or placement of the child;
2. The care of the employee's spouse, child, parent, or registered domestic partner with a "serious health condition";
3. The care of a grandchild, grandparent, domestic partner, or sibling with a serious health condition. Leave taken pursuant to this section is available only through CFRA and not FMLA. As such, FMLA does not run concurrently with leave taken for the employee's grandchild, grandparent, domestic partner, or sibling with a serious health condition.
4. The "serious health condition" of the employee;
5. The care of the employee's spouse, child, parent, or next of kin who is a member of the Armed Forces, including a member of the National Guard or Reserves, and who is undergoing medical treatment, recuperation, or therapy, is otherwise in outpatient status, or is otherwise on the temporary disability retired list, for a serious injury or illness incurred in the line of duty on active duty or that existed before the beginning of the member's active duty and was aggravated by service in the line of duty; or
6. Any qualifying exigency as defined by the applicable regulations arising out of the fact that the employee's spouse, registered domestic partner, child, or parent is on active duty (or has been notified of an impending call or order to active duty) in the Armed Forces in support of a contingency operation. Domestic partner leave under this section is only available through CFRA and not FMLA.

A "serious health condition" is an illness, injury, impairment, or physical or mental condition that involves inpatient care in a hospital or other medical care or residential health care facility or continuing treatment or supervision by a health care provider. You may take a leave under paragraphs (2) or (3) above only if due to a serious health condition, your spouse, child, grandchild, grandparent, sibling, parent, or registered domestic partner requires your care or assistance as certified in writing by the family member's health care provider. If you are seeking a leave under paragraph (4) above, you must provide the School with a medical certification from your health care provider establishing eligibility for the leave, and you must provide the School with a release to return to work from the health care provider before returning to work. You must provide the required medical certification to the School in a timely manner to avoid a delay or denial of leave. You may obtain the appropriate forms from Human Resources.

Family and medical leave is unpaid and may be taken for up to 12 workweeks during the designated 12-month period (with the exception of qualifying leaves to care for a member of the Armed Services who has a serious illness or injury, which may be taken for up to a total of 26 workweeks of leave during a single 12-month period). The 12-month period will be defined as a "rolling twelve months" looking backward over the preceding 12 months to calculate how much family and medical leave time has been taken and therefore determine the amount of leave that is available. Qualifying leaves to care for a member of the Armed Services who has a serious illness or injury will be calculated on the 12-month period looking forward. All time off that qualifies as family and medical leave will be counted against your state and federal family and medical leave entitlements to the fullest extent permitted by law. You will be required to use any available sick time during unpaid family and medical leave. You will also be required to use any available paid sick leave during unpaid family and medical leave that is due to your own or a family member's serious health condition. However, if an employee is receiving benefit payments pursuant to a disability insurance plan (such as California's State Disability Insurance plan or Paid Family Leave program) or workers' compensation insurance plan, the employee and the School may mutually agree to supplement such benefit payments with available paid sick leave.

Benefit accrual, such as PSL, PTO, and holiday benefits, will be suspended during the approved leave period and will resume upon return to active employment. During a family and medical leave, group health benefits will be maintained as if you were continuously employed. However, you must continue to pay your share of applicable premiums (for yourself and any dependents) during the leave.

If the employee out on leave chooses not to return from a leave allowed by this policy after the expiry of the leave, the employee will be required to repay the School the premium amounts it paid during leave, unless the employee does not return to work because of circumstances beyond the employee's control or because of recurrence, continuation, or onset of a serious health condition.

If you do not return to work on the first workday following the expiration of an approved family and medical leave, you will be deemed to have resigned from your employment. Upon returning from such a leave, you will normally be reinstated to your original or an equivalent position and will receive pay and benefits equivalent to those you received prior to the leave, as required by law. In certain circumstances, "key" employees may not be eligible for reinstatement following a family and medical leave. The School will provide written notice to any "key" employee who is not eligible for reinstatement.

Before an employee will be permitted to return from leave taken because of their own serious health condition, the employee must obtain a certification from their health condition, the employee must obtain a certification from their health care provider that they are able to resume work.

If you have any questions concerning, or would like to submit a request for a family and medical leave of absence, please contact Human Resources.

### PREGNANCY DISABILITY LEAVE

The School provides pregnancy disability leaves of absence without pay to eligible employees who are temporarily unable to work due to a disability related to pregnancy, childbirth, or related medical conditions. Employees should make requests for pregnancy disability leave to their supervisor at least 30 days in advance of foreseeable events and as soon as possible for unforeseeable events. A health care provider's statement must be submitted, verifying the need for such leave and its beginning and expected ending dates. Any changes in this information should be promptly reported to Human Resources. Employees returning from pregnancy disability leave must submit a health care provider's verification of their fitness to return to work.

The School will make a good faith effort to provide reasonable accommodations and/or transfer requests when such a request is medically advisable based on the certification of a healthcare provider. When an employee's health care provider finds it is medically advisable for an employee to take intermittent leave or leave on a reduced work schedule and such leave is foreseeable based on planned medical treatment because of pregnancy, the School may require the employee to transfer temporarily to an available alternative position. This alternative position will have an equivalent rate of pay and benefits and must better accommodate recurring periods of leave than the employee's regular job.

Eligible employees are normally granted unpaid leave for the period of disability, up to a maximum of four months (or 17 1/3 weeks or 693 hours) per pregnancy. Employees will be required to use any unused allotted sick time during any unpaid portion of pregnancy disability leave. Employees may also elect to use any available PTO during any unpaid portion of pregnancy disability leave. If an employee is receiving benefit payments pursuant to a disability insurance plan (such as California's State Disability Insurance plan or Paid Family Leave program), the employee and the School may mutually agree to supplement such benefit payments with available sick leave.

Benefit accrual, such as PTO, sick leave, and holiday benefits, will be suspended during the approved pregnancy disability leave period and will resume upon return to active employment. Group health benefits will be maintained during the approved pregnancy disability leave as if you were continuously employed. However, you must continue to pay your share of applicable premiums (for yourself and any dependents) during the leave.

Additionally, if an employee does not return to work after the expiration of the pregnancy disability leave, and the reasons for failure to return to work do not include one of the following: 1) the employee is on CFRA leave; or 2) the continuation, recurrence or onset of a health condition entitling the employee to pregnancy disability leave in the first instance, or a non pregnancy-related medical condition requiring other leave or other circumstances beyond the control of the employee, the School reserves the right to recover from the employee the premium the School paid for the employee's group health plan while out on leave.

So that an employee's return to work can be properly scheduled, an employee on pregnancy disability leave is requested to provide the School with at least one week's advance notice of the date she intends to return to work.

When an approved pregnancy disability leave ends, the employee will be reinstated to the same position, unless the job ceases to exist because of legitimate business reasons. An employee has no greater right to reinstatement to the same position or to other benefits and conditions of employment than if she had been continuously employed in this position during the pregnancy disability leave or transfer. If the same position is not available, the employee will be offered a comparable position in terms of such issues as pay, location, job content, and promotional opportunities, if one exists. An employee has no greater right to reinstatement to a comparable position or to other benefits or conditions of employment than an employee who has been continuously employed in another position that is being eliminated.

If you have any questions regarding pregnancy disability leave, please contact Human Resources.

#### **ADDITIONAL LEAVES**

Some of the following leaves are designated with asterisks, which means that application and employee eligibility requirements of the leave (either in part or in whole) depends on whether the School employs the minimum number of employees indicated below. Policies without an asterisk apply regardless of the number of School employees.

- \*The School has 15 or more employees
- \*\*The School has 16 or more employees
- \*\*\*The School has 25 or more employees

Should you have any questions as to eligibility requirements of any leave policy, please contact Human Resources.

#### **MILITARY SPOUSE LEAVE\*\*\***

An eligible employee-spouse of a qualified service member is entitled to take ten (10) days unpaid leave during a period when the spouse is on leave from deployment during a period of military conflict. An eligible employee must work an average of 20 hours per week; must provide notice of his or her intention to take the leave within two (2) business days of receiving official notice that the service member will be on leave; and submit written documentation certifying that the service member will be on leave during the time the leave is required.

The employee may use available PSL or PTO for this leave.

#### **WORKERS' COMPENSATION LEAVE**

Employees that are temporarily disabled due to a work-related illness or injury will be placed on workers' compensation leave. The duration leave will depend upon the rate of recovery and the medical provider's recommendation. Workers' compensation leave will run concurrently with any other applicable medical leave of absence (i.e. FMLA/CFRA if applicable). Human Resources will reach out to employees that have requested a workers' compensation leave regarding employer provided health insurance benefits. If you have any questions concerning this leave and/or any benefit related questions, please contact Human Resources.

#### **BEREAVEMENT LEAVE**

The School provides regular full-time employees up to three (3) days of paid bereavement leave, beyond sick or personal time, due to the death of an immediate family member. This includes a parent (including an in-law and step-parent), spouse, domestic partner, dependent, sibling, stepsibling, grandparent or grandchild. If a funeral is more than 500 miles from your home, you may receive paid leave for five (5) days with prior approval from your supervisor.

#### **JURY DUTY LEAVE**

All employees who receive a notice of jury/witness duty must notify their supervisor as soon as possible so that arrangements may be made to cover the absence. In addition, employees must provide a copy of the official jury/witness duty notice to their supervisor. Employees must report for work whenever the court schedule permits. Either the School or the employee may request an excuse from jury/witness duty if, in the School's judgment, the employee's absence would create serious operational difficulties.

Non-exempt employees who are called for jury/witness duty will be provided time off without pay. Exempt employees will receive their regular salary unless they do not work any hours during the course of a workweek. Employees may elect to use any available PTO during jury/witness duty leave.

In the event that the employee must serve as a witness within the course and scope of his or her employment with the School, the School will provide time off with pay.

#### **TIME OFF TO VOTE**

The School will allow any non-exempt employee who is a registered voter and does not have enough time outside of working hours to vote in a statewide election up to two (2) hours of work time without loss of pay to vote. The request must be made at least two (2) working days in advance. The time must be at the beginning or end of the employee's regular shift, whichever allows the most free time for voting and the least time off from work unless the School and the employee agree otherwise. The employee may be required to prove he or she is a registered voter.

An employee may also serve as an election official on Election Day without being disciplined, however the School will not pay the employee for this time off. Available PTO may be used for this time off. Nothing in this policy requires the employee to bring his or her mail (absentee) ballot to work, including mailing such absentee ballots from work.

#### **SCHOOL ACTIVITIES LEAVE\*\*\***

The School encourages employees to participate in the school activities of their child(ren). If you are the parent or guardian of a child who is in school up to grade 12, or who attends a licensed daycare facility, you may take up to 40 hours of unpaid leave per year to participate in the activities of the school or daycare facility, to find, enroll or reenroll your child in a school or with a licensed childcare provider and/or to address a childcare provider or school emergency.

The leave is subject to all of the following conditions:

- The time off for school activity participation cannot exceed eight (8) hours in any calendar month, or a total of forty (40) hours each year;
- Unless it is an emergency, employees planning to take time off for school visitations must provide as much advance notice as possible to their supervisor;
- If the School employs both parents, the first employee to request such leave will receive the time off. The other parent will receive the time off only if the leave is approved by his or her supervisor;
- Employees must use existing PTO in order to receive compensation for this time off;
- Employees who do not have paid time off available will take the time off without pay.
- Documentation of participation may be requested and will be sufficient if it is provided in writing by the school or the licensed child care/day care facility.

#### **SCHOOL APPEARANCE/SUSPENSION LEAVE**

If the parent or guardian of a child facing suspension from school is summoned to the school to discuss the matter, the employee should alert his or her supervisor as soon as possible before leaving work. In compliance with California Labor Code section 230.7, no discriminatory action will be taken against an employee for taking time off for this purpose.

This leave is unpaid but the employee may choose to use available PTO. You will not be discharged or discriminated against because of an absence protected by this law.

#### **CRIME VICTIM LEAVE**

Employees are allowed to be absent from work for various reasons related to crime or abuse if:

- The employee is a victim of a crime;
- An immediate family member is a victim of a crime (immediate family member means: spouse, registered domestic partner, child, step-child, adoptive child, foster child, legal ward of the court, adopted child, a child of a domestic partner, a child to whom the employee stands in loco parentis, a person to whom the employee stood in loco parentis when the person was a minor, sibling, step-sibling, foster sibling, adoptive sibling, half-sibling, parent, step-parent, or the child or a registered domestic partner, or any other individual whose close association with the employer is the equivalent of any of these family relationships).
- "Victim of crime" means a victim of stalking, domestic violence, or sexual assault, victim of crime that caused physical injury or that caused mental injury and a direct threat of physical injury or a person whose immediate family member is deceased as the direct result of crime.
- Leave may be taken for any of the following reasons:
  - An employee may take leave to appear in court to comply with a subpoena or other court order as a witness in any judicial proceeding;
  - An employee victim may take time off to obtain or attempt to obtain any relief, which includes, but is not limited to, a temporary restraining order, restraining order, or other injunctive relief, to help ensure the health, safety, or welfare of the victim or their child
  - An employee victim to seek medical attention for injuries caused by crime or abuse
  - An employee victim to seek medical attention for injuries caused by crime or abuse
  - An employee victim to obtain services from a domestic violence shelter, program, rape crisis center, or victim services organization or agency as a result of crime or abuse
  - An employee victim to obtain psychological counseling or mental health services related to an experience of crime or abuse
  - An employee victim to participate in safety planning and to take other actions to increase safety from future crime or abuse, including temporary or permanent relocation.
  - An employee is entitled to attend judicial proceedings relating to crimes listed below relating to that crime or those crimes against an immediate family member victim, a registered domestic partner of a victim or the child of a registered domestic partner of a victim: 1) A violent felony as defined in Penal Code section 667.5(c); 2) A serious felony as defined in Penal Code section 1192.7(c); or 3) A felony provision of law proscribing theft or embezzlement.

An employee must give reasonable advance notice to the School by providing documentation of the proceeding, unless advanced notice is not feasible. Documentation may be from any of the following:

- Notice from the court or government agency setting the hearing;
- The district attorney or prosecuting attorney's office; or
- The victim/witness assistance office advocating on the victim's behalf.

When an unscheduled absence occurs, the School shall not take action against the employee if the employee, within a reasonable time after the absence, provides a certification to the employer.

Documentation may be from any of the following:

- A police report indicating that the employee was a victim

- A court order protecting or separating the employee from the perpetrator of the crime or abuse, or other evidence from the court or prosecuting attorney that the employee has appeared in court
- Documentation from a licensed medical professional, domestic violence counselor, a sexual assault counselor, victim advocate, licensed health care provider, or counselor that the employee was undergoing treatment or receiving services for physical or mental injuries or abuse resulting in victimization from the crime or abuse
- Any other form of documentation that reasonably verifies that the crime or abuse occurred, including but not limited to, a written statement signed by the employee, or an individual acting on the employee's behalf, certifying that the absence is for a purpose authorized by this Crime Victim Leave.

This leave is unpaid but the employee may choose to use available PSL or personal time off (PTO). You will not be discharged or discriminated against because of an absence protected by this law. The School will also, to the extent possible and allowed by law, maintain the confidentiality of an employee requesting leave under this provision.

#### **DOMESTIC VIOLENCE LEAVE/SEXUAL ASSAULT LEAVE\*\*\***

If you are the victim of domestic violence, sexual assault, or stalking, you may be entitled to a reasonable accommodation for your safety while at work. Reasonable accommodations may include the implementation of safety measures, including a transfer, reassignment, modified schedule, changed work telephone, changed work station, installed lock, assistance in documenting domestic violence, sexual assault, stalking, or other crime that occurs in the workplace, an implemented safety procedure, or another adjustment to a job structure, workplace facility, or work requirement in response to domestic violence, sexual assault, stalking, or other crime, or referral to a victim assistance organization. The School is not required to undertake an action that constitutes an undue hardship on its business operations. If you require a reasonable accommodation in line with this policy, please contact the School's human resources manager.

You will not be discharged, discriminated against, or retaliated against because of a request for an accommodation under this policy.

Employers are prohibited from discharging, discriminating, or retaliating against an employee who is a victim of domestic violence, the victim of sexual assault or stalking for taking time off to seek medical attention, obtain services from a domestic violence shelter or program or rape crisis center, obtain psychological counseling, participate in safety planning, or temporary or permanent relocation.

#### **MILITARY LEAVE**

California's military leave laws, found at Military & Veterans Code section 389 et seq. and the Uniformed Services Employment and Reemployment Rights Act ("USERRA") found at 38 U.S.C. Section 4301 et seq., ensure that employees are not adversely affected in their employment after taking leave for military service. Employees who serve in the military and are entitled to a military leave of absence without pay from the School under applicable laws should notify Human Resources regarding the need for military leave.

Please see Human Resources for more information regarding job reinstatement rights upon completion of military service.

#### **ADULT LITERACY LEAVE\*\*\***

Pursuant to California law, the School will reasonably accommodate any eligible employee who seeks to enroll in an adult literacy education program, provided that the accommodation does not impose an undue hardship on the School. The School does not provide paid time off for participation in an adult literacy education. However, you may utilize available PTO if you want compensation for this time off. If you do not have any PTO available, you will be permitted to take the time off without pay.

#### **ORGAN DONOR / BONE MARROW DONOR LEAVE\***

Pursuant to California law, the School will provide up to five business days of paid leave within a one-year period to an employee who donates bone marrow to another person. In addition, the School will provide up to 30 business days of paid leave within a one-year period and up to another 30 business days of unpaid leave within a one-year period to an employee who donates an organ to another person. The one-year period is measured from the date the employee's leave begins and shall consist of 12 consecutive months. The School requires that bone marrow donors use up to five days of available accrued PSL or vacation time during the course of the leave. Organ donors must use up to ten days of available accrued PSL or vacation time during the course of the leave.

The employee will also be given an additional unpaid leave of absence, not exceeding 30 business days in a one-year period, when that employee is an organ donor, for the purpose of donating the employee's organ to another person. The one-year period is measured from the date the employee's leave begins and shall consist of 12 consecutive months. To qualify for this leave, an employee must have been employed for at least 90 days prior to the commencement of the leave and must provide the School with written verification of his or her status as an organ or bone marrow donor and the medical necessity for the donation. During such leave, the School will continue coverage under its group medical insurance plan, if applicable. However, employees must continue to pay their portion of the applicable premiums. Employees should give the School as much notice as possible of the intended dates upon which the leave would begin and end.

This leave does not run concurrently with FMLA/CFRA. You may take this leave incrementally, as medically necessary, or all at one time. All health benefits shall be maintained during this leave to the extent they exist at the time of the leave. This leave shall not be considered a break in service and the employee shall continue to receive paid time off and other benefits as if they had continued working. An employee shall not have any greater rights during this leave than if he or she had been actively working during this time, but will be reinstated to their same or equivalent job prior to the leave. No employee shall be discriminated or retaliated against for taking an organ donation or bone marrow leave.

#### **DRUG & ALCOHOL REHABILITATION LEAVE\*\*\***

Your School will reasonably accommodate any employee who volunteers to enter an alcohol or drug rehabilitation program, if the reasonable accommodation does not impose an undue hardship on the School. Reasonable accommodation includes time off without pay and adjusting work hours. You may use allotted and unused sick leave. All reasonable measures to safeguard your privacy will be maintained.

This policy in no way restricts your School's right to discipline an employee, up to and including termination of employment, for violation of your School's Substance and Alcohol Policy.

#### **VOLUNTEER CIVIL SERVICE LEAVE**

You are allowed to be absent from work to engage in volunteer emergency duty as a volunteer firefighter, reserve police officer, or emergency rescue personnel. This is an unpaid leave, but the employee may use any earned sick, and/or PTO.

#### **CIVIL AIR PATROL LEAVE\*\***

Your School provides eligible employees who are volunteer members of the California Wing of the Civil Air Patrol and are called to emergency operational missions up to (10) days of unpaid leave per calendar year. Leave for a single emergency operational mission will generally be limited to three days unless an extension is granted by appropriate government entities and approved by the School.

To be eligible, employees must have been employed with the School for 90 days immediately preceding the commencement of leave. Additionally, the School may require certification from the proper Civil Air Patrol authority to verify the eligibility of the employee for the leave requested or taken. Employees may use available paid time off for leave taken under this policy. The notice and eligibility requirements for any such paid time off will generally apply to an employee's request for use of PTO under this policy.



## SECTION 8 – BENEFITS

### SCHOOL HOLIDAYS

The School observes 12 paid holidays during the year:

- New Year's Day
- Martin Luther King Day
- Lincoln's Birthday
- Washington's Birthday
- Memorial Day
- Independence Day
- Labor Day
- Veteran's Day
- Thanksgiving Day
- Day after Thanksgiving
- Christmas Eve Day
- Christmas Day

To be eligible for holiday pay, an employee must be full-time and non-exempt and must work both the business day before and after the holiday. Part-time employees, temporary employees, exempt employees and teachers are not eligible for holiday pay. Exempt employees and teachers will receive their regularly scheduled pay during holidays. Eligible employees will receive time off with pay at their regular rate of pay on the School-observed holidays listed above. When a holiday falls on a Saturday or Sunday, it is usually observed on the preceding Friday or following Monday. However, the School may close on another day. Holiday observance will be announced in advance. The School reserves the right to change this policy at any time, with or without notice.

Holiday hours do not count as hours worked for purposes of calculating overtime. For example, if you receive 8 hours of holiday pay on Monday and work 40 hours Tuesday-Saturday (8 hours/day), you will not be eligible for overtime.

Recognized religious holidays may be taken off by an employee whose religion requires observance of the particular day. Employees must request the day off in advance by written notice to their supervisor. The employee may use paid time off (PTO) if the employee has unused PTO available, otherwise the holiday will be unpaid. All steps will be taken to reasonably accommodate a religious holiday (or practice) absent an undue hardship.

To qualify for holiday pay, all employees must work the last scheduled day before and the first scheduled day after the holiday unless the employee is absent:

- At the Supervisor's request/approval
- Due to closure of schools because of inclement weather
- Due to sickness with a doctor's note verifying need for absence
- Prior to or following Jury Duty or Bereavement Leave
- Due to a previously scheduled and approved time off

### PAID TIME OFF (PTO) - SCHEDULE D-ADMINISTRATION

Full-time Administrative (Schedule D) school employees are entitled to paid time off (PTO) according to this policy. PTO days may be used for vacation, personal time, illness, or time off to care for family or dependents. All other employees, including teachers, temporary employees, part-time employees are not eligible to receive or accumulate PTO. PTO must be scheduled at least five (5) days in advance and approved by your supervisor, except in the case of an illness or emergency. In the case of illness or emergency you are required to contact your immediate supervisor at least one (1) hour before your shift begins, if possible or otherwise as soon as practicable. Employees using extended PTO time (in excess of three (3) days) must submit a request at least two (2) weeks before the extended PTO or, if used as sick time, the employee may be required to submit a doctor's release upon return to work. Your supervisor uses his/her discretion to approve PTO without advance notice.

Unless used for illness related purposes, PTO may not be taken the last week of the school year, or on scheduled in-service and/or training days, testing administration day, or immediately before or after holidays without supervisor's permission.

All full-time Administrative school employees may be eligible to receive up to ten (10) days (i.e., 80 hours) of PTO each school year (July 1- June 30). Once an employee's PTO balance reaches twenty (20) days (i.e., 160 hours), the employee stops receiving any additional PTO until PTO is used and the employee's balance falls below the 20-day cap. PTO days will not accumulate during any unpaid leave of absence.

The following terms also apply to PTO:

- For both non-exempt and exempt employees, vacation time may be taken in minimum increments of .25 hours. If an exempt employee absents himself or herself from work for part or all of a workday, he or she will be required to use available PTO to make up for the absence.
- In the event an employee has exhausted his or her PTO, any additional time off must be approved by their supervisor and will be taken without pay.
- Any employee who misses three (3) consecutive days of work without notice to their supervisor may be deemed to have abandoned his/her job and voluntarily resigned from employment.
- Upon separation of employment, employees will be paid their earned PTO based on their date of separation and their regular rate of pay.
- To the extent permitted by law, PTO accumulated prior to the start of a requested and approved unpaid leave of absence must be used to cover hours missed before the start of the unpaid leave.

As with all of its policies and procedures, the School reserves the right to modify, alter, or otherwise eradicate this policy at its sole and absolute discretion to the extent allowed by law.

### SICK LEAVE

The School enacted this policy in accordance with the California Healthy Workplaces, Healthy Families Act to provide paid sick leave ("PSL") to eligible employees.

#### Eligible Employees

All employees (including teachers, part-time and temporary employees) who work for the School more than 30 days within a year in California are allotted PSL as set forth in this policy.

#### Permitted Use

Eligible employees may use their allotted PSL to take paid time off for the diagnosis, care, or treatment of an existing health condition of (or preventive care for) the employee or the employee's family member. For purposes of this policy, "family member" means a child, parent, spouse, registered domestic partner, grandparent, grandchild, or sibling of the employee. "Child" means a biological child, a foster child, an adopted child, a step-child, a child of a registered domestic partner, a legal ward, or a child of a person standing in loco parentis. "Parent" means a biological, foster, or adoptive parent, a step-parent, or a legal guardian of the employee or the employee's spouse or registered domestic partner. "Spouse" means a legal spouse, as defined by California law. Employees may also use their PSL to take time off from work for reasons related to domestic violence, stalking, or sexual assault.

#### Allotment

PSL days are allotted as set forth below to eligible employees:

- Full-time employees:
  - On July 1 of each year, eligible employees will be allotted ten days (80 hours) of PSL per school year (July 1 – June 30), which unused PSL days will carryover year to year subject to a cap of 18 days (144 hours). Employees hired after July 1 but before December 31 will receive ten days (80 hours) of PSL on his or her first day of employment. Employees hired after December 31 will receive five days (40 hours) of PSL on his or her first day of employment.
- All other eligible employees:
  - All other eligible employees will be allotted three days (24 hours) of PSL each school year (July 1 – June 30) on July 1 or on his or her first day of employment, even if hired mid-year. PSL days are "use it or lose it" and, as such, do not carry over from year to year.

#### Limits on Use

Eligible employees may use PSL beginning on the 90th day of employment. PSL may be taken in minimum increments of .25 hours. If an exempt employee absents himself or herself from work for part or all of a workday for a reason covered by this policy, he or she will be required to use PSL to make up for the absence.

#### Notification

The employee must provide reasonable advance notification, orally or in writing, of the need to use PSL, if foreseeable. If the need to use PSL is not foreseeable, the employee must provide notice as soon as practicable. If you are out using sick time for more than 3 consecutive days a doctor's note is required to return to work. If a doctor's note is not supplied it will be unapproved unpaid time off unless previously arranged with your Director.

#### Termination

Employees will not receive pay in lieu of unused PSL. Unused PSL will not be paid out upon termination.

#### No Discrimination or Retaliation

The School prohibits discrimination or retaliation against employees for using their PSL.

**PAID SICK LEAVE DONATION POLICY****Personal Hardship**

Employees who have exhausted all paid sick leave (PSL) may request donations from co-workers through this policy. The PSL donation policy applies to employees suffering from a catastrophic illness or other medical emergency, which for the purposes of this policy, constitutes an employee's or a family member's medical condition that will require the prolonged/extended absence of the employee from duty and will result in a substantial loss of income to the employee due to the exhaustion of all PSL available.

**Eligibility**

Employees who are experiencing hardship due to a catastrophic illness or medical emergency are eligible to request and receive donations of PSL from other employees who have agreed to surrender leave to the School sponsored leave bank.

**Requests for Donations**

A written request for PSL donations that describes the specific medical emergency or medical condition must be submitted to Human Resources. Human Resources will verify the employee's eligibility, and make a written determination which will be given to the employee as soon as practical.

**Donations of Paid Leave**

Employees who have more than 24 hours of PSL and who wish to donate PSL to the School sponsored leave bank on behalf of an eligible employee shall complete a PSL Donation Form indicating the number of PSL hours to be donated and the employee, if any, who the employee requests receive the benefit of the donation. All such donations are voluntary and irrevocable.

1. Donating employees must maintain a minimum of 24 hours of PSL after reducing their leave balance to effect the donation.
2. In any 12-month period, no employee may donate more than 40 hours.
3. Voluntary donations of PSL are final upon submission of a signed PSL Donation Form that satisfies the conditions established by this policy. The donating employee's PSL balance account shall thereupon be reduced by the hours donated.
4. Donated hours not used by the eligible employee during the hardship period shall remain in the eligible employee's PSL account balance.
5. The names of donating employees, hours donated, and the value of such donations shall be kept confidential to the extent possible.

**Valuation of Donated PSL**

The value of the donated paid leave shall be determined by multiplying the number of hours donated by the donating employee's current hourly rate to determine the value of the donation in dollars ("Donation Value"). The Donation Value shall then be divided by the eligible employee's current hourly rate to determine the number of hours to be added to the eligible employee's PSL balance. Human Resources shall periodically notify the eligible employee of donations made pursuant to this policy. The eligible employee may then request to receive payment for these hours, which will be treated as taxable "wages" to such eligible employees for the payroll period utilized. No employee shall receive payment for more than 40 hours of paid leave, whether allotted or donated, during any week unless required by state or federal law.

**INSURANCE BENEFITS**

Full-time employees are entitled to insurance benefits offered by the School. These insurance benefits will include medical, dental, and vision. The School will set a defined contribution towards the employee's insurance premiums that are sponsored by the School. This amount will be determined on an annual basis. The employee's portion of the monthly premiums will be deducted from the employee's paycheck on a pre-tax basis.

If medical insurance premium rates increase, employees may be required to contribute to the cost of the increase to retain coverage. Unless otherwise mandated by law, employees on a leave of absence may be responsible for selecting continuing health coverage and paying the premium for such coverage through COBRA. If you have any benefit related questions while on a leave of absence, please contact Human Resources.

Full-time employees will also be covered under an insurance policy that includes Life Insurance at no cost to the full-time employee. Additional voluntary insurance plans will be offered through the School that will be the employee's responsibility to purchase and pay for.

**COBRA BENEFITS**

The Federal Consolidated Budget Reconciliation Act (COBRA) gives employees and their qualified beneficiaries the opportunity to continue health insurance coverage under the School's health plan when a "qualifying event" would normally result in the loss of eligibility.

Some common qualifying events are resignation, termination of employment, or death of an employee, a reduction in an employee's hours or leave of absence, divorce or legal separation, and a dependent child no longer meeting eligibility requirements.

Under COBRA, the employee or beneficiary pays the full cost of coverage at the School group rates plus an administration fee. The School or our carrier provides each eligible employee with a written notice describing rights granted under COBRA when the employee becomes eligible for coverage under the School's health insurance plan. The notice contains important information about the employee's rights and obligations.

**SOCIAL SECURITY/MEDICARE**

If you are a full time regular employee contributing to a teacher's retirement system STRS, your earnings from this job are not covered under Social Security. When you retire, or if you become disabled, you may receive a pension based on earnings from this job. If you do, and you are also entitled to a benefit from Social Security based on either your own work or the work of your spouse, or former spouse, your pension may affect the amount of the Social Security benefit you receive. Your Medicare benefits, however, will not be affected.

The School withholds income tax from all employees' earnings and, if elected, participates in FICA (Social Security), for temporary employees and Medicare withholding and matching programs as required by law.

**STATE DISABILITY INSURANCE (WAGE SUPPLEMENT)**

All employees are enrolled in California State Disability Insurance (SDI), which is a partial wage replacement insurance plan for California workers. Employees may be eligible for SDI when they are ill or have non-work related injuries, or may be eligible for work related injuries if they are receiving workers' compensation at a weekly rate less than the SDI rate. Specific rules and regulations relating to SDI eligibility are available from Human Resources.

**PAID FAMILY LEAVE (WAGE SUPPLEMENT)**

Under California law, eligible employees may participate in the Paid Family Leave ("PFL") program, which is part of the state's unemployment compensation disability insurance program. The PFL program provides up to eight weeks of partial wage replacement benefits to employees who take time off to care for a seriously ill or injured child, spouse, parent, registered domestic partner, siblings, grandparents, grandchildren, or parents-in-law or to bond with a new child (birth, foster care, adoption) The PFL program does not provide job protection or reinstatement rights. It is a wage supplement provided concurrently while an employee takes an eligible leave of absence under the School policy and applicable law.

The program will be administered in a manner consistent with California law. For more information regarding this program, you may contact the California Employment Development Department.

**WORKER'S COMPENSATION INSURANCE**

Eligible employees are entitled to workers' compensation insurance benefits when suffering from an occupational illness or injury. This benefit is provided at no cost to the employee.

In the event of an occupational injury or illness (as defined under Workers' Compensation Law) an employee may be covered by workers' compensation insurance instead of group insurance. If an employee should become injured or in any way disabled on the job, he or she must report the injury immediately to his or her supervisor. It is a felony to file a fraudulent or false workers' compensation claim.



## SECTION 9 – EMPLOYEE COMMUNICATIONS POLICY

### COMMUNICATIONS POLICY

Every employee is responsible for using the School's computer system, including, without limitation, its computers, laptops, iPads, tablets, cellular phones, electronic mail (Email) system, telephone, video conferencing, voicemail, facsimile systems and the Internet ("Communications Systems"), properly and in accordance with this policy. Any questions about this policy should be addressed to the employee's immediate supervisor.

The Communication Systems are the property of the School and have been provided for use in conducting School business. All communications and information transmitted by, received from, created, or stored in its School Communication Systems are records and property of the School. The Communication Systems are to be used for School purposes only. Employees may, however, use the School technology resources for the following incidental personal uses so long as such use does not interfere with the employee's duties, is not done for pecuniary gain, does not conflict with School business, and does not violate any School policies:

- To send and receive necessary and occasional personal communications;
- To use the telephone system for brief and necessary personal calls; and
- To access the Internet for brief personal searches and inquiries during meal periods or other breaks, or outside of work hours, provided that employees adhere to all other usage policies.

#### No Expectation of Privacy

The School has the right, but not the duty, to monitor any and all of the aspects of its Communication Systems, including, without limitation, reviewing documents created and stored on its Communication Systems, deleting any matter stored in its system (including, without limitation, its Email and word processing systems), monitoring sites visited by employees on the Internet, monitoring chat and news groups, reviewing material downloaded or uploaded by users to the Internet, and reviewing Email and instant messages sent and received by users and/or voicemails. Further, the School may exercise its right to monitor its Communications Systems for any reason and without the permission of any employee. Employee use of your school's Communication Systems constitutes consent to all the terms and conditions of this policy.

Even if employees use a password to access the Communication Systems (or any aspect thereof), the confidentiality of any message stored in, created, received, or sent from the School's Communication Systems is not assured. Use of passwords or other security measures does not in any way diminish the School's right to monitor and access materials on its Communication Systems, or create any privacy rights of employees in the messages and files on the system. Any password used by employees must be revealed to the School upon request for any reason that the School, in its discretion, deems appropriate. Further, employees should be aware that deletion of any Email messages, voicemails or files would not truly eliminate the messages from the system. All Email messages, voicemails and other files may be stored on a central back-up system in the normal course of data management. Employees have no expectation of privacy in anything they view, create, store, send, or receive on the Communication Systems.

Notwithstanding the foregoing, even though the School has the right to retrieve, read, and delete any information viewed, created, sent, received, or stored on its Communication Systems, Email messages should still be treated as confidential by other employees and accessed only by the intended recipient. Employees are not authorized to retrieve or read any Email messages that are not sent to them or by them. Any exception to this policy must receive the prior approval of the Executive Director.

#### Professional Use of Communication Systems Required

Employees are reminded to be courteous to other users of the system and always to conduct themselves in a professional manner. Emails and other text communications, in particular, are sometimes misdirected or forwarded and may be viewed by persons other than the intended recipient. Users should write Email communications with no less care, judgment, and responsibility than they would use for letters or internal memoranda written on the School letterhead.

#### Offensive and Inappropriate Material

The School's policy against discrimination and harassment, sexual or otherwise, applies fully to the School's Communication Systems, and any violation of that policy is grounds for discipline up to and including discharge. Therefore, no Email messages should be created, sent, or received if they contain intimidating, hostile, or offensive material concerning race, color, religion, sex, age, national origin, disability or any other classification protected by law. Further, material that is fraudulent, harassing, abusive, embarrassing, sexually explicit, profane, obscene, intimidating, defamatory, unlawful, inappropriate, or offensive (including offensive material concerning sex, race, color, national origin, religion, age, disability, or other characteristic protected by law) may not be downloaded from the Internet or displayed or stored in the School's computers. Employees encountering or receiving this kind of material should immediately report the incident to their Executive Director and Human Resources.

The School may (but is not required) to use software to identify inappropriate or sexually explicit Internet sites. Such sites may be blocked from access by the School networks. Employees who encounter inappropriate or sexually explicit material while browsing on the Internet should immediately disconnect from the site, regardless of whether the site was subject to the School's blocking software.

#### Solicitations

The School's Communication Systems may not be used to solicit for political causes, commercial enterprises, outside organizations, or other non-job-related solicitations. Approval from the Executive Director is required before anyone carpost any information on commercial on-line systems or the Internet.

#### Licenses and Fees

Employees may not agree to a license or download any material over the Internet for which a registration fee is charged without first obtaining the express written permission of his/her Executive Director.

#### Games and Entertainment Software

Employees may not use a School Internet connection to download games or other entertainment software, or to play games over the Internet.

#### Confidential Information

Employees may not transmit information over the Internet or through email that is confidential or proprietary. Employees are referred to the School's "Confidential Information" policy, contained herein, for a general description of what the School deems confidential or proprietary. When in doubt, employees must consult their immediate supervisor and obtain approval before transmitting any information that may be considered confidential or proprietary.

#### Copyrights and Trademarks

The School's Communication Systems may not be used to send (upload) or receive (download) copyrighted materials, trade secrets, proprietary financial information, or similar materials without prior authorization from his/her Executive Director. Employees, if uncertain about whether certain information is copyrighted, proprietary, or otherwise inappropriate for transfer, should resolve all doubts in favor of not transferring the information and consult a supervisor.

Any School approved material that is posted or sent via its computer system should contain all proper copyright and trademark notices. Absent prior approval from a supervisor to act as an official representative of the School, employees posting information must include a disclaimer in that information stating, "Views expressed by the author do not necessarily represent those of the School."

#### Maintenance and Security of the System

Employees must not deliberately perform acts that waste resources or unfairly monopolize resources to the exclusion of others. These acts include, but are not limited to, sending mass mailings or chain letters, spending excessive amounts of time on the Internet, playing games, streaming video or audio files, engaging in online chat groups, printing excessive copies of documents, or otherwise creating unnecessary network traffic. Because audio, video, and picture files require significant storage space, files of this or any other sort may not be downloaded unless they are business-related. In addition, employees should routinely delete outdated or otherwise unnecessary voicemails, Emails and computer files. These deletions will help keep the system running smoothly and effectively, as well as minimize maintenance costs.

To ensure security and to avoid the spread of viruses, employees accessing the Internet through a computer attached to the School's network must do so through an approved Internet firewall. Accessing the Internet directly by modem is strictly prohibited unless the computer you are using is not connected to the School's network. Files obtained from sources outside the School including disks brought from home; including files downloaded from the Internet, news groups, bulletin boards, or other online services; files attached to email; and files provided by customers or vendors, may contain dangerous computer viruses that may damage the School's computer network. Employees should never download files from the Internet, accept email attachments from outsiders, or use disks from non-School sources, without first scanning the material with the School approved virus checking software. If you suspect that a virus has been introduced into the School network, notify technology personnel immediately.

#### Violations of this Policy

Violations of this policy will be taken seriously and may result in disciplinary action, including possible termination, and civil and criminal liability.

#### Amendment and Modification of this Policy

The School reserves the right to modify this policy at any time, with or without notice. The School may require employees to acknowledge and comply with a separate Acceptable Use Policy for Internet and Network Resources, which shall contrain the event of a conflict.

### SOCIAL MEDIA POLICY

The School has adopted the following policy with regard to employees' behavior on social networking sites including but not limited to Facebook, Twitter, LinkedIn, Pinterest, Instagram, SnapChat and YouTube. If you wish to use networking protocols or set up a social media site as a part of the educational process, please work with your administrators and technology staff to identify and use a restricted, School-endorsed networking platform. Such sites will be the property of the School who will have unrestricted access to, and control of, such sites.

Employees shall not accept students as friends on any personal social networking sites and are to decline any student-initiated friend requests. Teachers are not to initiate “friendships” with students or parents. Employees must delete any students already on their “friends” list immediately.

With regard to social networking content, employees should not use commentary deemed to be defamatory, obscene, proprietary, or libelous with regard to any School-related business or policy, employee, student, or parent. Additionally, employees should exercise caution with regards to exaggeration, obscenity, copyrighted materials, legal conclusions, and derogatory remarks or characterizations. Employees should weigh whether a particular posting puts his/her effectiveness as a School employee at risk. The School encourages employees to post only what they want the world to see. Imagine that students, their parents, or administrators will visit your site as most information is available to the general public even after it is removed from the site. Employees may not discuss students nor post images that include students.

Due to security risks, employees must be cautious when installing the external applications that work with the social networking site. At a minimum, it is recommended that all employees should have all privacy settings set to “Only Friends”. The settings “Friends of Friends” and “Networks and Friends” open your content to a large group of unknown people, including students.

#### Personal or Professional Blogs

If you are developing a website or writing a blog that will mention the School, you must identify that you are an employee of the organization and that the views expressed on the blog or web site are yours alone and do not represent the views of the School. Unless given permission by your Executive Director, you are not authorized to speak on behalf of the School or to represent that you do so. If you are developing a site or writing a blog that will mention the School, as a courtesy to the organization, please let your Executive Director know in advance of publication. Your Executive Director may choose to visit your blog or social networking site from time to time.

You may not share information that is confidential and proprietary with regard to the School. This includes, but is not limited to, information about curriculum, School dynamics, School programs, future goals, or current challenges within the organization. These are given as examples only and do not cover the range of what the School considers confidential and proprietary. If you have any questions about whether information has been released publicly or doubts of any kind, speak with your Executive Director and Human Resources.

When writing a blog or participating in any other social networking site, employees should speak respectfully about the School and our current and potential employees, students, parents, and competitors. Name-calling or behavior that will reflect negatively on the organization’s reputation is discouraged. Note that the use of copyrighted materials, unfounded, harassing, libelous, or derogatory statements, or misrepresentation is not viewed favorably by the School and can result in disciplinary action, up to, and including termination.

All employees who engage in social networking may be legally liable for anything he/she writes or presents online. Employees can be disciplined, if appropriate, by the School for commentary, content, or images that are defamatory, pornographic, proprietary, harassing, libelous, or that can create a hostile work environment.

This policy should not be construed, and will not be applied, in a manner that violates employee rights under the National Labor Relations Act. Employees may not comment on a student’s blog or a student’s other social networking commentaries. Employees may not use trade names, or logos belonging to the School without express written permission of the Executive Director. Failure to comply with the School’s social media policy will result in disciplinary action, up to, and including, immediate termination.

#### EQUIPMENT POLICY

The School attempts to provide all staff members with the equipment and supplies needed to do their job. Providing equipment is a great expense to the School. It is expected that everyone will protect and care for all equipment and supplies issued to them. Staff members are responsible for the cost of lost, stolen, or broken items issued to them including: keys, textbooks, teacher guides, laptops, and any other equipment that may be assigned to them if the loss is due to willful misconduct or gross negligence.

#### Laptop Computers

Each staff member assigned a laptop for professional use shall be required to sign a laptop Agreement Form and will be charged for any damages, loss or theft to the laptop caused by willful misconduct or gross negligence.

Although issued to an individual employee, all computing devices are considered the personal property of the primary organizational unit to which the receiving employee belongs and shall be returned upon termination of employment with the School, after reassignment of job duties or immediately upon request at any time by an official of the School. Employees are expected to take all appropriate measures and precautions to prevent the loss, theft, damage and/or unauthorized use of such equipment. Such precautions shall include, but not be limited to the following:

- Keep the computing device in a locked and secured environment when not being used;
- Do not leave the computing device for prolonged periods of time in a vehicle, especially in extreme temperatures;
- Keep food and drinks away from all computing devices and work areas;
- Do not leave the computing device unattended at any time in an unsecured location (e.g., an unlocked empty office); and
- Keep the computing device in sight at all times while in public places, such as public transportation, airports, restaurants, etc. Should an employee’s computing device be lost or stolen, the employee must:
  - Immediately report the incident to his/her immediate supervisor and IT.
  - Obtain an official police report documenting the theft or loss; and
  - Provide a copy of the police report to his/her immediate supervisor, or Executive Director and IT.

If the employee fails to adhere to these procedures, the employee may be held legally and financially responsible to the School for the replacement of such equipment. The School is under no legal, financial or other obligation to provide for a replacement computing device to any employee whose device is lost, stolen or damaged.

There is no expectation of privacy in School equipment. The School may add security and other tracking technology to any and all computing devices issued by it and any and all such usage is subject to management review, monitoring, and auditing by the School. Other audits may be performed on the usage and internal controls as deemed necessary. Non-compliance with any policies or procedures regarding Employee Computers and Portable Computing Devices issued by the School will result in appropriate disciplinary action and/or reimbursement of any and all costs to the School.

#### CELL PHONE POLICY

Personal cell phones should not be used while you are working if assigned to a location. Cell phones should be turned off and stored with your other personal belongings while you are working. If you are required to perform business on a cell phone for the School while driving, you must utilize the hands-free option on the cell phone or a headset/earpiece device. Sending, writing, or reading text based communications on your cell phone while driving a School vehicle or your own vehicle to conduct School business is prohibited. Text based communications include, but are not limited to, text messages, instant messages, and email. If you are assigned a School cell phone to conduct School business, please notify your supervisor if the cell phone is misplaced, stolen, or damaged. Personal calls, received or placed, are not allowed on School cell phones.

#### Telephone Calls and Texting

While at work and during staff meetings, the employee’s undivided attention is expected. Cell phones, texting, and pagers are not allowed so that the activities or discussion are not disturbed. Employees should wait to make personal phone calls during breaks.

#### NO SOLICITATION/DISTRIBUTION POLICY

In order to minimize non-work-related activities that could interfere with providing quality education, teamwork, and safety, the School has established the following policy concerning solicitation and the distribution of written materials other than those directly related to the School’s business.

Non-employees may not solicit or distribute written materials of any kind at any time on premises that are owned, leased, operated, managed, or controlled by the School.

Employees may not solicit other employees during the workday when either the person doing the solicitation or the person being solicited is engaged in or required to be performing work tasks. Employees may not distribute written materials of any kind during the workday when either the distributing employee or the employee receiving the materials is engaged in or required to be performing work tasks.

Additionally, distribution of written materials of any kind by the School employees is prohibited at all times in all working areas on School premises.

Employees may solicit other employees when both parties are on non-work time. Employees may distribute written materials in non-work areas during non-work time.

The sole exceptions to this policy are charitable and community activities supported and approved by the School. School bulletin boards are the only areas where any merchandise or notices may be placed. Such items must meet the guidelines established by the School. The School must approve any postings prior to posting.

The School reserves the right to discontinue any solicitation or distribution if the activities become disruptive to employees or the efficient operation of the School’s business.

Employees are required to leave School premises and other work areas at the completion of their workday. Employees are not permitted to enter or remain on School premises or work areas unless the employee is on duty, scheduled for work, coming to or departing from scheduled work, or otherwise has specific authorization from their supervisor.

#### Definitions

School “premises”: property owned, leased, operated, managed, or controlled by the School, including buildings, parking lots, and play areas that the School has the right to use exclusively or in common with others, vehicles owned or operated by the School.

Work time: any time when employees are engaged in or required to be performing work tasks. Work time does not include break periods, meal times, or other periods during the workday when employees are properly not engaged in performing their work tasks.

Work areas: all areas controlled by the School where employees are performing work, except cafeterias, employee break areas, and parking lots (non-work areas).



#### Employee Responsibility

If you have a need to solicit and/or distribute materials on School premises, it must be in compliance with this policy. If you have questions, talk with Human Resources. If solicitation or distribution is conducted within the parameters of this policy, the manner of activities must not harass or intimidate other employees. If you are subjected to such behavior at any time, report the activity to your supervisor. If solicitation or distribution occurs while you are working, report the activity to your supervisor.

#### ANTI-NEPOTISM POLICY

##### Policy Statement

It is the policy of the School to avoid Nepotism, which means to avoid creating or maintaining circumstances in which the appearance or possibility of favoritism, conflicts of interest, or management disruptions exist due to a relationship between the School decision-maker and his or her Family Member. This policy is to ensure effective supervision, internal discipline, security, safety, and positive morale in the workplace and to avoid the potential for problems of actual or perceived favoritism, conflicts in loyalty, discrimination, and appearances of impropriety or conflict of interest. This policy applies to all the School board members, employees, individual consultants hired or retained by the School, and School Services Providers hired or retained by the School.

Relationships between School Board Members, Employees, Consultants, or School Services Providers are permissible under the following circumstances:

Family Members of the School board members, employees, individual consultants, or School Services Providers shall not be hired for or retained in an employment position if one Family Member would have the authority or be in a position to directly supervise, hire, or discharge the other.

- (a) Any time a Board Member, employee, individual consultant, or School Services Provider is a Family Member of another, the relationship shall not result in an adverse impact on work productivity or performance. The determination of whether there is an adverse impact shall be in the discretion of the supervisor(s) of the employee(s), consultant(s), or School Services Provider(s), or in the case of a board member, at the discretion of the School Board of Directors.
- (b) Any time a Board Member, employee, individual consultant, or School Services Provider is a Family Member of another, the relationship shall not create an actual conflict of interest under the law, and shall not create a detrimental perceived conflict of interest. The determination of whether there is a detrimental perceived conflict of interest shall be at the discretion of the supervisor(s) of the employee(s), consultant(s) or School Services Provider(s), or in the case of a Board Member, at the discretion of the School Board of Directors.

##### Definitions

"Family Members" include an employee's parent, child (natural, adopted, or legal guardianship), spouse, domestic partner, brother, sister, grandparent, grandchild, step-relationships within the preceding categories, brother-in-law, sister-in-law, son-in-law, daughter-in-law and father-in-law.

"Nepotism" describes a work-related situation in which there is the potential for favoritism toward a Family Member (such as giving a job, promotion, biased performance reviews, or more favorable working conditions) on the basis of the familial relationship.

"School Services Provider" shall mean any provider of school services to the School, and in the case of an organization shall mean be the responsible individual at such organization that provides school services to the School.

##### Procedures

When a Family Member of a current the School Board Member, employee, individual consultant, or School Services Provider applies to become a board member or employee, or requests to be a consultant or School Services Provider, the Family Member's application/request must be denied if a conflict under this policy exists (e.g., if one Family Member would have the authority or be in a position to directly supervise, hire, or discharge the other). Special circumstances may be reviewed by the Board in the event that the School's best interests would be served otherwise.

When a Family Member of a current School Board Member, employee, individual consultant, or School Services Provider applies for a transfer to a new employment position within the School, the Family Member's application must be evaluated to determine whether a conflict under this policy exists. If a conflict exists, the application for transfer must either be denied or one of the Family Members must seek a position transfer to avoid the conflict, if any such opportunity exists. In the event that no such opportunity exists, the application for transfer must be denied.

In implementing this policy, it is permissible to ask an applicant, potential consultant, or School Services Provider to state whether he or she has a Family Member who is presently employed by or on the board of the School, but such information may not be used as a basis for an employment decision except as stated herein. When a relationship that creates a conflict with this policy occurs during employment, the School will attempt to arrange a transfer or change in position/duties to eliminate the conflict. If a suitable transfer/change in position/duties is not available, one of the employees may be separated from service. Every attempt will be made to effect transfer or separation on the basis of agreement between the employees involved and the School. If a mutual agreement is unattainable, the Board will determine, in the School's best interest, which employee is to be transferred or separated.

##### Responsibilities

The Executive Director or designee shall coordinate with the current employee's direct supervisor to develop appropriate plans to ensure that a Family Member's employment does not conflict with this policy. If the situation cannot be resolved by a transfer, then the Executive Director or designee will deny the application for employment. Special circumstances may be reviewed by the Board in the event that the School's best interests would be served by the employment of a Family Member.

The Executive Director or designee shall investigate reports of Nepotism and take appropriate action. Employees are required to disclose changes in their personal situations to the Executive Director or designee which may be covered by this policy. Supervisors may inquire about the family relationship between employees to determine the appropriateness of the working relationship under this policy. The Board shall make the final determination concerning potential conflicts with this policy involving the Executive Director.

#### VIOLENCE IN THE WORKPLACE

The School has adopted a policy prohibiting workplace violence. Consistent with this policy, acts or threats of physical violence, including intimidation, harassment, bullying, and/or coercion, which involve or affect the School or which occur on the School property will not be tolerated. Examples of workplace violence include, but are not limited to, the following:

- All threats or acts of violence occurring on the School premises, regardless of the relationship between the School and the parties involved
- All threats or acts of violence occurring off the School premises involving someone who is acting in the capacity of a representative of the School

Specific examples of conduct, which may be considered threats or acts of violence, include, but are not limited to, the following:

- Hitting or shoving an individual
- Threatening an individual or his/her family, friends, associates, or property with harm
- Intentional destruction or threatening to destroy the School property
- Making harassing or threatening phone calls
- Harassing surveillance or stalking (following or watching someone)
- Unauthorized possession or inappropriate use of firearms or weapons

The School's prohibition against threats and acts of violence applies to all persons involved in the School's operation, including but not limited to all personnel, contract, unpaid interns, volunteers and temporary workers, and anyone else, including parents on the School property. Violations of this policy by any individual on the School property will lead to disciplinary action, up to and including termination and/or legal action as appropriate. All employees are encouraged to report incidents of threats or acts of physical violence of which they are aware to their supervisors, to their Executive Director and Human Resources.

If an employee becomes aware of an imminent act of violence, a threat of imminent violence, or actual violence, emergency assistance must be sought immediately. In such situations, the employee should contact the law enforcement authorities by dialing 911. Immediately after contacting the law enforcement authorities, employee must report the incident. There will be no retaliation against any employee who brings a complaint in good faith under the Violence in the Workplace Policy or who honestly assists in investigating such a complaint, even if the investigation produces insufficient evidence that there has been a violation, or if the charges cannot be proven. However, disciplinary action may be taken against employees who, in bad faith, make false or frivolous accusations.

In certain circumstances, the School may seek a workplace violence restraining order on behalf of one or more employees in furtherance of its commitment to providing a workplace that is free from acts of violence or threats of violence.

## SECTION 10 – STANDARDS OF CONDUCT

### PERSONAL STANDARDS

Each employee must be neatly groomed and wear clothing that is professional and appropriate for the employee's position. Your Executive Director or immediate supervisor will inform you of any special clothing requirements. Employees will not be permitted to wear clothing or otherwise present an appearance that may cause disruption, be taken as offensive, or reduce productivity.

Consult your supervisor if you have any questions regarding appropriate attire.

### TEACHER-STUDENT INTERACTIONS

#### Boundaries Defined

For the purposes of this policy the term "boundaries" is defined as acceptable professional behavior by staff members while interacting with a student. Trespassing beyond the boundaries of a student-teacher relationship is deemed an abuse of power and a betrayal of public trust.

#### Acceptable and Unacceptable Behavior

Some activities may seem innocent from a staff member's perspective, but some of these activities can be perceived as flirtation or sexual insinuation from a student or parental point of view. The purpose of the following lists of unacceptable and acceptable behaviors is not to restrain innocent, positive relationships between staff and students, but to prevent relationships that could lead to, or may be perceived as, inappropriate or sexual misconduct.

Staff members must understand their own responsibilities for ensuring they do not cross the boundaries as written in this policy. Disagreeing with the wording or intent of the established boundaries will be considered irrelevant for any required disciplinary purposes. Thus, it is critical that all employees study this policy thoroughly and apply its spirit and intent in their daily activities.

#### Unacceptable Behaviors

These lists, and any subsequent lists, are not meant to be all-inclusive, but rather illustrative of the types of behavior addressed by this policy.

- Giving gifts to an individual student that are of a personal and intimate nature
- Kissing of ANY kind
- Any type of unnecessary physical contact with a student in a private situation
- Intentionally being alone with a student away from school
- Making, or participating in, sexually inappropriate comments
- Sexual jokes, or jokes/comments with sexual overtones or double-entendres
- Seeking emotional involvement (which can include intimate attachment) with a student beyond the normative care and concern required of an educator
- Listening to or telling stories that are sexually oriented
- Discussing inappropriate personal troubles or intimate issues with a student in an attempt to gain their support and understanding
- Becoming involved with a student so that a reasonable person may suspect inappropriate behavior
- Giving students a ride to/from school or school activities without parental permission
- Being alone in a room with a student at school with the door closed
- Allowing students in your home without signed parental permission for a pre-planned and pre-communicated educational activity which must include another educator, parent, or other responsible adult
- Remarks about the physical attributes or physiological development of anyone
- Excessive attention toward a particular student
- Sending emails, text messages, Facebook responses, or letters to students if the content is not about school activities

#### Acceptable and Recommended Behaviors

- Obtaining parent's written consent for any school activity (exclusive of tutorials)
- Obtaining formal approval (site and parental) to take students off school property for activities such as field trips or competitions
- Emails, text-messages, phone conversations, and other communications to and with students, if permitted, must be professional and pertain to school activities or classes (communication should be initiated via school-based technology and equipment)
- Keeping the door open when alone with a student
- Keeping reasonable and appropriate space between you and the student
- Stopping and correcting students if they cross your own personal boundaries
- Keeping parents informed when a significant issue develops about a student
- Keeping after-class discussions with a student professional and brief
- Immediately asking for advice from senior-staff or administration if you find yourself in a difficult situation related to boundaries
- Involving your supervisor in discussion about boundaries that have the potential to become more severe (including but not limited to: grooming or other red flag behaviors observed in colleagues, written material that is disturbing, or a student's fixation on an adult)
- Making detailed notes about an incident that in your best judgment could evolve into a more serious situation later
- Recognizing the responsibility to stop unacceptable behavior of students and/or co-workers
- Asking another staff member to be present, or within close supervisory distance, when you must be alone with a student after regular school hours
- Prioritizing professional behavior during all moments of student contact
- Asking yourself if any of your actions, which are contrary to these provisions, are worth sacrificing your job and career

#### Reporting

When any staff member becomes aware of another staff member, volunteer, guest or vendor having crossed the boundaries specified in this policy, or has a reasonable suspicion of misconduct, he or she must report the suspicion to their immediate supervisor, Human resources or the Executive Director promptly. Reasonable suspicion means it is based on facts which would lead a reasonable person to believe the conduct occurred. Prompt reporting is essential to protect students, the suspected staff member, any witnesses, and the School as a whole. Employees must also report to the administration any awareness of, or concern about, student behavior that crosses boundaries, or any situation in which a student appears to be at risk for sexual abuse.

#### Investigating

The School will promptly investigate and document the investigation of any allegation of sexual misconduct or inappropriate behavior, using such support staff or outside assistance, as it deems necessary and appropriate under the circumstances. Throughout this fact-finding process, the investigating administrator, and all other privy to the investigation, shall protect the privacy interests of any affected student(s) and/or staff member(s) including any potential witnesses, as much as possible.

#### Consequences

Staff members who have violated this policy will be subject to appropriate disciplinary action, and where appropriate, will be reported to authorities for potential legal action.

### CUSTOMER & PUBLIC RELATIONS

The School's image in front of students, parents (i.e. our "customers") and the general public is critical to our success. All employees are expected to be prompt, polite, courteous and attentive to our customers and the public. It is possible an employee may come into contact with a dissatisfied or hostile individual based on the nature of the employee's work. If this happens, you should immediately notify your supervisor, Human Resources, or the Executive Director. We will absolutely not tolerate conduct toward our customers or the general public that might be interpreted as unlawful discrimination or harassment. Human resources will open an investigation into the instance and document any findings. After the investigation has concluded the report and the findings will be filed with Human Resources. If you witness conduct in violation of this policy, you should immediately bring it to the attention of your supervisor or the Executive Director. A Report will be created and documentation will be filed with Human Resources.

### PROHIBITED CONDUCT

The following is a list of conduct that is prohibited and will not be tolerated by the School. It is not an all-inclusive list, but rather a list designed to give examples of the types of conduct prohibited by the School.

- Falsification of employment records, employment information, or other School records
- Recording the work time of another employee or allowing any other employee to record your work time, or allowing falsification of any time card, either your own or another's
- Theft, deliberate or careless damage, or loss of any School property or the property of any employee or customer
- Provoking a fight or fighting during working hours or on School property
- Participating in horseplay or practical jokes on School time or on School premises where such conduct might be a safety risk or might be interpreted as offensive
- Carrying firearms or any other dangerous weapons on School premises at any time or while acting on behalf of the School
- Violation of the Substance and Alcohol policy
- Insubordination, including but not limited to, failure or refusal to obey the orders or instructions of a supervisor or member of administration, or the use of abusive or threatening or abusive language toward a supervisor or member of administration
- Unreported absence on scheduled workdays unless otherwise excused
- Excessive tardiness or absenteeism unless otherwise excused
- Unauthorized use of School equipment, time, materials, facilities, or the School name
- Sleeping or malingering on the job
- Failure to observe working schedules, including the required rest and meal periods
- Soliciting other employees for membership, funds, or other similar activity in connection with any outside organization during your working time or the working time of the

employee(s) solicited

- Distributing unauthorized literature or any written or printed material during working time or in work areas ("Working time" does not include your meal and break periods.)
- Failure to timely notify your supervisor when you are unable to report to work
- Failure of an employee to obtain permission to leave work for any reason during normal working hours
- Abuse of sick leave
- Violation of the Communications Policy
- Failure to provide a physician's certificate when requested or required to do so
- Violating the School's Personal Standards or dresscode
- Breaching confidentiality
- Making derogatory racial, ethnic, religious, or sexual remarks or gestures; any violation of the Harassment and/or Equal Employment Opportunity policy; or using profane or abusive language at any time on School premises or during working hours
- Violation of any safety, health, security, or School rule
- Negligence or other conduct leading to the endangerment of harm of a child or children
- Working overtime without authorization or refusing to work assigned overtime
- Unsatisfactory job performance
- Willfully or maliciously making false statements regarding any co-worker or submitting a complaint known to be false.

#### **CONFIDENTIAL INFORMATION**

It is important to the School to protect and preserve its trade secrets and confidential information. Confidential information includes, but is not limited to, student information, all student lists, techniques and concepts, marketing plans, design specifications, design plans, strategies, forecasts, bid plans, bid strategies, bid information, contract prices, new products, software, computer programs, writings, and all know-how and show-how whether or not protected by patent, copyright, or trade secret law.

The School prohibits audio or video recordings in the workplace, during working hours, without authorization of the School due to privacy and confidentiality concerns and protections. The School devotes significant time, energy, and expense to develop and acquire its trade secrets and confidential information. As an employee of the School you will, during the course of your employment, have access to and become familiar with various trade secrets and confidential information that are owned by the School. An employee shall not, directly or indirectly, disclose or use any of the foregoing information other than for the sole benefit of the School, either during the term of your employment or at any other time thereafter. This information shall not be disclosed except through normal channels and with authorization. Any and all trade secrets or confidential information shall be returned to the School during extended leaves of absence or upon termination.

During your employment with the School, you will not be permitted nor required to breach any obligation to keep in confidence proprietary information, knowledge, or data acquired during your former employment. You must not disclose to the School any confidential or proprietary information or material belonging to former employers or others.

Violations of this policy may result in disciplinary action, up to and including termination.

#### **CONFLICTS OF INTEREST**

All employees must avoid situations that result in actual or even potential conflicts of interest. Personal, social, and economic relationships with competitors, suppliers, customers, parents, or co-employees that may impair an employee's ability to exercise good judgment on behalf of the School or which give the appearance of such impairment create an actual or potential conflict of interest. For example, romantic or personal relationships between a supervisor and subordinate employee can lead to supervisory problems, claims of harassment, and morale problems.

Any employee involved in such situations or relationships must immediately and fully disclose the nature of the situation or relationship to the Executive Director so a determination can be made as to whether an actual or potential conflict exists, and if so, how to correct the situation.

The School expects employees to devote their best efforts to the interests of our school. The School recognizes your right to engage in activities outside of your employment, which are of a private nature and unrelated to our business. However, outside activities (second jobs, side businesses, clubs, etc.) must not interfere with your ability to fully perform your job duties at the School or create a conflict of interest with your statutory duty of loyalty to the School. The School prohibits employees from working with another School or external organization that competes with the School whether as a regular employee or as a consultant.

If you have any questions whether an action or proposed course of conduct would create a conflict of interest, you should immediately contact the Executive Director to obtain advice on this issue. A violation of this policy will result in immediate and appropriate discipline, up to and including, immediate termination.

This policy is in addition to the School's Revised Nonprofit Conflict of Interest Policy and Conflict of Interest Code.

#### **Outside Employment**

If you are a full time employee we expect that you devote your full professional effort to your position at the School. If you wish to participate in outside work activities you are required to obtain written approval from the Executive Director prior to starting those activities. Approval will be granted unless the activity conflicts with the School's interests. In general, outside work activities are not allowed when they:

- Prevent you from performing work for which you are employed at the School.
- Involve organizations that are doing or seek to do business with the School including actual or potential vendors.
- Violate provisions of law or the School policies or rules.
- When the employee is on a medical leave (FMLA/CFRA/PDL or any other medical leave)

Your obligations to the School must be given priority. Full time employees are hired and continue employment with the understanding that the School is their primary employer and that other employment, commercial involvement or volunteer activity that is in conflict with the business interests of the school is strictly prohibited.

#### **POLICY REGARDING INCONSISTENT, INCOMPATIBLE OR CONFLICTING EMPLOYMENT, ACTIVITY OR ENTERPRISE BY SCHOOL PERSONNEL**

##### **Policy Statement**

It is the policy of the School that its officers and employees may not engage in any outside activity, employment, or enterprise for compensation which is inconsistent, incompatible with, or in conflict with, his or her duties as an officer or employee of the School. During working hours or on school premises, officers or employees shall not engage in political or religious activities, or recruit or solicit students or members of the public for political or religious activities.

An officer's or employee's outside activity, employment, or enterprise for compensation shall be determined to be inconsistent, incompatible with, or in conflict with, his or her duties as an officer or employee of the School if any of the following apply:

1. It involves the use of the School time, facilities, equipment, supplies, or the officer's or employee's position or influence with the School, for private gain or advantage.
2. It involves receipt or acceptance by the officer or employee of any money or other consideration for the performance of an act that would otherwise be required within the scope of the officer or employee's duties with the School.
3. It involves the performance of an act as part of the outside activity that involves services performed for the School.
4. It affects the officer's or employee's work hours, interferes or conflicts with the officer's or employee's job duties, raises any ethical or conflict of interest concerns, or creates any conditions that impact the officer's or employee's job performance.
- 5.

Officers and employees may not use the School's name, logo, supplies, equipment or other property in connection with any outside activities.

##### **Procedure**

In the event that an officer or employee believes that an outside activity for compensation may be inconsistent, incompatible with, or in conflict with, his or her duties as an officer or employee of the School, the officer or employee shall obtain a written determination of the Executive Director or his or her designee that the outside activity is not in violation of this policy before engaging in such activity.

#### **EXPENSE REIMBURSEMENT POLICY**

The School policy is to reimburse its employees for all reasonable and necessary expenditures or losses incurred in direct consequence of the discharge of their duties.

##### **Personal Cell Phones**

Employees are not required to use their personal cell phones to perform work on behalf of the School. The School has provided employees with a Google Voice account or similar service for any calls related to School work. If an employee elects to use his or her personal cell phone, such use is a voluntary choice and is not reasonable or necessary to the performance of the employee's duties. As such, employees will not be reimbursed for using personal cell phones.

##### **Internet Expenses**

Employees are not required to use their personal internet access (WiFi) to perform work on behalf of the School. The School has provided employees with a mobile hot spot for any work performed on behalf of the School requiring Internet access. If an employee elects to use his or her personal Internet access, such use is a voluntary choice and is not reasonable or necessary to the performance of an employee's duties. As such, employees will not be reimbursed for using personal Internet access.

##### **Utilities**

Employees who are required to use some of their personal utilities (e.g. electricity) while performing remote work on behalf of the School may receive a stipend for reimbursement of the employee's use of their personal utilities. The School has reviewed objective data regarding the range of costs for utilities and established a \$15.00 utilities stipend per month based on its good faith belief that the stipend will more than fully reimburse employees for any reasonable and necessary expense incurred in using some of their personal utilities while performing



work on behalf of the School.

If an employee believes that the stipend is insufficient to reimburse all reasonable expenses necessarily incurred in using their personal utilities while performing work on behalf of the School, the employee must immediately report this expense issue to the School's Human Resources Department. Employees will be required to submit documentation to support any request for additional utilities reimbursement.

#### Travel

All teachers are expected to serve students in-person, that are assigned or requested on their roster and are required to drive up to 60 miles and/or one hour to meet with their students as part of their normal commute\*.

\*Commuting miles are the miles you drive between your home and regular workplace. These miles are viewed as a personal expense and can't be deducted in personal taxes or reimbursed as a business expense by your employer.

If and when the School requires employees to drive their personal vehicle to perform duties on behalf of the School (in the course and scope of employment) beyond their normal commute, the School will reimburse employees for the reasonable and necessary expense of using their personal vehicle on behalf of the School. ~~Employees are not authorized to drive their personal vehicle on behalf of the School without written authorization from the Executive Director of the School.~~

~~If authorized to drive,~~ Employees will receive a monthly reimbursement payment from the School for mileage expenses incurred beyond the employees' normal daily commute of up to 60 miles and/or a distance of one hour from their home. Employees will be paid for mileage reimbursement at the per mile rate amount designated by the Federal Internal Revenue Service, at the time the miles are driven on behalf of the School.

Employees are required to submit:

- a monthly written report of all miles driven
- with a printed map showing the locations driven, on behalf of the School during that month.

If any employee believes that the mileage reimbursement that he or she receives from the School is insufficient to reimburse the employee for all reasonable expenses necessarily incurred by the employee in using his or her personal vehicle on behalf of the School, the employee must immediately report this expense issue to the School's Human Resources Department. Employees may be required to submit additional documentation to support any request for additional mileage reimbursement.

#### Other Expenses

With the exception of those employees who are required to use their personal utilities during the course and scope of their employment with the School, it is the School's policy to provide its employees with all necessary equipment to perform their duties on behalf of the School. The School does not require employees to purchase any additional equipment in order to perform work for the School. If any employee believes that additional equipment is reasonable and necessary to perform his or her duties on behalf of the School, the employee must immediately notify the School's Human Resources Department.

#### Office Supplies

The School will issue employees an allocated amount to utilize office supplies on a per semester basis for the purchase of ink (if applicable), paper and miscellaneous desk supplies (e.g. staplers, paper clips, writing utensils and file folders). Any other items outside these categories must be pre-approved by the employee's supervisor before an employee purchases any other item using the School issued gift card.. To the extent an employee believes additional funds in excess of the allotment due to employment status are reasonable and necessary to perform his or her job during the applicable semester, the employee must immediately notify the Human Resources Department. If the employee does not spend the allocated amount, the remaining balance does not transfer to the next fiscal school year.

If employees choose to purchase additional equipment or supplies without written authorization from the School, such expenses would not be reasonable or necessarily incurred in connection with work for the School. Those expenses would be optional expenses that employees voluntarily elect to incur and not reasonably necessary expenditures incurred by employees in direct consequence of the discharge of their duties for the School.

If, however, an employee believes that he or she has been required to incur any unexpected necessary and reasonable expense in order to perform his or her duties on behalf of the School, the employee should immediately report that expense to the School's Human Resources Department. Employees will be required to submit documentation to support any request for reimbursement of such expenses.

#### Reporting

If any employee believes that he or she has not been fully reimbursed for all reasonable and necessary expenses he or she has been required to incur while working for the School, the employee should immediately inform the School's Human Resources Department. All reports of possible inadequate reimbursement will be promptly reviewed, including a review of all of the employee's expense related records and receipts. If, as a result of the review, it is determined that the employee has been inadequately reimbursed for actual and necessary business expenses, the School will promptly reimburse the employee, in full, for all actual, reasonable and necessary business-related expenses incurred. It is every employee's responsibility to keep accurate records and receipts of all business related expenses for the purpose of requesting reimbursement.

There will be no retaliation against any employee who reports an expense reimbursement issue in good faith or who honestly assists in reviewing such an issue, even if the review produces insufficient evidence that there has been a violation.

#### **POLICY CONFIRMING RESTRICTION ON THE PROVISION OF FUNDS OR OTHER THINGS OF VALUE TO STUDENTS, PARENTS OR GUARDIANS**

##### Policy Statement

It is the policy of the School that the School shall not provide any funds or thing of value to any student or his or her parent or guardian that a school district could not legally provide to a similarly situated student, or his or her parent or guardian. The School does not and shall not provide, for example, "sign up bonuses" to parents or guardians or other incentives unrelated to education.

Additionally, a student, parent or guardian shall not use his or her status as a student, parent or guardian with the School in order to obtain funds or things of value from the School. For example, this policy prohibits an individual from utilizing his or her status as a parent or guardian to obtain a vendor contract with the School for compensation. It also prohibits an individual from utilizing his or her status as a parent or guardian to refer or encourage any students enrolled in the School, or their parents or guardians, to select that individual or his or her company or another provider of services, in connection with the student's education at the School, resulting in the individual's receipt of funds or thing of value from the School.

##### Procedures

The prior approval of the Executive Director or his or her designee must be obtained for any of the following in order to ensure that it does not conflict with this policy:

1. Any funds or thing of value provided to a student, parent or guardian which has not previously been approved. This applies in any situation in which a student, parent or guardian would any funds or thing of value, whether in their capacity as a student, parent, guardian, vendor, service provider or other circumstance.
2. Any proposed incentive to be offered to students or parents.

In requesting approval, the educational purpose of any such funds, thing of value or incentive must be provided to the Executive Director or his or her designee.



## SECTION 11 – SAFETY

### SUBSTANCE AND ALCOHOL POLICY

It is the intent of the School to promote a safe, healthy and productive work environment for all employees. The School recognizes that the illegal and/or excessive use of drugs and/or alcohol is not conducive to safe working conditions, employees' health, efficient operations, or School success. For purposes of this policy, "illegal drugs" includes, but is not limited to, substances that are prohibited by law (such as cocaine, heroin, etc.), controlled substances, marijuana (including medicinal marijuana and marijuana vaping or other recreational marijuana use), and prescription drugs (if they are not prescribed for the person using them and/or not being used as prescribed). "Drug paraphernalia" means any accessory for the use, possession, manufacture, distribution, dispensation, purchase, or sale of illegal drugs. "Under the influence" means that the employee is affected by alcohol, prescription medication that impairs cognitive or physical functions, and/or illegal drugs in any detectable manner.

The School complies with all Federal and State regulations regarding drug use while on the job. This policy prohibits the following:

- Use, possession, purchase, or offer for sale of illegal drugs, drug paraphernalia, or alcohol during working hours, including meal and break periods, or in the presence of pupils;
- Use, possession, purchase, or offer for sale of illegal drugs, drug paraphernalia, or alcohol on School property at any time;
- Use, possession, purchase, or offer for sale of illegal drugs, drug paraphernalia, or alcohol while attending a School function or event;
- Storing alcohol (if unauthorized), illegal drugs, or drug paraphernalia in a locker, desk, automobile, or other repository on the School's premises;
- Refusing to submit to an inspection or testing when requested by administration;
- Being under the influence of illegal drugs, prescription medication that impairs cognitive or physical functions and/or alcohol during working hours, while on the School's premises and/or attending a School function or event.

Employees taking physician-prescribed medications, which impairs the employee's job performance, (including medical prescribed marijuana) should not report to work. In addition, if you are required to take any kind of prescription or nonprescription medication that will affect your ability to perform your job, you are required to report this to Human Resources. Human Resources will determine if it is necessary to temporarily place you on another assignment or take other action as appropriate to protect your safety and the safety of other employees and students. Employees taking physician-prescribed medication which will not impair their job performance may be required to present a statement from the prescribing physician to the employee's supervisor indicating the duration of the prescription and stating that the use of the prescription will not impair the employee's ability to perform his or her specific job duties. This policy does not require or request the prescribing physician or the employee to identify any prescription drug or the medical condition for which it is prescribed. No employee shall use or have in his or her possession on the School premises any prescription medication other than medications currently prescribed by a physician for the employee. This policy will not be construed to prohibit the use of alcohol at social or business functions. However, employees must remember their obligation to conduct themselves appropriately at all times while at School-sponsored functions or while representing the School.

The School may at times conduct unannounced searches of School property for alcohol, illegal drugs, drug paraphernalia, and/or unauthorized controlled substances or to ensure compliance with any other School-related policy. As a result, employees do not have an expectation of privacy in this regard. Violation of this Substance and Alcohol Policy may result in disciplinary action, up to and including termination, at the School's sole discretion. Employees should be aware that participation in a rehabilitation program will not necessarily prevent the imposition of disciplinary action, including termination, for violation of this policy. Employees who undergo voluntary counseling or treatment and who continue to work, if any, must meet all established standards of conduct and job performance. Compliance with this Substance and Alcohol Policy is a condition of employment at the School. Failure or refusal of an employee to cooperate fully, sign any required document, submit to any inspection, or follow any prescribed course of substance abuse treatment will result in discipline, up to and including termination. Because the use, sale, purchase, possession, or furnishing of an illegally obtained substance is a violation of the law, the School may report such illegal drug activities to an appropriate law enforcement agency.

The School may require a test by intoxicator, blood test, urinalysis, medical examination of those persons whom the School reasonably suspects of using, possessing, or being under the influence of a drug or alcohol or is acting in such manner that they may harm themselves or another employee.

Any refusal to submit to such testing will be considered a positive screen. An employee's consent to submit to such a test is required as a condition of employment, and an employee's refusal to consent may result in disciplinary action, including termination for a first refusal or any subsequent refusal. The School shall determine the manner in which such testing is conducted with the goal being to ensure that the test results are accurate.

Such a test may be required of employees involved in any work-related accident or unsafe practice where the safety of the employee or other employees was jeopardized. Periodic retesting may also be required following positive test results or after any violation of this policy or rehabilitation.

### SMOKING

All School buildings and facilities are non-smoking facilities. This includes nicotine and non-nicotine cigarettes including (herbal cigarettes) as well as e-cigarettes, vaping and/or pipes (both tobacco and marijuana products). Smoking is prohibited within 20 feet of a school building and within 25 feet of a school playground or event location.

### PARKED VEHICLES

Employees are responsible for their own parked vehicles and the personal possessions within while parked on School property. Be cautious: keep school property and/or personal possessions out of sight and lock your car. Insuring your vehicle and personal property against loss and damage is recommended for your protection.

### PERSONAL AUTOMOBILE

Employees who use their own automobiles for travel on authorized school business will be reimbursed for mileage at the rate established by the Internal Revenue Services and in accordance with the School's Reimbursement policies. Employees must have prior supervisory approval for the use of personal vehicles and must carry, at their own expense, the minimum insurance coverage for property damage and public liability.

### PERSONAL PROPERTY

The School cannot be responsible and will assume no liability for any loss or damage to employee personal property resulting from theft, fire, or any other cause on the School's premises, including the parking area, or away from school property while on school business employees are prohibited from using personal property for work-related purposes unless approved in advance by the Executive Director.

### SAFETY POLICY

The School is firmly committed to maintaining a safe and healthy working environment. All employees of the School are expected to be safety conscious on the job at all times. All unsafe conditions or hazards should be corrected immediately. Report all unsafe conditions or hazards to your supervisor or Executive Director immediately, even if you believe you have corrected the problem. If you suspect a concealed danger is present on School premises, or in a product, facility, piece of equipment, process, or business practice for which the School is responsible, bring it to the attention of your supervisor or Executive Director immediately. Supervisors should arrange for the correction of any unsafe condition or concealed danger immediately and immediately contact the Executive Director regarding the problem. All workplace injuries and illnesses must be immediately reported to your supervisor and Human Resources. The School has in place a written Injury and Illness Prevention Program as required by law. It is located in the main office for review.

### ERGONOMICS

The School has invested in providing a work environment that is safe for all employees. To lessen the risk of ergonomic hazards, the School will make necessary adjustments to an individual's workstation, educate employees on ergonomic safety, and modify processes when deemed necessary to ensure the well-being and safety of our employees. You should report any ergonomic concerns to your Executive Director.

### CHEMICAL EXPOSURE WARNING

Employees should be aware that work areas might contain chemicals known to the State of California to cause cancer or to cause birth defects or other reproductive harm. If you have any questions or concerns about possible chemical exposure in your work area, contact your Executive Director.

## SECTION 12 – TERMINATION

### **VOLUNTARY TERMINATION**

The School will consider an employee to have voluntarily terminated his or her employment if the employee does any of the following: (1) elects to resign from the School; (2) fails to return from an approved leave of absence on the date specified without notifying the school for the need for continued leave including failure to communicate with the School; or (3) fails to report for work without notice to the School for three consecutive work days. The School requests that employees provide at least two weeks written notice of a voluntary termination. All School property must be returned immediately upon terminating employment. The School retains the right to accept resignation immediately and pay the amount of straight time compensation an employee would have earned in lieu of further performance.

### **INVOLUNTARY TERMINATION**

An employee may be terminated involuntarily for, among other reasons, poor performance, misconduct or other violations of the School's Rules of Conduct as set forth herein. Notwithstanding the foregoing, or anything else contained in this handbook, the School reserves the right to terminate any employee at any time, with or without advance notice and with or without cause.

### **EXIT INTERVIEWS**

All employees who leave employment at the School may be asked to take part in an exit interview with their supervisor to communicate their challenges and growth while employed at the School. Information shared during an exit interview will be treated as confidential to the extent possible.

### **VERIFICATION AND REFERENCE POLICY**

All requests for employment verification, references or personal information verification or disclosures must be directed to Human Resources. Only Human Resources is authorized to provide verifications or references, or disclose personal information, pertaining to current or former employees. With respect to verification requests, the School will disclose only the dates of employment and the title of the last position held. The School will verify or disclose additional information about the employee only if the employee provides written authorization for the School to provide the information. However, the School will provide information about current or former employees as required by law or court order. The School will not provide any letters of reference for current or former employees. Please refer all questions about this policy to Human Resources.

## EMPLOYEE HANDBOOK ACKNOWLEDGEMENT

By my signature below, I acknowledge that I have received a copy of the School Employee Handbook, on the date indicated below and agree to my at-will employment as described below. I acknowledge that it is my responsibility to read and review the Employee Handbook carefully. I also acknowledge that it is my responsibility to ask for clarification if I do not understand any of the policies included in the Employee Handbook.

I understand that the Employee Handbook contains important information regarding the School's expectations, policies and guidelines and that I am expected to comply with these expectations, policies and guidelines at all times. I understand that the Employee Handbook does not provide a binding contract, but provides guidelines for personnel concerning some of the School's policies.

In particular, I have read and understand the School's Anti-Nepotism Policy, Policy Regarding Inconsistent, Incompatible or Conflicting Employment, Activity or Enterprise by School Personnel, Policy Confirming Restrictions on the Provision of Funds or Other Things of Value to Students, Parents or Guardians, and restrictions and procedures to avoid Conflicts of Interest.

Just as I am free to terminate the employment relationship with the School at any time, the School, in its sole discretion, also reserves the right to modify or terminate the employment relationship with me at any time for any or no reason and with or without notice. Further, there is no agreement, express or implied, written or verbal, between the employee and the School for any specific period of employment, for continuing or long-term employment, or for guaranteed terms and conditions of employment. No one other than the Executive Director of the School, with the approval of the Board of Directors, has the authority to alter your employment at-will status, to enter into an agreement for employment for a specified period of time, or to make any agreement contrary to this policy. Further, any such agreement must be in writing and must be signed by the Executive Director. This is the entire agreement between the School and me regarding this subject. All prior or contemporaneous inconsistent agreements are superseded. If I have an individually negotiated written employment agreement with the School, then the terms and conditions of that agreement will prevail to the extent it differs from the policies in this Handbook.

The School reserves the right to modify, alter, add to or delete any of the policies, guidelines or benefits contained in this handbook at any time with or without notice. Other than the School Board of Directors, no other entity or person has the authority to modify this employee handbook.

Employee Name (print):

Employee Signature:

Date:

# Coversheet

## New Vendor Contract

**Section:** V. Academic Excellence  
**Item:** A. New Vendor Contract  
**Purpose:** Vote  
**Submitted by:**  
**Related Material:** Current Vendor Agreement with Proposed Change July 2021.pdf

**BACKGROUND:**

Proposed addition to current Vendor Agreement SECTION 8. BACKGROUND CHECK AND SAFETY REQUIREMENTS to be included after section f.

The proposed addition condenses the language and requirements of the previously approved Vendor Agreement Addendum for Outdoor In Person Services vendors were required to sign last year prior to providing outdoor in-person services to students and now includes it in the vendor agreement.

Other schools have adopted similar language to their vendor agreements as a matter of course to ensure that vendors are aware that California safety requirements, precautions, and guidelines regarding Covid19 should be followed.

**RECOMMENDATION:**

Recommended for Board approval.

This Vendor Agreement ("Agreement") is made between [ \_\_\_\_\_ **Charter School**] ("School"), a California nonprofit public corporation that operates a public charter school and \_\_\_\_\_ ("Vendor").

### **RECITALS**

WHEREAS, School fosters successful student achievement through a quality, personalized, and standards-based education program featuring unique and hands-on experiential learning experiences;

WHEREAS, Vendor is engaged in the businesses of providing experienced and qualified educational services as set forth in **Exhibit A**; and

WHEREAS, School desires to retain Vendor for the purpose of providing the services described herein for the benefit of the School, families, and students.

NOW, THEREFORE, in consideration of the foregoing recitals, the promises and the mutual covenants contained herein, and for other good, valuable and sufficient consideration, the parties agree as follows:

### **SECTION 1. TERM and TERMINATION.**

- a. Term: This Agreement shall be effective as of **[INSERT DATE]**
- b. Termination: Vendor may terminate this Agreement for cause after providing sixty (60) days advance written notice to School. School may terminate this Agreement at any time, with or without cause in its sole discretion with same-day written notice. Upon termination, School shall pay Vendor for all necessary and approved Services rendered pursuant to this Agreement and relevant "Enrichment Certificate(s)" (defined below) up to the effective date of termination. School has no obligation to pay Vendor for any Services provided after the effective date of termination. The termination of this Agreement constitutes a termination of any active invoices and Enrichment Certificates.

### **SECTION 2. SERVICES.**

- a. Scope of Services: Vendor is hereby engaged by School to perform the student enrichment services specified in **Exhibit A**, incorporated herein by reference ("Services"), subject to the terms and conditions contained herein. Vendor assumes full responsibility for the performance of the Services provided under the terms of this Agreement. School does not guarantee any minimum amount of work by this Agreement.
- b. No Authority to Bind School: Vendor understands and agrees that Vendor lacks the authority to bind School contractually, conduct business on School's behalf, or incur any obligations on behalf of School. Specifically, Vendor agrees not to represent himself/herself or any Vendor employees, agents, or contractors as an



employee of School in any capacity, including, but not limited to, when interacting with School students, parents, vendors, or employees.

- c. Responsibility for Performance: Vendor assumes full responsibility for the performance of Vendor's duties under the terms of this Agreement and warrants that Vendor and its employees, contractors, and other agents are fully qualified in Vendor's specialized skill or expertise to perform such duties. Vendor will not enter into any contract or engagement that conflicts or interferes with Vendor's duties under this Agreement.
- d. Compliance with Charter Petition and Law: Except when otherwise expressly required by applicable law, School shall not be responsible for monitoring Vendor's compliance with the law, charter petition, and Agreement. Vendor acknowledges that School must comply with Education Code § 220's prohibitions against discrimination, obligations to provide a free appropriate education to students with exceptional needs pursuant to the Individuals with Disabilities Education Act ("IDEA") and Section 504 of the Rehabilitation Act, and be non-sectarian in its programs. Vendor must be non-sectarian in any Services provided to School students. Vendor shall ensure its performance of its Services complies with these legal and charter petition requirements. If Vendor performs any Services in a manner that is contrary to law, Vendor shall bear all claims, costs, losses and damages (including, but not limited to, reasonable attorneys' fees and costs) arising therefrom.
- e. Service Limitations: Vendor shall not serve a School student for more than twelve (12) core academic hours including math, language arts, social studies, science and world language during the school week (Monday to Friday from 8:00 am to 2:30 pm) under this Agreement or any other arrangement (e.g., Student participation in a Vendor program outside of School activities); excepting visual and performing arts, CTE pathways, robotics, and physical activities including dance, gymnastics, karate, and other similar activities, as approved by the supervising teacher.
- f. No Private School Affiliation: Vendor certifies that it is not, nor is it affiliated with, a private school that submitted an affidavit to register with the California Department of Education and is listed on the state's Private School Directory ("Private School"). Vendor affirms the Services shall not be provided at a Private School. Vendor affirms that it will not confer any compensation received for performing Services under this Agreement to a Private School.
- g. Prohibited Conflicts: Vendor is prohibited from providing Services under this Agreement to a relative (e.g., child, grandchild, niece/nephew, sibling, etc.) of the Vendor (or its employees). School shall not be responsible for paying Vendor for the prohibited services described herein.

### **SECTION 3. PAYMENT.**

- a. Enrichment Certificate: School requests Services from Vendor through School's issuance of an Enrichment Certificate. School is not responsible to pay for any costs of Services without issuance of an Enrichment Certificate. The Enrichment Certificate will detail requested Services, dates of Services, fees for Services, and other relevant information. Vendors must first receive an Enrichment Certificate before providing Services to students. School does not pay for Services in advance. If an Enrichment Certificate expires, Vendor must cease providing Services until it receives another Enrichment Certificate.
- b. Vendor Invoice: School shall pay Vendor for Services performed through invoices. Vendor will remit one (1) itemized invoice after completing the Services pursuant to an Enrichment Certificate. Vendors should submit invoices to **[INSERT CONTACT INFORMATION]**. School will endeavor to pay undisputed invoice amounts within thirty (30) days of receipt.
- c. Termination of Enrichment Certificate: School may terminate an Enrichment Certificate at any time, with or without cause in its sole discretion with same-day written notice. School shall pay Vendor the undisputed amounts for Services already performed under the Enrichment Certificate.
- d. Incurred Costs: Any damages or costs incurred by School, including replacement costs, as a result of Vendor's failure to competently perform under this Agreement may be deducted by School from any amounts owed to Vendor.
- e. Use of School's Name: Vendor shall not use the name, insignia, mark, or any facsimile of the School for any purpose, including but not limited to advertising, client lists, or references, without the advance written authorization of the School.

#### **SECTION 4. GENERAL CONDITIONS FOR VENDOR PERFORMANCE.**

- a. Vendor Qualifications: Vendor represents it has the qualifications, skills and, if applicable, the certification and licenses necessary to perform the Services in a competent, and professional manner, without the advice or direction of School. Upon School's request, Vendor shall provide copies of certification or licensure. Subject to the terms of this Agreement, Vendor shall render all Services hereunder in accordance with this Agreement and **Exhibit A**, Vendor's independent and professional judgment and in compliance with all applicable laws and with the generally accepted practices and principles of Vendor's trade. Vendor is customarily engaged in the independently established trade, occupation, or business of the same nature as the Services performed.
- b. Relationship: The School is not an employer of Vendor or its employees, contractors, or agents and shall not supervise individuals as such in carrying out the Services to be performed by Vendor under the terms of this Agreement. It is expressly understood between the parties that Vendor and its employees, contractors, and agents are not employee(s) of School.

- c. Licenses: Vendor warrants that Vendor is engaged in an independent and bona fide business operation, markets him/her/itself as such, is in possession of a valid business license/insurance when required, and is providing or capable of providing similar services as set forth in **Exhibit A** to others.
- d. No Training or Instruction: Although School may at times provide information concerning its business and students to Vendor, School will not provide any training or instruction to Vendor concerning the manner and means of providing the Services that are subject to this Agreement because Vendor warrants that Vendor is highly skilled in its industry.

**SECTION 5. TAXES.** Because Vendor is not an employee of School, all compensation called for under this Agreement shall be paid without deductions or withholdings, and will be accompanied by an IRS Form 1099, as applicable, at year end. Vendor is responsible for the reporting and payment of any state and/or federal income tax or other withholdings on the compensation provided under this Agreement or any related assessments. In addition, Vendor shall fill out and execute a Form W-9. In the event that the Internal Revenue Service or the State of California should determine that Vendor or its employee(s) is/are an employee of School subject to withholding and social security contributions, Vendor acknowledges consistent with this Agreement that all payments due to Vendor under this Agreement are gross payments, and the Vendor is solely responsible for all income taxes, social security payments, or other applicable deductions thereon.

**SECTION 6. BENEFITS.** Vendor and its employees, contractors, and agents are not entitled to the rights or benefits that may be afforded to School employees including, but not limited to, disability, workers' compensation, unemployment benefits, sick leave, vacation leave, medical insurance and retirement benefits. Vendor is solely responsible for providing at Vendor's own expense, disability, unemployment, workers' compensation and other insurance for Vendor and any of its employees, contractors, and agents.

**SECTION 7. MATERIALS.** Vendor will furnish at its own expense all materials, equipment and supplies used to provide the Services.

### **SECTION 8. BACKGROUND CHECK AND SAFETY REQUIREMENTS.**

- a. Background Check: Vendor shall ensure its employees, agents, and contractors working directly with School students complete a criminal background check through the Department of Justice ("DOJ") in accordance with Education Code section 45125.1. Vendor certifies to School that no one working on behalf of Vendor (e.g., Vendor employees, agents, or contractors) working with School students have been convicted or have pending charges of a violent or serious felony as defined in Penal Code sections 667.5(c) and 1192.7(c). The cost of the background check is the Vendor's responsibility.
- b. First Aid & CPR Certification: Upon School's request, Vendor shall ensure its employees, agents, or contractors obtain First-Aid and CPR Certification.

Vendors shall implement safety policies and procedures related to emergency response and accident reporting reasonable for the Services.

- c. Supervision: Vendor is responsible for supervising and ensuring students have a safe environment from the time they are dropped off to receive Services and until the responsible party picks them up. Students may not be left unattended during Vendor's provision of Services. Students shall not interact in one-on-one settings with Vendor (or its employees) without the School's express written permission. Vendor may not transport students without School's express written permission.
- d. Student Discipline: Vendor acknowledges that School is responsible for managing and overseeing the education program, which incorporates the Vendor's enrichment services. Vendor must immediately notify School when students act inappropriately and may require discipline. School is responsible for issuing discipline to students. If Vendor wishes to remove a participant from their Services, the Vendor shall notify School and the parties will discuss appropriate measures.
- e. Reporting Bullying and Harassment Incidents to School: To the fullest extent allowed by law, Vendor shall immediately notify School if it becomes aware of any incident of bullying, discrimination, harassment, or sexual harassment at Vendor's place of business, during Vendor's provision of Services, or otherwise involving School students, Vendor, or Vendor's employees, contractors, or agents in any way. If Vendor learns a student may pose a health or safety threat to himself/herself or to other individuals, Vendor must immediately notify the School.
- f. Training: Vendor shall ensure its employees, contractors, or agents who interact with School students participate in sexual harassment prevention training before providing Services under this Agreement. Upon School's request, Vendor shall provide proof of compliance with this training requirement.
- g. COVID-19: Vendor shall acknowledge and certify they will abide by all county, state, and federal guidelines concerning COVID-19 and its prevention. Additionally, Vendor shall implement and visibly post the **5 Strategies That Reduce The Spread of COVID - 19** at the facility or location where services will be provided. Vendor will ensure that employees practice good hygiene and respiratory etiquette and provide adequate supplies (includes soap, water, hand sanitizer, paper towels, disinfectant wipes and sprays,etc..) when possible.

## **SECTION 9. INDEMNIFICATION AND INSURANCE.**

- a. Indemnification: To the maximum extent allowable by law, Vendor will indemnify, defend, and hold harmless School, its officers, directors, employees, agents and volunteers from and against all claims, demands, losses, costs, expenses, obligations, liabilities, damages, recoveries, and deficiencies, including interest, penalties, attorneys' fees, and costs that such

entities or persons may incur that arise out of or relate to this Agreement or the alleged negligence, recklessness or willful misconduct of Vendor, including of Vendor's officers, directors, employees, subcontractors, agents, representatives, volunteers, successors, assigns or anyone for whom Vendor is legally responsible. Vendor's indemnity, defense and hold harmless obligations shall survive the termination of this Agreement. To the maximum extent allowable by law, Vendor also agrees to hold harmless, indemnify, and defend School from any and all liability, damages, or losses (including reasonable attorneys' fees, costs, penalties, and fines) School suffers as a result of (a) Vendor's failure to meet its obligations under Sections 4-6, or (b) a third party's designation of Vendor or Vendor's employees, agents, or contractors as an employee of School regardless of any actual or alleged negligence by School.

- b. General Liability Insurance Limits: Vendor agrees to maintain general liability insurance coverage, including both bodily injury and property damage, with at least the following coverage limits:
  - i. \$1,000,000 per occurrence
  - ii. \$2,000,000 general aggregate
  - iii. \$500,000 personal & advertising injury
- c. Additional Insurance Requirements: Vendor's insurance shall constitute primary coverage for any loss or liability arising from or relating to this Agreement and any insurance held by School shall constitute secondary, excess coverage. School may require additional insurance coverage depending on the Services and shall communicate these insurance requirements to the Vendor in conjunction with the provision of an Enrichment Certificate. Vendor's insurance policies required under this Agreement shall name School as additionally insured.

## **SECTION 10. CONFIDENTIALITY.**

- a. Confidential Information: Vendor acknowledges that during the course of performing Services, Vendor may become privy to confidential, privileged and/or proprietary information important to the School. Vendor further acknowledges its obligations under the Family Educational Rights and Privacy Act ("FERPA") and California Uniform Trade Secrets Act. Vendor shall ensure that all of its employees, agents and contractors agree to the requirements of this section prior to receiving any Confidential Information (defined below). Vendor shall not use or disclose during or after the term of this Agreement, without the prior written consent of School, any information relating to School's employees, directors, agents, students or families, or any information regarding the affairs or operations of School, including School's confidential/proprietary information and trade secrets ("Confidential Information"). Confidential Information, whether prepared by or for the School, includes, without limitation, all of the following: education records, student rosters, medical records, personnel records, information technology systems, financial and accounting information,



business or marketing plans or strategies, methods of doing business, curriculum, lists, email addresses and other information concerning actual and potential students or vendors and/or any other information Vendor reasonably should know is treated as confidential by the School. The only allowed disclosures of Confidential Information are (i) with prior written consent of School; (ii) after the information is generally available to the public other than by reason of a breach by Vendor of this agreement to maintain confidentiality; (iii) after the information has been acquired by Vendor through independent means and without a breach of Vendor's duties to School under this Agreement or otherwise; or (iv) pursuant to the order of a court or other tribunal with jurisdiction if Vendor has given School adequate notice so that School may contest any such process. Personally identifiable student information may only be used as necessary to meet Vendor's obligations under this Agreement. Vendor shall not use any Confidential Information (e.g., student or parent contact information) to market any products or services to School parents or students without School's express written permission. Vendor must take all necessary and appropriate steps to protect and safeguard all of School's Confidential Information and proprietary information from unauthorized disclosure.

- b. Disclosure of Records: School will provide Vendor with those records requested by Vendor that are reasonably necessary to allow Vendor to perform the Services. Vendor shall use any such records only for the purpose provided and not for the benefit of any other person or entity. Upon termination of this Agreement or School's request, Vendor will immediately surrender to School or destroy all Confidential Information and other materials provided to Vendor by School, including all physical copies, drafts, digital or computer versions.

**SECTION 11. ENTIRE AGREEMENT.** This Agreement and its incorporated exhibits constitute the entire agreement between the parties with respect to the subject matter contained herein and supersede all agreements, representations and understandings of the parties with respect to such subject matter made or entered into prior to the date of this Agreement.

## **SECTION 12. DISPUTE RESOLUTION.**

- a. Informal Dispute Resolution: If there is any dispute or controversy between the parties arising out of or relating to this Agreement, the parties shall first meet and confer informally in an attempt to resolve the issue.
- b. Mediation: If reasonable efforts at informal resolution are unsuccessful, the parties shall participate in a mediation with a mutually-agreed upon mediator. Any costs and fees, other than attorneys' fees, associated the mediation shall be shared equally by the parties.
- c. Arbitration: If School has paid more than \$25,000 to Vendor for Services since the start of the previous fiscal year, and efforts to resolve the dispute at mediation are unsuccessful, the parties agree that such dispute will be

submitted to private and confidential arbitration by a single neutral arbitrator through Judicial Arbitration and Mediation Services, Inc. ("JAMS") at the nearest JAMS location, or other service agreed upon by both parties, and that such arbitration will be the exclusive final dispute resolution method under this Agreement. The JAMS Streamlined Arbitration Rules & Procedures in effect at the time the claim or dispute is arbitrated will govern the procedure for the arbitration proceedings between the parties. The arbitrator shall not have the power to modify any of the provisions of this Agreement. The decision of the arbitrator shall be final, conclusive and binding upon the parties hereto, and shall be enforceable in any court of competent jurisdiction. The party initiating the arbitration shall advance the arbitrator's initial fee. Otherwise and thereafter, each party shall bear their own costs of the arbitration proceeding or litigation to enforce this Agreement, including attorneys' fees and costs. Except where clearly prevented by the area in dispute, both parties agree to continue performing their respective obligations under this Agreement until the dispute is resolved, subject to the right to terminate this Agreement. Nothing in this Agreement is intended to prevent either party from obtaining injunctive or equitable relief in court to prevent irreparable harm pending the conclusion of any such arbitration.

**SECTION 13. MODIFYING THE AGREEMENT.** No supplement, modification, or amendment of this Agreement shall be binding unless in writing and executed by both parties.

**SECTION 14. NO WAIVER.** No waiver of any provision of this Agreement shall constitute, or be deemed to constitute, a waiver of any other provision, nor shall any waiver constitute a continuing waiver. No waiver shall be binding unless executed in writing by the party making the waiver.

**SECTION 15. NO ASSIGNMENT.** No party shall assign this Agreement, any interest in this Agreement, or its rights or obligations under this Agreement without the express prior written consent of the other party. This Agreement shall be binding on, and shall inure to the benefit of, the parties and their respective permitted successors and assigns.

**SECTION 16. SEVERABILITY.** If any provision of this Agreement is invalid or contravenes applicable law, such provision shall be deemed not to be a part of this Agreement and shall not affect the validity or enforceability of its remaining provisions, unless such invalidity or unenforceability would defeat an essential business purpose of this Agreement.

**SECTION 17. GOVERNING LAW.** This Agreement shall be governed by and interpreted under the laws of the State of California.

**SECTION 18. AUTHORITY TO CONTRACT.** Each party warrants to the other that it has the authority to enter into this Agreement, that it is a binding and

enforceable obligation of said party, and that the undersigned has been duly authorized to execute this Agreement.

**SECTION 19. NOTICES.** All notices and other communications in connection with this Agreement shall be in writing and shall be considered given as follows:

(a) When delivered personally to the recipient’s address as stated on this Agreement; (b) three days after being deposited in the United States mail, with postage prepaid to the recipient's address as stated on this Agreement; (c) via email address as stated on this Agreement.

Notice is effective upon receipt provided that a duplicate copy of the notice is promptly given by first class mail, or the recipient delivers a written confirmation of receipt.

**If to Vendor:**

**If to School:**

*(Please fill in with your information)*

Business: \_\_\_\_\_

[INSERT CONTACT]

Name: \_\_\_\_\_

Vendor Administrator

Title: \_\_\_\_\_

[INSERT ADDRESS]

Address: \_\_\_\_\_

\_\_\_\_\_

[INSERT EMAIL ADDRESS]

Email: \_\_\_\_\_

[INSERT PHONE NUMBER]

Phone: \_\_\_\_\_

**SECTION 20. COUNTERPARTS.** This Agreement may be executed in two or more counterparts, each of which shall be deemed an original and all of which together shall constitute one instrument. A faxed or emailed .pdf or other electronic copy of the fully executed original version of this Agreement shall have the same legal effect as an executed original for all purposes.

IN WITNESS WHEREOF, the parties have executed this Agreement as of the Effective Date above.

[ \_\_\_\_\_ Charter School]

By: \_\_\_\_\_

Name: \_\_\_\_\_

Title: \_\_\_\_\_

Date: \_\_\_\_\_

**VENDOR**

By: \_\_\_\_\_

Name: \_\_\_\_\_

Title: \_\_\_\_\_

Date: \_\_\_\_\_

**EXHIBIT A  
Detailed List of Vendor Services and Prices**

\*Anything not listed will not be approved

**Services Offered:**

\_\_\_\_\_

\_\_\_\_\_

\_\_\_\_\_

\_\_\_\_\_

**Grade Level and Price:**

**\$ \_\_\_\_\_ Per \_\_\_\_\_**

TK - K	
Grade 1-5	
Grade 6-8	
Grade 9-12	

\_\_\_\_\_

\_\_\_\_\_

\_\_\_\_\_

\_\_\_\_\_

**\$ \_\_\_\_\_ Per \_\_\_\_\_**

TK - K	
Grade 1-5	
Grade 6-8	
Grade 9-12	

\_\_\_\_\_

\_\_\_\_\_

\_\_\_\_\_

\_\_\_\_\_

**\$ \_\_\_\_\_ Per \_\_\_\_\_**

TK - K	
Grade 1-5	
Grade 6-8	
Grade 9-12	

**Cancellation & Refund Policy**

**Services that are not rendered are subject to a full refund. Refunds must be credited back to the school.**

**Name of Owner/Director:** \_\_\_\_\_

**Signature:** \_\_\_\_\_ **Date:** \_\_\_\_\_