



Clarksville Charter School

Regular Scheduled Board Meeting

Date and Time

Thursday March 25, 2021 at 6:30 PM PDT

Zoom Link: <https://zoom.us/j/99211506364>

Meeting ID: 992 1150 6364

Join by Phone: (669) 900-6833

The mission of Clarksville Charter School is to develop the individual gifts of students in El Dorado County and adjacent counties to become critical thinkers, responsible citizens and innovative leaders prepared for academic and real-life achievement in the 21st Century. The mission will be accomplished through quality, personalized, standards-based education which could include online coursework, offline textbook work, project-based learning, and unique hands-on and experiential learning experiences facilitated in partnership with students, parents, staff, and community.

Agenda

- I. Opening Items**
 - A.** Record Attendance
 - B.** Call the Meeting to Order
 - C.** Approval of the Agenda (p. 1-3)

D. Public Comments

E. Approve Minutes (p. 4-11)

F. Approve Minutes (p. 12-16)

Special Board Meeting

G. Closed Session

Conference with Legal Counsel - Anticipated Litigation: Significant exposure to litigation pursuant to paragraph (2) or (3) of subdivision (d) of Section 54956.9 (one case)

H. Announcement of Any Action Take in Closed Session

I. Executive Director's Report (p. 17-32)

II. Finance

A. February Financials (p. 33-55)

B. Budget Considerations (p. 56-58)

C. Budget Meeting - Report Out

D. Growth Projections 2021-2022 (p. 59-60)

E. Discussion and Potential Action on the 2019-2020 Audit Report (p. 61)

III. Academic Excellence

A. Local Control and Accountability Plan (LCAP) & Timeline (p. 62-74)

Darcy Belleza presents 2021-2024 Local Control and Accountability Plan and Timeline.

IV. Operations

A. School Pathways Bids (p. 75-77)

V. Closing Items

A. Board of Director's Comments & Requests

B. Announcement of Next Regular Scheduled Board Meeting

April 29, 2021 at 7:00 p.m.

C. Adjourn Meeting

Public Comment Rules: Members of the public may address the Board on agenda or non-agenda items through the teleconference platform, Zoom. Zoom does not require the members of the public to have an account or login. Please either utilize the chat option to communicate to the administrative team of your desire to address the Board or simply communicate orally your desire to address the Board when the Board asks for public comments. Speakers may be called in the order requests are received. Comments are limited to 2 minutes each, with no more than 15 minutes per single topic. If a member of the public utilizes a translator to address the Board, those individuals are allotted 4 minutes each. If the Board utilizes simultaneous translation equipment in a manner that allows the Board to hear the translated public testimony simultaneously, those individuals are allotted 2 minutes each. By law, the Board is allowed to take action only on items on the agenda. The Board may, at its discretion, refer a matter to school staff or calendar the issue for future discussion.

Note: The Governing Board encourages those with disabilities to participate fully in the public meeting process. If you need a disability-related modification or accommodation, including auxiliary aids or services, to participate in the public meeting, please contact the Governing Board Office at (562) 584-0427 at least 48 hours before the scheduled board meeting so every reasonable effort can be made to accommodate you. (Government Code § 54954.2; Americans with Disabilities Act of 1990, § 202 (42 U.S.C. § 12132)).

Coversheet

Approve Minutes (p. 4-11)

Section: I. Opening Items
Item: E. Approve Minutes (p. 4-11)
Purpose: Approve Minutes
Submitted by:
Related Material: Minutes for Regular Scheduled Board Meeting on February 25, 2021

APPROVED



Clarksville Charter School

Minutes

Regular Scheduled Board Meeting

Date and Time

Thursday February 25, 2021 at 7:00 PM

Zoom Link: <https://zoom.us/j/99211506364>

Meeting ID: 992 1150 6364
Join by Phone: (669) 900-6833

Directors Present

Emily Allen (remote), Kathleen Burwell-Callero (remote), Kelley Laliberte (remote), Keri Dalebout (remote), Lisa Jobe (remote)

Directors Absent

None

Guests Present

Darlington Ahaiwe (remote), Jenell Sherman (remote), Kathy Fagundo (remote)

I. Opening Items

A. Record Attendance

B. Call the Meeting to Order

Emily Allen called a meeting of the board of directors of Clarksville Charter School to order on Thursday Feb 25, 2021 at 7:04 PM.

C. Approval of the Agenda (p. 1-3)

Emily Allen made a motion to approve the agenda.

Lisa Jobe seconded the motion.

The board **VOTED** to approve the motion.

Roll Call

Lisa Jobe	Aye
Emily Allen	Aye
Keri Dalebout	Aye
Kathleen Burwell-Callero	Aye
Kelley Laliberte	Aye

D. Public Comments

Tammi Lasater made a public comment regarding being a Cottonwood family with a Clarksville teacher. Tammi wanted to know if the school had community connections and a lending library.

E. Executive Director's Report (p. 4-14)

Jenell Sherman presented the Executive Director's Report.

F. Approve Minutes (p. 15-21)

Emily Allen made a motion to approve the minutes from Regular Scheduled Board Meeting on 01-28-21.

Keri Dalebout seconded the motion.

The board **VOTED** to approve the motion.

Roll Call

Kathleen Burwell-Callero	Aye
Kelley Laliberte	Aye
Emily Allen	Aye
Lisa Jobe	Aye
Keri Dalebout	Aye

II. Finance

A. January Financials & 2nd Interim Report (p. 22-48)

Lisa Jobe made a motion to approve the January Financials & 2nd Interim Report as presented by Darlington Ahaiwe.

Keri Dalebout seconded the motion.

The board discussed the financials, budget, and had a discussion regarding instructional funds allocation.

The board **VOTED** to approve the motion.

Roll Call

Lisa Jobe	Aye
Kelley Laliberte	Aye
Keri Dalebout	Aye
Emily Allen	Aye
Kathleen Burwell-Callero	Aye

B. Budget Considerations for 2021-2022 School Year (p. 49-60)

Darlington Ahaiwe presented budget considerations for 2021-2022 school year.

C. 2021-2022 Staff Contracts (p. 61-103)

Kathleen Burwell-Callero made a motion to approve the 2021-2022 Staff Contracts.

Keri Dalebout seconded the motion.

The board **VOTED** to approve the motion.

Roll Call

Kelley Laliberte	Aye
Emily Allen	Aye
Kathleen Burwell-Callero	Aye
Lisa Jobe	Aye
Keri Dalebout	Aye

D. 2021-2022 Compensation Policy (p.104-112)

Keri Dalebout made a motion to approve the 2021-2022 Compensation Policy.

Kathleen Burwell-Callero seconded the motion.

Lisa Jobe noted that she would abstain solely because she wanted to review the percentage of increase before approving.

The board **VOTED** to approve the motion.

Roll Call

Keri Dalebout	Aye
Lisa Jobe	Abstain
Kathleen Burwell-Callero	Aye
Emily Allen	Aye
Kelley Laliberte	Aye

III. Academic Excellence

A. Title IX Sexual Harassment Policy & Grievance Procedures (p. 113-125)

Lisa Jobe made a motion to approve the Title IX Sexual Harassment Policy & Grievance Procedures.

Kathleen Burwell-Callero seconded the motion.

The board **VOTED** to approve the motion.

Roll Call

Lisa Jobe	Aye
Kathleen Burwell-Callero	Aye
Kelley Laliberte	Aye
Keri Dalebout	Aye
Emily Allen	Aye

B. Transgender & Gender Nonconforming Students Policy (126-132)

Kathleen Burwell-Callero made a motion to approve the Transgender & Gender Nonconforming Students Policy.

Keri Dalebout seconded the motion.

The board **VOTED** to approve the motion.

Roll Call

Kathleen Burwell-Callero	Aye
Kelley Laliberte	Aye
Keri Dalebout	Aye
Emily Allen	Aye
Lisa Jobe	Aye

C. Anti-Harassment / Discrimination / Intimidation / Bullying / Retaliation Policy (p. 133-139)

Lisa Jobe made a motion to approve the Anti-Harassment / Discrimination / Intimidation / Bullying / Retaliation Policy.

Keri Dalebout seconded the motion.

The board **VOTED** to approve the motion.

Roll Call

Keri Dalebout	Aye
Kelley Laliberte	Aye
Emily Allen	Aye
Kathleen Burwell-Callero	Aye
Lisa Jobe	Aye

IV. Operations

A. Notice of Non-Discrimination (p. 140-142)

Kathleen Burwell-Callero made a motion to approve the Notice of Non-Discrimination.

Lisa Jobe seconded the motion.

The board **VOTED** to approve the motion.

Roll Call

Lisa Jobe	Aye
Keri Dalebout	Aye
Kathleen Burwell-Callero	Aye

Roll Call

Emily Allen Aye
Kelley Laliberte Aye

B. Comprehensive Safety Plan 2021-2022 (p. 143-246)

Lisa Jobe made a motion to approve the Comprehensive Safety Plan 2021-2022.
Keri Dalebout seconded the motion.
The board **VOTED** to approve the motion.

Roll Call

Keri Dalebout Aye
Lisa Jobe Aye
Emily Allen Aye
Kelley Laliberte Aye
Kathleen Burwell-Callero Aye

C. 2021-2022 Enrollment Dates (p. 247-248)

Keri Dalebout made a motion to approve the 2021-2022 Enrollment Dates of March 22 - April 9.
Lisa Jobe seconded the motion.
The board **VOTED** to approve the motion.

Roll Call

Emily Allen Aye
Kathleen Burwell-Callero Aye
Keri Dalebout Aye
Lisa Jobe Aye
Kelley Laliberte Aye

D. Auditor Selection (p. 249-291)

Kathleen Burwell-Callero made a motion to approve the contract with Wilkinson for audit services.
Keri Dalebout seconded the motion.
The board **VOTED** to approve the motion.

Roll Call

Kelley Laliberte Aye
Kathleen Burwell-Callero Aye
Keri Dalebout Aye
Emily Allen Aye
Lisa Jobe Aye

E. Board Resolution - Withdraw Relationship From ThinkSuite (p. 292-293)

Lisa Jobe made a motion to approve the board resolution - Withdraw Relationship From ThinkSuite.

Keri Dalebout seconded the motion.
The board **VOTED** to approve the motion.

Roll Call

Emily Allen Aye
Kathleen Burwell-Callero Aye
Keri Dalebout Aye
Lisa Jobe Aye
Kelley Laliberte Aye

F. Board Resolution - Withdraw Membership From CharterSAFE Joint Powers Authority (p. 294-295)

Lisa Jobe made a motion to approve the board resolution - Withdraw Membership From CharterSAFE Joint Powers Authority.
Kelley Laliberte seconded the motion.
The board **VOTED** to approve the motion.

Roll Call

Lisa Jobe Aye
Kelley Laliberte Aye
Emily Allen Aye
Keri Dalebout Aye
Kathleen Burwell-Callero Aye

G. CSO Board Member Nomination (p. 296-298)

Kathleen Burwell-Callero made a motion to approve Robert McGuire to serve on the CSO Board to represent Clarksville Charter School.
Lisa Jobe seconded the motion.
The board **VOTED** to approve the motion.

Roll Call

Kathleen Burwell-Callero Aye
Lisa Jobe Aye
Kelley Laliberte Aye
Emily Allen Aye
Keri Dalebout Aye

V. Governance

A. Board Self Evaluation (p. 299-317)

Kathleen Burwell-Callero made a motion to approve the Board Self Evaluation.
Lisa Jobe seconded the motion.
Emily Allen explained that items from the CSDC self evaluation are included in the Clarksville self evaluation. Each board member would complete the form individually and then the board will discuss at a board meeting. The Board discussed setting yearly goals for the Board improvement.

The board **VOTED** to approve the motion.

Roll Call

Keri Dalebout	Aye
Emily Allen	Aye
Kelley Laliberte	Aye
Lisa Jobe	Aye
Kathleen Burwell-Callero	Aye

B. Board Adhoc Committee: Budget and Finance (p. 318-324)

Lisa Jobe made a motion to create a working group to have The Board involved in the budgeting process with Emily Allen as the representative.

Keri Dalebout seconded the motion.

The board **VOTED** to approve the motion.

Roll Call

Lisa Jobe	Aye
Kelley Laliberte	Aye
Kathleen Burwell-Callero	Aye
Emily Allen	Aye
Keri Dalebout	Aye

VI. Closing Items

A. Board of Director's Comments & Requests

Emily Allen asked if the board would like to adjust the meeting time. Lisa Jobe mentioned starting at 6:30pm might be better.

Lisa Jobe mentioned that it would be best for families to know funds information prior to open enrollment.

Keri Dalebout inquired about the WASC committee stating that the school mission statement might not be aligned.

Emily Allen inquired about when The Board will get Academy logins. Katie Royer is working to get that access.

Lisa Jobe inquired about when the next sign-up will be for JHVA & HSVA.

The Board discussed experiences with NHS & NJHS.

B. Announcement of Next Regular Scheduled Board Meeting

Next meeting is March 25, 2021 at 7:00 p.m

C.

Adjourn Meeting

Lisa Jobe made a motion to adjourn the meeting at 9:50pm.

Emily Allen seconded the motion.

The board **VOTED** to approve the motion.

Roll Call

Emily Allen Aye

Kelley Laliberte Aye

Kathleen Burwell-Callero Aye

Lisa Jobe Aye

Keri Dalebout Aye

There being no further business to be transacted, and upon motion duly made, seconded and approved, the meeting was adjourned at 9:50 PM.

Respectfully Submitted,
Emily Allen

Prepared By:
Kathy Fagundo

Noted By:

Board Secretary

Public Comment Rules: Members of the public may address the Board on agenda or non-agenda items through the teleconference platform, Zoom. Zoom does not require the members of the public to have an account or login. Please either utilize the chat option to communicate to the administrative team of your desire to address the Board or simply communicate orally your desire to address the Board when the Board asks for public comments. Speakers may be called in the order requests are received. Comments are limited to 2 minutes each, with no more than 15 minutes per single topic. If a member of the public utilizes a translator to address the Board, those individuals are allotted 4 minutes each. If the Board utilizes simultaneous translation equipment in a manner that allows the Board to hear the translated public testimony simultaneously, those individuals are allotted 2 minutes each. By law, the Board is allowed to take action only on items on the agenda. The Board may, at its discretion, refer a matter to school staff or calendar the issue for future discussion.

Note: The Governing Board encourages those with disabilities to participate fully in the public meeting process. If you need a disability-related modification or accommodation, including auxiliary aids or services, to participate in the public meeting, please contact the Governing Board Office at (562) 584-0427 at least 48 hours before the scheduled board meeting so every

reasonable effort can be made to accommodate you. (Government Code § 54954.2; Americans with Disabilities Act of 1990, § 202 (42 U.S.C. § 12132)).

Coversheet

Approve Minutes (p. 12-16)

Section: I. Opening Items
Item: F. Approve Minutes (p. 12-16)
Purpose: Approve Minutes
Submitted by:
Related Material: Minutes for Special Board Meeting on March 10, 2021

APPROVED



Clarksville Charter School

Minutes

Special Board Meeting

Date and Time

Wednesday March 10, 2021 at 5:00 PM

Zoom Link: <https://zoom.us/j/96568347400>

Meeting ID: 965 6834 7400

Join by Phone: (669) 900-6833

Clarksville Mission Statement

Clarksville Charter School provides a flexible personalized learning experience, empowering families to tailor a program designed around the specific needs of each student. In collaboration with highly qualified credentialed teachers, students engage in diverse and dynamic learning pathways and unparalleled enrichment opportunities to achieve personal and academic success.

Directors Present

Emily Allen (remote), Kathleen Burwell-Callero (remote), Kelley Laliberte (remote), Lisa Jobe (remote)

Directors Absent

Keri Dalebout

Guests Present

Jenell Sherman (remote), Kathy Fagundo (remote)

I. Opening Items

A. Record Attendance

B. Call the Meeting to Order

Emily Allen called a meeting of the board of directors of Clarksville Charter School to order on Wednesday Mar 10, 2021 at 5:02 PM.

C. Approval of the Agenda (p. 1-2)

Lisa Jobe made a motion to approve the agenda.
Kathleen Burwell-Callero seconded the motion.
The board **VOTED** to approve the motion.

Roll Call

Keri Dalebout	Absent
Kathleen Burwell-Callero	Aye
Kelley Laliberte	Aye
Emily Allen	Aye
Lisa Jobe	Aye

D. Public Comments

No public comments.

II. Operations

A. 2021-2022 Calendar

Lisa Jobe made a motion to approve the 2021-2022 Calendar with approval to correct typos that do not substantively change calendar.
Kelley Laliberte seconded the motion.
The board **VOTED** to approve the motion.

Roll Call

Lisa Jobe	Aye
Keri Dalebout	Absent
Kathleen Burwell-Callero	Aye
Kelley Laliberte	Aye
Emily Allen	Aye

B. 2021-2022 Open Enrollment Dates

Kathleen Burwell-Callero made a motion to approve the 2021-2022 Open Enrollment Dates of March 22 - April 30.
Lisa Jobe seconded the motion.
The board **VOTED** to approve the motion.

Roll Call

Kathleen Burwell-Callero	Aye
Keri Dalebout	Absent
Kelley Laliberte	Aye
Lisa Jobe	Aye
Emily Allen	Aye

III. Finance**A. 2021-2022 Compensation Policy**

Lisa Jobe made a motion to approve the 2021-2022 Compensation Policy.
Kathleen Burwell-Callero seconded the motion.
The board **VOTED** to approve the motion.

Roll Call

Kathleen Burwell-Callero	Aye
Emily Allen	Aye
Kelley Laliberte	Aye
Keri Dalebout	Absent
Lisa Jobe	Aye

B. Student Funding Charts

Lisa Jobe made a motion to approve the Student Funding Charts.
Kelley Laliberte seconded the motion.
The board **VOTED** to approve the motion.

Roll Call

Kelley Laliberte	Aye
Lisa Jobe	Aye
Kathleen Burwell-Callero	Aye
Emily Allen	Aye
Keri Dalebout	Absent

IV. Governance**A. Board Calendar**

Kathleen Burwell-Callero made a motion to approve the Board Calendar to change the start time of regular board meetings to 6:30PM.
Kelley Laliberte seconded the motion.
The board **VOTED** to approve the motion.

Roll Call

Kathleen Burwell-Callero	Aye
Emily Allen	Aye
Lisa Jobe	Aye

Roll Call

Keri Dalebout	Absent
Kelley Laliberte	Aye

B. Form 700

Jenell Sherman reminded the Board members that they need to complete their Form 700s by April 1, 2021.

V. Closing Items

A. Board of Director's Comments & Requests

Lisa Jobe mentioned that the Sequoia Grove website and video are beautiful. Bob will give an update at the next meeting.

Emily Allen informed the board that she attended the budget meeting and will report out at the next meeting.

Lisa Jobe asked Emily if any action was needed for the Board self-evaluation. Emily will work with Bryanna Brossman on a timeline. The Board should receive login information for CSDC training in their email.

B. Announcement of Next Regular Scheduled Board Meeting

Next meeting is March 25, 2021 at 6:30 p.m

C. Adjourn Meeting

Lisa Jobe made a motion to adjourn the meeting at 5:39PM.

Kathleen Burwell-Callero seconded the motion.

The board **VOTED** to approve the motion.

Roll Call

Kathleen Burwell-Callero	Aye
Emily Allen	Aye
Lisa Jobe	Aye
Kelley Laliberte	Aye
Keri Dalebout	Absent

There being no further business to be transacted, and upon motion duly made, seconded and approved, the meeting was adjourned at 5:39 PM.

Respectfully Submitted,
Emily Allen

Prepared by:
Kathy Fagundo

Noted by:

Board Secretary

Public Comment Rules: Members of the public may address the Board on agenda or non-agenda items through the teleconference platform, Zoom. Zoom does not require the members of the public to have an account or login. Please either utilize the chat option to communicate to the administrative team of your desire to address the Board or simply communicate orally your desire to address the Board when the Board asks for public comments. Speakers may be called in the order requests are received. Comments are limited to 2 minutes each, with no more than 15 minutes per single topic. If a member of the public utilizes a translator to address the Board, those individuals are allotted 4 minutes each. If the Board utilizes simultaneous translation equipment in a manner that allows the Board to hear the translated public testimony simultaneously, those individuals are allotted 2 minutes each. By law, the Board is allowed to take action only on items on the agenda. The Board may, at its discretion, refer a matter to school staff or calendar the issue for future discussion.

Note: The Governing Board encourages those with disabilities to participate fully in the public meeting process. If you need a disability-related modification or accommodation, including auxiliary aids or services, to participate in the public meeting, please contact the Governing Board Office at (562) 584-0427 at least 48 hours before the scheduled board meeting so every reasonable effort can be made to accommodate you. (Government Code § 54954.2; Americans with Disabilities Act of 1990, § 202 (42 U.S.C. § 12132)).

Coversheet

Executive Director's Report (p. 17-32)

Section: I. Opening Items
Item: I. Executive Director's Report (p. 17-32)
Purpose: FYI
Submitted by:
Related Material: Clarksville ED Report- March 2021.pdf

BACKGROUND:

Jenell Sherman will present the *Executive Director's Report*, highlighting Form 700s.
Claire Walker will give a HSVA update.



CLARKSVILLE
CHARTER SCHOOL

Executive Director Report

March 2021





Growing Together

2021-2022



Intent Process

Teacher intents were completed last month!

Last week teachers sent out intent to return forms to existing students

The process has taken months of planning

We will be tracking returning students to help determine the number of open spots

A big THANK YOU to Daniel and Alex in enrollments, Allie Suydam, Jenn Kramer and Camille Vocker for the planning, communication and tracking work you have done

Open Enrollment

Open Enrollment started Monday!

If you have friends looking for a great homeschool experience, direct them to the school website for enrollment information.

We will be tracking enrollment numbers through April 30 when open enrollment closes to determine whether a lottery is needed

Communication

Staff Town Hall Meetings

Friday Flash Newsletter

Town Hall Meetings for Families

Wednesday Weekly for Families





In-Person Services Update

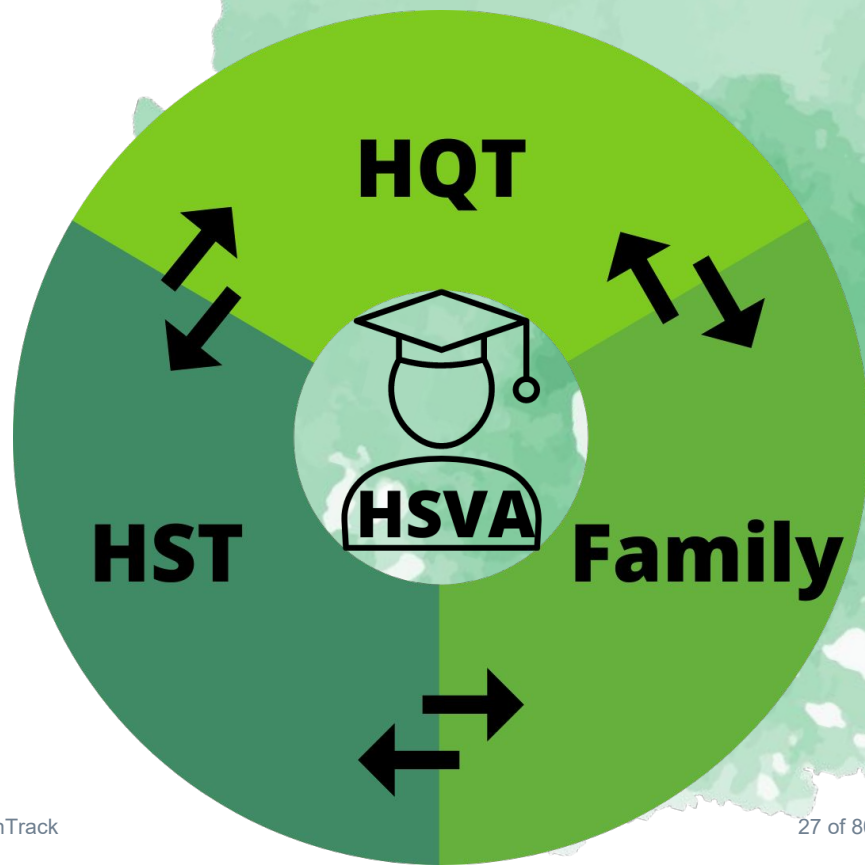
We are thrilled with how the Outdoor In-Person services are going. We plan to continue Outdoor In-Person services **ONLY** through the remainder of the 2020-21 school year.



High School Virtual Academy



The mission of HSVA is to provide standards-based, a-g instruction to high school students by a CA single-subject credentialed teacher. HSVA provides opportunities for students to learn synchronously and/or asynchronously and in a safe, online learning environment.



HSVA

2020-21 School Year



543 Students

- 6 charters
- 30 class offerings



**14
Single-Subject
Credentialed
Teachers**



**2 different
Curriculum
Options**

- HSVA - Live!
(synchronous)
- Edgenuity
(asynchronous)

HSVA

2022-22 School Year



15-20% Growth

- CTE offerings
- more electives



Single-Subject and CTE Credentialed Teachers



3 Different Curriculum Options

- HSVA - Live! (synchronous)
- Edgenuity (asynchronous online)
- textbook (asynchronous offline)

HSVA Student Spotlight



Sydney Johnson

Geoffrey is a 10th grade student who is in her second year of homeschooling! This is his first year with HSVA and is currently enrolled in English 10, Geometry, and US History.



LCAP Stakeholder Feedback

This is a crucial piece of our annual update for our schools. The LCAP is an opportunity for schools to:

- Comprehensive Strategic Planning
- Meaningful Stakeholder Engagement
- Accountability and Compliance

Upcoming Board Meeting LCAP “DRAFT” Goals and Actions Presentation and Stakeholder Surveys coming soon!



Testing Update

At this point in time, CAASPP testing is still scheduled to happen according to the State of California.

We will keep you updated!





Academic & Community Offerings for 2021-22

- High School Virtual Academy
- Junior High Virtual Academy
- Direct Instruction and Experiential Learning for Elementary
- Community Connections through events and clubs
- Multicultural Diversity and Inclusion Perspective Events
- English Learners Classes
- Special Education, 504, SST, Interventions through our Multi-Tiered System of Support
- All-Access Curriculum options online

Sequoia Grove Update

- [Sequoia Grove Website](#) is “live”
- First board meeting 3/4/21
- Board Meeting Schedule
- Hiring Update



**Thank you so much for
serving our school!**



Coversheet

February Financials (p. 33-55)

Section: II. Finance
Item: A. February Financials (p. 33-55)
Purpose: Vote
Submitted by:
Related Material: Financial Package -February 2021 - Clarksville.pdf

BACKGROUND:
Darlington Ahaiwe presents the February Financials.



Clarksville Charter School

Monthly Financial Presentation – February 2021

CLARKSVILLE - Highlights

- Year-end revenue projections increased by \$69k.
- Year-end expense projections increased by \$143k.
- Year-end surplus projected at \$270k. [January; \\$343k](#))
- Senate Bill-740 Requirements:

- 40/80 Expense Ratio ✓

Cert.	Instr.
45.2%	80.6%
603,545	126,998

- 25:1 Pupil-Teacher ratio ✓

Pupil:Teacher Ratio
19.63 :1

CLARKSVILLE - Revenue

- Other Local Revenue: Equipment sale.

	<i>Year-to-Date</i>			<i>Annual/Full Year</i>		
	Actual	Budget	Fav/(Unf)	Forecast	Budget	Fav/(Unf)
Revenue						
State Aid-Rev Limit	\$ 5,937,177	\$ 5,804,841	\$ 132,336	\$ 10,575,579	\$ 10,468,696	\$ 106,883
Federal Revenue	72,938	75,616	(2,678)	210,758	137,820	72,938
Other State Revenue	711,948	464,934	247,014	1,155,887	985,879	170,008
Other Local Revenue	74,448	-	74,448	74,448	-	74,448
Total Revenue	\$ 6,796,511	\$ 6,345,391	\$ 451,120	\$ 12,016,672	\$ 11,592,395	\$ 424,277

CLARKSVILLE - Expenses

- **Certificated Salaries & Benefits:** Staffing adjustments.
- **Sub agreement Services:** Increase in projected SPED expense.

Expenses	Year-to-Date			Annual/Full Year		
	Actual	Budget	Fav/(Unf)	Forecast	Budget	Fav/(Unf)
Certificated Salaries	\$ 3,219,857	\$ 3,015,909	\$ (203,948)	\$ 4,725,179	\$ 4,523,864	\$ (201,315)
Classified Salaries	337,293	330,667	(6,627)	492,408	496,000	3,592
Benefits	1,044,626	1,046,232	1,606	1,510,002	1,564,754	54,752
Books and Supplies	940,258	806,679	(133,579)	1,398,882	1,333,685	(65,197)
Subagreement Services	975,199	1,297,381	322,182	2,047,150	2,061,927	14,777
Operations	125,960	36,667	(89,293)	144,293	55,000	(89,293)
Facilities	45,304	43,200	(2,104)	66,904	64,800	(2,104)
Professional Services	521,886	789,681	267,796	1,167,308	1,234,309	67,001
Depreciation	1,435	1,467	32	2,168	2,200	32
Interest	139,617	174,972	35,355	192,159	185,441	(6,718)
Total Expenses	\$ 7,351,436	\$ 7,542,855	\$ 191,419	\$ 11,746,454	\$ 11,521,980	\$ (224,473)

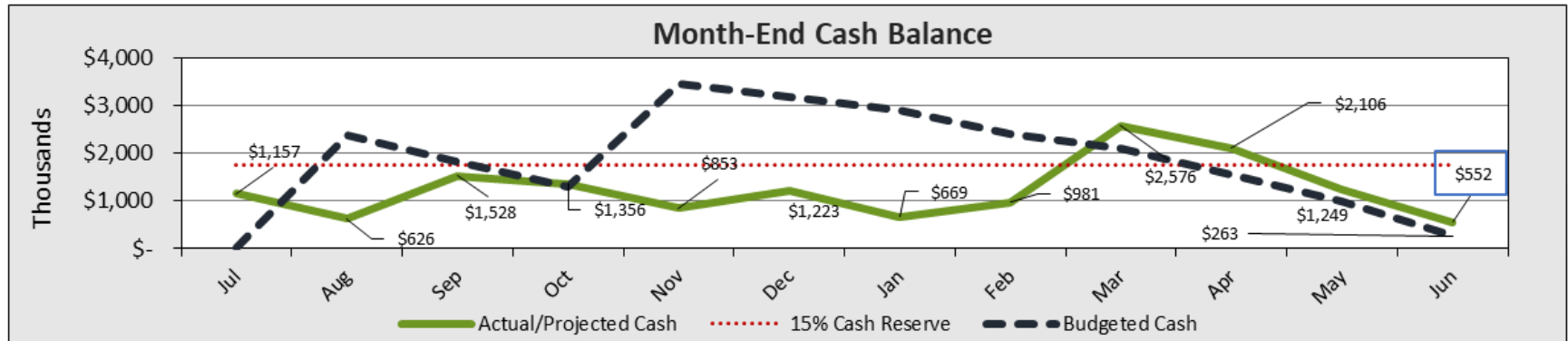
CLARKSVILLE - Fund Balance

- Year-end surplus projected to exceed budget.

	<i>Year-to-Date</i>			<i>Annual/Full Year</i>		
	Actual	Budget	Fav/(Unf)	Forecast	Budget	Fav/(Unf)
Total Surplus(Deficit)	\$ (554,925)	\$ (1,197,464)	\$ 642,539	\$ 270,218	\$ 70,414	\$ 199,804
Beginning Fund Balance	<u>288,347</u>	<u>288,347</u>		<u>288,347</u>	<u>288,347</u>	
Ending Fund Balance	<u>\$ (266,578)</u>	<u>\$ (909,117)</u>		<u>\$ 558,565</u>	<u>\$ 358,761</u>	
<i>As a % of Annual Expenses</i>	-2.3%	-7.9%		4.8%	3.1%	

CLARKSVILLE - Cash Balance

- Positive cash levels projected.



CLARKSVILLE - Appendix

- Monthly Cash Flow / Forecast 20-21
- Budget vs. Actual
- Statement of Financial Position
- Statement of Cash Flows
- Check Register
- AP Aging
- Due-To/Due-From Balance

Clarksville Charter School

Monthly Cash Flow/Forecast FY20-21

Revised 3/11/2021

ADA = 1158.15



Revenues

State Aid - Revenue Limit

	Jul-20	Aug-20	Sep-20	Oct-20	Nov-20	Dec-20	Jan-21	Feb-21	Mar-21	Apr-21	May-21	Jun-21	Year-End Accruals
8011 LCFF State Aid	-	409,292	409,292	736,726	736,726	736,726	736,726	736,726	327,889	160,561	154,601	152,593	2,849,807
8012 Education Protection Account	-	-	-	57,908	-	-	57,907	-	-	57,908	-	-	57,908
8019 State Aid - Prior Year	-	-	-	-	-	-	-	107,862	-	-	-	-	-
8096 In Lieu of Property Taxes	-	125,305	250,611	167,074	167,074	-	334,148	167,074	292,379	146,189	146,189	146,189	146,189
	-	534,597	659,903	961,708	903,800	736,726	1,128,781	1,011,662	620,268	364,658	300,790	298,782	3,053,903

Annual Forecast	Original Budget Total	Favorable / (Unfav.)
	ADA = 1158.15	
8,147,665	8,185,847	(38,183)
231,630	231,630	-
107,862	-	107,862
2,088,422	2,051,218	37,204
10,575,579	10,468,696	106,883

Federal Revenue

8181 Special Education - Entitlement	-	-	-	-	-	-	-	-	27,564	27,564	27,564	27,564	27,564
8296 Other Federal Revenue	-	-	28,575	-	-	44,363	-	-	-	-	-	-	-
	-	-	28,575	-	-	44,363	-	-	27,564	27,564	27,564	27,564	27,564

137,820	137,820	-
72,938	-	72,938
210,758	137,820	72,938

Other State Revenue

8311 State Special Education	-	31,083	38,693	-	125,596	125,596	62,798	32,486	55,728	55,728	55,728	55,728	55,728
8550 Mandated Cost	-	-	-	-	-	26,151	-	-	-	-	-	-	-
8560 State Lottery	-	-	-	-	-	-	65,171	-	-	57,478	-	-	107,823
8598 Prior Year Revenue	107,903	-	-	-	-	-	142,715	(107,862)	-	-	-	-	-
8599 Other State Revenue	-	-	-	89,535	-	(60,960)	15,120	17,923	-	-	-	-	-
	107,903	31,083	38,693	89,535	125,596	90,787	285,804	(57,453)	55,728	113,205	55,728	55,728	163,551

694,890	694,890	-
26,151	26,198	(47)
230,472	230,472	-
142,756	-	142,756
61,618	34,320	27,298
1,155,887	985,879	170,008

Other Local Revenue

8631 Sale of Equipment and Supplies	-	-	-	-	-	-	-	50,000	-	-	-	-	-
8980 Contributions, Unrestricted	-	-	-	-	-	22,461	-	1,987	-	-	-	-	-
	-	-	-	-	-	22,461	-	51,987	-	-	-	-	-

50,000	-	50,000
24,448	-	24,448
74,448	-	24,448

Total Revenue

107,903	565,680	727,171	1,051,243	1,029,396	894,337	1,414,585	1,006,196	703,559	505,427	384,082	382,074	3,245,018
----------------	----------------	----------------	------------------	------------------	----------------	------------------	------------------	----------------	----------------	----------------	----------------	------------------

12,016,672	11,592,395	374,277
-------------------	-------------------	----------------

Expenses

Certificated Salaries

1100 Teachers' Salaries	274,965	288,472	301,968	291,237	273,406	282,971	287,040	278,065	280,533	280,533	280,533	280,533	-
1175 Teachers' Extra Duty/Stipends	550	-	4,050	14,325	26,845	28,018	30,593	31,260	14,027	14,027	14,027	14,027	-
1200 Pupil Support Salaries	13,966	14,766	15,716	15,903	15,931	15,931	15,881	15,631	15,831	15,831	15,831	15,831	-
1300 Administrators' Salaries	79,726	67,650	68,500	69,058	68,840	70,840	64,841	70,585	59,592	59,592	59,592	59,592	-
1900 Other Certificated Salaries	13,941	16,461	15,678	16,348	14,975	14,975	14,975	14,975	6,348	6,348	6,348	6,348	-
	383,148	387,349	405,912	406,871	399,997	412,735	413,330	410,517	376,330	376,330	376,330	376,330	-

3,400,257	3,254,507	(145,749)
191,747	130,180	(61,566)
187,048	164,088	(22,960)
798,406	786,000	(12,406)
147,722	189,088	41,366
4,725,179	4,523,864	(201,315)

Classified Salaries

2200 Support Salaries	31,871	30,408	32,417	32,837	32,075	29,481	28,209	23,085	27,719	27,719	27,719	27,719	-
2400 Clerical and Office Staff Salaries	4,424	4,039	4,231	4,291	4,054	4,438	4,054	3,861	3,861	3,861	3,861	3,861	-
2900 Other Classified Salaries	7,683	7,183	7,183	7,243	7,198	7,198	7,198	12,630	7,198	7,198	7,198	7,198	-
	43,978	41,630	43,831	44,371	43,327	41,117	39,461	39,577	38,779	38,779	38,779	38,779	-

351,260	361,000	9,740
48,838	50,000	1,162
92,311	85,000	(7,311)
492,408	496,000	3,592

Benefits

3101 STRS	59,840	60,075	62,855	62,704	62,352	64,337	64,399	63,029	59,418	59,418	59,418	59,418	-
3202 PERS	-	-	-	-	-	-	-	-	1,544	1,544	1,544	1,544	-
3301 OASDI	2,610	2,465	2,601	2,635	2,570	2,455	2,352	2,359	2,272	2,272	2,272	2,272	-
3311 Medicare	5,972	6,008	6,321	6,347	6,226	6,378	6,356	6,320	5,866	5,866	5,866	5,866	-
3401 Health and Welfare	41,875	61,161	51,705	51,532	52,006	51,611	51,648	51,943	39,375	39,375	39,375	39,375	-
3501 State Unemployment	4,673	1,498	236	524	160	146	15,337	504	3,528	1,764	1,764	1,764	-
3601 Workers' Compensation	5,857	2,179	4,018	4,018	4,018	4,018	4,018	3,043	5,664	5,664	5,664	5,664	-
3901 Other Benefits	10,404	-	-	(6,669)	-	-	-	3,598	-	-	-	-	-
	131,231	133,386	127,736	121,089	127,332	128,945	144,110	130,797	117,667	115,903	115,903	115,903	-

737,263	832,391	95,128
6,177	19,295	13,118
29,134	30,752	1,618
73,394	72,788	(606)
570,980	502,500	(68,480)
31,898	36,750	4,852
53,823	70,278	16,455
7,333	-	(7,333)
1,510,002	1,564,754	54,752

Books and Supplies

4302 School Supplies	36,976	129,247	89,248	89,007	58,445	106,083	95,262	117,730	20,960	59,809	120,364	83,353	-
4305 Software	4,026	10,631	65,340	(8,513)	16,678	11,675	6,657	9,730	9,200	9,200	9,200	9,200	-
4310 Office Expense	10,533	216	2,022	1,604	2,627	3,350	1,559	776	742	742	742	742	-
4311 Business Meals	-	-	79	199	183	-	-	92	75	75	75	75	-
4312 School Fundraising Expense	-	-	-	-	-	-	-	-	17	17	17	17	-
4400 Noncapitalized Equipment	158	30,495	12,480	2,041	-	31,332	2,152	138	9,873	28,173	56,697	39,263	-
	51,692	170,589	169,169	84,338	77,932	152,440	105,631	128,467	40,866	98,015	187,094	132,649	-

1,006,484	1,006,484	-
153,025	110,400	(42,625)
25,653	8,900	(16,753)
853	900	47
67	200	133
212,801	206,801	(6,000)
1,398,882	1,333,685	(65,197)

Subagreement Services

5102 Special Education	451	16,364	17,409	52,595	122,438	24,432	50,810	94,815	28,125	28,125	28,125	28,125	-
5105 Security	-	-	-	-	-	-	-	-	75	75	75	75	-
5106 Other Educational Consultants	8,777	33,570	135,324	29,184	41,652	166,074	(51,980)	(157,959)	54,672	156,005	313,956	217,417	-
5107 Instructional Services	49,551	48,260	48,905	48,906	48,905	48,906	48,905	48,905	54,275	54,275	54,275	54,275	-
	58,779	98,195	201,638	130,685	212,996	239,412	47,735	(14,239)	137,147	238,481	396,431	299,892	-

491,815	337,500	(154,315)
300	900	600
946,691	1,136,662	189,972
608,344	586,865	(21,479)
2,047,150	2,061,927	14,777

Operations and Housekeeping

5201 Auto and Travel	-	-	88	-	-	-	-	-	1,108	1,108	1,108	1,108	-
5300 Dues & Memberships	-	-	85	1,070	-	-	-	-	342	342	342	342	-
5400 Insurance	3,125	17,687	10,406	12,183	11,174	10,405	10,405	9,637	3,125	3,125	3,125	3,125	-
5501 Utilities	-	-	651	-	-	908	785	-	-	-	-	-	-
5502 Janitorial Services	-	-	-	1,688	750	750	750	750	-	-	-	-	-
5900 Communications	-	-	4,008	849	531	16,377	521	5,446	-	-			

Clarksville Charter School

Monthly Cash Flow/Forecast FY20-21

Revised 3/11/2021

ADA = 1158.15



	Jul-20	Aug-20	Sep-20	Oct-20	Nov-20	Dec-20	Jan-21	Feb-21	Mar-21	Apr-21	May-21	Jun-21	Year-End Accruals	Annual Forecast	Original Budget Total	Favorable / (Unfav.)
5604 Other Leases	-	-	-	-	-	-	-	-	358	358	358	358	-	1,433	4,300	2,867
5610 Repairs and Maintenance	-	840	-	-	-	-	-	-	-	-	-	-	-	840	-	(840)
	10,239	5,722	4,882	4,882	4,882	4,882	4,907	4,907	5,400	5,400	5,400	5,400	-	66,904	64,800	(2,104)
Professional/Consulting Services																
5802 Audit & Taxes	-	-	-	-	4,500	-	-	-	-	-	-	-	-	4,500	6,300	1,800
5803 Legal	-	15,557	464	4,512	7,716	3,290	3,383	1,639	1,708	1,708	1,708	1,708	-	43,395	20,500	(22,895)
5804 Professional Development	-	-	180	274	-	3,365	4,045	-	242	242	242	242	-	8,830	2,900	(5,930)
5805 General Consulting	-	200	300	800	700	2,213	921	106	283	283	283	283	-	6,373	3,400	(2,973)
5806 Special Activities/Field Trips	-	96	-	1,204	1,133	14,776	42,124	12,635	7,140	20,374	41,002	28,394	-	168,877	168,877	-
5807 Bank Charges	560	980	464	739	752	836	768	567	200	200	200	200	-	6,466	2,300	(4,166)
5808 Printing	39	-	-	-	-	-	-	-	-	-	-	-	-	39	-	(39)
5809 Other taxes and fees	1,103	119	1,500	48	30	30	-	1,679	1,780	1,780	1,780	1,780	-	11,629	20,470	8,841
5810 Payroll Service Fee	974	1,700	336	1,252	1,870	979	672	1,682	773	773	773	773	-	12,555	9,656	(2,899)
5811 Management Fee	66,313	65,271	65,842	65,841	66,163	63,466	66,399	66,449	68,220	68,220	68,220	68,220	-	798,622	789,732	(8,890)
5812 District Oversight Fee	-	-	-	-	-	103,980	(311,941)	58,293	6,203	3,647	3,008	2,988	239,579	105,756	209,374	103,618
5815 Public Relations/Recruitment	-	-	-	-	-	-	-	-	67	67	67	67	-	267	800	533
	68,989	83,924	69,085	74,670	82,863	192,933	(193,629)	143,051	86,615	97,293	117,282	104,654	239,579	1,167,308	1,234,309	67,001
Depreciation																
6900 Depreciation Expense	179	4,538	4,538	(8,537)	179	179	179	179	183	183	183	183	-	2,168	2,200	32
	179	4,538	4,538	(8,537)	179	179	179	179	183	183	183	183	-	2,168	2,200	32
Interest																
7438 Interest Expense	21,434	-	35,996	-	-	50,625	-	31,562	52,542	-	-	-	-	192,159	185,441	(6,718)
	21,434	-	35,996	-	-	50,625	-	31,562	52,542	-	-	-	-	192,159	185,441	(6,718)
Total Expenses	772,917	944,092	1,078,180	874,322	962,760	1,252,693	574,794	891,679	860,113	974,967	1,241,985	1,078,373	239,579	11,746,454	11,521,980	(224,474)
Monthly Surplus (Deficit)	(665,014)	(378,412)	(351,009)	176,921	66,636	(358,356)	839,791	114,517	(156,554)	(469,540)	(857,903)	(696,300)	3,005,439	270,218	70,415	149,804
Cash Flow Adjustments																
Monthly Surplus (Deficit)	(665,014)	(378,412)	(351,009)	176,921	66,636	(358,356)	839,791	114,517	(156,554)	(469,540)	(857,903)	(696,300)	3,005,439	270,218		
Cash flows from operating activities																
Depreciation/Amortization	179	4,538	4,538	(8,537)	179	179	179	179	183	183	183	183	-	2,168		
Public Funding Receivables	1,199,028	129,282	397	40,147	-	108,875	6,064	(50,409)	-	-	-	-	(3,245,018)	(1,811,634)		
Grants and Contributions Rec.	1,775,280	-	267,704	262,413	-	(5,881)	6,814	799,300	-	-	-	-	-	3,105,631		
Prepaid Expenses	(87,196)	14,424	(880)	(11,815)	14,424	(25)	-	-	-	-	-	-	-	(71,068)		
Other Assets	(100,000)	-	-	-	-	-	-	-	-	-	-	-	-	(100,000)		
Accounts Payable	5,792	239,394	18,135	(364,911)	123,467	46,456	(349,602)	24,471	-	-	-	-	239,579	(17,219)		
Accrued Expenses	121,304	70,452	(26,078)	25,668	(143,443)	118,360	(398,902)	49,681	-	-	-	-	-	(182,958)		
Deferred Revenue	-	-	44,363	-	-	16,597	(32,486)	-	-	-	-	-	-	28,474		
Other Liabilities	(1,774,400)	-	-	-	-	-	-	-	-	-	-	-	-	(1,774,400)		
Cash flows from investing activities																
Purchases of Prop. And Equip.	-	(261,500)	-	261,500	-	-	-	-	-	-	-	-	-	-		
Cash flows from financing activities																
Proceeds from Factoring	626,200	-	1,252,400	-	-	1,070,700	-	-	1,751,400	-	-	-	-	4,700,700		
Payments on Factoring	(834,300)	(348,700)	(307,700)	(553,900)	(564,100)	(626,200)	(626,200)	(626,200)	-	-	-	-	-	(4,487,300)		
Total Change in Cash	266,874	(530,522)	901,868	(172,514)	(502,836)	370,706	(554,341)	311,541	1,595,029	(469,356)	(857,720)	(696,116)				
Cash, Beginning of Month	889,812	1,156,686	626,163	1,528,031	1,355,517	852,682	1,223,388	669,047	980,587	2,575,617	2,106,260	1,248,540				
Cash, End of Month	1,156,686	626,163	1,528,031	1,355,517	852,682	1,223,388	669,047	980,587	2,575,617	2,106,260	1,248,540	552,424				

Cert.	Instr.
45.2%	80.6%
603,545	126,998

Pupil:Teacher Ratio	
19.63	:1

Clarksville Charter School

Budget vs Actual

For the period ended February 28, 2021

	Current Period Actual	Current Period Budget	Current Period Variance	Current Year Actual	YTD Budget	YTD Budget Variance	Total Budget
Revenues							
State Aid - Revenue Limit							
LCFF State Aid	\$ 736,726	\$ 736,726	\$ (0)	\$ 4,502,214	\$ 4,502,216	\$ (2)	\$ 8,185,847
Education Protection Account	-	-	-	115,815	115,815	-	231,630
State Aid - Prior Year	107,862	-	107,862	107,862	-	107,862	-
In Lieu of Property Taxes	167,074	163,698	3,376	1,211,286	1,186,810	24,476	2,051,218
Total State Aid - Revenue Limit	1,011,662	900,424	111,238	5,937,177	5,804,841	132,336	10,468,696
Federal Revenue							
Special Education - Entitlement	-	12,374	(12,374)	-	75,616	(75,616)	137,820
Other Federal Revenue	-	-	-	72,938	-	72,938	-
Total Federal Revenue	-	12,374	(12,374)	72,938	75,616	(2,678)	137,820
Other State Revenue							
State Special Education	32,486	62,388	(29,902)	416,252	381,259	34,993	694,890
Mandated Cost	-	-	-	26,151	26,198	(47)	26,198
State Lottery	-	-	-	65,171	57,478	7,693	230,472
Prior Year Revenue	(107,862)	-	(107,862)	142,756	-	142,756	-
Other State Revenue	17,923	-	17,923	61,618	-	61,618	34,320
Total Other State Revenue	(57,453)	62,388	(119,841)	711,948	464,934	247,014	985,879
Other Local Revenue							
Sale of Equipment and Supplies	50,000	-	50,000	50,000	-	50,000	-
Contributions, Unrestricted	1,987	-	1,987	24,448	-	24,448	-
Total Other Local Revenue	51,987	-	51,987	74,448	-	74,448	-
Total Revenues	\$ 1,006,196	\$ 975,186	\$ 31,010	\$ 6,796,511	\$ 6,345,391	\$ 451,120	\$ 11,592,395
Expenses							
Certificated Salaries							
Teachers' Salaries	\$ 278,065	\$ 271,209	\$ (6,856)	\$ 2,278,125	\$ 2,169,672	\$ (108,453)	\$ 3,254,508
Teachers' Extra Duty/Stipends	31,260	10,848	(20,412)	135,640	86,787	(48,853)	130,180
Pupil Support Salaries	15,631	13,674	(1,957)	123,724	109,392	(14,332)	164,088
Administrators' Salaries	70,585	65,500	(5,085)	560,039	524,000	(36,039)	786,000
Other Certificated Salaries	14,975	15,757	782	122,328	126,059	3,730	189,088
Total Certificated Salaries	410,517	376,989	(33,528)	3,219,857	3,015,909	(203,948)	4,523,864
Classified Salaries							
Support Salaries	23,085	30,083	6,998	240,383	240,667	283	361,000
Clerical and Office Staff Salaries	3,861	4,167	305	33,392	33,333	(59)	50,000
Other Classified Salaries	12,630	7,083	(5,547)	63,518	56,667	(6,851)	85,000
Total Classified Salaries	39,577	41,333	1,756	337,293	330,667	(6,627)	496,000
Benefits							
State Teachers' Retirement System, certificated positions	63,029	69,366	6,337	499,591	554,927	55,336	832,391
Public Employees' Retirement System, classified positions	-	1,608	1,608	-	12,863	12,863	19,295
OASDI/Medicare/Alternative, certificated positions	2,359	2,563	204	20,046	20,501	456	30,752
Medicare/Alternative, certificated positions	6,320	6,066	(255)	49,930	48,525	(1,404)	72,788
Health and Welfare Benefits, certificated positions	51,943	41,875	(10,068)	413,480	335,000	(78,480)	502,500
State Unemployment Insurance, certificated positions	504	7,350	6,846	23,078	27,563	4,485	36,750
Workers' Compensation Insurance, certificated positions	3,043	5,857	2,814	31,169	46,852	15,684	70,278
Other Benefits, certificated positions	3,598	-	(3,598)	7,333	-	(7,333)	-
Total Benefits	130,797	134,684	3,887	1,044,626	1,046,232	1,606	1,564,754
Books & Supplies							
School Supplies	117,730	67,557	(50,173)	721,999	602,598	(119,401)	1,006,484
Software	9,730	9,200	(530)	116,225	73,600	(42,625)	110,400
Office Expense	776	742	(34)	22,686	5,933	(16,753)	8,900
Business Meals	92	75	(17)	553	600	47	900
School Fundraising Expense	-	17	17	-	133	133	200
Noncapitalized Equipment	138	13,881	13,742	78,796	123,815	45,019	206,801
Total Books & Supplies	128,467	91,471	(36,996)	940,258	806,679	(133,579)	1,333,685
Subagreement Services							
Special Education	94,815	28,125	(66,690)	379,315	225,000	(154,315)	337,500
Security	-	75	75	-	600	600	900
Other Educational Consultants	(157,959)	76,295	234,254	204,641	680,537	475,896	1,136,662
Instructional Services	48,905	48,905	0	391,243	391,243	1	586,865
Total Subagreement Services	(14,239)	153,400	167,639	975,199	1,297,381	322,182	2,061,927

Clarksville Charter School

Budget vs Actual

For the period ended February 28, 2021

	Current Period Actual	Current Period Budget	Current Period Variance	Current Year Actual	YTD Budget	YTD Budget Variance	Total Budget
Operations & Housekeeping							
Auto and Travel	-	1,108	1,108	88	8,867	8,779	13,300
Dues & Memberships	-	342	342	1,155	2,733	1,578	4,100
Insurance	9,637	3,125	(6,512)	85,022	25,000	(60,022)	37,500
Utilities	-	-	-	2,343	-	(2,343)	-
Janitorial Services	750	-	(750)	4,688	-	(4,688)	-
Communications	5,446	-	(5,446)	27,733	-	(27,733)	-
Postage and Shipping	1,029	8	(1,020)	4,932	67	(4,865)	100
Total Operations & Housekeeping	16,861	4,583	(12,278)	125,960	36,667	(89,293)	55,000
Facilities, Repairs & Other Leases							
Rent	3,760	5,000	1,240	35,436	40,000	4,564	60,000
Additional Rent	1,147	-	(1,147)	9,028	-	(9,028)	-
Equipment Leases	-	42	42	-	333	333	500
Other Leases	-	358	358	-	2,867	2,867	4,300
Repairs and Maintenance	-	-	-	840	-	(840)	-
Total Facilities, Repairs & Other Leases	4,907	5,400	493	45,304	43,200	(2,104)	64,800
Professional/Consulting Services							
Audit & Taxes	-	-	-	4,500	6,300	1,800	6,300
Legal	1,639	1,708	69	36,561	13,667	(22,895)	20,500
Professional Development	-	242	242	7,864	1,933	(5,930)	2,900
General Consulting	106	283	177	5,240	2,267	(2,973)	3,400
Special Activities/Field Trips	12,635	11,335	(1,299)	71,967	101,109	29,142	168,877
Bank Charges	567	200	(367)	5,666	1,500	(4,166)	2,300
Printing	-	-	-	39	-	(39)	-
Other Taxes and Fees	1,679	1,780	101	4,509	13,350	8,841	20,470
Payroll Service Fee	1,682	805	(878)	9,465	6,438	(3,028)	9,656
Management Fee	66,449	65,811	(638)	525,743	526,488	745	789,732
District Oversight Fee	58,293	18,008	(40,285)	(149,668)	116,097	265,765	209,374
Public Relations/Recruitment	-	67	67	-	533	533	800
Total Professional/Consulting Services	143,051	100,239	(42,812)	521,886	789,681	267,796	1,234,309
Depreciation							
Depreciation Expense	179	183	4	1,435	1,467	32	2,200
Total Depreciation	179	183	4	1,435	1,467	32	2,200
Interest							
Interest Expense	31,562	-	(31,562)	139,617	174,972	35,355	185,441
Total Interest	31,562	-	(31,562)	139,617	174,972	35,355	185,441
Total Expenses	\$ 891,679	\$ 908,283	\$ 16,604	\$ 7,351,436	\$ 7,542,855	\$ 191,419	\$ 11,521,980
Change in Net Assets	114,517	66,903	47,615	(554,925)	(1,197,464)	642,540	70,414
Net Assets, Beginning of Period	(381,095)			288,347			
Net Assets, End of Period	\$ (266,578)			\$ (266,578)			

Clarksville Charter School

Statement of Financial Position

February 28, 2021

	Current Balance	Beginning Year Balance	YTD Change	YTD % Change
Assets				
Current Assets				
Cash & Cash Equivalents	\$ 980,587	\$ 889,812	\$ 90,775	10%
Accounts Receivable	7,919	539,849	(531,931)	-99%
Public Funding Receivables	57,452	1,490,836	(1,433,384)	-96%
Factored Receivables	(1,870,000)	(834,300)	(1,035,700)	124%
Due To/From Related Parties	780,413	780,413	-	0%
Prepaid Expenses	197,427	126,359	71,068	56%
Total Current Assets	153,799	2,992,970	(2,839,172)	-95%
Long-Term Assets				
Property & Equipment, Net	10,444	11,879	(1,435)	-12%
Deposits	105,500	5,500	100,000	1818%
Total Long Term Assets	115,944	17,379	98,565	567%
Total Assets	\$ 269,743	\$ 3,010,350	\$ (2,740,607)	-91%
Liabilities				
Current Liabilities				
Accounts Payable	\$ 106,926	\$ 363,724	\$ (256,798)	-71%
Accrued Liabilities	383,554	566,512	(182,958)	-32%
Deferred Revenue	45,840	1,791,766	(1,745,926)	-97%
Total Current Liabilities	536,321	2,722,003	(2,185,682)	-80%
Total Liabilities	536,321	2,722,003	(2,185,682)	-80%
Total Net Assets	(266,578)	288,347	(554,925)	-192%
Total Liabilities and Net Assets	\$ 269,743	\$ 3,010,350	\$ (2,740,607)	-91%

Clarksville Charter School

Statement of Cash Flows

For the period ended February 28, 2021

	Month Ended 02/28/21	YTD Ended 02/28/21
Cash Flows from Operating Activities		
Change in Net Assets	\$ 114,517	\$ (554,925)
Adjustments to reconcile change in net assets to net cash flows from operating activities:		
Depreciation	179	1,435
Decrease/(Increase) in Operating Assets:		
Public Funding Receivables	(50,409)	1,433,384
Grants, Contributions & Pledges Receivable	173,100	1,567,631
Prepaid Expenses	-	(71,068)
Other Assets	-	(100,000)
(Decrease)/Increase in Operating Liabilities:		
Accounts Payable	24,471	(256,798)
Accrued Expenses	49,681	(182,958)
Deferred Revenue	-	(1,745,926)
Total Cash Flows from Operating Activities	311,541	90,775
Change in Cash & Cash Equivalents	311,541	90,775
Cash & Cash Equivalents, Beginning of Period	669,047	889,812
Cash and Cash Equivalents, End of Period	\$ 980,587	\$ 980,587

Clarksville Charter School

Check Register

For the period ended February 28, 2021

Check Number	Vendor Name	Check Date	Check Amount
10719	Penni Warford	2/19/2021	VOID
10765	Gold Country Taekwondo	2/19/2021	VOID
10815	Kelly BJJ	2/19/2021	VOID
10984	WriteAtHome, Inc	2/19/2021	VOID
11535	Rainbow Resource Center	2/25/2021	VOID
11545	El Dorado County Office of Education	2/1/2021	\$ 62.29
11546	El Dorado County Office of Education	2/1/2021	106,711.48
11547	8x8, INC.	2/4/2021	190.9
11548	All Star Gymnastics	2/4/2021	615.70
11549	Amy Walters	2/4/2021	750.00
11550	Ballet Rejoice School For The Arts	2/4/2021	226.00
11551	BookShark	2/4/2021	136.32
11552	Bright Thinker	2/4/2021	124.49
11553	Celia Frazer	2/4/2021	300.00
11554	Charter Impact, Inc.	2/4/2021	17,393.00
11555	Corrinne Carrabello	2/4/2021	30.00
11556	First Choice Tutoring	2/4/2021	220.50
11557	Foothill Taekwondo	2/4/2021	327.00
11558	Francesca Anderson	2/4/2021	420.00
11559	Gavin Dague	2/4/2021	400.00
11560	Guitar Center, Inc	2/4/2021	381.00
11561	Heather Williams	2/4/2021	280.00
11562	History Unboxed LLC	2/4/2021	1,293.76
11563	Janelle Blocher	2/4/2021	360.00
11564	JJ Music Lessons	2/4/2021	180.00
11565	Justin H. Bingham	2/4/2021	440.00
11566	Katie Walker	2/4/2021	260.00
11567	Kimberly Malta	2/4/2021	600.00
11568	Lakeshore	2/4/2021	187.64
11569	Laura Chiappe	2/4/2021	10,690.00
11570	Learning Without Tears	2/4/2021	28.52
11571	LEGO Education	2/4/2021	123.28
11572	Linda Reams	2/4/2021	558.00
11573	Little Passports	2/4/2021	338.11
11574	Mariko Reeves	2/4/2021	300.00
11575	MEL Science U.S., LLC	2/4/2021	397.90
11576	Mercurius	2/4/2021	125.14
11577	Momni Cafe	2/4/2021	525.00
11578	Moving Beyond the Page	2/4/2021	1,073.43
11579	Nunez Martial Arts Academy	2/4/2021	350.00
11580	Olha Shevchyk	2/4/2021	450.00
11581	OnlineG3.com	2/4/2021	747.00
11582	Pamela Hayes Classical Ballet	2/4/2021	148.00
11583	Peace Hill Press, Inc. dba Well Trained Mind Press	2/4/2021	79.49
11584	PG&E	2/4/2021	391.85
11585	Provenance	2/4/2021	166,689.93
11586	R&D Educational Systems Inc. Sombrero Time	2/4/2021	1,167.00
11587	Rainbow Resource Center	2/4/2021	191.06
11588	School of Rock Elk Grove & Roseville	2/4/2021	491.00
11589	School Pathways, LLC	2/4/2021	2,261.64
11590	Scott J. Budnik	2/4/2021	120.00
11591	Shankari Arcot	2/4/2021	160.00
11592	Sheri Joyce aka Well Read Fred Writing Classes	2/4/2021	180.00
11593	Stephanie Strong	2/4/2021	400.00
11594	T-Mobile	2/4/2021	15,840.00
11595	Teacher Synergy, LLC	2/4/2021	45.18

Clarksville Charter School

Check Register

For the period ended February 28, 2021

Check Number	Vendor Name	Check Date	Check Amount
11596	Teaching Textbooks	2/4/2021	67.08
11597	The Critical Thinking Co.	2/4/2021	155.90
11598	Theory Dance LLC	2/4/2021	210.00
11599	Therapeutic Language Clinic, Inc.	2/4/2021	990.00
11600	Thomas Purvance	2/4/2021	202.50
11601	Wonder Crate	2/4/2021	287.52
11602	Young, Minney & Corr, LLP - CA Trust	2/4/2021	3,192.42
11603	American River Speech Therapy	2/10/2021	250.00
11604	Black Oak Therapy	2/10/2021	276.00
11605	Charter Impact, Inc.	2/10/2021	638.00
11606	Forever Dance Lake Tahoe	2/10/2021	310.00
11607	Growing Healthy Children Therapy Services, Inc.	2/10/2021	24,094.25
11608	It Takes The Village	2/10/2021	130.00
11609	Provenance	2/10/2021	352.00
11610	San Diego State University Foundation	2/10/2021	22,860.00
11611	Specialized Therapy Services, Inc	2/10/2021	990.00
11612	StaffRehab LLC	2/10/2021	183.25
11613	Amazon Capital Services	2/18/2021	9.05
11614	Art of Problem Solving	2/18/2021	155.80
11615	Barbara Lee Sheddan	2/18/2021	2,100.00
11616	CB Music	2/18/2021	2,236.00
11617	Charter Impact, Inc.	2/18/2021	854.53
11618	CharterSAFE	2/18/2021	14,423.00
11619	DNA Dance Collective	2/18/2021	900.00
11620	E-Therapy LLC	2/18/2021	1,016.25
11621	Forever Dance Lake Tahoe	2/18/2021	320.00
11622	Gavin Dague	2/18/2021	400.00
11623	Growing Healthy Children Therapy Services, Inc.	2/18/2021	9,490.75
11624	Home Science Tools	2/18/2021	56.69
11625	Homeschool Planet	2/18/2021	74.95
11626	Hooked on Phonics	2/18/2021	42.89
11627	It Takes The Village	2/18/2021	65.00
11628	Jabbergym	2/18/2021	230.00
11629	Katie Walker	2/18/2021	260.00
11630	Kelly BJJ	2/18/2021	588.00
11631	KiwiCo, Inc.	2/18/2021	3,404.26
11632	Lakeshore	2/18/2021	48.21
11633	Lotus Educational Services, Inc.	2/18/2021	159.50
11634	Nancy Barcal	2/18/2021	715.00
11635	Northern California Children's Chorus	2/18/2021	65.00
11636	PresenceLearning, Inc.	2/18/2021	5,931.45
11637	Provenance	2/18/2021	480.00
11638	Rainbow Resource Center	2/18/2021	62.42
11639	Robin Clary	2/18/2021	300.00
11640	Sabado School Of Music Inc.	2/18/2021	1,736.00
11641	StaffRehab LLC	2/18/2021	102.25
11642	Starfall Education Foundation	2/18/2021	35.00
11643	T-Mobile	2/18/2021	1,320.00
11644	Teacher Synergy, LLC	2/18/2021	179.38
11645	Top Secret Adventures	2/18/2021	42.30
11646	Y Corporation dba Mathnasium	2/18/2021	780.00
11647	Young, Minney & Corr, LLP - CA Trust	2/18/2021	1,342.11
11648	Gold Country Taekwondo	2/22/2021	189.00
11649	Kelly BJJ	2/22/2021	145.00
11650	WriteAtHome, Inc	2/22/2021	799.00
11651	FJM Palms Associates, LLC	2/24/2021	4,907.00
11652	James Daniel MacKinnon	2/24/2021	750.00

Clarksville Charter School

Check Register

For the period ended February 28, 2021

Check Number	Vendor Name	Check Date	Check Amount
11653	Viktoriya Chance	2/24/2021	540.00
11654	4EEE	2/25/2021	300.00
11655	8x8, INC.	2/25/2021	192.18
11656	Academics In A Box Inc	2/25/2021	167.70
11657	Activities for Learning, Inc.	2/25/2021	31.75
11658	Alina Ilchuk	2/25/2021	700.00
11659	All Star Gymnastics	2/25/2021	762.00
11660	Amy Walters	2/25/2021	400.00
11661	Barbara Lee Sheddan	2/25/2021	200.00
11662	Bitsbox	2/25/2021	86.85
11663	Bob Sweat M.Ed.MAT, Tutoring	2/25/2021	675.00
11664	BookShark	2/25/2021	403.26
11665	Brave Writer, LLC	2/25/2021	229.00
11666	Brett Place	2/25/2021	960.00
11667	Bright Solutions	2/25/2021	34.11
11668	Bright Thinker	2/25/2021	481.72
11669	Chappell Ranch, LLC	2/25/2021	400.00
11670	Chiung-Hwa Bryce	2/25/2021	350.00
11671	Crocker House Creative Arts	2/25/2021	1,260.00
11672	eat2explore	2/25/2021	109.84
11673	Educational Development Corporation	2/25/2021	15.99
11674	eDynamic Learning	2/25/2021	795.00
11675	First Choice Tutoring	2/25/2021	714.00
11676	Forever Dance Lake Tahoe	2/25/2021	830.00
11677	Gravitas Publications, Inc.	2/25/2021	112.54
11678	Hawkins School of Performing Arts	2/25/2021	300.00
11679	Heather Williams	2/25/2021	420.00
11680	Home Science Tools	2/25/2021	309.57
11681	Institute for Excellence in Writing	2/25/2021	63.48
11682	Jackris Publishing, LLC	2/25/2021	60.92
11683	Janelle Blocher	2/25/2021	997.00
11684	JCC Chabad of Roseville	2/25/2021	1,120.00
11685	Jostens Inc	2/25/2021	656.69
11686	Justin H. Bingham	2/25/2021	320.00
11687	Karina Sheremet	2/25/2021	280.00
11688	KiwiCo, Inc.	2/25/2021	5,352.34
11689	Kline Music	2/25/2021	75.08
11690	Lafitte Music Center	2/25/2021	456.00
11691	Law Offices of Jennifer McQuarrie	2/25/2021	297.00
11692	Leighton Dance Project, Inc.	2/25/2021	70.00
11693	Linda Reams	2/25/2021	645.00
11694	Lindi K Harry	2/25/2021	600.00
11695	Lisa Bond-Torgerson	2/25/2021	810.00
11696	Little Passports	2/25/2021	1,147.41
11697	Logic of English	2/25/2021	153.09
11698	Mariko Reeves	2/25/2021	400.00
11699	MEL Science U.S., LLC	2/25/2021	209.40
11700	MEL Science U.S., LLC	2/25/2021	628.20
11701	Michelle Jones	2/25/2021	520.00
11702	Momni Cafe	2/25/2021	106.25
11703	Moving Beyond the Page	2/25/2021	117.98
11704	MoxieBox Art, Inc.	2/25/2021	153.03
11705	Mystery Science	2/25/2021	69.00
11706	Nessy Learning LLC	2/25/2021	100.00
11707	Nicole Thomas	2/25/2021	79.00
11708	Nunez Martial Arts Academy	2/25/2021	350.00
11709	Oak Meadow Inc.	2/25/2021	293.90

Clarksville Charter School

Check Register

For the period ended February 28, 2021

Check Number	Vendor Name	Check Date	Check Amount
11710	Olga Petrenko	2/25/2021	420.00
11711	Pamela Hayes Classical Ballet	2/25/2021	148.00
11712	Paula Vance	2/25/2021	160.00
11713	Provenance	2/25/2021	4,754.94
11714	Rachel Eldridge	2/25/2021	180.00
11715	VOID	VOID	VOID
11716	Rainbow Resource Center	2/25/2021	4,097.71
11717	Rhonda Asbenson	2/25/2021	1,080.00
11718	Robin Clary	2/25/2021	300.00
11719	Rocklin Music Academy	2/25/2021	260.00
11720	Satori Management, Inc	2/25/2021	2,360.00
11721	Sean Bianco	2/25/2021	260.00
11722	Shannon Draper's Music Studio	2/25/2021	300.00
11723	Singapore Math Inc.	2/25/2021	431.91
11724	Starfall Education Foundation	2/25/2021	35.00
11725	Stephanie Strong	2/25/2021	320.00
11726	Studies Weekly	2/25/2021	96.36
11727	Studio 65 Dance Company	2/25/2021	870.00
11728	T-Mobile	2/25/2021	1,320.00
11729	Teacher Synergy, LLC	2/25/2021	177.74
11730	Teaching Textbooks	2/25/2021	701.96
11731	The Lampo Group, LLC	2/25/2021	29.99
11732	Thinkwell Corporation	2/25/2021	150.00
11733	Timberdoodle.com	2/25/2021	87.98
11734	Time4Learning.com	2/25/2021	678.30
11735	Time4Writing.com	2/25/2021	119.00
11736	Trigger Memory Co	2/25/2021	78.90
11737	Vanessa Shaw	2/25/2021	830.00
11738	Viktorija Dzhumara	2/25/2021	240.00
11739	Wendy Stephens	2/25/2021	1,095.00
11740	Wonder Crate	2/25/2021	149.95
11741	WriteShop	2/25/2021	15.00
11742	Y Corporation dba Mathnasium	2/25/2021	780.00
11743	Yuko Ray	2/25/2021	102.00
11744	Rainbow Resource Center	2/25/2021	<u>1,420.67</u>

Total Disbursements in February \$ 499,628.01

Clarksville Charter School

Accounts Payable Aging

February 28, 2021

Vendor Name	Invoice/Credit Number	Invoice Date	Date Due	Current	1 - 30 Days Past Due	31 - 60 Days Past Due	61 - 90 Days Past Due	Over 90 Days Past Due	Total
A Brighter Child	56835	2/2/2021	3/4/2021	\$ 290	\$ -	\$ -	\$ -	\$ -	\$ 290
A Brighter Child	57041	2/12/2021	3/14/2021	96.92	-	-	-	-	96.92
A Brighter Child	57193	2/9/2021	3/11/2021	113.08	-	-	-	-	113.08
Activities for Learning, Inc.	382053	11/3/2020	12/3/2020	1.94	-	-	-	-	1.94
All About Learning Press, Inc.	905408	1/4/2021	3/5/2021	89.90	-	-	-	-	89.90
All About Learning Press, Inc.	905409	1/4/2021	3/5/2021	26.80	-	-	-	-	26.80
All About Learning Press, Inc.	905410	1/4/2021	3/5/2021	144.90	-	-	-	-	144.90
All About Learning Press, Inc.	905474	1/8/2021	3/9/2021	315.85	-	-	-	-	315.85
All About Learning Press, Inc.	905488	1/11/2021	3/12/2021	208.75	-	-	-	-	208.75
All About Learning Press, Inc.	905570	1/20/2021	3/21/2021	208.75	-	-	-	-	208.75
All About Learning Press, Inc.	905771	2/3/2021	4/4/2021	159.90	-	-	-	-	159.90
All About Learning Press, Inc.	905784	2/3/2021	4/4/2021	179.85	-	-	-	-	179.85
All About Learning Press, Inc.	905836	2/8/2021	4/9/2021	119.80	-	-	-	-	119.80
All About Learning Press, Inc.	905837	2/8/2021	4/9/2021	159.90	-	-	-	-	159.90
All Star Gymnastics	412	2/4/2021	3/6/2021	150.00	-	-	-	-	150.00
All Star Gymnastics	413	2/9/2021	3/11/2021	111.00	-	-	-	-	111.00
Amazon Capital Services	1HHM-QGTM-47W1	7/14/2020	9/12/2020	(71.98)	-	-	-	-	(71.98)
Amazon Capital Services	1T34-3QMC-17XR	7/10/2020	9/8/2020	(277.78)	-	-	-	-	(277.78)
Amazon Capital Services	1V76-Y1VY-WRHQ	8/25/2020	10/24/2020	(48.80)	-	-	-	-	(48.80)
Amazon Capital Services	1XX9-J9J3-F7FH	7/10/2020	9/8/2020	(91.41)	-	-	-	-	(91.41)
Amy Walters	AW02282021	2/5/2021	3/7/2021	480.00	-	-	-	-	480.00
Ballet Rejoice School For The Arts	0590	2/16/2021	2/16/2021	349.86	-	-	-	-	349.86
Beautiful Feet Books, Inc.	13757	2/9/2021	3/11/2021	456.00	-	-	-	-	456.00
Beautiful Feet Books, Inc.	13777	2/12/2021	3/14/2021	98.15	-	-	-	-	98.15
Black Oak Therapy	46	6/9/2020	7/8/2020	50.00	-	-	-	-	50.00
Black Oak Therapy	64	1/21/2021	2/20/2021	250.00	-	-	-	-	250.00
Brave Writer, LLC	17559890	2/3/2021	2/3/2021	14.95	-	-	-	-	14.95
Bright Thinker	SINV2678	2/3/2021	3/5/2021	124.49	-	-	-	-	124.49
Celia Frazer	103	2/6/2021	3/8/2021	150.00	-	-	-	-	150.00
Celia Frazer	203	2/6/2021	3/8/2021	150.00	-	-	-	-	150.00
Charter Impact, Inc.	10250	2/24/2021	3/25/2021	216.66	-	-	-	-	216.66
Charter Impact, Inc.	PR021521	2/16/2021	2/16/2021	468.00	-	-	-	-	468.00
Chess At Three	2206	2/5/2021	3/7/2021	160.00	-	-	-	-	160.00
Chiung-Hwa Bryce	Aranas 2	2/9/2021	3/11/2021	400.00	-	-	-	-	400.00
E-Therapy LLC	17046	1/15/2021	2/14/2021	641.00	-	-	-	-	641.00
eat2explore	100889	2/3/2021	3/5/2021	104.80	-	-	-	-	104.80
eat2explore	100890	2/4/2021	3/6/2021	104.80	-	-	-	-	104.80
eat2explore	100894	2/9/2021	3/11/2021	104.80	-	-	-	-	104.80
Educational Development Corporation	DIR8655893	2/2/2021	3/4/2021	72.31	-	-	-	-	72.31
Foothill Taekwondo	FH-02-21	2/6/2021	3/8/2021	109.00	-	-	-	-	109.00
Foothill Taekwondo	GH-02-21	2/6/2021	3/8/2021	109.00	-	-	-	-	109.00
Foothill Taekwondo	JH-02-21	2/8/2021	3/10/2021	109.00	-	-	-	-	109.00
Forever Dance Lake Tahoe	44679	2/1/2021	2/1/2021	310.00	-	-	-	-	310.00
Forever Dance Lake Tahoe	45228	2/13/2021	2/13/2021	410.00	-	-	-	-	410.00
Gina Illingworth	34	2/15/2021	3/17/2021	60.00	-	-	-	-	60.00
Gina Illingworth	35	2/17/2021	3/19/2021	60.00	-	-	-	-	60.00

Clarksville Charter School

Accounts Payable Aging

February 28, 2021

Vendor Name	Invoice/Credit Number	Invoice Date	Date Due	Current	1 - 30 Days Past Due	31 - 60 Days Past Due	61 - 90 Days Past Due	Over 90 Days Past Due	Total
Gina Illingworth	36	2/17/2021	3/19/2021	60.00	-	-	-	-	60.00
Global Teletherapy	4381	1/7/2021	2/6/2021	18,375.00	-	-	-	-	18,375.00
Global Teletherapy	4493	2/7/2021	3/9/2021	25,407.10	-	-	-	-	25,407.10
Grace Hegy	Clarksville9	2/8/2021	3/10/2021	200.00	-	-	-	-	200.00
Hawkins School of Performing Arts	20002	2/11/2021	3/13/2021	400.00	-	-	-	-	400.00
Haynes Family of Programs	LAS399.1-05	1/14/2021	2/13/2021	660.00	-	-	-	-	660.00
Haynes Family of Programs	OT206.1-04	1/14/2021	2/13/2021	562.50	-	-	-	-	562.50
History Unboxed LLC	wc-9450HU	2/8/2021	3/10/2021	652.32	-	-	-	-	652.32
Home Science Tools	1097872A	2/4/2021	3/6/2021	79.69	-	-	-	-	79.69
Home Science Tools	1099357A	2/9/2021	3/11/2021	42.77	-	-	-	-	42.77
Home Science Tools	1099722A	2/11/2021	3/13/2021	55.60	-	-	-	-	55.60
Honest History Co	5450	2/11/2021	3/13/2021	119.72	-	-	-	-	119.72
Institute for Excellence in Writing	764091	2/11/2021	3/11/2021	301.85	-	-	-	-	301.85
Institute for Excellence in Writing	764575	2/11/2021	3/11/2021	58.55	-	-	-	-	58.55
Institute for Excellence in Writing	764577	2/11/2021	3/11/2021	58.55	-	-	-	-	58.55
Inversion Gym	1031	2/10/2021	3/12/2021	1,923.00	-	-	-	-	1,923.00
K3 Syncopation, LLC (Bach To Rock, Rocklin)	157	2/11/2021	3/13/2021	1,300.00	-	-	-	-	1,300.00
K3 Syncopation, LLC (Bach To Rock, Rocklin)	158	2/11/2021	3/13/2021	150.00	-	-	-	-	150.00
Kaizen Martial Arts Academy	1344CM	2/10/2021	3/12/2021	240.00	-	-	-	-	240.00
Kaizen Martial Arts Academy	1345CM	2/10/2021	3/12/2021	240.00	-	-	-	-	240.00
Karina Sheremet	1947	2/4/2021	3/6/2021	280.00	-	-	-	-	280.00
KiwiCo, Inc.	JAN-21-CLARK-2	1/31/2021	3/17/2021	3,805.44	-	-	-	-	3,805.44
Kovar's Laguna	EsaiCer2021	2/16/2021	3/18/2021	450.00	-	-	-	-	450.00
Lakeshore	2010551220	12/17/2020	1/16/2021	101.09	-	-	-	-	101.09
Learning Without Tears	INV100688	12/16/2020	1/15/2021	40.78	-	-	-	-	40.78
Learning Without Tears	INV75608	5/29/2020	6/28/2020	35.76	-	-	-	-	35.76
Learning Without Tears	INV87339	8/26/2020	9/25/2020	113.02	-	-	-	-	113.02
Learning Without Tears	INV94337	10/2/2020	11/1/2020	69.77	-	-	-	-	69.77
Learning Without Tears	INV94574	10/5/2020	11/4/2020	41.19	-	-	-	-	41.19
LEGO Education	1190450272	1/7/2021	3/8/2021	498.61	-	-	-	-	498.61
Leighton Dance Project, Inc.	201124	2/10/2021	2/10/2021	70.00	-	-	-	-	70.00
Lotus Educational Services, Inc.	1751	1/19/2021	2/18/2021	719.38	-	-	-	-	719.38
Margie Hartung	2820CCS	2/8/2021	3/10/2021	1,940.00	-	-	-	-	1,940.00
Math-U-See Inc	0687070-IN	1/15/2021	3/16/2021	119.00	-	-	-	-	119.00
Math-U-See Inc	0687071-IN	1/15/2021	3/16/2021	71.00	-	-	-	-	71.00
Math-U-See Inc	0689372-IN	1/27/2021	3/28/2021	119.00	-	-	-	-	119.00
Math-U-See Inc	0689774-IN	1/28/2021	3/29/2021	70.00	-	-	-	-	70.00
Math-U-See Inc	0689775-IN	1/28/2021	3/29/2021	58.00	-	-	-	-	58.00
Math-U-See Inc	0689777-IN	1/28/2021	3/29/2021	99.00	-	-	-	-	99.00
Math-U-See Inc	0691043-IN	2/3/2021	4/3/2021	112.00	-	-	-	-	112.00
Math-U-See Inc	0692261-IN	2/10/2021	4/11/2021	22.00	-	-	-	-	22.00
McColgan & Associates Inc.	4000	1/10/2021	1/10/2021	3,967.25	-	-	-	-	3,967.25
MEL Science U.S., LLC	KV2021021013	2/10/2021	3/12/2021	209.40	-	-	-	-	209.40
MEL Science U.S., LLC	TH2021021711	2/17/2021	3/19/2021	209.40	-	-	-	-	209.40
Michelle Jones	128	2/16/2021	3/18/2021	130.00	-	-	-	-	130.00
Michelle Jones	129	2/16/2021	3/18/2021	130.00	-	-	-	-	130.00
Michelle Jones	130	2/16/2021	3/18/2021	130.00	-	-	-	-	130.00

Clarksville Charter School

Accounts Payable Aging

February 28, 2021

Vendor Name	Invoice/Credit Number	Invoice Date	Date Due	Current	1 - 30 Days Past Due	31 - 60 Days Past Due	61 - 90 Days Past Due	Over 90 Days Past Due	Total
Musical Mayhem Productions, Inc.	2064	2/9/2021	3/3/2021	299.00	-	-	-	-	299.00
Northern California Children's Chorus	531	2/12/2021	3/14/2021	122.78	-	-	-	-	122.78
Oak Meadow Inc.	100683	4/30/2020	5/29/2020	325.00	-	-	-	-	325.00
Oak Meadow Inc.	109432	9/18/2020	10/17/2020	66.00	-	-	-	-	66.00
Oak Meadow Inc.	109601	9/21/2020	10/20/2020	146.10	-	-	-	-	146.10
Oak Meadow Inc.	109991	9/23/2020	10/22/2020	535.00	-	-	-	-	535.00
Oak Meadow Inc.	110409	9/25/2020	10/24/2020	171.00	-	-	-	-	171.00
Oak Meadow Inc.	111041	10/1/2020	10/31/2020	135.00	-	-	-	-	135.00
Oak Meadow Inc.	112177	10/8/2020	11/7/2020	10.00	-	-	-	-	10.00
Oak Meadow Inc.	113515	10/19/2020	11/18/2020	48.00	-	-	-	-	48.00
Outside the Box Creation	3146	2/8/2021	3/10/2021	305.70	-	-	-	-	305.70
Paula Vance	CH9018	2/8/2021	3/10/2021	200.00	-	-	-	-	200.00
Pearson Education Inc.	6001561057	1/22/2020	2/21/2020	(189.95)	-	-	-	-	(189.95)
Provenance	4453	2/2/2021	3/4/2021	2,380.00	-	-	-	-	2,380.00
Provenance	4470	2/4/2021	3/6/2021	550.00	-	-	-	-	550.00
Provenance	4486	2/11/2021	3/13/2021	4,600.00	-	-	-	-	4,600.00
R&D Educational Systems Inc. Sombrero Time	12379	2/1/2021	3/3/2021	538.00	-	-	-	-	538.00
R&D Educational Systems Inc. Sombrero Time	12380	2/1/2021	3/3/2021	960.00	-	-	-	-	960.00
R&D Educational Systems Inc. Sombrero Time	12382	2/1/2021	3/3/2021	149.00	-	-	-	-	149.00
Rainbow Resource Center	3290724	2/1/2021	3/3/2021	274.21	-	-	-	-	274.21
Rainbow Resource Center	3299918	2/1/2021	3/3/2021	210.09	-	-	-	-	210.09
Rainbow Resource Center	3299919	2/1/2021	3/3/2021	87.97	-	-	-	-	87.97
Rainbow Resource Center	3300208	2/1/2021	3/3/2021	32.23	-	-	-	-	32.23
Rainbow Resource Center	3300209	2/1/2021	3/3/2021	35.33	-	-	-	-	35.33
Rainbow Resource Center	3300661	2/1/2021	3/3/2021	38.55	-	-	-	-	38.55
Rainbow Resource Center	3300748	2/1/2021	3/3/2021	34.74	-	-	-	-	34.74
Rainbow Resource Center	3300750	2/1/2021	3/3/2021	45.95	-	-	-	-	45.95
Rainbow Resource Center	3303619	2/3/2021	3/5/2021	28.90	-	-	-	-	28.90
Rainbow Resource Center	3303662	2/3/2021	3/5/2021	28.90	-	-	-	-	28.90
Rainbow Resource Center	3303677	2/3/2021	3/5/2021	39.62	-	-	-	-	39.62
Rainbow Resource Center	3304653	2/4/2021	3/6/2021	33.36	-	-	-	-	33.36
Rainbow Resource Center	3304874	2/4/2021	3/6/2021	108.91	-	-	-	-	108.91
Rainbow Resource Center	3305035	2/4/2021	3/6/2021	95.10	-	-	-	-	95.10
Rainbow Resource Center	3306409	2/8/2021	3/10/2021	9.06	-	-	-	-	9.06
Rainbow Resource Center	3308397	2/9/2021	3/11/2021	25.14	-	-	-	-	25.14
Rainbow Resource Center	3308910	2/9/2021	3/11/2021	74.79	-	-	-	-	74.79
Rainbow Resource Center	3311068	2/11/2021	3/13/2021	166.50	-	-	-	-	166.50
Rainbow Resource Center	3311657	2/11/2021	3/13/2021	55.12	-	-	-	-	55.12
Rainbow Resource Center	3311663	2/11/2021	3/13/2021	28.68	-	-	-	-	28.68
Rainbow Resource Center	3311718	2/11/2021	3/13/2021	35.92	-	-	-	-	35.92
Rainbow Resource Center	3315653	2/17/2021	3/19/2021	25.20	-	-	-	-	25.20
Sacramento Ballet Association	2021-215-JD	2/12/2021	3/14/2021	95.00	-	-	-	-	95.00
Sacramento Ballet Association	2021-216-CD	2/12/2021	3/14/2021	175.00	-	-	-	-	175.00
Sacramento Ballet Association	2021-217-JD	2/12/2021	3/14/2021	95.00	-	-	-	-	95.00
Sacramento Ballet Association	2021-218-CD	2/12/2021	3/14/2021	175.00	-	-	-	-	175.00
Sacramento Spark	109	2/15/2021	2/15/2021	840.00	-	-	-	-	840.00
Satori Management, Inc	85887-C007-CLA	2/17/2021	2/17/2021	185.00	-	-	-	-	185.00

Clarksville Charter School

Accounts Payable Aging

February 28, 2021

Vendor Name	Invoice/Credit Number	Invoice Date	Date Due	Current	1 - 30 Days Past Due	31 - 60 Days Past Due	61 - 90 Days Past Due	Over 90 Days Past Due	Total
Satori Management, Inc	85887-C008-CLA	2/17/2021	2/17/2021	185.00	-	-	-	-	185.00
School of Rock Elk Grove & Roseville	1062	2/2/2021	3/4/2021	500.00	-	-	-	-	500.00
School of Rock Elk Grove & Roseville	1074	2/7/2021	3/9/2021	238.00	-	-	-	-	238.00
School of Rock Elk Grove & Roseville	1088	2/9/2021	3/11/2021	195.00	-	-	-	-	195.00
School Pathways, LLC	140-INV0740	1/31/2021	3/2/2021	4,550.19	-	-	-	-	4,550.19
Scott J. Budnik	33	2/1/2021	3/3/2021	65.00	-	-	-	-	65.00
Shankari Arcot	2	2/10/2021	3/12/2021	564.00	-	-	-	-	564.00
Souza's Tutoring Tools	1200	2/3/2021	3/5/2021	3,945.00	-	-	-	-	3,945.00
Specialized Therapy Services, Inc	CVCS01-1220	12/31/2020	2/9/2021	987.50	-	-	-	-	987.50
StaffRehab LLC	M0069512	1/15/2021	2/14/2021	40.50	-	-	-	-	40.50
Stephanie Strong	17	2/13/2021	3/15/2021	480.00	-	-	-	-	480.00
Stephanie Strong	18	2/13/2021	3/15/2021	480.00	-	-	-	-	480.00
Summit Martial Arts and Leadership Academy	011-012021	2/6/2021	3/8/2021	149.00	-	-	-	-	149.00
Tahoe Speech Therapy LLC	P1051-12	1/10/2021	2/9/2021	385.00	-	-	-	-	385.00
Teacher Synergy, LLC	144197476	2/11/2021	3/4/2021	203.66	-	-	-	-	203.66
Teaching Textbooks	33619	2/10/2021	3/12/2021	135.40	-	-	-	-	135.40
Teaching Textbooks	33620	2/10/2021	3/12/2021	75.45	-	-	-	-	75.45
Teaching Textbooks	33621	2/10/2021	3/12/2021	135.40	-	-	-	-	135.40
The Dance Academy	95655-C001	2/4/2021	3/6/2021	45.00	-	-	-	-	45.00
Think Outside, LLC	20726	2/3/2021	3/5/2021	255.65	-	-	-	-	255.65
Thomas Purvance	0010	2/1/2021	3/3/2021	1,120.00	-	-	-	-	1,120.00
Thomas Purvance	0011	2/15/2021	3/17/2021	270.00	-	-	-	-	270.00
Thomas Purvance	0012	2/15/2021	3/17/2021	280.00	-	-	-	-	280.00
Timberdoodle.com	354040	1/14/2021	3/15/2021	837.28	-	-	-	-	837.28
Timberdoodle.com	355373	2/10/2021	4/11/2021	110.05	-	-	-	-	110.05
Vanessa Shaw	14	2/16/2021	3/18/2021	580.00	-	-	-	-	580.00
Verizon Wireless	9869697929	12/22/2020	1/14/2021	1,140.54	-	-	-	-	1,140.54
Verizon Wireless	98718101961	1/22/2021	2/14/2021	1,141.36	-	-	-	-	1,141.36
Well-Trained Mind Academy	761	2/15/2021	2/15/2021	360.00	-	-	-	-	360.00
Well-Trained Mind Academy	762	2/15/2021	2/15/2021	360.00	-	-	-	-	360.00
Well-Trained Mind Academy	771	2/17/2021	2/17/2021	735.00	-	-	-	-	735.00
Total Outstanding Payables in February				\$ 106,926	\$ -	\$ -	\$ -	\$ -	\$ 106,926

Clarksville Charter School

Due (To)/From All Inspire Charter School Locations

For the period ended February 28, 2021

Account	Account Description	Account Balance
9180	Due (to)/from Inspire Charter Service	\$ <u>780,413.48</u>
Total Due (to)/from Balance		\$ <u>780,413</u>

Coversheet

Budget Considerations (p. 56-58)

Section: II. Finance
Item: B. Budget Considerations (p. 56-58)
Purpose: Vote
Submitted by:
Related Material: 21.02 - Budget Consideration - Clarksville.pdf

BACKGROUND:
Jenell Sherman presents Budget Considerations.

RECOMMENDATION:
Recommended for Board approval.

Clarksville– Budget Consideration

Current roll-over Balance: \$1,008,335

	CY Forecast	CY Funding Release
Expenses		
Certificated Salaries	\$ 4,725,179	\$ 4,725,179
Classified Salaries	492,408	492,408
Benefits	1,510,002	1,510,002
Books and Supplies	1,398,882	2,407,217
Subagreement Services	2,047,150	2,047,150
Operations	144,293	144,293
Facilities	66,904	66,904
Professional Services	1,167,308	1,167,308
Depreciation	2,168	2,168
Interest	192,159	192,159
Total Expenses	\$ 11,746,454	\$ 12,754,789

	CY Forecast	CY Funding Release
Total Surplus(Deficit)	\$ 270,218	\$ (738,117)
Beginning Fund Balance	288,347	288,347
Ending Fund Balance	\$ 558,565	\$ (449,770)
<i>As a % of Annual Expenses</i>	4.8%	-3.5%

Summary Consideration

- Releasing roll-over student funds creates a projected year-end deficit and negative fund balance.

Coversheet

Growth Projections 2021-2022 (p. 59-60)

Section: II. Finance
Item: D. Growth Projections 2021-2022 (p. 59-60)
Purpose: Vote
Submitted by:
Related Material: Enrollment Growth Projection CCS.png

BACKGROUND:
Jenell Sherman presents Enrollment Growth Projections for 2021-2022 school year.



Enrollment Growth Projection

Current 1182

Projected 1635

Clarksville Charter School

Coversheet

Discussion and Potential Action on the 2019-2020 Audit Report (p. 61)

Section: II. Finance
Item: E. Discussion and Potential Action on the 2019-2020 Audit Report (p. 61)
Purpose:
Submitted by:

BACKGROUND:
Jenell Sherman presents 2019-2020 Audit Report.

Coversheet

Local Control and Accountability Plan (LCAP) & Timeline (p. 62-74)

Section: III. Academic Excellence
Item: A. Local Control and Accountability Plan (LCAP) & Timeline (p. 62-74)
Purpose: Discuss
Submitted by:
Related Material: CCS Board Presentation LCAP 2021-2022.pptx

BACKGROUND:
Darcy Belleza presents LCAP Plan and Timeline.

Local Control Accountability Plan



2021-2024

Clarksville Charter School
March 25, 2021

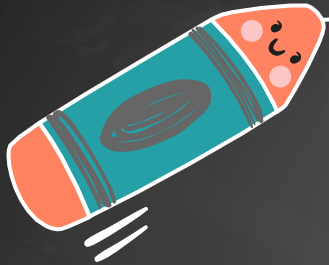


- Comprehensive Strategic Planning
- Meaningful Stakeholder Engagement
- Accountability and Compliance



LCAP Development Process

Local Control and Accountability Plan (LCAP)



- Not a budget (does not capture all funds)
- Strategic 3-year Plan that addresses LCFF and local priorities
- Focus is on processes and strategies, not on dollars
- Charter schools may use for accountability purposes
- Transparency

Foundation for LCAP

Priority Groups:

- ELs, Foster Youth, Homeless, Students with Disabilities



Basic Services
(e.g., teacher
credentials)



Implementation
of CA Academic
Standards



Parent
Engagement



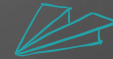
Access to Broad
Course of Study
(e.g., AP)



Student
Achievement
(more than test
scores)



Student
Engagement
(e.g.,
Graduation)



School Climate
(e.g.,
suspensions)



Outcomes in
Broad Course of
Study (e.g., CTE
pathways)



Conditions of Learning



Conditions for Learning			
	State	Local	Dashboard
State Priority 1. Basic			
Teachers: Fully credentialed and appropriately assigned			
Standards-aligned instructional materials for every student			
School facilities in "good repair" per CDE's Facility Inspection Tool (FIT)			
State Priority 2. Implementation of State Standards			
Implementation of Common Core (CCSS) for all students, including how English Learners will access the CCSS and ELD standards			
State Priority 7. Course Access			
Students have access and are enrolled in a broad course of study (Social Science, Science, Health, Physical Education, Visual/Performing Arts, World Language)			



Pupil Outcomes



Pupil Outcomes			
State Priority 4. Pupil Achievement	State	Local	Dashboard
State CAASPP English Language Arts			
State CAASPP Mathematics			
State CST Science			
State CAA			
% of pupils who have successfully completed A-G requirements or CTE pathways			
% of English learners who demonstrate progress in English proficiency on ELPAC			
English learner Reclassification Rate			
% of pupils who passed AP exams with the score of 3 or higher			
Pupils classified as "prepared for college" by the EAP (ELA/Math CAASPP score of 3 or higher)			
State Priority 8. Other Pupil Outcomes	State	Local	Dashboard
Outcomes for subjects listed in course access			



Engagement



Engagement			
State Priority 3. Parent Involvement			
	State	Local	Dashboard
Parent input in decision-making			
Parental participation in programs for Unduplicated Pupils			
State Priority 5. Pupil Engagement			
	State	Local	Dashboard
Attendance rates			
Chronic Absenteeism rate			
Middle school dropout rates			
High school dropout rates			
High school graduation rates			
State Priority 6. School Climate			
	State	Local	Dashboard
Suspension rates			
Expulsion rates			
Surveys measuring safety and connectedness			



LCAP Goals

Goal 1

Continue to develop plans and utilize data to strengthen student achievement for all students (general education, foster youth, homeless, English learners, and students with disabilities).

- Professional Development for staff and families to support all students.
- Hire and maintain Certificated Staff to create and maintain programs focused on instructional support and in core academic and enrichment areas
- Provide curriculum (print and online) to support student's educational needs

Goal 2

Promote a safe, healthy and engaged learning environment for all.

- Hire and maintain certificated staff to provide direct instruction, programs and support for unduplicated students and students with disabilities
- Provide dedicated time with HS counselors and Social Emotional Opportunities/Curriculum
- Fund Foster Youth and Family Liaison position to address the needs of unduplicated students
- Fund newly integrated communication for school

Goal 3




Increase the number of students who are High School, College, Career and life ready.

- Enhance Course offerings in College and Career Indicators
- Support and provide Professional Development focused on goal



Academic Performance

Due to the COVID-19 pandemic, state law has suspended the reporting of state and local indicators on the 2020 Dashboard. However, available data that would have been included in the Dashboard are reported on the Department's website if they were determined to be valid and reliable.



Academic Indicator: Grades 3-8 and Grade 11

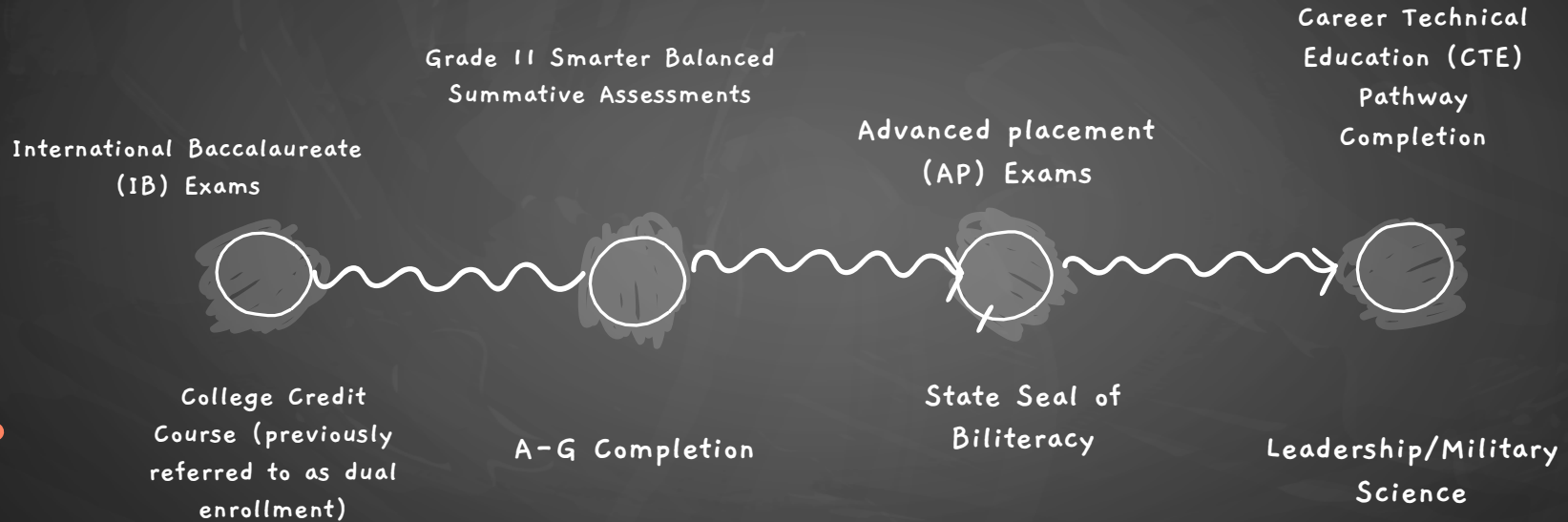
Content areas:

English Language Arts

Mathematics

Note: California Science Test (CAST) is not used.

Current CCI Measures (2021-2022)





College and Career Indicator for 19-20 School Year

- CDE released two indicators for the 19-20 Dashboard

CCI Level	All Students
Percentage Prepared	12.5%
Percentage Approaching Prepared	21.4%
Percentage Not Prepared	66.1%





Questions?
Feedback and
surveys coming
soon for all
stakeholders.

Coversheet

School Pathways Bids (p. 75-77)

Section: IV. Operations
Item: A. School Pathways Bids (p. 75-77)
Purpose: Vote
Submitted by:
Related Material: Clarksville SP Quote Form (2.22.2021).pdf

BACKGROUND:
Jenell Sherman presents School Pathways bids.



School Pathways, LLC
181 Commercial Street, Portola, CA 96122
Phone: 866-200-6936

School Pathways Quote Form

Customer Name: Clarksville Charter
Customer Contact Name: Julie Haycock
Contact Email: Julie.haycock@lakeviewcharter.org
Customer Contact Phone: 916-660-2924
Proposal Issue Date: 2/22/2021
Proposal Expiration Date: 3/21/2021

Enrollment: 1171
Customer Contact Title: Co-Director
Number of Schools: 1
Contract Term: 12 months
Start Date: 7/1/2021
End Date: 6/30/2022

Product Subscriptions	Quantity	Unit	Annual Subscription Fee
SIS	1171	Students	\$7,500.00
PLS	1171	Students	\$56,208.00
SPArchiving	1171	Students	\$7,728.60
RegOnline	1171	Students	\$2,049.25
Renaissance Learning Bridge	1	School	\$500.00
National Student Clearinghouse Bridge	1	School	\$500.00
PLSIS Oversight	1171	Students	\$1754.85
SEIS Export Bridge	1	School	\$500.00
SEDS Import Bridge	1	School	\$500.00

Total Annual Subscription Fees: \$77,240.70

Professional Services & Custom Development	Quantity	Unit	One-Time Training, Services, Development Fee
SEIS Export Bridge set up	1	School	\$350.00
SEDS Import Bridge set up	1	School	\$350.00

Total One-Time Setup and Training Fees: \$700.00

Subscription, Services, Custom Development Totals:

Product/Service	Total Quote	Total Discount	Annual Term Total after Discount
Product Subscriptions	\$77,240.70	\$9,268.88	\$67,971.82
SEIS/SEDS Bridge set up	\$700.00		\$700.00
Total Quote			\$68,671.82



School Pathways, LLC
181 Commercial Street, Portola, CA 96122
Phone: 866-200-6936

Subscription fees charged will be subject to an annual price uplift. Annual Subscription fees are invoiced at the then current rates and Student Enrollment per terms of the Master Services Agreement. Any applicable state sales tax has not been added to this quote.

All invoices shall be paid before or on the due date set forth on invoice.

By execution of this quote, School Pathways subscriptions and/or services listed herein shall be provided to the Customer subject to the terms and conditions found at: link to www.schoolpathways.com/msa

IN WITNESS WHEREOF, the parties hereto have executed this Order Form on the dates indicated below.

Clarksville Charter

School Pathways, LLC.

By:

By:

Printed Name:

Printed Name:

Title:

Title:

Date:

Date: