



PALISADES

CHARTER HIGH SCHOOL

Executive Director/Principal Report Board of Trustees Meeting November 15, 2022

Our mission: PCHS will empower our diverse student population to make positive contributions to the global community by dedicating our resources to ensure educational excellence, civic responsibility, and personal growth.

Schoolwide Goal - Academic Achievement/Professional Development

Professional Development highlights from First Semester:

- **PLC Days** - English 9, English 10, Biology
- **Conferences** – National Conference for Teachers of Math and ACTFL Annual Convention and World Languages Expo
- **Counselors** - UC High School Counselor Conference
- **College Center** - National Association for College Admissions Counseling

Teacher training:

- New Teacher Meetings (monthly)
- Promethean Board Training
- LACOE Assessment Training
- CTE certifications and training
- Ethnic Studies Course Curriculum Development

Management Training:

- Administrative/Leadership Series
- ACSA Leadership Summit
- CTE Summit
- Infinite Campus University Training (virtual)

Academic Snapshots and Highlights:

Special Education: [Flexibility](#), [IEP meetings](#), [Professional Development](#)

English: [Assessments](#), [PLC planning](#), [Pod Design](#), [Honors/CP Design](#)

Math: [Special Education Support](#), [AMC test](#), [Honors Design](#)

Physical Fitness: [Progress 1= 97% Pass rate!](#)

Tech: [Career Tech Ed](#), [Makerspace](#), [Computer Classes](#)

History: [Onboarding](#), [Teambuilding](#), [Ethnic Studies Professional Development](#), [New Courses](#)

Science: [New Biology Curriculum and Professional Development](#), [CAST data analysis](#)

World Language: [Professional Development](#), [Progress 1 Grades](#), [Flexibility](#), [Honors/CP Cross Curricular Best Practice Sharing](#)

VAPA: [Mama Mia!](#) [Harvest Festival](#), [Yearbook](#), [Marching Band](#), [Competition](#), [Dance Team](#), [Pali Academy Guitar](#), [These Shining Lives](#), [DTASC](#)

Counseling: [Professional Development](#), [Improved and Revised Student Request Process Updates/Timeline](#) (Shared with Department Chairs)

Virtual Academy: [Increased Participation](#), [UC Scout Curriculum](#), [Information Meeting](#)

Pali Academy: [12th Grade Seniors Recovering Credits!!!](#), [a–g eligibility](#), [Music Appreciation](#)



Schoolwide Goal - Academic Achievement/Organizational Excellence and Communication

Datalink Networks updates:

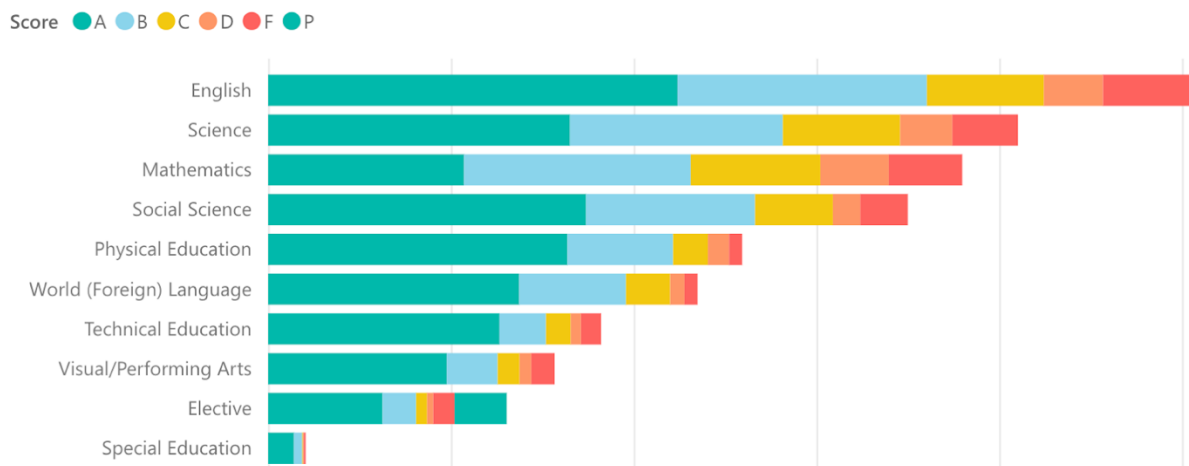
PCHS has contracted with Datalink Networks to address schoolwide educational technology needs and to develop solutions for related challenges. The Datalink Networks Ed Tech Coordinator in collaboration with the Pali Administrative Team identified areas of primary focus:

- 1) Provide a strong, rigorous academic program for all students - especially identified subgroups (African American, Hispanic, SPED), and
- 2) Develop strong 2-way communication practices.

Pali administrators have begun the use templates and procedures for meetings and consolidating important data for shared use. A next step is to identify priority PD areas for software, instructional best practices, technology, and use of assessment platforms. Consolidating grading scales to ensure clarity for students and families and data passback between Schoology and IC will be discussed with academic departments and PLCs. We have identified the need to streamline calendaring systems by implementing an automated process for scheduling, communicating events, and ensuring alignment with all calendars. To develop strong 2-way communication practices we are exploring consolidated, one-stop systems and plan to pilot potential options with small test groups at the start of second semester.

Schoolwide Goal - Academic Achievement

Current Grade Distribution by Department (Note: This chart represents a snapshot leading into First Semester Progress Report 2. Updated P2 grades will be posted the week of 11/14-18.)





PALISADES

CHARTER HIGH SCHOOL

Academic Intervention at PCHS

PCHS provides a network of supports outside of the classroom:

1. Two interventionists dedicated to supporting highest needs students
2. Study Center with free tutoring
3. 504 Coordinator
4. Math Paraprofessionals
5. Peer Mentors and Peer Tutors
6. Student Support Teams and Language Acquisition Teams
7. Study Skills Classes
8. Literacy Classes
9. Pali Academy and credit recovery programs
10. Mental Health Support Team

Classroom strategies implemented by PCHS teachers include

1. Prioritizing curriculum with a focus on essential material
2. Taking time to reteach
3. Assessment retakes
4. Use of alternative assessments
5. Parent outreach: phone calls and emails
6. Menu options for students to demonstrate knowledge
7. Optional asynchronous learning packets
8. Consistent checking for understanding
9. Providing space for student questions and peer interactions
10. PLC meetings focused on intervention strategies

Schoolwide Goal – Communication/Organizational Excellence

Continuous Improvement - Department Studies

PCHS is continuing our study of departments to better understand staffing and organizational needs. Two recently retired educators with a combined 76 years of service in schools are consulting with Pali for this project. The consulting team is taking a fresh look at how each department works, what areas are working well, what areas need to be addressed to better meet the department's needs and/or the needs of the students and families as the landscape has changed in this "post-COVID" time. The consultants conduct confidential interviews with department members and supervisors to provide a detailed report and recommendations. Counseling/Guidance and Admissions/Attendance Departments have participated in the process with the Special Education Department review beginning in November. The individual department reports will be used to develop a comprehensive, schoolwide plan to be shared with the Board of Trustees and school community.



PALISADES

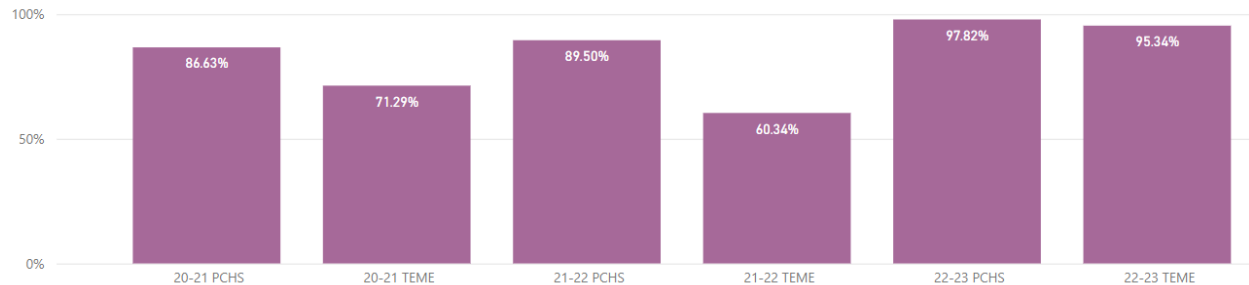
CHARTER HIGH SCHOOL

Schoolwide Goal – Communication/Organizational Excellence

Attendance Data: Current Enrollment 2952

Average Daily Attendance (approximate attendance calculation) 94.36%

Average of ADA by calendar



Steps PCHS is taking to improve student attendance:

- Monitoring unexcused absences of more than 30 minutes and ensuring that parents/guardians are notified when their student becomes classified as “truant”.
- Stressing the importance of verifying attendance and bringing in notes; formal notification of unverified absences (3, 5, 7, 9).
- Contacting parents/guardians via Robocall/IC about student absences.
- Conferencing with students who have persistent tardiness or attendance problems.
- Personalizing relationships between students and Attendance Office personnel; staff are making individual contact with chronic absentees daily.
- Working to address the problem of chronic absenteeism, even when the absences have been excused through student and parent outreach.

Recruitment for 2023-24

The application for the 2023-2024 school year is open. All prospective families who are interested in their student(s) attending PCHS for the 2023-2024 school year must apply by Tuesday, February 28, 2023. There are no exceptions or extensions available once the date has passed. Future Dolphins are currently being recruited for the 2023-2024 school year through campus visits made by leaders from ASB and Pali Ambassadors. Pali High campus tours are held every other week. Dates for second semester tours will be posted on GoFan.com for sign-up soon.




PALISADES

CHARTER HIGH SCHOOL




PALISADES CHARTER HIGH SCHOOL



THIS IS WHERE IT STARTS.

Accepting applications for the 2023-2024 school year.
Last Day to Apply -- Tuesday, February 28, 2023



Visit go.palihigh.org/admissions for more information!
*ALL prospective families MUST apply.

Schoolwide Goals – Communication, Diversity, and Socio-emotional Well-Being

Palisades Charter High School joins Los Angeles County Office of Education in commemorating **LA's United vs Hate Week on November 13-19, 2022**. Creating inclusion and equity are vital to building healthy and resilient communities. This week of action is designed to raise awareness about the dangers of hate and the need for respect and civil discourse. We will share information about actions students and can take to build stronger connections with peers, staff, civic leaders, and businesses to create an inclusive and accepting PCHS and Los Angeles. For more information visit UnitedAgainstHateWeek.org.

Pali Stands Against Hate Week Events - Campus Unification and Advocacy Room U109

Monday, November 14 at Lunch - How to be an Upstander

Tuesday, November 15 at Lunch - How to be an Ally

Wednesday, November 16 at Lunch - Race and Racism

Thursday, November 17 - Stand Right in Blue and White and a Symbol of Peace or Allyship (Spirit Day)



PALISADES

CHARTER HIGH SCHOOL

Schoolwide Goal - Academic Achievement, Communication, Diversity, Finance, Student/Staff Socio-emotional well-being

2023 California Charter School Association Conference – Monday, March 13 through Thursday, March 16 at the Sacramento Convention Center

This annual event connects charter school leaders and teachers from across the state and country. Breakout sessions are opportunities for attendee learning and professional development via presentations or small group discussions presented by a subject matter expert. Breakouts are categorized into four areas of interest:

- Advocate (authorization and renewal)
- Student success (learning models, instructional practices, special education, equitable student culture)
- Operational integrity (communications and marketing, facilities, funding, governance, human resources, legal, physical and online safety)
- Strategic leadership (data driven leadership, staff development, staff culture).