

2021-2024
LOCAL CONTROL &
ACCOUNTABILITY PLAN
(LCAP)

June 2021



The Local Control & Accountability Plan (LCAP)

All school districts must adopt a Local Control & Accountability Plan (LCAP), a 3-year plan for how we will use state funds to serve all students (2021-2024).



Each district's LCAP must include the following:

- ✓ Goals
- ✓ Actions
- ✓ Related expenditures



LCAPs must address the 8 State Priorities*:

1. Basic Services
2. Implementation of standards
3. Parental engagement
4. Student achievement
5. Student engagement
6. School climate
7. Access to courses
8. Other student outcomes



LCAPs must include services that target each major student subgroup, including:

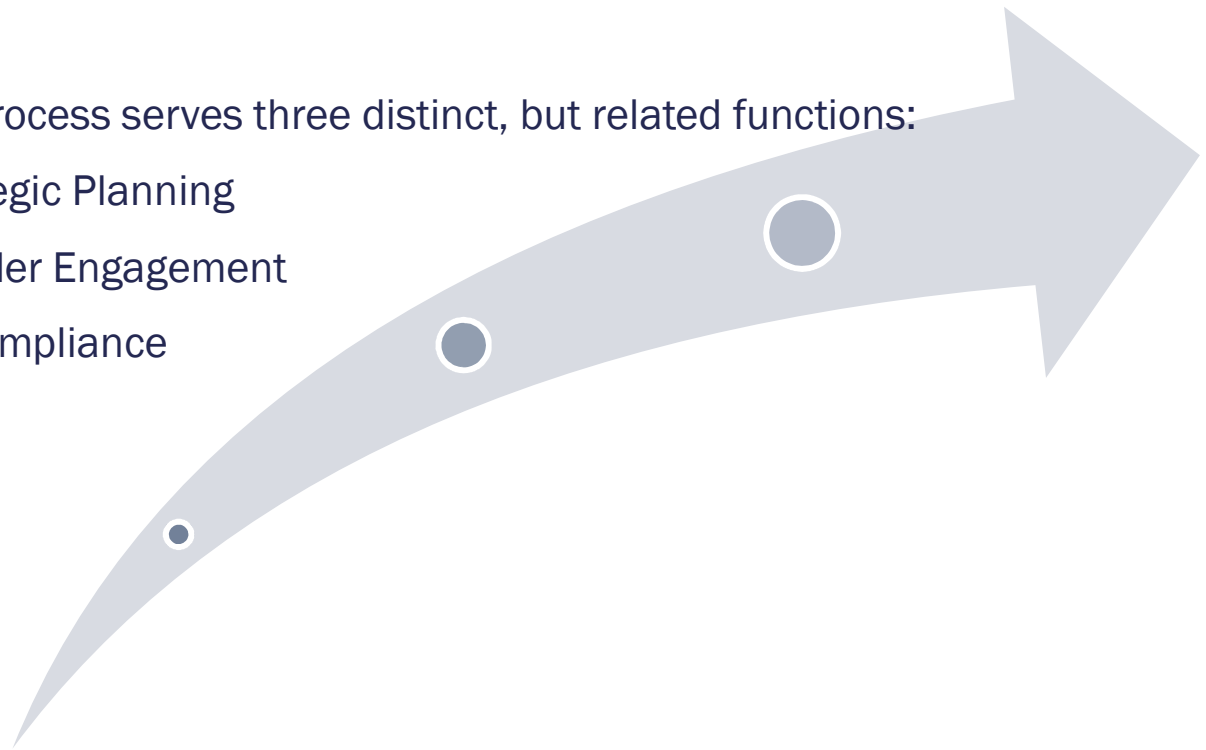
- ✓ Racial/ethnic subgroups
- ✓ Low-income students
- ✓ English learners
- ✓ Students with disabilities
- ✓ Foster youth
- ✓ Homeless youth

* For county offices of education there are 2 additional priorities: (9) Instruction for Expelled Youth and (10) Foster Youth Services

Functions of the LCAP

The LCAP development process serves three distinct, but related functions:

- Comprehensive Strategic Planning
- Meaningful Stakeholder Engagement
- Accountability and Compliance





Sections of the LCAP

- Annual Update and Instructions
 - *2019-2020 LCAP annual update*
 - *2020-2021 LCP annual update*
- Plan Summary
- Stakeholder Engagement
- Goals and Actions
- Increased or Improved Services for Foster Youth, English Learners, and Low-Income Students
- Expenditure Tables
- Budget Overview For Parents

Prioritizing LCAP Goals/Priorities

- Goals/priorities need to be data-driven and require stakeholder input
- In the absence of state and local indicators within the California School Dashboard (Dashboard), LEAs will need to use available state/local data and stakeholder input.
- In order to support prioritization of goals, the LCAP template provides LEAs with the option of developing three different kinds of goals:
 1. *Focus Goal*
 2. *Broad Goal*
 3. *Maintenance of Progress Goal*

2021-2024 LCAP GOALS

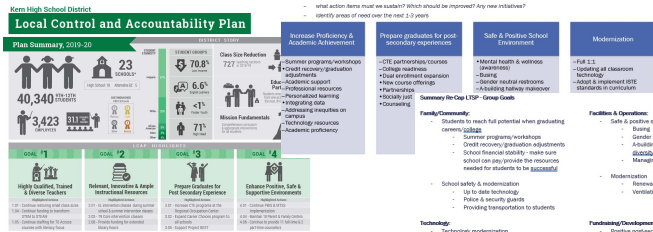


2021-2024 LCAP Goals

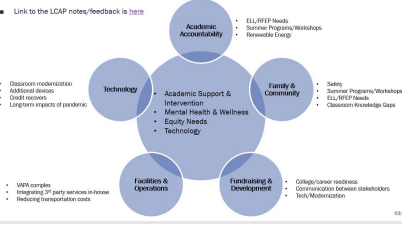
Over the past few months, our stakeholder have provided input to develop our 4 new LCAP goals

Identifying Action Items

- As a reviewer, action items need to support each LCAP goal and should have metrics assigned to track performance.
- The action items below were drawn from prior LCAP meeting feedback.
- Reflect:
 - What action items must we submit? Which should be improved? Any new initiatives?
 - Identify areas of responsibility for next 3-5 years.



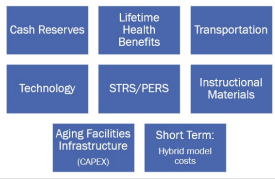
Feb LTSP: Preliminary LCAP Goal Development



- Academic Achievement & Innovation:**
 - Renewable energy
 - LED lighting
 - Water conservation
 - Energy audits
 - Smart thermostats
 - Energy-efficient appliances
 - Green building materials
 - Water-saving fixtures
 - Energy-efficient windows
 - Green roofs
 - Permeable pavement
 - Native landscaping
 - Water recycling systems
 - Energy storage systems
 - Smart meters
 - Energy management systems
 - Green procurement
 - Carbon footprint tracking
 - Green building certification
 - Energy audits
 - Energy-efficient lighting
 - Energy-efficient HVAC systems
 - Energy-efficient refrigeration
 - Energy-efficient motors
 - Energy-efficient elevators
 - Energy-efficient doors
 - Energy-efficient windows
 - Energy-efficient roofs
 - Energy-efficient foundations
 - Energy-efficient walls
 - Energy-efficient floors
 - Energy-efficient ceilings
 - Energy-efficient lighting
 - Energy-efficient HVAC systems
 - Energy-efficient refrigeration
 - Energy-efficient motors
 - Energy-efficient elevators
 - Energy-efficient doors
 - Energy-efficient windows
 - Energy-efficient roofs
 - Energy-efficient foundations
 - Energy-efficient walls
 - Energy-efficient floors
 - Energy-efficient ceilings
- Technology:**
 - Renewable energy
 - LED lighting
 - Water conservation
 - Energy audits
 - Smart thermostats
 - Energy-efficient appliances
 - Green building materials
 - Water-saving fixtures
 - Energy-efficient windows
 - Green roofs
 - Permeable pavement
 - Native landscaping
 - Water recycling systems
 - Energy storage systems
 - Smart meters
 - Energy management systems
 - Green procurement
 - Carbon footprint tracking
 - Green building certification
 - Energy audits
 - Energy-efficient lighting
 - Energy-efficient HVAC systems
 - Energy-efficient refrigeration
 - Energy-efficient motors
 - Energy-efficient elevators
 - Energy-efficient doors
 - Energy-efficient windows
 - Energy-efficient roofs
 - Energy-efficient foundations
 - Energy-efficient walls
 - Energy-efficient floors
 - Energy-efficient ceilings
- Family & Community:**
 - ELL/RFEP Needs
 - Summer Programs/Workshops
 - Renewable Energy
 - Safety
 - Summer Programs/Workshops
 - ELL/RFEP Needs
 - Classroom Knowledge Gaps
- Academic Support & Intervention:**
 - Technology
 - Mental Health & Wellness
 - Equity Needs
- Facilities & Operations:**
 - WIFI coverage
 - Integrating SP party services on buses
 - Reducing transportation costs
- Fundraising & Development:**
 - College/scholarships
 - Communication between stakeholders
 - Donor Moderation

Recap of PCHS Fiscal Priorities

- These are critical expenditures/areas which are expected to increase in coming years
- Will review and prioritize at upcoming Board of Trustee Board Budget Workshop on 2/2

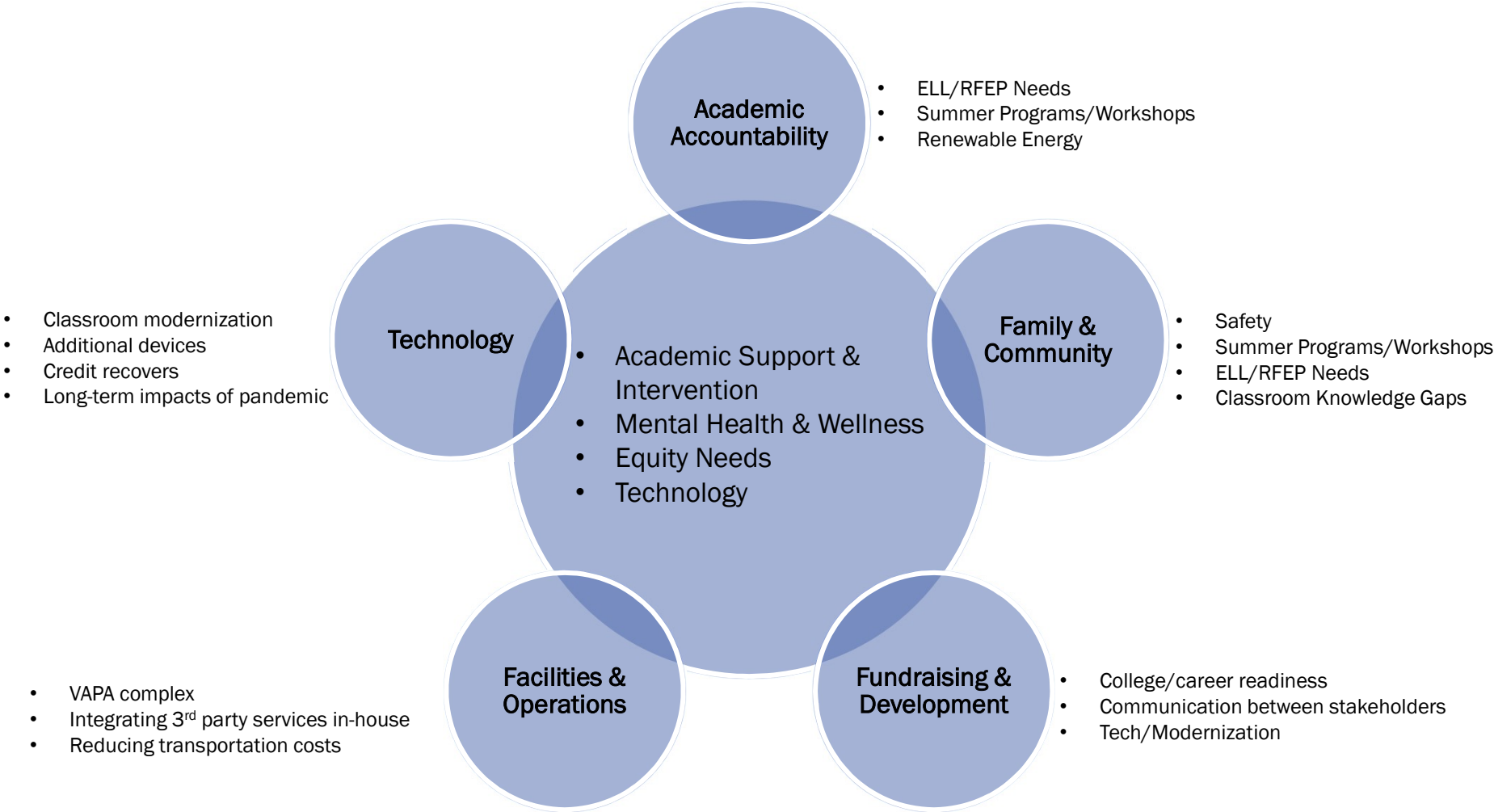


WASC Goals

- Continuously narrow the **educational opportunity gap** between white, Asian American students and African American and Latino students through increasing capacity by:
- Continuously diversify and personalize PCHS staff **Professional Development** to include training in the following areas:
- Develop a system of centralized, expedient, external and internal data collection, analysis, and communication in order to:
- Develop and implement a **revised school-wide Technology Plan** that provides equitable access to educational technology resources in order to increase student achievement.
- Transportation: Pursue available funding to **subsidize transportation** for PCHS families who can least afford it; **provide** alternative transportation options in order to sustain PCHS' diversity.
- Develop and maintain a positive and **equitable school climate** and culture by:
- Expand and continuously improve PCHS's **systemic student support**:
- Maintenance/facilities:** PCHS will continue to work with LAUSD to maintain a clean facility in good repair (space and aging infrastructure).

Note: Equity and technology were key priorities/themes, yet were determined to be support/action items and not stand-alone goals

LSTP Feedback: Preliminary LCAP Goal Development



The proposed 2021-24 LCAP Goals also align with our current WASC Goals

WASC Goals

1. Continuously narrow the **educational opportunity gap** between white, Asian American students and African American and Latino students through increasing capacity by:
2. Continuously diversify and personalize PCHS staff **Professional Development** to include training in the following areas:
3. Develop a system of centralized, expedient, external and internal data collection, analysis, and **communication** in order to:
4. Develop and implement a **revised school-wide Technology Plan** that provides equitable access to educational technology resources in order to **increase student achievement**.
5. Transportation: Pursue available funding to **subsidize transportation** for PCHS families who can least afford it, and provide alternative transportation options in order to sustain PCHS' diversity.
6. Develop and maintain a **positive and equitable school climate and culture** by:
7. Expand and continuously **improve PCHS's systemic student support** by:
8. **Maintenance/Facilities:** PCHS will continue to work with LAUSD to maintain a clean facility in good repair (space and aging infrastructure):

The proposed 2021-24 LCAP Goals also align with our current Schoolwide Goals

- Balance budget and build fund balance for the future. Identify clear budget priorities.
- Commit to **equitable** policies and practices to ensure Pali's **diverse** student population has **access to academic opportunities**.
- PCHS will continue to **cultivate and expand opportunities for social emotional wellness development** and stress management both inside and outside the classroom.
- Improve consistency in **instructional curriculum**, policies, and practices and increase **student centered learning**.
- Utilize **communication** systems currently in place to convey Pali's strengths, needs, data, and opportunities for participation so that all stakeholders are well-informed and understood.

ACTIONS/EXPENDITURES



LTSP Feedback: Identifying Action Items

- The action items below were driven from prior LTSP meeting feedback and help fuel the budget development / expenditures

Increase Proficiency & Academic Achievement

- Summer programs/workshops
- Credit recovery/graduation adjustments
- Academic support
- Professional resources
- Personalized learning
- Integrating data
- Addressing inequities on campus
- Technology resources
- Academic proficiency

Prepare graduates for post-secondary experiences

- CTE partnerships/courses
- College readiness
- Dual enrollment expansion
- New course offerings
- Partnerships
- Socially just
- Counseling

Safe & Positive School Environment

- Mental health & wellness (awareness)
- Busing
- Gender neutral restrooms
- A-building hallway makeover to reflect diversity
- Managing racial issues
- Equity across campus
- Police & security guards
- Providing transportation to students

Modernization

- Exploring full 1:1
- Updating all classroom technology
- Adopt & implement ISTE standards in curriculum
- Textbooks & instructional materials
- Replace clock/PA system
- Increase student engagement
- Renewable energy (solar, LED bulbs, back-up power, CNG busing)
- Ventilation system enhancements