

EdTec Services Overview for Oakland Military Institute

BRYCE FLEMING – VP SCHOOL FINANCE

MARK CAMPO – EVP & CMO

FEBRUARY 15, 2024



1. Introduction
2. About Us
3. Why EdTec?
4. EdTec & OMI: Working Together
5. EdTec School Portal
6. Service Pricing and Term
7. Onboarding Overview
8. Additional High Value Services
9. Q&A

“EdTec goes above and beyond and is a true partner to our organization. Everybody at EdTec from our senior finance lead to the transactional team demonstrates a work ethic, depth of knowledge and level of integrity incomparable to anyone else in the field.

We have grown from one school to a five-school charter management organization, and EdTec is instrumental in ensuring we’re proceeding in the right direction and prepared for the future. We are confident and grateful when we say: EdTec works for us.

They are truly integral to our organization and I am proud that EdTec is part of the Fenton family.”



***Irene Sumida - Founder & Executive Director
Fenton Charter Public Schools***

- EdTec is a social enterprise committed to improving public education by supporting charter schools with **business**, **operations**, and **performance** services.
- We are motivated by our **vision** to have the **greatest positive impact on the quality of public education**, as evidenced by our successful long-term partnerships with charter schools across the country.



97% client
retention rate

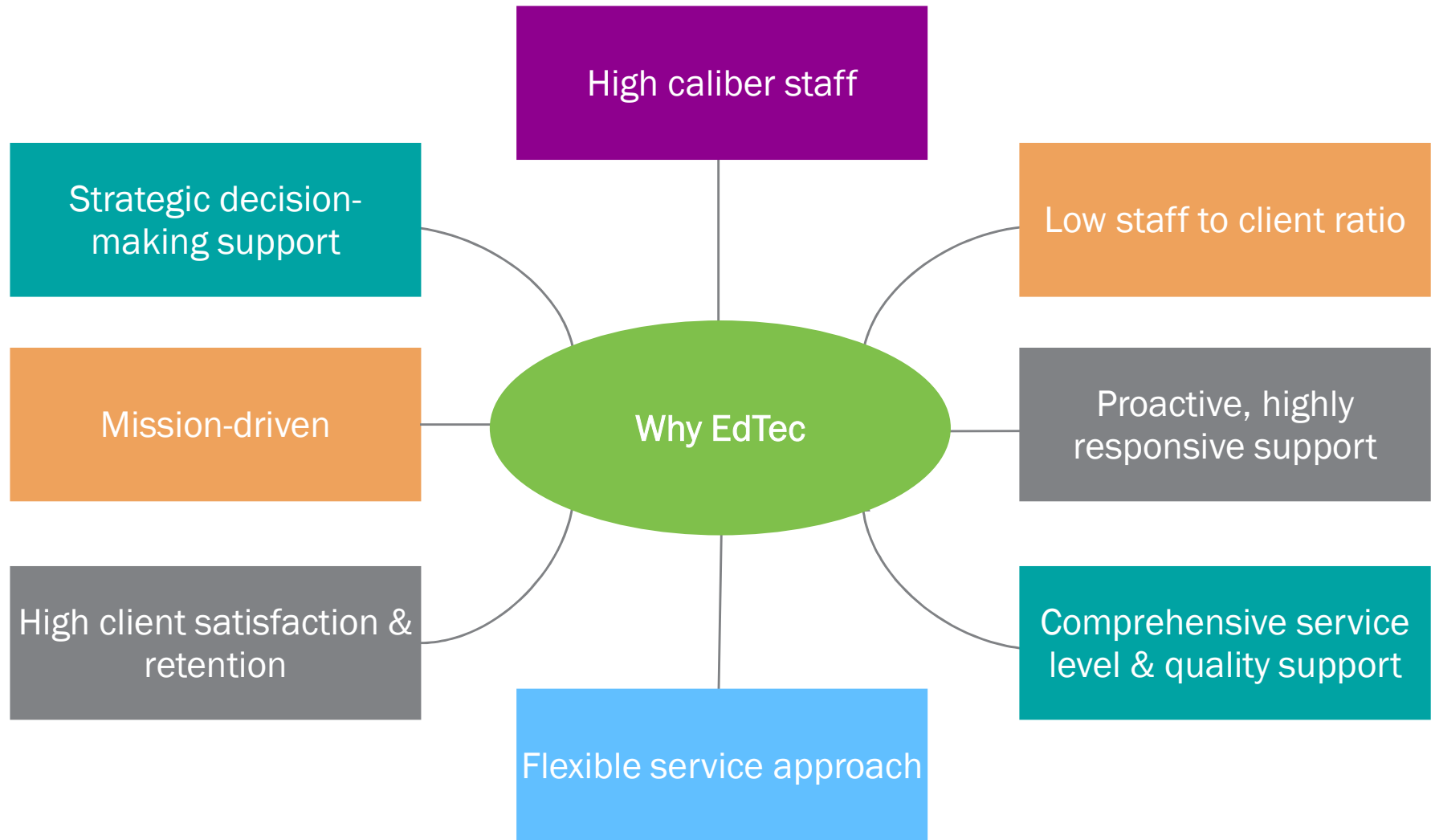


300+
partner schools



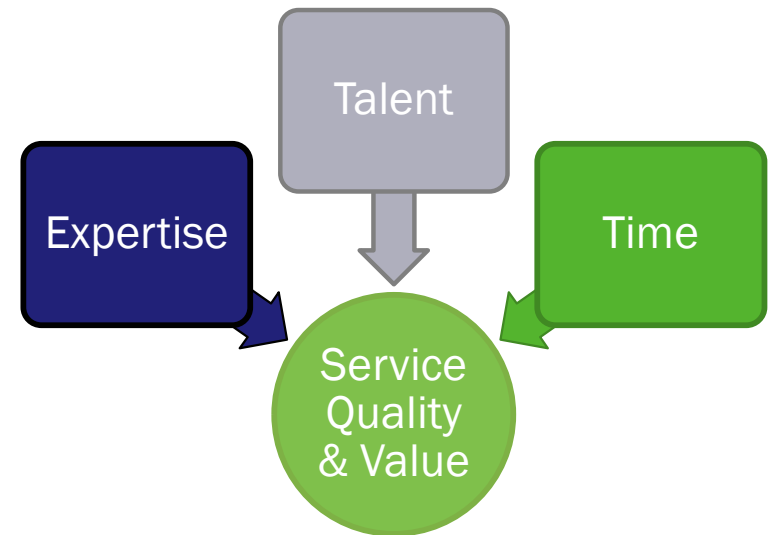
23 years of
charter focus

- Our **exceptional staff** understands the needs and workings of charter schools inside and out, and supports schools with a comprehensive range of services including **charter petition development**, **back office**, **school data and compliance**, **school software**, and **consulting**.



- Supporting Oakland Charters since 2001
- Mission Driven
- Unique Approach
- Benefits of Scale
- Service Delivery Quality
- Strategic Decision-Making Support
- Access to Deep Bench
- Experience and Tools to Support OMI

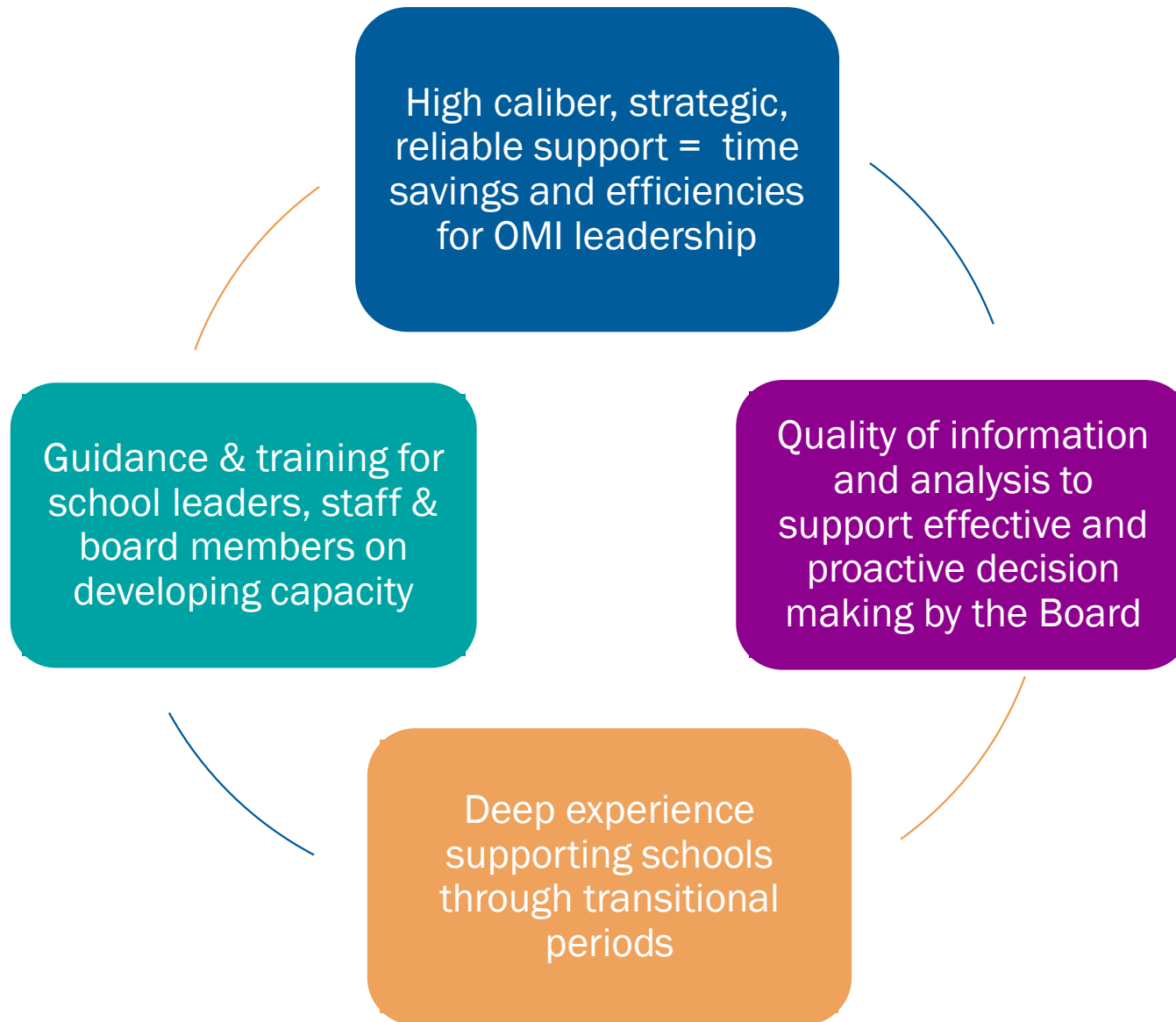
- Board Training & Evaluation
- LCAP Support
- Student Performance Analysis
- Strategic Planning
- Grant Research & Development
- Policy & Operations Templates
- WASC Support
- Charter Renewal



Why EdTec?



Expertise aligned with key school requirements:

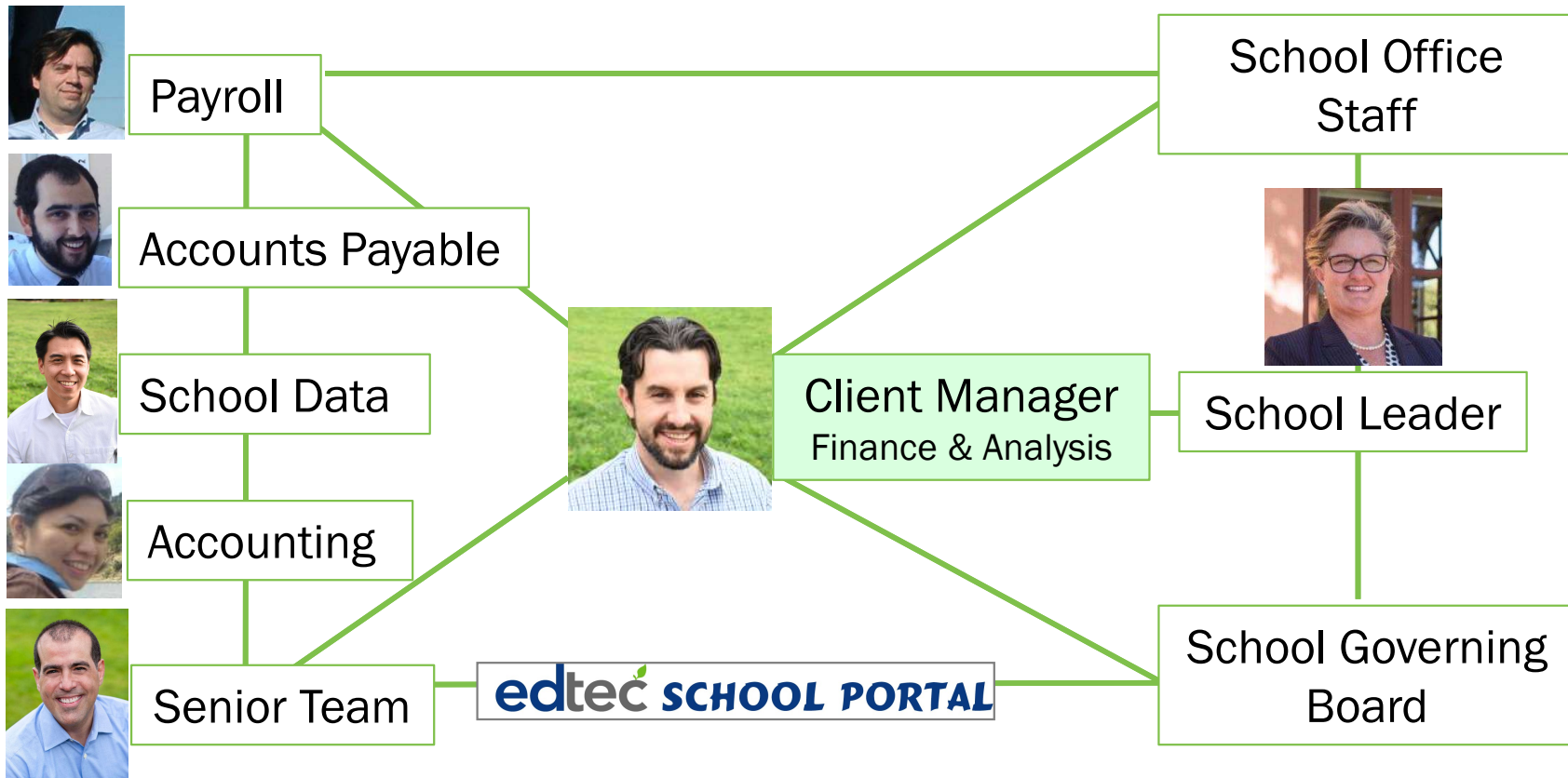


EdTec & OMI: Working Together

edtec Support Team:



School Leadership & Staff:



■ edtec SCHOOL PORTAL

- ESP view access is included in EdTec's back-office service cost
- ESP is an enterprise operations platform designed and configured specifically for California charter schools.
- ESP provides integrated accounting, financial reporting, compliance information, school operational best practices, etc.
- Cloud-based solution providing 24/7 visibility to the following key information, features and reports:
 - Management Dashboard of KPIs
 - Financial Reports
 - Drill-Down to Transaction Detail
 - Employee Information Tracking
 - Permissions-Based by User Role
- Previously licensed by OMI from 2013 to 2018 and proven capable

Service Pricing and Term

- Initial 3-year contract term; 1-year renewal terms

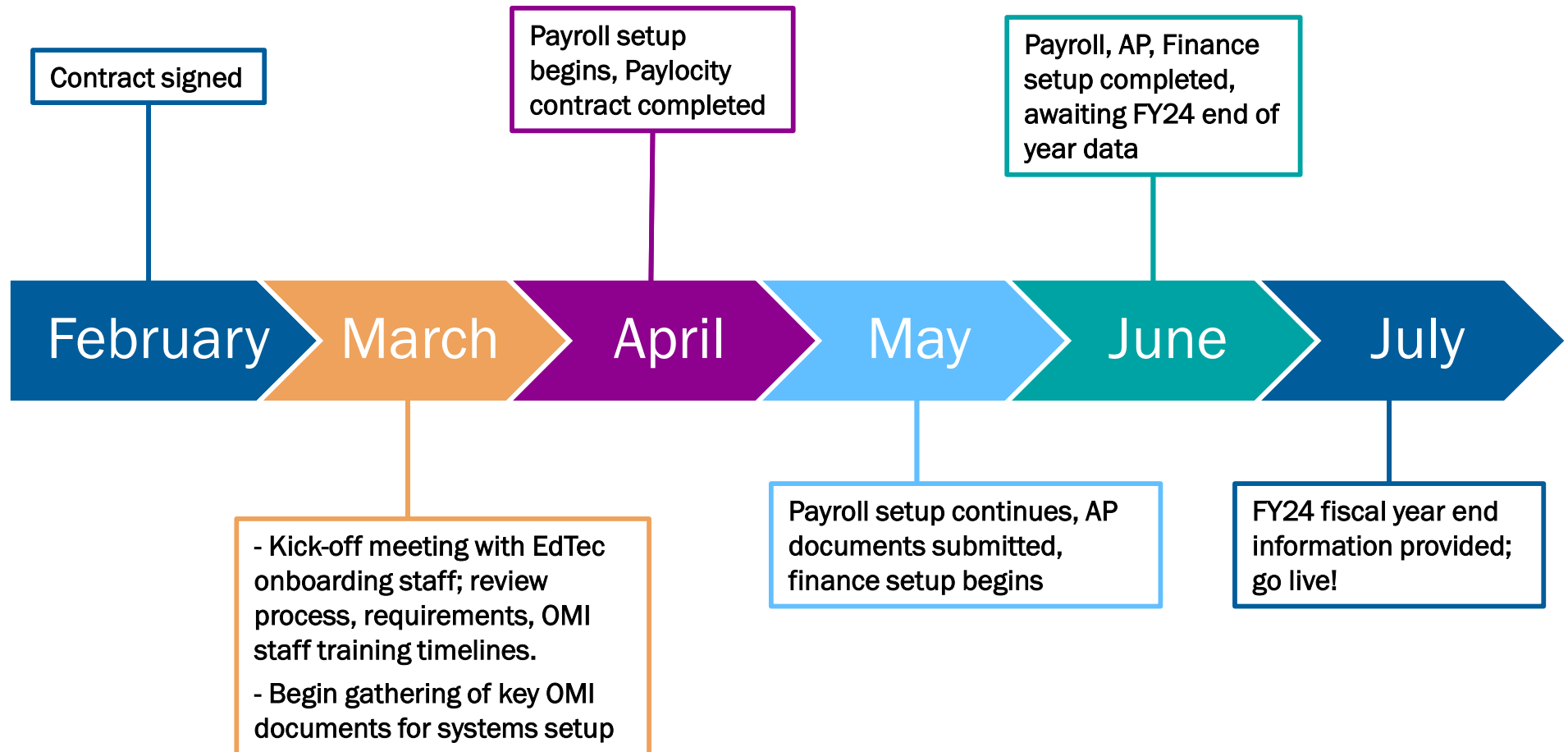
Back Office Service Annual Cost	2024-25
Fixed Annual Cost	\$197,000

Back Office Service Annual Cost	2025-26
Fixed Annual Cost	\$210,000

Annual Service Cost	2026-27
Fixed Annual Cost	\$215,000

Additional Costs	\$
Year 1: One-Time Set-Up & Conversion Charge	\$8,000
Year 1/Year 2/Year 3 <ul style="list-style-type: none"> CALPADS Service Paylocity Check Processing Estimated Fees (paid directly to Paylocity) 	\$10,500/year ~\$6,600-\$7,200/year

Onboarding Overview



Payroll Onboarding Detail

Initial documents to EdTec for Paylocity contracts: March - early April

- Voided check
- Latest Payroll register with YTD information
- 501c3 letter
- Copies of most recent state & federal payroll tax filings (Q1 tax returns)

Paylocity contracts generated & signed: mid-late April

First round of information to EdTec: early May

- Employee demographics
- Payroll register with QTD and YTD information

2nd round of information to EdTec: early July (after last payroll with prior provider)

- Last pull of employee demographics
- YTD information

Accounts Payable Detail

Initial documents: early May

- Statements for all credit card accounts
- Signature forms for check printing
- EdTec AP & Banking Requirements document (outlines approval thresholds)

Secondary documents: early June

- Vendor list
- Provide Board-approved financial policies

Finance Detail

Initial requests: May-June

- Set up view-only accounts for bank and credit card accounts
- Provide most recent audit report and 990
- Provide most recent First and Second Interim Reports
- Upload preliminary GL detail and trial balance
 - Note: we will ask for a final list at the end of July, once the prior fiscal year is closed

Additional High Value Services

- Student & School Performance Data Analysis Services

- EdTec provides board presentation quality graphical analyses for various school needs including:

- Charter Petition Renewal
- Presentations for Board Members & Parents
- Student Level Analyses for Teaching Staff



- LCAP Support

- LCAP 360 by EdTec: The 1st integrated end-to-end LCAP service
- Development, Alignment, Performance



- Grant Research & Writing

- Credentialing Support

- Charter Renewal Support Service

Q&A



Thank you!

Bryce@edtec.com

Mark@edtec.com

