

Dual/Concurrent Enrollment Yr 2022-2023

By: Mr. Jones
Dual/Concurrent Enrollment
Coordinator





01

Description & Statistics

Difference between
Dual and Concurrent
Enrollment

02


Graduates With College Credit

Enrollment numbers
within our program

03

Future Goals

Where are we going
as a program





01

Description & Statistics

Description of Program



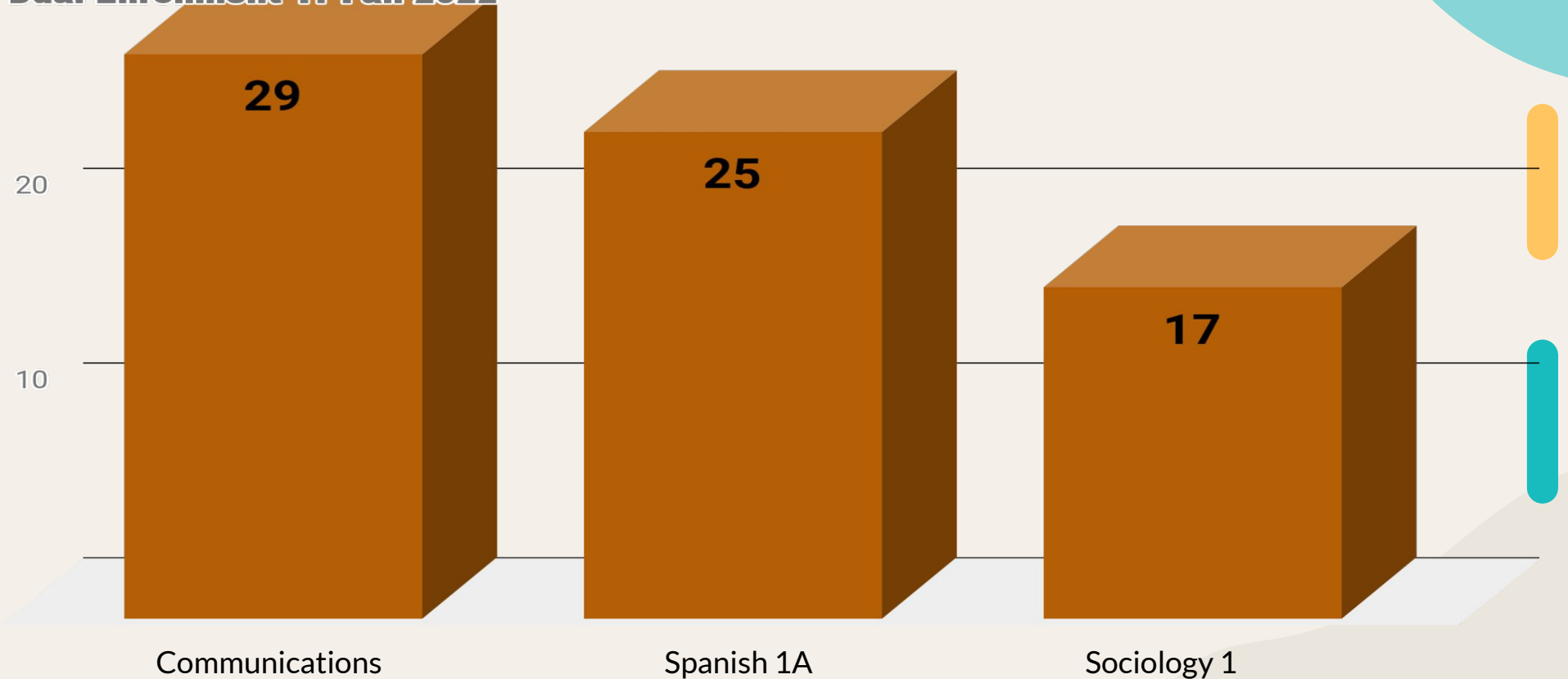
Dual Enrollment: Classes that are held on OMI's campus

Concurrent Enrollment: Classes that are held out of the physical classroom, at such colleges like (*Merritt, Berkeley, Laney, Alameda*)

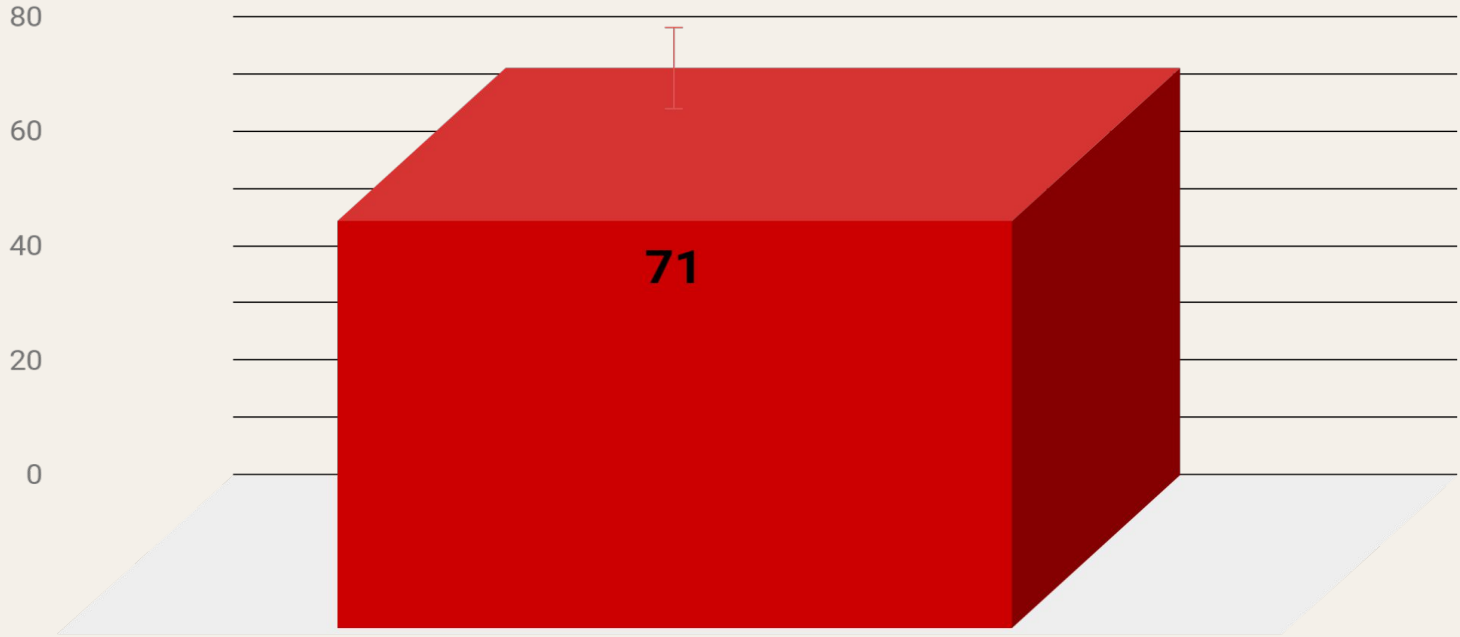


Number of Students in Dual Enrolment courses

Dual Enrollment Yr Fall 2022

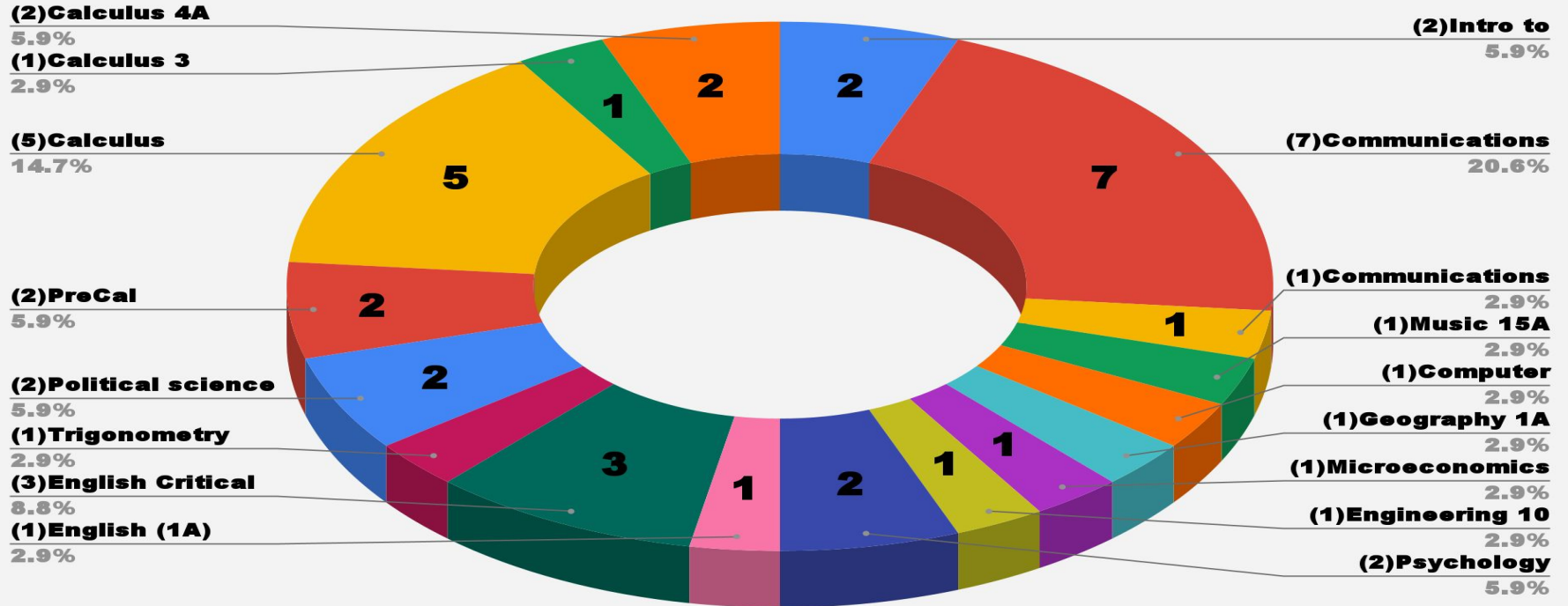


Total Number of Students in Dual Enrolment



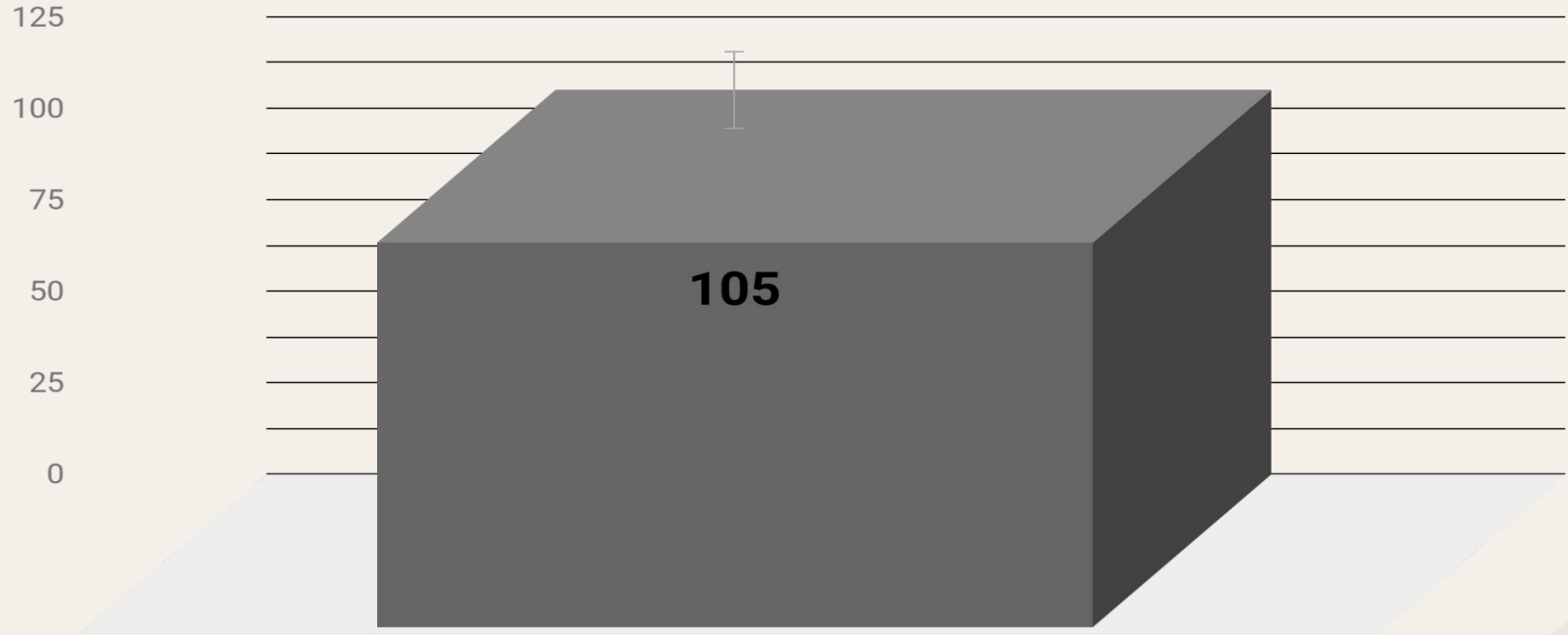
71 students

Concurrent Enrollment, Fall 2022



Total Students: 34

Total Dual/Concurrent Students



105 students



02
GRADUATES
WITH COLLEGE
CREDIT

GRADUATES WITH COLLEGE CREDIT

15 students

≈6-9 college Credits

4 students

≈21-25 college Credits

1 student

≈80 College Credits

19 students

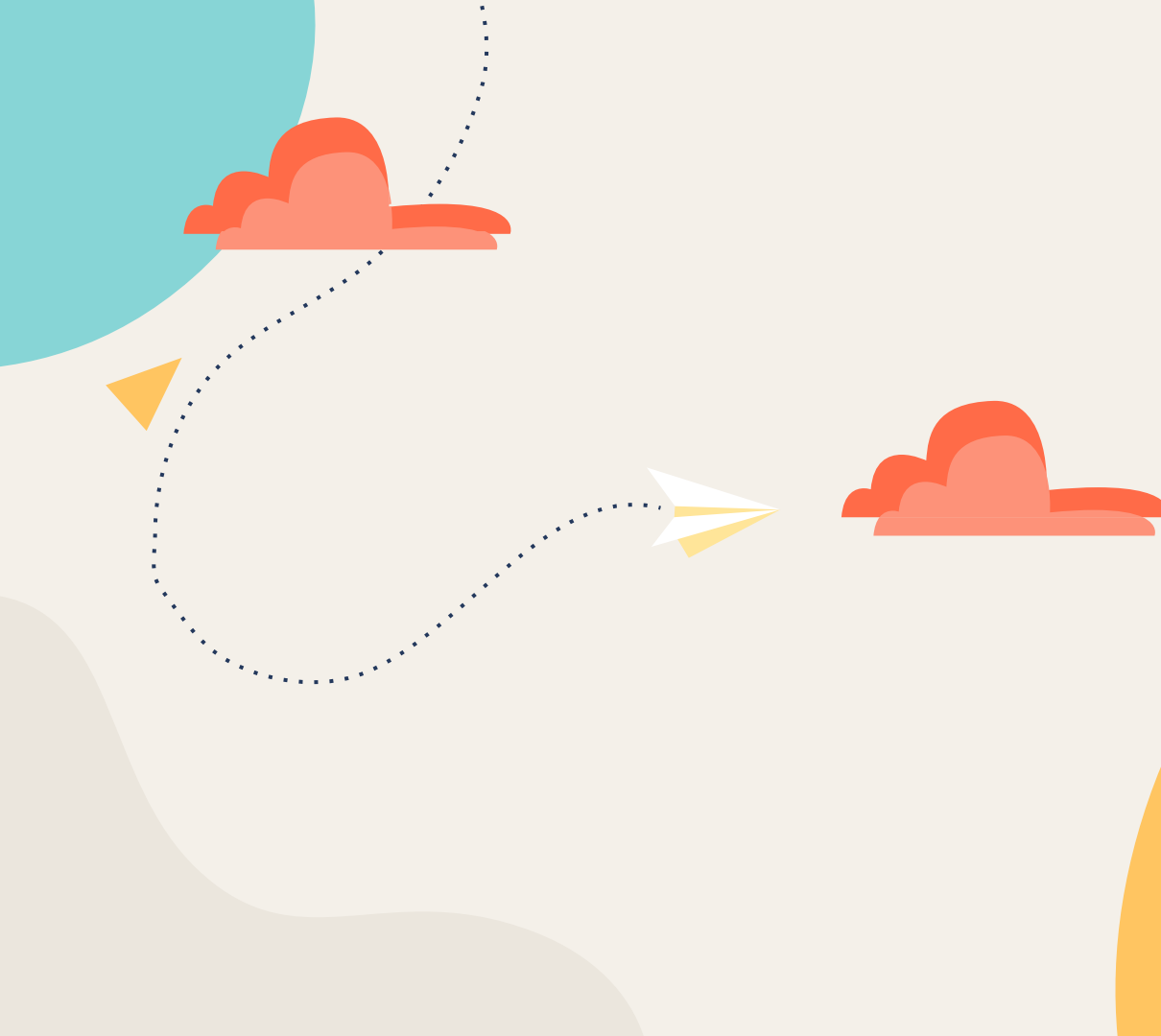
≈10-21 College Credits

5 students

≈40-60 College Credits

(Total) 41 students 

≈748(+) College Credits



03

Future Goals

Where are we going

Future Goals for Program



Remain Consistent

- Puzzle the gap from High school and College.



Open New Classes

- Berkeley City College- Coding Course
- Continue on with next semester classes
- Possibly opening more rigorous courses (Precalculus & English)



Increase Enrollment


- Seniors are giving presentations about the program throughout other classes



Thank You!



Do you have any questions?
djones@omiacademy.org
510-594-3905



CREDITS: This presentation template was created by **Slidesgo**, including icons by **Flaticon**, and infographics & images by **Freepik**

Please keep this slide for attribution