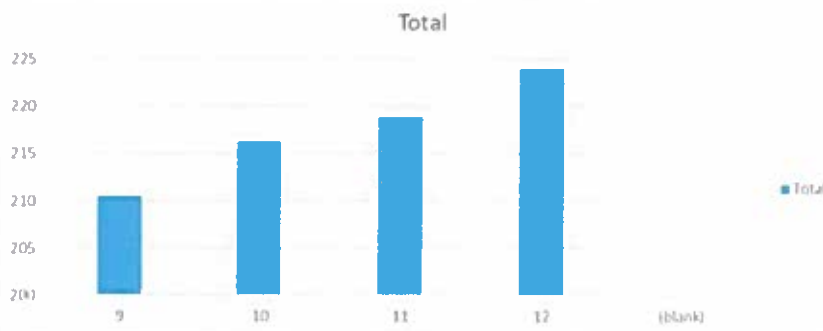


BCHS

Fall Reading Baseline

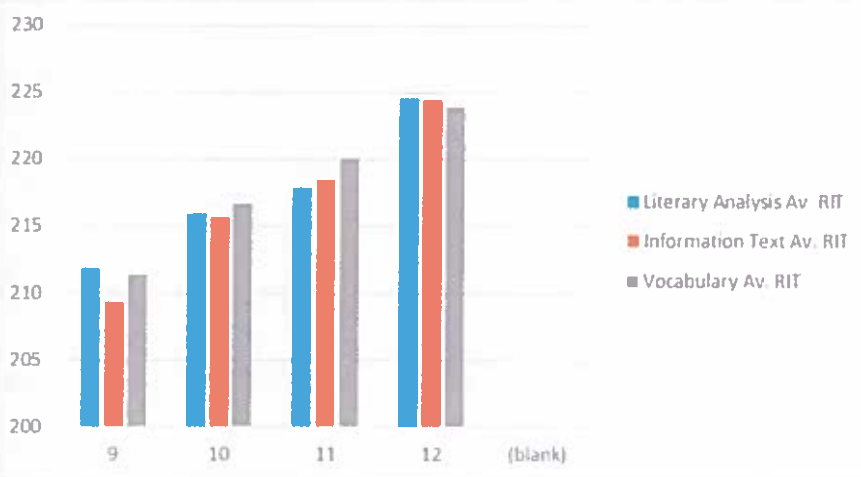
NWEA MAPs

Average Reading RIT Scores for Fall Baseline



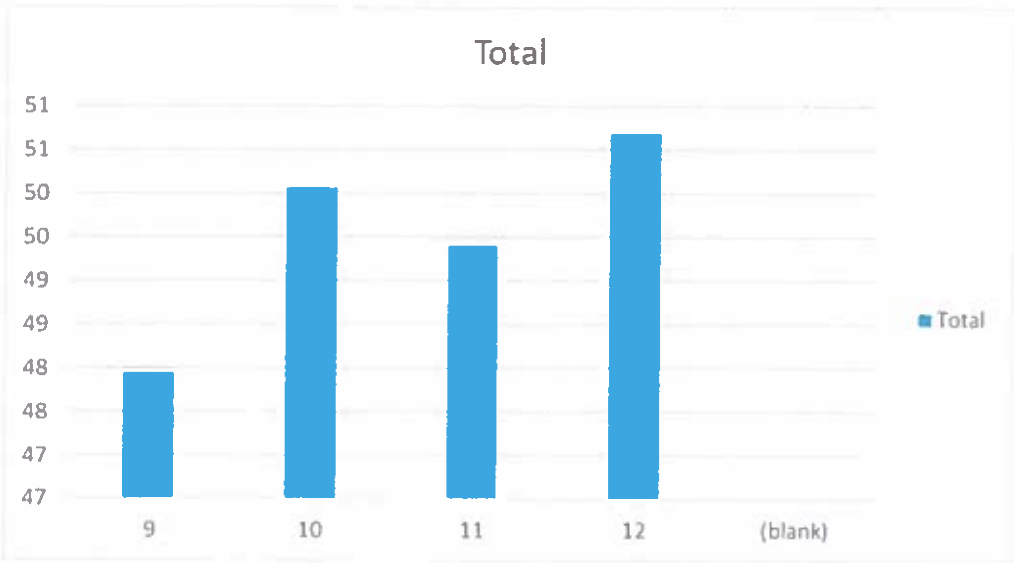
Overall, it's exciting to see that our reading scores grow over time: when students enter BCCHS as 9th graders, they typically score much lower than when they leave us as 12th graders. This holds true as an overall average and for all of our goal areas. In looking at our RIT scores by goal area, our students consistently score the highest in vocabulary; the outlier this year is our 12th graders, who scored the highest in literary analysis. To continue to track growth and progress, I would recommend professional development that makes connections between these goal areas and mastery in the classroom assessments. PD could also include using this (and other data) to make decisions about their lessons and what standards should be areas of focus during instruction and practice during class.

Fall Reading RIT by Goal Area



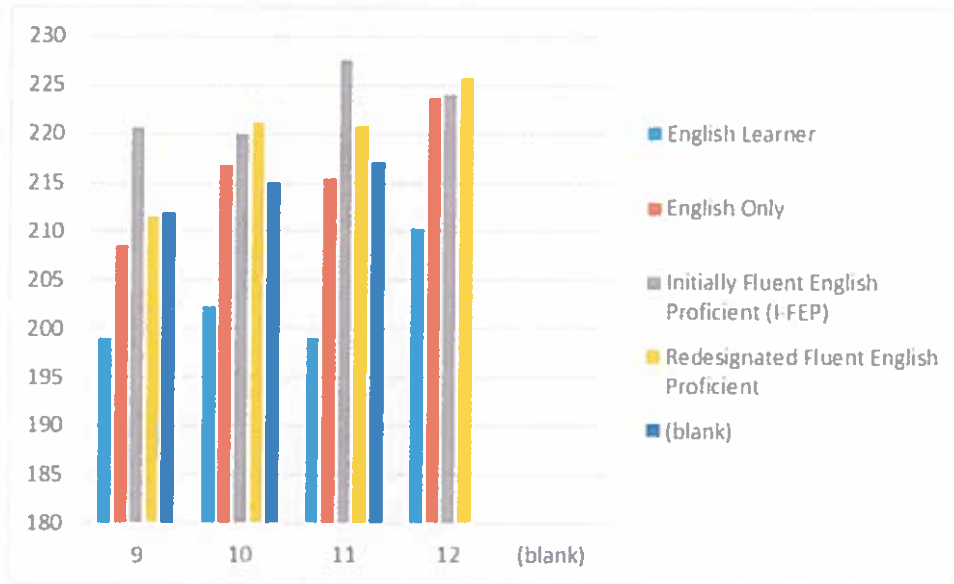
The subsequent pages contain score breakdown by subgroup and several looks at data from different viewpoints. If the board would like to see any other data points, please let me know!

Reading Overall Percent Correct



SUBGROUPS

Average Reading RIT Scores for Fall Baseline-English Learners



Average Reading RIT Scores for Fall Baseline-SPED

