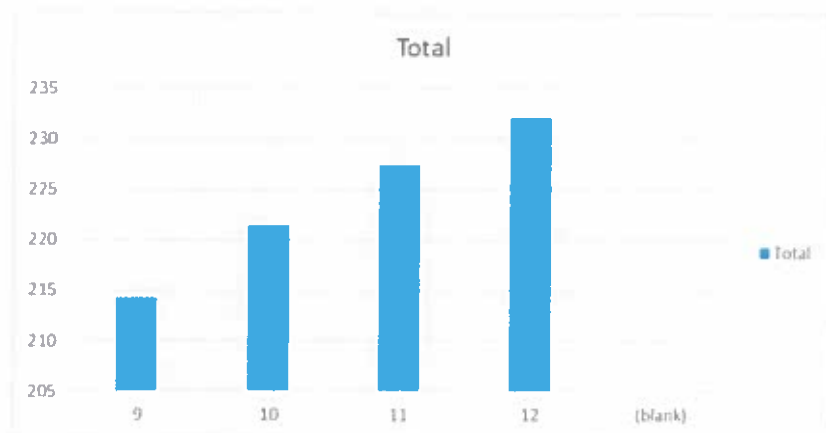


BCHS

Fall Math Baseline

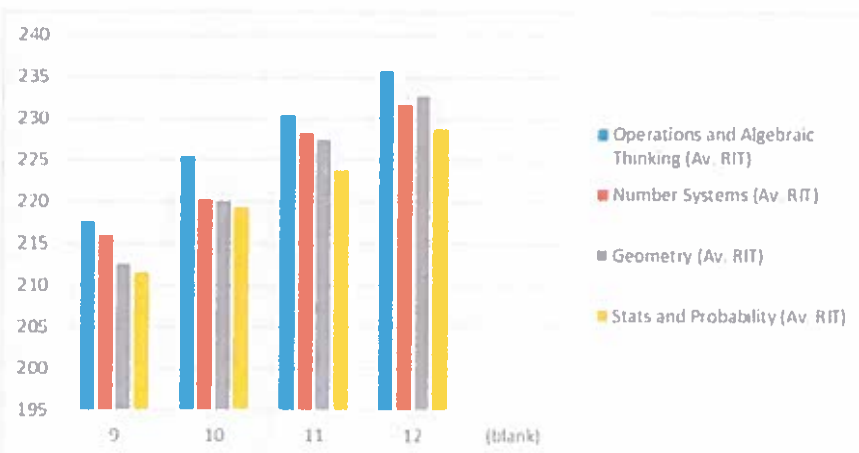
NWEA MAPs

Average Math RIT Scores for Fall Baseline



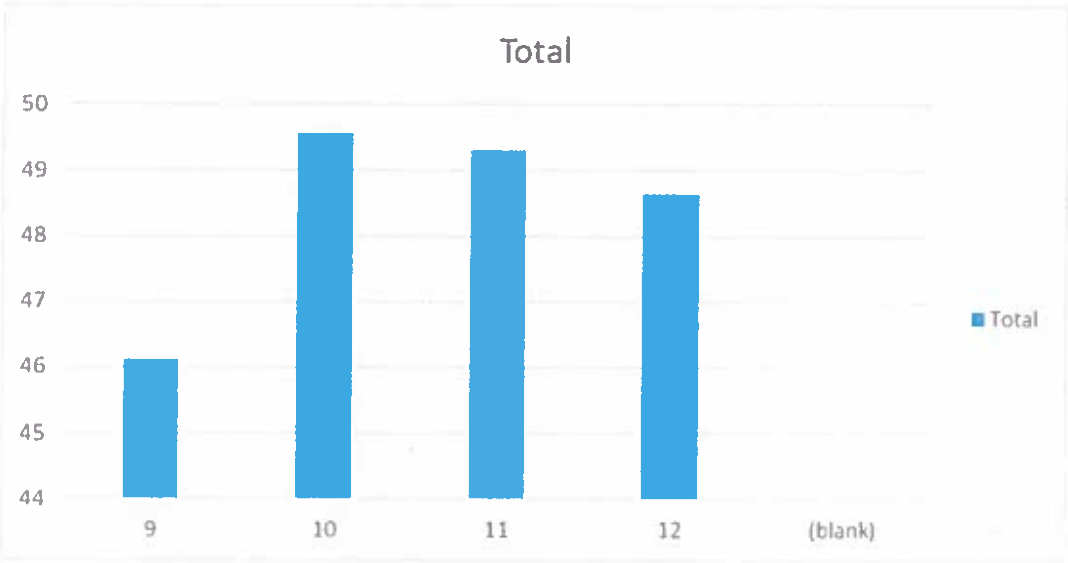
Overall, it's exciting to see that our math scores grow over time: when students enter BCBS as 9th graders, they typically score much lower than when they leave us as 12th graders. This holds true as an overall average and for all of our goal areas. In looking at our RIT scores by goal area, our students consistently score the highest in Operations and Algebraic Thinking and the lowest in Statistics and Probability. This low performance in Stats and probability is a trend we see starting in 6th grade that continues through our high schools. This could be a great topic for conversation at a professional development meeting or during a math department meeting. Additionally, our students with special needs don't seem to grow a quite the same rate as our general education population, so I would recommend focusing on this growth and in strategic areas with Mr. Nutt and the resource team.

Fall Math RIT by Goal Area



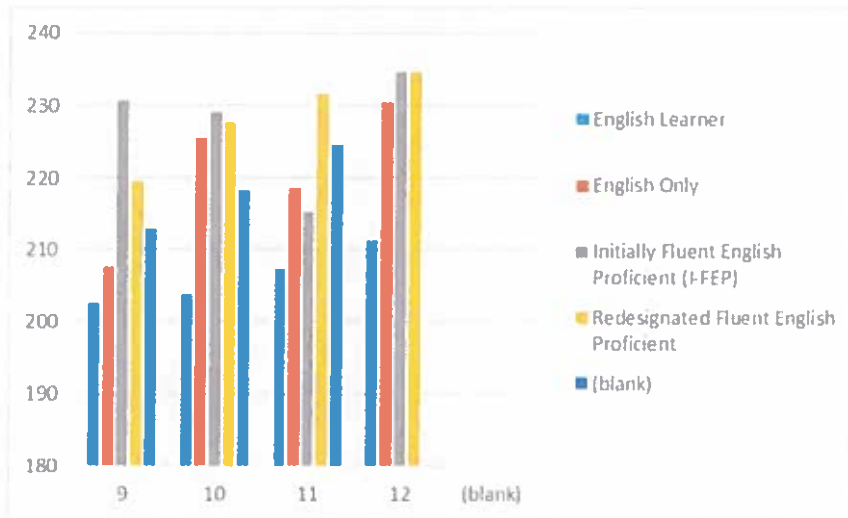
The subsequent pages contain score breakdown by subgroup and several looks at data from different viewpoints. If the board would like to see any other data points, please let me know!

Math Overall Percent Correct



SUBGROUPS

Average Math RIT Scores for Fall Baseline-English Learners



Average Math RIT Scores for Fall Baseline-SPED

