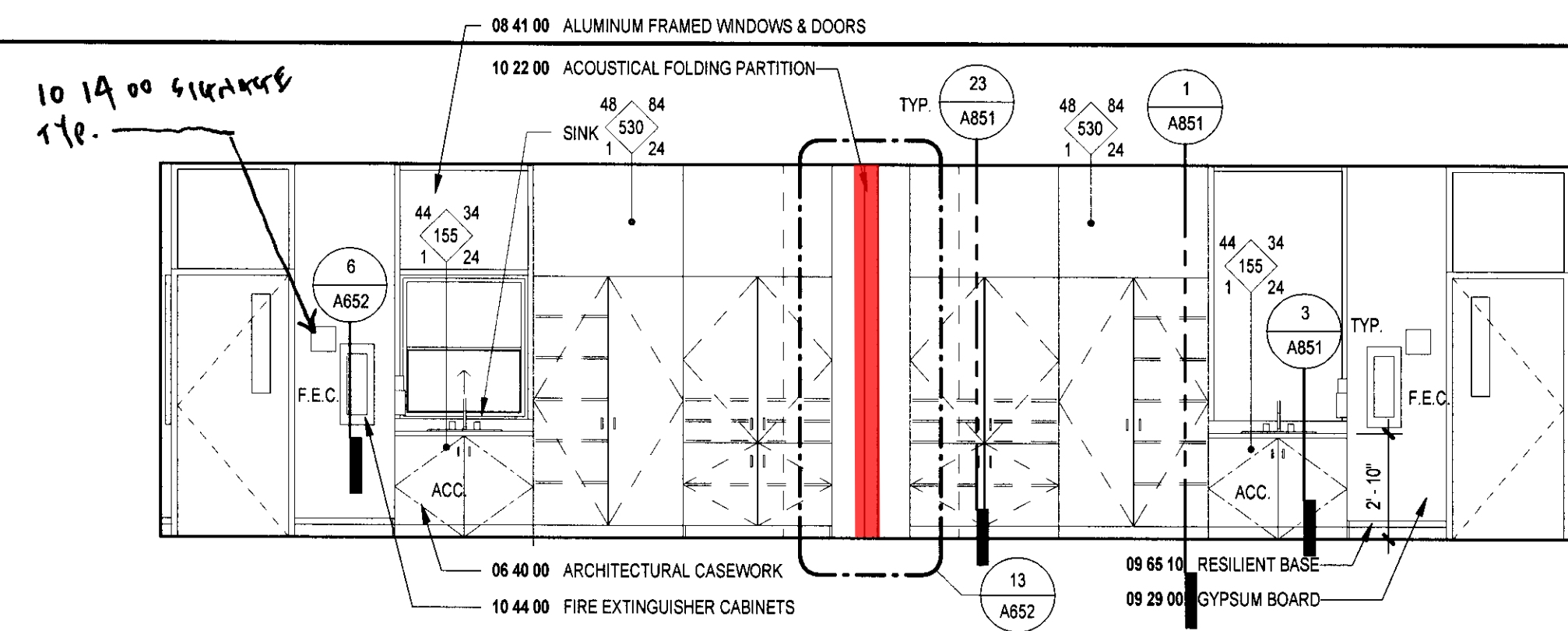


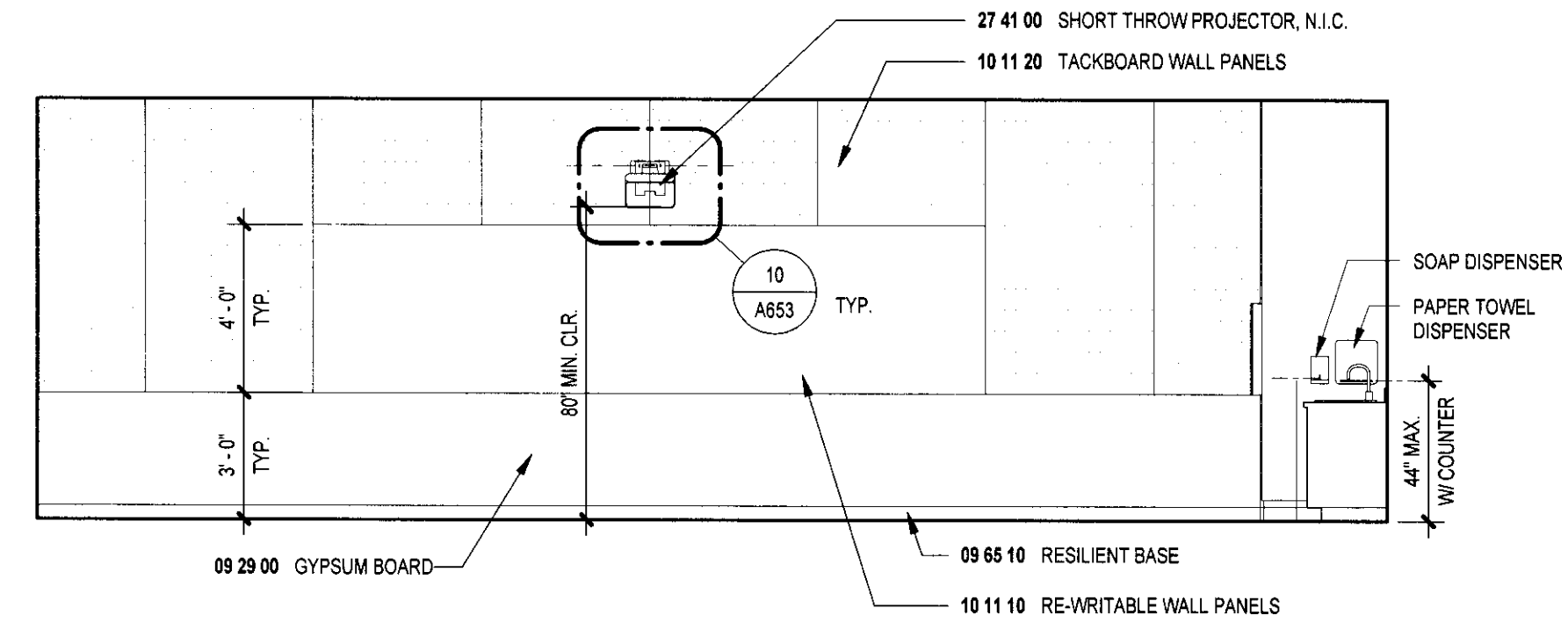


# BID ALTERNATE #3: DELETE OPERABLE ACOUSTICAL PARTITION

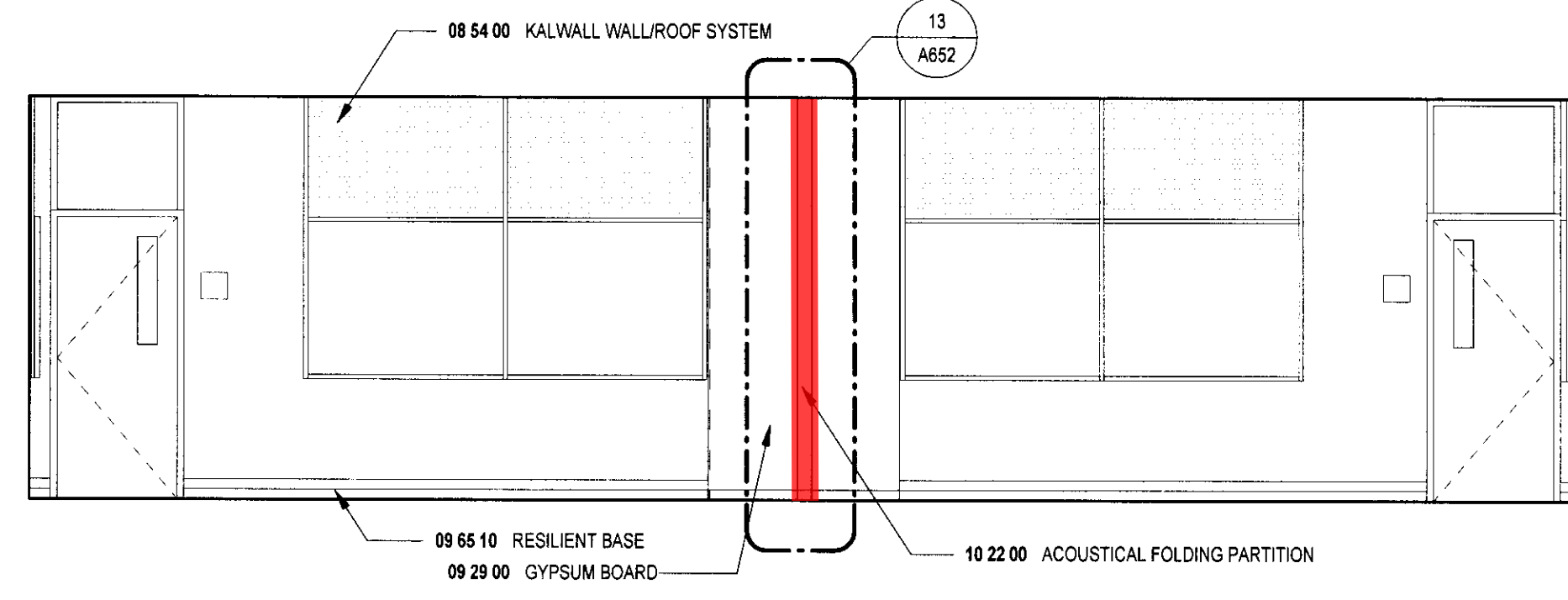
FOR FINISH MATERIAL AND COLORS REFER IN802 AND IN803 TYPICAL FOR ALL



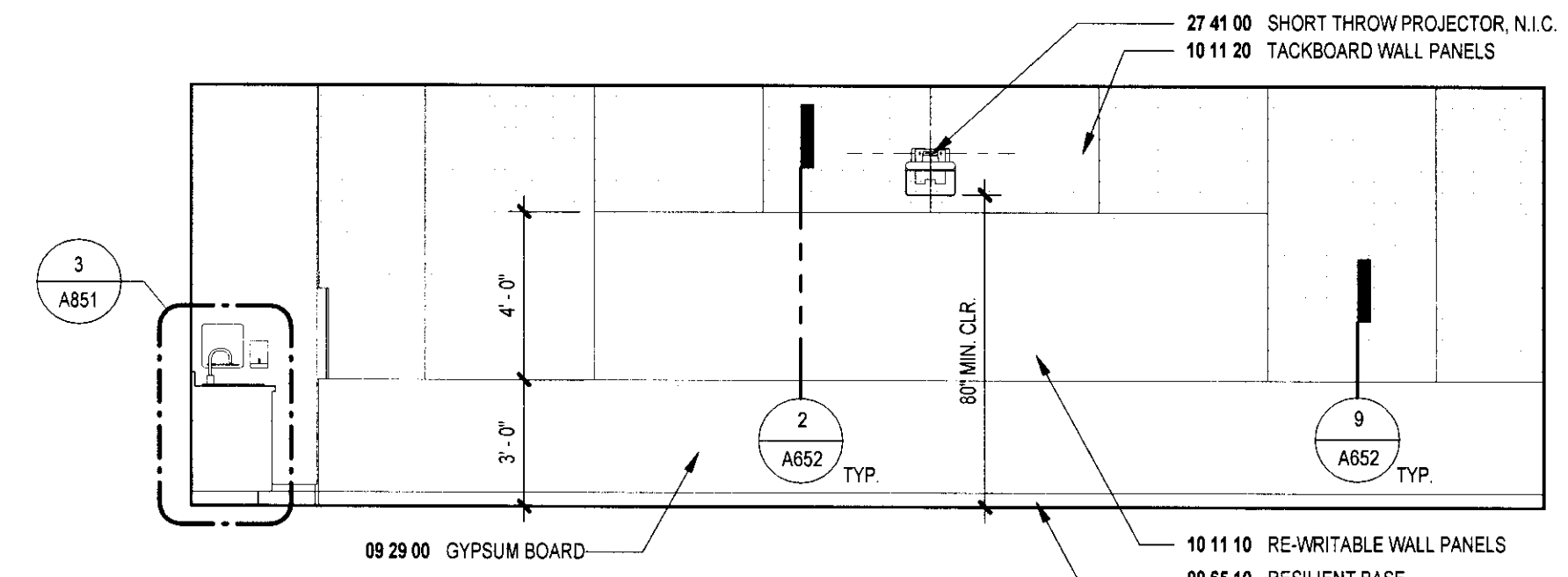
SPECIAL EDUCATION / RESOURCE SPECIALIST C103 WEST 1/4" = 1'-0" 6



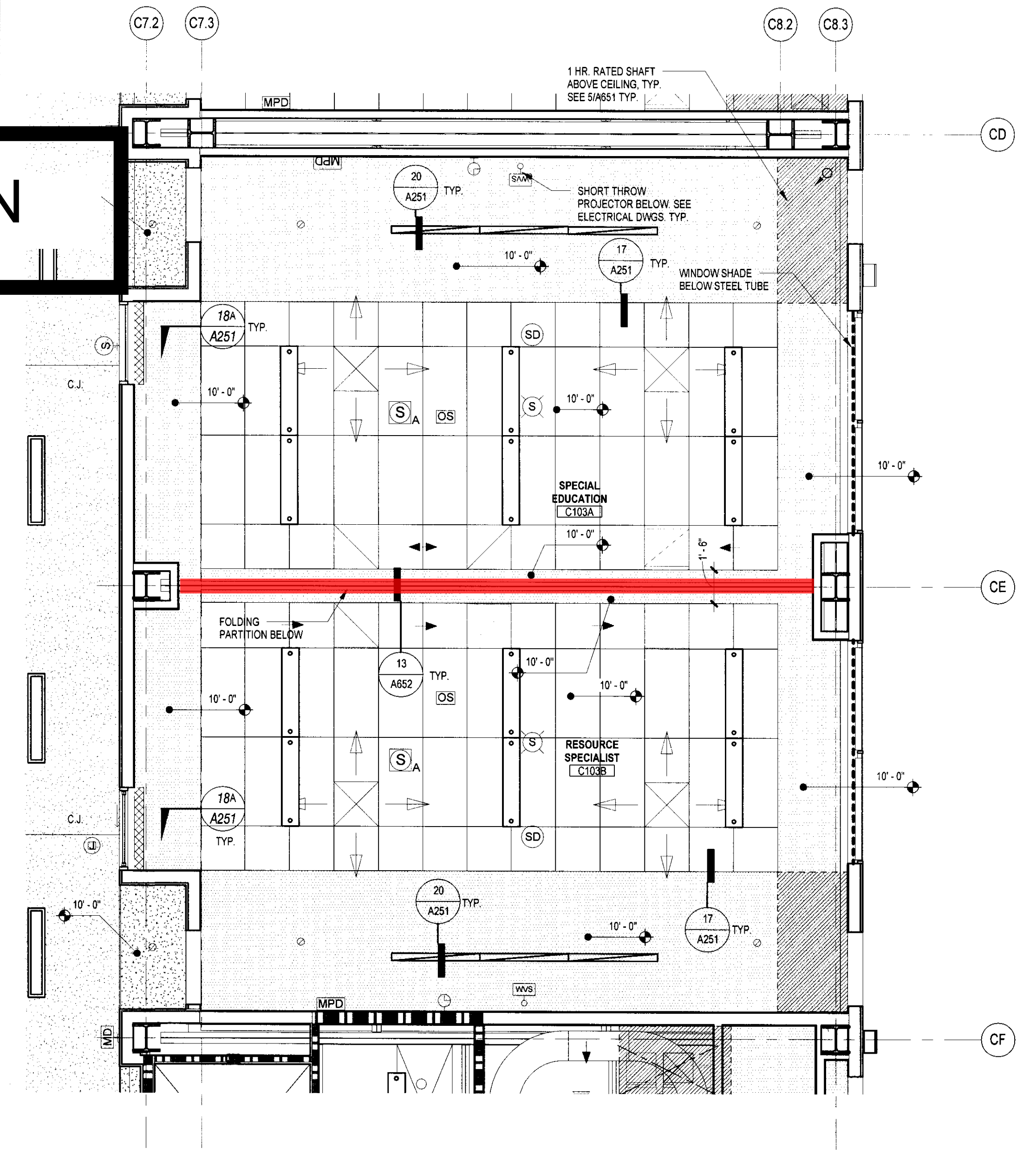
SPECIAL EDUCATION / RESOURCE SPECIALIST C103 SOUTH 1/4" = 1'-0" 5



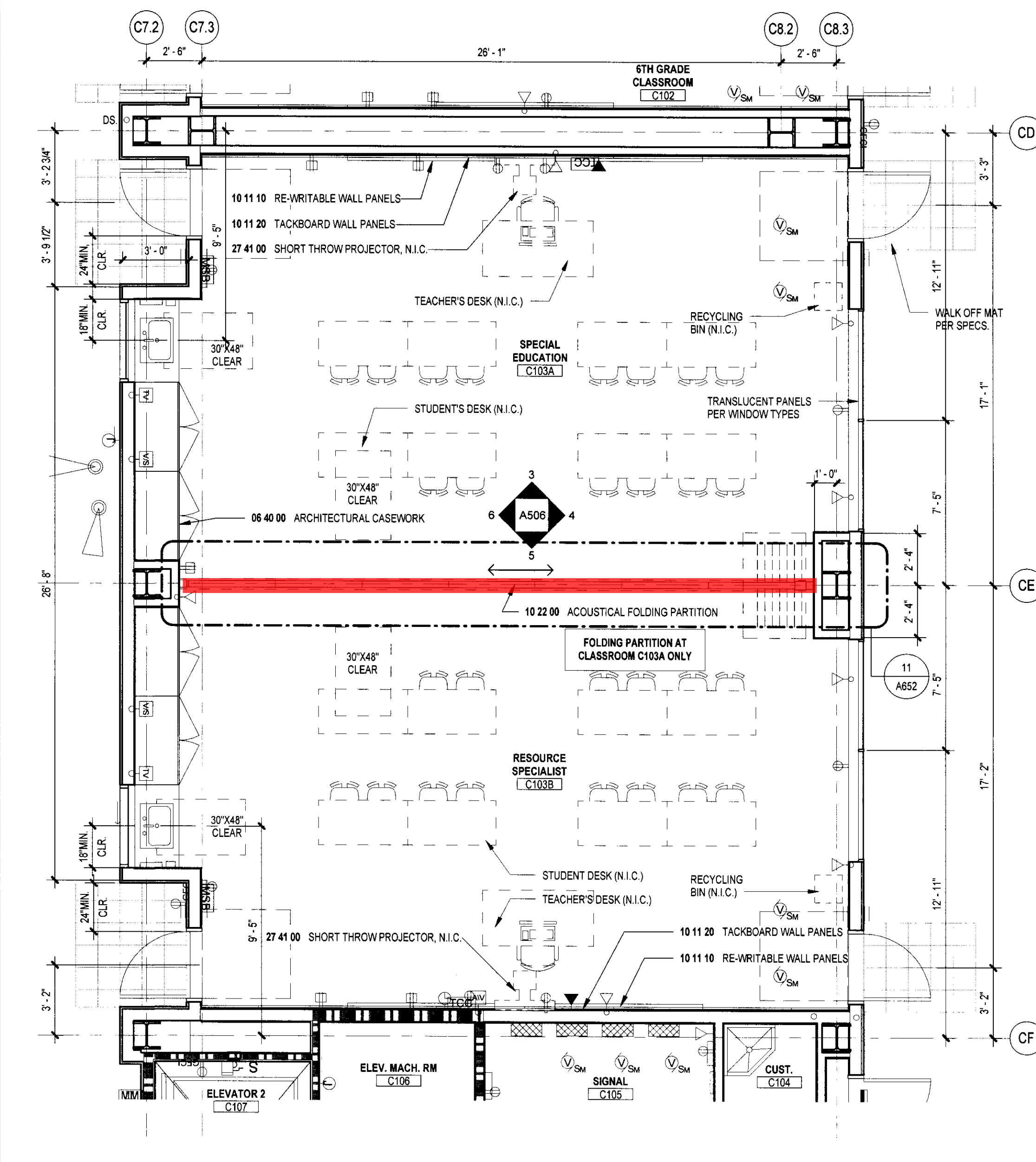
SPECIAL EDUCATION / RESOURCE SPECIALIST C103 EAST 1/4" = 1'-0" 4



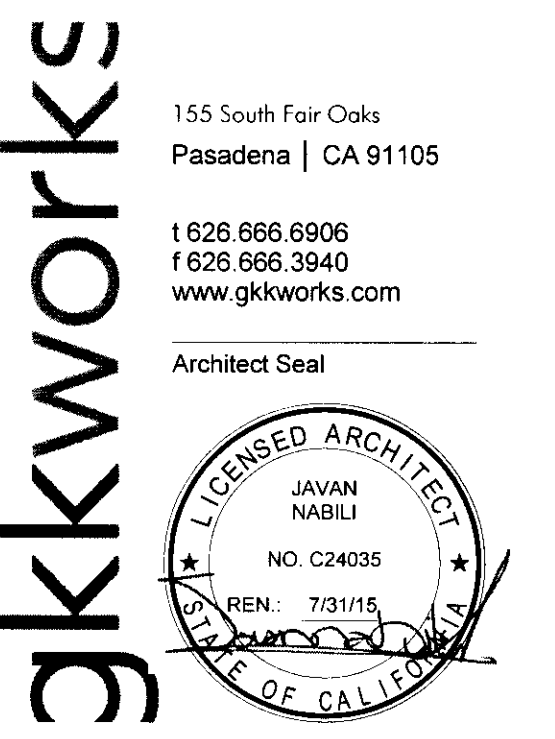
SPECIAL EDUCATION / RESOURCE SPECIALIST C103 NORTH 1/4" = 1'-0" 3



FLEXIBLE CLASSROOM C103 ENLARGED 1/4" = 1'-0" 2

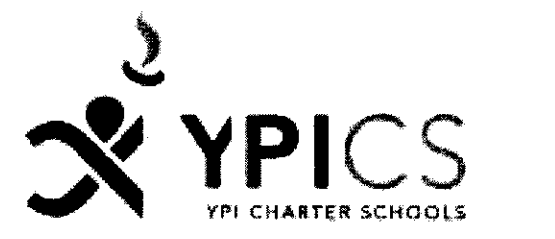


FLEXIBLE CLASSROOM C103 ENLARGED PLAN 1/4" = 1'-0" 1



155 South Fair Oaks  
Pasadena | CA 91105  
1 626 666 6906  
1 626 666 3940  
www.gkkworks.com

IDENTIFICATION STAMP  
DIV. OF STATE ARCHITECT  
APP. 03-119857  
AC. W. FLS. SS.  
DATE: MAR 1 0 2015



MONSEÑOR OSCAR ROMERO CHARTER SCHOOL  
2630 W. 117TH STREET  
LOS ANGELES, CA 90068  
PROJECT NUMBER: 10149  
DRAWN: Author  
CHECKED: Checker  
ISSUE/REVISION:

DSA BACKCHECK  
MARCH, 2015

ENLARGED PLANS AND  
INTERIOR ELEVATIONS

A506

ASB ENLARGED PLANS AND INTERIOR ELEVATIONS 2/26/15 10:46:52 AM  
C:\asb\gk\enlarged\Documents\ASB\_C103\A13-10149.dgn\enlarged