



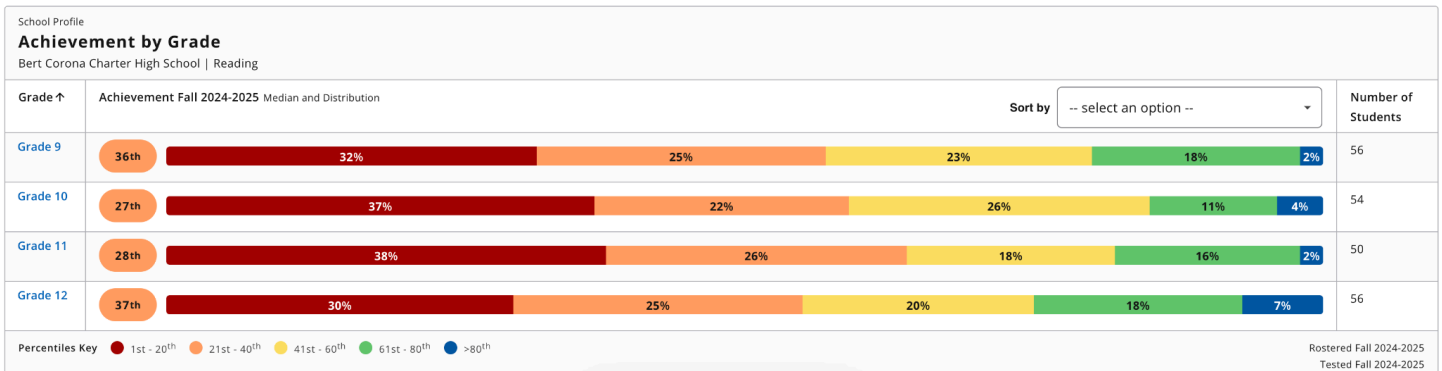
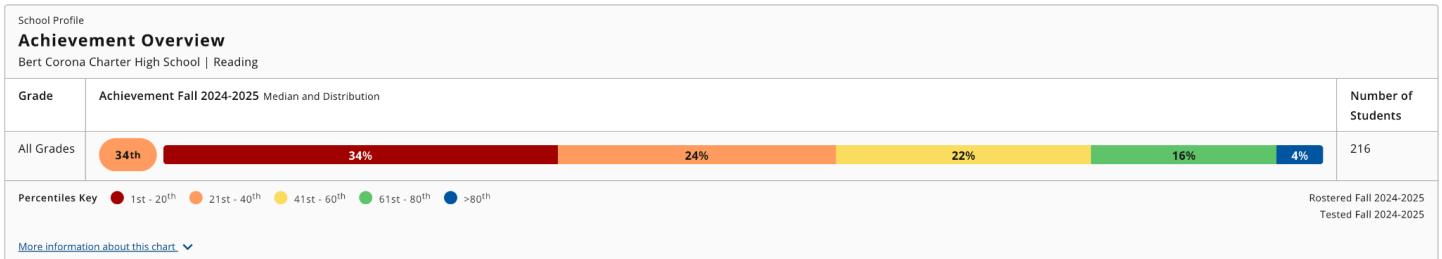
## Board Report Ruben Dueñas, Interim Executive Administrator September 30, 2024

*The mission of the YPI Charter Schools (YPICS) is to prepare students for academic success in high school, as well as post-secondary education; prepare students to be responsible and active participants in their community; and enable students to become lifelong learners. Students at YPI Charter Schools will become active citizens who characterize the ideals of a diverse and democratic society. Students will provide service to their community, take responsibility for their own learning, and develop the habits of mind and body that will empower them to be successful in high school and beyond.*

### Instruction & Performance Data

#### Fall NWEA MAPs Assessment Reading

##### Bert Corona Charter High School



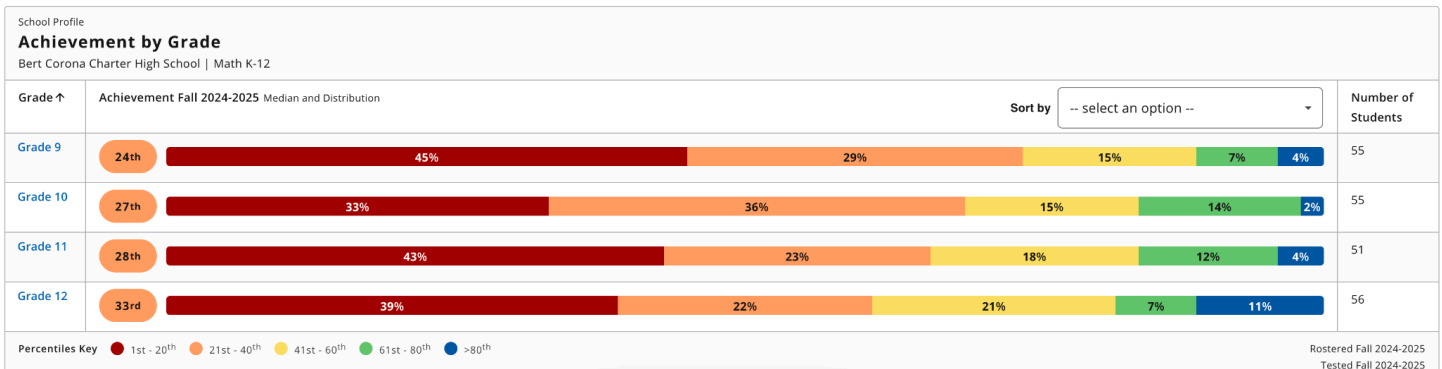
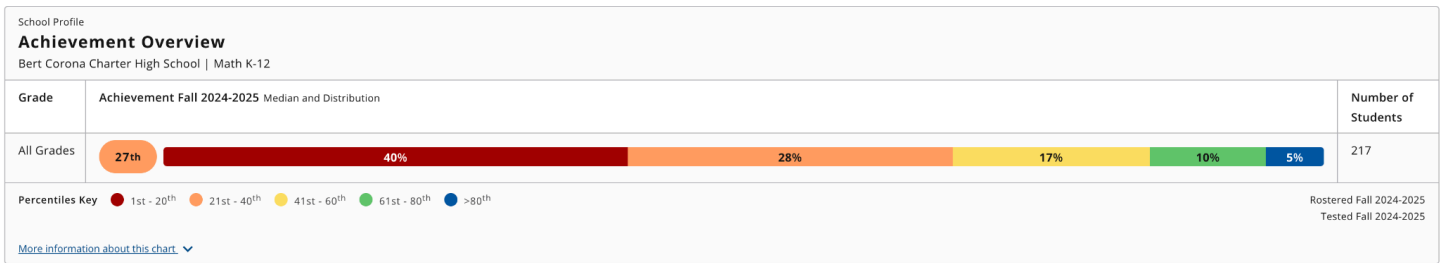
Overall, the results of the Fall diagnostic reading assessment show that 42% of the students are scoring at or above the average percentile.

- 9th, 10th, and 12th graders have a similar distribution of scores, with 43%, 41%, and 45% respectively, scoring at or above the average percentile.
- 11th graders have a slightly lower percentage of students scoring in the higher percentiles. 36% of 11th graders are scoring at or above the average percentile.



## Fall NWEA MAPs Assessment Math

### Bert Corona Charter High School



Overall, the results of the Fall diagnostic math assessment show that 32% of the students are scoring at or above the average percentile.

- 9th graders have 26% of students scoring at or above the average percentile.
- 10th graders have the third highest performance with 31% scoring at or above the average percentile yet the least percentage of students in the lowest percentile.
- 11th graders have the second highest performance with 34% scoring at or above the average percentile.
- 12th graders have the highest performance with 39% scoring at or above the average percentile.

## Fall Writing Performance Task

Overall, the 11th graders demonstrated significant challenges in organizing their writing and providing sufficient evidence and elaboration to support their arguments.

15% of students scored a 3 or 4, indicating adequate or strong performance in both Organization/Purpose and Evidence/Elaboration, most students struggled in these areas. 50% students scored below a 3, indicating significant weaknesses in their ability to structure their writing effectively and provide concrete evidence to support their claims.

To improve students' writing skills, teachers have developed a plan that incorporates several strategies. First, they will introduce structured writing exercises that emphasize the use of evidence-based arguments. This will help students understand the importance of supporting their claims with concrete evidence. Second, teachers will provide targeted feedback on the balance between opinion and textual support, guiding students toward more sophisticated writing. Third, peer review sessions will be implemented to foster a collaborative environment where students can learn from each other and refine their ability to present well-supported, coherent arguments. To further support students, teachers will utilize graphic organizers as a tool to help them organize their thoughts and then reference these organizers in their writing. Additionally, they will provide students with a template that clearly outlines the introduction, thesis, body paragraphs, and conclusion, forcing them to adhere to a structured essay format. By modeling this process and providing feedback on



drafts, teachers aim to equip students with the necessary tools to write effectively and achieve greater success on the CAASPP assessments and class assignments/projects .

11th Grade					
Score	Organization/Purpose		Evidence/Elaboration		
4	1	2%	1	2%	
3	7	13%	7	13%	
2	8	15%	8	15%	
1	9	17%	9	17%	
NS	12	23%	12	23%	

### College Readiness

#### Dual Enrollment

BCCHS's partnership with LA Mission College continues to provide students with great opportunities for learning and preparing them for College. Currently, 64 unduplicated students are dual enrolled at LA Mission College. 7 students are taking both classes. The following classes are being offered this semester:

Course Number	Course Title	Student Enrollment
AOJ- 1	Introduction to Administration of Justice	22
AOJ-075	Corrections	49

#### Professional Development

Counseling staff participated in the following learning opportunities:

- LA Mission College- Staff did resource mapping focused on supporting students to connect to campus resources and programs.
- USC Counselor Day- Staff was able to explore the application and review process, financial aid options, and meet with department faculty and staff

#### College Workshops for Parents

At the middle school:

BCCHS staff will be conducting college workshops on the last Friday of each month. On August 30th parents learned about the high school graduation and college entrance requirements. On September 27th, parents will learn about the 4 systems of higher education. The focus of this effort at the middle school is build a stronger pipeline of students that are College Ready and build strong relationships with students and families to support articulation and enrollment at BCCHS.

At the high school:

On September 10th, parents explored the A-G requirements and learned about the college application process and the importance of the Grade Point Average (GPA). On October 1st, parents will explore the 4 systems of higher education and receive an overview of financial aid.

### School Climate and Culture

#### PBIS Implementation



Positive Behavioral Interventions and Supports (PBIS) framework is the foundation of the work of the School Culture and Climate team. The foundation of PBIS on a school campus is the school wide behavior expectations. Behavior expectations represent the social, emotional, and behavioral skills you want to see from everyone in the building. Rather than focusing on what NOT to do, these expectations establish how TO do school in every classroom and common space. At BCCHS, our behavior expectations are known as the 3 B's: BE Safe, Be Responsible, and Be Respectful. Staff have worked to ensure that students and staff have access to what it looks and sounds like to a Knight at BCCHS. These efforts will enhance our PBIS implementation. We will report out on our PBIS implementation assessment (Tiered Fidelity Inventory) next month.



## Operations

### Acknowledgment

Many if not all of the positive changes that have happened with facilities is because of Ms. Peña's effort and communication. Ms. Isis Peña worked for 7 years as the YPI After School Coordinator at BCCS before joining the YPICS team. She moved from a Coordinator of After School Programs, to Program Coordinator, and is now the Coordinator of Operations at BCCHS. She has worked for YPCIS for 10 years, 10 months, and 21 days. Her greatest strength is her passion for supporting our students and community. Her second greatest strength is her tenacity which drives her effort to communicate consistently and effectively. Working with LAUSD Prop 39 requires tenacity and consistent communication over time.

### Facilities

The cost for the 23-24 Prop 39 agreement was reduced by \$13,569.28 after adding space that was not originally included and removing bathroom space that was not being used but included in the original 23-24 agreement/cost.

\$255,408.78	Total Cost of Exclusive and Shared Use Space in original Prop 39
\$241,839.50	Total Cost of Exclusive and Shared Use Space in original Prop 39 in Alternative Agreement
<b>\$13,569.28</b>	<b>Annual Savings with Alternative Agreement</b>

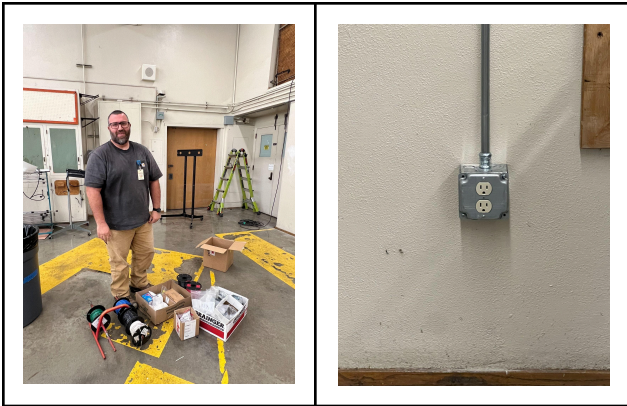
For reference, BCCHS was being charged for 1152.24 square feet of student and staff restroom space that BCCHS did not use. That space was removed from the 23-24 agreement and will not be included in future agreements.

2,052.90	Restroom Space in Original Prop 39
901.66	Restroom Space in Alternative Agreement
<b>1,151.24</b>	<b>Less Restroom Space in Alternative Agreement</b>



### Repairs

This summer we swapped spaces between the College Center (now in Room 47) and Media Arts Center (now in Room 46) to improve the use of space and increase the number of open meeting spaces for counseling and itinerant services (Special Education). The swap was a gamble because we needed the LAUSD to install additional electrical outlets for the Media Arts Center in Room 46. During the week of September 22, the LAUSD installed 12 outlets including one 240 outlet for our silk screening equipment. We have been trying to get the 240 outlet for over a year with no success. By swapping the space, LAUSD Prop 39 paid for the installation of all of the outlets because it is being used as a classroom. BCCHS cost was \$0.



### Enrollment

BCCHS is currently under enrolled by 10 students based on the 24-25 budget projection. During the first 2 weeks of school, BCCHS was 4 students over the 24-25 budget projection. At that time, other local charter high schools including Vaughn, PUC and the Alliance began admitting students from their waitlists and our enrollment numbers dropped by 14. Since the 2nd week of school, as in previous years, we continue to have students enroll and disenroll but they ultimately offset each other.

Grade Level	Enrollment 2023-24	Budgeted 2024-25	Actual Enrollment 2024-25	Difference from Budget
9th grade	58	65	58	-7
10th grade	51	57	57	0
11th grade	62	50	52	2
12th grade	54	61	56	-5
5th Year +	0	0	0	0
Total	225	233	223	-10