



Board Report Ruben Dueñas, Interim Executive Administrator May 20, 2024

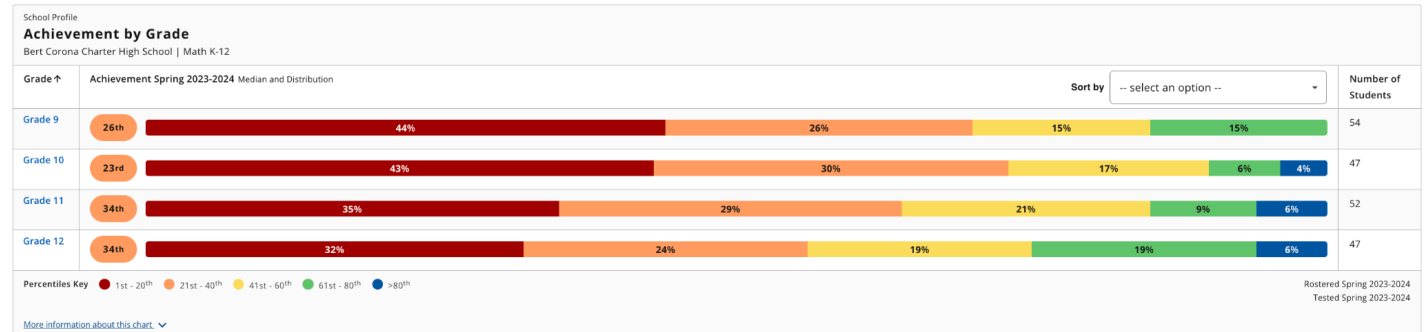
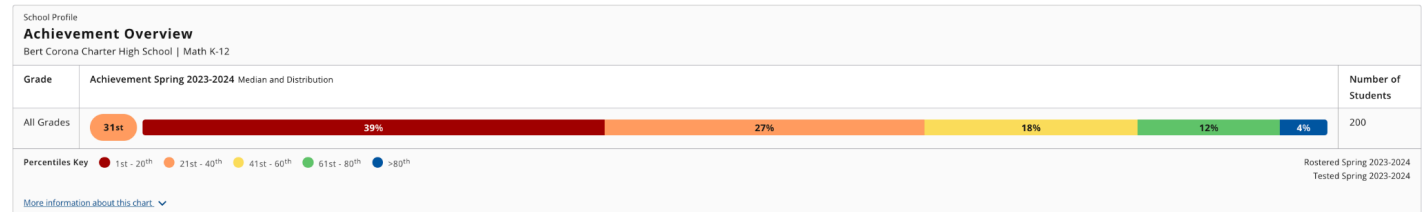
The mission of the YPI Charter Schools (YPICS) is to prepare students for academic success in high school, as well as post-secondary education; prepare students to be responsible and active participants in their community; and enable students to become lifelong learners. Students at YPI Charter Schools will become active citizens who characterize the ideals of a diverse and democratic society. Students will provide service to their community, take responsibility for their own learning, and develop the habits of mind and body that will empower them to be successful in high school and beyond.

Instruction & Performance Data

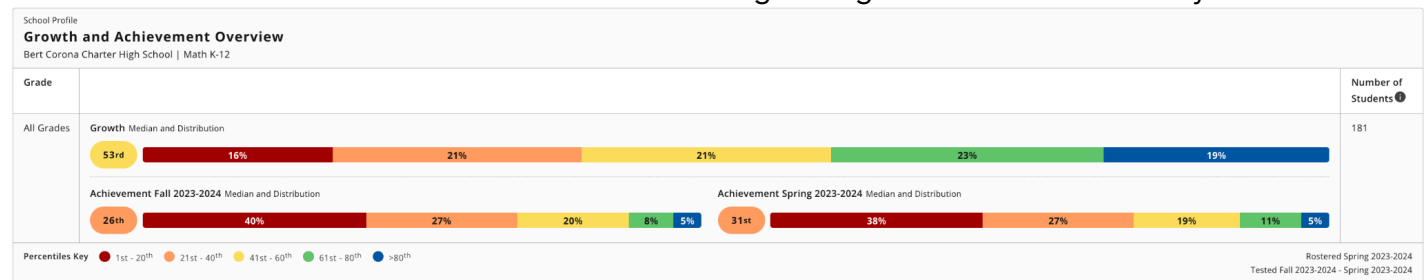
NWEA MAPs School Profile Spring Data

Math Single Term Achievement

34% of our students are near or above grade level in math. 18% are near or at grade level, 12% are at grade level, and 4 % are above grade level. The senior class has the highest proficiency of all grade levels with 44% of students near or above grade level. The 10th grade has the lowest with 27% of students near or above grade level.



63% of our students are close to or have exceeded their growth goal for the 23-24 school year in math.

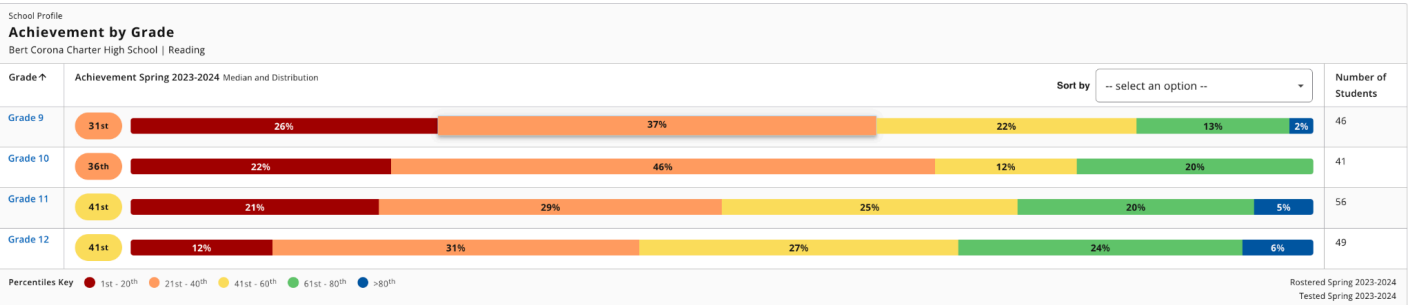
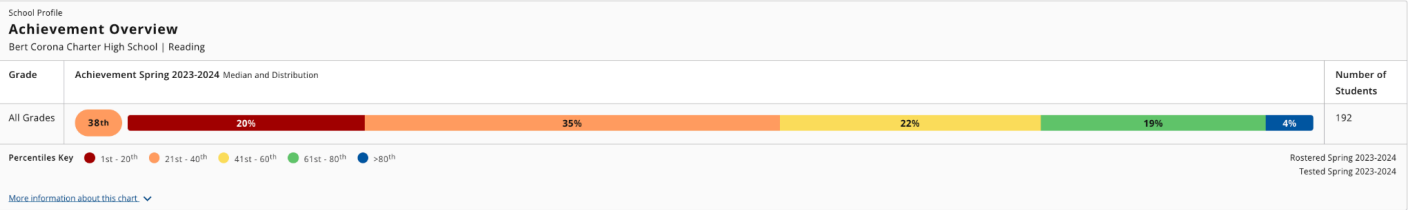


Reading Single Term Achievement Spring

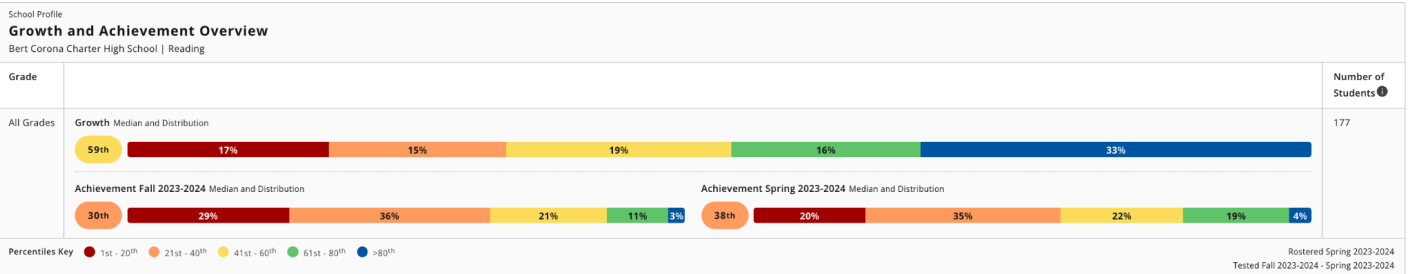
45% of our students are near or above grade level in Reading. 22% are near or at grade level, 19% are at grade level, and 4 % are above grade level. The senior class has the highest proficiency of all grade levels with 57% of students near or above grade level. The 10th grade has the lowest with 22% of students near or above grade level.



BERTCORONA CHARTER HIGH SCHOOL

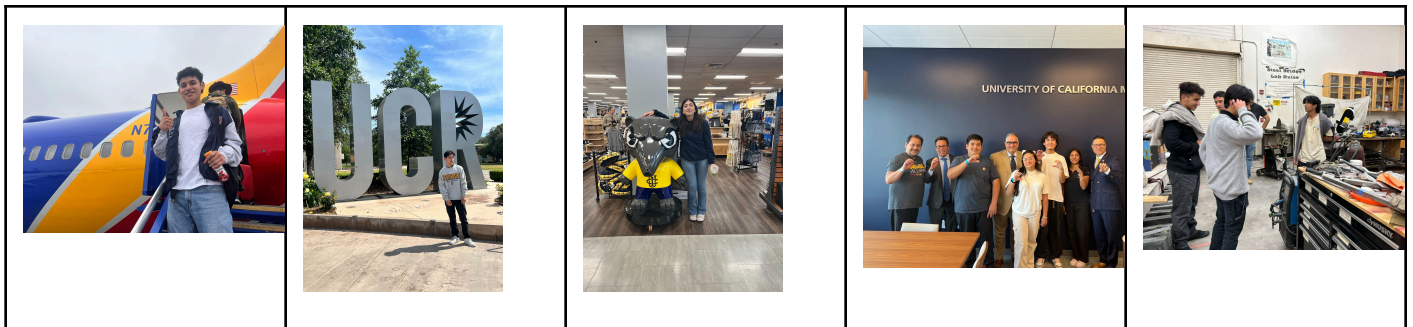


68% of our students are close to or have exceeded their growth goal for the 23-24 school year in Reading.



College Readiness

Our seniors are making their final decisions about which university they will attend in the fall. Nationwide universities are changing their decision days as a result of challenges students and families are having with completing the new FAFSA application. We continue to support and encourage our students to challenge themselves to select the best university for them. Staff committed this year to making sure that all students would visit any California school that they were considering as a final choice. Students made final visits to UC Davis, UC Riverside, UC Irvine, UC Merced, and CSUN. At UC Merced, students were able to meet with UC Merced Chancellor Juan Sánchez Muñoz and Regent John A. Pérez.



Culture & Climate

Sports

Boys Volleyball wrapped up their season with a tough loss to Community Charter. Our Knights led the match 2 to 0 but could not close the match and lost 3 to 2. The team left everything they had on the court and played their hearts out. They returned home proud of their efforts this season as individuals and as a



team. It was a year of learning and growth. All but one of the players will be returning for the next school year and volleyball season.



Community Schools

Drug Awareness Resources

BCCHS has been collaborating with the San Fernando Valley Partnership to support and educate our students about the negative effects of substance abuse. SFVP has been providing targeted group assistance for students for the past 6 months. Recently, SFVP placed a case manager on site to support students and staff. We look forward to more collaborative efforts to fortify our Tier I strategies and support with other social emotional learning opportunities.

Operations

Facilities

LAUSD has completed the roof and foundation repairs to rooms 10, 11, 12, and 13. Staff has worked for 1 ½ years to get these repairs funded and completed by the LAUSD. We do not expect to have any more issues with rain for the foreseeable future (in these rooms). This year our math and English teachers have been displaced for an average of one week per month from their classrooms.

We are currently negotiating our final Prop 39 space offer from the 24-25 school year and working to ensure that we maximize the use of space available for our school community for the best price. In the 24-25 school year, BCCHS will comprise 40% of the student population on the Maclay Campus.