

Executive Director's Report September 2020



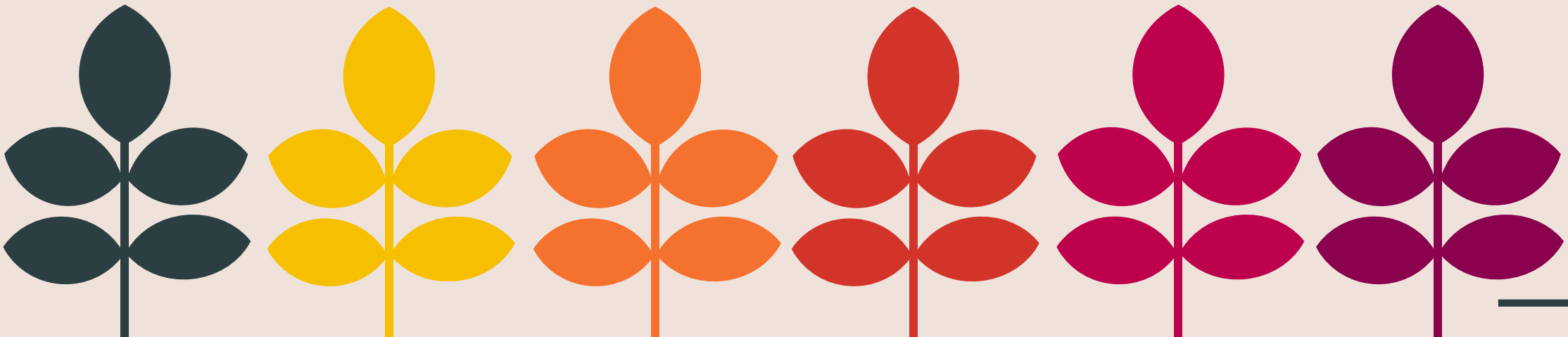
JenJene

Jenell Sherman



Falling into place...

- **Projects:**
 - Finished Learning Continuity Plans
 - Finalizing annual audit requests
- **Looking ahead:**
 - Charter Renewal - Due June 2021
 - Strategic Planning



Fall Happenings

STAR 360 Launch

360

Proof of Residency
collected from families

POR

Professional Development
with online vendors

PD

Email

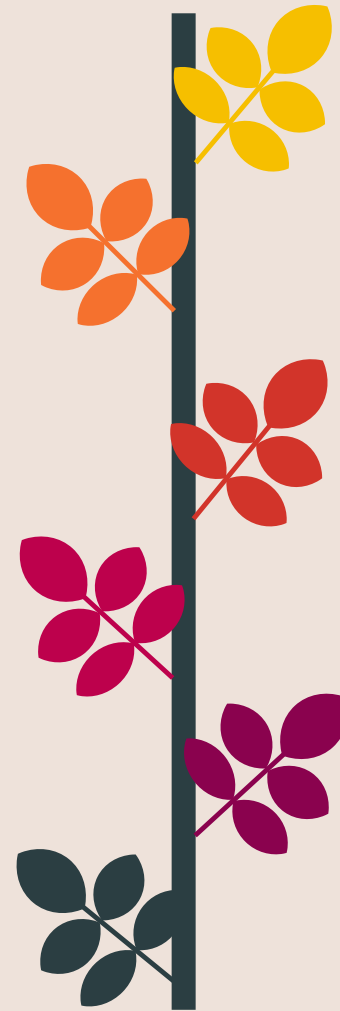
Email migration to
school-specific emails

CC

Community Connections
started

EWS

EWS system launch -
payroll, time off
requests, staff
attendance



Enrollment Report



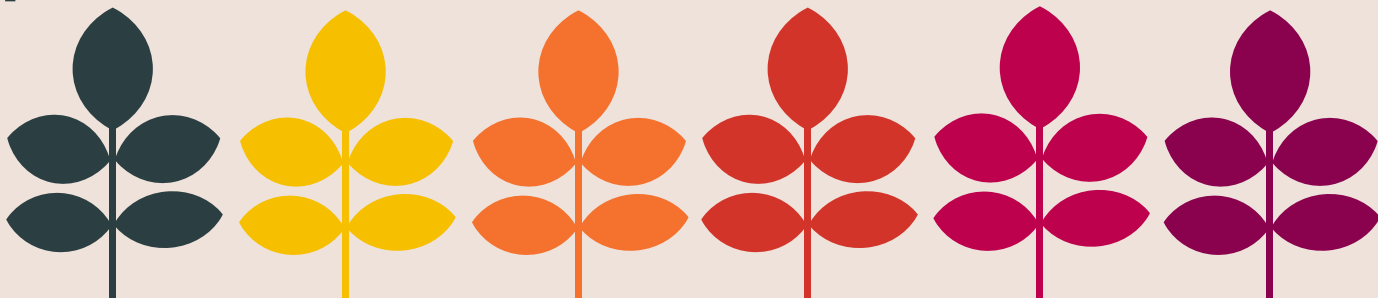
Enrollment Update from Principal

Feather River Charter School

Current Enrollment County by County/Gradelevel as of 09/17/20

Grade	Butte	Colusa	Placer	Sacramento	Sutter	Yolo	Yuba	Totals
TK	0	0	0	8	0	0	3	11
KN	0	0	5	40	2	12	7	66
1	0	0	7	49	1	13	12	82
2	0	0	9	65	2	9	14	99
3	1	0	8	62	2	8	7	88
4	0	0	9	67	3	16	12	107
5	0	1	10	54	0	6	2	73
6	0	0	7	59	1	8	12	87
7	1	0	12	45	1	13	6	78
8	0	0	11	53	1	11	6	82
9	0	0	9	44	0	11	8	72
10	1	1	7	54	1	8	3	75
11	0	2	14	46	2	5	3	72
12	1	0	3	40	0	2	6	52
Curent Total	4	4	111	686	16	122	101	1044
Annual Growth	-21	-4	-27	-42	-4	-9	-4	-167

Growth calculated from SY19-20 ending enrollment totals.



Thank you!

