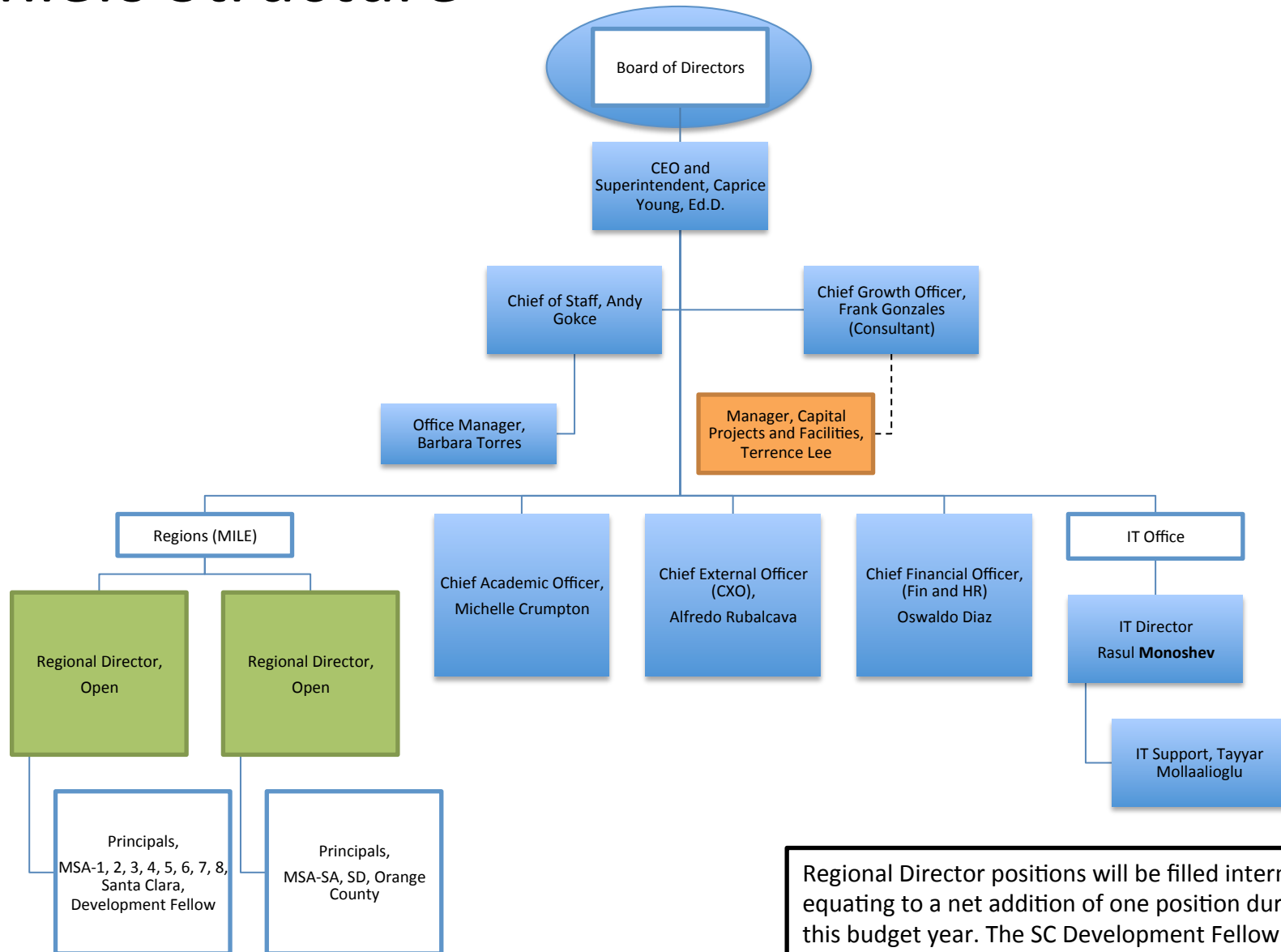


Magnolia Educational & Research Foundation (MPS)

2015-2016 Home Office Organizational Structure

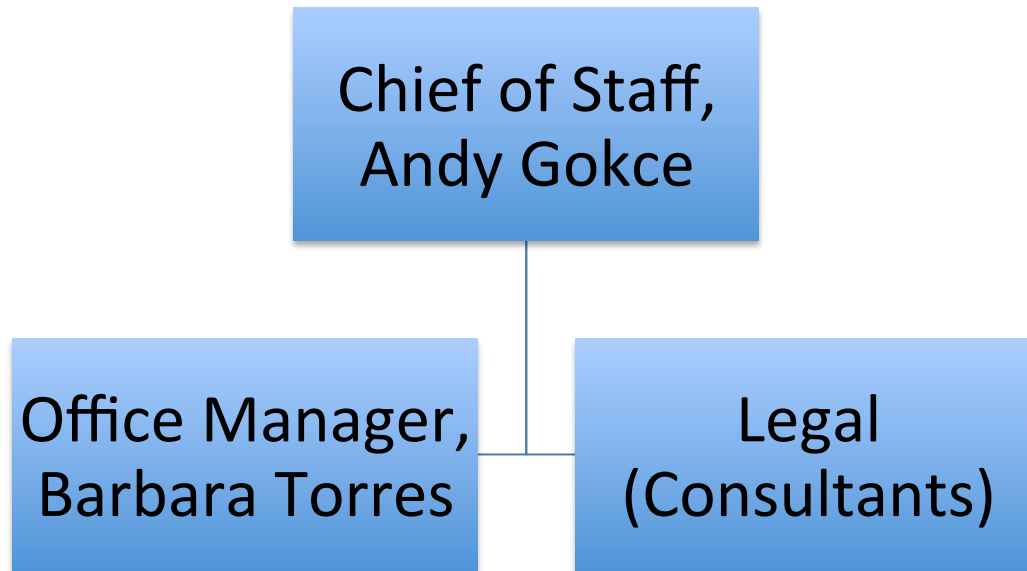
Revised November 12, 2015

Chiefs Structure



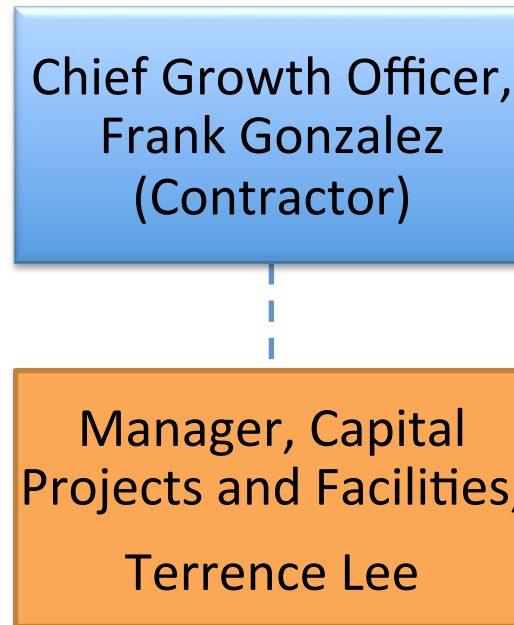
Regional Director positions will be filled internally equating to a net addition of one position during this budget year. The SC Development Fellow is budgeted in the home office.

Chief of Staff



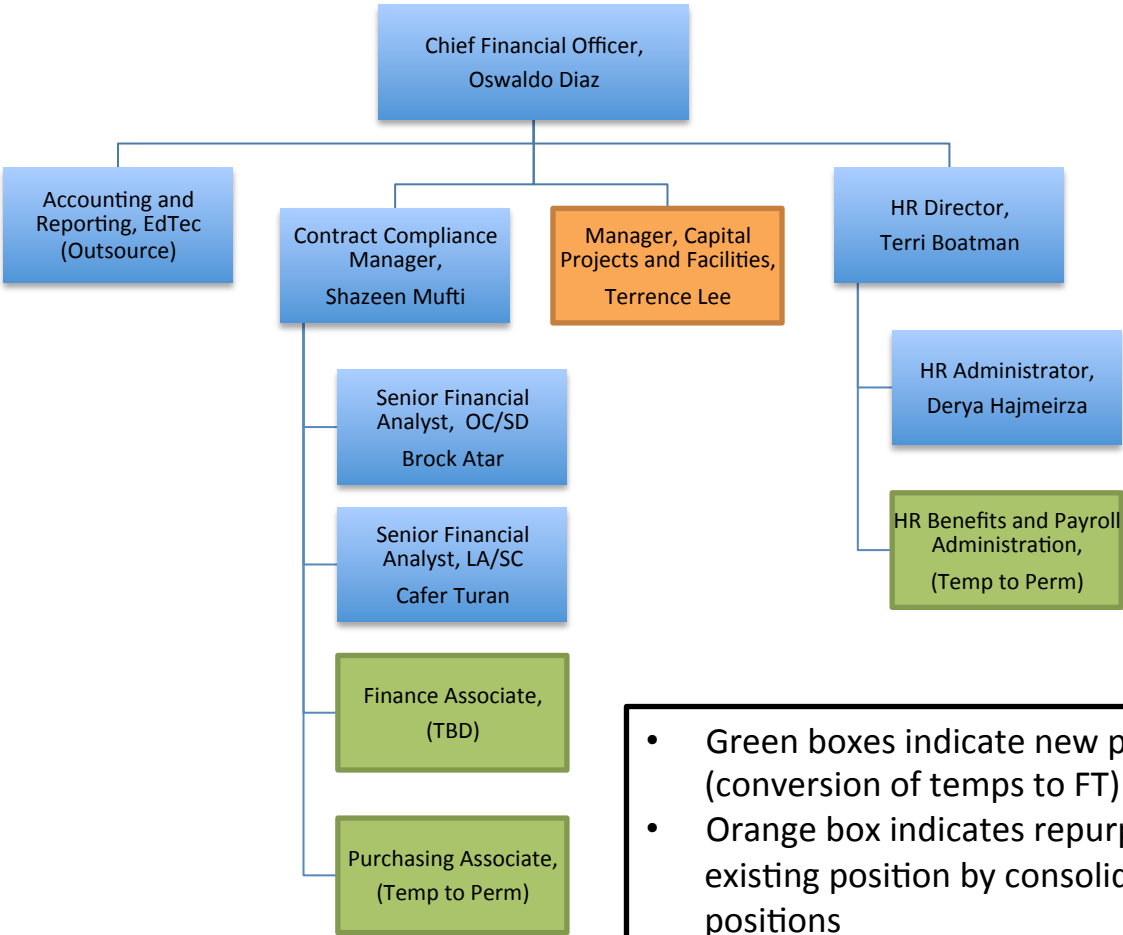
The Office of the Chief of Staff is responsible for board meeting management and support, Board on Track management, C-Team meetings, management of legal support, home office administrative support, and major initiatives requiring cross-departmental collaboration (some of which currently include: SC revenue recovery, internal policy development, student recruitment, and OC growth plan development).

Chief Growth Officer



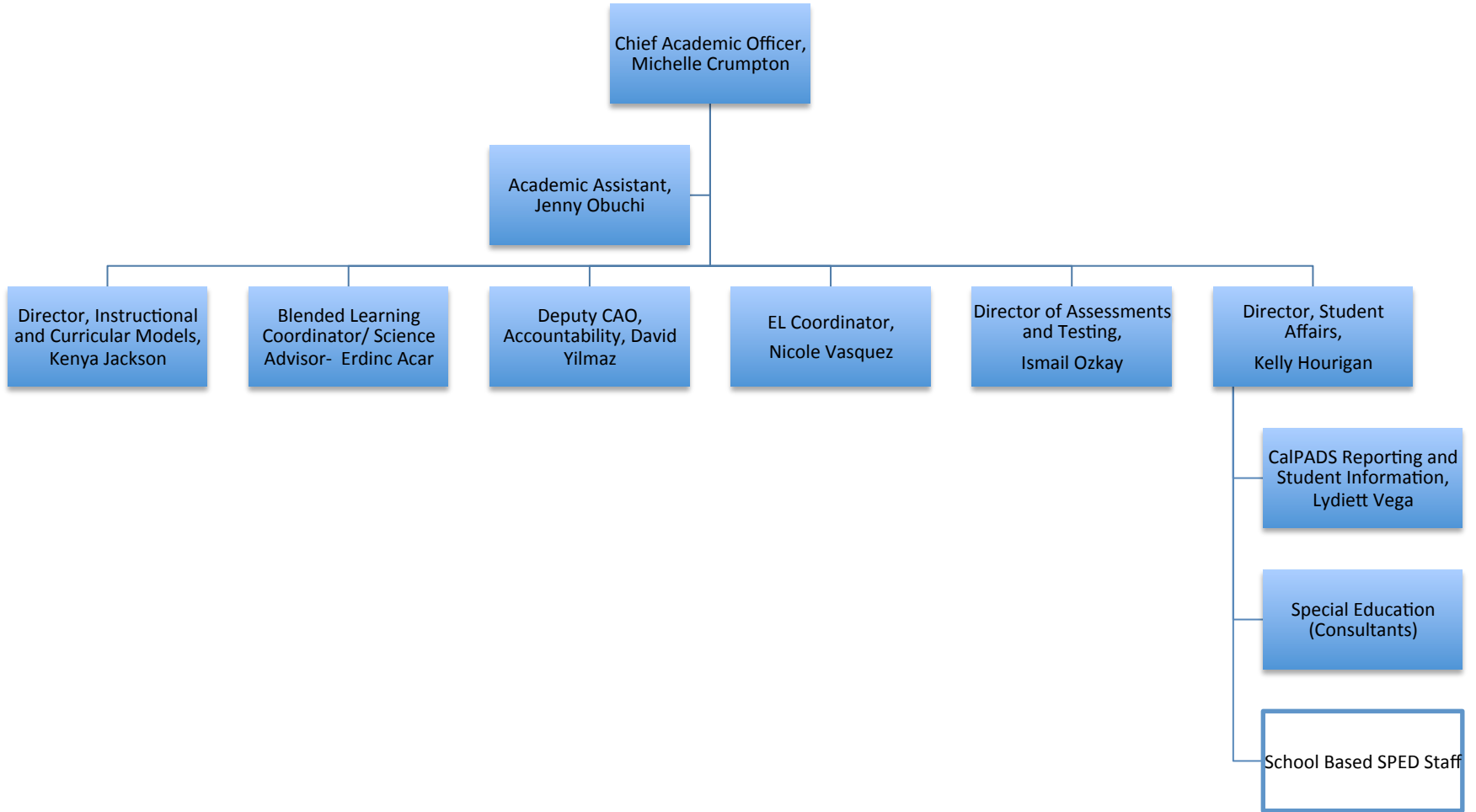
- Orange box indicates repurposing of existing position by consolidating two positions from finance. This is the same position identified on the CFO page.
- The CGO position is held by a consultant, therefore, has no direct reports and no benefits or overhead burden.

Chief Financial Officer



- Green boxes indicate new positions (conversion of temps to FT)
- Orange box indicates repurposing of existing position by consolidating two positions
- Net addition of 2 positions, with corresponding reduction in temp expenses

Chief Academic Officer



Chief External Officer

