



MAGNOLIA PUBLIC SCHOOLS

Board Of Directors

Board Agenda Item #	II D – Consent Agenda
Date:	June 14, 2017
To:	Magnolia Board of Directors
From:	Caprice Young, Ed.D. CEO & Superintendent
Staff Lead:	David Yilmaz, Chief Accountability Officer
RE:	Approval of Illuminate SIS Transition Plan

Proposed Board Recommendation

I move that the board approve the Illuminate SIS Transition Plan and costs associated.

Background

MPS has been using CoolSIS for our Student Information System and AP processing. Our 3-year contract with CoolSIS ends in October 2017 and has been submitted to the board for approval for 2017-18. MPS has vetted different vendors for our SIS needs for 2018-19 and beyond, including CoolSIS, Infinite Campus, and Illuminate. MPS has been using Illuminate’s Data and Assessment module during 2016-17 and considering using its SIS in conjunction with the Data and Assessment module to increase effective use of the program.

CoolSIS has been instrumental for MPS as it provides a basic SIS, with additional lunch and AP processing features, meeting our needs in the past. As MPS has increased its student population size and refined its academic programs, our needs and demands from an SIS have also evolved. We would like to have an SIS that can also support our data and assessment system which will enable our teachers to analyze student achievement and progress data conveniently within one platform. As also voiced by our school leaders and teachers, we would like our SIS to provide different grading options for our teachers, including mastery-based or standards-based grading. Our college counselors have consistently brought up the need for our SIS to handle graduation requirements and a transcript design that can accommodate unique situations, such as transfer of credits from other institutions, GPA calculations, and A-G tracking. Our deans of academics have been striving to find a convenient, user-friendly scheduling tool to create a master schedule that meets our students’ diverse needs. Our office managers would save time if we had more automated reports in our SIS to meet all reporting mandates.

Considering all the above needs and the huge cost of CoolSIS, MPS academic team has vetted CoolSIS, Infinite Campus, and Illuminate as candidates for our next SIS. Our deans of academics and principals have attended presentations by Illuminate. Our academic team also invited Infinite Campus for a presentation and received a proposal. In conclusion, after careful consideration, the Academic Team recommends “Illuminate Education” as our next SIS. Following is our comparison of Illuminate Education & CoolSIS:



MAGNOLIA PUBLIC SCHOOLS

13950 Milton Ave. 200B Westminster, CA 92683

P: (714) 892-5066 F: (714) 362-9588

	CoolSIS	Illuminate Education
Attendance	Has an attendance interface for teachers and office and provides ADA calculation and reporting	Has an attendance interface for teachers and office and provides ADA calculation and reporting
Parent Communication	Has parent communication module: grades, behavior, etc. are available in SIS and can also be communicated via email or text. CoolSIS also provides an app for phones and tablets.	Provides same communication options as CoolSIS does. Does have an app as well.
Master Scheduling	Does not have a scheduling program, but it has an interface to enter the master schedule after you design it elsewhere.	Provides a program which allows you to create the master schedule within the SIS, based on assigned courses and student choices, with different options. This tool will help our deans of academics tremendously with master scheduling.
Gradebook	Allows grading on a percentage or sum basis; does not have mastery-based/standards-based grading incorporated in the tool	Has built-in systems that allows different types of grading, including master-based/standards-based and other systems of grading
Transcript	The tool is not comprehensive enough and requires manual tweaks and updates and CoolSIS may charge for update requests	Provides a comprehensive system for student transcripts and GPA that will meet our needs
Data & Assessment	Does not have a data & assessment module (except for student assignment grades and manual entry of user-created fields)	Has a Data & Assessment module that works in alignment with the SIS. All student performance data can be stored and analyzed, including state testing, MAP tests, benchmark test results, etc. Illuminate's Data & Assessment module also allows teachers to create assessments from their question bank.
Student Behavior	Allows the user to enter student behavior entries and points	Has a comprehensive student behavior module that allows for different options to handle and report student behavior, giving breakdown of student behavior for analysis
Lunch Module	Has a basic lunch transaction module (Does not provide the	N/A Illuminate does not have a lunch



MAGNOLIA PUBLIC SCHOOLS

13950 Milton Ave. 200B Westminster, CA 92683

P: (714) 892-5066 F: (714) 362-9588

	reports needed for federal lunch reimbursement automatically. Office managers spend about two hours a day for lunch follow-up and reporting. To be fair, we do not expect an SIS to have a comprehensive lunch program.)	module. For this purpose, MPS has purchased Meals Plus school lunch software that covers every aspect of school meal management (point of sale, reimbursement reports, automated letters, etc.)
AP Processing	CoolSIS has a Business module that allows staff to enter their purchase and reimbursement requests.	N/A Illuminate is an SIS and does not have a business module. To be fair, we do not expect an SIS to handle AP processing. Magnolia Finance Dept. is currently exploring their options to find a comprehensive AP software.
License Fees	<p>\$2.50 per student per month (\$30 per student per year) Following is a comparison chart for an estimated number of students and staff for each site:</p> <p>SIS: (Based on # of students)</p> <p>MSA-1: 541 (\$16,230) MSA-2: 459 (\$13,770) MSA-3: 460 (\$13,800) MSA-4: 192 (\$5,760) MSA-5: 187 (\$5,610) MSA-6: 174 (\$5,220) MSA-7: 301 (\$9,030) MSA-Bell: 499 (\$14,970) MSA-San Diego: 427 (\$12,810) MSA-Santa Ana: 639 (\$19,170)</p> <p>TOTAL: \$116,370 per year</p> <p>Business Module: (Based on # of staff)</p> <p>Home Office: 32 (\$9,600) MSA-1: 47 (\$14,100) MSA-2: 41 (\$12,300) MSA-3: 42 (\$12,600) MSA-4: 17 (\$5,100) MSA-5: 16 (\$4,800)</p>	<p>\$7 per student per year</p> <p>SIS: (Based on # of students)</p> <p>MSA-1: 541 (\$3,787) MSA-2: 459 (\$3,213) MSA-3: 460 (\$3,220) MSA-4: 192 (\$1,344) MSA-5: 187 (\$1,309) MSA-6: 174 (\$1,218) MSA-7: 301 (\$2,107) MSA-Bell: 499 (\$3,493) MSA-San Diego: 427 (\$2,989) MSA-Santa Ana: 639 (\$4,473)</p> <p>TOTAL: \$27,153 per year</p> <p>SAVINGS OF: \$89,217 per year</p> <p>Business Module:</p> <p>N/A</p>



MAGNOLIA PUBLIC SCHOOLS

13950 Milton Ave. 200B Westminster, CA 92683

P: (714) 892-5066 F: (714) 362-9588

	MSA-6: 14 (\$4,200) MSA-7: 22 (\$6,600) MSA-Bell: 38 (\$11,400) MSA-San Diego: 40 (\$12,000) MSA-Santa Ana: 51 (\$15,300) TOTAL: \$108,000 per year	
--	---	--

Attached are CoolSIS agreement for 2017-18 and Illuminate’s proposal for 2017-18 and beyond. Illuminate’s proposal includes a transition plan that addresses set-up, data migration, admin bootcamp, and train-the-trainer local bootcamps to ensure successful transition into the new SIS.

In conclusion, we are asking the board to approve Illuminate Education as our new SIS and the transition plan thereof.

Budget Implications

Illuminate SIS and transition cost based on an estimate of 3,800 students:

- FY 2017-18 (TRANSITION YEAR): \$27,500 (Setup & Admin Bootcamp, Data Migration, Train-The-Trainer Local Bootcamps)

FY 2017-18 cost will be covered by the MERF Home Office. (BUDGETED)

- FY 2018-19: \$40,100 (FULL IMPLEMENTATION) (\$13,800 for 9 days of BootCamp and \$7 per student license for 3,800 students)

FY 2018-19 cost will be covered by the schools. (WILL BE BUDGETED FOR 2018-19)

- FY 2019-20+: \$7 per student license fee; \$26,600 for 3,800 students

FY 2018-19 and on, schools will incur the cost.

Name of Staff Originator:

David Yilmaz (Chief Accountability Officer) and Ismail Ozkay (Data Manager & SIS Coordinator)

Attachments

- Illuminate Education Proposal
- CoolSIS Agreement for 2017-18

Proposal

Magnolia Public Schools - ISI

Prepared For:

Magnolia Public Schools
Westminster, California

Prepared On:

4/28/2017

Prepared By:

Gary Hanson
ghanson@illuminateed.net
+1 9513149918

Illuminate Education, Inc.
6531 Irvine Center Drive, Suite 100, Irvine, CA 92618
Phone: 951-739-0186 | Fax: 909-266-1935
info@IlluminateEd.com | IlluminateEd.com



1. COMPANY VISION

Illuminate Education exists to create tools, services and training to promote educator and student success. By building a vibrant team, making technology useful in districts and classrooms, and investing in local communities, we look to empower people from all backgrounds to reach their full potential in school and career achievement.

At the heart of Illuminate are educators just like you: we are a team of former school administrators, teachers, district technologists, instructional coaches, special education instructors and curriculum directors. We are also seasoned designers and engineers who are passionate about building products to make your lives easier.

We have reached over 5 million users across 43 states including students, parents, teachers and administrators. We are proud to have partnered up with over 14,000 schools and 1,600 districts including Boston Public Schools, San Diego Unified, Denver Public Schools, Caddo Public Schools, Newton Public Schools, and Salt Lake City School District.

Illuminate Education is committed to equipping our communities to flourish in the school and workplaces. Together, we believe we can change the world of education.

2. PROPOSAL

Illuminate Education proposes a contract with Magnolia Public Schools. Although a contract may span multiple years, Magnolia Public Schools retains the right to opt out each year at no financial penalty. The proposal includes data import support, system maintenance, system support, and user support for the length of the contract. It also includes ongoing system upgrades at no additional cost to Magnolia Public Schools.

3. PRODUCT OVERVIEW

Illuminate Education is proud to offer Illuminate Student Information System (ISI), a platform that provides all school-site staff a single, web-based point of access to attendance, scheduling, grades, reporting and more. ISI anticipates the needs of all educators and removes the boundaries of the traditional student information system.

With our system, districts and educators can focus not just on compliance but student growth. Employing Web 2.0 technologies and a user-friendly interface, ISI supports all aspects of the education process: from district-level educators who need to analyze sweeping patterns and trends, to instructional leaders who require fast, flexible reports to shape curriculum and instruction in the classroom.

ISI is focused on being dynamic and providing all-around student data, which allows educators to leverage all available information to truly educate the whole child. Educators will have an all-in-one solution to support streamlined operations and effective decision-making at all levels.

4. PRICING

The student count numbers provided in this quote are estimated. The contract will use the prior fiscal year's Fall student count from the appropriate California state website. This proposal was created using the dates of 7/1/2017 through 6/30/2021. Illuminate recommends the following model for Magnolia Public Schools:

Implementation Phase

QTY	PRODUCT	DESCRIPTION	LIST	UNIT	TOTAL PRICE
3,800	ISI - Licenses	Per Student Licenses - Illuminate Student Information™ (ISI)	\$7.00	\$0.00	\$0.00
1	ISI Setup & Admin Bootcamp - Flat Rate	4-day bootcamp including pre & post-bootcamp implementation web support, guided system setup and configuration, and ISI System Admin training. Hosted at Illuminate HQ (Irvine, CA). Client responsible for travel & hotel accommodations.	\$4,000.00	\$4,000.00	\$4,000.00
1	ISI Data Migration Bootcamp - Flat Rate	4-day bootcamp including pre & post-bootcamp implementation web support, the data migration process, and training on ISI data tools and validation logs. Hosted at Illuminate HQ (Irvine, CA). Client responsible for travel & hotel accommodations.	\$1,000.00	\$1,000.00	\$1,000.00
5	ISI Train-the-Trainer Local (Full Day)	Full Day Train-the-Trainer On-site Training - Illuminate Student Information™ (ISI)	\$1,500.00	\$1,500.00	\$7,500.00
1	ISI Data Migration - Additional Support		\$15,000.00	\$15,000.00	\$15,000.00
				Total	\$27,500.00

Year 1

QTY	PRODUCT	DESCRIPTION	LIST	UNIT	TOTAL PRICE
3,800	ISI - Licenses	Per Student Licenses - Illuminate Student Information™ (ISI)	\$7.00	\$7.00	\$26,600.00
9	ISI Master Schedule Bootcamp (Per Site)	3-day bootcamp that guides site leaders through the data-informed process of collecting course requests, building the master schedule, and scheduling students. Hosted at Illuminate HQ (Irvine, CA). Client responsible for travel & hotel accommodations.	\$1,500.00	\$1,500.00	\$13,500.00
				Total	\$40,100.00

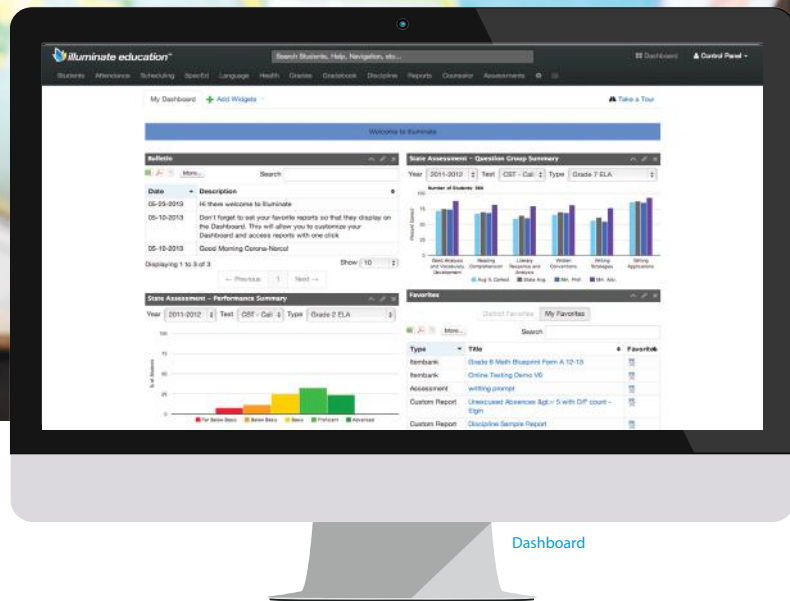
Year 2

QTY	PRODUCT	DESCRIPTION	LIST	UNIT	TOTAL PRICE
3,800	ISI - Licenses	Per Student Licenses - Illuminate Student Information™ (ISI)	\$7.00	\$7.00	\$26,600.00
				Total	\$26,600.00

Year 3

QTY	PRODUCT	DESCRIPTION	LIST	UNIT	TOTAL PRICE
3,800	ISI - Licenses	Per Student Licenses - Illuminate Student Information™ (ISI)	\$7.00	\$7.00	\$26,600.00
				Total	\$26,600.00

STUDENT INFORMATION SYSTEM



"When I walk into a classroom or visit a school a teacher always approaches me and says something like, 'Wow!! Illuminate is so user friendly. I love the reports, or I love the gradebook, or I love how easy report cards are now, or that assessment stuff is really cool! I can't wait to use it more.' Illuminate really is changing the face of education through technology."

Rufus Thompson
(Technology
Coordinator, Mountain
View School District)

Illuminate Student Information™ is the "next generation" Student Information System (SIS) that provides all district and school site staff with a single, web-based point of access to student demographics, attendance, scheduling, discipline, grades, assessment history, state reporting mandates, report cards, parent portal, student portal, gradebook, reporting, and more.

User-personalized **dashboards** with any data.

Create **custom reports/forms/letters/labels** with simple point-&-click/drag-&-drop (no queries).

Powerful and easy-to-use **master scheduler, walk-in scheduler**, and tools to give students exactly what they need.

Reduce data entry: **parent and student portals** communicate information and facilitate data entry and data validation.

Most common educator feedback: "It's just **so fast and easy to use.**"

Everything you need in an SIS, **simply** and **effectively.**

FEATURES

Attendance

- By Roster
- By Seating Chart
- Robust Attendance Reporting
- Notifications/Attendance Letters

Scheduling

- Walk-In Scheduler
- Advanced Master Scheduler
- Robust Scheduling Reports

Grades

- Notifications
- Reporting
- Incident Tracking Management
- Graduation Requirement Tracking
- Gradebook
- A-G reporting
- Customizable GPA Management
- Customizable Transcripts

Powerful Reporting

- Charting and Graphing Capabilities
- Custom Label Design and Generation
- Customizable Dashboard
- Customizable Student Profiles
- Sortable Prebuilt Reports
- Drag and Drop Customizable Form Letters
- Complete State Data and Reporting

Discipline

- Notifications
- Reporting
- Incident Tracking Management

Health

- Customizable Student Health Profiles
- Complete Immunizations Tracking and Reporting
- Blue Card
- Auditing
- Student Screening
- Mass Screening
- Health Plans

Parent & Student Portals

- Includes Parent and Student Messaging
- Includes Links to Curriculum Resources
- On-line Student Registration

Report Cards

- Standards-based/Common Core

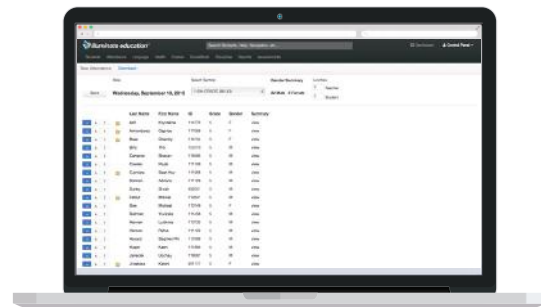
And . . .

- Program and Intervention Management
- Custom Alerts and Notifications
- Early Warning Identification System (On Track)
- Complete RTI Functionality and Reporting
- Direct Links to Curriculum Resources
- Customizable Student Demographics Profile
- Create Unlimited Custom Demographic Data Elements
- Mass Email Notifications
- Customizable Student Registration
- Counselor Log
- Student Notes

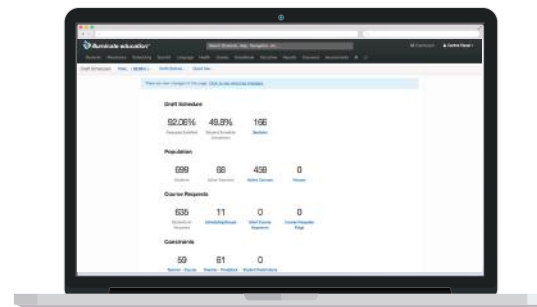
GradeBook Module



Attendance Module



Scheduling Tool



Student Portal

