



MAGNOLIA PUBLIC SCHOOLS

Board Of Directors

Board Agenda Item #	V A
Date:	April 21, 2016
To:	Magnolia Board of Directors
From:	Caprice Young, Ed.D., CEO & Superintendent
Staff Lead:	Kenya Jackson, Interim CAO
RE:	Academic Update

Board of Trustees Academic Update 4.11.16

Kenya Jackson- Interim Chief Academic Officer

Updates:

- Parent and Student Surveys sent and returned by April 11th
- LAUSD report will be available for us by mid-April

Major Academic Initiatives

APRIL 2016

1. Summer School Identification- need of remediation from final grades
2. STEAM EXPO on April 30th at the Long Beach Convention Center
 - SBAC window opens
 - Mock AP testing
 - WASC School Visits
 - CST- science test
 - Surveys to be returned by end of April
 - Coordination of Central Office/ Board Members elected for participation in graduation
 - Students choose electives for new school year to aide with master scheduling
 - Merge coaching doc with observation forms

MAY 2016

1. AP Exams
2. Spring MAP
3. Graduation
4. LCAPS Finalized
5. Review SBAC
6. Student Handbook Approval
7. Master Schedules should be updated and verified
8. Identified open spots for the upcoming year
9. Physical Course Catalog for our families including online offerings
10. Create transition manuals for incoming middle school students



A. Description of Firm

1. Provide a brief description of your organization stating your full legal name and address, and, if applicable, the branch office or other subordinates that will perform, or assist in performing, the work hereunder. Indicate whether it operates as an individual, partnership, or corporation. If, as a corporation, include the state which it is incorporated. If appropriate, state whether your firm is licensed to operate in the State of California. This description should include the number of years your firm has been in business providing the test management tool and assessment services detailed herein, total number of employees, organizational structure of the firm, and a recent financial statement.

Name: Lane Rankin, CEO/President

Email: Lane@illuminateEd.com

Phone: (951) 739-0186 or (949) 242-0343

Fax: (909) 266-1935

Federal Tax ID: 80-0419525, we are licensed to do business in CA.

Note: Illuminate Education Inc. (and no lower division or subsidiary) is completing and submitting this Proposal.

Illuminate Headquarters Orange County Office (Contact's Address):

Illuminate Education
60 Bunsen Road
Irvine, CA
92618



Inland Empire Office:

Illuminate Education
22365 Barton Road
Suite 113
Grand Terrace, CA
92313



History

Illuminate Education Inc. was formed by **Achieve! Data Solutions** (ADS) founders (and **creators of DataDirector**) Lane Rankin, Chris Walker, and Mark Walls to provide the next generation of web-based software and services to the K-12 market. With the founding of Illuminate, this team now has **sole control over its products and direction**.

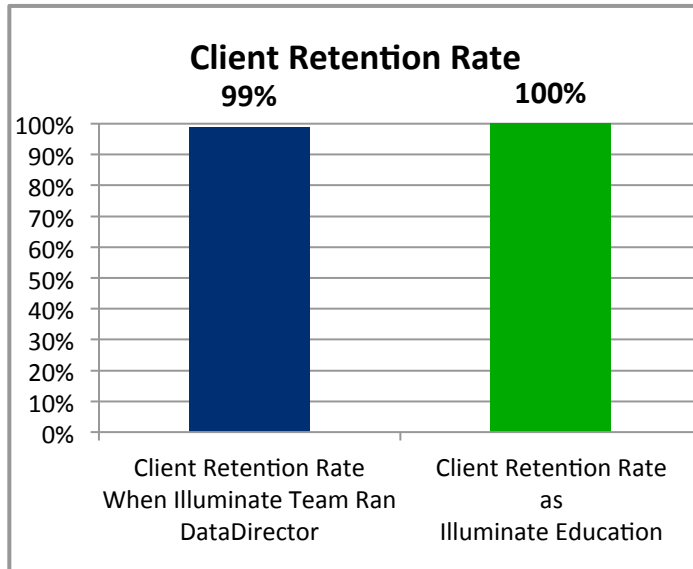
Illuminate's roots go back to 13 years ago, when a group of California educators, technologists, and software engineers founded ADS with the vision of creating groundbreaking education software

products to support district and site administrators, teachers, students, and parents in using and understanding critical data. Having been teachers, county and district administrators, and university instructors themselves, the team understood how the fragmentation and segmentation of data was making it difficult for other educators to make critical decisions accurately and efficiently. In response, ADS created DataDirector, the data management and assessment system that put the power of data into the hands of users in a completely web-based and easy-to-use system.

Illuminate Education Inc. was founded in June of 2009, now giving the team sole control over its products and direction, as a national company. Education reacquired two key products from the DataDirector Suite after initially selling them to Houghton-Mifflin Harcourt: Illuminate Student Information System (formerly *Iris*) and Illuminate Special Education System (formerly *Focus*). We enhanced those products into the groundbreaking systems of today. We also developed a far more enhanced data and assessment management system: Illuminate Data and Assessment Management System™ (*DnA*). The team that introduced market-leading DataDirector is now proud to introduce the next generation Student Information System, Special Education System, and Data and Assessment Management System, all operating off a single system.

Illuminate Education is not only picking up where ADS left off, but is also taking a big step forward by creating a single centralized solution for data and information management to support all aspects of the education process. Illuminate has gained experience in the educational software industry by providing web-based database driven solutions to the K-12 and higher education markets. When ADS was sold (including DataDirector, Illuminate Special Education, and Illuminate Student Information System) to Harcourt in February of 2007, our team worked as Harcourt employees until February 2009.





When running DataDirector, the Illuminate team supported **over 400 districts** and maintained a 99% client retention rate. Now that we have formed Illuminate Education, over 100 districts joined us within our first year of business, and we have continued to grow to **377 districts** while maintaining a **100% client retention rate**. We have experienced no terminations for default, settlements, nor do we have any pending terminations.

Due to the successful sale to Harcourt, our team has gained not only financial resources, but also

experience, connections, partnerships, and technology know-how. With these attributes, Illuminate Education achieved the resources necessary to make Illuminate DnA and other products future market leaders. Our business philosophy is to create affordable, easy to use software and build partnerships with counties and districts that last a lifetime. We are a **company of educators** excited about the prospect of helping CNUSD continue to be a leader in using software to help students succeed.

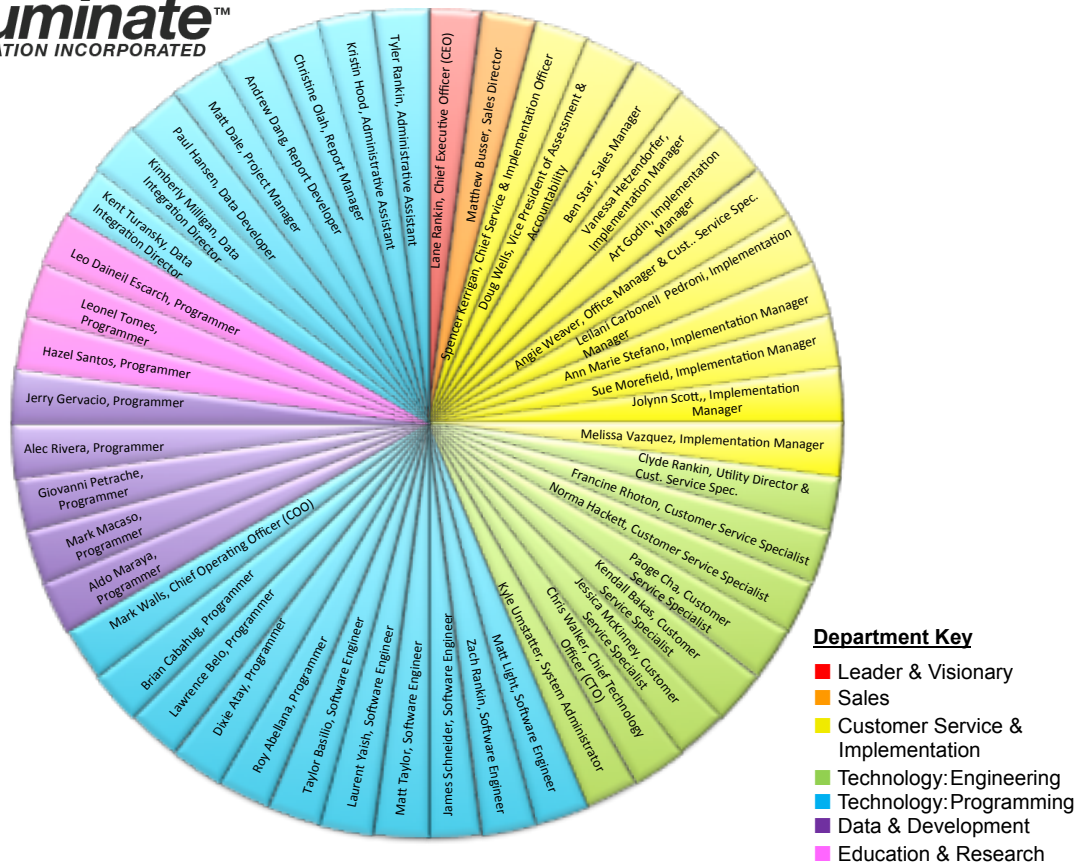
Personnel

All Illuminate team members have shirts bearing a quote from a famous educator that reflects the passion behind our streamlined efforts:

“Never doubt that a small group of thoughtful, committed citizens can change the world. Indeed, it is the only thing that ever has.”

- Margaret Mead

Illuminate employs 45 full-time (and 0 part-time) team members. Our organizational structure follows a unique format involving a high level of ownership and accountability from every employee:



2. **Termination of Agreement and or Inability to Fulfill Requirements:** If the Proposer has had an agreement terminated, or has a pending termination, or a settlement to avoid litigation or termination for default during the past five (5) years, all such incidents must be listed and explained.

Termination for default is defined as notice to stop performance due to the Proposer's non- performance or poor performance, and the issue was either: (a) not litigated; or (b) litigated and such litigation determined the Proposer to be in default.

- a. The Proposer shall submit full details, as allowed by law, of all terminations for default, settlements, or pending terminations experienced in the past five (5) years including the other party's name, address, and telephone number. The Proposer shall also present its position on the matter. The DISTRICT shall evaluate the facts and, at its sole discretion, may reject the Proposer's response if the facts discovered indicate that completion of an agreement resulting from this RFP may be jeopardized by selection of the Proposer.

- b. **If the Proposer has experienced no such settlement or terminations for default in the past five (5) years, and it has no pending terminations, it must affirmatively declare so.**

Illuminate maintains a **100% client retention rate**. We have experienced no terminations for default, settlements, nor do we have any pending terminations.

A. Costs and Pricing

Our pricing is very straightforward. The **per-student cost** available to all clients is never bloated by “hidden fees” other vendors use to increase cost. For example, **Illuminate charges no additional fees for:**

- Software
- Hardware
- Implementation
- Standard data conversion
- Standard data integration
- Annual fees
- Installation set-up fees
- Shipping
- Internet access
- Security
- Project management
- Hosting
- Travel expenses
- Maintenance
- Customer service or technical support
- Help documentation and videos
- Hidden third-party software products
- Upgrade fees



Pricing for this Proposal

Costs for School Year 1 (Based on 53,500 Students and 10 Training Days)			
Description	Cost	Taxes	Extended Cost
Illuminate Data and Assessment Management and GradeCam and Key Data Systems INSPECT Itembank	\$5.50 per student	\$0	\$294,250
Illuminate Data and Assessment Management and GradeCam and NWEA Item Bank	\$6.90 per student	\$0	\$369,150
<i>Included:</i> Illuminate Gradebook	\$0	\$0	\$0
<i>Included:</i> Illuminate Standards-Based Report Cards	\$0	\$0	\$0
<i>Included:</i> Illuminate Home Connection Parent and Student Portal	\$0	\$0	\$0
<i>Included:</i> Activate Instruction (available for testing in March, 2013)	\$0	\$0	\$0
<i>Included:</i> Illuminate Itembank	\$0	\$0	\$0
Product Subtotal:			With INSPECT- \$294,250 With NWEA- \$369,150
<i>Optional Cost:</i> Staff Training (Client chooses # of days; 10 days are given here as example)	\$1,500 per day	\$0	\$15,000
Total Cost:			With INSPECT- \$309,250 With NWEA- \$384,150

Please remember, there are no additional costs for system licensing fees, data conversion, implementation, travel and per diem, documentation, and maintenance. There is also no additional costs for suggested software modifications that will help other clients, as well (Illuminate has *never* charged a client for suggested software modifications it has incorporated into the system). Training costs are free for CNUSD and the number of training days may be determined/adjusted by CNUSD.

Costs for School Years 2-5 (Based on 53,500 Students and 0 Training Days)			
Description	Cost	Taxes	Extended Cost
Illuminate Data and Assessment Management and GradeCam and Key Data Systems INSPECT Itembank	\$5.50 per student	\$0	\$294,250
Illuminate Data and Assessment Management and GradeCam and NWEA Item Bank	\$6.90 per student	\$0	\$369,150
<i>Included:</i> Illuminate Gradebook	\$0	\$0	\$0
<i>Included:</i> Illuminate Standards-Based Report Cards	\$0	\$0	\$0
<i>Included:</i> Illuminate Home Connection Parent and Student Portal	\$0	\$0	\$0
<i>Included:</i> Activate Instruction (available for testing in March, 2013)	\$0	\$0	\$0
<i>Included:</i> Illuminate Itembank	\$0	\$0	\$0
Total Cost:			With INSPECT- \$294,250 With NWEA- \$369.150

Please remember, there are no additional costs for system licensing fees, data conversion, implementation, travel and per diem, documentation, and maintenance. There is also no additional costs for suggested software modifications that will help other clients, as well (Illuminate has *never* charged a client for suggested software modifications it has incorporated into the system). Training costs are free for CNUSD and the number of training days may be determined/adjusted by CNUSD.

Breakdown of Costs and Inclusions

This proposal includes the following features and components, which are all part of the Illuminate Data and Assessment Management, available for **\$5.50/\$6.90 per student per year**:

Assessment and Summary Assessment Management	While assessment data can also be imported, assessments (assignments, formative or summative assessments, quizzes, exams, etc.) are easy to create, access, and share in DnA. Questions can be linked to any number of standards. Answer keys can be inputted, uploaded, or (if GradeCam is used) scanned. Answer sheets are easily generated in a pre-identified or blank format. The same answer sheets can be laminated and used all year to reduce TPSD's paper costs. Summary Assessments are also easy to create, and any DnA assessment can populate custom and pre-built (e.g., item analysis) reports.
GradeCam	DnA integrates with GradeCam to provide instant formative feedback. In fact, the whole process is so easy that most students can place their answer sheets in front of the camera to instantly see their own mastery of concepts. If TPSD also opts to use our parent portal and/or gradebook, the assessments results can upload to those, as well. In addition, since GradeCam hardware is so much more affordable than scanning (e.g., most webcams already housed on laptops and computers can be used, or one can be purchased for each classroom at little expense, since even the \$7 HD Skype camera works well with GradeCam), every teacher can and student can quickly see his or her results without leaving the classroom and can respond immediately to results.
Illuminate Itembank	Use items to create assessments, add and edit items (multiple choice, open/constructed response, rubric-based, etc.), and share items with colleagues and even other educators throughout the world. Use free Illuminate Itembank items, create your own, or use those from a vendor. Create and/or link to passages, add diagrams and images, use or include distractor rationales and difficulty ratings, and more. Generate assessment booklets using a variety of templates and options.
Integration with Other Vendors' Item Banks	DnA can integrate with item bank vendors that utilize QTI format, and any finished assessment (i.e., using questions from any source) can be uploaded as a whole to DnA and used with DnA. For example, DnA has completely integrated Action Learning Systems, Curriculum Associates, Intel-Assess, and Key Data Systems benchmarks and items into the DnA system. DnA reports display items' standards-based results and rationales for distractors (i.e., why students answered the way they did).
Online Testing	While you are free to use the full realm of scanning options, Illuminate DnA also includes online testing at no additional charge. Students and parents may access online assessments via Student Portal and Parent Portal, and educators may access all the assessment reports that are automatically populated in the Illuminate system.
Standards Support	State standards are built into DnA, where they can easily be linked to any assessment (assignment, formative or summative assessment, quiz, exam, etc.)
Student Demographic Management	Just as users are able to view and report on any demographic data in the system, demographics and other data are easy to add. Users can also incorporate these into reports.
Pre-Built Reports	Our prebuilt reports support a host of analysis needs, such as cross-sectional data analysis (like subgroup performance at varied levels). With DnA there is no need to run multiple reports with various filters to compare data sets. Comparisons are made easy, and charts and graphs highlight key data. Developed from an educator's perspective, DnA anticipates the needs of users and provides reports to meet those needs. For example, many educators misread CST cluster performance and mistake a student's highest score as his or her strength. Thus a report provides instant comparison to State Minimally Proficient performance to highlight probable strengths and weaknesses. In addition, analysis guidelines are provided within report footers (as well as within the "Data Analysis" chapter of our help manual) to discourage the misinterpretation of results.

Custom Reporting Tool	<p>Custom report tools are built into the DnA system. No one should have to write queries to get data, or to run multiple reports to compare datasets like subgroups. DnA is flexible and powerful enough for users to build custom reports that are not possible (or too cumbersome) in other systems. Imagine this: you can “drag and drop” columns to arrange your layout (no having to number and renumber columns); you can select (via mouse click) all desired data on one screen (no having to click to add a column, search for one piece of data, submit, and then repeat); you can group and change the format of all data on one screen (for example, you can decide to group students by language proficiency and grade, then average their language assessment scores and specify that these scores are displayed with 3 decimal places); you can share the report with any users; and you have comprehensive and easy-to-find access to any data in the system (e.g., for assessments, demographics, scheduling, etc.).</p>
INSPECT Itembank	<p>INSPECT® from Key Data Systems is composed of items written to assess the California Content Standards as well as the Common Core State Standards. Professional item writers focus on writing quality items that have content accuracy, range in cognitive complexity, and meet grade level standards. Items also include clear rationales for why a student would pick each wrong answer. For this reason, all wrong answers are created based upon the most likely cognitive disconnect in learning. Rigorous field-testing and item analyses are conducted to ensure the quality of the items in the INSPECT® test bank. Currently, there are over 42,000 California Content aligned items in INSPECT®, with 10,000 mathematics and 5,000 ELA Common Core State Standard aligned items. New items are added on a continual basis. INSPECT® began its first phase of development in the Summer of 2003. The main focus was to create items to assess the California Content Standards in ELA spanning grades 2-11, and mathematics spanning grades K-7, Algebra I, Geometry, and Algebra II. Since that time, we have expanded the range of grade levels and content areas to include ELA and mathematics for grades K-1, probability and statistics, history/social science, and science. The cost of INSPECT® is \$1.50 per student.</p>
NWEA Itembank	<p>Northwest Evaluation Association (NWEA) is a global not-for-profit educational services organization dedicated to the belief that assessments should make a difference for students. NWEA devotes extensive resources to research and development and better ways to gather data to improve instruction and increase student learning. Since delivering its first computerized adaptive test in 1986, NWEA has continued to grow its assessment offerings, research activities, and professional development services in support of its mission: Partnering to help all kids learn. To this end, NWEA purchased the <i>Formative Assessment Item Bank (Item Bank)</i> that was originally developed by Educational Testing Service (ETS). NWEA continues to contract with ETS to help maintain and enhance the <i>Item Bank</i>. The cost of the NWEA Itembank is \$2.90 per student.</p>
Illuminate Gradebook	<p>Illuminate Gradebook is a full-featured grading application integrated with the rest of the Illuminate system and used to record, report, and monitor student performance. Illuminate Gradebook is normally included with Illuminate Student Information, which is <i>normally</i> \$10 per student per the first school year and \$5 per student per each additional school year. However, Illuminate Gradebook is being included for free with this Illuminate Data and Assessment Management Proposal if TPSD opts to use it.</p>
Illuminate Standards-Based Report Cards	<p>Illuminate grade and report card features allow you to generate individual and/or multiple transcripts, generate traditional and/or standards-based report cards using the district’s own templates and allowing for customizable grading periods for teacher grading, customize multiple GPA calculations according to an individual district’s requirements, set up other course requirements, permit multiple ranking of classes based on certain criteria, monitor student performance by varied entities (district-wide, school-wide, etc.) and levels (clusters, standards, etc.), report on pre-ID and standardized test data (e.g., state tests, local, etc.), and maintain State and Federal reporting data, including Enrollment Reports, R-30 language census, class size reduction information, etc. Illuminate Standards-Based Report Cards are normally included with Illuminate Student Information, which is <i>normally</i> \$10 per student per the</p>

	first school year and \$5 per student per each additional school year. However, Illuminate Standards-Based Report Cards are being included for free with this Illuminate Data and Assessment Management Proposal if MCS opts to use it.
Illuminate Home Connection Parent and Student Portal	Illuminate Home Connection parent and student portal provides easy-to-use communication tools that empower students, parents, teachers, and administrators to work together to improve student achievement. Illuminate Home Connection is integrated with the rest of the Illuminate system (e.g., assessment results populate the Illuminate Gradebook, display on the portal, etc.). Illuminate Home Connection is normally included with Illuminate Student Information, which is <i>normally</i> \$10 per student per the first school year and \$5 per student per each additional school year. However, Illuminate Home Connection is being included for free with this Illuminate Data and Assessment Management Proposal if TPSD opts to use it.
Business Intelligence (BI) Tool	For more advanced users who want to add graphics to their own pre-built reports, our Integrated Business Intelligence (BI) reporting module takes data analysis to the next level.
Data Management	Imported, inputted, and scanned data (e.g., demographic, state and local assessments, scheduling, etc.) is immediately available to users. DnA's prebuilt and custom reporting tools make it easy to view, disaggregate, aggregate, and analyze assessment results and trends. If the data is in the system, it can populate both custom and pre-built reports.
Illuminate Early Warning System	Illuminate Early Warning System (OnTrack) - OnTrack is a system developed to identify students who are potential high-risk candidates for drop out or failure. Districts can generate a student 'score' that corresponds to different 'bands' (similar to performance bands) they have set up in their system. Once these 'bands' are set up and data is configured, the system will calculate all of a student's data (Ex. Attendance is 10% of score, Discipline is 20%, etc.) and place students in the 'band' corresponding to their score. The system then allows users to generate a variety of reports the district can use to identify these at-risk students.
Program Management	Students can be added to programs (e.g., Intervention) to monitor over time. This can be done at any user level, and programs can be selected for reporting purposes (in fact, you can even generate a report first and then use it to add students to a program based on key data).
User Support	DnA features comprehensive and searchable help documentation that is always just one click away from any DnA screen. It includes training videos, step-by-step instruction, and screen capture images. Technical support (online and by phone) is available to all users at no additional charge.
User and Permissions Management	TPSD will have the ability to manage usernames, passwords, and user data in DnA via online tools (a password retrieval system is also included). Extensive permission management allows users to access student data based on assigned permission levels.
Software License	TPSD maintains an Illuminate Data and Assessment System™ (DnA) software license for the length of the contract.
Hosting	Illuminate offers to host the solution at no additional cost. Whether the client prefers a client-hosted or vendor-hosted approach, Illuminate will support either.
Data Security	Illuminate uses the highest level of web security to protect all data. Server loads are regularly monitored to ensure performance. Critical system security events immediately generate email notifications to warn against possible intrusions. Application level errors also generate email notifications for development staff that may be used for troubleshooting.
Import and Export	All data (e.g., demographic, state and local assessments, scheduling, etc.) can be imported into the SQL database. DnA has the ability to perform field-level imports and exports of data into XML, CSV, DBF, char-delimited formats, etc. Data from MS Excel and Access Database can also be directly imported, and all data tables can be downloaded to Excel, pdf, tab delimited, and XML.

Breakdown of *Optional* Features and Costs

CNUSD may also opt to include any of the following in its contract:

<p>Illuminate Student Information System</p>	<p>Any data housed in your Student Information System (SIS) can be integrated with <i>DnA</i>. If you prefer to use Illuminate's SIS tools (e.g., gradebook, parent portal, attendance, discipline, grades, report cards, health, etc.) rather than those you currently use, <i>DnA</i> includes the option of integrating Illuminate Student Information. The cost for Illuminate Student Information is normally \$10 per student per the first school year and \$5 per student per each additional school year, but since you are also purchasing Illuminate <i>DnA</i> the cost would be reduced to \$7 per student per the first school year and \$3 per student per each additional school year. If you use Illuminate's full suite of products (<i>DnA</i>, our SIS, and Illuminate Special Ed.), you can essentially (and affordably) use one cohesive system for all your data requirements (i.e., Illuminate Education's suite of products can be CNUSD's one-stop shop for comprehensive data reform). Or you can pick and choose whichever modules you'd like. Complete installation or phased in module by module, Illuminate works seamlessly with other systems to meet all your data and assessment management needs.</p>
<p>Illuminate Special Education</p>	<p>If you prefer to use Illuminate's Special Education tools (e.g., writing IEPs, Medicaid billing, etc.) rather than those you currently use, <i>DnA</i> includes the option of integrating Illuminate Special Education (at a cost of \$15 per student per school year). If you use Illuminate's full suite of products (<i>DnA</i>, our SIS, and Illuminate Special Ed.), you can essentially (and affordably) use one cohesive system for all your data requirements (i.e., Illuminate Education's suite of products can be CNUSD's one-stop shop for comprehensive data reform). Or you can pick and choose whichever modules you'd like. Complete installation or phased in module by module, Illuminate works seamlessly with other systems to meet all your data and assessment management needs.</p>
<p>Data Conversion and/or Cleanup</p>	<p>CNUSD may opt to pay for an Illuminate representative to visit its site to submit data conversion files on its behalf for a one-time cost of \$1,500. This includes one day of services. If any additional hours of data cleanup (or additional data services) are required, the cost is \$120 per hour.</p>
<p>Customizations Unique to Client</p>	<p>There are no charges for customizations (i.e., the cost is already included in the per student per year charge) if the request also benefits other Illuminate <i>DnA</i> clients. If not, changes would cost \$120 per hour involved in creating the modification. However, with Illuminate <i>DnA</i> (as well as with DataDirector when our team ran it), we have never charged for modifications, since all requested customizations of those systems were able to benefit other districts.</p>
<p>Training and Professional Development</p>	<p>Customizable training is available and can be done in person at a rate of \$1,500 per day or online via GoToMeeting at a rate of \$500 per day. Illuminate training documentation, provided in an electronic format, would become the property of CNUSD.</p>



**Magnolia Public Schools
Westminster, California**

Data and Assessment Management System

Proposal

Prepared: 2/22/2016

Expires: 3/23/2016

Serves: 3,600



Overview

Illuminate Education Inc. (Illuminate) proposes to implement and support Illuminate Data and Assessment System™ (DnA) at Magnolia Public Schools, which serves approximately 3,600 students in Westminster, California.

DnA is a web-based and longitudinal system designed to meet the data and assessment needs of all Magnolia Public Schools staff: from School level educators who need to analyze trends, to instructional leaders who require fast and flexible reports to shape curriculum and instruction, to teachers who need to create assessments with ease and get instant feedback for formative use in the classroom. With robust reports, innovative custom reporting tools, built-in analysis support, and a groundbreaking approach to assessment, DnA anticipates users' needs and removes the boundaries of their old data system.

Illuminate proposes a contract with Magnolia Public Schools for a term of 3 year(s), though Magnolia Public Schools retains the right to opt out each year at no financial penalty. The proposal includes data import support, system maintenance, system support, and user support for the length of the contract. It also includes ongoing system upgrades at no additional cost to Magnolia Public Schools.



Inclusions

This proposal includes:

Dashboard	<ul style="list-style-type: none"> ▪ Personalized dashboard for every user ▪ Easy access to assessments, reports and class rosters
Assessments	<ul style="list-style-type: none"> ▪ Benchmark, Summative and Formative Assessments ▪ Assessment reporting by User, Site and District Level ▪ Align assessments to State and Common Core standards ▪ Scan and score assessments using a web camera, document camera or paper scanner ▪ Assess students online or using paper and pencil
INSPECT Item Bank	<ul style="list-style-type: none"> ▪ Access to 47,000 professionally written standards based questions ▪ Over 33,000 Common Core aligned items ▪ Grade and Subject level CST aligned blueprint assessments ▪ CAHSEE, and CELDT assessments ▪ Draft benchmark assessments for all grade levels ▪ ELLA (CELDT-preparation) assessments ▪ Constructed Response, Technology Enhanced, Media-Interactive, Non-Traditional Selected Response items for CCSS
GradeCam	<ul style="list-style-type: none"> ▪ Use a web camera to scan student assessments ▪ Provide instant feedback for formative and summative assessments
Activate Instruction	<ul style="list-style-type: none"> ▪ Direct links from student assessments to standards based curriculum resources. ▪ Direct links from teacher reports to standards based curriculum resources
Pre-Built Reports	<ul style="list-style-type: none"> ▪ Student, Teacher, Site and District level reporting ▪ State accountability / Common Core ▪ Special Education ▪ English Learners
Custom	<ul style="list-style-type: none"> ▪ Point and click report building

Reporting	<ul style="list-style-type: none"> ▪ Business Intelligence (BI) tool for higher level reporting
Student Groups	<ul style="list-style-type: none"> ▪ Students can be added to programs (e.g., Intervention) to monitor over time ▪ Create Groups, by individual students, custom reports, grade level or program
Gradebook	<ul style="list-style-type: none"> ▪ Record, report and monitor student performance ▪ Calculate grades from points, percent or score ▪ Individual users can customize the layout and functionality ▪ Options for categories, weights, dropping scores, custom marks, notes, and auto fill. ▪ Share Gradebooks among users and easily transfer grades from one user to another. ▪ Audit log of all changes and score recovery
Grades and Report Cards	<ul style="list-style-type: none"> ▪ Generate traditional and/or standards-based report cards using the District's own templates ▪ Customize multiple GPA calculations according to District's requirements ▪ Permit multiple ranking of classes based on certain criteria ▪ Monitor student performance and levels using clusters, standards, etc.



Magnolia Public Schools may opt to include any of the following in its contract:

<p>Customizations Unique to Client</p>	<p>There are no charges for customizations (i.e., the cost is already included in the per student per year charge) if the request also benefits other Illuminate DnA clients. If not, changes would cost \$120 per hour involved in creating the modification. However, with Illuminate DnA (as well as with DataDirector when our team ran it), we have never charged for modifications, since all requested customizations of those systems were able to benefit other districts.</p>
<p>Training and Professional Development</p>	<p>Customizable training is available and can be done on site at a rate of \$1,500.00 per day or online via GoToMeeting at a rate of \$500 per day. Illuminate training documentation, provided in an electronic format, would become the property of District.</p>
<p>Illuminate Student Information System</p>	<p>Magnolia Public Schools may opt to pay for Illuminate Student Information System (at a cost of \$8.00 per student for the first year and \$4.00 per student for each additional year). Illuminates (ISI), tools include health, attendance, scheduling, transcripts, discipline, gradebook, report cards, parent portal, student portal and State reporting. Illuminate Education's suite of products can be Magnolia Public Schools 's one-stop shop for comprehensive data reform, or you can pick and choose which modules use. Modules can be purchased at the beginning of your contract or can be phased in module-by-module.</p>
<p>Illuminate Special Education System</p>	<p>District may opt to pay for Illuminate Special Education System (at a cost of \$15.00 per special education student per year). Illuminate (ISE) tools include forms for writing IEPs, IFSP, REED, Evaluations, Encounter tracking, SPP Indicator tracking, IDEA requirements/data, NCLB regulations / data Medicaid billing, and State Reporting tools. Illuminate Education's suite of products can be District's one-stop shop for comprehensive data reform, or you can pick and choose which modules use. Modules can be purchased at the beginning of your contract or can be phased in module-by-module.</p>



Data Import

Illuminate will import all data Magnolia Public Schools would like to have in DnA.

Illuminate can import Magnolia Public Schools's clean data at no additional cost, but Magnolia Public Schools will have access to online import tools if its wishes to control its own data imports. Please note that Illuminate charges \$120 per hour for any data cleanup required.

If Magnolia Public Schools opts to have Illuminate import its data, Magnolia Public Schools will provide the data files in tab delimited, comma delimited, or Excel format, and the file layouts must be consistent with Magnolia Public Schools data requirements and Illuminate-defined file formats. It usually takes a minimum of 2 weeks to a maximum of 6 weeks to import all data, depending on the provided data's quality.



Primary Contact

Name:	Gary Hanson
Email:	ghanson@illuminateed.net
Address:	Illuminate Education Inc., 6531 Irvine Center Drive, Suite 100, Irvine, CA 92618
Phone:	(949) 656-3133
Fax:	(909) 266-1935



Illuminate recommends the following model for Magnolia Public Schools:

Cost Year 1			
Description	Cost	Taxes	Extended Cost
Data and Assessment Management Systems Including Gradecam, Inspect System Item Bank	\$6 per Student (3,600 Students)	\$0	\$21,600.00
Training DnA	\$1500 per Day (3 Days)	\$0	\$4,500.00
Total Cost:			\$ 26,100.00

Cost Year 2			
Description	Cost	Taxes	Extended Cost
Data and Assessment Management Systems Including Gradecam, Inspect System Item Bank	\$6 per Student (3,600 Students)	\$0	\$21,600.00
Total Cost:			\$21,600.00

Cost Year 3			
Description	Cost	Taxes	Extended Cost
Data and Assessment Management Systems Including Gradecam, Inspect System Item Bank	\$6 per Student (3,600 Students)	\$0	\$21,600.00
Total Cost:			\$21,600.00

Discovery Stage

Typical Timeline

1 to 2 meetings completed within two weeks

Team Members

Illuminate Implementation Manager
Superintendent or Designee
Curriculum leader(s)
Assessment leader(s)
Technology leader(s)
Other key administrators

Primary Objectives

- Install "Implementation Science Framework" to drive successful implementation
- Establish district implementation team
- Establish District assessment leadership team
- Outline goals and priorities for implementation, determine size and scope of implementation
- Design short & long term implementation plans with tactics & strategies



Installation Stage

Typical Timeline

Will vary due many factors. Expect minimum of 8 to 12 weeks.

Team Members

Illuminate Implementation Manager
Assessment Leadership team
Illuminate data team

Primary Objectives

- Establish school-level "Assessment Leadership Teams" & develop school data leaders
- Generate buy-in & communication plans, organize across levels and sites
- Determine measures of implementation quality & fidelity
- Develop coaching and support plan
- Data integration, system configuration, quality assurance
- Initial staff training by role (system management, teaching staff, administration)



Initial Implementation Stage

Typical Timeline

Will vary due to many factors. Expect year one as a minimum

Team Members

Illuminate Implementation Manager
District Leadership team
School Leadership teams
Coaches

Primary Objectives

- Users begin to implement new practices
- Additional training provided on system
- Data utilization training for teams and individuals
- Coaching and support provided to staff
- Monitor & audit feedback, adjust to unanticipated issues



Full Implementation Stage

Typical Timeline

2 full years of implementation

Team Members

Illuminate Implementation Manager
District Leadership team
School Leadership teams
Coaches

Primary Objectives

- Users establish standard practices implemented with fidelity
- Coaching & support is refined
- Additional modules or functions are made available to users with training
- Expand and replicate as required
- Review & modify long-range implementation plan



Innovation Stage

Typical Timeline

3 full years of implementation to establish

Team Members

Illuminate Implementation Manager
District leadership team
School Leadership teams
All users

Primary Objectives

- Best practices are implemented with fidelity across settings
- Innovate new practices to improve student outcomes
- Refine practices and procedures to improve efficiency
- Institutionalize to make robust to turnover