



| | |
|----------------|---|
| Agenda Item: | IIA: Discussion Item |
| Date: | <i>November 9, 2023</i> |
| To: | Magnolia Educational & Research Foundation dba Magnolia Public Schools (“MPS”) Academic Committee (the “Committee”) |
| From: | Alfredo Rubalcava, CEO & Superintendent |
| Staff Lead(s): | <i>Erdinc Acar, Deputy Superintendent, and Chief Academic Officer</i> |
| RE: | Academic Updates |

Action Proposed for Board Recommendation:

None, Information Only

Background:

MPS Chief Academic Officer and members of the Academic Team will provide an update to the Academic Committee Members on events and activities regarding the academic program and services organization-wide.

Budget Implications:

N/A

Exhibits:

- Academic Updates PowerPoint



Academic Committee Meeting

**Academic Updates
November 9, 2023**

Agenda



- General Updates
- Recognitions
- Assessment Results
 - 2022-2023 CAASPP Results (ELA, Math, Science EL Learners)
 - 2023-2024 FALL NWEA MAP Results (Reading and Math)
- Instructional Programs and Support
 - New Teacher Programs
 - Instructional Rounds - School visits and classroom observations
- Student Attendance and School Climate Data





2023-24

MPS Recognitions





Out of 25000 High Schools in 50 States

MSA-SA -
No. 47 in
California, No. 358
in national
rankings



MSA-2 -
No. 162 in
California, No.
1045 in national
rankings



MSA-1 -
No. 194 in
California, No.
1240 in national
rankings



CA MTSS Pathway Certification Completers



Alaina Scott
Alejandra Ayala
Allison Kitchen
Anita Padilla
Assiye Dumlu
Barbara Wyner
Bonny Skolnik
Candice Zakka
Christian Banda
Ciderio Flores
Claudia Garcia
Cynthia Evans
Daniel Aburto
Daniel Lockman
Diana (Chrissy)
Harris
Dohee Ahn
Eboney' Mackey
Erica Castro
Feyza Aksu

Filis Deniz
Gabriela Magana
Holly Thomas
Irma Warburton
Isa Kilic
Jacob Chucker
Jae Lee
Jaqueline Mendez
Jasmin Gomez
Jenn Rivera
Jennifer Allen
Jessica Gonzalez
Jessica Perez
Joanna Young
John Davis
Jorge Gonzalez
Juan Gonzalez
Kaitlyn Lupo
Karina Martinez

Karla Tobar
Kim Geiger
Krystal Zavala
Latif Arslan
leonard Lendor
Lexee Hutchens
Lisa Kirkey
Lori Friedlander
lubna abdallah
Manoush Castaneda
Marilyn Alas
Marilyn Hawkins
Marlene Castaneda
Maurice Myers
Michael Han
Monica Feldman
Nataly Birrueta
Olivia Mairs
Patricia Towey

Priscilla Garcia
Raimundo Lee
Rebecca Hoffman
Rebecca Lamadrid
Samir Bryman
Sarah Current
Sarah Kim
Sou Hong
Spencer Solomon
Taline Esser
Teresa Santos
Tiana Santos
tiffany shepard
Tisian Nealy
Trayza Tawadrous
Vanessa Muniz
Vanessa Sirault
Zehra Mercan

#CAMTSS
ALL MEANS ALL

Topic Awards

-  **Increasing Family & Community Engagement**, presented by Kohl's
-  **Improving Nutrition & Food Access**
-  **Implementing Local School Wellness Policy**
-  **Enriching Health Education**
-  **Bolstering Physical Education & Activity**
-  **Strengthening Social-Emotional Health & Learning**, presented by Harmony SEL at National University and Kaiser Permanente
-  **Cultivating Staff Well-Being**, presented by Harmony SEL at National University and Kaiser Permanente
-  **Promoting Tobacco-Free Schools**
-  **Supporting School Health Services**



2023 ALL-STAR AWARDEE

Proud to be one of
**AMERICA'S
HEALTHIEST
SCHOOLS**

Awarded by Alliance for a Healthier Generation



Alliance for a Healthier Generation Recognition

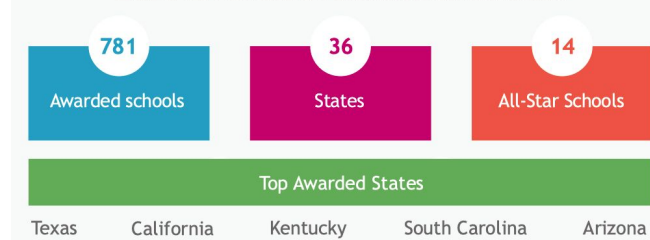


- **Family & Community Engagement**
- **Social-Emotional Health & Learning**



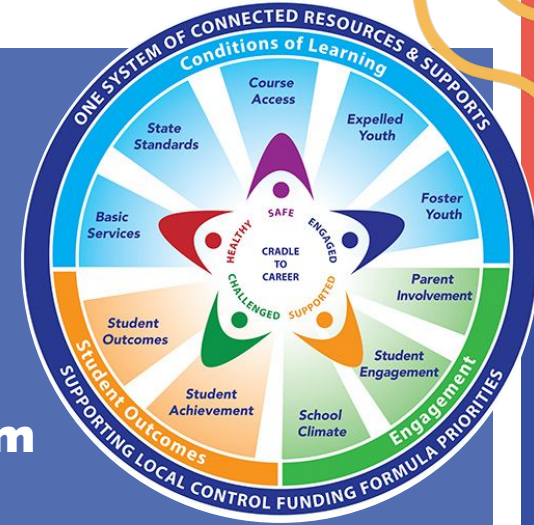
- **Family & Community Engagement**
- **Physical Education/Physical Activity**

2023 America's Healthiest Schools



RECENT GRANTS

- **College and Career Access Pathways (CCAP)**
 - **MSA-3 & Santa Ana**
- **Middle School / Early College High School**
 - **MSA-1, 2, 3, 5, & Santa Ana**
- **California Community Schools Partnership Program**
 - **Implementation: MSA 1-3, 5-8 and Santa Ana**
 - **Planning: MSA SD**
- **Arts Advancement: MPS**
 - **Philharmonic Society of Orange County's Strike Up the Band Grant**
 - **MSA-SA**





Fall Symposium



- 384 MPS employees
 - 89% attended including the Home Office
- 24 Sessions
 - Artificial Intelligence
 - Project Based Learning
 - Next Generation Science Standards
 - New Math Instructional Materials
 - Classroom Management
 - CharterSafe Employment
 - Community Schools
- Departmental Collaborations
- Massage Chairs
- 81% Satisfaction rate
- 98% thought the event was organized
- 95% thought the staff was friendly

2023 CAASPP Results - ELA



| SBAC Historical Proficiency Rates - ELA (3-8,11) | | | | |
|--|---------------|---------------|---------------|-----------------------|
| | 2019 | 2022 | 2023 | Change (2022 to 2023) |
| LACOE | 50.43% | 47.20% | 47.18% | -0.02% |
| LAUSD | 44.11% | 41.70% | 41.17% | -0.53% |
| MSA-1 | 45.06% | 36.04% | 33.01% | -3.03% |
| MSA-2 | 41.81% | 35.88% | 42.73% | 6.85% |
| MSA-3 | 35.67% | 33.18% | 32.66% | -0.52% |
| MSA-4 | 27.12% | 37.50% | 44.44% | 6.94% |
| MSA-5 | 46.96% | 45.34% | 45.04% | -0.30% |
| MSA-6 | 46.26% | 51.76% | 60.21% | 8.45% |
| MSA-7 | 44.54% | 37.85% | 36.50% | -1.35% |
| MSA-8 | 43.07% | 42.86% | 35.30% | -7.56% |
| LA Schools | | | 41.24% | |
| SDUSD | 56.85% | 53.13% | 53.76% | 0.63% |
| MSA-SD | 69.31% | 62.97% | 63.01% | 0.04% |
| - | | | | |
| SAUSD | 31.62% | 30.65% | 30.87% | 0.22% |
| MSA-SA | 34.23% | 36.66% | 43.68% | 7.02% |
| - | | | | |
| STATE | 51.10% | 47.06% | 46.66% | -0.40% |
| MPS | 45.03% | 42.54% | 43.17% | 0.63% |



2023 CAASPP Results - Math



| SBAC Historical Proficiency Rates - MATH (3-8,11) | | | | |
|---|---------------|---------------|---------------|-----------------------|
| | 2019 | 2022 | 2023 | Change (2022 to 2023) |
| LACOE | 39.11% | 32.86% | 34.75% | 1.89% |
| LAUSD | 33.47% | 28.49% | 30.50% | 2.01% |
| MSA-1 | 30.13% | 14.05% | 23.53% | 9.48% |
| MSA-2 | 27.87% | 21.76% | 25.65% | 3.89% |
| MSA-3 | 17.37% | 18.44% | 8.50% | -9.94% |
| MSA-4 | 8.47% | 25.00% | 11.11% | -13.89% |
| MSA-5 | 38.67% | 22.36% | 34.29% | 11.93% |
| MSA-6 | 38.36% | 32.56% | 35.87% | 3.31% |
| MSA-7 | 32.14% | 26.24% | 21.90% | -4.34% |
| MSA-8 | 23.86% | 23.31% | 17.37% | -5.94% |
| LA Schools | 22.28% | | | |
| SDUSD | 48.48% | 41.10% | 43.15% | 2.05% |
| MSA-SD | 60.62% | 49.88% | 54.66% | 4.78% |
| - | | | | |
| SAUSD | 25.10% | 18.52% | 19.83% | 1.31% |
| MSA-SA | 28.61% | 28.67% | 34.77% | 6.10% |
| - | | | | |
| STATE | 39.73% | 33.38% | 34.62% | 1.24% |
| MPS | 32.13% | 26.41% | 29.18% | 2.77% |



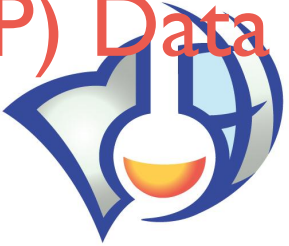
This information is presented as a supplement to the CEO metric progress monitoring.

CAASPP Results - Science



| CAST Historical Proficiency Rates - SCIENCE (5,8,HS) | | | | |
|--|--------|--------|--------|-----------------------|
| | 2019 | 2022 | 2023 | Change (2022 to 2023) |
| LACOE | 27.85% | 27.56% | 27.94% | 0.38% |
| LAUSD | 22.80% | 21.64% | 22.17% | 0.53% |
| MSA-1 | 30.61% | 21.13% | 5.60% | -15.53% |
| MSA-2 | 21.05% | 16.76% | 24.00% | 7.24% |
| MSA-3 | 10.05% | 14.90% | 8.08% | -6.82% |
| MSA-4 | 5.00% | 14.00% | 11.11% | -2.89% |
| MSA-5 | 11.54% | 14.41% | 13.72% | -0.69% |
| MSA-6 | 10.35% | 26.47% | 33.34% | 6.87% |
| MSA-7 | 34.62% | 24.53% | 29.55% | 5.02% |
| MSA-8 | 29.77% | 20.00% | 24.64% | 4.64% |
| - | | | | |
| SDUSD | 35.58% | 35.99% | 38.15% | 2.16% |
| MSA-SD | 55.74% | 53.38% | 52.51% | -0.87% |
| - | | | | |
| SAUSD | 15.34% | 14.99% | 16.06% | 1.07% |
| MSA-SA | 16.47% | 22.66% | 29.63% | 6.97% |
| - | | | | |
| STATE | 29.93% | 29.45% | 30.18% | 0.73% |
| MPS | 23.24% | 22.50% | 24.67% | 2.17% |

ELPAC English Language Proficiency (ELP) Data



| ELPAC Level 4 | 2018 | 2019 | 2021 | 2022 | 2023 | Change (2022 to 2023) |
|---------------|---------------|---------------|---------------|---------------|---------------|-----------------------|
| STATE | 30.56% | 16.40% | 13.98% | 15.57% | 16.50% | 0.93% |
| MPS | 25.10% | 18.90% | 11.25% | 17.04% | 20.60% | 3.56% |

| ELPAC OVERALL PERFORMANCE | | | | | | | | | |
|---------------------------|---|-----------------------------|---------------|-----------------------------------|---------------|---------------------------------|---------------|----------------------------------|---------------|
| | | Level 4 (Well Developed) | | Level 3 (Moderately Developed) | | Level 2 (Somewhat Developed) | | Level 1 (Minimally Developed) | |
| | Total # of Students Tested with Scores | # of Students | % of Students | # of Students | % of Students | # of Students | % of Students | # of Students | % of Students |
| LACOE | 231,293 | 40,572 | 17.54% | 76,942 | 33.27% | 65,538 | 28.34% | 48,241 | 20.86% |
| LAUSD | 88,656 | 14,420 | 16.27% | 26,731 | 30.15% | 24,413 | 27.54% | 23,092 | 26.05% |
| MSA-1 | 165 | 29 | 17.58% | 62 | 37.58% | 46 | 27.88% | 28 | 16.97% |
| MSA-2 | 83 | 19 | 22.89% | 29 | 34.94% | 18 | 21.69% | 17 | 20.48% |
| MSA-3 | 28 | 5 | 17.86% | 14 | 50.00% | 7 | 25.00% | 2 | 7.14% |
| MSA-4 | 24 | 5 | 20.83% | 8 | 33.33% | 4 | 16.67% | 7 | 29.17% |
| MSA-5 | 80 | 23 | 28.75% | 25 | 31.25% | 7 | 8.75% | 25 | 31.25% |
| MSA-6 | 14 | 3 | 21.43% | 7 | 50.00% | 4 | 28.57% | 0 | 0.00% |
| MSA-7 | 86 | 12 | 13.95% | 34 | 39.53% | 29 | 33.72% | 11 | 12.79% |
| MSA-8 | 62 | 8 | 12.90% | 15 | 24.19% | 22 | 35.48% | 17 | 27.42% |
| - | | | | | | | | | |
| SDUSD | 15,257 | 2,243 | 14.70% | 4,901 | 32.12% | 4,531 | 29.70% | 3,582 | 23.48% |
| MSA-SD | 26 | 9 | 34.62% | 14 | 53.85% | 1 | 3.85% | 2 | 7.69% |
| - | | | | | | | | | |
| SAUSD | 14,709 | 2,173 | 14.77% | 5,406 | 36.75% | 4,661 | 31.69% | 2,469 | 16.79% |
| MSA-SA | 160 | 37 | 23.13% | 69 | 43.13% | 45 | 28.13% | 9 | 5.63% |
| - | | | | | | | | | |
| STATE | | | | | | | | | |
| MPS | 728 | 150 | 20.60% | 277 | 38.05% | 183 | 25.14% | 118 | 16.21% |

NWEA MAP Data



Fall 2023- Fall 2024 Growth and CGI

| | Growth | | CGI | |
|--------------|--------------|--------------|-------------|--------------|
| | Math | Reading | Math | Reading |
| MPS | 51.0% | 49.5% | 0.00 | -0.45 |
| MSA1 | 53.3% | 51.2% | 0.47 | -0.44 |
| MSA2 | 51.2% | 50.8% | 0.04 | -0.09 |
| MSA3 | 47.9% | 53.5% | -0.32 | 0.11 |
| MSA4 | 59.7% | 51.7% | 1.42 | 0.23 |
| MSA5 | 42.5% | 36.9% | -1.43 | -2.59 |
| MSA6 | 65.3% | 51.0% | 0.79 | 0.00 |
| MSA7 | 38.7% | 42.3% | -0.62 | -1.45 |
| MSA8 | 31.0% | 30.4% | -2.39 | -3.22 |
| MSASD | 60.6% | 58.0% | 0.70 | 0.27 |
| MSASA | 62.4% | 58.0% | 1.22 | 1.31 |

CGI: Conditional Growth Index 0%=50th percentile, positive=growth

Academic Team Support to Schools 1/3



- **Math Programs**

- Implementation support for new math materials. Ongoing professional learning throughout the school year. While implementation of new materials can be difficult, teachers are responding positively and acknowledging how the new materials better support student learning.

- **ELA & EL Programs**

- Onboarded 8 new ELA teachers. StudySync curriculum training was provided to all new teachers, and ongoing professional development has been offered to all returning teachers. Katie Mann, Director of EL and ELA programs maintains and updates pacing guides, assessment timelines, and resources for 6th-12th grade ELA as well as myON Reading programs.
- All schools were provided with professional learning regarding our EL Programs during Summer In-Service. Initial ELPAC testing was completed for 77 new students within the first 30 days of the school year, and is ongoing as needed. MPS is currently providing EL services to 711 currently identified EL students.

Academic Team Support to Schools 2/3



- **Special Education**
 - SPED 101 Classes (MSA 1, 3, 5, 7, (New SPED Staff)
 - Addressing Litigious and Potentially Litigious Cases to seek resolution
 - CALPADS Support and Monitoring (Redesign of CALPADS System)

- **GATE**
 - Developing Implementation Plans for Schools
 - Creating a Parent Resource Handbook
 - Attended CA Association for the Gifted Conference

- **Mental Health/ Student and Family Support**
 - Final Edits of Parent Informational Podcasts (To release 6 podcasts during 23-24)
 - Grant Submitted for Family Treatment Centers (Projecting one Valley, one O.C.)
 - Ongoing CRISIS Intervention Training and Support (Site teams support all MPS)

- **CDE Monitoring and Compliance**
 - New Policy Implementation (Reintegration and ELPAC Domain Exemption)
 - MSA 1 Successfully Completed the First Cycle of Significant Disproportionality
 - Approval of Abbreviated CIM Plans (MSA 1 and 5)
 - Submission of Stepwell, SECMS, and CIM Documentation (MSA 2, SD, and 6)

Academic Team Support to Schools 3/3



- **Student Services**
 - Memorializing (Attendance and School Culture) Tier 1 Universal Foundational Practices, Tier 2 Targeted Interventions, and Tier 3 Intensive Support
 - Professional Development on Attendance and Chronic Absenteeism
 - MSA 1, MSA 2, and MSA SA are Full CIF Members
- **College and Career Readiness**
 - Implement the support system for College Counselors, improve their collaboration with students and families, and ensure the timely updating of essential information
 - Aiming for 100% acceptance into a Post Secondary Education program, MPS wide
 - Strengthening the Alumni Success Program to offer continuous support and resources to alumni for post-graduation success, and establishing a structured and organized alumni program
 - Providing PD opportunities and I-I check ins to all our college counselors
- **Expanded Learning**
 - All schools offer after-school programming that provides homework assistance, nutritious snack/supper, enrichment activities and physical education. All MPS schools provide expanded learning opportunities to students by offering enrichment activities during 30 non-instructional days for 9 hours a day through ELOP funding given by the state.
 - MPS-wide expanded learning programs are being implemented across all school sites. Programs include Academic Competitions, Science Olympiads, Journalism, College Mentorship, Advanced Math, and Robotics. Math Kahoot
- **SMAA** (School-wide Medical Administrative Activities)
 - Participation rates
 - 22-23 Q4 - 98%
 - 23-24 Q2- 100%

New to Magnolia Staff and Support Programs

| Instructional Positions replaced since July 1, 2023 | Assistant Principal/Dean | Athletic Director | Computer Science Teacher | Education Specialist | Elective Teacher | English Teacher | Hist/Social St. Teacher | Math Teacher | Multiple Subjects | Music Teacher | PACE Coordinator | PARAPROFSSIONAL | Physical Education Teacher | Restorative Justice Coordinator | Science Teacher | Social Worker | Spanish Teacher | SPED Aide & Paraprofessional | SPED Coordinator | Substitute | Teacher Aide | Grand Total | |
|---|--------------------------|-------------------|--------------------------|----------------------|------------------|-----------------|-------------------------|--------------|-------------------|---------------|------------------|-----------------|----------------------------|---------------------------------|-----------------|---------------|-----------------|------------------------------|------------------|------------|--------------|-------------|----|
| MSA-1 | | 1 | 1 | 1 | | 1 | | 2 | | | | | 1 | | 2 | | | | | | | | 9 |
| MSA-2 | | | | | | 1 | 1 | 1 | | | | | | | 1 | 1 | | | | 1 | 1 | | 7 |
| MSA-3 | | | | 3 | | | | 1 | | | 1 | | 1 | | 1 | | | | | | | | 7 |
| MSA-4 | | | | 1 | | 1 | 1 | 1 | | | | | 1 | | 1 | | 1 | 1 | | | | | 8 |
| MSA-5 | 1 | | | 1 | | 1 | | | | | | | 1 | | | | | | | | | | 4 |
| MSA-6 | | | | | | | | | | | | | | | 1 | | | | | | | | 1 |
| MSA-7 | | | | | | | | | 1 | | | | | | | | | 3 | | | 3 | | 7 |
| MSA-8 | 1 | | | 1 | | | 4 | 1 | | 1 | | 1 | 1 | 1 | 2 | | | | | 2 | | | 14 |
| MSA-SA | | | | | | | | 1 | 4 | | | | | | | | | 1 | | | 1 | | 7 |
| MSA-SD | | | | 1 | 1 | 1 | 1 | | | | | | | | | | | | | | | | 4 |
| Grand Total | 2 | 1 | 1 | 8 | 1 | 5 | 7 | 7 | 5 | 1 | 1 | 1 | 4 | 1 | 8 | 1 | 1 | 4 | 1 | 3 | 5 | 68 | |

Support Programs:

- Held New Teacher Training Days
 - August 4 , September 1st, November 3rd, January 12th (scheduled)
 - Training focuses on:
 - #MagnoliaWay: History, mission, vision & core values
 - Building a Caring Community of Learners
 - Elements of High Quality Instruction
 - Strategies, tools, practices
- Instructional Rounds, check in meetings, additional class observations, focused mini PDs, virtual support, PLCs

Instructional Rounds Updates



Instructional Rounds are day-Long visits to schools conducted by the Academic Team **three times a year**. A schedule is created for each visit that includes a morning leadership meeting, observation of classes, time for document review, and a debrief that highlights glows and grow trends for the school and next steps.

Updated Purpose & Scope for 2023/2024

- **September:** Baseline observations used to gather data around instructional practices for the year. Observations are aligned to instructional themes and focus elements identified by school site teams.
- **November/December:** Check-in #1 to observe, provide feedback around instructional practices goals, and support schools with initial preparation for authorizer visits.
- **February/March:** Check-in #2 to observe, provide feedback around instructional practices goals, and support schools with preparation for authorizer visits. Final feedback loop to consider when planning for next school year.

Highlights

- All 10 schools have been visited for round 1 and baseline data has been collected
- All school leaders have taken part in instructional rounds
- New templates and resources have been developed to support schools
- Process is more collaborative, with school leaders taking the lead in debriefing classroom visits

MPS PARTNERSHIP

- 6 Principals
- 5 Home office staff



23-24 California ILPD at a Glance

Summer Intensive

Establish Environment for
Rigorous Learning

Intersession 1

Center Content for
Rigorous Learning

Intersession 2 & 3

Adjust Approaches for
Rigorous Learning

Core Content

Introduce & Practice Skills

Practice Labs

Apply in Context

Implementation Sessions

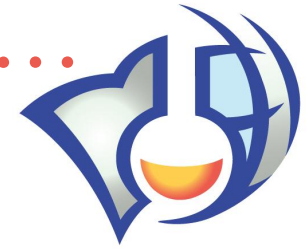
Systems & Tools (Optional)

K-12 Attendance Data Update

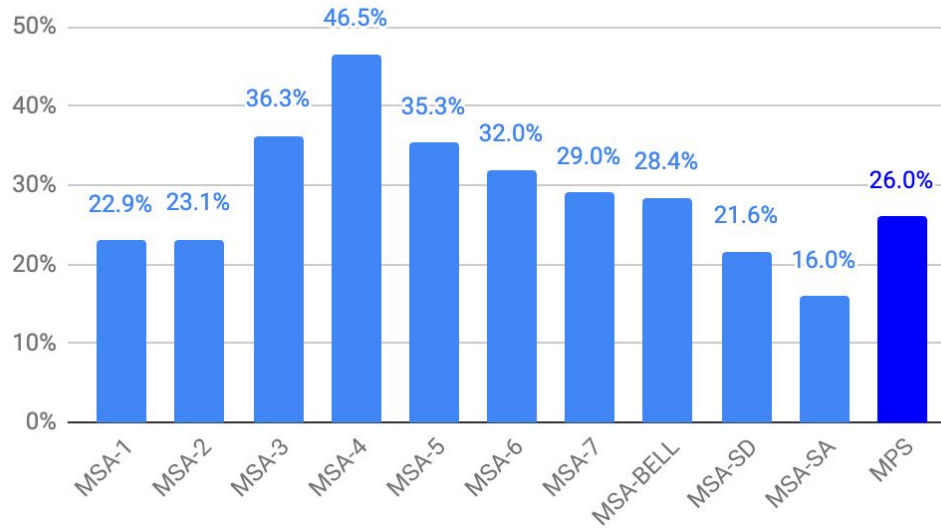


| | 2018-19 | 2019-20 | 2020-21 Online Ed | 2021-22 | 2022-23 | 2023-24 as of Oct 31 |
|---|---------------|---------------|----------------------|---------------|---------------|----------------------------------|
| Average Daily Attendance (ADA) Rate (P-2 ADA) | 95.50% | 96.08% | 97.80% | 90.36% | 92.50% | 94.21% (SIS ADA) |
| Chronic Absenteeism Rate | 9.5% | N/A | 6.4% | 30.0% | 26.0% | in progress 21% |
| SART Meetings | * | * | * | * | 62 | in progress 8 |
| Involuntary Removal due to SART Violation | * | * | * | * | 22 | in progress 1 |

K-12 Attendance Data Update cont...



2022-23 Chronic Absenteeism Rate (K-12)



| | | Chronic Absenteeism Rates | | | CDE DASHBOARD DATA | |
|--------------|---------|---------------------------|---------|---------|--------------------|--|
| | 2018-19 | 2019-20 | 2020-21 | 2021-22 | 2022-23 | |
| MPS | 9.5% | N/A | 6.4% | 30.0% | 26.0% | |
| LACOE | 13.8% | N/A | 13.3% | 31.2% | 26.8% | |
| LAUSD | 18.4% | N/A | 15.6% | 36.9% | 30.8% | |
| SAUSD | 7.8% | N/A | 8.9% | 31.5% | 22.6% | |
| SDUSD | 12.4% | N/A | 14.3% | 32.7% | 25.8% | |
| STATE | 12.1% | N/A | 14.3% | 26.8% | 24.9% | |

Chronic Absenteeism & School Culture Comparison



| | Chronic Absenteeism | | Suspension | |
|--------------|---------------------|---------|------------|---------|
| | 2021-22 | 2022-23 | 2021-22 | 2022-23 |
| MPS | 26.8% | 26.0% | 1.7% | N/A |
| LACOE | 31.2% | 26.8% | 1.7% | N/A |
| LAUSD | 36.9% | 30.8% | 0.5% | N/A |
| SAUSD | 31.5% | 22.6% | 3.6% | N/A |
| SDUSD | 32.7% | 25.8% | 2.5% | N/A |
| STATE | 30.0% | 24.9% | 3.2% | N/A |

CDE DASHBOARD DATA
22-23 Not available

School Culture



| | 2018-19 | 2019-20 | 2020-21 | 2021-22 | 2022-23 | 2023-24 |
|----------------------------------|-----------|-----------|----------|-----------|------------|-----------|
| Suspension Data Out-of-School | 73 | 29 | 0 | 66 | 114 | 21 |
| Suspension Data In-School | 8 | 3 | 0 | 6 | 11 | 0 |
| Other Means of Correction | * | * | * | * | 132 | 16 |
| Expulsion Data | 3 | 1 | 0 | 2 | 1 | 0 |

MPS Internal Data

2023 PBIS Recognition



SILVER SCHOOLS

GOLD SCHOOLS

PLATINUM SCHOOL



2023-24 CIF



| | Athletic Director | Fall Sports | Winter Sports | Spring Sports | 1 request that would make the program great |
|---|-------------------|---|--|--|---|
| Magnolia Science Academy | Sammy Skinner | Girls Volleyball Future Plan: B&G Cross Country 24-25 | Girls Soccer Boys Soccer Girls Basketball Boys Basketball E-Sports | Boys Volleyball Future Plan: Beach Volleyball & Baseball 24-25 | Elevate Quality Coaching |
| Magnolia Science Academy 2 | Joseph Compagno | Boys Cross Country Girls Cross Country | Boys Soccer Girls Soccer | Boys Volleyball Girls Beach Volleyball Boys Track & Field Girls Track & Field | Facilities (Soccer Field) |
| Magnolia Science Academy 3 | Quincey Jackson | Boys Cross Country Girls Cross Country Girls Volleyball | Boys Basketball Boys Soccer Competitive Cheer | Boys Volleyball | Transportation and Facilities (Training, Fields and Gyms) |
| Magnolia Science Academy 4 | Richard Pham | Girls Volleyball | Boys Basketball Boys Soccer | Future Plan: Boys Volleyball 24-25 | Facilities |
| Magnolia Science Academy 5 | David Carrasco | Girls Volleyball Boys Cross Country Girls Cross Country | Boys Basketball Girls Basketball Boys Soccer (co-ed) | Boys Volleyball Girls (beach volleyball) (baseball 24-25) | Facilities (training & fields) |
| Magnolia Science Academy Santa Ana | Spencer Solomon | Boys Cross Country Girls Volleyball | Girls Basketball Boys Basketball Boys Soccer eSport | Boys Volleyball Girls Track & Field Boys Track & Field eSport | Transportation |



Questions or Comments ?